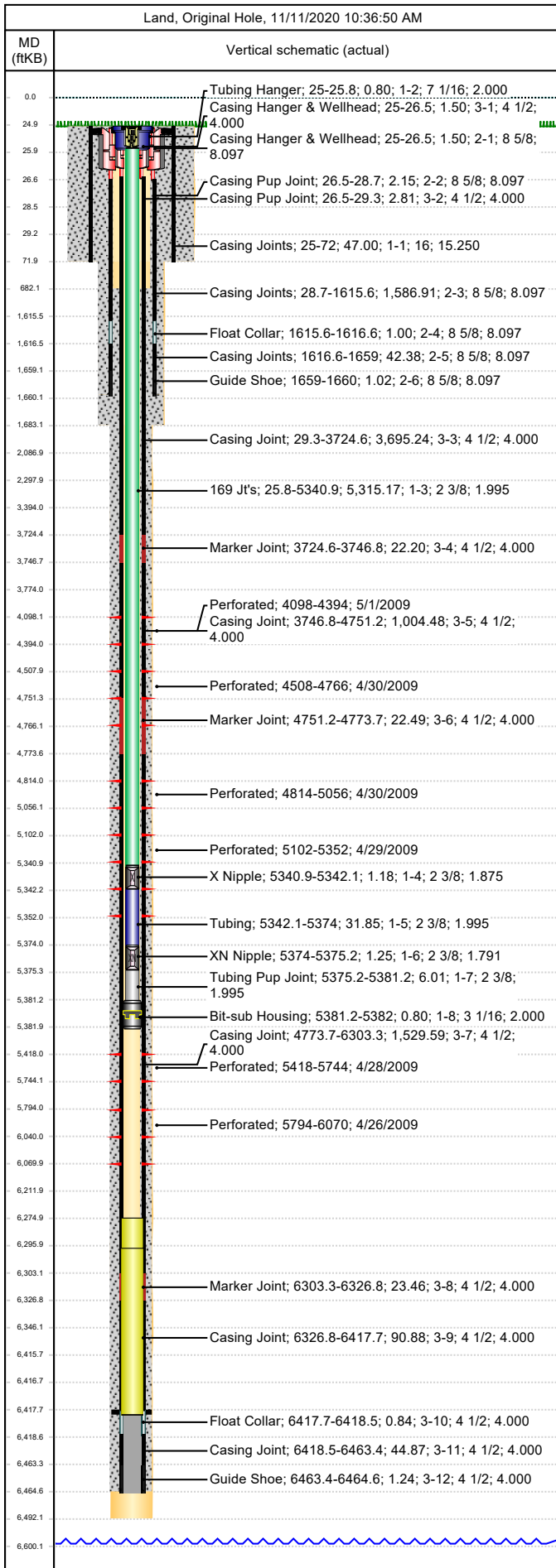




# Wellbore Schematic

Well Name SKR-598-26-AV-01	Lease Chevron USA	Field Name Skinner Ridge	Business Unit Mid-Continent
-------------------------------	----------------------	-----------------------------	--------------------------------



Job Details							
Job Category				Start Date		Rig/Unit End Date	
Casing Strings							
Csg Des	OD (in)	Wt/Len (lb/ft)	Grade	Top Thread	Set Depth (MD) (ftKB)		
Conductor	16	65.00	H-40		72		
Surface	8 5/8	24.00	K-55		1660		
Production Casing	4 1/2	11.60	N-80	LTC	6464.6		
Tubing Strings							
Tubing - Production set at 5,382.0ftKB on 6/5/2009 10:00							
Tubing Description				Run Date	String Length (ft)	Set Depth (MD) (ftKB)	
Tubing - Production				6/5/2009	5,382.06	5,382.0	
Item Des		Jts	OD (in)	Wt (lb/ft)	Grade	Len (ft)	Btm (ftKB)
KBGL						25.00	25.0
Tubing Hanger			7 1/16		4140	0.80	25.8
169 Jt's		169	2 3/8	4.70	L-80	5,315.17	5,340.9
X Nipple			2 3/8			1.18	5,342.1
Tubing		1	2 3/8	4.70	L-80	31.85	5,374.0
XN Nipple			2 3/8			1.25	5,375.2
Tubing Pup Joint			2 3/8	4.70	L-80	6.01	5,381.2
Bit-sub Housing			3 1/16			0.80	5,382.0
Tubing Landed @							5,382.0
Perforations							
Date	Top (ftKB)	Btm (ftKB)	Shot Dens (shots/ft)	Entered Shot Total	Linked Zone		
5/1/2009	4,098.0	4,394.0	3.0	30	Mesa Verde - WMFK - Williams Fork, Original Hole		
4/30/2009	4,508.0	4,766.0	3.0	30	Mesa Verde - WMFK - Williams Fork, Original Hole		
4/30/2009	4,814.0	5,056.0	3.0	30	Mesa Verde - WMFK - Williams Fork, Original Hole		
4/29/2009	5,102.0	5,352.0	3.0	27	Mesa Verde - WMFK - Williams Fork, Original Hole		
4/28/2009	5,418.0	5,744.0	3.0	24	Mesa Verde - WMFK - Williams Fork, Original Hole		
4/26/2009	5,794.0	6,070.0	3.0	30	Mesa Verde - WMFK - Williams Fork, Original Hole		
Other Strings							
Run Date	Pull Date	Set Depth (ftKB)	Com				
Other In Hole							
Des	Top (ftKB)	Btm (ftKB)	Run Date	Pull Date	Com		
Bear Claw Frac Plug	4,049.0	4,051.0	5/22/2009	6/3/2009	Solid composite plug.		
Bear Claw Frac Plug	4,450.0	4,452.0	5/1/2009	6/3/2009	Bio Ball composite, flow thru, frac, bridge plug		
Bear Claw Frac Plug	4,789.0	4,791.0	4/30/2009	6/3/2009	Bio Ball composite, flow thru, frac, bridge plug		
Bear Claw Frac Plug	5,078.0	5,080.0	4/30/2009	6/3/2009	Bio Ball composite, flow thru, frac, bridge plug		
Tubing Plunger	5,338.8	5,339.8	2/22/2010	2/22/2013			
Bumper Spring	5,339.8	5,340.8	2/22/2010	3/8/2013			
Bear Claw Frac Plug	5,384.0	5,386.0	4/29/2009	6/3/2009	Bio Ball composite, flow thru, frac, bridge plug		
Bear Claw Frac Plug	5,759.0	5,761.0	4/28/2009	6/3/2009	Bio Ball composite, flow thru, frac, bridge plug		
Fill, 3/8/2013	6,275.0	6,296.0	3/8/2013				
Fill, 2/22/2010	6,296.0	6,417.8	2/22/2010		Tag w/ slick-line,		
Pumped off	6,415.8	6,416.6	6/4/2009				
Mill	6,416.6	6,417.8	6/4/2009				
PBTD	6,417.8	6,464.6	2/6/2008				