

Cement Post Job Report

Client: PDC Energy

Well Name: Bost Farm 39N-8B-L

API #: 05-123-51447-00

Job Date: April 26, 2022

Job Type: New Well - 5.5" Production String

Cement Company & Contact: EXERO Well Integrity -
Cheve Meyer 720-239-3819



ROCK SOLID
WELL INTEGRITY
SOLUTIONS

Treatment Report

Client PDC		Well Name & No. Bost Farm 39N-8B-L		Rig Name & No. Patterson 272		Date 4/26/2022	
Job Type Production		Wellhead Connection 5 1/2" HP Cement Head		Casing/Tubing Thread Type Buttress		BHST Deg 275	BHCT Deg 200
Well MD (ft) 17923	Well TVD (ft) 7194	Deg Dev. 90	No. of Stages 1	Tapered String No	Max. PSI. 7000	Max. Ann. PSI. 2500	
Packer/Retainer/DV Tool Depth		Top of Perfs NA		Bottom of Perfs NA		Number of Holes NA	

Pipe/String Details

String	Type of Casing, Tub, DP	OD"	Wt-lb/Ft	ID"	OH Size"	% Excess Lead	% Excess Tail	Depth (ft)
Surface	Casing	9.625	36					1700
Production	Casing	5.5	20	4.778	8.5	0	0	17911

Pre-Job Mud and Well Conditions

Mud Type	OBM	Pipe Rotation		Circulation Data			
Mud wt. ppg	10.4	Rotate Y,N	No	Time Circulated (hrs)			
Flow Temp	103	Rate		Circulation Rate (bpm)			
Vis. Sec/qt	45	Torque Val.		Full Circulation (Y,N, Partial)			
PV (cP)	18	Rotate Time		Gas Present (Y,N)		Units	
Yield Pt	8	Pipe Reciprocation		Centralizers/Plugs			
10 sec gel	4	Recip Y,N	No	Quantity & Type			
10 min gel	6	Stroke (ft)		Top Plug/Type		PDC Provided	
30 min gel	8	Recip time		Bottom Plug/Type/Burst psi		PDC Provided	

Prejob Calculated Materials, Volumes, & Rates

Preflush & Spacers		Stage 1 Lead: Class G		Stage 1 Tail: Class G		Stage 2 Lead: NA		Stage 2 Tail: NA		Displacement	
Spacer 1	Spacer	Density	12.9	Density	13.7	Density		Density		Fluid Type	Water
Density	12	Sacks	1276	Sacks	1548	Sacks		Sacks		Density	8.33
Volume	140	Vol/bbls	256.8	Vol/bbls	377.7	Vol/bbls	0.0	Vol/bbls	0.0	Volume (bbls)	396.5
Rate	10	Rate	11	Rate	11	Rate		Rate		Rate (bpm)	
Spacer 2		Yield	1.13	Yield	1.37	Yield		Yield		Clay Stabilizer?	No
Density		Gal/Sk	3.9	Gal/Sk	6.63	Gal/Sk		Gal/Sk		Biocide/Inhibitor?	Yes
Volume		% Excess	0	% Excess	0	% Excess		% Excess		Slow Rate @ bbl	376
Rate		Lead Top	2377	Tail Top	8651	Lead Top		Tail Top		Bump (psi)	
H2O Req.	140	H2O Req.	118	H2O Req.	244	H2O Req.	0	H2O Req.	0	H2O Req.	396.5

Post Job Details, Final Volumes & Pressures

Job Water Requirements (job+ washup+20% safety factor)				1079		bbls	
Actual Displacement (bbls)	396			Spacer to Surface		No	
Bump Plug?	Yes			Spacer Volume To Pit (bbls)			
Final Bump Pressure	3250			Cement To Surface (Y,N)		No	
Full Returns Thru Job	Yes			Cement Volume To Surface			
Vol/Time When Circ. Loss				Surface Top Out?			
Vol/Time when Loss Stops				Top Out Volume (bbls)			

Additional Post Job Notes

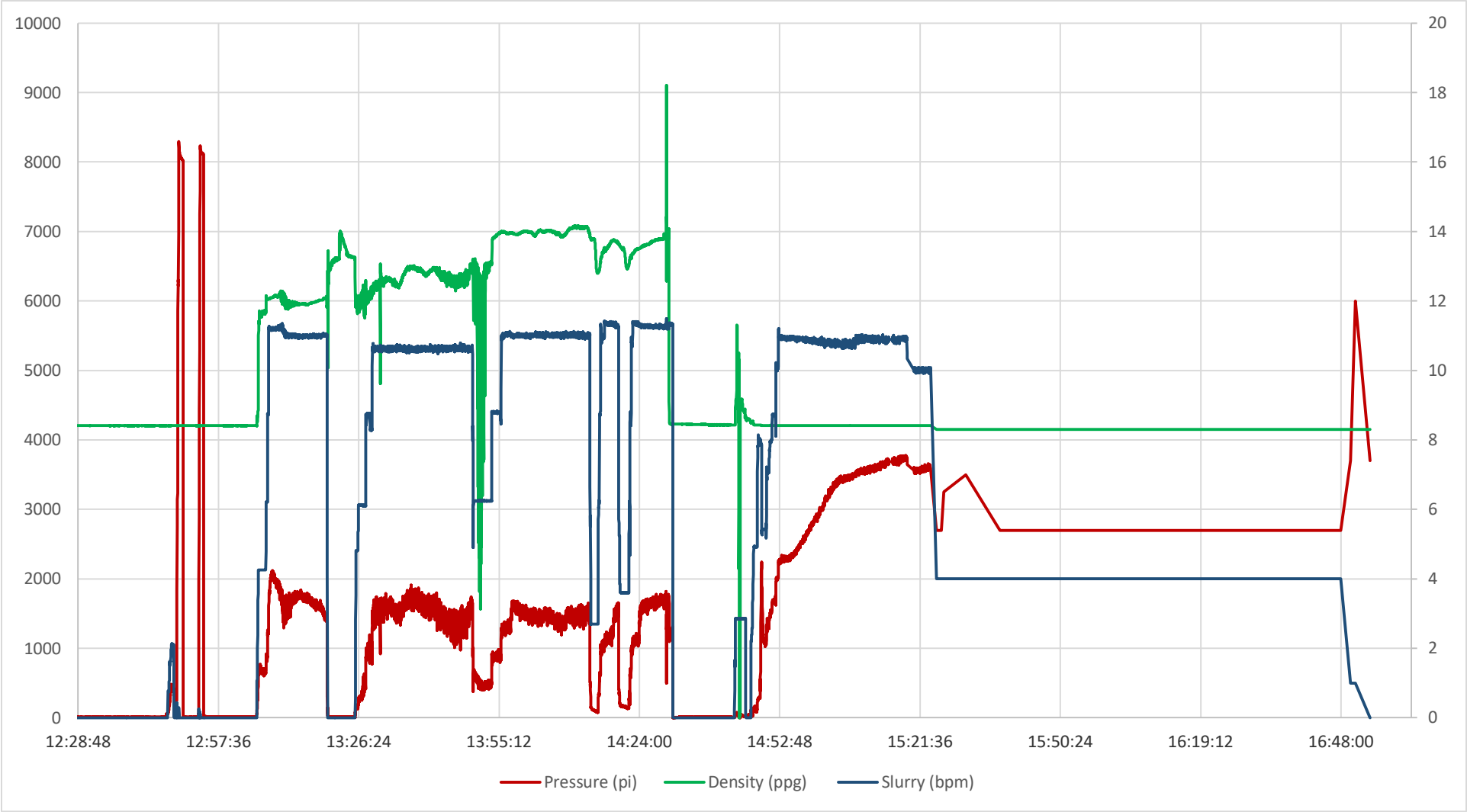


ROCK SOLID
WELL INTEGRITY
SOLUTIONS

Job Treatment Log

Client	Well Name & Number		Rig Name		Date	Ambient Conditions (Temperature / Humidity / Air Pressure)	
PDC	Bost Farm 39N-88-L		Patterson 272		4/26/2022	69 Deg F / 20% / 25.000 in	
Date (MM/DD/YY)	Time (HH:MM)	Density (ppg)	Rate (bpm)	Volume (bbl)	Cumulative Volume (bbl)	Pressure	Treatment Details
4/26/2022	8:00						CALL OUT FOR REQUESTED ON LOCATION TIME OF 08:00 ARRIVED ON LOCATIO AT 08:00. Met with customer to get well information and discuss the job.
	9:00						SPOT EQUIPMENT
	9:15						RIG UP
	10:15						WAIT ON RIG TO FINISH CIRCULATING
	12:15						SAFETY MEETING
	12:40						RIG UP FLOOR
	12:46	8.30	2.00	3.0		500.0	FILL LINES
	12:48	8.30			3.0	8200.0	PRESSURE TEST LINES TO 8000 PSI.
	12:49				3.0		Fix Leak on back of pump
	12:53				3.0	8200.0	PRESSURE TEST LINES TO 8000 PSI.
	12:55	8.30			3.0		DROP FIRST BOTTOM PLUG.
	13:05	12.00	10.00	120.0	3.0	2000.0	PUMP SPACER WITH SURFACTANT AND FIBER.
	13:20	8.30			123.0		Shut Down Drop 2nd Bottom Plug
					123.0		
	13:25	12.90	11.00	256.0	123.0	1500.0	1276 Sacks Lead @ 12.9 PPG Yield 1.13 WR- 3.87 Gal/ SK
	13:52	13.70	11.00	377.7	379.0	1250.0	MIX AND PUMP 1548 SKS TAIL @ 13.7# , 1.37 CUFT/SK AND 6.63 GALS/SK
	14:29	8.30	9.00	8.0	756.7	1200.0	PUMP 8 BBLS OF SUGAR WATER
	14:30	8.30			764.7	0.0	SHUT DOWN
	14:41	8.30			764.7		WASH PUMPS AND LINES
	14:31	8.30			764.7		DROP TOP PLUG/ Fix Leak On stand Pipe
	14:46	8.30	6.00	20.0	764.7	300.0	START FRESH WATER DISPLACEMENT
	14:50	8.30	8.00	10.0	784.7	1550.0	WATER DISPLACEMENT
	14:52	8.30	11.00	20.0	794.7	2300.0	WATER DISPLACEMENT
	14:53	8.30	11.00	50.0	814.7	2340.0	WATER DISPLACEMENT
	14:59	8.30	11.00	50.0	864.7	2700.0	WATER DISPLACEMENT
	15:04	8.30	11.00	50.0	914.7	3600.0	WATER DISPLACEMENT
	15:08	8.30	11.00	50.0	964.7	3700.0	WATER DISPLACEMENT
	15:13	8.30	10.00	50.0	1014.7	3550.0	WATER DISPLACEMENT
	15:18	8.30	10.00	50.0	1064.7	3600.0	WATER DISPLACEMENT
	15:23	8.30	7.80	20.0	1114.7	3500.0	WATER DISPLACEMENT
	15:25	8.30	4.00	20.0	1134.7	2700.0	WATER DISPLACEMENT
	15:26	8.30	4.00		1134.7	2700.0	LAND PLUG , BUMP PLUG TO 3250 PSI.
	15:31	8.30			1134.7	3500.0	CHECK FLOATS , floats held 5.5 bbl. back.
	15:38	8.30			1134.7	2700.0	SET PACKER PER TOOL HAND.
	16:50	8.30	1.00	2.0	1134.7	3700.0	SHIFT SLEEVE AND PUMP WET SHOE. SLEEVE opened @ 6000 PSI.
	16:54	8.30			1136.7	3700.0	checked floats 4 bbls back
	17:00				1136.7		released commenced rig down
	18:00				1136.7		depart from location
							No spacer back to surface

Bost Farm 39N-8B-L Pump Chart – Pressure / Rate / Density





Centralizer Depths

Well Name: Bost Farm 39N-8B-L

Production, Set Depth: 17,911.0ftKB

API 05123514470000		Surface Legal Location SWNW 7 5N 66W		Field Name Wattenberg		State CO		Well Configuration Type Horizontal	
Ground Elevation (ft) 4,874.00		Original KB Elevation (ft) 4,902.00		KB-Ground Distance (ft) 28.00		Spud Date 4/22/2022 23:30		Rig Release Date 4/26/2022 18:00	
						On Production Date		Abandon Date	

Casing Run Tally

Run #	Ref #	Item Des	OD (in)	Wt (lb/ft)	Grade	Run?	Len (ft)	Centralized?	Ext Jw/ry	Connections	Top (ftKB)	Cum Len (ft)
7	1	Casing Joints	5 1/2	20.00	P-110	Yes	44.10	Yes			17,832.0	78.97
9	3	Casing Joints	5 1/2	20.00	P-110	Yes	43.74	Yes			17,744.6	166.36
11	5	Casing Joints	5 1/2	20.00	P-110	Yes	43.70	Yes			17,657.6	253.41
13	7	Casing Joints	5 1/2	20.00	P-110	Yes	42.65	Yes			17,571.2	339.76
15	9	Casing Joints	5 1/2	20.00	P-110	Yes	43.61	Yes			17,483.6	427.39
17		Marker Joint A	5 1/2	20.00	P-110	Yes	10.27	Yes			17,429.4	481.61
19	12	Casing Joints	5 1/2	20.00	P-110	Yes	43.12	Yes			17,342.7	568.29
21	14	Casing Joints	5 1/2	20.00	P-110	Yes	40.95	Yes			17,260.5	650.54
23	16	Casing Joints	5 1/2	20.00	P-110	Yes	42.68	Yes			17,174.8	736.22
25	18	Casing Joints	5 1/2	20.00	P-110	Yes	42.48	Yes			17,089.8	821.16
27	20	Casing Joints	5 1/2	20.00	P-110	Yes	43.40	Yes			17,003.7	907.34
29	22	Casing Joints	5 1/2	20.00	P-110	Yes	43.28	Yes			16,917.0	993.97
31	24	Casing Joints	5 1/2	20.00	P-110	Yes	43.28	Yes			16,830.4	1,080.63
33	26	Casing Joints	5 1/2	20.00	P-110	Yes	42.90	Yes			16,744.7	1,166.34
35	28	Casing Joints	5 1/2	20.00	P-110	Yes	43.35	Yes			16,658.0	1,252.97
37	30	Casing Joints	5 1/2	20.00	P-110	Yes	43.35	Yes			16,571.1	1,339.87
39	32	Casing Joints	5 1/2	20.00	P-110	Yes	43.35	Yes			16,484.4	1,426.62
41	34	Casing Joints	5 1/2	20.00	P-110	Yes	42.90	Yes			16,398.6	1,512.37
43	36	Casing Joints	5 1/2	20.00	P-110	Yes	43.05	Yes			16,312.4	1,598.58
45	38	Casing Joints	5 1/2	20.00	P-110	Yes	43.10	Yes			16,225.6	1,685.38
47	40	Casing Joints	5 1/2	20.00	P-110	Yes	43.02	Yes			16,139.2	1,771.80
49	42	Casing Joints	5 1/2	20.00	P-110	Yes	43.36	Yes			16,052.8	1,858.21
51	44	Casing Joints	5 1/2	20.00	P-110	Yes	43.37	Yes			15,966.1	1,944.93
53	46	Casing Joints	5 1/2	20.00	P-110	Yes	43.38	Yes			15,879.3	2,031.69
55	48	Casing Joints	5 1/2	20.00	P-110	Yes	42.36	Yes			15,793.4	2,117.58
57	50	Casing Joints	5 1/2	20.00	P-110	Yes	42.78	Yes			15,706.6	2,204.39
59	52	Casing Joints	5 1/2	20.00	P-110	Yes	44.00	Yes			15,618.6	2,292.44
61	54	Casing Joints	5 1/2	20.00	P-110	Yes	43.38	Yes			15,531.9	2,379.07
63	56	Casing Joints	5 1/2	20.00	P-110	Yes	44.05	Yes			15,444.6	2,466.39
65	58	Casing Joints	5 1/2	20.00	P-110	Yes	42.90	Yes			15,358.6	2,552.37
67	60	Casing Joints	5 1/2	20.00	P-110	Yes	43.02	Yes			15,272.2	2,638.79



Centralizer Depths

Well Name: Bost Farm 39N-8B-L

Production, Set Depth: 17,911.0ftKB

API 05123514470000		Surface Legal Location SWNW 7 5N 66W		Field Name Wattenberg		State CO		Well Configuration Type Horizontal					
Ground Elevation (ft) 4,874.00		Original KB Elevation (ft) 4,902.00		KB-Ground Distance (ft) 28.00		Spud Date 4/22/2022 23:30		Rig Release Date 4/26/2022 18:00		On Production Date		Abandon Date	

Casing Run Tally

Run #	Ref #	Item Des	OD (in)	Wt (lb/ft)	Grade	Run?	Len (ft)	Centralized?	Ext Jw/ry	Connections	Top (ftKB)	Cum Len (ft)
69	62	Casing Joints	5 1/2	20.00	P-110	Yes	43.35	Yes			15,188.4	2,722.65
71	64	Casing Joints	5 1/2	20.00	P-110	Yes	43.15	Yes			15,101.8	2,809.20
73	66	Casing Joints	5 1/2	20.00	P-110	Yes	44.02	Yes			15,014.7	2,896.32
75	68	Casing Joints	5 1/2	20.00	P-110	Yes	44.02	Yes			14,926.8	2,984.19
77	70	Casing Joints	5 1/2	20.00	P-110	Yes	43.75	Yes			14,839.7	3,071.26
79	72	Casing Joints	5 1/2	20.00	P-110	Yes	43.30	Yes			14,753.1	3,157.91
81	74	Casing Joints	5 1/2	20.00	P-110	Yes	44.03	Yes			14,666.0	3,244.99
83	76	Casing Joints	5 1/2	20.00	P-110	Yes	43.15	Yes			14,579.9	3,331.08
85	78	Casing Joints	5 1/2	20.00	P-110	Yes	43.33	Yes			14,493.3	3,417.75
87	80	Casing Joints	5 1/2	20.00	P-110	Yes	44.00	Yes			14,405.3	3,505.75
89	82	Casing Joints	5 1/2	20.00	P-110	Yes	43.38	Yes			14,318.5	3,592.48
91	84	Casing Joints	5 1/2	20.00	P-110	Yes	43.19	Yes			14,232.0	3,679.03
93	86	Casing Joints	5 1/2	20.00	P-110	Yes	43.35	Yes			14,145.2	3,765.79
95	88	Casing Joints	5 1/2	20.00	P-110	Yes	43.53	Yes			14,058.3	3,852.66
97	90	Casing Joints	5 1/2	20.00	P-110	Yes	43.10	Yes			13,971.9	3,939.11
99	92	Casing Joints	5 1/2	20.00	P-110	Yes	42.97	Yes			13,886.2	4,024.83
101	94	Casing Joints	5 1/2	20.00	P-110	Yes	43.40	Yes			13,799.4	4,111.58
103	96	Casing Joints	5 1/2	20.00	P-110	Yes	43.38	Yes			13,712.7	4,198.26
105	98	Casing Joints	5 1/2	20.00	P-110	Yes	42.65	Yes			13,627.7	4,283.31
107	100	Casing Joints	5 1/2	20.00	P-110	Yes	43.35	Yes			13,541.0	4,369.96
109	102	Casing Joints	5 1/2	20.00	P-110	Yes	43.40	Yes			13,454.5	4,456.46
111	104	Casing Joints	5 1/2	20.00	P-110	Yes	42.78	Yes			13,369.5	4,541.49
113	106	Casing Joints	5 1/2	20.00	P-110	Yes	43.25	Yes			13,282.9	4,628.09
115	108	Casing Joints	5 1/2	20.00	P-110	Yes	43.03	Yes			13,196.9	4,714.14
117	110	Casing Joints	5 1/2	20.00	P-110	Yes	41.76	Yes			13,111.4	4,799.62
119	112	Casing Joints	5 1/2	20.00	P-110	Yes	43.22	Yes			13,025.3	4,885.68
121		Marker Joint B	5 1/2	20.00	P-110	Yes	9.95	Yes			12,972.3	4,938.67
123	115	Casing Joints	5 1/2	20.00	P-110	Yes	43.40	Yes			12,885.8	5,025.25
125	117	Casing Joints	5 1/2	20.00	P-110	Yes	41.28	Yes			12,801.1	5,109.93
127	119	Casing Joints	5 1/2	20.00	P-110	Yes	43.34	Yes			12,714.4	5,196.61
129	121	Casing Joints	5 1/2	20.00	P-110	Yes	43.35	Yes			12,628.0	5,283.02



Centralizer Depths

Well Name: Bost Farm 39N-8B-L

Production, Set Depth: 17,911.0ftKB

API 05123514470000		Surface Legal Location SWNW 7 5N 66W		Field Name Wattenberg		State CO		Well Configuration Type Horizontal	
Ground Elevation (ft) 4,874.00		Original KB Elevation (ft) 4,902.00		KB-Ground Distance (ft) 28.00		Spud Date 4/22/2022 23:30		Rig Release Date 4/26/2022 18:00	
						On Production Date		Abandon Date	

Casing Run Tally

Run #	Ref #	Item Des	OD (in)	Wt (lb/ft)	Grade	Run?	Len (ft)	Centralized?	Ext Jw/ry	Connections	Top (ftKB)	Cum Len (ft)
131	123	Casing Joints	5 1/2	20.00	P-110	Yes	43.02	Yes			12,541.7	5,369.26
133	125	Casing Joints	5 1/2	20.00	P-110	Yes	43.20	Yes			12,455.2	5,455.81
135	127	Casing Joints	5 1/2	20.00	P-110	Yes	43.52	Yes			12,370.5	5,540.51
137	129	Casing Joints	5 1/2	20.00	P-110	Yes	43.74	Yes			12,283.5	5,627.50
139	131	Casing Joints	5 1/2	20.00	P-110	Yes	41.95	Yes			12,198.0	5,712.99
141	133	Casing Joints	5 1/2	20.00	P-110	Yes	43.91	Yes			12,110.4	5,800.62
143	135	Casing Joints	5 1/2	20.00	P-110	Yes	41.65	Yes			12,025.4	5,885.64
145	137	Casing Joints	5 1/2	20.00	P-110	Yes	43.12	Yes			11,938.8	5,972.16
147	139	Casing Joints	5 1/2	20.00	P-110	Yes	43.24	Yes			11,852.6	6,058.45
149	141	Casing Joints	5 1/2	20.00	P-110	Yes	43.02	Yes			11,766.2	6,144.83
151	143	Casing Joints	5 1/2	20.00	P-110	Yes	42.71	Yes			11,679.7	6,231.26
153	145	Casing Joints	5 1/2	20.00	P-110	Yes	42.14	Yes			11,593.9	6,317.09
155	147	Casing Joints	5 1/2	20.00	P-110	Yes	43.05	Yes			11,507.9	6,403.14
157	149	Casing Joints	5 1/2	20.00	P-110	Yes	42.98	Yes			11,421.9	6,489.13
159	151	Casing Joints	5 1/2	20.00	P-110	Yes	43.80	Yes			11,334.4	6,576.64
161	153	Casing Joints	5 1/2	20.00	P-110	Yes	42.88	Yes			11,247.4	6,663.57
163	155	Casing Joints	5 1/2	20.00	P-110	Yes	43.34	Yes			11,162.2	6,748.79
165	157	Casing Joints	5 1/2	20.00	P-110	Yes	42.80	Yes			11,076.6	6,834.37
167	159	Casing Joints	5 1/2	20.00	P-110	Yes	43.39	Yes			10,991.1	6,919.86
169	161	Casing Joints	5 1/2	20.00	P-110	Yes	43.05	Yes			10,904.4	7,006.57
171	163	Casing Joints	5 1/2	20.00	P-110	Yes	42.72	Yes			10,819.1	7,091.89
173	165	Casing Joints	5 1/2	20.00	P-110	Yes	43.00	Yes			10,738.4	7,172.63
175	167	Casing Joints	5 1/2	20.00	P-110	Yes	43.30	Yes			10,651.7	7,259.28
177	169	Casing Joints	5 1/2	20.00	P-110	Yes	43.34	Yes			10,565.4	7,345.60
179	171	Casing Joints	5 1/2	20.00	P-110	Yes	43.35	Yes			10,478.7	7,432.28
181	173	Casing Joints	5 1/2	20.00	P-110	Yes	41.91	Yes			10,396.9	7,514.15
183	175	Casing Joints	5 1/2	20.00	P-110	Yes	42.48	Yes			10,314.1	7,596.87
185	177	Casing Joints	5 1/2	20.00	P-110	Yes	41.93	Yes			10,231.9	7,679.12
187	179	Casing Joints	5 1/2	20.00	P-110	Yes	41.02	Yes			10,149.7	7,761.32
189	181	Casing Joints	5 1/2	20.00	P-110	Yes	40.38	Yes			10,066.1	7,844.88
191	183	Casing Joints	5 1/2	20.00	P-110	Yes	42.02	Yes			9,984.3	7,926.72



Centralizer Depths

Well Name: Bost Farm 39N-8B-L

Production, Set Depth: 17,911.0ftKB

API 05123514470000		Surface Legal Location SWNW 7 5N 66W		Field Name Wattenberg		State CO		Well Configuration Type Horizontal	
Ground Elevation (ft) 4,874.00		Original KB Elevation (ft) 4,902.00		KB-Ground Distance (ft) 28.00		Spud Date 4/22/2022 23:30		Rig Release Date 4/26/2022 18:00	
						On Production Date		Abandon Date	

Casing Run Tally

Run #	Ref #	Item Des	OD (in)	Wt (lb/ft)	Grade	Run?	Len (ft)	Centralized?	Ext Jw/ry	Connections	Top (ftKB)	Cum Len (ft)
193	185	Casing Joints	5 1/2	20.00	P-110	Yes	40.90	Yes			9,901.0	8,009.97
195	187	Casing Joints	5 1/2	20.00	P-110	Yes	42.80	Yes			9,814.9	8,096.15
197	189	Casing Joints	5 1/2	20.00	P-110	Yes	43.32	Yes			9,728.2	8,182.77
199	191	Casing Joints	5 1/2	20.00	P-110	Yes	42.58	Yes			9,644.7	8,266.35
201	193	Casing Joints	5 1/2	20.00	P-110	Yes	42.98	Yes			9,558.7	8,352.35
203	195	Casing Joints	5 1/2	20.00	P-110	Yes	43.40	Yes			9,472.6	8,438.36
205	197	Casing Joints	5 1/2	20.00	P-110	Yes	43.25	Yes			9,386.0	8,524.96
207	199	Casing Joints	5 1/2	20.00	P-110	Yes	43.41	Yes			9,299.3	8,611.71
209	201	Casing Joints	5 1/2	20.00	P-110	Yes	40.68	Yes			9,215.6	8,695.40
211	203	Casing Joints	5 1/2	20.00	P-110	Yes	43.02	Yes			9,129.5	8,781.52
213	205	Casing Joints	5 1/2	20.00	P-110	Yes	43.02	Yes			9,043.1	8,867.86
215	207	Casing Joints	5 1/2	20.00	P-110	Yes	42.00	Yes			8,958.4	8,952.57
217	209	Casing Joints	5 1/2	20.00	P-110	Yes	43.62	Yes			8,871.7	9,039.31
219	211	Casing Joints	5 1/2	20.00	P-110	Yes	42.85	Yes			8,787.2	9,123.81
221	213	Casing Joints	5 1/2	20.00	P-110	Yes	40.15	Yes			8,703.4	9,207.65
223	215	Casing Joints	5 1/2	20.00	P-110	Yes	40.66	Yes			8,619.5	9,291.53
225	217	Casing Joints	5 1/2	20.00	P-110	Yes	43.60	Yes			8,532.5	9,378.52
227	219	Casing Joints	5 1/2	20.00	P-110	Yes	43.04	Yes			8,446.4	9,464.64
229	221	Casing Joints	5 1/2	20.00	P-110	Yes	43.41	Yes			8,359.9	9,551.11
231	223	Casing Joints	5 1/2	20.00	P-110	Yes	41.95	Yes			8,275.2	9,635.81
233	225	Casing Joints	5 1/2	20.00	P-110	Yes	44.02	Yes			8,188.2	9,722.83
235	227	Casing Joints	5 1/2	20.00	P-110	Yes	43.00	Yes			8,103.8	9,807.18
237	229	Casing Joints	5 1/2	20.00	P-110	Yes	42.58	Yes			8,019.1	9,891.91
239		Marker Joint C	5 1/2	20.00	P-110	Yes	10.25	Yes			7,965.8	9,945.18
240	231	Casing Joints	5 1/2	20.00	P-110	Yes	42.88	Yes			7,922.9	9,988.06
241	232	Casing Joints	5 1/2	20.00	P-110	Yes	42.85	Yes			7,880.1	10,030.91
242	233	Casing Joints	5 1/2	20.00	P-110	Yes	41.95	Yes			7,838.1	10,072.86
243	234	Casing Joints	5 1/2	20.00	P-110	Yes	42.30	Yes			7,795.8	10,115.16
244	235	Casing Joints	5 1/2	20.00	P-110	Yes	43.34	Yes			7,752.5	10,158.50
245	236	Casing Joints	5 1/2	20.00	P-110	Yes	41.08	Yes			7,711.4	10,199.58
246	237	Casing Joints	5 1/2	20.00	P-110	Yes	43.34	Yes			7,668.1	10,242.92



Centralizer Depths

Well Name: Bost Farm 39N-8B-L

Production, Set Depth: 17,911.0ftKB

API 05123514470000		Surface Legal Location SWNW 7 5N 66W		Field Name Wattenberg		State CO		Well Configuration Type Horizontal			
Ground Elevation (ft) 4,874.00		Original KB Elevation (ft) 4,902.00		KB-Ground Distance (ft) 28.00		Spud Date 4/22/2022 23:30		Rig Release Date 4/26/2022 18:00			
								On Production Date		Abandon Date	

Casing Run Tally

Run #	Ref #	Item Des	OD (in)	Wt (lb/ft)	Grade	Run?	Len (ft)	Centralized?	Ext Jw/ry	Connections	Top (ftKB)	Cum Len (ft)
247	238	Casing Joints	5 1/2	20.00	P-110	Yes	43.05	Yes			7,625.0	10,285.97
248	239	Casing Joints	5 1/2	20.00	P-110	Yes	43.34	Yes			7,581.7	10,329.31
249	240	Casing Joints	5 1/2	20.00	P-110	Yes	43.08	Yes			7,538.6	10,372.39
250	241	Casing Joints	5 1/2	20.00	P-110	Yes	43.41	Yes			7,495.2	10,415.80
251	242	Casing Joints	5 1/2	20.00	P-110	Yes	42.14	Yes			7,453.1	10,457.94
252	243	Casing Joints	5 1/2	20.00	P-110	Yes	41.02	Yes			7,412.0	10,498.96
253	244	Casing Joints	5 1/2	20.00	P-110	Yes	40.30	Yes			7,371.7	10,539.26
254	245	Casing Joints	5 1/2	20.00	P-110	Yes	42.08	Yes			7,329.7	10,581.34
255	246	Casing Joints	5 1/2	20.00	P-110	Yes	40.42	Yes			7,289.2	10,621.76
256	247	Casing Joints	5 1/2	20.00	P-110	Yes	42.22	Yes			7,247.0	10,663.98
257	248	Casing Joints	5 1/2	20.00	P-110	Yes	41.92	Yes			7,205.1	10,705.90
258	249	Casing Joints	5 1/2	20.00	P-110	Yes	43.35	Yes			7,161.8	10,749.25
259	250	Casing Joints	5 1/2	20.00	P-110	Yes	41.82	Yes			7,119.9	10,791.07
260	251	Casing Joints	5 1/2	20.00	P-110	Yes	42.66	Yes			7,077.3	10,833.73
261	252	Casing Joints	5 1/2	20.00	P-110	Yes	40.88	Yes			7,036.4	10,874.61
262	253	Casing Joints	5 1/2	20.00	P-110	Yes	43.35	Yes			6,993.0	10,917.96
263	254	Casing Joints	5 1/2	20.00	P-110	Yes	43.35	Yes			6,949.7	10,961.31
264	255	Casing Joints	5 1/2	20.00	P-110	Yes	41.10	Yes			6,908.6	11,002.41
265	256	Casing Joints	5 1/2	20.00	P-110	Yes	42.24	Yes			6,866.4	11,044.65
266	257	Casing Joints	5 1/2	20.00	P-110	Yes	43.28	Yes			6,823.1	11,087.93
267	258	Casing Joints	5 1/2	20.00	P-110	Yes	43.10	Yes			6,780.0	11,131.03
268	259	Casing Joints	5 1/2	20.00	P-110	Yes	43.60	Yes			6,736.4	11,174.63
269	260	Casing Joints	5 1/2	20.00	P-110	Yes	43.20	Yes			6,693.2	11,217.83
270	261	Casing Joints	5 1/2	20.00	P-110	Yes	43.36	Yes			6,649.8	11,261.19
271		Marker Joint G	5 1/2	20.00	P-110	Yes	20.20	Yes			6,629.6	11,281.39
272	262	Casing Joints	5 1/2	20.00	P-110	Yes	43.35	Yes			6,586.3	11,324.74
273	263	Casing Joints	5 1/2	20.00	P-110	Yes	43.06	Yes			6,543.2	11,367.80
274	264	Casing Joints	5 1/2	20.00	P-110	Yes	44.00	Yes			6,499.2	11,411.80
275	265	Casing Joints	5 1/2	20.00	P-110	Yes	43.71	Yes			6,455.5	11,455.51
276	266	Casing Joints	5 1/2	20.00	P-110	Yes	43.70	Yes			6,411.8	11,499.21
277	267	Casing Joints	5 1/2	20.00	P-110	Yes	43.38	Yes			6,368.4	11,542.59



Centralizer Depths

Well Name: Bost Farm 39N-8B-L

Production, Set Depth: 17,911.0ftKB

API 05123514470000		Surface Legal Location SWNW 7 5N 66W		Field Name Wattenberg		State CO		Well Configuration Type Horizontal	
Ground Elevation (ft) 4,874.00		Original KB Elevation (ft) 4,902.00		KB-Ground Distance (ft) 28.00		Spud Date 4/22/2022 23:30		Rig Release Date 4/26/2022 18:00	
						On Production Date		Abandon Date	

Casing Run Tally

Run #	Ref #	Item Des	OD (in)	Wt (lb/ft)	Grade	Run?	Len (ft)	Centralized?	Ext Jw/ry	Connections	Top (ftKB)	Cum Len (ft)
278	268	Casing Joints	5 1/2	20.00	P-110	Yes	43.39	Yes			6,325.0	11,585.98
279	269	Casing Joints	5 1/2	20.00	P-110	Yes	43.35	Yes			6,281.7	11,629.33
280	270	Casing Joints	5 1/2	20.00	P-110	Yes	43.63	Yes			6,238.0	11,672.96
281	271	Casing Joints	5 1/2	20.00	P-110	Yes	42.10	Yes			6,195.9	11,715.06
282	272	Casing Joints	5 1/2	20.00	P-110	Yes	43.34	Yes			6,152.6	11,758.40
283	273	Casing Joints	5 1/2	20.00	P-110	Yes	43.61	Yes			6,109.0	11,802.01
284	274	Casing Joints	5 1/2	20.00	P-110	Yes	39.84	Yes			6,069.2	11,841.85
285	275	Casing Joints	5 1/2	20.00	P-110	Yes	43.35	Yes			6,025.8	11,885.20
286	276	Casing Joints	5 1/2	20.00	P-110	Yes	43.96	Yes			5,981.8	11,929.16
287	277	Casing Joints	5 1/2	20.00	P-110	Yes	43.72	Yes			5,938.1	11,972.88
288	278	Casing Joints	5 1/2	20.00	P-110	Yes	43.58	Yes			5,894.5	12,016.46
289	279	Casing Joints	5 1/2	20.00	P-110	Yes	43.34	Yes			5,851.2	12,059.80
290	280	Casing Joints	5 1/2	20.00	P-110	Yes	43.68	Yes			5,807.5	12,103.48
291	281	Casing Joints	5 1/2	20.00	P-110	Yes	42.82	Yes			5,764.7	12,146.30
292	282	Casing Joints	5 1/2	20.00	P-110	Yes	42.42	Yes			5,722.3	12,188.72
293	283	Casing Joints	5 1/2	20.00	P-110	Yes	44.05	Yes			5,678.2	12,232.77
294	284	Casing Joints	5 1/2	20.00	P-110	Yes	43.68	Yes			5,634.6	12,276.45
295	285	Casing Joints	5 1/2	20.00	P-110	Yes	42.95	Yes			5,591.6	12,319.40
296	286	Casing Joints	5 1/2	20.00	P-110	Yes	43.35	Yes			5,548.3	12,362.75
297	287	Casing Joints	5 1/2	20.00	P-110	Yes	41.39	Yes			5,506.9	12,404.14
298	288	Casing Joints	5 1/2	20.00	P-110	Yes	41.58	Yes			5,465.3	12,445.72
299	289	Casing Joints	5 1/2	20.00	P-110	Yes	43.08	Yes			5,422.2	12,488.80
300	290	Casing Joints	5 1/2	20.00	P-110	Yes	43.32	Yes			5,378.9	12,532.12
301	291	Casing Joints	5 1/2	20.00	P-110	Yes	42.84	Yes			5,336.0	12,574.96
302	292	Casing Joints	5 1/2	20.00	P-110	Yes	43.70	Yes			5,292.3	12,618.66
303	293	Casing Joints	5 1/2	20.00	P-110	Yes	43.31	Yes			5,249.0	12,661.97
304	294	Casing Joints	5 1/2	20.00	P-110	Yes	43.08	Yes			5,206.0	12,705.05
305	295	Casing Joints	5 1/2	20.00	P-110	Yes	43.10	Yes			5,162.9	12,748.15
306	296	Casing Joints	5 1/2	20.00	P-110	Yes	42.44	Yes			5,120.4	12,790.59
307	297	Casing Joints	5 1/2	20.00	P-110	Yes	43.82	Yes			5,076.6	12,834.41
308	298	Casing Joints	5 1/2	20.00	P-110	Yes	42.78	Yes			5,033.8	12,877.19



Centralizer Depths

Well Name: Bost Farm 39N-8B-L

Production, Set Depth: 17,911.0ftKB

API 05123514470000		Surface Legal Location SWNW 7 5N 66W		Field Name Wattenberg		State CO		Well Configuration Type Horizontal	
Ground Elevation (ft) 4,874.00		Original KB Elevation (ft) 4,902.00		KB-Ground Distance (ft) 28.00		Spud Date 4/22/2022 23:30		Rig Release Date 4/26/2022 18:00	
						On Production Date		Abandon Date	

Casing Run Tally

Run #	Ref #	Item Des	OD (in)	Wt (lb/ft)	Grade	Run?	Len (ft)	Centralized?	Ext Jw/ry	Connections	Top (ftKB)	Cum Len (ft)
309	299	Casing Joints	5 1/2	20.00	P-110	Yes	43.35	Yes			4,990.5	12,920.54
310	300	Casing Joints	5 1/2	20.00	P-110	Yes	42.77	Yes			4,947.7	12,963.31
311	301	Casing Joints	5 1/2	20.00	P-110	Yes	43.01	Yes			4,904.7	13,006.32
312	302	Casing Joints	5 1/2	20.00	P-110	Yes	42.48	Yes			4,862.2	13,048.80
313	303	Casing Joints	5 1/2	20.00	P-110	Yes	43.68	Yes			4,818.5	13,092.48
314	304	Casing Joints	5 1/2	20.00	P-110	Yes	43.24	Yes			4,775.3	13,135.72
315	305	Casing Joints	5 1/2	20.00	P-110	Yes	43.68	Yes			4,731.6	13,179.40
316	306	Casing Joints	5 1/2	20.00	P-110	Yes	44.12	Yes			4,687.5	13,223.52
317	307	Casing Joints	5 1/2	20.00	P-110	Yes	43.39	Yes			4,644.1	13,266.91
318	308	Casing Joints	5 1/2	20.00	P-110	Yes	43.04	Yes			4,601.1	13,309.95
319	309	Casing Joints	5 1/2	20.00	P-110	Yes	43.70	Yes			4,557.4	13,353.65
320	310	Casing Joints	5 1/2	20.00	P-110	Yes	43.34	Yes			4,514.0	13,396.99
321	311	Casing Joints	5 1/2	20.00	P-110	Yes	43.40	Yes			4,470.6	13,440.39
322	312	Casing Joints	5 1/2	20.00	P-110	Yes	43.68	Yes			4,426.9	13,484.07
323	313	Casing Joints	5 1/2	20.00	P-110	Yes	44.06	Yes			4,382.9	13,528.13
324	314	Casing Joints	5 1/2	20.00	P-110	Yes	44.00	Yes			4,338.9	13,572.13
325	315	Casing Joints	5 1/2	20.00	P-110	Yes	42.35	Yes			4,296.5	13,614.48
326	316	Casing Joints	5 1/2	20.00	P-110	Yes	43.44	Yes			4,253.1	13,657.92
327	317	Casing Joints	5 1/2	20.00	P-110	Yes	43.15	Yes			4,209.9	13,701.07
328	318	Casing Joints	5 1/2	20.00	P-110	Yes	42.74	Yes			4,167.2	13,743.81
329	319	Casing Joints	5 1/2	20.00	P-110	Yes	42.30	Yes			4,124.9	13,786.11
330	320	Casing Joints	5 1/2	20.00	P-110	Yes	43.35	Yes			4,081.5	13,829.46
331	321	Casing Joints	5 1/2	20.00	P-110	Yes	43.34	Yes			4,038.2	13,872.80
332	322	Casing Joints	5 1/2	20.00	P-110	Yes	43.33	Yes			3,994.9	13,916.13
333	323	Casing Joints	5 1/2	20.00	P-110	Yes	42.14	Yes			3,952.7	13,958.27
334	324	Casing Joints	5 1/2	20.00	P-110	Yes	43.30	Yes			3,909.4	14,001.57
335	325	Casing Joints	5 1/2	20.00	P-110	Yes	43.12	Yes			3,866.3	14,044.69
336	326	Casing Joints	5 1/2	20.00	P-110	Yes	43.12	Yes			3,823.2	14,087.81
337	327	Casing Joints	5 1/2	20.00	P-110	Yes	43.46	Yes			3,779.7	14,131.27
338	328	Casing Joints	5 1/2	20.00	P-110	Yes	42.35	Yes			3,737.4	14,173.62
339	329	Casing Joints	5 1/2	20.00	P-110	Yes	43.92	Yes			3,693.5	14,217.54



Centralizer Depths

Well Name: Bost Farm 39N-8B-L

Production, Set Depth: 17,911.0ftKB

API 05123514470000		Surface Legal Location SWNW 7 5N 66W		Field Name Wattenberg		State CO		Well Configuration Type Horizontal	
Ground Elevation (ft) 4,874.00		Original KB Elevation (ft) 4,902.00		KB-Ground Distance (ft) 28.00		Spud Date 4/22/2022 23:30		Rig Release Date 4/26/2022 18:00	
						On Production Date		Abandon Date	

Casing Run Tally

Run #	Ref #	Item Des	OD (in)	Wt (lb/ft)	Grade	Run?	Len (ft)	Centralized?	Ext Jw/ry	Connections	Top (ftKB)	Cum Len (ft)
340	330	Casing Joints	5 1/2	20.00	P-110	Yes	42.64	Yes			3,650.8	14,260.18
341	331	Casing Joints	5 1/2	20.00	P-110	Yes	41.80	Yes			3,609.0	14,301.98
342	332	Casing Joints	5 1/2	20.00	P-110	Yes	44.02	Yes			3,565.0	14,346.00
343	333	Casing Joints	5 1/2	20.00	P-110	Yes	40.25	Yes			3,524.8	14,386.25
344	334	Casing Joints	5 1/2	20.00	P-110	Yes	44.02	Yes			3,480.7	14,430.27
345	335	Casing Joints	5 1/2	20.00	P-110	Yes	42.55	Yes			3,438.2	14,472.82
346	336	Casing Joints	5 1/2	20.00	P-110	Yes	43.11	Yes			3,395.1	14,515.93
347	337	Casing Joints	5 1/2	20.00	P-110	Yes	42.65	Yes			3,352.4	14,558.58
348	338	Casing Joints	5 1/2	20.00	P-110	Yes	43.51	Yes			3,308.9	14,602.09
349	339	Casing Joints	5 1/2	20.00	P-110	Yes	39.90	Yes			3,269.0	14,641.99
350	340	Casing Joints	5 1/2	20.00	P-110	Yes	41.14	Yes			3,227.9	14,683.13
351	341	Casing Joints	5 1/2	20.00	P-110	Yes	43.39	Yes			3,184.5	14,726.52
352	342	Casing Joints	5 1/2	20.00	P-110	Yes	41.96	Yes			3,142.5	14,768.48
353	343	Casing Joints	5 1/2	20.00	P-110	Yes	41.22	Yes			3,101.3	14,809.70
354	344	Casing Joints	5 1/2	20.00	P-110	Yes	42.35	Yes			3,059.0	14,852.05
355	345	Casing Joints	5 1/2	20.00	P-110	Yes	43.15	Yes			3,015.8	14,895.20
356		Cross Over A	5 1/2	20.00	P-110	Yes	5.11	Yes			3,010.7	14,900.31
358		Cross Over B	5 1/2	20.00	P-110	Yes	5.05	Yes			2,990.5	14,920.51
359	346	Casing Joints	5 1/2	20.00	P-110	Yes	43.55	Yes			2,946.9	14,964.06
360	347	Casing Joints	5 1/2	20.00	P-110	Yes	43.15	Yes			2,903.8	15,007.21
361	348	Casing Joints	5 1/2	20.00	P-110	Yes	43.08	Yes			2,860.7	15,050.29
362	349	Casing Joints	5 1/2	20.00	P-110	Yes	42.58	Yes			2,818.1	15,092.87
363	350	Casing Joints	5 1/2	20.00	P-110	Yes	43.71	Yes			2,774.4	15,136.58
364	351	Casing Joints	5 1/2	20.00	P-110	Yes	43.73	Yes			2,730.7	15,180.31
365	352	Casing Joints	5 1/2	20.00	P-110	Yes	41.12	Yes			2,689.6	15,221.43
366	353	Casing Joints	5 1/2	20.00	P-110	Yes	41.04	Yes			2,648.5	15,262.47
367	354	Casing Joints	5 1/2	20.00	P-110	Yes	43.70	Yes			2,604.8	15,306.17
368	355	Casing Joints	5 1/2	20.00	P-110	Yes	43.66	Yes			2,561.2	15,349.83
369	356	Casing Joints	5 1/2	20.00	P-110	Yes	40.44	Yes			2,520.7	15,390.27
370	357	Casing Joints	5 1/2	20.00	P-110	Yes	43.06	Yes			2,477.7	15,433.33
371	358	Casing Joints	5 1/2	20.00	P-110	Yes	41.15	Yes			2,436.5	15,474.48



Centralizer Depths

Well Name: Bost Farm 39N-8B-L

Production, Set Depth: 17,911.0ftKB

API 05123514470000		Surface Legal Location SWNW 7 5N 66W		Field Name Wattenberg		State CO		Well Configuration Type Horizontal	
Ground Elevation (ft) 4,874.00		Original KB Elevation (ft) 4,902.00		KB-Ground Distance (ft) 28.00		Spud Date 4/22/2022 23:30		Rig Release Date 4/26/2022 18:00	
						On Production Date		Abandon Date	

Casing Run Tally

Run #	Ref #	Item Des	OD (in)	Wt (lb/ft)	Grade	Run?	Len (ft)	Centralized?	Ext Jw/ry	Connections	Top (ftKB)	Cum Len (ft)
372	359	Casing Joints	5 1/2	20.00	P-110	Yes	43.72	Yes			2,392.8	15,518.20
373	360	Casing Joints	5 1/2	20.00	P-110	Yes	40.61	Yes			2,352.2	15,558.81
374	361	Casing Joints	5 1/2	20.00	P-110	Yes	40.85	Yes			2,311.3	15,599.66
375	362	Casing Joints	5 1/2	20.00	P-110	Yes	40.14	Yes			2,271.2	15,639.80
376	363	Casing Joints	5 1/2	20.00	P-110	Yes	42.21	Yes			2,229.0	15,682.01
377	364	Casing Joints	5 1/2	20.00	P-110	Yes	41.45	Yes			2,187.5	15,723.46
378	365	Casing Joints	5 1/2	20.00	P-110	Yes	42.70	Yes			2,144.8	15,766.16
379	366	Casing Joints	5 1/2	20.00	P-110	Yes	43.05	Yes			2,101.8	15,809.21
380	367	Casing Joints	5 1/2	20.00	P-110	Yes	43.05	Yes			2,058.7	15,852.26
381	368	Casing Joints	5 1/2	20.00	P-110	Yes	43.45	Yes			2,015.3	15,895.71
382	369	Casing Joints	5 1/2	20.00	P-110	Yes	41.84	Yes			1,973.5	15,937.55
383	370	Casing Joints	5 1/2	20.00	P-110	Yes	42.77	Yes			1,930.7	15,980.32
384	371	Casing Joints	5 1/2	20.00	P-110	Yes	44.04	Yes			1,886.6	16,024.36
385	372	Casing Joints	5 1/2	20.00	P-110	Yes	43.26	Yes			1,843.4	16,067.62
386	373	Casing Joints	5 1/2	20.00	P-110	Yes	42.34	Yes			1,801.0	16,109.96
387	374	Casing Joints	5 1/2	20.00	P-110	Yes	42.00	Yes			1,759.0	16,151.96
388	375	Casing Joints	5 1/2	20.00	P-110	Yes	41.93	Yes			1,717.1	16,193.89
389	376	Casing Joints	5 1/2	20.00	P-110	Yes	44.02	Yes			1,673.1	16,237.91
390	377	Casing Joints	5 1/2	20.00	P-110	Yes	44.04	Yes			1,629.1	16,281.95
391	378	Casing Joints	5 1/2	20.00	P-110	Yes	43.32	Yes			1,585.7	16,325.27
392	379	Casing Joints	5 1/2	20.00	P-110	Yes	42.10	Yes			1,543.6	16,367.37
393	380	Casing Joints	5 1/2	20.00	P-110	Yes	44.06	Yes			1,499.6	16,411.43
394	381	Casing Joints	5 1/2	20.00	P-110	Yes	43.08	Yes			1,456.5	16,454.51
395	382	Casing Joints	5 1/2	20.00	P-110	Yes	43.35	Yes			1,413.1	16,497.86
396	383	Casing Joints	5 1/2	20.00	P-110	Yes	43.36	Yes			1,369.8	16,541.22
397	384	Casing Joints	5 1/2	20.00	P-110	Yes	43.66	Yes			1,326.1	16,584.88
398	385	Casing Joints	5 1/2	20.00	P-110	Yes	43.98	Yes			1,282.1	16,628.86
399	386	Casing Joints	5 1/2	20.00	P-110	Yes	43.74	Yes			1,238.4	16,672.60
400	387	Casing Joints	5 1/2	20.00	P-110	Yes	41.34	Yes			1,197.1	16,713.94
401	388	Casing Joints	5 1/2	20.00	P-110	Yes	42.22	Yes			1,154.8	16,756.16
402	389	Casing Joints	5 1/2	20.00	P-110	Yes	43.65	Yes			1,111.2	16,799.81



Centralizer Depths

Well Name: Bost Farm 39N-8B-L

Production, Set Depth: 17,911.0ftKB

API 05123514470000		Surface Legal Location SWNW 7 5N 66W		Field Name Wattenberg		State CO		Well Configuration Type Horizontal					
Ground Elevation (ft) 4,874.00		Original KB Elevation (ft) 4,902.00		KB-Ground Distance (ft) 28.00		Spud Date 4/22/2022 23:30		Rig Release Date 4/26/2022 18:00		On Production Date		Abandon Date	

Casing Run Tally

Run #	Ref #	Item Des	OD (in)	Wt (lb/ft)	Grade	Run?	Len (ft)	Centralized?	Ext Jw/ry	Connections	Top (ftKB)	Cum Len (ft)
403	390	Casing Joints	5 1/2	20.00	P-110	Yes	43.06	Yes			1,068.1	16,842.87
404	391	Casing Joints	5 1/2	20.00	P-110	Yes	42.32	Yes			1,025.8	16,885.19
405	392	Casing Joints	5 1/2	20.00	P-110	Yes	43.20	Yes			982.6	16,928.39
406	393	Casing Joints	5 1/2	20.00	P-110	Yes	43.14	Yes			939.5	16,971.53
407	394	Casing Joints	5 1/2	20.00	P-110	Yes	41.27	Yes			898.2	17,012.80
408	395	Casing Joints	5 1/2	20.00	P-110	Yes	41.14	Yes			857.1	17,053.94
409	396	Casing Joints	5 1/2	20.00	P-110	Yes	43.35	Yes			813.7	17,097.29
410	397	Casing Joints	5 1/2	20.00	P-110	Yes	42.14	Yes			771.6	17,139.43
411	398	Casing Joints	5 1/2	20.00	P-110	Yes	43.12	Yes			728.5	17,182.55
412	399	Casing Joints	5 1/2	20.00	P-110	Yes	42.63	Yes			685.8	17,225.18
413	400	Casing Joints	5 1/2	20.00	P-110	Yes	43.08	Yes			642.7	17,268.26
414	401	Casing Joints	5 1/2	20.00	P-110	Yes	44.08	Yes			598.7	17,312.34
415	402	Casing Joints	5 1/2	20.00	P-110	Yes	44.02	Yes			554.6	17,356.36
416	403	Casing Joints	5 1/2	20.00	P-110	Yes	42.97	Yes			511.7	17,399.33
417	404	Casing Joints	5 1/2	20.00	P-110	Yes	43.14	Yes			468.5	17,442.47