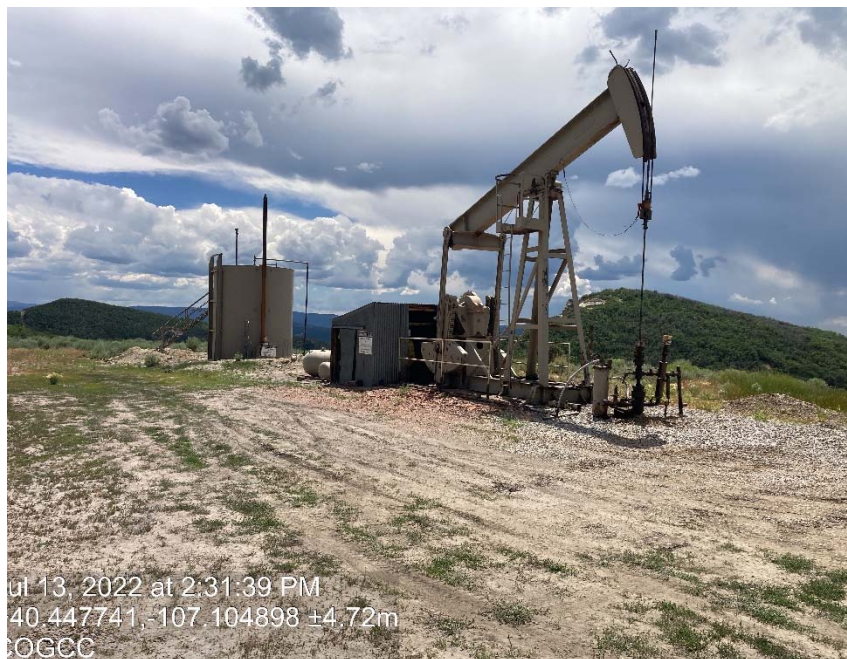


Beeman
Grassy Creek #1
Location # 232633



ul 13, 2022 at 2:31:39 PM
40 447741, -107 104898 ±4.72m
OGCC

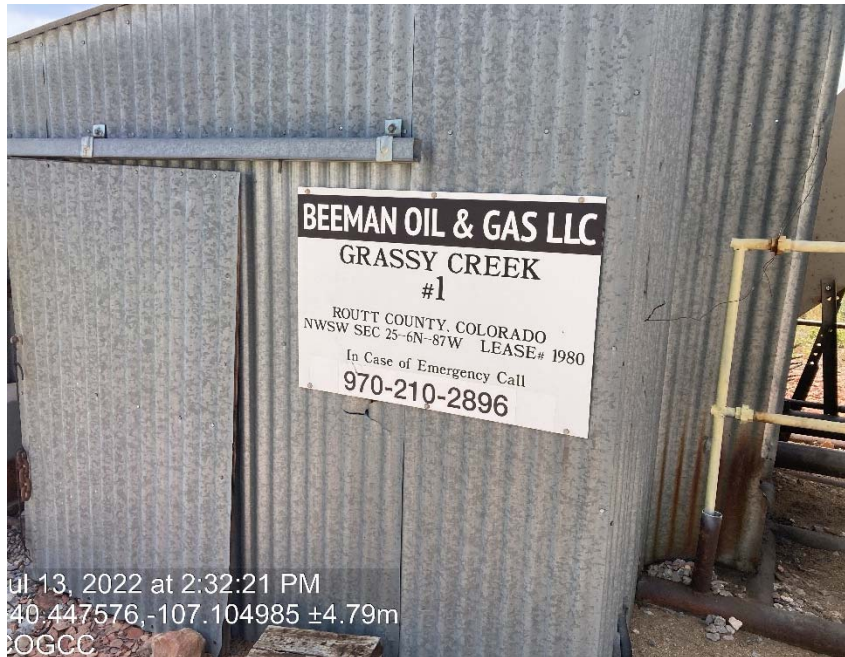
location



ul 13, 2022 at 2:32:41 PM
40 447484, -107 104983 ±4.81m
OGCC

location

Beeman
Grassy Creek #1
Location # 232633



location



Unmarked propane tanks



Beeman
Grassy Creek #1
Location # 232633



Debris

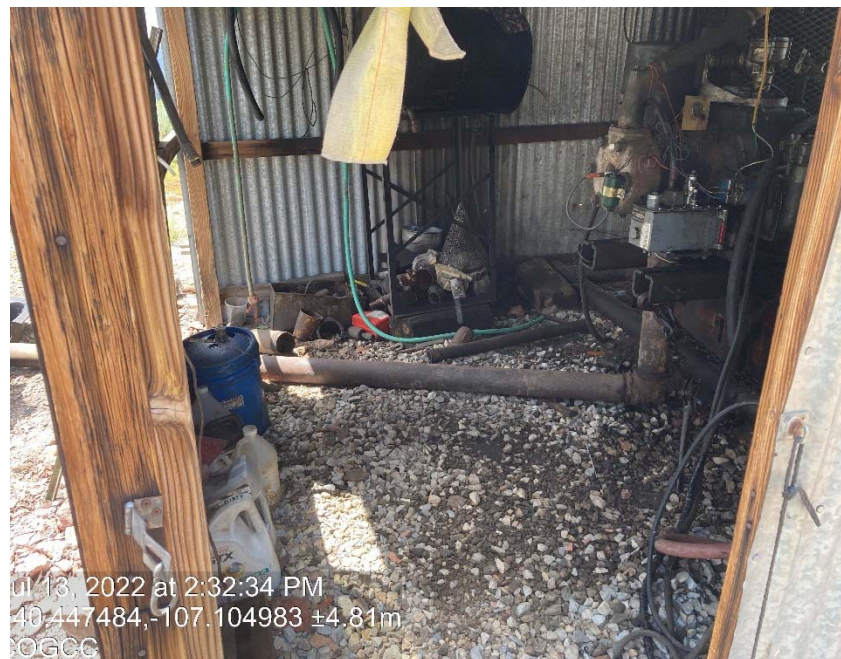


Debris

Beeman
Grassy Creek #1
Location # 232633



Debris



Debris

Beeman
Grassy Creek #1
Location # 232633



Debris



Debris

Beeman
Grassy Creek #1
Location # 232633



Lack of stabilization/compaction/erosion/BMP's



Lack of stabilization/compaction/erosion/BMP's



Beeman
Grassy Creek #1
Location # 232633



Lack of stabilization/compaction/erosion/BMP's



Lack of stabilization/compaction/erosion/BMP's



COLORADO
Oil & Gas Conservation
Commission
Department of Natural Resources

Beeman
Grassy Creek #1
Location # 232633



Lack of stabilization/compaction/erosion/BMP's



Lack of stabilization/compaction/erosion/BMP's



COLORADO
Oil & Gas Conservation
Commission
Department of Natural Resources

Beeman
Grassy Creek #1
Location # 232633



Lack of maintenance



Lack of maintenance



COLORADO
Oil & Gas Conservation
Commission
Department of Natural Resources