

Inspection Photos and Issue Report

7/14/2022

Operator: CHEVRON USA INC #16700

Facility #424210 (Location #324350)

Garfield County, CO

Aaron Trujillo

NW Reclamation Specialist

COGCC



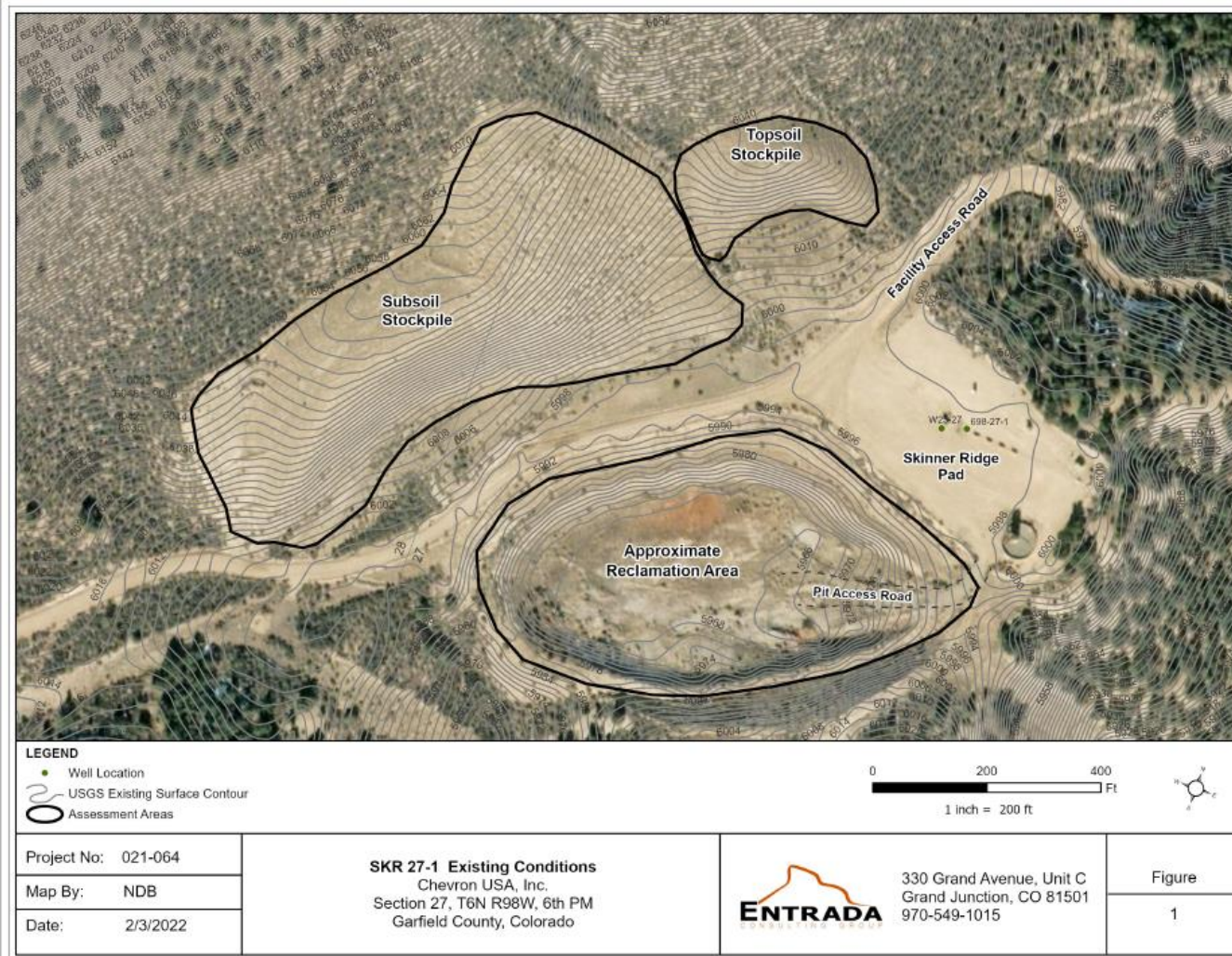


Figure taken from the 915.b request, reclamation plan (#402973868). Image provides an overview showing the location of the Pit Facility ("Reclamation Area"), subsoil stockpile, and the topsoil stockpile reclamation areas.



Inspection Photos
Operator Name: CHEVRON USA INC #16700
Facility #424210 (Location #324350)



Photo 1: Photos 1-2 taken from the north end of the Pit Facility. Photos provide an overview of the Pit Facility reclamation area from southeast, south to southwest. Pit has been backfilled, recontoured and regraded. Reclamation areas are predominantly bare and at risk to wind and water erosion; stormwater and erosion control measures are missing, or inadequate/insufficient per good engineering requirements. Additionally, Reclamation Specialist was unable to find evidence that seeding/revegetation activities were performed; seed not observed at the soil surface, no soil striations from a drill seeder was observed, and no desirable plant germination was observed.

Inspection Photos
Operator Name: CHEVRON USA INC #16700
Facility #424210 (Location #324350)



Photo 2: See comments under photo 1.



Inspection Photos
Operator Name: CHEVRON USA INC #16700
Facility #424210 (Location #324350)



Photo 3: Photos taken from the topsoil/spoils area to the west of the pit facility. See comments under photo 1.

Inspection Photos
Operator Name: CHEVRON USA INC #16700
Facility #424210 (Location #324350)



Photo 4: Photo taken from the “spoils pile” reclamation area, facing east. Photo provides overview of the reclamation areas. See comments under photo 1.

Inspection Photos
Operator Name: CHEVRON USA INC #16700
Facility #424210 (Location #324350)



Photo 5: Photos taken from the southwest end of the Pit Facility reclamation area, facing northeast and east. See comments under photo 1.

Inspection Photos
Operator Name: CHEVRON USA INC #16700
Facility #424210 (Location #324350)



Photo 6: Photo shows starting point of the “Transect #1” transect (see “Transect Data Sheet”), on the Pit Facility reclamation area, facing south.

Additional Comment: Photos 6- 18 also show that the reclamation areas are bare and at risk to wind and water erosion; stormwater and erosion control measures are missing, or inadequate/insufficient per good engineering requirements; desirable plant germination was not observed- unable to find evidence that seeding activities were performed.

Inspection Photos
Operator Name: CHEVRON USA INC #16700
Facility #424210 (Location #324350)



July 14, 2022



July 14, 2022

Photo 7: Photos show the Pit Facility reclamation areas, at the 50th point of Transect #1, facing east and west. See additional comments under photo 6.

Inspection Photos
Operator Name: CHEVRON USA INC #16700
Facility #424210 (Location #324350)



Photo 8: Pit Facility reclamation area's surface at the 50th point of Transect #1. See additional comments under photo 6.

Inspection Photos
Operator Name: CHEVRON USA INC #16700
Facility #424210 (Location #324350)



Photo 9: Photo shows the end point of the “Transect #1” transect (see “Transect Data Sheet”), on the Pit Facility, facing north. See additional comments under photo 6.

Inspection Photos
Operator Name: CHEVRON USA INC #16700
Facility #424210 (Location #324350)



Photo 10: Photo shows starting point of the “Transect #2” transect (see “Transect Data Sheet”), on the Pit Facility, facing southwest. See additional comments under photo 6.

Inspection Photos
Operator Name: CHEVRON USA INC #16700
Facility #424210 (Location #324350)



Photo 11: Photos show the Pit Facility reclamation areas, at the 50th point of Transect #2, facing northwest and southeast. See additional comments under photo 6.

Inspection Photos
Operator Name: CHEVRON USA INC #16700
Facility #424210 (Location #324350)



Photo 12: Pit Facility reclamation area's surface at the 50th point of Transect #1. See additional comments under photo 6.

Inspection Photos
Operator Name: CHEVRON USA INC #16700
Facility #424210 (Location #324350)



Photo 13: Photo shows the end point of the “Transect #2” transect (see “Transect Data Sheet”), on the Pit Facility, facing northeast. See additional comments under photo 6.

Inspection Photos
Operator Name: CHEVRON USA INC #16700
Facility #424210 (Location #324350)



Photo 14: Photo shows starting point of the “Transect #3” transect (see “Transect Data Sheet”), at the “Spoils Pile” reclamation area, facing northeast. See additional comments under photo 6.

Inspection Photos
Operator Name: CHEVRON USA INC #16700
Facility #424210 (Location #324350)



July 14, 2022



July 14, 2022

Photo 15: Photos show the “Spoils Pile” reclamation areas, at the 50th point of Transect #3, facing northwest and southeast. See additional comments under photo 6.

Inspection Photos
Operator Name: CHEVRON USA INC #16700
Facility #424210 (Location #324350)



Photo 16: “Spoils Pile” reclamation area’s surface at the 50th point of Transect #3. See additional comments under photo 6.

Inspection Photos
Operator Name: CHEVRON USA INC #16700
Facility #424210 (Location #324350)



Photo 17: Photo shows the end point of the “Transect #3” transect (see “Transect Data Sheet”), on the “Spoils Pile” reclamation area, facing northeast. See additional comments under photo 6.

Inspection Photos
Operator Name: CHEVRON USA INC #16700
Facility #424210 (Location #324350)



Photo 18: Photo shows starting point of the “Transect #4” transect (see “Transect Data Sheet”), at the “Topsoil Pile” reclamation area, facing southeast. See additional comments under photo 6.

Inspection Photos
Operator Name: CHEVRON USA INC #16700
Facility #424210 (Location #324350)



Photo 19: Photos show the “Topsoil Pile” reclamation areas, at the 50th point of Transect #4, facing northeast and southwest. See additional comments under photo 6.

Inspection Photos
Operator Name: CHEVRON USA INC #16700
Facility #424210 (Location #324350)



Photo 20: “Topsoil Pile” reclamation area’s surface at the 50th point of Transect #4. See additional comments under photo 6

Inspection Photos
Operator Name: CHEVRON USA INC #16700
Facility #424210 (Location #324350)



Photo 21: Photo shows the end point of the “Transect #4” transect (see “Transect Data Sheet”), on the “Topsoil Pile” reclamation area, facing northwest. See additional comments under photo 6.

Inspection Photos
Operator Name: CHEVRON USA INC #16700
Facility #424210 (Location #324350)



July 14, 2022



July 14, 2022

Photo 22: Photos example showing the only vegetation observed growing on the Location was an annual wheat species germinating from the straw wattles. Photos also examples showing wattles on the Location have not been installed per good engineering practices (trenched and backfilled)

Inspection Photos
Operator Name: CHEVRON USA INC #16700
Facility #424210 (Location #324350)



Photo 23: Photos examples showing wattles throughout the Reclamation areas have not been installed in accordance with good engineering practices; stormwater runoff is cutting under sections of the controls, resulting in stormwater erosion and degradation.

Inspection Photos
Operator Name: CHEVRON USA INC #16700
Facility #424210 (Location #324350)



Photo 24: Photos provide examples showing that the reclamation areas are bare and at risk to wind and water erosion. Stormwater and erosion control measures over the ~9.5 acre reclamation area are missing or insufficient per good engineering requirements, to properly manage stormwater runoff in a manner that minimizes erosion, transport of sediment, and degradation.