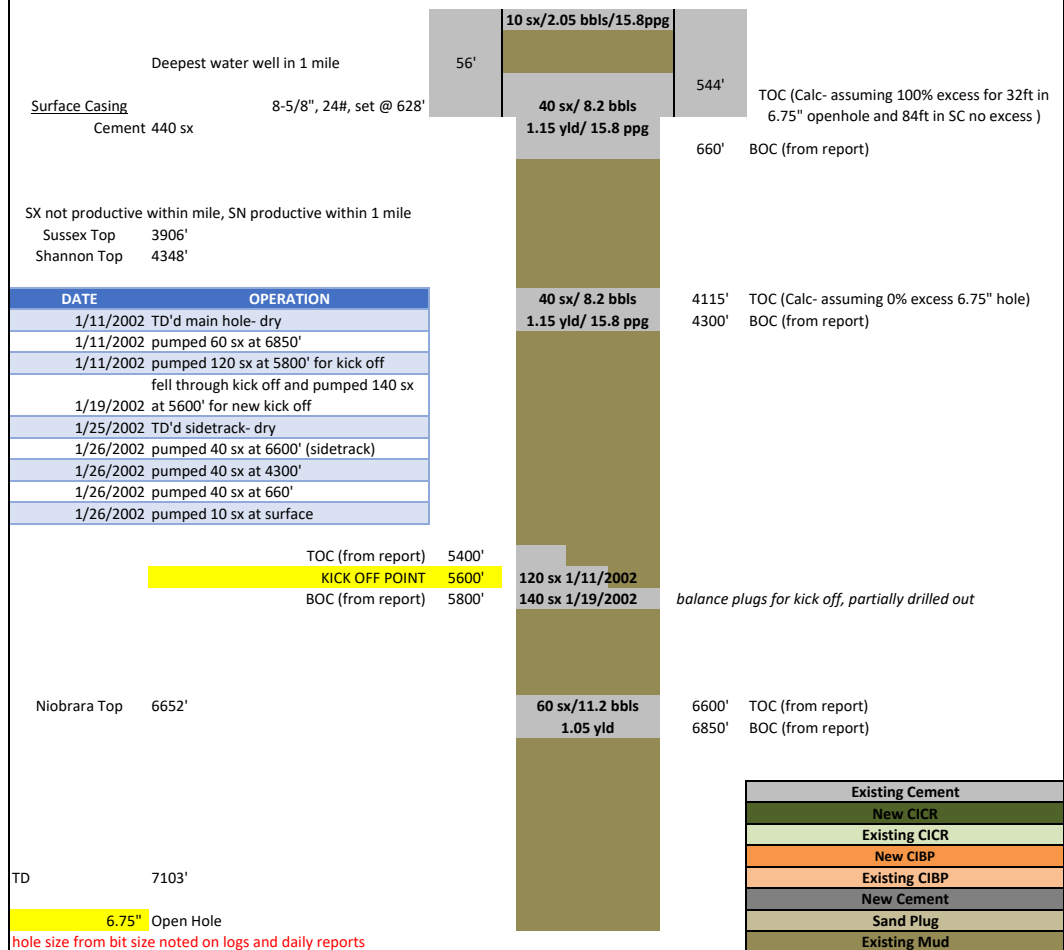


API:	05-123-20680	ELEVATION:	4785	QTR-QTR:	SE SW
WELL NAME:	14-33X THOMPSON	GROUND LEVEL:	4775	SECTION:	33
COUNTY:	WELD	MD:	7130	TWNSHIP:	5N
LATITUDE:		PBMD:		RANGE:	67W
LONGITUDE:		CREATED BY:	Jessica Lohrenz		
		PLUG DATE:	2002		

## DRY ABANDONED MAIN HOLE



## DRY ABANDONED SIDETRACK

