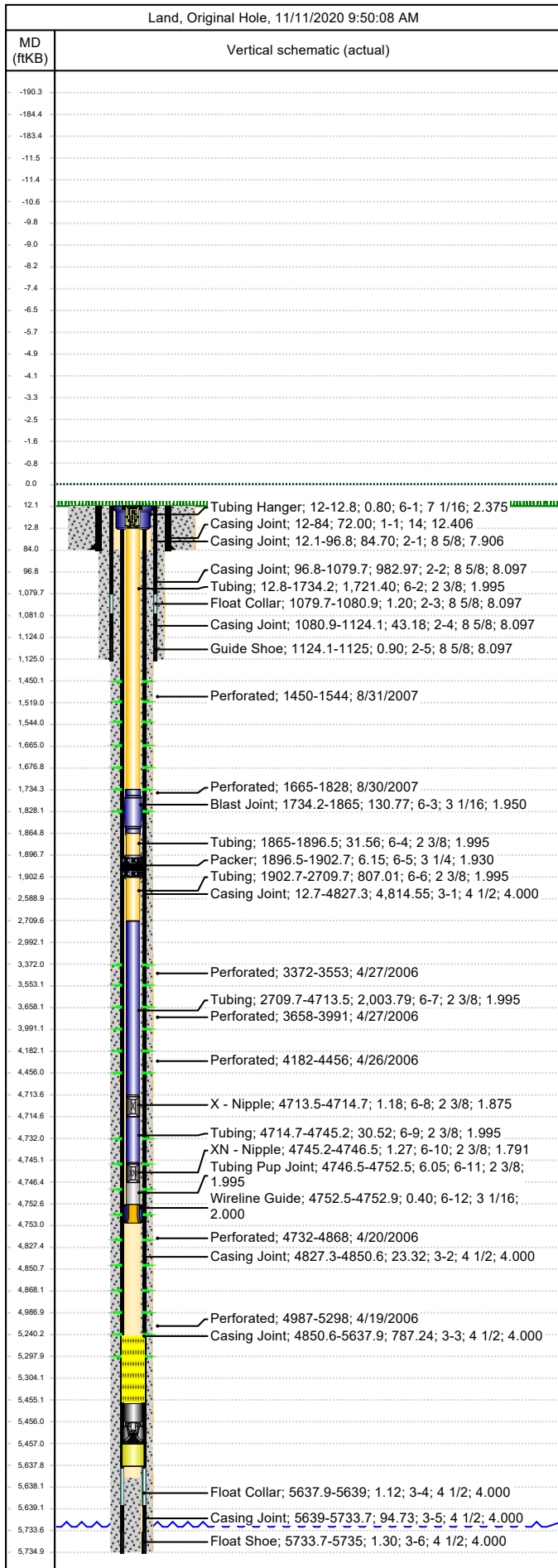




Wellbore Schematic

Well Name Skinner Ridge 698-22-01	Lease Chevron USA	Field Name Skinner Ridge	Business Unit Mid-Continent
--------------------------------------	----------------------	-----------------------------	--------------------------------



Job Details						
Job Category			Start Date		Rig/Unit End Date	
Major Rig Work Over (MRWO)			7/12/2016		7/18/2016	
Major Rig Work Over (MRWO)			7/21/2016		7/25/2016	
Casing Strings						
Csg Des	OD (in)	Wt/Len (lb/ft)	Grade	Top Thread	Set Depth (MD) (ftKB)	
Conductor	14	112.78	X-140	WELD	84	
Surface	8 5/8	24.00	J-55	STC	1125	
Production Casing	4 1/2	11.60	P-110	8RD	5735	
Tubing Strings						
Tubing - Production set at 4,752.9ftKB on 7/18/2016 00:00						
Tubing Description			Run Date		String Length (ft)	
Tubing - Production			7/18/2016		4,740.90	
					Set Depth (MD) (ftKB)	
					4,752.9	
Item Des	Jts	OD (in)	Wt (lb/ft)	Grade	Len (ft)	Btm (ftKB)
Tubing Hanger	1	7 1/16			0.80	12.8
Tubing	55	2 3/8	4.70	L-80	1,721.40	1,734.2
Blast Joint	6	3 1/16			130.77	1,865.0
Tubing	1	2 3/8	4.70	L-80	31.56	1,896.5
Packer	1	3 1/4			6.15	1,902.7
Tubing	26	2 3/8	4.70	L-80	807.01	2,709.7
Tubing	64	2 3/8	4.70	L-80	2,003.79	4,713.5
X - Nipple	1	2 3/8			1.18	4,714.7
Tubing	1	2 3/8	4.70	L-80	30.52	4,745.2
XN - Nipple	1	2 3/8			1.27	4,746.5
Tubing Pup Joint	1	2 3/8	4.70	L-80	6.05	4,752.5
Wireline Guide	1	3 1/16			0.40	4,752.9
Perforations						
Date	Top (ftKB)	Btm (ftKB)	Shot Dens (shots/ft)	Entered Shot Total	Linked Zone	
8/31/2007	1,450.0	1,544.0	2.0	20	Wasatch - Wasatch G, Original Hole	
8/30/2007	1,665.0	1,828.0	2.0	20	Wasatch - Fort Union, Original Hole	
4/27/2006	3,372.0	3,553.0	2.0	22	Mesa Verde - WMFK - Williams Fork, Original Hole	
4/27/2006	3,658.0	3,991.0	2.0	26	Mesa Verde - WMFK - Williams Fork, Original Hole	
4/26/2006	4,182.0	4,456.0	2.0	24	Mesa Verde - WMFK - Williams Fork, Original Hole	
4/20/2006	4,732.0	4,868.0	2.0	24	Mesa Verde - WMFK - Williams Fork, Original Hole	
4/19/2006	4,987.0	5,298.0	2.0	20	Mesa Verde - WMFK - Williams Fork, Original Hole	
Other Strings						
Run Date	Pull Date	Set Depth (ftKB)	Com			
Other In Hole						
Des	Top (ftKB)	Btm (ftKB)	Run Date	Pull Date	Com	
Fill (Sand / Mud / Debris)	5,240.0	5,455.0	5/23/2013			
Pump Off Bit-sub	5,455.2	5,456.0	7/30/2008		Clean out sand, tag & push sub 8' this work-over.	
Mill	5,456.0	5,457.0	7/30/2008			
Sand Fill	5,457.0	5,637.8	7/30/2008			