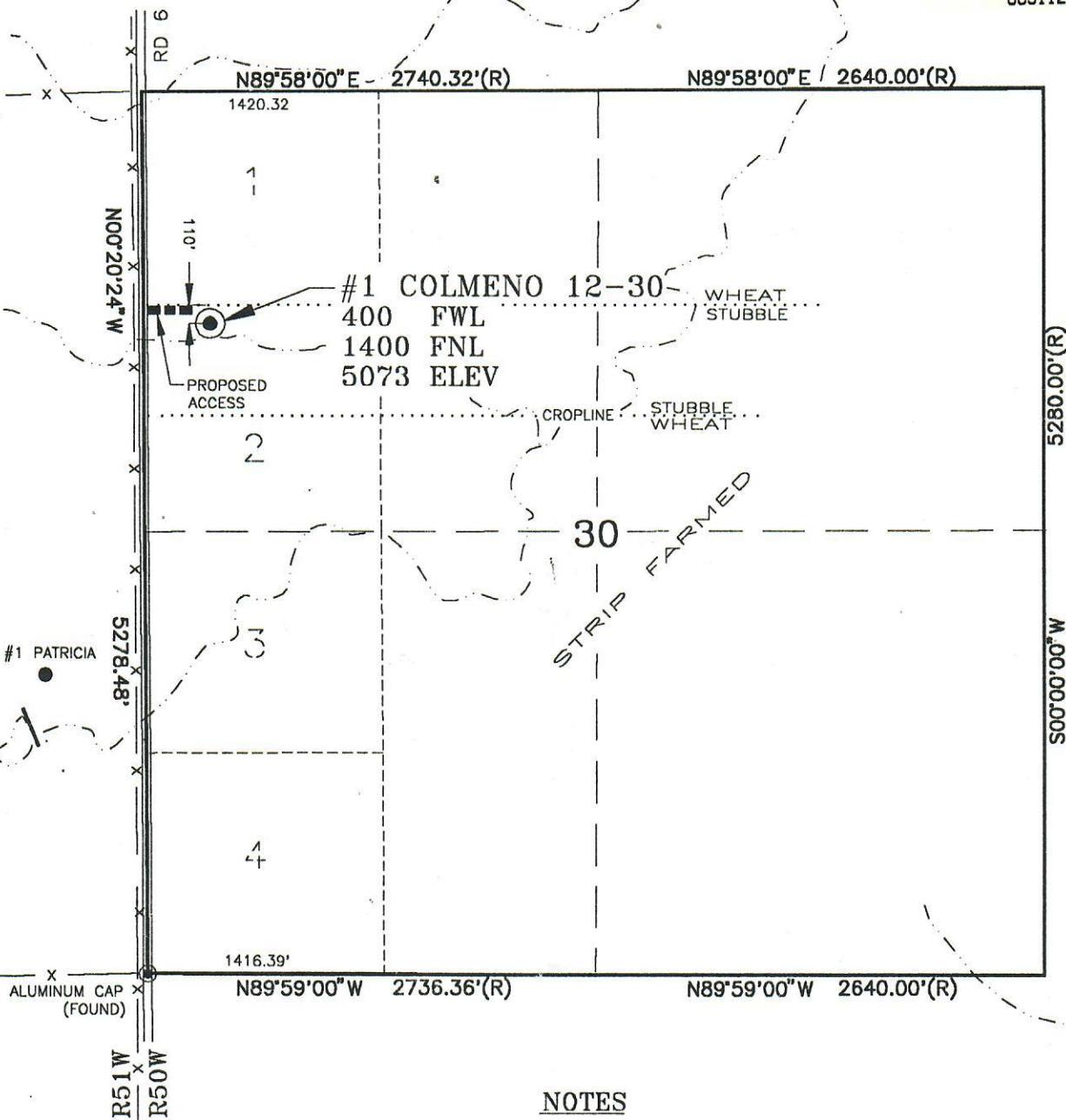


# SECTION 30 TOWNSHIP 11S RANGE 50



00511245



## LEGEND

- = PRODUCING WELL
- == = IMPROVED ROAD
- == = TRAIL
- (R) = RECORD USGLO INFORMATION
- 4 = LOT NUMBER

## NOTES

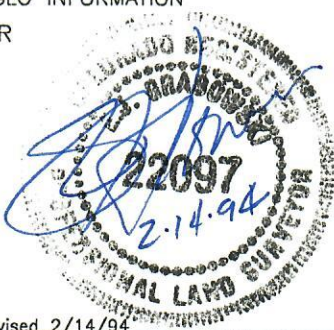
1. BASIS OF ELEVATION IS A USGS SPOT ELEVATION OF 5088 AT THE NORTHWEST CORNER OF SECTION 30 T11S R50W.
2. ALL DIMENSIONS AND SECTION LINES SHOWN HEREON ARE BASED ON FIELD MEASUREMENTS OF EXISTING MONUMENTS AND/OR PHYSICAL EVIDENCE FOUND IN THE FIELD, UNLESS OTHERWISE INDICATED.
3. PHYSICAL FEATURES SHOWN HEREON ARE FOR GRAPHICAL REPRESENTATION ONLY.
4. THIS IS NOT A LAND SURVEY OR LAND SURVEY PLAT.

1000 0 1000 2000

GRAPHIC SCALE IN FEET

JOB #	93184
DATE	12/11/93
FIELD CR	RDT/AWL
TDS/RW5	SPEAK5
CONTROL	SPEAKER
DRAWN	DCC
DWG. #	93184R3

Revised 2/14/94



**GEO SURV**  
LAND SURVEYORS  
P.O. BOX 194  
LAFAYETTE  
COLO. 80026  
303-666-0379

**WELL LOCATION MAP**  
PREPARED FOR  
**UNION PACIFIC RESOURCES**

**#1 COLMENO 12-30**  
NW 1/4 SECTION 30 T11S R50W 6th PM  
KIT CARSON COUNTY, COLORADO