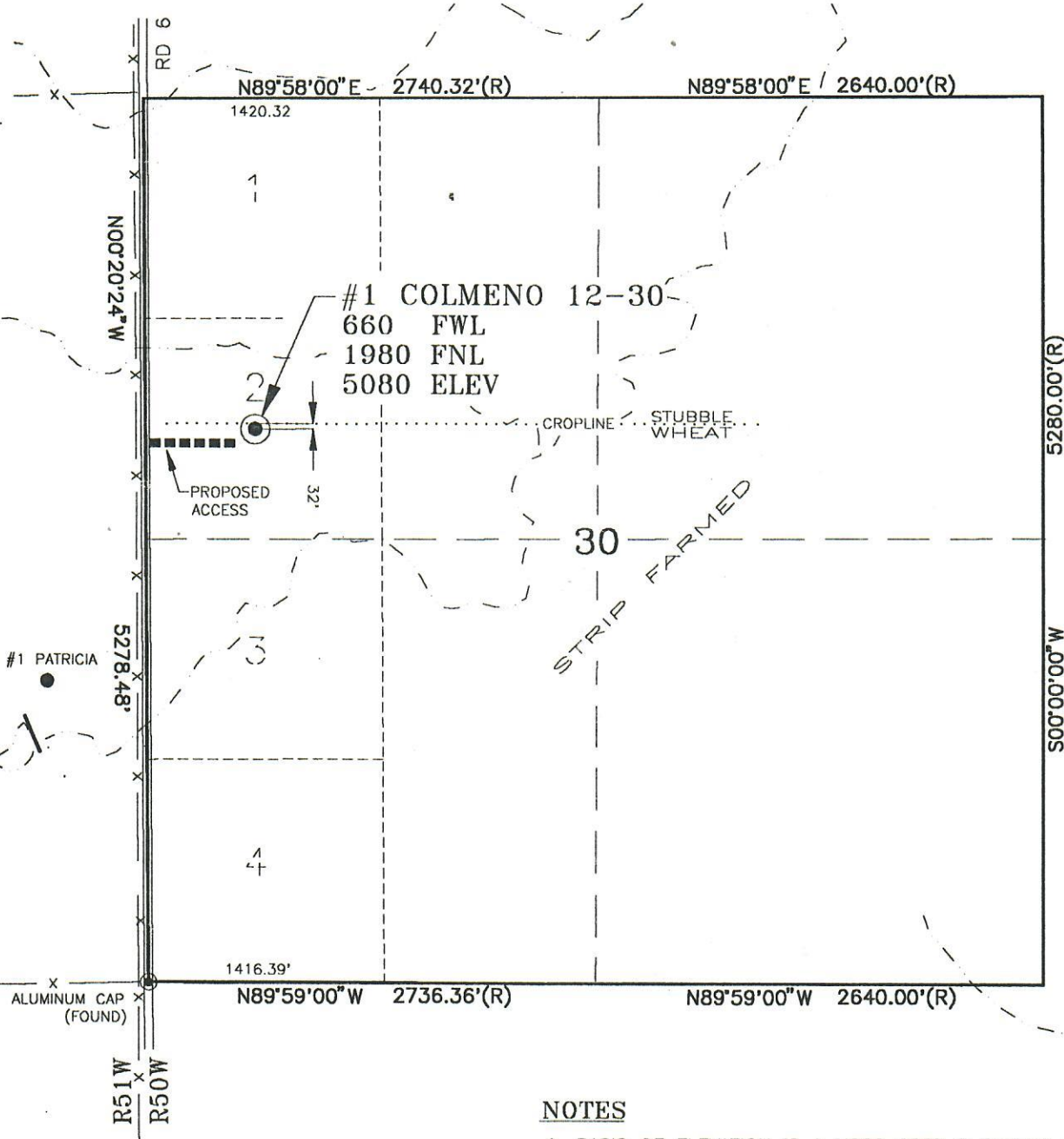




SECTION 30 TOWNSHIP 11S RANGE 50W



LEGEND

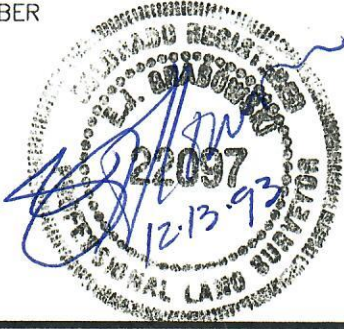
- = PRODUCING WELL
- == = IMPROVED ROAD
- == = TRAIL
- (R) = RECORD USGLO INFORMATION
- 4 = LOT NUMBER

NOTES

1. BASIS OF ELEVATION IS A USGS SPOT ELEVATION OF 5088 AT THE NORTHWEST CORNER OF SECTION 30 T11S R50W.
2. ALL DIMENSIONS AND SECTION LINES SHOWN HEREON ARE BASED ON FIELD MEASUREMENTS OF EXISTING MONUMENTS AND/OR PHYSICAL EVIDENCE FOUND IN THE FIELD, UNLESS OTHERWISE INDICATED.
3. PHYSICAL FEATURES SHOWN HEREON ARE FOR GRAPHICAL REPRESENTATION ONLY.
4. THIS IS NOT A LAND SURVEY OR LAND SURVEY PLAT.



JOB #	93184
DATE	12/11/93
FIELD CR	RDT/AWL
TDS/RW5	SPEAK5
CONTROL	SPEAKER
DRAWN	DCC
DWG. #	93184



GEO SURV
LAND SURVEYORS
P.O. BOX 194
LAFAYETTE
COLO • 80026
303-666-0379

WELL LOCATION MAP
PREPARED FOR
UNION PACIFIC RESOURCES
#1 COLMENO 12-30
NW 1/4 SECTION 30 T11S R50W 6th PM
KIT CARSON COUNTY, COLORADO