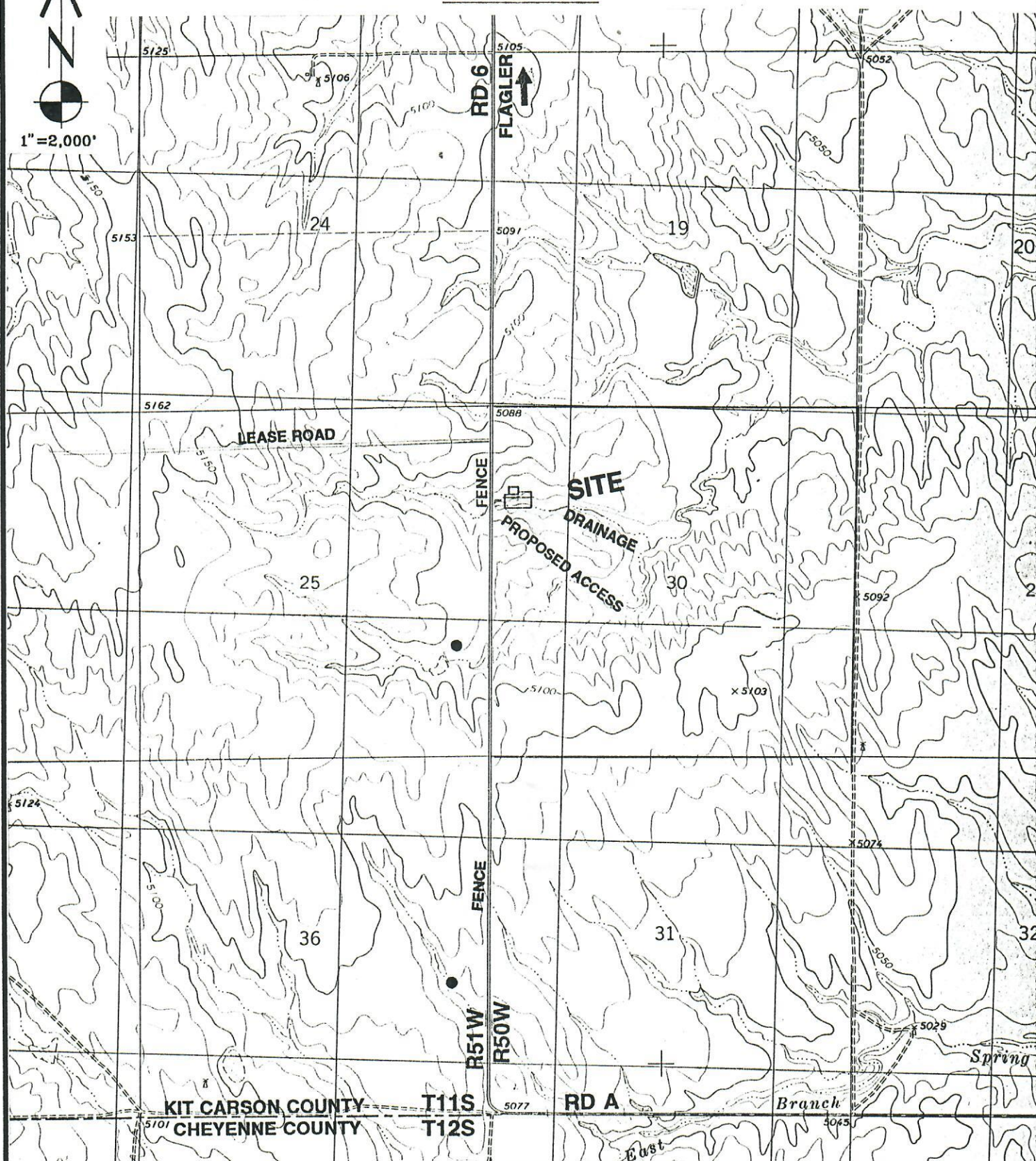



$$1'' = 2,000'$$


HUGO 4SE
93184R3 Revised 2/14/93



LAND SURVEYORS
P.O. BOX 194
LAFAYETTE
COLO • 80026
303•666-0379

TOPOGRAPHIC MAP
PREPARED FOR
UNION PACIFIC RESOURCES

#1 COLMENO 12-30
NW 1/4 SECTION 30 T11S R50W 6th PM
KIT CARSON COUNTY, COLORADO