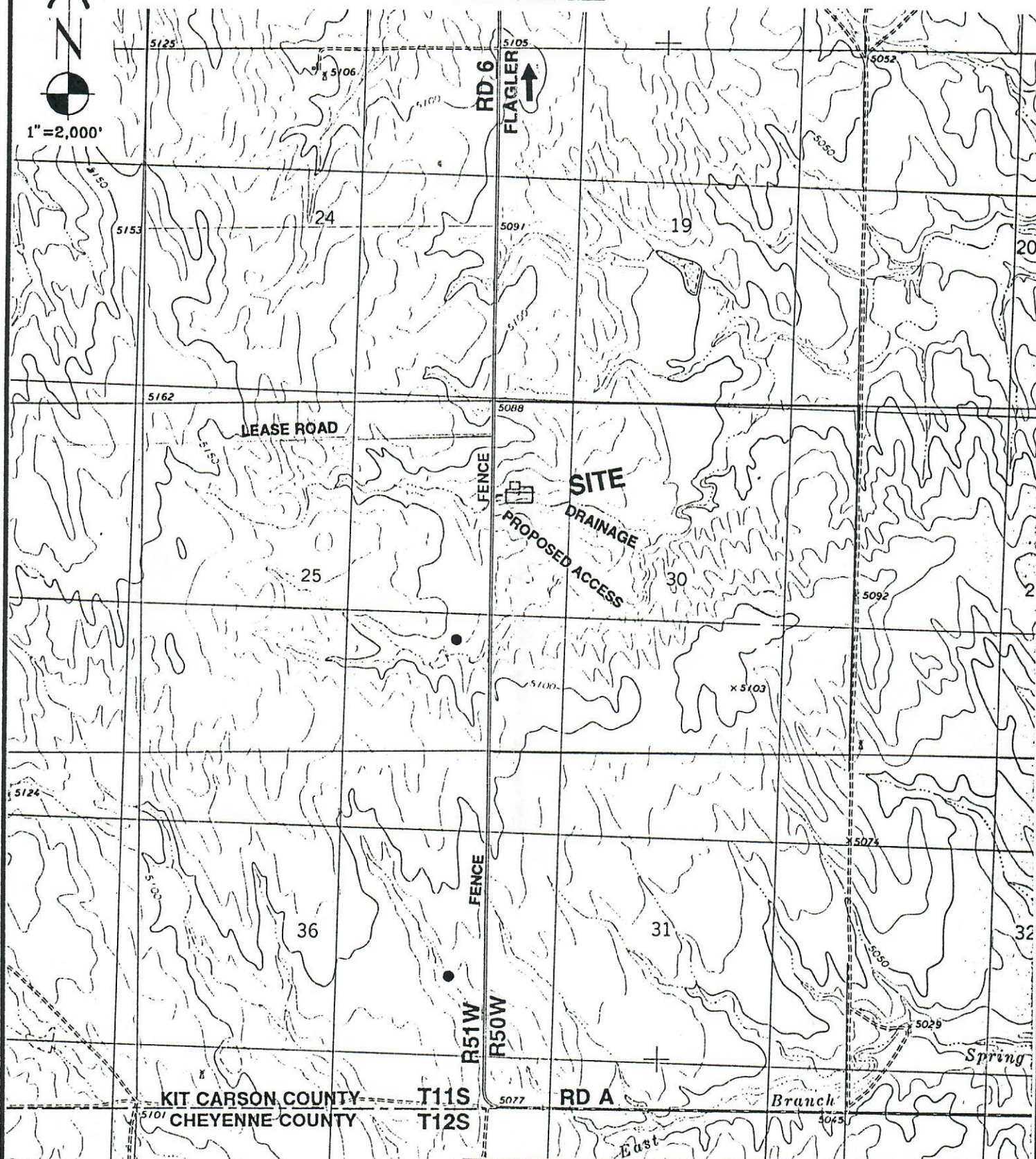


 $1'' = 2,000'$ 

HUGO 4SE  
93184R3 Revised 2/14/93



LAND SURVEYORS  
P.O. BOX 194  
LAFAYETTE  
COLO • 80026  
303 • 666-0379

TOPOGRAPHIC MAP  
PREPARED FOR  
UNION PACIFIC RESOURCES

#1 COLMENO 12-30  
NW 1/4 SECTION 30 T11S R50W 6th PM  
KIT CARSON COUNTY, COLORADO