

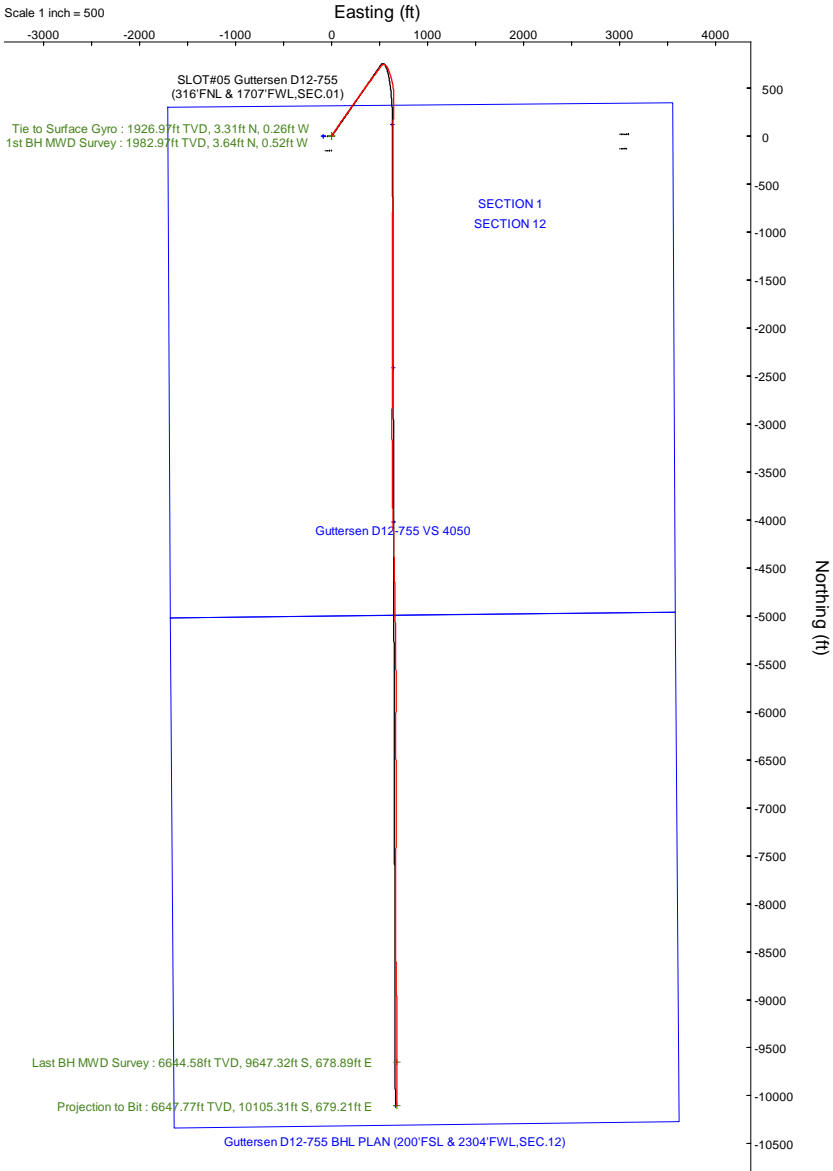
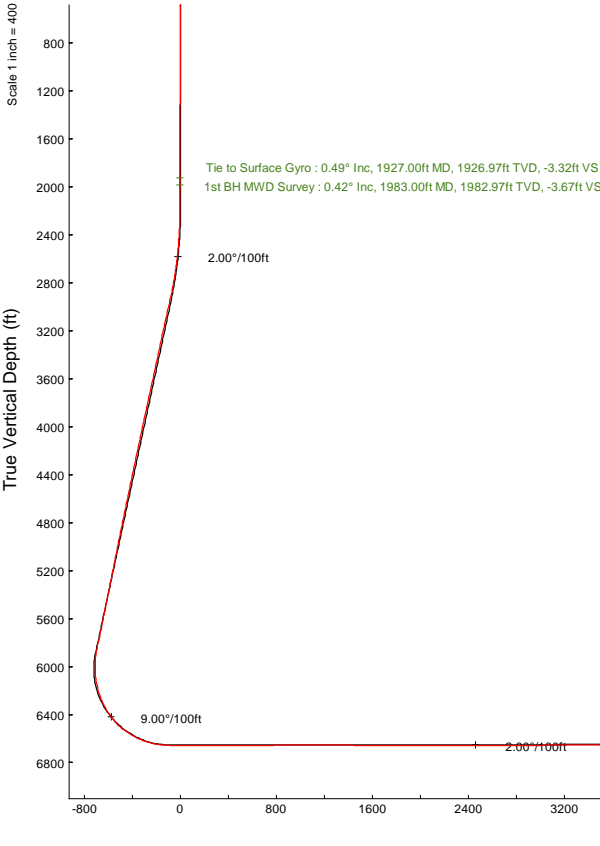
NOBLE ENERGY, INC



Location:	COLORADO	Slot:	SLOT#05 Guttersen D12-755 (316°FNL & 1707°FWL,SEC.01)
Field:	WELD COUNTY (NOBLE NAD 83 GRID)	Well:	Guttersen D12-755
Facility:	SEC.01-T03N-R64W	Wellbore:	Guttersen D12-755 PWB

Plot reference wellpath is Guttersen D12-755 (REV-A.0) PWP	Grid System: NAD83 / Lambert Colorado SP, Northern Zone (501), US feet
True vertical depths are referenced to (4745'GL+30'KB@4775'RKB) (RKB)	North Reference: Grid north
Reference wellpath measured depths are referenced to (4745'GL+30'KB@4775'RKB) (RKB)	Scale: True distance
(4745'GL+30'KB@4775'RKB) (RKB) to Mean Sea Level: 4775 feet	Coordinates are in feet referenced to Slot
Mean Sea Level to Ground level (At Slot: SLOT#05 Guttersen D12-755 (316°FNL & 1707°FWL,SEC.01)): 0 feet	Depths are in feet
Offset wellpath MDs are referenced to each path's default MD datum	Created by: guenaler on 2022-06-02; Database: WA_Denver

Location Information							
Facility Name			Grid East (US ft)	Grid North (US ft)	Latitude	Longitude	
SEC.01-T03N-R64W			3278229.920	1339437.650	40°15'39.1032"N	104°30'10.9152"W	
Slot		Local N (ft)	Local E (ft)	Grid East (US ft)	Grid North (US ft)	Latitude	Longitude
SLOT#05 Guttersen D12-755 (316°FNL & 1707°FWL,SEC.01)		0.28	89.67	3278319.788	1339437.935	40°15'39.0960"N	104°30'9.7560"W
(4745'GL+30'KB@4775'RKB) (RKB) to Ground level (At Slot: SLOT#05 Guttersen D12-755 (316°FNL & 1707°FWL,SEC.01))						4775ft	
Mean Sea Level to Ground level (At Slot: SLOT#05 Guttersen D12-755 (316°FNL & 1707°FWL,SEC.01))						0ft	
(4745'GL+30'KB@4775'RKB) (RKB) to Mean Sea Level						4775ft	





Actual Wellpath Report

Guttersen D12-755 AWP

Page 1 of 7



REFERENCE WELLPATH IDENTIFICATION

Operator	NOBLE ENERGY, INC	Well	Guttersen D12-755
Field	WELD COUNTY (NOBLE NAD 83 GRID)	API	05-123-49077
Facility	SEC.01-T03N-R64W	Wellbore	Guttersen D12-755 AWB
Slot	SLOT#05 Guttersen D12-755 (316'FNL & 1707'FWL,SEC.01)		

REPORT SETUP INFORMATION

Projection System	NAD83 / Lambert Colorado SP, Northern Zone (501), US feet	Software System	WellArchitect® 6.0
North Reference	Grid	User	Guenaler
Scale	0.999957	Report Generated	6/2/2022 at 4:35:12 PM
Convergence at slot	0.64° East	Database	WA_Denver

WELLPATH LOCATION

	Local coordinates		Grid coordinates		Geographic coordinates	
	North[ft]	East[ft]	Easting[US ft]	Northing[US ft]	Latitude	Longitude
Slot Location	0.28	89.87	3278319.79	1339437.94	40°15'39.0960"N	104°30'9.7560"W
Facility Reference Pt			3278229.92	1339437.65	40°15'39.1032"N	104°30'10.9152"W
Field Reference Pt			3000000.00	4454105.15	48°46'34.3150"N	105°30'0.0000"W

WELLPATH DATUM

Calculation method	Minimum curvature	(4745'GL+30'KB@4775'RKB) (RKB) to Facility Vertical Datum	4775.00ft
Horizontal Reference Pt	Slot	(4745'GL+30'KB@4775'RKB) (RKB) to Mean Sea Level	4775.00ft
Vertical Reference Pt	(4745'GL+30'KB@4775'RKB) (RKB)	(4745'GL+30'KB@4775'RKB) (RKB) to Ground Level at Slot (SLOT#05 Guttersen D12-755 (316'FNL & 1707'FWL,SEC.01))	4775.00ft
MD Reference Pt	(4745'GL+30'KB@4775'RKB) (RKB)	Section Origin	N 0.00, E 0.00 ft
Field Vertical Reference	Mean Sea Level	Section Azimuth	176.25°



Actual Wellpath Report

Guttersen D12-755 AWP
Page 2 of 7



REFERENCE WELLPATH IDENTIFICATION

Operator	NOBLE ENERGY, INC	Well	Guttersen D12-755
Field	WELD COUNTY (NOBLE NAD 83 GRID)	API	05-123-49077
Facility	SEC.01-T03N-R64W	Wellbore	Guttersen D12-755 AWB
Slot	SLOT#05 Guttersen D12-755 (316'FNL & 1707'FWL,SEC.01)		

WELLPATH DATA (174 stations)

MD [ft]	Inclination [°]	Azimuth [°]	TVD [ft]	Vert Sect [ft]	North [ft]	East [ft]	Latitude	Longitude	DLS [°/100ft]	Comments
0.00	0.000	300.370	0.00	0.00	0.00	0.00	40°15'39.0960"N	104°30'9.7560"W	0.00	
80.00	0.330	300.370	80.00	-0.13	0.12	-0.20	40°15'39.0972"N	104°30'9.7585"W	0.41	
173.00	0.520	329.700	173.00	-0.66	0.62	-0.64	40°15'39.1022"N	104°30'9.7642"W	0.30	
263.00	0.190	164.340	263.00	-0.88	0.83	-0.81	40°15'39.1042"N	104°30'9.7663"W	0.78	
358.00	0.410	275.510	358.00	-0.78	0.71	-1.10	40°15'39.1031"N	104°30'9.7701"W	0.54	
452.00	0.340	151.390	451.99	-0.58	0.49	-1.31	40°15'39.1010"N	104°30'9.7728"W	0.71	
547.00	0.280	73.450	546.99	-0.37	0.31	-0.95	40°15'39.0992"N	104°30'9.7682"W	0.41	
641.00	0.300	15.710	640.99	-0.66	0.61	-0.66	40°15'39.1021"N	104°30'9.7644"W	0.30	
735.00	0.180	21.340	734.99	-1.02	0.99	-0.54	40°15'39.1058"N	104°30'9.7628"W	0.13	
830.00	0.500	246.540	829.99	-1.02	0.96	-0.87	40°15'39.1056"N	104°30'9.7670"W	0.67	
924.00	0.330	315.900	923.99	-1.09	0.99	-1.43	40°15'39.1060"N	104°30'9.7743"W	0.52	
1018.00	0.520	296.280	1017.99	-1.51	1.38	-2.00	40°15'39.1098"N	104°30'9.7816"W	0.25	
1113.00	0.270	285.490	1112.98	-1.79	1.63	-2.60	40°15'39.1124"N	104°30'9.7894"W	0.27	
1207.00	0.220	302.900	1206.98	-1.98	1.79	-2.97	40°15'39.1140"N	104°30'9.7940"W	0.09	
1301.00	0.470	40.620	1300.98	-2.36	2.18	-2.87	40°15'39.1178"N	104°30'9.7927"W	0.58	
1396.00	0.260	40.080	1395.98	-2.79	2.64	-2.48	40°15'39.1223"N	104°30'9.7876"W	0.22	
1490.00	0.150	33.140	1489.98	-3.05	2.90	-2.27	40°15'39.1249"N	104°30'9.7849"W	0.12	
1584.00	0.250	106.880	1583.98	-3.07	2.95	-2.01	40°15'39.1253"N	104°30'9.7815"W	0.27	
1679.00	0.570	111.260	1678.98	-2.80	2.71	-1.37	40°15'39.1230"N	104°30'9.7733"W	0.34	
1773.00	0.420	83.990	1772.97	-2.61	2.58	-0.59	40°15'39.1216"N	104°30'9.7633"W	0.29	
1867.00	0.340	9.720	1866.97	-2.90	2.89	-0.20	40°15'39.1246"N	104°30'9.7582"W	0.49	
1927.00	0.490	339.080	1926.97	-3.32	3.31	-0.26	40°15'39.1287"N	104°30'9.7589"W	0.44	Tie to Surface Gyro
1983.00	0.420	302.010	1982.97	-3.67	3.64	-0.52	40°15'39.1320"N	104°30'9.7622"W	0.53	1st BH MWD Survey
2078.00	0.090	198.020	2077.97	-3.80	3.75	-0.84	40°15'39.1332"N	104°30'9.7663"W	0.47	
2173.00	0.030	58.650	2172.97	-3.74	3.70	-0.84	40°15'39.1326"N	104°30'9.7663"W	0.12	
2267.00	1.920	33.320	2266.95	-5.01	5.02	0.04	40°15'39.1456"N	104°30'9.7547"W	2.01	
2361.00	3.850	35.500	2360.83	-8.71	8.91	2.74	40°15'39.1837"N	104°30'9.7194"W	2.06	
2456.00	4.810	34.980	2455.55	-14.29	14.77	6.88	40°15'39.2412"N	104°30'9.6652"W	1.01	
2550.00	7.140	35.470	2549.04	-21.89	22.76	12.53	40°15'39.3195"N	104°30'9.5911"W	2.48	
2645.00	9.700	34.180	2643.00	-32.78	34.19	20.45	40°15'39.4316"N	104°30'9.4873"W	2.70	
2740.00	11.390	33.260	2736.40	-46.58	48.65	30.09	40°15'39.5734"N	104°30'9.3608"W	1.79	
2834.00	13.230	32.930	2828.23	-62.62	65.45	41.03	40°15'39.7381"N	104°30'9.2173"W	1.96	
2928.00	15.850	33.790	2919.21	-81.43	85.15	54.02	40°15'39.9313"N	104°30'9.0469"W	2.80	
3023.00	15.510	34.540	3010.68	-101.68	106.39	68.43	40°15'40.1397"N	104°30'8.8579"W	0.42	

WELLPATH DATA (174 stations)

MD [ft]	Inclination [°]	Azimuth [°]	TVD [ft]	Vert Sect [ft]	North [ft]	East [ft]	Latitude	Longitude	DLS [°/100ft]	Comments
3117.00	15.890	33.090	3101.17	-121.85	127.52	82.59	40°15'40.3469"N	104°30'8.6723"W	0.58	
3212.00	15.390	33.970	3192.65	-142.22	148.87	96.73	40°15'40.5563"N	104°30'8.4868"W	0.58	
3306.00	15.130	34.580	3283.34	-161.71	169.32	110.66	40°15'40.7568"N	104°30'8.3041"W	0.33	
3400.00	15.320	36.340	3374.04	-180.84	189.42	124.98	40°15'40.9538"N	104°30'8.1165"W	0.53	
3495.00	15.330	35.320	3465.66	-200.19	209.78	139.68	40°15'41.1533"N	104°30'7.9239"W	0.28	
3684.00	15.710	35.230	3647.77	-239.47	251.06	168.89	40°15'41.5581"N	104°30'7.5413"W	0.20	
3778.00	15.880	34.730	3738.22	-259.43	272.03	183.55	40°15'41.7636"N	104°30'7.3490"W	0.23	
3872.00	15.380	34.900	3828.75	-279.23	292.82	198.01	40°15'41.9674"N	104°30'7.1595"W	0.53	
3967.00	15.280	35.700	3920.36	-298.74	313.32	212.52	40°15'42.1684"N	104°30'6.9694"W	0.25	
4062.00	15.450	35.760	4011.97	-318.17	333.75	227.22	40°15'42.3686"N	104°30'6.7768"W	0.18	
4156.00	15.140	36.210	4102.64	-337.23	353.82	241.79	40°15'42.5653"N	104°30'6.5860"W	0.35	

Actual Wellpath Report

Guttersen D12-755 AWP
Page 3 of 7

REFERENCE WELLPATH IDENTIFICATION

Operator	NOBLE ENERGY, INC	Well	Guttersen D12-755
Field	WELD COUNTY (NOBLE NAD 83 GRID)	API	05-123-49077
Facility	SEC.01-T03N-R64W	Wellbore	Guttersen D12-755 AWB
Slot	SLOT#05 Guttersen D12-755 (316'FNL & 1707'FWL,SEC.01)		

WELLPATH DATA (174 stations)

MD [ft]	Inclination [°]	Azimuth [°]	TVD [ft]	Vert Sect [ft]	North [ft]	East [ft]	Latitude	Longitude	DLS [°/100ft]	Comments
4251.00	15.210	34.320	4194.33	-356.55	374.12	256.15	40°15'42.7643"N	104°30'6.3979"W	0.53	
4345.00	15.080	36.070	4285.06	-375.65	394.19	270.30	40°15'42.9610"N	104°30'6.2124"W	0.51	
4440.00	15.310	36.130	4376.74	-394.77	414.31	284.97	40°15'43.1582"N	104°30'6.0203"W	0.24	
4534.00	14.800	34.800	4467.52	-413.68	434.19	299.14	40°15'43.3531"N	104°30'5.8346"W	0.66	
4629.00	15.010	34.090	4559.32	-432.88	454.34	312.96	40°15'43.5507"N	104°30'5.6534"W	0.29	
4723.00	15.170	35.670	4650.08	-452.00	474.41	326.95	40°15'43.7474"N	104°30'5.4700"W	0.47	
4818.00	14.830	35.420	4741.84	-471.02	494.42	341.25	40°15'43.9435"N	104°30'5.2827"W	0.36	
4913.00	14.720	35.570	4833.70	-489.79	514.14	355.32	40°15'44.1369"N	104°30'5.0984"W	0.12	
5007.00	15.180	36.720	4924.52	-508.39	533.72	369.62	40°15'44.3288"N	104°30'4.9111"W	0.58	
5102.00	14.770	36.070	5016.29	-527.15	553.48	384.19	40°15'44.5224"N	104°30'4.7203"W	0.47	
5196.00	14.920	40.500	5107.16	-545.02	572.37	399.10	40°15'44.7073"N	104°30'4.5252"W	1.22	
5291.00	14.190	34.790	5199.11	-562.89	591.23	413.69	40°15'44.8921"N	104°30'4.3343"W	1.69	
5386.00	14.950	35.500	5291.06	-581.48	610.77	427.45	40°15'45.0836"N	104°30'4.1540"W	0.82	
5480.00	14.470	35.490	5381.98	-599.97	630.21	441.31	40°15'45.2741"N	104°30'3.9724"W	0.51	
5575.00	15.240	35.910	5473.80	-618.77	649.98	455.52	40°15'45.4680"N	104°30'3.7862"W	0.82	
5669.00	14.100	35.470	5564.73	-637.15	669.31	469.41	40°15'45.6575"N	104°30'3.6042"W	1.22	
5764.00	15.060	36.670	5656.67	-655.52	688.64	483.50	40°15'45.8468"N	104°30'3.4197"W	1.06	
5858.00	15.450	36.350	5747.36	-674.39	708.52	498.21	40°15'46.0416"N	104°30'3.2271"W	0.42	
5953.00	15.680	35.820	5838.88	-693.96	729.12	513.23	40°15'46.2435"N	104°30'3.0304"W	0.28	
6047.00	11.370	55.460	5930.30	-708.51	744.69	528.31	40°15'46.3957"N	104°30'2.8336"W	6.64	
6142.00	11.910	95.190	6023.49	-711.79	749.12	545.81	40°15'46.4375"N	104°30'2.6072"W	8.29	
6236.00	10.930	140.440	6115.81	-703.03	741.35	561.18	40°15'46.3591"N	104°30'2.4101"W	9.34	
6331.00	18.000	148.620	6207.74	-682.70	721.85	574.58	40°15'46.1649"N	104°30'2.2402"W	7.73	
6426.00	25.450	156.210	6295.95	-650.46	690.59	590.48	40°15'45.8542"N	104°30'2.0396"W	8.37	
6520.00	33.170	160.250	6377.86	-606.70	647.84	607.34	40°15'45.4299"N	104°30'1.8283"W	8.47	
6614.00	41.150	166.240	6452.74	-551.42	593.49	623.42	40°15'44.8911"N	104°30'1.6288"W	9.31	
6709.00	51.110	170.650	6518.51	-483.65	526.47	636.90	40°15'44.2273"N	104°30'1.4647"W	11.00	
6803.00	59.940	175.860	6571.69	-406.38	449.61	645.80	40°15'43.4669"N	104°30'1.3611"W	10.44	
6898.00	68.280	181.370	6613.16	-321.11	364.29	647.72	40°15'42.6236"N	104°30'1.3488"W	10.21	
6992.00	77.310	181.580	6640.94	-231.78	274.62	645.40	40°15'41.7378"N	104°30'1.3916"W	9.61	
7087.00	86.770	181.940	6654.08	-138.24	180.68	642.51	40°15'40.8099"N	104°30'1.4426"W	9.96	
7182.00	88.980	180.800	6657.60	-43.69	85.78	640.25	40°15'39.8724"N	104°30'1.4856"W	2.62	
7276.00	89.940	180.530	6658.49	50.02	-8.20	639.15	40°15'38.9438"N	104°30'1.5134"W	1.06	
7371.00	90.090	180.230	6658.46	144.77	-103.20	638.52	40°15'38.0052"N	104°30'1.5353"W	0.35	

WELLPATH DATA (174 stations)

MD [ft]	Inclination [°]	Azimuth [°]	TVD [ft]	Vert Sect [ft]	North [ft]	East [ft]	Latitude	Longitude	DLS [°/100ft]	Comments
7465.00	89.880	180.290	6658.49	238.54	-197.20	638.10	40°15'37.0764"N	104°30'1.5545"W	0.23	
7560.00	90.250	180.010	6658.38	333.32	-292.20	637.85	40°15'36.1377"N	104°30'1.5715"W	0.49	
7654.00	90.860	180.110	6657.47	427.11	-386.20	637.75	40°15'35.2089"N	104°30'1.5864"W	0.66	
7749.00	90.090	179.820	6656.68	521.91	-481.19	637.81	40°15'34.2703"N	104°30'1.5995"W	0.87	
7843.00	90.080	180.580	6656.54	615.68	-575.19	637.48	40°15'33.3415"N	104°30'1.6174"W	0.81	
7937.00	90.140	180.380	6656.36	709.43	-669.19	636.69	40°15'32.4128"N	104°30'1.6412"W	0.22	
8032.00	90.660	180.550	6655.70	804.17	-764.18	635.92	40°15'31.4742"N	104°30'1.6650"W	0.58	
8126.00	90.630	180.290	6654.64	897.91	-858.17	635.23	40°15'30.5455"N	104°30'1.6875"W	0.28	
8221.00	89.920	180.060	6654.19	992.69	-953.17	634.94	40°15'29.6068"N	104°30'1.7051"W	0.79	
8315.00	89.950	180.540	6654.29	1086.45	-1047.17	634.45	40°15'28.6781"N	104°30'1.7251"W	0.51	
8410.00	89.460	180.180	6654.78	1181.20	-1142.16	633.85	40°15'27.7395"N	104°30'1.7466"W	0.64	



Actual Wellpath Report

Guttersen D12-755 AWP
Page 4 of 7



REFERENCE WELLPATH IDENTIFICATION

Operator	NOBLE ENERGY, INC	Well	Guttersen D12-755
Field	WELD COUNTY (NOBLE NAD 83 GRID)	API	05-123-49077
Facility	SEC.01-T03N-R64W	Wellbore	Guttersen D12-755 AWB
Slot	SLOT#05 Guttersen D12-755 (316'FNL & 1707'FWL,SEC.01)		

WELLPATH DATA (174 stations)

MD [ft]	Inclination [°]	Azimuth [°]	TVD [ft]	Vert Sect [ft]	North [ft]	East [ft]	Latitude	Longitude	DLS [°/100ft]	Comments
8504.00	89.860	180.440	6655.34	1274.97	-1236.16	633.35	40°15'26.8107"N	104°30'1.7668"W	0.51	
8599.00	89.710	180.640	6655.70	1369.70	-1331.16	632.45	40°15'25.8721"N	104°30'1.7922"W	0.26	
8693.00	89.860	180.140	6656.05	1463.45	-1425.15	631.81	40°15'24.9434"N	104°30'1.8141"W	0.56	
8882.00	89.650	179.270	6656.86	1652.10	-1614.15	632.78	40°15'23.0758"N	104°30'1.8290"W	0.47	
8977.00	89.340	179.160	6657.69	1746.97	-1709.13	634.08	40°15'22.1371"N	104°30'1.8260"W	0.35	
9071.00	90.510	180.720	6657.82	1840.77	-1803.13	634.18	40°15'21.2083"N	104°30'1.8384"W	2.07	
9166.00	90.390	180.400	6657.07	1935.50	-1898.12	633.25	40°15'20.2697"N	104°30'1.8642"W	0.36	
9260.00	89.890	180.090	6656.84	2029.27	-1992.12	632.85	40°15'19.3409"N	104°30'1.8831"W	0.63	
9355.00	90.200	180.220	6656.77	2124.05	-2087.12	632.60	40°15'18.4023"N	104°30'1.9002"W	0.35	
9449.00	90.200	179.910	6656.44	2217.84	-2181.12	632.49	40°15'17.4734"N	104°30'1.9152"W	0.33	
9544.00	89.890	180.070	6656.36	2312.64	-2276.12	632.51	40°15'16.5347"N	104°30'1.9288"W	0.37	
9638.00	89.890	180.060	6656.54	2406.43	-2370.12	632.40	40°15'15.6059"N	104°30'1.9439"W	0.01	
9733.00	89.860	180.520	6656.75	2501.19	-2465.12	631.92	40°15'14.6672"N	104°30'1.9639"W	0.49	
9827.00	90.080	180.460	6656.80	2594.93	-2559.11	631.11	40°15'13.7385"N	104°30'1.9879"W	0.24	
9922.00	90.020	180.350	6656.72	2689.68	-2654.11	630.44	40°15'12.7999"N	104°30'2.0104"W	0.13	
10016.00	89.860	180.390	6656.82	2783.44	-2748.11	629.84	40°15'11.8712"N	104°30'2.0319"W	0.18	
10111.00	90.390	180.720	6656.61	2878.17	-2843.10	628.92	40°15'10.9326"N	104°30'2.0575"W	0.66	
10205.00	90.110	180.760	6656.20	2971.88	-2937.10	627.70	40°15'10.0040"N	104°30'2.0869"W	0.30	
10299.00	90.540	179.340	6655.67	3065.67	-3031.09	627.62	40°15'9.0752"N	104°30'2.1016"W	1.58	
10394.00	90.320	179.440	6654.95	3160.53	-3126.08	628.63	40°15'8.1364"N	104°30'2.1024"W	0.25	
10489.00	90.290	179.380	6654.45	3255.38	-3221.08	629.61	40°15'7.1977"N	104°30'2.1035"W	0.07	
10583.00	90.110	179.390	6654.12	3349.24	-3315.07	630.62	40°15'6.2688"N	104°30'2.1042"W	0.19	
10677.00	90.510	179.640	6653.61	3443.08	-3409.07	631.41	40°15'5.3399"N	104°30'2.1076"W	0.50	
10772.00	90.420	179.750	6652.84	3537.91	-3504.06	631.92	40°15'4.4012"N	104°30'2.1149"W	0.15	
10866.00	90.290	179.520	6652.26	3631.74	-3598.06	632.52	40°15'3.4723"N	104°30'2.1208"W	0.28	
10961.00	90.290	180.140	6651.78	3726.55	-3693.06	632.80	40°15'2.5336"N	104°30'2.1310"W	0.65	
11056.00	90.320	178.760	6651.27	3821.40	-3788.05	633.71	40°15'1.5948"N	104°30'2.1330"W	1.45	
11150.00	90.020	178.600	6650.99	3915.32	-3882.02	635.88	40°15'0.6660"N	104°30'2.1188"W	0.36	
11245.00	90.230	178.090	6650.78	4010.25	-3976.98	638.62	40°14'59.7274"N	104°30'2.0972"W	0.58	
11339.00	89.650	178.370	6650.88	4104.20	-4070.94	641.52	40°14'58.7987"N	104°30'2.0734"W	0.69	
11434.00	89.460	178.590	6651.62	4199.12	-4165.90	644.04	40°14'57.8600"N	104°30'2.0547"W	0.31	
11529.00	90.420	178.890	6651.72	4294.03	-4260.88	646.13	40°14'56.9213"N	104°30'2.0416"W	1.06	
11623.00	90.630	178.280	6650.86	4387.95	-4354.84	648.45	40°14'55.9925"N	104°30'2.0253"W	0.69	
11718.00	90.750	178.510	6649.71	4482.87	-4449.80	651.11	40°14'55.0539"N	104°30'2.0048"W	0.27	

WELLPATH DATA (174 stations)

MD [ft]	Inclination [°]	Azimuth [°]	TVD [ft]	Vert Sect [ft]	North [ft]	East [ft]	Latitude	Longitude	DLS [°/100ft]	Comments
11813.00	90.350	178.690	6648.80	4577.79	-4544.77	653.44	40°14'54.1153"N	104°30'1.9887"W	0.46	
11907.00	90.480	178.640	6648.12	4671.70	-4638.74	655.63	40°14'53.1865"N	104°30'1.9741"W	0.15	
12001.00	90.350	179.410	6647.44	4765.59	-4732.72	657.23	40°14'52.2576"N	104°30'1.9671"W	0.83	
12096.00	90.720	179.210	6646.55	4860.45	-4827.71	658.37	40°14'51.3189"N	104°30'1.9662"W	0.44	
12190.00	90.350	179.100	6645.68	4954.32	-4921.69	659.76	40°14'50.3901"N	104°30'1.9620"W	0.41	
12285.00	90.380	178.740	6645.07	5049.22	-5016.68	661.55	40°14'49.4513"N	104°30'1.9527"W	0.38	
12379.00	90.380	179.510	6644.45	5143.10	-5110.66	662.98	40°14'48.5225"N	104°30'1.9478"W	0.82	
12474.00	90.420	179.370	6643.78	5237.95	-5205.65	663.91	40°14'47.5837"N	104°30'1.9497"W	0.15	
12568.00	89.710	179.510	6643.68	5331.80	-5299.65	664.83	40°14'46.6548"N	104°30'1.9515"W	0.77	
12663.00	89.860	179.150	6644.03	5426.66	-5394.64	665.94	40°14'45.7160"N	104°30'1.9510"W	0.41	
12757.00	89.980	178.940	6644.17	5520.55	-5488.63	667.51	40°14'44.7872"N	104°30'1.9444"W	0.26	

Actual Wellpath Report

Guttersen D12-755 AWP
Page 5 of 7

REFERENCE WELLPATH IDENTIFICATION

Operator	NOBLE ENERGY, INC	Well	Guttersen D12-755
Field	WELD COUNTY (NOBLE NAD 83 GRID)	API	05-123-49077
Facility	SEC.01-T03N-R64W	Wellbore	Guttersen D12-755 AWB
Slot	SLOT#05 Guttersen D12-755 (316'FNL & 1707'FWL,SEC.01)		

WELLPATH DATA (174 stations) † = interpolated, ‡ = extrapolated station

MD [ft]	Inclination [°]	Azimuth [°]	TVD [ft]	Vert Sect [ft]	North [ft]	East [ft]	Latitude	Longitude	DLS [°/100ft]	Comments
12851.00	89.740	178.850	6644.40	5614.45	-5582.61	669.32	40°14'43.8583"N	104°30'1.9347"W	0.27	
12946.00	89.770	179.220	6644.80	5709.34	-5677.60	670.92	40°14'42.9195"N	104°30'1.9279"W	0.39	
13040.00	89.860	180.640	6645.11	5803.14	-5771.59	671.03	40°14'41.9907"N	104°30'1.9401"W	1.51	
13135.00	89.890	180.580	6645.31	5897.86	-5866.59	670.02	40°14'41.0522"N	104°30'1.9669"W	0.07	
13229.00	89.950	180.380	6645.44	5991.61	-5960.58	669.23	40°14'40.1234"N	104°30'1.9907"W	0.22	
13324.00	90.200	180.240	6645.32	6086.37	-6055.58	668.72	40°14'39.1848"N	104°30'2.0112"W	0.30	
13418.00	89.860	180.110	6645.27	6180.15	-6149.58	668.43	40°14'38.2560"N	104°30'2.0285"W	0.39	
13513.00	89.860	180.350	6645.50	6274.92	-6244.58	668.05	40°14'37.3173"N	104°30'2.0473"W	0.25	
13608.00	89.860	179.930	6645.73	6369.70	-6339.58	667.82	40°14'36.3786"N	104°30'2.0641"W	0.44	
13702.00	90.020	179.420	6645.83	6463.53	-6433.58	668.35	40°14'35.4497"N	104°30'2.0708"W	0.57	
13796.00	89.620	179.330	6646.13	6557.39	-6527.57	669.38	40°14'34.5209"N	104°30'2.0713"W	0.44	
13891.00	90.020	180.190	6646.43	6652.21	-6622.57	669.78	40°14'33.5821"N	104°30'2.0800"W	1.00	
13986.00	89.620	179.700	6646.72	6747.01	-6717.57	669.87	40°14'32.6434"N	104°30'2.0926"W	0.67	
14080.00	89.860	179.330	6647.15	6840.86	-6811.56	670.66	40°14'31.7145"N	104°30'2.0960"W	0.47	
14174.00	89.890	179.920	6647.36	6934.69	-6905.56	671.28	40°14'30.7856"N	104°30'2.1017"W	0.63	
14269.00	89.860	179.940	6647.56	7029.49	-7000.56	671.39	40°14'29.8469"N	104°30'2.1140"W	0.04	
14364.00	89.920	179.640	6647.75	7124.31	-7095.56	671.74	40°14'28.9081"N	104°30'2.1233"W	0.32	
14458.00	89.830	180.580	6647.95	7218.10	-7189.56	671.56	40°14'27.9793"N	104°30'2.1393"W	1.00	
14553.00	90.200	180.600	6647.93	7312.83	-7284.55	670.58	40°14'27.0408"N	104°30'2.1657"W	0.39	
14647.00	90.630	180.680	6647.25	7406.55	-7378.55	669.53	40°14'26.1121"N	104°30'2.1929"W	0.47	
14741.00	90.080	180.760	6646.66	7500.26	-7472.54	668.35	40°14'25.1835"N	104°30'2.2218"W	0.59	
14930.00	89.660	180.080	6647.09	7688.75	-7661.53	666.97	40°14'23.3162"N	104°30'2.2672"W	0.42	
15025.00	89.880	179.850	6647.47	7783.55	-7756.53	667.03	40°14'22.3775"N	104°30'2.2802"W	0.34	
15120.00	90.650	180.130	6647.03	7878.35	-7851.53	667.04	40°14'21.4388"N	104°30'2.2938"W	0.86	
15309.00	90.680	179.740	6644.84	8066.95	-8040.51	667.26	40°14'19.5713"N	104°30'2.3185"W	0.21	
15404.00	90.550	179.950	6643.82	8161.75	-8135.51	667.51	40°14'18.6326"N	104°30'2.3290"W	0.26	
15498.00	90.400	180.000	6643.04	8255.55	-8229.50	667.55	40°14'17.7038"N	104°30'2.3421"W	0.17	
15592.00	90.370	180.240	6642.41	8349.33	-8323.50	667.36	40°14'16.7750"N	104°30'2.3583"W	0.26	
15687.00	90.650	180.250	6641.56	8444.10	-8418.50	666.95	40°14'15.8364"N	104°30'2.3774"W	0.29	
15876.00	90.490	178.540	6639.68	8632.80	-8607.47	668.95	40°14'13.9689"N	104°30'2.3791"W	0.91	
15970.00	90.370	177.750	6638.98	8726.74	-8701.42	671.99	40°14'13.0402"N	104°30'2.3535"W	0.85	
16159.00	90.280	180.170	6637.91	8915.51	-8890.37	675.42	40°14'11.1727"N	104°30'2.3368"W	1.28	
16254.00	89.660	179.050	6637.96	9010.35	-8985.36	676.07	40°14'10.2340"N	104°30'2.3422"W	1.35	
16443.00	89.230	180.010	6639.79	9199.03	-9174.35	677.62	40°14'8.3664"N	104°30'2.3497"W	0.56	

WELLPATH DATA (174 stations) † = interpolated, ‡ = extrapolated station										
MD [ft]	Inclination [°]	Azimuth [°]	TVD [ft]	Vert Sect [ft]	North [ft]	East [ft]	Latitude	Longitude	DLS [°/100ft]	Comments
16538.00	89.480	179.920	6640.86	9293.82	-9269.34	677.68	40°14'7.4277"N	104°30'2.3628"W	0.28	
16632.00	89.380	179.480	6641.79	9387.64	-9363.33	678.17	40°14'6.4989"N	104°30'2.3701"W	0.48	
16727.00	89.350	179.910	6642.84	9482.47	-9458.33	678.67	40°14'5.5602"N	104°30'2.3773"W	0.45	
16916.00	89.600	179.960	6644.58	9671.07	-9647.32	678.89	40°14'3.6927"N	104°30'2.4020"W	0.13	Last BH MWD Survey
17374.00‡	89.600	179.960	6647.77	10128.09	-10105.31	679.21	40°13'59.1671"N	104°30'2.4645"W	0.00	Projection to Bit

HOLE & CASING SECTIONS - Ref Wellbore: Guttersen D12-755 AWB Ref Wellpath: Guttersen D12-755 AWP									
String/Diameter	Start MD [ft]	End MD [ft]	Interval [ft]	Start TVD [ft]	End TVD [ft]	Start N/S [ft]	Start E/W [ft]	End N/S [ft]	End E/W [ft]
9.625in Casing Surface	0.00	1940.00	1940.00	0.00	1939.97	0.00	0.00	3.40	-0.31



Actual Wellpath Report

Guttersen D12-755 AWP
Page 6 of 7



REFERENCE WELLPATH IDENTIFICATION

Operator	NOBLE ENERGY, INC	Well	Guttersen D12-755
Field	WELD COUNTY (NOBLE NAD 83 GRID)	API	05-123-49077
Facility	SEC.01-T03N-R64W	Wellbore	Guttersen D12-755 AWB
Slot	SLOT#05 Guttersen D12-755 (316'FNL & 1707'FWL,SEC.01)		

TARGETS

Name	TVD [ft]	North [ft]	East [ft]	Grid East [US ft]	Grid North [US ft]	Latitude	Longitude	Shape
GUTTERSEN D12-785 SECTION 1	0.00	-1.00	-89.30	3278230.49	1339436.93	40°15'39.0960"N	104°30'10.9080"W	polygon
2D Polygon: dimensions not calculated								
GUTTERSEN D12-785 SECTION 12	0.00	-1.00	-89.30	3278230.49	1339436.93	40°15'39.0960"N	104°30'10.9080"W	polygon
2D Polygon: dimensions not calculated								
Guttersen D12-755 BHL PLAN (200'FSL & 2304'FWL,SEC.12)	6645.00	-10105.82	662.88	3278982.64	1329332.57	40°13'59.1639"N	104°30'2.6750"W	point
Guttersen D12-755 VS 4050	6645.00	-4016.92	645.41	3278965.17	1335421.20	40°14'59.3320"N	104°30'2.0155"W	point
Guttersen D12-755 LP PLAN/ LP (200'FNL & 2341'FWL,SEC.01)	6655.00	122.19	633.49	3278953.25	1339560.12	40°15'40.2329"N	104°30'1.5675"W	point
Guttersen D12-755 VS 2450	6655.00	-2413.71	640.80	3278960.56	1337024.33	40°15'15.1742"N	104°30'1.8419"W	point

WELLPATH COMPOSITION - Ref Wellbore: Guttersen D12-755 AWB Ref Wellpath: Guttersen D12-755 AWP

Start MD [ft]	End MD [ft]	Positional Uncertainty Model	Log Name/Comment	Wellbore	Survey Date
0.00	1927.00	Gyrodatta 2015 - GC+DROP+COND	Gyrodatta Surface Gyros <80'-1927'>	Guttersen D12-755 AWB	4/21/2022
1927.00	17374.00	OWSG MWD rev2 (MS+IFR1)	8.5" AT-Curve Pro - OWSG MWD rev2 (MS+IFR1) <1983'-16916'>	Guttersen D12-755 AWB	6/2/2022



Actual Wellpath Report

Guttersen D12-755 AWP

Page 7 of 7



REFERENCE WELLPATH IDENTIFICATION

Operator	NOBLE ENERGY, INC	Well	Guttersen D12-755
Field	WELD COUNTY (NOBLE NAD 83 GRID)	API	05-123-49077
Facility	SEC.01-T03N-R64W	Wellbore	Guttersen D12-755 AWB
Slot	SLOT#05 Guttersen D12-755 (316'FNL & 1707'FWL,SEC.01)		

WELLPATH COMMENTS

MD [ft]	Inclination [°]	Azimuth [°]	TVD [ft]	Comment
1927.00	0.490	339.080	1926.97	Tie to Surface Gyro
1983.00	0.420	302.010	1982.97	1st BH MWD Survey
16916.00	89.600	179.960	6644.58	Last BH MWD Survey
17374.00	89.600	179.960	6647.77	Projection to Bit