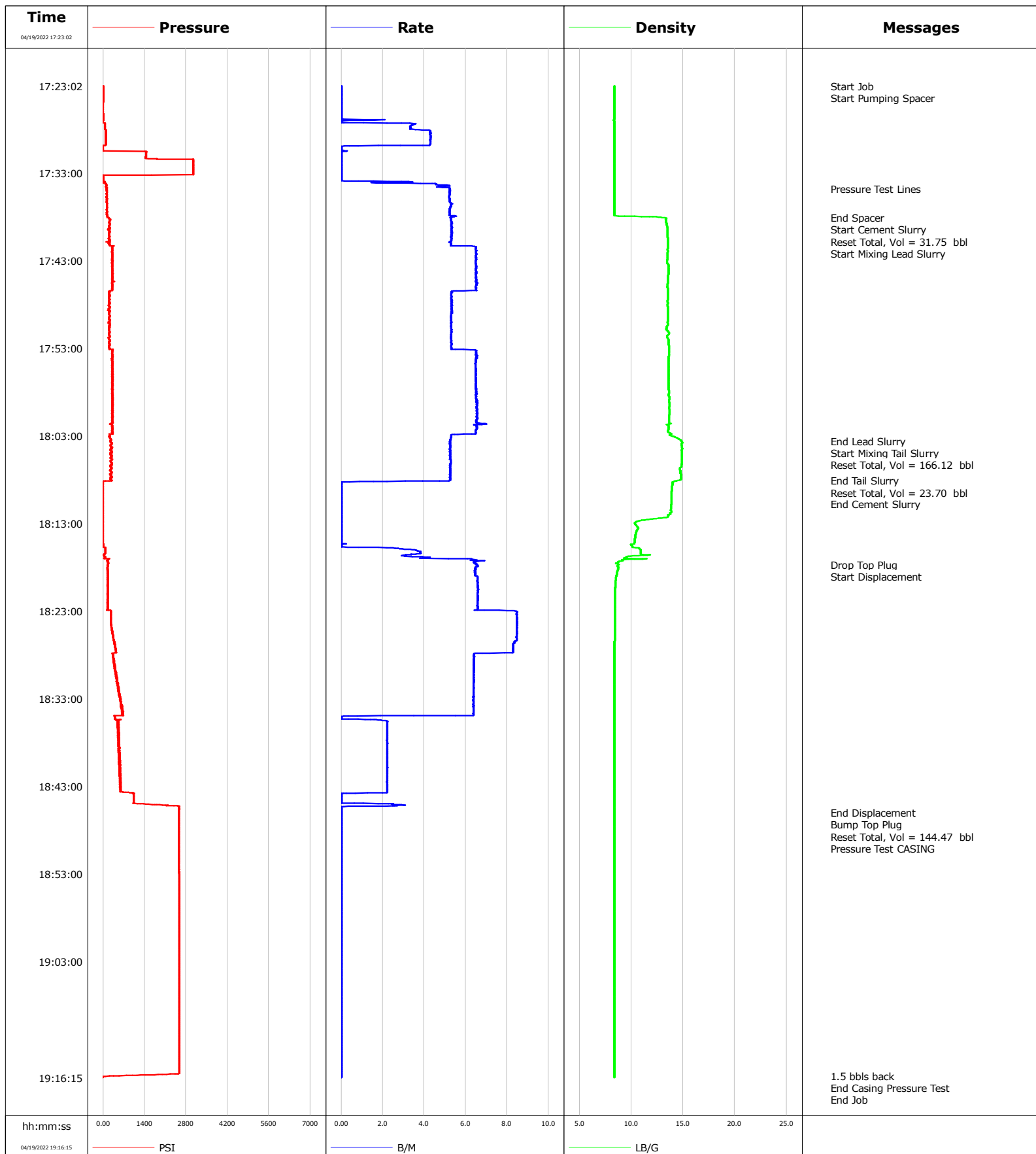


<b>Well</b>	GUTTERSEN D-12 765	<b>Client</b>	CHEVRON
<b>Field</b>	DJ	<b>SIR No.</b>	57122
<b>Engineer</b>	NORM HASLAUER	<b>Job Type</b>	SURFACE
<b>Country</b>	United States	<b>Job Date</b>	04-19-2022



# Cementing Service Report

				Customer CHEVRON				Job Number 57122							
Well GUTTERSEN D-12 765			Location (legal)			Schlumberger Location			Job Start Apr/19/2022						
Field DJ		Formation Name/Type			Deviation deg		Bit Size in		Well MD 1950.0 ft		Well TVD 1950.0 ft				
County WELD		State/Province Colorado			BHP psi		BHST 122 degF		BHCT 97 degF		Pore Press. Gradient lb/gal				
Well Master 0064714731		API/UWI 05-123-49073-00-00													
Rig Name HP 517		Drilled For Oil & Gas		Service Via Land		Casing/ Liner									
						Depth, ft		Size, in		Weight, lb/ft		Grade	Thread		
Offshore Zone		Well Class New		Well Type Development		110.0		16.0		36.94		A-52A			
						1939.0		9.6		36.0		J-55			
Drilling Fluid Type		Max. Density lb/gal		Plastic Viscosity cP		Tubing/Drill Pipe									
						T/D		Depth, ft		Size, in		Weight, lb/ft		Grade	Thread
Service Line Cementing		Job Type SURFACE													
Max. Allowed Tub. Press psi		Max. Allowed Ann. Press psi		WH Connection Single Cement head		Perforations/Open Hole									
						Top, ft		Bottom, ft		shot/ft		No. of Shots		Total Interval	
						ft		ft						ft	
						ft		ft						Diameter	
						ft		ft						in	
						Treat Down Casing		Displacement 144.0 bbl		Packer Type		Packer Depth ft			
						Tubing Vol. bbl		Casing Vol. bbl		Annular Vol. bbl		Openhole Vol. bbl			
Casing/Tubing Secured <input checked="" type="checkbox"/>		1 Hole Vol. Circulated prior to Cement <input checked="" type="checkbox"/>				Casing Tools				Squeeze Job					
Lift Pressure psi						Shoe Type				Squeeze Type					
Pipe Rotated <input type="checkbox"/>		Pipe Reciprocated <input type="checkbox"/>				Shoe Depth ft				Tool Type					
No. Centralizers		Top Plugs		Bottom Plugs		Stage Tool Type				Tool Depth ft					
Cement Head Type						Stage Tool Depth ft				Tail Pipe Size in					
Job Scheduled For Apr/19/2022		Arrived on Location Apr/19/2022		Leave Location Apr/19/2022		Collar Type				Tail Pipe Depth ft					
						Collar Depth ft				Sqz. Total Vol. bbl					
Date	Time 24-hr clock	Treating Pressure PSI	Flow Rate B/M	Density LB/G	Volume BBL	Message									
04/19/2022	17:23:02	1	0.0	8.36	0.0	Started Acquisition									
04/19/2022	17:23:04	1	0.0	8.37	0.0	Start Pumping Spacer									
04/19/2022	17:24:41	1	0.0	8.36	0.0										
04/19/2022	17:26:20	0	0.0	8.36	0.0										
04/19/2022	17:27:59	62	3.4	8.36	2.6										
04/19/2022	17:29:38	94	4.3	8.37	9.6										
04/19/2022	17:31:17	1441	0.0	8.37	10.6										
04/19/2022	17:32:56	3037	0.0	8.37	10.6										
04/19/2022	17:34:35	92	4.6	8.37	13.2										
04/19/2022	17:34:50	120	5.2	8.37	14.5	Pressure Test Lines									
04/19/2022	17:36:14	119	5.2	8.38	21.8										
04/19/2022	17:37:53	136	5.5	8.47	30.5										
04/19/2022	17:38:04	146	5.3	12.96	31.5	End Spacer									
04/19/2022	17:38:06	200	5.3	13.21	31.7	Start Cement Slurry									
04/19/2022	17:38:07	192	5.3	13.30	31.7	Reset Total, Vol = 31.75 bbl									
04/19/2022	17:38:09	184	5.3	13.39	0.2	Start Mixing Lead Slurry									
04/19/2022	17:39:32	205	5.3	13.50	7.5										
04/19/2022	17:41:11	215	5.3	13.54	16.3										
04/19/2022	17:42:50	312	6.5	13.48	26.8										
04/19/2022	17:44:29	323	6.5	13.57	37.6										
04/19/2022	17:46:08	315	6.5	13.52	48.3										

Well			Field		Job Start	Customer	Job Number
GUTTERSEN D-12 765			DJ		Apr/19/2022	CHEVRON	57122
Date	Time 24-hr clock	Treating Pressure PSI	Flow Rate B/M	Density LB/G	Volume BBL	Message	
04/19/2022	17:49:26	208	5.3	13.53	66.2		
04/19/2022	17:51:05	222	5.3	13.56	75.0		
04/19/2022	17:52:44	217	5.3	13.62	83.7		
04/19/2022	17:54:23	299	6.5	13.58	94.0		
04/19/2022	17:56:02	328	6.5	13.58	104.7		
04/19/2022	17:57:41	323	6.5	13.61	115.4		
04/19/2022	17:59:20	320	6.6	13.67	126.1		
04/19/2022	18:00:59	319	6.5	13.64	136.9		
04/19/2022	18:02:38	330	6.5	13.67	147.7		
04/19/2022	18:03:34	249	5.2	14.82	152.9	End Lead Slurry	
04/19/2022	18:03:35	253	5.2	14.83	152.9	Start Mixing Tail Slurry	
04/19/2022	18:03:37	261	5.2	14.86	153.1	Reset Total, Vol = 166.12 bbl	
04/19/2022	18:04:17	289	5.2	14.89	3.5		
04/19/2022	18:05:56	258	5.3	14.88	12.2		
04/19/2022	18:08:06	303	5.2	14.48	23.5	End Tail Slurry	
04/19/2022	18:08:08	216	4.7	14.34	23.7	Reset Total, Vol = 23.70 bbl	
04/19/2022	18:08:09	94	3.9	14.27	0.1	End Cement Slurry	
04/19/2022	18:09:14	-7	0.0	13.91	0.2		
04/19/2022	18:10:53	-6	0.0	13.85	0.2		
04/19/2022	18:12:32	-6	0.0	11.69	0.2		
04/19/2022	18:14:11	-6	0.0	10.42	0.2		
04/19/2022	18:15:50	73	2.7	10.75	0.5		
04/19/2022	18:17:29	162	6.4	8.70	7.8		
04/19/2022	18:17:40	154	6.5	8.83	9.0	Drop Top Plug	
04/19/2022	18:17:41	163	6.5	8.82	9.1	Start Displacement	
04/19/2022	18:19:08	162	6.6	8.53	18.5		
04/19/2022	18:20:47	162	6.6	8.43	29.4		
04/19/2022	18:22:26	156	6.6	8.41	40.2		
04/19/2022	18:24:05	266	8.5	8.41	53.3		
04/19/2022	18:25:44	329	8.5	8.41	67.2		
04/19/2022	18:27:23	424	8.3	8.38	81.0		
04/19/2022	18:29:02	370	6.4	8.38	92.4		
04/19/2022	18:30:41	477	6.4	8.38	102.9		
04/19/2022	18:32:20	539	6.4	8.38	113.4		
04/19/2022	18:33:59	651	6.4	8.38	123.9		
04/19/2022	18:35:38	536	2.2	8.38	130.6		
04/19/2022	18:37:17	504	2.2	8.38	134.3		
04/19/2022	18:40:35	552	2.2	8.38	141.6		
04/19/2022	18:42:14	585	2.2	8.38	145.3		
04/19/2022	18:43:53	1030	0.0	8.38	148.6		
04/19/2022	18:45:32	2565	0.0	8.38	149.5		
04/19/2022	18:46:00	2561	0.0	8.38	149.5	End Displacement	
04/19/2022	18:46:01	2561	0.0	8.38	149.5	Bump Top Plug	
04/19/2022	18:46:03	2557	0.0	8.38	149.5	Reset Total, Vol = 144.47 bbl	
04/19/2022	18:46:04	2558	0.0	8.38	149.5	Pressure Test CASING	
04/19/2022	18:47:11	2558	0.0	8.38	0.0		
04/19/2022	18:48:50	2560	0.0	8.38	0.0		
04/19/2022	18:50:29	2560	0.0	8.38	0.0		
04/19/2022	18:52:08	2562	0.0	8.38	0.0		
04/19/2022	18:53:47	2563	0.0	8.38	0.0		
04/19/2022	18:55:26	2565	0.0	8.38	0.0		
04/19/2022	18:57:05	2566	0.0	8.38	0.0		
04/19/2022	18:58:44	2567	0.0	8.39	0.0		
04/19/2022	19:00:23	2567	0.0	8.38	0.0		

Well			Field		Job Start	Customer		Job Number	
GUTTERSEN D-12 765			DJ		Apr/19/2022	CHEVRON		57122	
Date	Time 24-hr clock	Treating Pressure PSI	Flow Rate B/M	Density LB/G	Volume BBL	Message			
04/19/2022	19:03:41	2570	0.0	8.38	0.0				
04/19/2022	19:05:20	2571	0.0	8.38	0.0				
04/19/2022	19:06:59	2571	0.0	8.38	0.0				
04/19/2022	19:08:38	2572	0.0	8.38	0.0				
04/19/2022	19:10:17	2572	0.0	8.38	0.0				
04/19/2022	19:11:56	2573	0.0	8.38	0.0				
04/19/2022	19:13:35	2574	0.0	8.38	0.0				
04/19/2022	19:15:14	2573	0.0	8.38	0.0				
04/19/2022	19:16:04	231	0.0	8.38	0.0	1.5 bbls back			
04/19/2022	19:16:05	94	0.0	8.38	0.0	End Casing Pressure Test			

## Post Job Summary

Average Pump Rates, bbl/min					Volume of Fluid Injected, bbl			
Slurry	N2	Mud	Maximum Rate		Total Slurry	Mud	Spacer	N2
5.4			8.5		192.0	0.0	30.0	
Treating Pressure Summary, psi					Breakdown Fluid			
Maximum	Final	Average	Bump Plug to	Breakdown	Type	Volume	Density	
3052	-4	1039				bbl	lb/gal	
Avg. N2 Percent	Designed Slurry Volume	Displacement	Mix Water Temp	Cement Circulated to Surface?	Volume			
%	192.0 bbl	144.0 bbl	62 degF	<input checked="" type="checkbox"/>	20.0 bbl			
Customer or Authorized Representative			Schlumberger Supervisor			Washed Thru Perfs	To	
						<input type="checkbox"/>	ft	
JIM TURNER			NORM HASLAUER			Circulation Lost	Job Completed	
						<input type="checkbox"/>	<input checked="" type="checkbox"/>	
						-	-	