

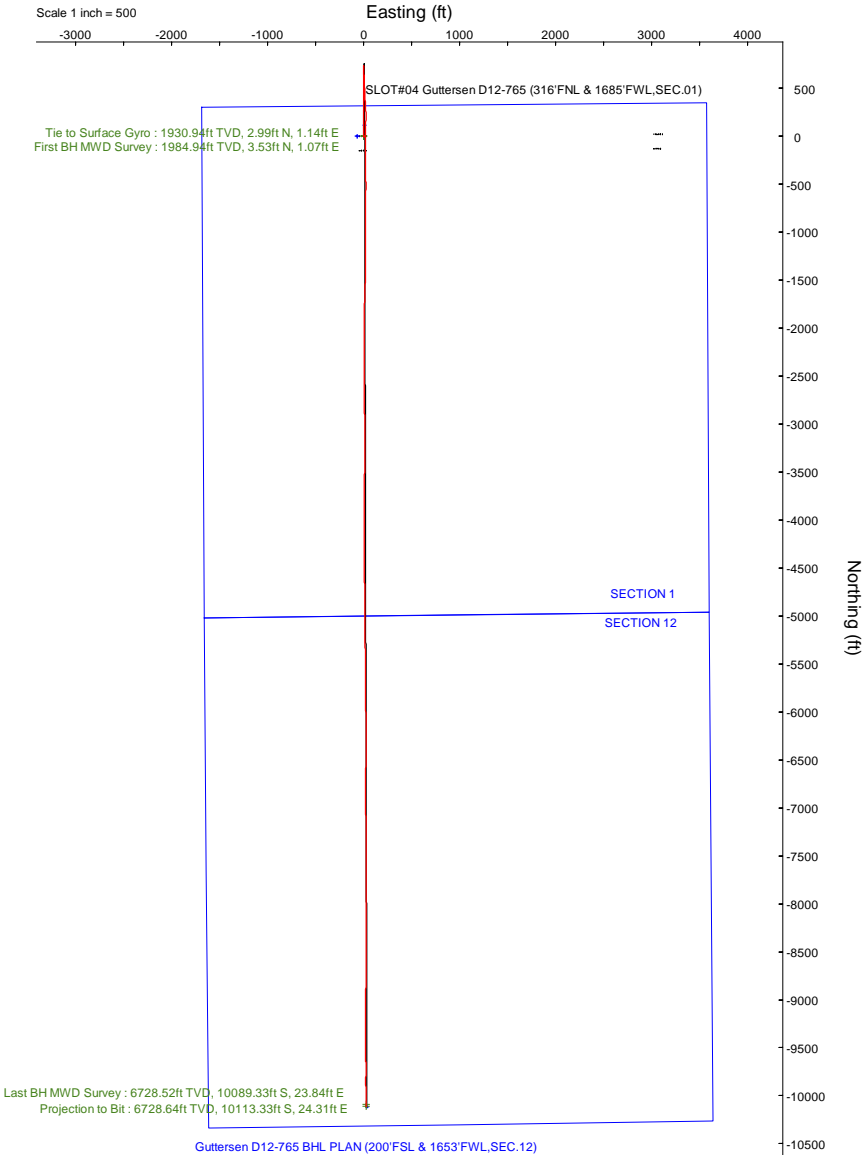
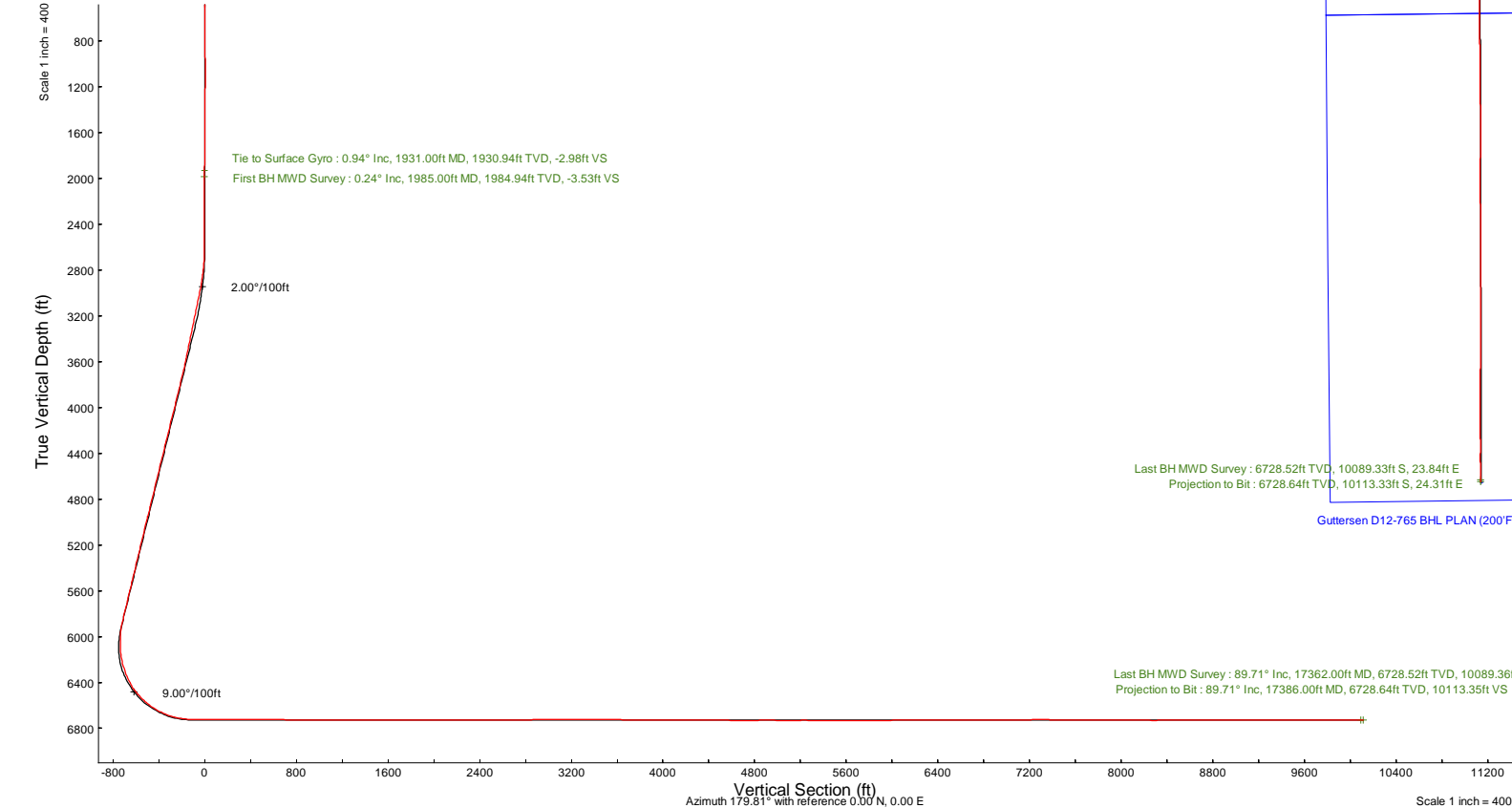
NOBLE ENERGY, INC



Location:	COLORADO	Slot:	SLOT#04 Guttersen D12-765 (316'FNL & 1685'FWL,SEC.01)
Field:	WELD COUNTY (NOBLE NAD 83 GRID)	Well:	Guttersen D12-765
Facility:	SEC.01-T03N-R64W	Wellbore:	Guttersen D12-765 PWB

Plot reference wellpath is Guttersen D12-765 (REV-A.0) PWP	Grid System: NAD83 / Lambert Colorado SP, Northern Zone (501), US feet
True vertical depths are referenced to (4745'GL+30'KB@4775'RKB) (RKB)	North Reference: Grid north
Reference wellpath measured depths are referenced to (4745'GL+30'KB@4775'RKB) (RKB)	Scale: True distance
(4745'GL+30'KB@4775'RKB) (RKB) to Mean Sea Level: 4775 feet	Coordinates are in feet referenced to Slot
Mean Sea Level to Ground level (At Slot: SLOT#04 Guttersen D12-765 (316'FNL & 1685'FWL,SEC.01)): 0 feet	Depths are in feet
Offset wellpath MDs are referenced to each path's default MD datum	Created by: guenaler on 2022-06-02; Database: WA_Denver

Location Information					
Facility Name			Grid East (US ft)	Grid North (US ft)	Latitude
SEC.01-T03N-R64W			3278229.920	1339437.650	40°15'39.1032"N
Slot			Grid East (US ft)	Grid North (US ft)	Latitude
SLOT#04 Guttersen D12-765 (316'FNL & 1685'FWL,SEC.01)			3278297.463	1339437.684	40°15'39.0960"N
(4745'GL+30'KB@4775'RKB) (RKB) to Ground level (At Slot: SLOT#04 Guttersen D12-765 (316'FNL & 1685'FWL,SEC.01))			4775ft		
Mean Sea Level to Ground level (At Slot: SLOT#04 Guttersen D12-765 (316'FNL & 1685'FWL,SEC.01))			0ft		
(4745'GL+30'KB@4775'RKB) (RKB) to Mean Sea Level			4775ft		





Actual Wellpath Report

Guttersen D12-765 AWP

Page 1 of 7



REFERENCE WELLPATH IDENTIFICATION

Operator	NOBLE ENERGY, INC	Well	Guttersen D12-765
Field	WELD COUNTY (NOBLE NAD 83 GRID)	API	05-123-49073
Facility	SEC.01-T03N-R64W	Wellbore	Guttersen D12-765 AWB
Slot	SLOT#04 Guttersen D12-765 (316'FNL & 1685'FWL,SEC.01)		

REPORT SETUP INFORMATION

Projection System	NAD83 / Lambert Colorado SP, Northern Zone (501), US feet	Software System	WellArchitect® 6.0
North Reference	Grid	User	Guenaler
Scale	0.999957	Report Generated	6/2/2022 at 3:54:57 PM
Convergence at slot	0.64° East	Database	WA_Denver

WELLPATH LOCATION

	Local coordinates		Grid coordinates		Geographic coordinates	
	North[ft]	East[ft]	Easting[US ft]	Northing[US ft]	Latitude	Longitude
Slot Location	0.03	67.55	3278297.46	1339437.68	40°15'39.0960"N	104°30'10.0440"W
Facility Reference Pt			3278229.92	1339437.65	40°15'39.1032"N	104°30'10.9152"W
Field Reference Pt			3000000.00	4454105.15	48°46'34.3150"N	105°30'0.0000"W

WELLPATH DATUM

Calculation method	Minimum curvature	(4745'GL+30'KB@4775'RKB) (RKB) to Facility Vertical Datum	4775.00ft
Horizontal Reference Pt	Slot	(4745'GL+30'KB@4775'RKB) (RKB) to Mean Sea Level	4775.00ft
Vertical Reference Pt	(4745'GL+30'KB@4775'RKB) (RKB)	(4745'GL+30'KB@4775'RKB) (RKB) to Ground Level at Slot (SLOT#04 Guttersen D12-765 (316'FNL & 1685'FWL,SEC.01))	4775.00ft
MD Reference Pt	(4745'GL+30'KB@4775'RKB) (RKB)	Section Origin	N 0.00, E 0.00 ft
Field Vertical Reference	Mean Sea Level	Section Azimuth	179.81°



Actual Wellpath Report

Guttersen D12-765 AWP
Page 2 of 7



REFERENCE WELLPATH IDENTIFICATION

Operator	NOBLE ENERGY, INC	Well	Guttersen D12-765
Field	WELD COUNTY (NOBLE NAD 83 GRID)	API	05-123-49073
Facility	SEC.01-T03N-R64W	Wellbore	Guttersen D12-765 AWB
Slot	SLOT#04 Guttersen D12-765 (316'FNL & 1685'FWL,SEC.01)		

WELLPATH DATA (185 stations)

MD [ft]	Inclination [°]	Azimuth [°]	TVD [ft]	Vert Sect [ft]	North [ft]	East [ft]	Latitude	Longitude	DLS [°/100ft]	Comments
0.00	0.000	130.580	0.00	0.00	0.00	0.00	40°15'39.0960"N	104°30'10.0440"W	0.00	
80.00	0.350	130.580	80.00	0.16	-0.16	0.19	40°15'39.0944"N	104°30'10.0416"W	0.44	
173.00	0.610	132.370	173.00	0.68	-0.68	0.77	40°15'39.0892"N	104°30'10.0342"W	0.28	
263.00	0.460	136.880	262.99	1.27	-1.26	1.37	40°15'39.0834"N	104°30'10.0265"W	0.17	
358.00	0.460	54.490	357.99	1.33	-1.32	1.94	40°15'39.0827"N	104°30'10.0192"W	0.64	
452.00	0.290	194.380	451.99	1.34	-1.33	2.19	40°15'39.0826"N	104°30'10.0160"W	0.75	
547.00	0.250	131.630	546.99	1.71	-1.70	2.28	40°15'39.0789"N	104°30'10.0148"W	0.30	
641.00	0.140	102.000	640.99	1.87	-1.86	2.55	40°15'39.0773"N	104°30'10.0114"W	0.16	
735.00	0.180	160.850	734.99	2.04	-2.03	2.71	40°15'39.0757"N	104°30'10.0094"W	0.17	
830.00	0.300	183.590	829.99	2.42	-2.42	2.74	40°15'39.0718"N	104°30'10.0090"W	0.16	
924.00	0.260	159.490	923.99	2.87	-2.86	2.80	40°15'39.0674"N	104°30'10.0083"W	0.13	
1018.00	0.340	269.350	1017.98	3.07	-3.06	2.60	40°15'39.0654"N	104°30'10.0109"W	0.52	
1113.00	0.500	274.540	1112.98	3.04	-3.03	1.90	40°15'39.0658"N	104°30'10.0199"W	0.17	
1207.00	0.440	278.150	1206.98	2.95	-2.95	1.14	40°15'39.0667"N	104°30'10.0298"W	0.07	
1301.00	0.530	321.550	1300.98	2.56	-2.56	0.51	40°15'39.0707"N	104°30'10.0378"W	0.39	
1396.00	0.360	348.030	1395.97	1.92	-1.92	0.17	40°15'39.0770"N	104°30'10.0420"W	0.28	
1490.00	0.310	351.250	1489.97	1.38	-1.38	0.07	40°15'39.0823"N	104°30'10.0433"W	0.06	
1584.00	0.620	341.860	1583.97	0.65	-0.65	-0.12	40°15'39.0896"N	104°30'10.0457"W	0.34	
1679.00	0.640	36.020	1678.96	-0.27	0.27	0.03	40°15'39.0987"N	104°30'10.0436"W	0.60	
1773.00	0.650	49.510	1772.96	-1.04	1.04	0.74	40°15'39.1062"N	104°30'10.0343"W	0.16	
1867.00	0.780	1.420	1866.95	-2.02	2.03	1.16	40°15'39.1159"N	104°30'10.0287"W	0.63	
1931.00	0.940	356.230	1930.94	-2.98	2.99	1.14	40°15'39.1254"N	104°30'10.0289"W	0.28	Tie to Surface Gyro
1985.00	0.240	336.260	1984.94	-3.53	3.53	1.07	40°15'39.1308"N	104°30'10.0297"W	1.33	First BH MWD Survey
2079.00	0.070	162.740	2078.94	-3.65	3.66	1.00	40°15'39.1320"N	104°30'10.0305"W	0.33	
2174.00	0.110	269.990	2173.94	-3.60	3.60	0.93	40°15'39.1315"N	104°30'10.0315"W	0.15	
2268.00	0.130	254.590	2267.94	-3.57	3.57	0.74	40°15'39.1312"N	104°30'10.0340"W	0.04	
2363.00	0.110	252.450	2362.94	-3.51	3.52	0.55	40°15'39.1307"N	104°30'10.0365"W	0.02	
2457.00	0.090	214.170	2456.94	-3.43	3.43	0.42	40°15'39.1298"N	104°30'10.0381"W	0.07	
2552.00	0.280	269.700	2551.94	-3.37	3.37	0.14	40°15'39.1292"N	104°30'10.0417"W	0.25	
2646.00	1.340	2.390	2645.93	-4.46	4.46	-0.04	40°15'39.1401"N	104°30'10.0439"W	1.47	
2741.00	4.150	3.350	2740.81	-9.00	9.00	0.21	40°15'39.1850"N	104°30'10.0400"W	2.96	
2835.00	7.050	3.020	2834.35	-18.16	18.16	0.71	40°15'39.2754"N	104°30'10.0322"W	3.09	
2930.00	10.240	2.130	2928.26	-32.42	32.43	1.33	40°15'39.4163"N	104°30'10.0221"W	3.36	
3024.00	11.340	359.200	3020.60	-50.01	50.02	1.51	40°15'39.5901"N	104°30'10.0172"W	1.31	

WELLPATH DATA (185 stations)

MD [ft]	Inclination [°]	Azimuth [°]	TVD [ft]	Vert Sect [ft]	North [ft]	East [ft]	Latitude	Longitude	DLS [°/100ft]	Comments
3118.00	11.910	358.880	3112.67	-68.95	68.96	1.19	40°15'39.7772"N	104°30'10.0186"W	0.61	
3213.00	11.570	359.750	3205.68	-88.28	88.28	0.96	40°15'39.9683"N	104°30'10.0188"W	0.40	
3307.00	11.490	0.390	3297.79	-107.07	107.07	0.98	40°15'40.1539"N	104°30'10.0158"W	0.16	
3402.00	11.470	359.020	3390.89	-125.97	125.98	0.89	40°15'40.3407"N	104°30'10.0143"W	0.29	
3496.00	11.680	0.320	3482.97	-144.83	144.84	0.78	40°15'40.5271"N	104°30'10.0129"W	0.36	
3590.00	11.440	359.460	3575.07	-163.67	163.67	0.74	40°15'40.7132"N	104°30'10.0106"W	0.31	
3685.00	13.160	0.700	3667.88	-183.91	183.91	0.79	40°15'40.9132"N	104°30'10.0072"W	1.83	
3779.00	13.790	359.100	3759.30	-205.81	205.81	0.74	40°15'41.1296"N	104°30'10.0046"W	0.78	
3874.00	13.680	358.990	3851.58	-228.36	228.37	0.37	40°15'41.3525"N	104°30'10.0061"W	0.12	
3968.00	13.780	358.810	3942.89	-250.67	250.67	-0.06	40°15'41.5730"N	104°30'10.0084"W	0.12	
4063.00	14.000	358.860	4035.12	-273.47	273.47	-0.52	40°15'41.7983"N	104°30'10.0111"W	0.23	



Actual Wellpath Report

Guttersen D12-765 AWP
Page 3 of 7



REFERENCE WELLPATH IDENTIFICATION

Operator	NOBLE ENERGY, INC	Well	Guttersen D12-765
Field	WELD COUNTY (NOBLE NAD 83 GRID)	API	05-123-49073
Facility	SEC.01-T03N-R64W	Wellbore	Guttersen D12-765 AWB
Slot	SLOT#04 Guttersen D12-765 (316'FNL & 1685'FWL,SEC.01)		

WELLPATH DATA (185 stations)

MD [ft]	Inclination [°]	Azimuth [°]	TVD [ft]	Vert Sect [ft]	North [ft]	East [ft]	Latitude	Longitude	DLS [°/100ft]	Comments
4157.00	13.740	359.680	4126.37	-296.00	296.00	-0.81	40°15'42.0210"N	104°30'10.0116"W	0.35	
4252.00	13.850	358.360	4218.63	-318.65	318.65	-1.20	40°15'42.2448"N	104°30'10.0133"W	0.35	
4347.00	13.980	358.920	4310.85	-341.49	341.49	-1.74	40°15'42.4705"N	104°30'10.0170"W	0.20	
4441.00	13.940	358.710	4402.07	-364.17	364.16	-2.21	40°15'42.6946"N	104°30'10.0197"W	0.07	
4536.00	13.700	359.280	4494.32	-386.86	386.85	-2.61	40°15'42.9189"N	104°30'10.0216"W	0.29	
4630.00	13.580	358.830	4585.67	-409.02	409.02	-2.98	40°15'43.1379"N	104°30'10.0231"W	0.17	
4725.00	13.720	358.830	4677.99	-431.44	431.43	-3.43	40°15'43.3595"N	104°30'10.0257"W	0.15	
4819.00	13.580	0.580	4769.33	-453.62	453.61	-3.55	40°15'43.5786"N	104°30'10.0240"W	0.46	
4914.00	14.040	359.410	4861.58	-476.30	476.29	-3.56	40°15'43.8027"N	104°30'10.0208"W	0.57	
5008.00	13.870	0.670	4952.81	-498.96	498.95	-3.54	40°15'44.0267"N	104°30'10.0173"W	0.37	
5103.00	13.550	0.510	5045.10	-521.48	521.47	-3.31	40°15'44.2491"N	104°30'10.0110"W	0.34	
5198.00	13.540	0.860	5137.46	-543.72	543.72	-3.04	40°15'44.4689"N	104°30'10.0044"W	0.09	
5292.00	13.500	1.050	5228.86	-565.69	565.69	-2.68	40°15'44.6860"N	104°30'9.9965"W	0.06	
5387.00	13.520	2.180	5321.23	-587.88	587.87	-2.05	40°15'44.9051"N	104°30'9.9852"W	0.28	
5481.00	13.550	1.490	5412.62	-609.86	609.86	-1.35	40°15'45.1223"N	104°30'9.9729"W	0.17	
5576.00	13.430	1.920	5505.00	-632.01	632.01	-0.69	40°15'45.3411"N	104°30'9.9612"W	0.16	
5670.00	13.190	359.500	5596.47	-653.64	653.65	-0.42	40°15'45.5549"N	104°30'9.9546"W	0.65	
5765.00	13.590	0.790	5688.89	-675.64	675.64	-0.36	40°15'45.7723"N	104°30'9.9506"W	0.53	
5860.00	13.550	3.200	5781.24	-697.91	697.92	0.42	40°15'45.9922"N	104°30'9.9374"W	0.60	
5954.00	13.530	1.050	5872.63	-719.90	719.91	1.23	40°15'46.2094"N	104°30'9.9237"W	0.54	
6049.00	4.530	350.500	5966.36	-734.74	734.75	0.82	40°15'46.3561"N	104°30'9.9269"W	9.59	
6143.00	0.180	12.730	6060.26	-738.55	738.55	0.24	40°15'46.3938"N	104°30'9.9338"W	4.64	
6238.00	7.200	186.270	6155.01	-732.77	732.77	-0.38	40°15'46.3368"N	104°30'9.9426"W	7.77	
6332.00	15.300	180.600	6247.13	-714.49	714.49	-1.16	40°15'46.1562"N	104°30'9.9553"W	8.69	
6427.00	21.680	177.640	6337.18	-684.39	684.39	-0.56	40°15'45.8587"N	104°30'9.9520"W	6.79	
6521.00	31.090	176.950	6421.30	-642.70	642.71	1.45	40°15'45.4466"N	104°30'9.9321"W	10.02	
6615.00	39.790	177.000	6497.81	-588.32	588.33	4.32	40°15'44.9090"N	104°30'9.9030"W	9.26	
6710.00	48.710	177.010	6565.79	-522.17	522.20	7.78	40°15'44.2551"N	104°30'9.8679"W	9.39	
6805.00	57.280	177.260	6622.91	-446.46	446.50	11.56	40°15'43.5067"N	104°30'9.8302"W	9.02	
6899.00	65.390	176.680	6667.97	-364.15	364.21	15.93	40°15'42.6930"N	104°30'9.7857"W	8.64	
6994.00	75.630	176.840	6699.62	-274.84	274.91	20.98	40°15'41.8101"N	104°30'9.7335"W	10.78	
7088.00	81.970	181.220	6717.88	-182.71	182.79	22.50	40°15'40.8997"N	104°30'9.7273"W	8.15	
7183.00	90.920	182.150	6723.76	-88.04	88.11	19.71	40°15'39.9644"N	104°30'9.7770"W	9.47	
7277.00	89.660	180.520	6723.29	5.92	-5.86	17.52	40°15'39.0361"N	104°30'9.8188"W	2.19	

WELLPATH DATA (185 stations)

MD [ft]	Inclination [°]	Azimuth [°]	TVD [ft]	Vert Sect [ft]	North [ft]	East [ft]	Latitude	Longitude	DLS [°/100ft]	Comments
7372.00	89.600	180.790	6723.90	100.91	-100.85	16.44	40°15'38.0976"N	104°30'9.8466"W	0.29	
7467.00	89.630	179.730	6724.54	195.90	-195.85	16.01	40°15'37.1590"N	104°30'9.8660"W	1.12	
7561.00	90.000	179.550	6724.84	289.90	-289.85	16.60	40°15'36.2301"N	104°30'9.8720"W	0.44	
7655.00	89.660	177.300	6725.12	383.87	-383.80	19.18	40°15'35.3014"N	104°30'9.8523"W	2.42	
7750.00	90.060	179.300	6725.35	478.83	-478.76	22.00	40°15'34.3628"N	104°30'9.8297"W	2.15	
7844.00	90.120	180.860	6725.20	572.82	-572.75	21.87	40°15'33.4341"N	104°30'9.8450"W	1.66	
7939.00	89.820	181.910	6725.25	667.79	-667.72	19.57	40°15'32.4959"N	104°30'9.8884"W	1.15	
8033.00	89.600	179.780	6725.73	761.76	-761.71	18.18	40°15'31.5674"N	104°30'9.9199"W	2.28	
8127.00	89.600	180.640	6726.39	855.76	-855.70	17.84	40°15'30.6386"N	104°30'9.9380"W	0.91	
8222.00	89.880	178.760	6726.82	950.75	-950.70	18.34	40°15'29.6999"N	104°30'9.9454"W	2.00	
8317.00	89.230	181.300	6727.56	1045.74	-1045.69	18.29	40°15'28.7613"N	104°30'9.9598"W	2.76	



Actual Wellpath Report

Guttersen D12-765 AWP
Page 4 of 7



REFERENCE WELLPATH IDENTIFICATION

Operator	NOBLE ENERGY, INC	Well	Guttersen D12-765
Field	WELD COUNTY (NOBLE NAD 83 GRID)	API	05-123-49073
Facility	SEC.01-T03N-R64W	Wellbore	Guttersen D12-765 AWB
Slot	SLOT#04 Guttersen D12-765 (316'FNL & 1685'FWL,SEC.01)		

WELLPATH DATA (185 stations)

MD [ft]	Inclination [°]	Azimuth [°]	TVD [ft]	Vert Sect [ft]	North [ft]	East [ft]	Latitude	Longitude	DLS [°/100ft]	Comments
8411.00	90.990	179.210	6727.38	1139.73	-1139.68	17.87	40°15'27.8326"N	104°30'9.9788"W	2.91	
8506.00	88.890	179.020	6727.47	1234.72	-1234.66	19.34	40°15'26.8939"N	104°30'9.9737"W	2.22	
8600.00	90.890	179.190	6727.66	1328.70	-1328.64	20.80	40°15'25.9650"N	104°30'9.9684"W	2.14	
8695.00	90.400	181.780	6726.59	1423.68	-1423.62	20.00	40°15'25.0266"N	104°30'9.9925"W	2.77	
8789.00	90.090	182.390	6726.18	1517.61	-1517.56	16.58	40°15'24.0988"N	104°30'10.0503"W	0.73	
8884.00	90.060	182.250	6726.06	1612.52	-1612.48	12.74	40°15'23.1612"N	104°30'10.1136"W	0.15	
8978.00	89.600	181.860	6726.34	1706.44	-1706.42	9.36	40°15'22.2334"N	104°30'10.1707"W	0.64	
9073.00	89.690	181.330	6726.93	1801.39	-1801.38	6.72	40°15'21.2953"N	104°30'10.2186"W	0.57	
9261.00	89.510	180.620	6728.24	1989.35	-1989.35	3.52	40°15'19.4383"N	104°30'10.2871"W	0.39	
9356.00	89.600	179.490	6728.98	2084.34	-2084.34	3.43	40°15'18.4997"N	104°30'10.3021"W	1.19	
9450.00	89.600	179.180	6729.63	2178.34	-2178.34	4.52	40°15'17.5708"N	104°30'10.3016"W	0.33	
9545.00	89.660	178.550	6730.25	2273.32	-2273.32	6.40	40°15'16.6321"N	104°30'10.2911"W	0.67	
9639.00	90.490	180.510	6730.12	2367.32	-2367.31	7.17	40°15'15.7032"N	104°30'10.2948"W	2.26	
9734.00	90.340	180.140	6729.44	2462.31	-2462.30	6.64	40°15'14.7646"N	104°30'10.3156"W	0.42	
9828.00	90.590	180.900	6728.67	2556.30	-2556.29	5.78	40°15'13.8360"N	104°30'10.3402"W	0.85	
9923.00	90.000	180.030	6728.18	2651.29	-2651.29	5.01	40°15'12.8974"N	104°30'10.3639"W	1.11	
10018.00	90.490	180.260	6727.78	2746.29	-2746.29	4.77	40°15'11.9587"N	104°30'10.3808"W	0.57	
10112.00	91.660	177.470	6726.01	2840.25	-2840.24	6.63	40°15'11.0301"N	104°30'10.3704"W	3.22	
10206.00	90.220	178.260	6724.47	2934.18	-2934.16	10.13	40°15'10.1017"N	104°30'10.3389"W	1.75	
10301.00	89.840	180.950	6724.42	3029.17	-3029.15	10.79	40°15'9.1630"N	104°30'10.3442"W	2.86	
10395.00	89.870	179.250	6724.66	3123.16	-3123.15	10.62	40°15'8.2342"N	104°30'10.3600"W	1.81	
10490.00	89.930	180.020	6724.83	3218.16	-3218.14	11.23	40°15'7.2955"N	104°30'10.3659"W	0.81	
10584.00	89.780	180.280	6725.06	3312.16	-3312.14	10.98	40°15'6.3667"N	104°30'10.3827"W	0.32	
10678.00	90.390	180.690	6724.92	3406.15	-3406.14	10.19	40°15'5.4379"N	104°30'10.4066"W	0.78	
10773.00	90.360	180.900	6724.30	3501.14	-3501.13	8.87	40°15'4.4995"N	104°30'10.4374"W	0.22	
10867.00	89.010	179.740	6724.82	3595.13	-3595.12	8.34	40°15'3.5708"N	104°30'10.4578"W	1.89	
10962.00	89.840	180.840	6725.77	3690.12	-3690.11	7.86	40°15'2.6322"N	104°30'10.4778"W	1.45	
11057.00	89.160	180.630	6726.60	3785.10	-3785.10	6.64	40°15'1.6937"N	104°30'10.5073"W	0.75	
11152.00	89.320	180.420	6727.86	3880.08	-3880.09	5.77	40°15'0.7552"N	104°30'10.5323"W	0.28	
11246.00	89.530	180.500	6728.80	3974.07	-3974.08	5.02	40°14'59.8265"N	104°30'10.5556"W	0.24	
11341.00	89.650	180.440	6729.48	4069.06	-4069.07	4.24	40°14'58.8880"N	104°30'10.5795"W	0.14	
11530.00	89.900	179.010	6730.23	4258.06	-4258.06	5.15	40°14'57.0204"N	104°30'10.5952"W	0.77	
11625.00	90.450	179.780	6729.94	4353.05	-4353.06	6.15	40°14'56.0816"N	104°30'10.5960"W	1.00	
11719.00	90.330	179.840	6729.30	4447.05	-4447.06	6.46	40°14'55.1528"N	104°30'10.6056"W	0.14	

WELLPATH DATA (185 stations)

MD [ft]	Inclination [°]	Azimuth [°]	TVD [ft]	Vert Sect [ft]	North [ft]	East [ft]	Latitude	Longitude	DLS [°/100ft]	Comments
11814.00	88.920	180.090	6729.92	4542.05	-4542.05	6.52	40°14'54.2141"N	104°30'10.6186"W	1.51	
11908.00	89.040	178.320	6731.59	4636.02	-4636.02	7.82	40°14'53.2854"N	104°30'10.6154"W	1.89	
12002.00	90.610	177.730	6731.88	4729.97	-4729.96	11.06	40°14'52.3568"N	104°30'10.5873"W	1.78	
12097.00	90.700	181.310	6730.79	4824.95	-4824.94	11.86	40°14'51.4182"N	104°30'10.5908"W	3.77	
12192.00	89.810	179.480	6730.37	4919.94	-4919.93	11.20	40°14'50.4796"N	104°30'10.6130"W	2.14	
12286.00	89.500	179.380	6730.94	5013.94	-5013.92	12.14	40°14'49.5508"N	104°30'10.6146"W	0.35	
12380.00	89.990	180.070	6731.35	5107.93	-5107.92	12.59	40°14'48.6219"N	104°30'10.6224"W	0.90	
12475.00	90.730	178.960	6730.76	5202.93	-5202.91	13.39	40°14'47.6832"N	104°30'10.6258"W	1.40	
12569.00	88.240	179.390	6731.60	5296.91	-5296.89	14.75	40°14'46.7544"N	104°30'10.6220"W	2.69	
12664.00	89.990	178.010	6733.07	5391.88	-5391.85	16.90	40°14'45.8158"N	104°30'10.6080"W	2.35	
12758.00	90.050	180.110	6733.04	5485.86	-5485.83	18.45	40°14'44.8870"N	104°30'10.6017"W	2.23	



Actual Wellpath Report

Guttersen D12-765 AWP
Page 5 of 7



REFERENCE WELLPATH IDENTIFICATION

Operator	NOBLE ENERGY, INC	Well	Guttersen D12-765
Field	WELD COUNTY (NOBLE NAD 83 GRID)	API	05-123-49073
Facility	SEC.01-T03N-R64W	Wellbore	Guttersen D12-765 AWB
Slot	SLOT#04 Guttersen D12-765 (316'FNL & 1685'FWL,SEC.01)		

WELLPATH DATA (185 stations)

MD [ft]	Inclination [°]	Azimuth [°]	TVD [ft]	Vert Sect [ft]	North [ft]	East [ft]	Latitude	Longitude	DLS [°/100ft]	Comments
12853.00	90.550	179.360	6732.54	5580.86	-5580.83	18.88	40°14'43.9483"N	104°30'10.6098"W	0.95	
12947.00	90.480	180.270	6731.69	5674.86	-5674.82	19.19	40°14'43.0194"N	104°30'10.6195"W	0.97	
13042.00	89.990	180.410	6731.30	5769.85	-5769.82	18.62	40°14'42.0808"N	104°30'10.6406"W	0.54	
13136.00	89.900	178.770	6731.39	5863.85	-5863.82	19.30	40°14'41.1519"N	104°30'10.6455"W	1.75	
13231.00	90.360	179.060	6731.18	5958.84	-5958.80	21.10	40°14'40.2132"N	104°30'10.6361"W	0.57	
13325.00	91.130	178.320	6729.96	6052.81	-6052.76	23.24	40°14'39.2845"N	104°30'10.6220"W	1.14	
13420.00	89.620	181.150	6729.34	6147.79	-6147.75	23.68	40°14'38.3458"N	104°30'10.6301"W	3.38	
13514.00	89.590	179.960	6729.98	6241.78	-6241.74	22.77	40°14'37.4172"N	104°30'10.6555"W	1.27	
13609.00	90.880	179.440	6729.59	6336.78	-6336.74	23.27	40°14'36.4784"N	104°30'10.6629"W	1.46	
13703.00	90.330	180.720	6728.60	6430.77	-6430.73	23.14	40°14'35.5497"N	104°30'10.6782"W	1.48	
13797.00	90.580	180.310	6727.85	6524.76	-6524.72	22.29	40°14'34.6210"N	104°30'10.7027"W	0.51	
13892.00	90.050	180.530	6727.33	6619.75	-6619.72	21.60	40°14'33.6824"N	104°30'10.7255"W	0.60	
13987.00	90.270	180.280	6727.07	6714.75	-6714.71	20.93	40°14'32.7438"N	104°30'10.7479"W	0.35	
14081.00	90.150	179.710	6726.72	6808.74	-6808.71	20.93	40°14'31.8150"N	104°30'10.7614"W	0.62	
14176.00	90.120	180.560	6726.50	6903.74	-6903.71	20.71	40°14'30.8763"N	104°30'10.7781"W	0.90	
14270.00	89.750	180.320	6726.61	6997.74	-6997.71	19.99	40°14'29.9476"N	104°30'10.8010"W	0.47	
14365.00	89.650	176.880	6727.10	7092.70	-7092.66	22.31	40°14'29.0090"N	104°30'10.7849"W	3.62	
14459.00	91.620	180.160	6726.06	7186.65	-7186.61	24.74	40°14'28.0804"N	104°30'10.7672"W	4.07	
14554.00	89.750	179.960	6724.93	7281.64	-7281.60	24.64	40°14'27.1418"N	104°30'10.7822"W	1.98	
14648.00	89.680	179.740	6725.39	7375.64	-7375.60	24.88	40°14'26.2130"N	104°30'10.7927"W	0.25	
14742.00	89.500	180.590	6726.07	7469.63	-7469.59	24.61	40°14'25.2842"N	104°30'10.8098"W	0.92	
14837.00	89.750	180.460	6726.69	7564.62	-7564.59	23.74	40°14'24.3456"N	104°30'10.8348"W	0.30	
14932.00	89.070	180.460	6727.67	7659.61	-7659.58	22.98	40°14'23.4071"N	104°30'10.8584"W	0.72	
15026.00	89.440	179.680	6728.89	7753.60	-7753.57	22.87	40°14'22.4783"N	104°30'10.8735"W	0.92	
15121.00	90.360	179.460	6729.05	7848.60	-7848.57	23.58	40°14'21.5396"N	104°30'10.8781"W	1.00	
15216.00	90.550	179.490	6728.30	7943.60	-7943.56	24.45	40°14'20.6008"N	104°30'10.8806"W	0.20	
15310.00	89.810	180.240	6728.00	8037.59	-8037.56	24.67	40°14'19.6720"N	104°30'10.8914"W	1.12	
15405.00	89.220	181.270	6728.81	8132.58	-8132.54	23.42	40°14'18.7335"N	104°30'10.9213"W	1.25	
15499.00	88.910	178.580	6730.34	8226.55	-8226.52	23.54	40°14'17.8049"N	104°30'10.9333"W	2.88	
15593.00	90.760	179.870	6730.61	8320.54	-8320.51	24.81	40°14'16.8761"N	104°30'10.9306"W	2.40	
15688.00	90.510	180.320	6729.56	8415.54	-8415.50	24.66	40°14'15.9374"N	104°30'10.9464"W	0.54	
15782.00	91.040	181.760	6728.29	8509.50	-8509.47	22.95	40°14'15.0090"N	104°30'10.9820"W	1.63	
15877.00	88.330	179.090	6728.81	8604.48	-8604.45	22.24	40°14'14.0706"N	104°30'11.0049"W	4.00	
15971.00	90.020	180.040	6730.16	8698.46	-8698.44	22.96	40°14'13.1418"N	104°30'11.0093"W	2.06	

WELLPATH DATA (185 stations)

MD [ft]	Inclination [°]	Azimuth [°]	TVD [ft]	Vert Sect [ft]	North [ft]	East [ft]	Latitude	Longitude	DLS [°/100ft]	Comments
16066.00	89.960	180.350	6730.18	8793.46	-8793.43	22.63	40°14'12.2032"N	104°30'11.0272"W	0.33	
16160.00	89.750	180.640	6730.42	8887.45	-8887.43	21.82	40°14'11.2745"N	104°30'11.0513"W	0.38	
16255.00	90.210	180.520	6730.45	8982.45	-8982.43	20.86	40°14'10.3359"N	104°30'11.0775"W	0.50	
16350.00	90.270	180.610	6730.05	9077.44	-9077.42	19.92	40°14'9.3973"N	104°30'11.1033"W	0.11	
16444.00	90.700	180.440	6729.26	9171.42	-9171.41	19.06	40°14'8.4687"N	104°30'11.1281"W	0.49	
16539.00	89.500	180.490	6729.09	9266.42	-9266.41	18.29	40°14'7.5301"N	104°30'11.1518"W	1.26	
16633.00	90.150	179.050	6729.38	9360.41	-9360.40	18.67	40°14'6.6012"N	104°30'11.1605"W	1.68	
16728.00	90.450	180.740	6728.88	9455.41	-9455.40	18.84	40°14'5.6625"N	104°30'11.1721"W	1.81	
16822.00	89.810	178.500	6728.67	9549.40	-9549.39	19.47	40°14'4.7337"N	104°30'11.1776"W	2.48	
16917.00	90.420	178.530	6728.48	9644.38	-9644.36	21.93	40°14'3.7950"N	104°30'11.1597"W	0.64	
17011.00	90.210	180.750	6727.96	9738.37	-9738.35	22.52	40°14'2.8662"N	104°30'11.1657"W	2.37	

REFERENCE WELLPATH IDENTIFICATION

Operator	NOBLE ENERGY, INC	Well	Guttersen D12-765
Field	WELD COUNTY (NOBLE NAD 83 GRID)	API	05-123-49073
Facility	SEC.01-T03N-R64W	Wellbore	Guttersen D12-765 AWB
Slot	SLOT#04 Guttersen D12-765 (316'FNL & 1685'FWL,SEC.01)		

WELLPATH DATA (185 stations) † = interpolated, ‡ = extrapolated station

MD [ft]	Inclination [°]	Azimuth [°]	TVD [ft]	Vert Sect [ft]	North [ft]	East [ft]	Latitude	Longitude	DLS [°/100ft]	Comments
17106.00	89.710	180.000	6728.03	9833.36	-9833.34	21.90	40°14'1.9276"N	104°30'11.1875"W	0.95	
17200.00	90.110	179.820	6728.18	9927.36	-9927.34	22.05	40°14'0.9987"N	104°30'11.1992"W	0.47	
17295.00	89.810	179.310	6728.24	10022.36	-10022.34	22.77	40°14'0.0600"N	104°30'11.2037"W	0.62	
17362.00	89.710	178.860	6728.52	10089.36	-10089.33	23.84	40°13'59.3979"N	104°30'11.1996"W	0.69	Last BH MWD Survey
17386.00‡	89.710	178.860	6728.64	10113.35	-10113.33	24.31	40°13'59.1607"N	104°30'11.1969"W	0.00	Projection to Bit

TARGETS

Name	TVD [ft]	North [ft]	East [ft]	Grid East [US ft]	Grid North [US ft]	Latitude	Longitude	Shape
GUTTERSEN D12-785 SECTION 1	0.00	-0.75	-66.98	3278230.49	1339436.93	40°15'39.0960"N	104°30'10.9080"W	polygon
	2D Polygon: dimensions not calculated							
GUTTERSEN D12-785 SECTION 12	0.00	-0.75	-66.98	3278230.49	1339436.93	40°15'39.0960"N	104°30'10.9080"W	polygon
	2D Polygon: dimensions not calculated							
Guttersen D12-765 BHL PLAN (200'FSL & 1653'FWL,SEC.12)	6727.00	-10114.61	33.87	3278331.33	1329323.53	40°13'59.1470"N	104°30'11.0739"W	point
Guttersen D12-765 LP PLAN/ LP (200'FNL & 1694'FWL,SEC.01)	6727.00	116.17	8.66	3278306.12	1339553.85	40°15'40.2429"N	104°30'9.9155"W	point

WELLPATH COMPOSITION - Ref Wellbore: Guttersen D12-765 AWB Ref Wellpath: Guttersen D12-765 AWP

Start MD [ft]	End MD [ft]	Positional Uncertainty Model	Log Name/Comment	Wellbore	Survey Date
0.00	1931.00	Gyrodata 2015 - GC+DROP+COND	Gyrodata Surface Surveys <80'-1931'>	Guttersen D12-765 AWB	4/21/2022
1931.00	17386.00	OWSG MWD rev2 (MS+IFR1)	8.5" AT-Curve Pro OWSG MWD rev2 (MS+IFR1) <1985'- 17362'>	Guttersen D12-765 AWB	5/2/2022



Actual Wellpath Report

Guttersen D12-765 AWP

Page 7 of 7



REFERENCE WELLPATH IDENTIFICATION

Operator	NOBLE ENERGY, INC	Well	Guttersen D12-765
Field	WELD COUNTY (NOBLE NAD 83 GRID)	API	05-123-49073
Facility	SEC.01-T03N-R64W	Wellbore	Guttersen D12-765 AWB
Slot	SLOT#04 Guttersen D12-765 (316'FNL & 1685'FWL,SEC.01)		

WELLPATH COMMENTS

MD [ft]	Inclination [°]	Azimuth [°]	TVD [ft]	Comment
1931.00	0.940	356.230	1930.94	Tie to Surface Gyro
1985.00	0.240	336.260	1984.94	First BH MWD Survey
17362.00	89.710	178.860	6728.52	Last BH MWD Survey
17386.00	89.710	178.860	6728.64	Projection to Bit