

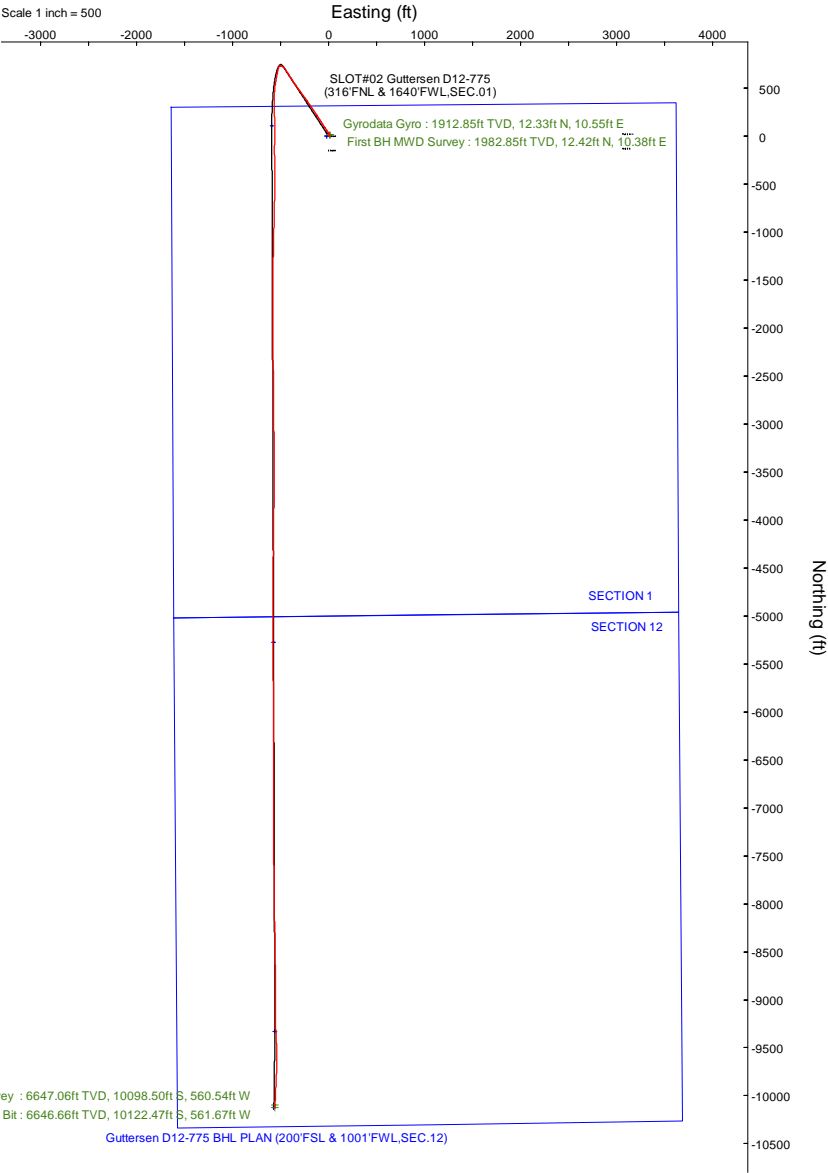
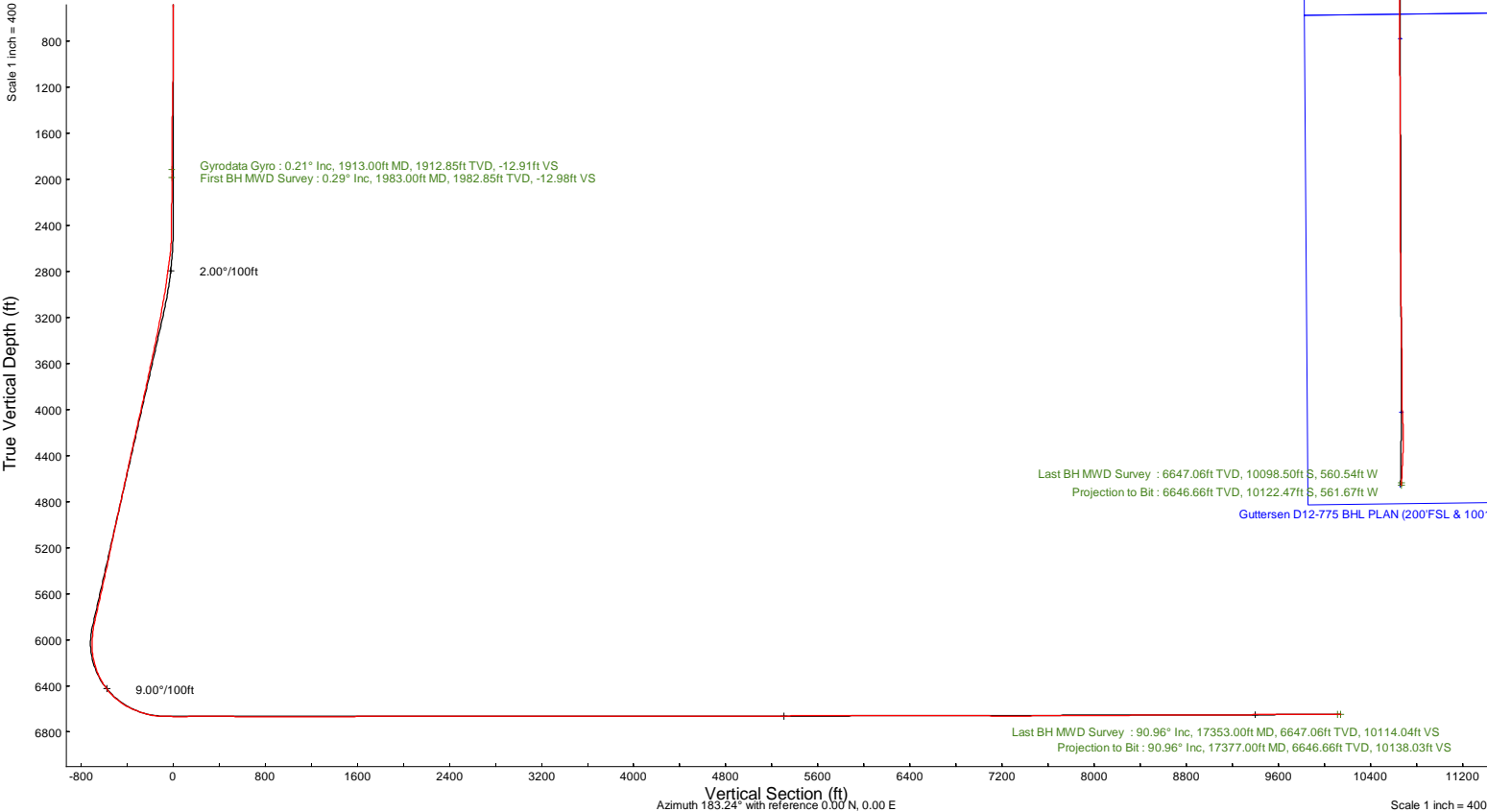
NOBLE ENERGY, INC



Location:	COLORADO	Slot:	SLOT#02 Gutteresen D12-775 (316°FNL & 1640°FWL,SEC.01)
Field:	WELD COUNTY (NOBLE NAD 83 GRID)	Well:	Gutteresen D12-775
Facility:	SEC.01-T03N-R64W	Wellbore:	Gutteresen D12-775 PWB

Plot reference wellpath is Gutteresen D12-775 (REV-A.0) PWP	Grid System: NAD83 / Lambert Colorado SP, Northern Zone (501), US feet
True vertical depths are referenced to (4745'GL+30'KB@4775'RKB) (RKB)	North Reference: Grid north
Reference wellpath measured depths are referenced to (4745'GL+30'KB@4775'RKB) (RKB)	Scale: True distance
(4745'GL+30'KB@4775'RKB) (RKB) to Mean Sea Level: 4775 feet	Coordinates are in feet referenced to Slot
Mean Sea Level to Ground level (At Slot: SLOT#02 Gutteresen D12-775 (316°FNL & 1640°FWL,SEC.01)): 0 feet	Depths are in feet
Offset wellpath MDs are referenced to each path's default MD datum	Created by: guenaler on 2022-06-02; Database: WA_Denver

Location Information					
Facility Name			Grid East (US ft)	Grid North (US ft)	Latitude
SEC.01-T03N-R64W			3278229.920	1339437.650	40°15'39.1032"N
Slot			Grid East (US ft)	Grid North (US ft)	Latitude
SLOT#02 Gutteresen D12-775 (316°FNL & 1640°FWL,SEC.01)			3278252.812	1339437.182	40°15'39.0960"N
(4745'GL+30'KB@4775'RKB) (RKB) to Ground level (At Slot: SLOT#02 Gutteresen D12-775 (316°FNL & 1640°FWL,SEC.01))					4775ft
Mean Sea Level to Ground level (At Slot: SLOT#02 Gutteresen D12-775 (316°FNL & 1640°FWL,SEC.01))					0ft
(4745'GL+30'KB@4775'RKB) (RKB) to Mean Sea Level					4775ft





Actual Wellpath Report

Guttersen D12-775 AWP

Page 1 of 7



REFERENCE WELLPATH IDENTIFICATION

Operator	NOBLE ENERGY, INC	Well	Guttersen D12-775
Field	WELD COUNTY (NOBLE NAD 83 GRID)	API	05-123-49080
Facility	SEC.01-T03N-R64W	Wellbore	Guttersen D12-775 AWB
Slot	SLOT#02 Guttersen D12-775 (316'FNL & 1640'FWL,SEC.01)		

REPORT SETUP INFORMATION

Projection System	NAD83 / Lambert Colorado SP, Northern Zone (501), US feet	Software System	WellArchitect® 6.0
North Reference	Grid	User	Guenaler
Scale	0.999957	Report Generated	6/2/2022 at 3:53:55 PM
Convergence at slot	0.64° East	Database	WA_Denver

WELLPATH LOCATION

	Local coordinates		Grid coordinates		Geographic coordinates	
	North[ft]	East[ft]	Easting[US ft]	Northing[US ft]	Latitude	Longitude
Slot Location	-0.47	22.89	3278252.81	1339437.18	40°15'39.0960"N	104°30'10.6200"W
Facility Reference Pt			3278229.92	1339437.65	40°15'39.1032"N	104°30'10.9152"W
Field Reference Pt			3000000.00	4454105.15	48°46'34.3150"N	105°30'0.0000"W

WELLPATH DATUM

Calculation method	Minimum curvature	(4745'GL+30'KB@4775'RKB) (RKB) to Facility Vertical Datum	4775.00ft
Horizontal Reference Pt	Slot	(4745'GL+30'KB@4775'RKB) (RKB) to Mean Sea Level	4775.00ft
Vertical Reference Pt	(4745'GL+30'KB@4775'RKB) (RKB)	(4745'GL+30'KB@4775'RKB) (RKB) to Ground Level at Slot (SLOT#02 Guttersen D12-775 (316'FNL & 1640'FWL,SEC.01))	4775.00ft
MD Reference Pt	(4745'GL+30'KB@4775'RKB) (RKB)	Section Origin	N 0.00, E 0.00 ft
Field Vertical Reference	Mean Sea Level	Section Azimuth	183.24°



Actual Wellpath Report

Guttersen D12-775 AWP
Page 2 of 7



REFERENCE WELLPATH IDENTIFICATION

Operator	NOBLE ENERGY, INC	Well	Guttersen D12-775
Field	WELD COUNTY (NOBLE NAD 83 GRID)	API	05-123-49080
Facility	SEC.01-T03N-R64W	Wellbore	Guttersen D12-775 AWB
Slot	SLOT#02 Guttersen D12-775 (316'FNL & 1640'FWL,SEC.01)		

WELLPATH DATA (186 stations)

MD [ft]	Inclination [°]	Azimuth [°]	TVD [ft]	Vert Sect [ft]	North [ft]	East [ft]	Latitude	Longitude	DLS [°/100ft]	Comments
0.00	0.000	84.430	0.00	0.00	0.00	0.00	40°15'39.0960"N	104°30'10.6200"W	0.00	
80.00	0.210	84.430	80.00	-0.02	0.01	0.15	40°15'39.0961"N	104°30'10.6181"W	0.26	
173.00	0.550	104.930	173.00	0.04	-0.08	0.75	40°15'39.0951"N	104°30'10.6104"W	0.39	
263.00	0.450	45.680	262.99	-0.13	0.05	1.42	40°15'39.0964"N	104°30'10.6017"W	0.56	
358.00	0.270	69.400	357.99	-0.50	0.39	1.89	40°15'39.0997"N	104°30'10.5955"W	0.24	
452.00	0.290	72.900	451.99	-0.67	0.54	2.33	40°15'39.1011"N	104°30'10.5899"W	0.03	
547.00	0.400	122.040	546.99	-0.59	0.43	2.84	40°15'39.1000"N	104°30'10.5833"W	0.32	
641.00	0.340	119.790	640.99	-0.31	0.12	3.36	40°15'39.0968"N	104°30'10.5767"W	0.07	
735.00	0.180	71.910	734.99	-0.24	0.03	3.74	40°15'39.0959"N	104°30'10.5717"W	0.27	
830.00	0.150	304.950	829.99	-0.36	0.15	3.78	40°15'39.0970"N	104°30'10.5712"W	0.31	
924.00	0.230	319.400	923.99	-0.56	0.36	3.56	40°15'39.0992"N	104°30'10.5741"W	0.10	
1018.00	0.520	332.580	1017.98	-1.06	0.88	3.24	40°15'39.1043"N	104°30'10.5781"W	0.32	
1113.00	0.620	353.700	1112.98	-1.94	1.77	2.98	40°15'39.1132"N	104°30'10.5813"W	0.24	
1207.00	0.990	10.490	1206.97	-3.25	3.08	3.08	40°15'39.1261"N	104°30'10.5799"W	0.46	
1301.00	1.170	11.750	1300.95	-5.00	4.82	3.42	40°15'39.1432"N	104°30'10.5752"W	0.19	
1396.00	1.120	28.790	1395.94	-6.80	6.58	4.06	40°15'39.1606"N	104°30'10.5666"W	0.36	
1490.00	1.110	36.260	1489.92	-8.39	8.12	5.04	40°15'39.1757"N	104°30'10.5538"W	0.15	
1584.00	1.200	38.970	1583.90	-9.95	9.62	6.20	40°15'39.1904"N	104°30'10.5386"W	0.11	
1679.00	1.170	54.160	1678.88	-11.37	10.96	7.61	40°15'39.2035"N	104°30'10.5202"W	0.33	
1773.00	1.130	71.640	1772.86	-12.32	11.81	9.27	40°15'39.2117"N	104°30'10.4987"W	0.37	
1867.00	0.340	69.840	1866.85	-12.77	12.20	10.41	40°15'39.2154"N	104°30'10.4839"W	0.84	
1913.00	0.210	2.660	1912.85	-12.91	12.33	10.55	40°15'39.2167"N	104°30'10.4822"W	0.70	Gyrodata Gyro
1983.00	0.290	255.200	1982.85	-12.98	12.42	10.38	40°15'39.2175"N	104°30'10.4843"W	0.58	First BH MWD Survey
2077.00	0.090	2.470	2076.85	-12.98	12.43	10.15	40°15'39.2177"N	104°30'10.4872"W	0.35	
2172.00	0.070	98.610	2171.85	-13.05	12.50	10.21	40°15'39.2183"N	104°30'10.4864"W	0.13	
2267.00	0.170	335.090	2266.85	-13.17	12.61	10.21	40°15'39.2195"N	104°30'10.4865"W	0.23	
2361.00	0.090	251.140	2360.85	-13.27	12.72	10.08	40°15'39.2205"N	104°30'10.4881"W	0.20	
2455.00	1.340	328.740	2454.84	-14.14	13.63	9.44	40°15'39.2297"N	104°30'10.4962"W	1.41	
2550.00	4.580	328.610	2549.70	-18.18	17.82	6.89	40°15'39.2713"N	104°30'10.5285"W	3.41	
2644.00	6.650	328.120	2643.25	-25.72	25.65	2.06	40°15'39.3492"N	104°30'10.5897"W	2.20	
2739.00	10.450	329.100	2737.17	-37.36	37.72	-5.27	40°15'39.4693"N	104°30'10.6825"W	4.00	
2833.00	9.720	326.900	2829.72	-50.81	51.68	-13.98	40°15'39.6082"N	104°30'10.7929"W	0.88	
2928.00	9.950	326.150	2923.32	-63.81	65.21	-22.93	40°15'39.7429"N	104°30'10.9064"W	0.28	
3022.00	12.330	325.140	3015.55	-78.19	80.19	-33.20	40°15'39.8921"N	104°30'11.0365"W	2.54	

WELLPATH DATA (186 stations)

MD [ft]	Inclination [°]	Azimuth [°]	TVD [ft]	Vert Sect [ft]	North [ft]	East [ft]	Latitude	Longitude	DLS [°/100ft]	Comments
3116.00	12.700	325.830	3107.31	-94.30	96.98	-44.74	40°15'40.0592"N	104°30'11.1829"W	0.42	
3211.00	12.580	327.430	3200.01	-110.99	114.34	-56.17	40°15'40.2320"N	104°30'11.3279"W	0.39	
3305.00	13.480	328.300	3291.59	-128.27	132.29	-67.44	40°15'40.4106"N	104°30'11.4706"W	0.98	
3400.00	14.680	326.200	3383.73	-146.96	151.71	-79.95	40°15'40.6040"N	104°30'11.6293"W	1.37	
3494.00	14.730	326.710	3474.65	-166.07	171.60	-93.14	40°15'40.8019"N	104°30'11.7964"W	0.15	
3589.00	14.513	329.330	3566.58	-185.65	191.93	-105.84	40°15'41.0043"N	104°30'11.9573"W	0.73	
3683.00	14.560	326.160	3657.57	-204.86	211.88	-118.43	40°15'41.2028"N	104°30'12.1168"W	0.85	
3778.00	15.080	325.540	3749.41	-224.16	231.98	-132.07	40°15'41.4030"N	104°30'12.2898"W	0.57	
3872.00	15.540	325.780	3840.07	-243.83	252.48	-146.07	40°15'41.6070"N	104°30'12.4674"W	0.49	
3966.00	15.600	326.190	3930.63	-263.92	273.39	-160.19	40°15'41.8153"N	104°30'12.6464"W	0.13	
4061.00	15.860	326.100	4022.07	-284.46	294.78	-174.53	40°15'42.0282"N	104°30'12.8284"W	0.27	



Actual Wellpath Report

Guttersen D12-775 AWP
Page 3 of 7



REFERENCE WELLPATH IDENTIFICATION

Operator	NOBLE ENERGY, INC	Well	Guttersen D12-775
Field	WELD COUNTY (NOBLE NAD 83 GRID)	API	05-123-49080
Facility	SEC.01-T03N-R64W	Wellbore	Guttersen D12-775 AWB
Slot	SLOT#02 Guttersen D12-775 (316'FNL & 1640'FWL,SEC.01)		

WELLPATH DATA (186 stations)

MD [ft]	Inclination [°]	Azimuth [°]	TVD [ft]	Vert Sect [ft]	North [ft]	East [ft]	Latitude	Longitude	DLS [°/100ft]	Comments
4156.00	15.870	325.460	4113.45	-305.08	316.26	-189.14	40°15'42.2420"N	104°30'13.0137"W	0.18	
4250.00	16.030	324.110	4203.83	-325.30	337.36	-204.03	40°15'42.4522"N	104°30'13.2027"W	0.43	
4345.00	15.770	324.350	4295.20	-345.53	358.47	-219.25	40°15'42.6625"N	104°30'13.3959"W	0.28	
4439.00	15.930	324.780	4385.62	-365.57	379.39	-234.13	40°15'42.8709"N	104°30'13.5849"W	0.21	
4534.00	15.370	323.940	4477.10	-385.53	400.22	-249.06	40°15'43.0783"N	104°30'13.7744"W	0.64	
4628.00	15.640	324.170	4567.68	-405.00	420.56	-263.81	40°15'43.2810"N	104°30'13.9617"W	0.29	
4723.00	15.820	324.580	4659.12	-425.06	441.50	-278.81	40°15'43.4895"N	104°30'14.1522"W	0.22	
4817.00	15.380	323.740	4749.66	-444.68	461.99	-293.61	40°15'43.6937"N	104°30'14.3401"W	0.53	
4912.00	15.340	324.570	4841.26	-464.22	482.39	-308.35	40°15'43.8968"N	104°30'14.5272"W	0.24	
5006.00	16.090	323.910	4931.75	-484.00	503.05	-323.23	40°15'44.1026"N	104°30'14.7161"W	0.82	
5101.00	15.900	324.200	5023.07	-504.29	524.24	-338.59	40°15'44.3137"N	104°30'14.9113"W	0.22	
5196.00	15.380	323.960	5114.56	-524.15	544.98	-353.62	40°15'44.5204"N	104°30'15.1020"W	0.55	
5290.00	14.650	325.880	5205.35	-543.25	564.90	-367.62	40°15'44.7187"N	104°30'15.2798"W	0.94	
5385.00	14.200	327.160	5297.35	-562.22	584.64	-380.68	40°15'44.9152"N	104°30'15.4453"W	0.58	
5480.00	15.130	327.190	5389.26	-581.66	604.85	-393.72	40°15'45.1164"N	104°30'15.6106"W	0.98	
5574.00	14.910	327.130	5480.04	-601.35	625.31	-406.93	40°15'45.3201"N	104°30'15.7780"W	0.23	
5669.00	15.380	327.290	5571.74	-621.43	646.18	-420.37	40°15'45.5277"N	104°30'15.9483"W	0.50	
5763.00	15.340	327.060	5662.39	-641.55	667.10	-433.86	40°15'45.7360"N	104°30'16.1194"W	0.08	
5858.00	15.870	327.260	5753.88	-662.21	688.57	-447.72	40°15'45.9497"N	104°30'16.2950"W	0.56	
5952.00	15.980	322.220	5844.28	-682.37	709.61	-462.60	40°15'46.1592"N	104°30'16.4839"W	1.48	
6047.00	11.850	306.830	5936.50	-697.65	725.81	-478.43	40°15'46.3210"N	104°30'16.6857"W	5.80	
6141.00	12.280	281.260	6028.49	-704.39	733.55	-495.97	40°15'46.3995"N	104°30'16.9109"W	5.66	
6236.00	10.690	232.940	6121.79	-700.09	730.21	-512.95	40°15'46.3683"N	104°30'17.1304"W	9.96	
6330.00	15.800	198.050	6213.40	-682.04	712.75	-523.90	40°15'46.1970"N	104°30'17.2741"W	9.86	
6425.00	23.940	191.050	6302.68	-650.39	681.48	-531.61	40°15'45.8888"N	104°30'17.3781"W	8.91	
6519.00	32.930	190.390	6385.26	-606.05	637.54	-539.89	40°15'45.4556"N	104°30'17.4913"W	9.57	
6614.00	41.750	189.960	6460.71	-548.90	580.87	-550.04	40°15'44.8968"N	104°30'17.6304"W	9.29	
6708.00	51.640	186.860	6525.12	-480.87	513.28	-559.88	40°15'44.2300"N	104°30'17.7671"W	10.79	
6803.00	61.110	184.230	6577.67	-401.92	434.64	-567.42	40°15'43.4538"N	104°30'17.8756"W	10.23	
6897.00	68.830	180.040	6617.42	-316.86	349.61	-570.49	40°15'42.6139"N	104°30'17.9276"W	9.15	
6992.00	75.750	176.780	6646.31	-226.75	259.22	-567.93	40°15'41.7205"N	104°30'17.9077"W	7.98	
7087.00	84.970	177.160	6662.20	-133.76	165.79	-562.99	40°15'40.7967"N	104°30'17.8574"W	9.71	
7181.00	89.750	180.290	6666.53	-40.18	71.96	-560.90	40°15'39.8693"N	104°30'17.8442"W	6.08	
7276.00	89.850	182.330	6666.86	54.76	-23.01	-563.08	40°15'38.9311"N	104°30'17.8859"W	2.15	

WELLPATH DATA (186 stations)

MD [ft]	Inclination [°]	Azimuth [°]	TVD [ft]	Vert Sect [ft]	North [ft]	East [ft]	Latitude	Longitude	DLS [°/100ft]	Comments
7370.00	90.550	180.550	6666.54	148.71	-116.98	-565.44	40°15'38.0029"N	104°30'17.9300"W	2.03	
7465.00	90.460	178.380	6665.70	243.49	-211.97	-564.55	40°15'37.0642"N	104°30'17.9323"W	2.29	
7559.00	89.690	178.680	6665.58	337.17	-305.93	-562.14	40°15'36.1354"N	104°30'17.9148"W	0.88	
7654.00	89.750	179.210	6666.04	431.91	-400.92	-560.39	40°15'35.1966"N	104°30'17.9060"W	0.56	
7748.00	89.510	181.130	6666.65	525.76	-494.91	-560.67	40°15'34.2679"N	104°30'17.9232"W	2.06	
7843.00	89.630	181.520	6667.36	620.71	-589.88	-562.87	40°15'33.3297"N	104°30'17.9652"W	0.43	
7937.00	89.820	181.160	6667.81	714.66	-683.85	-565.06	40°15'32.4014"N	104°30'18.0072"W	0.43	
8031.00	90.400	181.930	6667.63	808.61	-777.82	-567.60	40°15'31.4732"N	104°30'18.0535"W	1.03	
8126.00	90.090	181.030	6667.23	903.57	-872.79	-570.05	40°15'30.5351"N	104°30'18.0989"W	1.00	
8220.00	90.180	181.290	6667.00	997.51	-966.77	-571.96	40°15'29.6066"N	104°30'18.1370"W	0.29	
8315.00	89.880	181.210	6666.95	1092.45	-1061.74	-574.03	40°15'28.6684"N	104°30'18.1775"W	0.33	



Actual Wellpath Report

Guttersen D12-775 AWP
Page 4 of 7



REFERENCE WELLPATH IDENTIFICATION

Operator	NOBLE ENERGY, INC	Well	Guttersen D12-775
Field	WELD COUNTY (NOBLE NAD 83 GRID)	API	05-123-49080
Facility	SEC.01-T03N-R64W	Wellbore	Guttersen D12-775 AWB
Slot	SLOT#02 Guttersen D12-775 (316'FNL & 1640'FWL,SEC.01)		

WELLPATH DATA (186 stations)

MD [ft]	Inclination [°]	Azimuth [°]	TVD [ft]	Vert Sect [ft]	North [ft]	East [ft]	Latitude	Longitude	DLS [°/100ft]	Comments
8409.00	89.630	181.440	6667.36	1186.39	-1155.72	-576.20	40°15'27.7400"N	104°30'18.2191"W	0.36	
8504.00	89.720	181.040	6667.89	1281.34	-1250.69	-578.26	40°15'26.8018"N	104°30'18.2594"W	0.43	
8598.00	89.690	180.810	6668.38	1375.26	-1344.68	-579.77	40°15'25.8732"N	104°30'18.2926"W	0.25	
8693.00	91.050	181.240	6667.77	1470.18	-1439.66	-581.47	40°15'24.9349"N	104°30'18.3282"W	1.50	
8787.00	90.150	179.550	6666.78	1564.06	-1533.65	-582.12	40°15'24.0062"N	104°30'18.3502"W	2.04	
8882.00	91.020	179.680	6665.81	1658.86	-1628.64	-581.48	40°15'23.0675"N	104°30'18.3557"W	0.93	
8976.00	90.250	179.300	6664.77	1752.65	-1722.63	-580.65	40°15'22.1387"N	104°30'18.3585"W	0.91	
9071.00	90.120	179.640	6664.46	1847.45	-1817.62	-579.77	40°15'21.1999"N	104°30'18.3609"W	0.38	
9165.00	89.970	179.600	6664.39	1941.26	-1911.62	-579.14	40°15'20.2710"N	104°30'18.3665"W	0.17	
9260.00	90.060	179.830	6664.36	2036.08	-2006.62	-578.67	40°15'19.3323"N	104°30'18.3741"W	0.26	
9354.00	89.910	180.210	6664.39	2129.93	-2100.62	-578.70	40°15'18.4034"N	104°30'18.3882"W	0.43	
9448.00	90.060	180.170	6664.41	2223.80	-2194.62	-579.02	40°15'17.4747"N	104°30'18.4058"W	0.17	
9638.00	89.970	179.670	6664.36	2413.48	-2384.62	-578.75	40°15'15.5972"N	104°30'18.4298"W	0.27	
9732.00	90.060	179.500	6664.34	2507.29	-2478.62	-578.07	40°15'14.6683"N	104°30'18.4347"W	0.20	
9827.00	90.090	179.590	6664.21	2602.10	-2573.61	-577.32	40°15'13.7295"N	104°30'18.4387"W	0.10	
9921.00	90.090	179.620	6664.07	2695.91	-2667.61	-576.67	40°15'12.8006"N	104°30'18.4439"W	0.03	
10016.00	89.970	179.130	6664.02	2790.69	-2762.61	-575.63	40°15'11.8619"N	104°30'18.4443"W	0.53	
10110.00	89.660	179.240	6664.32	2884.46	-2856.60	-574.29	40°15'10.9330"N	104°30'18.4407"W	0.35	
10205.00	89.540	179.420	6664.98	2979.23	-2951.59	-573.18	40°15'9.9942"N	104°30'18.4401"W	0.23	
10299.00	89.630	179.190	6665.66	3073.01	-3045.58	-572.04	40°15'9.0653"N	104°30'18.4390"W	0.26	
10394.00	90.370	179.560	6665.66	3167.79	-3140.57	-571.01	40°15'8.1266"N	104°30'18.4394"W	0.87	
10488.00	89.780	179.490	6665.54	3261.59	-3234.57	-570.23	40°15'7.1977"N	104°30'18.4429"W	0.63	
10582.00	90.000	179.660	6665.72	3355.40	-3328.56	-569.53	40°15'6.2688"N	104°30'18.4475"W	0.30	
10677.00	90.150	179.400	6665.60	3450.20	-3423.56	-568.75	40°15'5.3300"N	104°30'18.4512"W	0.32	
10771.00	90.220	179.330	6665.29	3543.99	-3517.55	-567.71	40°15'4.4011"N	104°30'18.4514"W	0.11	
10866.00	90.060	179.950	6665.06	3638.80	-3612.55	-567.11	40°15'3.4624"N	104°30'18.4574"W	0.67	
10960.00	89.820	181.480	6665.16	3732.71	-3706.54	-568.29	40°15'2.5338"N	104°30'18.4862"W	1.65	
11055.00	89.980	181.000	6665.33	3827.65	-3801.52	-570.34	40°15'1.5955"N	104°30'18.5264"W	0.53	
11150.00	90.130	181.070	6665.23	3922.58	-3896.50	-572.06	40°15'0.6571"N	104°30'18.5623"W	0.17	
11244.00	89.980	180.960	6665.14	4016.51	-3990.49	-573.72	40°14'59.7286"N	104°30'18.5974"W	0.20	
11339.00	90.230	180.110	6664.97	4111.40	-4085.48	-574.61	40°14'58.7900"N	104°30'18.6225"W	0.93	
11434.00	89.640	180.700	6665.08	4206.28	-4180.48	-575.28	40°14'57.8514"N	104°30'18.6449"W	0.88	
11528.00	90.230	181.000	6665.18	4300.20	-4274.47	-576.68	40°14'56.9228"N	104°30'18.6765"W	0.70	
11623.00	90.130	180.780	6664.89	4395.12	-4369.46	-578.15	40°14'55.9844"N	104°30'18.7093"W	0.25	

WELLPATH DATA (186 stations)

MD [ft]	Inclination [°]	Azimuth [°]	TVD [ft]	Vert Sect [ft]	North [ft]	East [ft]	Latitude	Longitude	DLS [°/100ft]	Comments
11717.00	89.950	181.350	6664.82	4489.05	-4463.44	-579.90	40°14'55.0559"N	104°30'18.7454"W	0.64	
11812.00	90.720	181.030	6664.27	4583.99	-4558.42	-581.87	40°14'54.1177"N	104°30'18.7846"W	0.88	
11906.00	89.580	179.540	6664.02	4677.86	-4652.41	-582.34	40°14'53.1889"N	104°30'18.8042"W	2.00	
12001.00	90.230	179.480	6664.18	4772.66	-4747.41	-581.53	40°14'52.2501"N	104°30'18.8075"W	0.69	
12095.00	90.010	179.700	6663.98	4866.47	-4841.41	-580.85	40°14'51.3213"N	104°30'18.8124"W	0.33	
12190.00	90.070	179.380	6663.91	4961.27	-4936.40	-580.09	40°14'50.3825"N	104°30'18.8163"W	0.34	
12284.00	90.290	179.810	6663.62	5055.08	-5030.40	-579.43	40°14'49.4536"N	104°30'18.8214"W	0.51	
12379.00	90.410	180.120	6663.04	5149.93	-5125.40	-579.37	40°14'48.5149"N	104°30'18.8344"W	0.35	
12473.00	90.470	179.930	6662.32	5243.78	-5219.39	-579.41	40°14'47.5861"N	104°30'18.8485"W	0.21	
12568.00	90.530	180.110	6661.49	5338.62	-5314.39	-579.44	40°14'46.6474"N	104°30'18.8627"W	0.20	
12662.00	90.290	180.140	6660.81	5432.48	-5408.39	-579.65	40°14'45.7186"N	104°30'18.8789"W	0.26	



Actual Wellpath Report

Guttersen D12-775 AWP
Page 5 of 7



REFERENCE WELLPATH IDENTIFICATION

Operator	NOBLE ENERGY, INC	Well	Guttersen D12-775
Field	WELD COUNTY (NOBLE NAD 83 GRID)	API	05-123-49080
Facility	SEC.01-T03N-R64W	Wellbore	Guttersen D12-775 AWB
Slot	SLOT#02 Guttersen D12-775 (316'FNL & 1640'FWL,SEC.01)		

WELLPATH DATA (186 stations)

MD [ft]	Inclination [°]	Azimuth [°]	TVD [ft]	Vert Sect [ft]	North [ft]	East [ft]	Latitude	Longitude	DLS [°/100ft]	Comments
12757.00	90.100	179.830	6660.49	5527.33	-5503.39	-579.62	40°14'44.7799"N	104°30'18.8923"W	0.38	
12851.00	90.130	179.350	6660.30	5621.14	-5597.38	-578.95	40°14'43.8510"N	104°30'18.8972"W	0.51	
12945.00	89.890	179.910	6660.29	5714.95	-5691.38	-578.34	40°14'42.9221"N	104°30'18.9030"W	0.65	
13040.00	90.040	179.610	6660.34	5809.78	-5786.38	-577.95	40°14'41.9834"N	104°30'18.9116"W	0.35	
13134.00	91.150	179.720	6659.37	5903.59	-5880.37	-577.40	40°14'41.0546"N	104°30'18.9181"W	1.19	
13229.00	89.890	179.320	6658.51	5998.38	-5975.36	-576.60	40°14'40.1158"N	104°30'18.9216"W	1.39	
13323.00	90.010	179.950	6658.59	6092.20	-6069.36	-576.00	40°14'39.1870"N	104°30'18.9275"W	0.68	
13418.00	89.640	179.930	6658.88	6187.04	-6164.36	-575.90	40°14'38.2482"N	104°30'18.9400"W	0.39	
13512.00	89.640	179.670	6659.47	6280.87	-6258.36	-575.57	40°14'37.3194"N	104°30'18.9493"W	0.28	
13607.00	89.490	179.490	6660.19	6375.67	-6353.35	-574.88	40°14'36.3806"N	104°30'18.9541"W	0.25	
13701.00	89.830	179.790	6660.75	6469.48	-6447.35	-574.29	40°14'35.4518"N	104°30'18.9601"W	0.48	
13796.00	89.830	180.160	6661.03	6564.33	-6542.35	-574.25	40°14'34.5130"N	104°30'18.9733"W	0.39	
13891.00	90.160	180.590	6661.04	6659.21	-6637.35	-574.87	40°14'33.5744"N	104°30'18.9950"W	0.57	
13985.00	90.470	179.280	6660.52	6753.05	-6731.34	-574.76	40°14'32.6456"N	104°30'19.0073"W	1.43	
14079.00	89.760	180.110	6660.33	6846.87	-6825.34	-574.26	40°14'31.7167"N	104°30'19.0144"W	1.16	
14174.00	90.320	179.900	6660.27	6941.72	-6920.34	-574.27	40°14'30.7780"N	104°30'19.0282"W	0.63	
14269.00	89.270	179.740	6660.61	7036.55	-7015.34	-573.97	40°14'29.8393"N	104°30'19.0381"W	1.12	
14363.00	89.490	179.520	6661.62	7130.36	-7109.33	-573.36	40°14'28.9104"N	104°30'19.0439"W	0.33	
14458.00	89.860	179.710	6662.16	7225.17	-7204.32	-572.72	40°14'27.9717"N	104°30'19.0494"W	0.44	
14552.00	90.380	180.540	6661.97	7319.03	-7298.32	-572.93	40°14'27.0429"N	104°30'19.0657"W	1.04	
14647.00	90.200	179.700	6661.48	7413.88	-7393.32	-573.13	40°14'26.1042"N	104°30'19.0820"W	0.90	
14741.00	90.350	179.700	6661.03	7507.70	-7487.32	-572.64	40°14'25.1753"N	104°30'19.0892"W	0.16	
14835.00	90.260	179.340	6660.53	7601.50	-7581.31	-571.85	40°14'24.2465"N	104°30'19.0927"W	0.39	
14930.00	90.840	179.050	6659.62	7696.26	-7676.30	-570.51	40°14'23.3077"N	104°30'19.0892"W	0.68	
15024.00	90.070	179.170	6658.87	7790.02	-7770.28	-569.05	40°14'22.3789"N	104°30'19.0840"W	0.83	
15119.00	90.660	178.870	6658.27	7884.76	-7865.27	-567.43	40°14'21.4401"N	104°30'19.0767"W	0.70	
15214.00	90.410	179.710	6657.38	7979.53	-7960.26	-566.25	40°14'20.5014"N	104°30'19.0753"W	0.92	
15308.00	90.320	179.620	6656.78	8073.34	-8054.25	-565.70	40°14'19.5725"N	104°30'19.0818"W	0.14	
15403.00	90.260	179.720	6656.30	8168.16	-8149.25	-565.16	40°14'18.6338"N	104°30'19.0885"W	0.12	
15497.00	90.040	179.250	6656.06	8261.95	-8243.24	-564.31	40°14'17.7049"N	104°30'19.0912"W	0.55	
15592.00	90.160	179.040	6655.89	8356.71	-8338.23	-562.89	40°14'16.7661"N	104°30'19.0867"W	0.25	
15686.00	90.010	178.760	6655.75	8450.44	-8432.22	-561.09	40°14'15.8372"N	104°30'19.0770"W	0.34	
15781.00	90.260	179.410	6655.53	8545.19	-8527.20	-559.57	40°14'14.8985"N	104°30'19.0712"W	0.73	
15875.00	90.010	179.280	6655.31	8638.98	-8621.20	-558.50	40°14'13.9696"N	104°30'19.0709"W	0.30	

WELLPATH DATA (186 stations)

MD [ft]	Inclination [°]	Azimuth [°]	TVD [ft]	Vert Sect [ft]	North [ft]	East [ft]	Latitude	Longitude	DLS [°/100ft]	Comments
15970.00	90.380	179.640	6654.98	8733.77	-8716.19	-557.60	40°14'13.0308"N	104°30'19.0731"W	0.54	
16064.00	91.180	179.840	6653.70	8827.58	-8810.18	-557.18	40°14'12.1020"N	104°30'19.0812"W	0.88	
16159.00	90.070	179.350	6652.67	8922.39	-8905.17	-556.50	40°14'11.1633"N	104°30'19.0863"W	1.28	
16253.00	90.040	179.380	6652.58	9016.17	-8999.17	-555.46	40°14'10.2344"N	104°30'19.0864"W	0.05	
16348.00	90.290	179.890	6652.30	9110.98	-9094.16	-554.86	40°14'9.2957"N	104°30'19.0924"W	0.60	
16443.00	90.290	179.960	6651.82	9205.82	-9189.16	-554.73	40°14'8.3569"N	104°30'19.1045"W	0.07	
16537.00	90.410	178.000	6651.25	9299.56	-9283.14	-553.06	40°14'7.4281"N	104°30'19.0965"W	2.09	
16631.00	90.470	176.690	6650.53	9393.06	-9377.03	-548.71	40°14'6.4998"N	104°30'19.0540"W	1.40	
16726.00	89.980	178.120	6650.15	9487.56	-9471.93	-544.40	40°14'5.5616"N	104°30'19.0123"W	1.59	
16820.00	90.470	179.790	6649.78	9581.30	-9565.91	-542.69	40°14'4.6328"N	104°30'19.0037"W	1.85	
16915.00	89.760	180.160	6649.59	9676.14	-9660.91	-542.65	40°14'3.6941"N	104°30'19.0169"W	0.84	

REFERENCE WELLPATH IDENTIFICATION

Operator	NOBLE ENERGY, INC	Well	Guttersen D12-775
Field	WELD COUNTY (NOBLE NAD 83 GRID)	API	05-123-49080
Facility	SEC.01-T03N-R64W	Wellbore	Guttersen D12-775 AWB
Slot	SLOT#02 Guttersen D12-775 (316'FNL & 1640'FWL,SEC.01)		

WELLPATH DATA (186 stations) † = interpolated, ‡ = extrapolated station

MD [ft]	Inclination [°]	Azimuth [°]	TVD [ft]	Vert Sect [ft]	North [ft]	East [ft]	Latitude	Longitude	DLS [°/100ft]	Comments
17010.00	90.010	182.160	6649.78	9771.07	-9755.89	-544.57	40°14'2.7558"N	104°30'19.0555"W	2.12	
17104.00	90.500	182.890	6649.37	9865.06	-9849.80	-548.71	40°14'1.8284"N	104°30'19.1225"W	0.94	
17199.00	90.530	182.170	6648.51	9960.05	-9944.70	-552.91	40°14'0.8911"N	104°30'19.1902"W	0.76	
17293.00	90.380	183.310	6647.76	10054.04	-10038.59	-557.40	40°13'59.9638"N	104°30'19.2618"W	1.22	
17353.00	90.960	182.700	6647.06	10114.04	-10098.50	-560.54	40°13'59.3721"N	104°30'19.3110"W	1.40	Last BH MWD Survey
17377.00‡	90.960	182.700	6646.66	10138.03	-10122.47	-561.67	40°13'59.1354"N	104°30'19.3290"W	0.00	Projection to Bit

TARGETS

Name	TVD [ft]	North [ft]	East [ft]	Grid East [US ft]	Grid North [US ft]	Latitude	Longitude	Shape
GUTTERSEN D12-785 SECTION 1	0.00	-0.25	-22.33	3278230.49	1339436.93	40°15'39.0960"N	104°30'10.9080"W	polygon
	2D Polygon: dimensions not calculated							
GUTTERSEN D12-785 SECTION 12	0.00	-0.25	-22.33	3278230.49	1339436.93	40°15'39.0960"N	104°30'10.9080"W	polygon
	2D Polygon: dimensions not calculated							
Guttersen D12-775 BHL PLAN (200'FSL & 1001'FWL,SEC.12)	6649.00	-10123.57	-572.27	3277680.57	1329314.07	40°13'59.1257"N	104°30'19.4658"W	point
Guttersen D12-775 AC Inflection Point	6651.30	-9327.57	-561.59	3277691.25	1330110.03	40°14'6.9900"N	104°30'19.2130"W	point
Guttersen D12-775 LP PLAN/ LP (200'FNL & 1047'FWL,SEC.01)	6663.00	110.41	-593.27	3277659.57	1339547.59	40°15'40.2528"N	104°30'18.2560"W	point
Guttersen D12-775 VS TARGET from plan	6663.00	-5275.41	-575.20	3277677.64	1334162.01	40°14'47.0321"N	104°30'18.8023"W	point

WELLPATH COMPOSITION - Ref Wellbore: Guttersen D12-775 AWB Ref Wellpath: Guttersen D12-775 AWP

Start MD [ft]	End MD [ft]	Positional Uncertainty Model	Log Name/Comment	Wellbore	Survey Date
0.00	1913.00	Gyrodatta 2015 - GC+DROP+COND	Gyrodatta Surface Surveys <80'-1913'>	Guttersen D12-775 AWB	4/21/2022
1913.00	17377.00	OWSG MWD rev2 (MS+IFR1)	8.5" AT-Curve Pro MWD+IFR+MS <1983'- 17353'>	Guttersen D12-775 AWB	4/27/2022



Actual Wellpath Report

Guttersen D12-775 AWP

Page 7 of 7



REFERENCE WELLPATH IDENTIFICATION

Operator	NOBLE ENERGY, INC	Well	Guttersen D12-775
Field	WELD COUNTY (NOBLE NAD 83 GRID)	API	05-123-49080
Facility	SEC.01-T03N-R64W	Wellbore	Guttersen D12-775 AWB
Slot	SLOT#02 Guttersen D12-775 (316'FNL & 1640'FWL,SEC.01)		

WELLPATH COMMENTS

MD [ft]	Inclination [°]	Azimuth [°]	TVD [ft]	Comment
1913.00	0.210	2.660	1912.85	Gyrodatta Gyro
1983.00	0.290	255.200	1982.85	First BH MWD Survey
17353.00	90.960	182.700	6647.06	Last BH MWD Survey
17377.00	90.960	182.700	6646.66	Projection to Bit