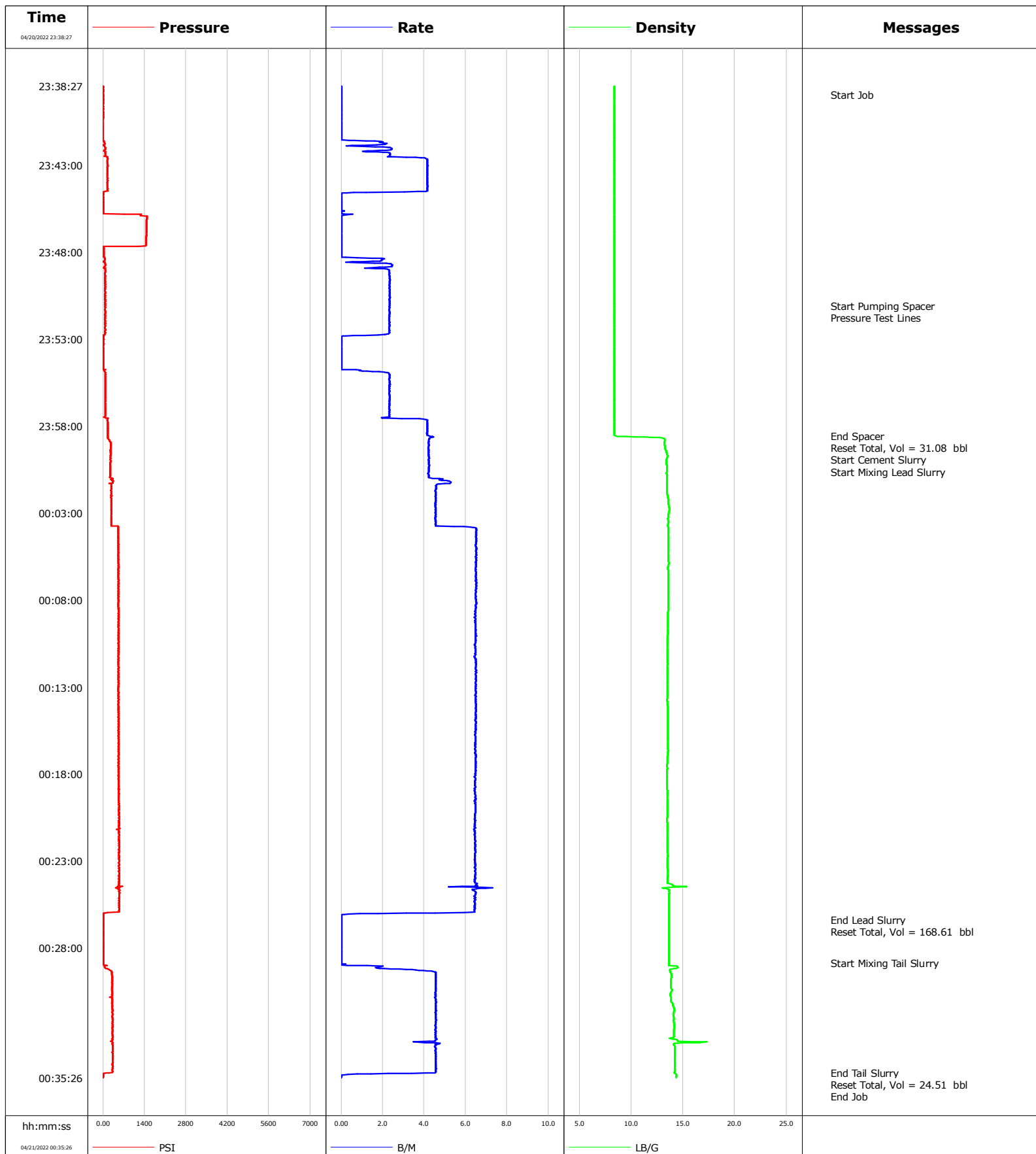


Well Guttersen d-12 785
Field DJ
Engineer Norm Haslauer
Country United States

Client Chevron
SIR No. 58421
Job Type Surface
Job Date 04-20-2022



Cementing Service Report

				Customer Chevron				Job Number 58421							
Well Guttersen d-12 785			Location (legal)			Schlumberger Location			Job Start Apr/20/2022						
Field DJ		Formation Name/Type			Deviation deg		Bit Size in		Well MD 1954.0 ft		Well TVD 1954.0 ft				
County weld		State/Province Colorado			BHP psi		BHST 121 degF		BHCT 96 degF		Pore Press. Gradient lb/gal				
Well Master 0064756505		API/UWI 05-12349069-00-00													
Rig Name hp57		Drilled For Oil		Service Via Land		Casing/ Liner									
						Depth, ft		Size, in		Weight, lb/ft		Grade	Thread		
Offshore Zone		Well Class New		Well Type Development		110.0		16.0		36.94		A-52A			
						1944.0		9.6		36.00		J-55			
Drilling Fluid Type		Max. Density lb/gal		Plastic Viscosity cP		Tubing/Drill Pipe									
						T/D		Depth, ft		Size, in		Weight, lb/ft		Grade	Thread
Service Line Cementing		Job Type Surface													
Max. Allowed Tub. Press psi		Max. Allowed Ann. Press psi		WH Connection Single Cement head		Perforations/Open Hole									
						Top, ft		Bottom, ft		shot/ft		No. of Shots		Total Interval	
Service Instructions Provide products and services for offline cementing 9 5/8" surface casing. Schlumberger services include all engineering support necessary to ensure quality service delivery. Pump 168 bbls Lead @ 567 sks Pump 24 bbls Tail @ 101 sks						ft		ft						ft	
						ft		ft						Diameter	
						ft		ft						in	
		Treat Down Casing		Displacement 146.8 bbl		Packer Type		Packer Depth ft							
		Tubing Vol. bbl		Casing Vol. 150.0 bbl		Annular Vol. bbl		Openhole Vol. bbl							
Casing/Tubing Secured <input checked="" type="checkbox"/>		1 Hole Vol. Circulated prior to Cement <input checked="" type="checkbox"/>				Casing Tools				Squeeze Job					
Lift Pressure 440 psi						Shoe Type Float				Squeeze Type					
Pipe Rotated <input type="checkbox"/>		Pipe Reciprocated <input type="checkbox"/>				Shoe Depth 1942.0 ft				Tool Type					
No. Centralizers		Top Plugs 1		Bottom Plugs		Stage Tool Type				Tool Depth ft					
Cement Head Type						Stage Tool Depth ft				Tail Pipe Size in					
Job Scheduled For Apr/20/2022		Arrived on Location Apr/20/2022		Leave Location Apr/20/2022		Collar Type Float				Tail Pipe Depth ft					
						Collar Depth 1898.0 ft				Sqz. Total Vol. bbl					
Date	Time 24-hr clock	Treating Pressure PSI	Flow Rate B/M	Density LB/G	Volume BBL	Message									
04/20/2022	23:38:27	1	0.0	8.38	0.0	Started Acquisition									
04/20/2022	23:38:57	1	0.0	8.38	0.0	Start Job									
04/20/2022	23:40:06	0	0.0	8.38	0.0										
04/20/2022	23:41:45	60	2.2	8.38	0.3										
04/20/2022	23:43:24	147	4.1	8.38	5.4										
04/20/2022	23:45:03	12	0.0	8.38	10.2										
04/20/2022	23:46:42	1464	0.0	8.37	10.2										
04/20/2022	23:48:21	60	1.5	8.37	10.3										
04/20/2022	23:50:00	68	2.3	8.37	13.8										
04/20/2022	23:51:06	68	2.3	8.37	16.4	Start Pumping Spacer									
04/20/2022	23:51:09	68	2.3	8.37	16.5	Pressure Test Lines									
04/20/2022	23:51:39	67	2.3	8.37	17.7										
04/20/2022	23:53:18	17	0.0	8.37	20.3										
04/20/2022	23:54:57	71	2.3	8.37	20.6										
04/20/2022	23:56:36	70	2.3	8.37	24.4										
04/20/2022	23:58:15	155	4.1	8.37	29.5										
04/20/2022	23:58:34	157	4.2	8.52	30.8	End Spacer									
04/20/2022	23:58:38	154	4.4	11.23	31.1	Reset Total, Vol = 31.08 bbl									
04/20/2022	23:58:39	159	4.4	12.04	0.1	Start Cement Slurry									
04/20/2022	23:58:42	167	4.2	13.10	0.3	Start Mixing Lead Slurry									
04/21/2022	00:01:33	279	4.6	13.44	12.7										

Well			Field		Job Start	Customer		Job Number
Guttersen d-12 785			DJ		Apr/20/2022	Chevron		58421
Date	Time 24-hr clock	Treating Pressure PSI	Flow Rate B/M	Density LB/G	Volume BBL	Message		
04/21/2022	00:04:51	518	6.5	13.60	29.8			
04/21/2022	00:06:30	516	6.5	13.57	40.5			
04/21/2022	00:08:09	516	6.5	13.60	51.3			
04/21/2022	00:09:48	533	6.5	13.53	61.9			
04/21/2022	00:11:27	520	6.5	13.47	72.6			
04/21/2022	00:13:06	513	6.5	13.49	83.3			
04/21/2022	00:14:45	517	6.5	13.55	94.0			
04/21/2022	00:16:24	530	6.5	13.54	104.7			
04/21/2022	00:18:03	518	6.5	13.44	115.4			
04/21/2022	00:19:42	540	6.5	13.49	126.0			
04/21/2022	00:21:21	541	6.4	13.48	136.7			
04/21/2022	00:23:00	548	6.5	13.50	147.3			
04/21/2022	00:24:39	541	6.3	13.68	158.0			
04/21/2022	00:26:18	8	0.0	13.63	166.6			
04/21/2022	00:26:21	7	0.0	13.63	166.6	End Lead Slurry		
04/21/2022	00:26:22	7	0.0	13.63	166.6	Reset Total, Vol = 168.61 bbl		
04/21/2022	00:27:57	5	0.0	13.63	0.0			
04/21/2022	00:28:51	6	0.0	13.64	0.0	Start Mixing Tail Slurry		
04/21/2022	00:29:36	305	4.6	13.87	2.1			
04/21/2022	00:31:15	305	4.6	14.03	9.6			
04/21/2022	00:32:54	317	4.6	14.12	17.2			
04/21/2022	00:34:33	329	4.6	14.20	24.6			
04/21/2022	00:35:08	323	4.6	14.19	27.3	End Tail Slurry		
04/21/2022	00:35:11	41	3.4	14.19	27.5	Reset Total, Vol = 24.51 bbl		
04/21/2022	00:35:17	9	0.1	14.36	0.1	End Job		

Post Job Summary

Average Pump Rates, bbl/min					Volume of Fluid Injected, bbl					
Slurry 4.9	N2	Mud	Maximum Rate 18.1		Total Slurry 192.0	Mud 0.0	Spacer 30.0	N2		
Treating Pressure Summary, psi					Breakdown Fluid					
Maximum 1493	Final 9	Average 341	Bump Plug to 1030	Breakdown	Type	Volume bbl	Density lb/gal			
Avg. N2 Percent %		Designed Slurry Volume 192.0 bbl		Displacement 146.0 bbl		Cement Circulated to Surface? <input checked="" type="checkbox"/>		Volume 30.0 bbl		
						Washed Thru Perfs <input type="checkbox"/>		To ft		
Customer or Authorized Representative Jim Turner			Schlumberger Supervisor Norm Haslauer			Circulation Lost <input type="checkbox"/>		Job Completed <input checked="" type="checkbox"/>		
						-		-		