

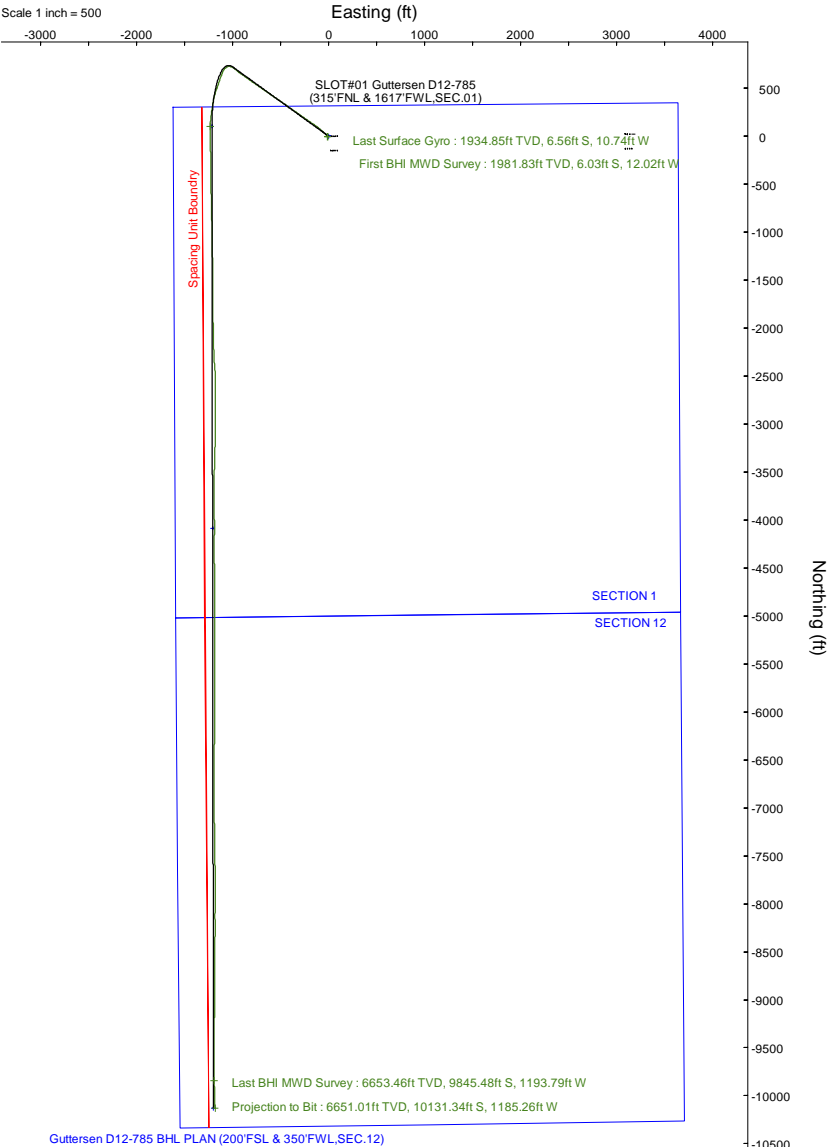
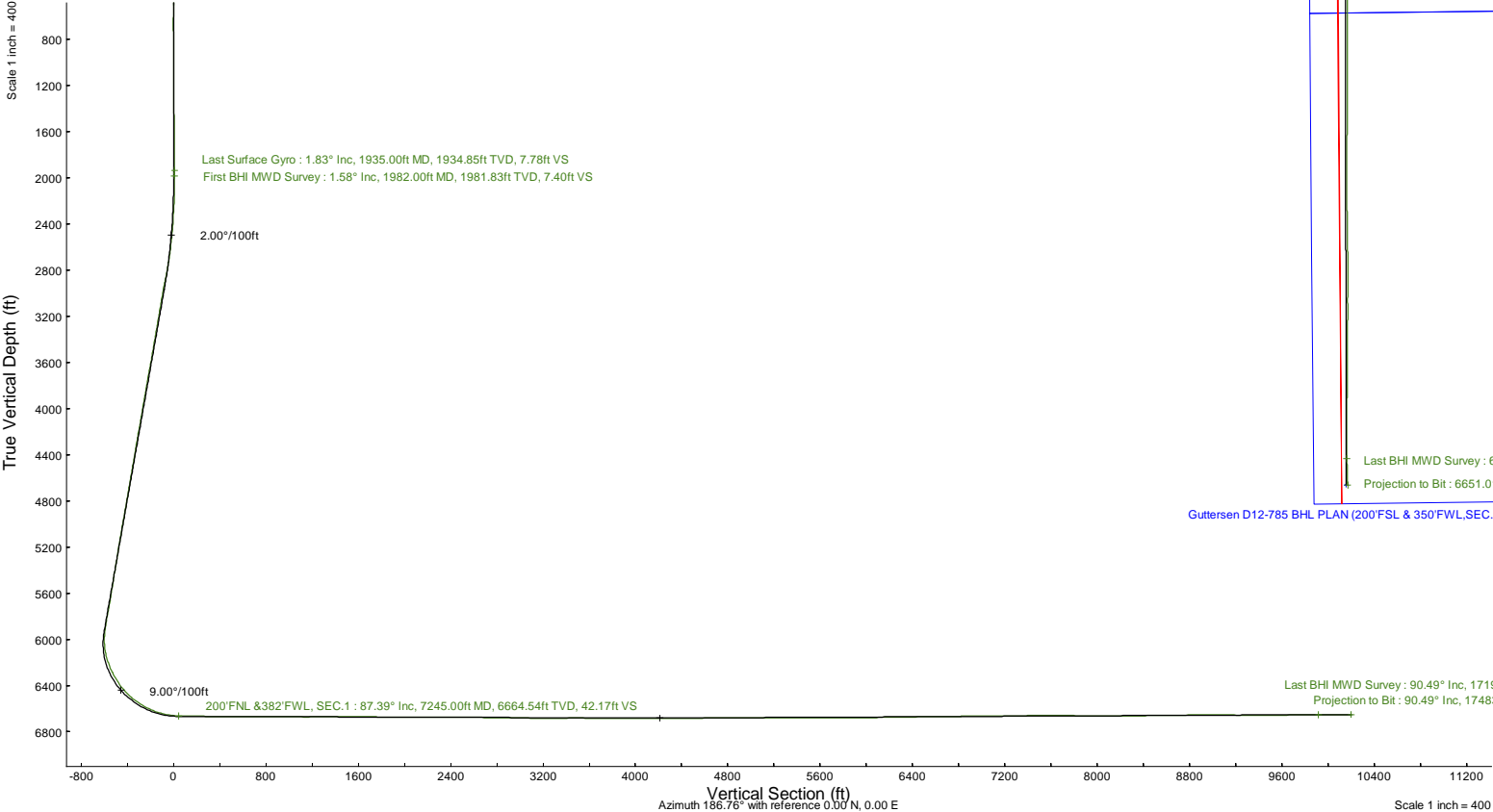
NOBLE ENERGY, INC



Location:	COLORADO	Slot:	SLOT#01 GutterSEN D12-785 (315°FNL & 1617°FWL, SEC.01)
Field:	WELD COUNTY (NOBLE NAD 83 GRID)	Well:	GUTTERSEN D12-785
Facility:	SEC.01-T03N-R64W	Wellbore:	GUTTERSEN D12-785 PWB

Plot reference wellpath is GUTTERSEN D12-785 (REV-B.0) PWP	Grid System: NAD83 / Lambert Colorado SP, Northern Zone (501), US feet
True vertical depths are referenced to (4745'GL+30'KB@4775'RKB) (RKB)	North Reference: Grid north
Reference wellpath measured depths are referenced to (4745'GL+30'KB@4775'RKB) (RKB)	Scale: True distance
(4745'GL+30'KB@4775'RKB) (RKB) to Mean Sea Level: 4775 feet	Coordinates are in feet referenced to Slot
Mean Sea Level to Ground level (At Slot: SLOT#01 GutterSEN D12-785 (315°FNL & 1617°FWL, SEC.01)): 0 feet	Depths are in feet
Offset wellpath MDs are referenced to each path's default MD datum	Created by: guenaler on 2022-06-02; Database: WA_Denver

Location Information						
Facility Name			Grid East (US ft)	Grid North (US ft)	Latitude	Longitude
SEC.01-T03N-R64W			3278229.920	1339437.650	40°15'39.1032"N	104°30'10.9152"W
Slot	Local N (ft)	Local E (ft)	Grid East (US ft)	Grid North (US ft)	Latitude	Longitude
SLOT#01 GutterSEN D12-785 (315°FNL & 1617°FWL,SEC.01)	-0.72	0.57	3278230.487	1339436.931	40°15'39.0960"N	104°30'10.9080"W
(4745'GL+30'KB@4775'RKB) (RKB) to Ground level (At Slot: SLOT#01 GutterSEN D12-785 (315°FNL & 1617°FWL, SEC.01))					4775ft	
Mean Sea Level to Ground level (At Slot: SLOT#01 GutterSEN D12-785 (315°FNL & 1617°FWL, SEC.01))					0ft	
(4745'GL+30'KB@4775'RKB) (RKB) to Mean Sea Level					4775ft	





Actual Wellpath Report

GUTTERSEN D12-785 AWP

Page 1 of 7



REFERENCE WELLPATH IDENTIFICATION

Operator	NOBLE ENERGY, INC	Well	GUTTERSEN D12-785
Field	WELD COUNTY (NOBLE NAD 83 GRID)	API	05-123-49069
Facility	SEC.01-T03N-R64W	Wellbore	GUTTERSEN D12-785 AWB
Slot	SLOT#01 Gutteresen D12-785 (315'FNL & 1617'FWL,SEC.01)		

REPORT SETUP INFORMATION

Projection System	NAD83 / Lambert Colorado SP, Northern Zone (501), US feet	Software System	WellArchitect® 6.0
North Reference	Grid	User	Guenaler
Scale	0.999957	Report Generated	6/2/2022 at 3:52:22 PM
Convergence at slot	0.64° East	Database	WA_Denver

WELLPATH LOCATION

	Local coordinates		Grid coordinates		Geographic coordinates	
	North[ft]	East[ft]	Easting[US ft]	Northing[US ft]	Latitude	Longitude
Slot Location	-0.72	0.57	3278230.49	1339436.93	40°15'39.0960"N	104°30'10.9080"W
Facility Reference Pt			3278229.92	1339437.65	40°15'39.1032"N	104°30'10.9152"W
Field Reference Pt			3000000.00	4454105.15	48°46'34.3150"N	105°30'0.0000"W

WELLPATH DATUM

Calculation method	Minimum curvature	(4745'GL+30'KB@4775'RKB) (RKB) to Facility Vertical Datum	4775.00ft
Horizontal Reference Pt	Slot	(4745'GL+30'KB@4775'RKB) (RKB) to Mean Sea Level	4775.00ft
Vertical Reference Pt	(4745'GL+30'KB@4775'RKB) (RKB)	(4745'GL+30'KB@4775'RKB) (RKB) to Ground Level at Slot (SLOT#01 Gutteresen D12-785 (315'FNL & 1617'FWL,SEC.01))	4775.00ft
MD Reference Pt	(4745'GL+30'KB@4775'RKB) (RKB)	Section Origin	N 0.00, E 0.00 ft
Field Vertical Reference	Mean Sea Level	Section Azimuth	186.76°



Actual Wellpath Report

GUTTERSEN D12-785 AWP
Page 2 of 7



REFERENCE WELLPATH IDENTIFICATION

Operator	NOBLE ENERGY, INC	Well	GUTTERSEN D12-785
Field	WELD COUNTY (NOBLE NAD 83 GRID)	API	05-123-49069
Facility	SEC.01-T03N-R64W	Wellbore	GUTTERSEN D12-785 AWB
Slot	SLOT#01 Gutteresen D12-785 (315'FNL & 1617'FWL,SEC.01)		

WELLPATH DATA (181 stations)

MD [ft]	Inclination [°]	Azimuth [°]	TVD [ft]	Vert Sect [ft]	North [ft]	East [ft]	Latitude	Longitude	DLS [°/100ft]	Comments
0.00	0.000	335.260	0.00	0.00	0.00	0.00	40°15'39.0960"N	104°30'10.9080"W	0.00	
80.00	0.240	335.260	80.00	-0.14	0.15	-0.07	40°15'39.0975"N	104°30'10.9089"W	0.30	
173.00	0.610	53.010	173.00	-0.65	0.63	0.24	40°15'39.1022"N	104°30'10.9048"W	0.65	
263.00	0.320	39.380	262.99	-1.19	1.11	0.79	40°15'39.1069"N	104°30'10.8977"W	0.34	
358.00	0.100	329.400	357.99	-1.48	1.39	0.91	40°15'39.1096"N	104°30'10.8960"W	0.32	
452.00	0.300	21.400	451.99	-1.79	1.69	0.96	40°15'39.1125"N	104°30'10.8954"W	0.27	
547.00	0.230	350.280	546.99	-2.21	2.11	1.02	40°15'39.1167"N	104°30'10.8946"W	0.17	
641.00	0.110	323.250	640.99	-2.46	2.36	0.93	40°15'39.1192"N	104°30'10.8956"W	0.15	
735.00	0.180	182.680	734.99	-2.37	2.29	0.87	40°15'39.1185"N	104°30'10.8964"W	0.29	
830.00	0.370	245.030	829.99	-2.06	2.01	0.59	40°15'39.1158"N	104°30'10.9001"W	0.35	
924.00	0.350	264.290	923.99	-1.84	1.85	0.03	40°15'39.1143"N	104°30'10.9074"W	0.13	
1018.00	0.380	237.010	1017.99	-1.58	1.65	-0.52	40°15'39.1124"N	104°30'10.9145"W	0.19	
1113.00	0.380	187.830	1112.99	-1.07	1.17	-0.83	40°15'39.1077"N	104°30'10.9185"W	0.33	
1207.00	0.660	198.100	1206.98	-0.22	0.35	-1.04	40°15'39.0996"N	104°30'10.9213"W	0.31	
1301.00	0.980	215.230	1300.97	1.01	-0.82	-1.67	40°15'39.0880"N	104°30'10.9297"W	0.43	
1396.00	0.740	214.460	1395.96	2.27	-1.99	-2.49	40°15'39.0766"N	104°30'10.9404"W	0.25	
1490.00	0.950	208.320	1489.95	3.53	-3.18	-3.20	40°15'39.0649"N	104°30'10.9497"W	0.24	
1584.00	1.080	220.720	1583.94	4.99	-4.54	-4.15	40°15'39.0516"N	104°30'10.9622"W	0.27	
1679.00	0.940	234.070	1678.92	6.26	-5.67	-5.36	40°15'39.0405"N	104°30'10.9780"W	0.29	
1773.00	1.180	241.240	1772.91	7.35	-6.59	-6.84	40°15'39.0316"N	104°30'10.9971"W	0.29	
1867.00	1.430	275.800	1866.88	7.93	-6.94	-8.85	40°15'39.0284"N	104°30'11.0232"W	0.86	
1935.00	1.830	285.770	1934.85	7.78	-6.56	-10.74	40°15'39.0324"N	104°30'11.0475"W	0.72	Last Surface Gyro
1982.00	1.580	300.010	1981.83	7.40	-6.03	-12.02	40°15'39.0378"N	104°30'11.0639"W	1.04	First BHI MWD Survey
2076.00	0.120	239.420	2075.82	6.95	-5.43	-13.23	40°15'39.0438"N	104°30'11.0794"W	1.62	
2171.00	2.080	46.320	2170.80	5.68	-4.29	-12.07	40°15'39.0549"N	104°30'11.0643"W	2.31	
2266.00	5.150	343.970	2265.63	0.42	1.00	-12.00	40°15'39.1072"N	104°30'11.0626"W	4.81	
2360.00	4.640	306.880	2359.31	-5.38	7.34	-16.21	40°15'39.1703"N	104°30'11.1160"W	3.35	
2455.00	8.060	316.150	2453.71	-11.54	14.45	-23.90	40°15'39.2414"N	104°30'11.2141"W	3.75	
2549.00	10.760	310.330	2546.44	-20.57	24.88	-35.15	40°15'39.3458"N	104°30'11.3578"W	3.04	
2644.00	13.520	310.750	2639.31	-31.68	37.87	-50.33	40°15'39.4758"N	104°30'11.5517"W	2.91	
2738.00	15.680	310.360	2730.27	-44.86	53.27	-68.33	40°15'39.6300"N	104°30'11.7817"W	2.30	
2833.00	18.380	310.950	2821.10	-60.38	71.41	-89.43	40°15'39.8115"N	104°30'12.0512"W	2.85	
2927.00	20.980	310.280	2909.60	-78.00	92.00	-113.47	40°15'40.0177"N	104°30'12.3582"W	2.78	
3021.00	20.000	304.880	2997.66	-94.87	112.08	-139.50	40°15'40.2190"N	104°30'12.6910"W	2.26	

WELLPATH DATA (181 stations)

MD [ft]	Inclination [°]	Azimuth [°]	TVD [ft]	Vert Sect [ft]	North [ft]	East [ft]	Latitude	Longitude	DLS [°/100ft]	Comments
3116.00	20.450	302.700	3086.80	-109.79	130.33	-166.79	40°15'40.4024"N	104°30'13.0404"W	0.92	
3210.00	19.720	306.680	3175.09	-124.88	148.68	-193.33	40°15'40.5866"N	104°30'13.3800"W	1.65	
3305.00	20.110	303.890	3264.41	-140.33	167.36	-219.74	40°15'40.7741"N	104°30'13.7180"W	1.08	
3399.00	20.000	304.180	3352.71	-155.10	185.40	-246.45	40°15'40.9554"N	104°30'14.0599"W	0.16	
3493.00	20.240	304.140	3440.97	-169.98	203.56	-273.21	40°15'41.1378"N	104°30'14.4024"W	0.26	
3588.00	20.350	306.100	3530.08	-185.63	222.51	-300.16	40°15'41.3280"N	104°30'14.7472"W	0.72	
3682.00	20.410	305.970	3618.19	-201.63	241.77	-326.63	40°15'41.5213"N	104°30'15.0859"W	0.08	
3777.00	20.490	305.220	3707.20	-217.64	261.09	-353.62	40°15'41.7152"N	104°30'15.4312"W	0.29	
3871.00	20.380	304.800	3795.29	-233.17	279.92	-380.50	40°15'41.9042"N	104°30'15.7752"W	0.20	
3966.00	20.300	304.460	3884.36	-248.61	298.68	-407.67	40°15'42.0926"N	104°30'16.1229"W	0.15	
4060.00	20.200	305.380	3972.56	-263.96	317.31	-434.35	40°15'42.2796"N	104°30'16.4643"W	0.36	



Actual Wellpath Report

GUTTERSEN D12-785 AWP
Page 3 of 7



REFERENCE WELLPATH IDENTIFICATION

Operator	NOBLE ENERGY, INC	Well	GUTTERSEN D12-785
Field	WELD COUNTY (NOBLE NAD 83 GRID)	API	05-123-49069
Facility	SEC.01-T03N-R64W	Wellbore	GUTTERSEN D12-785 AWB
Slot	SLOT#01 Gutteresen D12-785 (315'FNL & 1617'FWL,SEC.01)		

WELLPATH DATA (181 stations) † = interpolated, ‡ = extrapolated station

MD [ft]	Inclination [°]	Azimuth [°]	TVD [ft]	Vert Sect [ft]	North [ft]	East [ft]	Latitude	Longitude	DLS [°/100ft]	Comments
4155.00	20.220	304.450	4061.71	-279.45	336.09	-461.26	40°15'42.4682"N	104°30'16.8087"W	0.34	
4249.00	20.410	305.510	4149.86	-294.88	354.80	-488.00	40°15'42.6560"N	104°30'17.1508"W	0.44	
4344.00	20.480	304.130	4238.88	-310.49	373.75	-515.24	40°15'42.8463"N	104°30'17.4994"W	0.51	
4439.00	20.450	303.500	4327.88	-325.59	392.23	-542.83	40°15'43.0320"N	104°30'17.8527"W	0.23	
4533.00	20.290	304.700	4416.00	-340.62	410.57	-569.93	40°15'43.2162"N	104°30'18.1995"W	0.48	
4628.00	20.260	305.470	4505.12	-356.24	429.50	-596.86	40°15'43.4062"N	104°30'18.5442"W	0.28	
4722.00	20.000	304.510	4593.37	-371.54	448.05	-623.36	40°15'43.5924"N	104°30'18.8834"W	0.45	
4817.00	20.420	304.420	4682.53	-386.80	466.62	-650.42	40°15'43.7790"N	104°30'19.2297"W	0.44	
4911.00	19.970	303.950	4770.75	-401.74	484.85	-677.27	40°15'43.9621"N	104°30'19.5733"W	0.51	
5006.00	20.590	304.730	4859.86	-416.99	503.43	-704.45	40°15'44.1487"N	104°30'19.9212"W	0.71	
5100.00	20.630	305.020	4947.84	-432.58	522.35	-731.60	40°15'44.3386"N	104°30'20.2686"W	0.12	
5195.00	20.120	304.950	5036.90	-448.22	541.31	-758.70	40°15'44.5290"N	104°30'20.6154"W	0.54	
5290.00	19.730	304.610	5126.21	-463.43	559.78	-785.29	40°15'44.7145"N	104°30'20.9557"W	0.43	
5384.00	19.420	305.220	5214.78	-478.29	577.81	-811.11	40°15'44.8954"N	104°30'21.2862"W	0.40	
5479.00	18.330	305.840	5304.67	-493.08	595.66	-836.13	40°15'45.0746"N	104°30'21.6063"W	1.17	
5668.00	18.880	305.240	5483.79	-522.10	630.71	-885.19	40°15'45.4264"N	104°30'22.2341"W	0.31	
5857.00	17.910	306.980	5663.13	-551.31	665.83	-933.38	40°15'45.7788"N	104°30'22.8506"W	0.59	
5951.00	19.410	309.930	5752.19	-567.13	684.56	-956.91	40°15'45.9664"N	104°30'23.1513"W	1.88	
6046.00	18.770	306.400	5841.97	-583.33	703.76	-981.32	40°15'46.1588"N	104°30'23.4634"W	1.39	
6141.00	18.380	297.510	5932.04	-596.19	719.75	-1006.91	40°15'46.3197"N	104°30'23.7912"W	3.01	
6235.00	18.140	272.200	6021.44	-600.29	727.17	-1034.72	40°15'46.3961"N	104°30'24.1488"W	8.38	
6330.00	18.570	244.360	6111.78	-590.99	721.18	-1063.19	40°15'46.3400"N	104°30'24.5169"W	9.16	
6424.00	22.240	217.290	6200.07	-567.58	700.50	-1087.52	40°15'46.1384"N	104°30'24.8337"W	10.66	
6519.00	27.500	203.160	6286.30	-531.00	665.97	-1107.07	40°15'45.7994"N	104°30'25.0909"W	8.32	
6613.00	33.590	199.720	6367.23	-484.79	621.50	-1124.40	40°15'45.3618"N	104°30'25.3208"W	6.74	
6707.00	42.300	199.620	6441.28	-428.51	567.12	-1143.83	40°15'44.8267"N	104°30'25.5793"W	9.27	
6802.00	49.610	197.620	6507.29	-361.71	502.44	-1165.55	40°15'44.1899"N	104°30'25.8687"W	7.84	
6896.00	58.160	195.580	6562.64	-286.96	429.72	-1187.15	40°15'43.4738"N	104°30'26.1579"W	9.26	
6991.00	66.900	191.460	6606.44	-203.35	347.84	-1206.71	40°15'42.6669"N	104°30'26.4220"W	9.97	
7086.00	73.100	187.160	6638.93	-114.23	259.80	-1221.08	40°15'41.7985"N	104°30'26.6200"W	7.79	
7180.00	82.470	185.920	6658.80	-22.47	168.63	-1231.51	40°15'40.8988"N	104°30'26.7678"W	10.05	
7245.00†	87.386	182.045	6664.54	42.17	104.07	-1236.00	40°15'40.2614"N	104°30'26.8349"W	9.61	200'FNL & 382'FWL, SEC.1
7275.00	89.660	180.270	6665.32	72.02	74.09	-1236.60	40°15'39.9652"N	104°30'26.8471"W	9.61	
7369.00	89.570	179.120	6665.95	165.30	-19.90	-1236.10	40°15'39.0364"N	104°30'26.8542"W	1.23	

WELLPATH DATA (181 stations) † = interpolated, ‡ = extrapolated station										
MD [ft]	Inclination [°]	Azimuth [°]	TVD [ft]	Vert Sect [ft]	North [ft]	East [ft]	Latitude	Longitude	DLS [°/100ft]	Comments
7464.00	89.570	178.120	6666.66	259.34	-114.87	-1233.82	40°15'38.0977"N	104°30'26.8384"W	1.05	
7558.00	89.750	178.130	6667.22	352.27	-208.82	-1230.74	40°15'37.1690"N	104°30'26.8123"W	0.19	
7653.00	90.030	179.960	6667.40	446.40	-303.80	-1229.16	40°15'36.2303"N	104°30'26.8056"W	1.95	
7747.00	89.510	180.030	6667.78	539.75	-397.80	-1229.15	40°15'35.3015"N	104°30'26.8191"W	0.56	
7842.00	89.540	178.180	6668.57	633.89	-492.78	-1227.67	40°15'34.3628"N	104°30'26.8136"W	1.95	
7936.00	90.740	179.230	6668.34	726.96	-586.75	-1225.54	40°15'33.4340"N	104°30'26.7998"W	1.70	
8030.00	88.430	179.140	6669.02	820.13	-680.74	-1224.20	40°15'32.5052"N	104°30'26.7961"W	2.46	
8125.00	90.710	178.710	6669.73	914.24	-775.71	-1222.42	40°15'31.5665"N	104°30'26.7868"W	2.44	
8219.00	89.230	177.640	6669.78	1007.18	-869.66	-1219.43	40°15'30.6379"N	104°30'26.7618"W	1.94	
8314.00	88.490	179.440	6671.67	1101.18	-964.60	-1217.01	40°15'29.6994"N	104°30'26.7443"W	2.05	
8409.00	91.510	181.100	6671.67	1195.56	-1059.59	-1217.46	40°15'28.7609"N	104°30'26.7638"W	3.63	



Actual Wellpath Report

GUTTERSEN D12-785 AWP

Page 4 of 7



REFERENCE WELLPATH IDENTIFICATION

Operator	NOBLE ENERGY, INC	Well	GUTTERSEN D12-785
Field	WELD COUNTY (NOBLE NAD 83 GRID)	API	05-123-49069
Facility	SEC.01-T03N-R64W	Wellbore	GUTTERSEN D12-785 AWB
Slot	SLOT#01 Gutteresen D12-785 (315'FNL & 1617'FWL,SEC.01)		

WELLPATH DATA (181 stations)

MD [ft]	Inclination [°]	Azimuth [°]	TVD [ft]	Vert Sect [ft]	North [ft]	East [ft]	Latitude	Longitude	DLS [°/100ft]	Comments
8503.00	91.140	177.260	6669.49	1288.69	-1153.54	-1216.11	40°15'27.8324"N	104°30'26.7600"W	4.10	
8598.00	89.290	178.460	6669.14	1382.54	-1248.46	-1212.56	40°15'26.8940"N	104°30'26.7280"W	2.32	
8692.00	89.320	179.520	6670.28	1475.67	-1342.44	-1210.91	40°15'25.9652"N	104°30'26.7202"W	1.13	
8786.00	89.660	179.530	6671.12	1568.92	-1436.43	-1210.13	40°15'25.0364"N	104°30'26.7237"W	0.36	
8881.00	89.780	179.530	6671.58	1663.16	-1531.43	-1209.35	40°15'24.0976"N	104°30'26.7273"W	0.13	
8975.00	89.720	179.690	6671.99	1756.43	-1625.43	-1208.71	40°15'23.1687"N	104°30'26.7327"W	0.18	
9164.00	88.950	179.440	6674.18	1943.93	-1814.41	-1207.27	40°15'21.3012"N	104°30'26.7414"W	0.43	
9259.00	89.820	178.860	6675.20	2038.08	-1909.39	-1205.86	40°15'20.3625"N	104°30'26.7370"W	1.10	
9353.00	91.320	179.660	6674.27	2131.27	-2003.37	-1204.65	40°15'19.4337"N	104°30'26.7349"W	1.81	
9447.00	88.830	176.520	6674.14	2224.18	-2097.30	-1201.52	40°15'18.5052"N	104°30'26.7080"W	4.26	
9542.00	90.430	180.320	6674.76	2318.15	-2192.24	-1198.90	40°15'17.5668"N	104°30'26.6880"W	4.34	
9637.00	90.490	176.780	6674.00	2412.16	-2287.19	-1196.50	40°15'16.6283"N	104°30'26.6707"W	3.73	
9731.00	89.320	175.240	6674.15	2504.50	-2380.96	-1189.96	40°15'15.7010"N	104°30'26.5999"W	2.06	
9828.00	88.520	177.050	6675.98	2599.82	-2477.72	-1183.44	40°15'14.7442"N	104°30'26.5298"W	2.04	
9920.00	89.600	180.810	6677.49	2690.93	-2569.67	-1181.72	40°15'13.8354"N	104°30'26.5209"W	4.25	
10015.00	89.320	180.150	6678.39	2785.36	-2664.67	-1182.51	40°15'12.8968"N	104°30'26.5449"W	0.75	
10109.00	88.000	179.900	6680.58	2878.68	-2758.64	-1182.56	40°15'11.9683"N	104°30'26.5590"W	1.43	
10203.00	90.920	181.460	6681.47	2972.13	-2852.61	-1183.67	40°15'11.0398"N	104°30'26.5869"W	3.52	
10298.00	88.120	179.460	6682.26	3066.54	-2947.59	-1184.43	40°15'10.1014"N	104°30'26.6105"W	3.62	
10392.00	89.720	179.910	6684.04	3159.81	-3041.57	-1183.92	40°15'9.1727"N	104°30'26.6174"W	1.77	
10487.00	90.430	180.550	6683.91	3254.19	-3136.57	-1184.30	40°15'8.2340"N	104°30'26.6360"W	1.01	
10581.00	90.430	180.740	6683.21	3347.65	-3230.56	-1185.36	40°15'7.3054"N	104°30'26.6632"W	0.20	
10676.00	90.650	181.710	6682.31	3442.20	-3325.53	-1187.39	40°15'6.3672"N	104°30'26.7031"W	1.05	
10770.00	89.260	181.720	6682.39	3535.84	-3419.49	-1190.20	40°15'5.4391"N	104°30'26.7530"W	1.48	
10865.00	89.350	181.520	6683.54	3630.45	-3514.45	-1192.89	40°15'4.5011"N	104°30'26.8013"W	0.23	
10959.00	88.860	179.860	6685.01	3723.90	-3608.42	-1194.02	40°15'3.5726"N	104°30'26.8295"W	1.84	
11054.00	89.880	180.200	6686.05	3818.24	-3703.42	-1194.07	40°15'2.6339"N	104°30'26.8438"W	1.13	
11149.00	89.780	179.630	6686.33	3912.56	-3798.42	-1193.93	40°15'1.6952"N	104°30'26.8557"W	0.61	
11243.00	90.950	180.170	6685.73	4005.89	-3892.41	-1193.76	40°15'0.7664"N	104°30'26.8672"W	1.37	
11338.00	88.430	178.280	6686.25	4100.05	-3987.39	-1192.48	40°14'59.8277"N	104°30'26.8643"W	3.32	
11432.00	90.860	180.560	6686.83	4193.27	-4081.37	-1191.53	40°14'58.8990"N	104°30'26.8656"W	3.54	
11622.00	90.430	179.880	6684.69	4382.02	-4271.35	-1192.26	40°14'57.0218"N	104°30'26.9025"W	0.42	
11716.00	90.580	180.280	6683.86	4475.38	-4365.35	-1192.39	40°14'56.0930"N	104°30'26.9177"W	0.45	
11811.00	90.620	179.320	6682.87	4569.67	-4460.34	-1192.06	40°14'55.1543"N	104°30'26.9271"W	1.01	

WELLPATH DATA (181 stations)

MD [ft]	Inclination [°]	Azimuth [°]	TVD [ft]	Vert Sect [ft]	North [ft]	East [ft]	Latitude	Longitude	DLS [°/100ft]	Comments
11905.00	90.370	179.620	6682.06	4662.91	-4554.34	-1191.19	40°14'54.2254"N	104°30'26.9295"W	0.42	
12000.00	89.850	180.050	6681.87	4757.21	-4649.33	-1190.91	40°14'53.2867"N	104°30'26.9397"W	0.71	
12094.00	89.970	180.180	6682.02	4850.58	-4743.33	-1191.10	40°14'52.3579"N	104°30'26.9557"W	0.19	
12189.00	90.620	179.690	6681.53	4944.90	-4838.33	-1190.99	40°14'51.4192"N	104°30'26.9680"W	0.86	
12283.00	89.750	180.750	6681.23	5038.29	-4932.33	-1191.36	40°14'50.4904"N	104°30'26.9862"W	1.46	
12378.00	89.750	178.960	6681.64	5132.59	-5027.32	-1191.12	40°14'49.5517"N	104°30'26.9968"W	1.88	
12472.00	90.030	179.870	6681.82	5225.82	-5121.32	-1190.16	40°14'48.6228"N	104°30'26.9980"W	1.01	
12567.00	90.310	180.180	6681.54	5320.17	-5216.32	-1190.20	40°14'47.6841"N	104°30'27.0123"W	0.44	
12661.00	90.120	179.800	6681.19	5413.51	-5310.32	-1190.18	40°14'46.7553"N	104°30'27.0256"W	0.45	
12755.00	90.590	179.840	6680.61	5506.82	-5404.31	-1189.89	40°14'45.8264"N	104°30'27.0354"W	0.50	
12850.00	90.340	179.870	6679.84	5601.13	-5499.31	-1189.64	40°14'44.8877"N	104°30'27.0460"W	0.27	



Actual Wellpath Report

GUTTERSEN D12-785 AWP

Page 5 of 7



REFERENCE WELLPATH IDENTIFICATION

Operator	NOBLE ENERGY, INC	Well	GUTTERSEN D12-785
Field	WELD COUNTY (NOBLE NAD 83 GRID)	API	05-123-49069
Facility	SEC.01-T03N-R64W	Wellbore	GUTTERSEN D12-785 AWB
Slot	SLOT#01 Gutteresen D12-785 (315'FNL & 1617'FWL,SEC.01)		

WELLPATH DATA (181 stations)

MD [ft]	Inclination [°]	Azimuth [°]	TVD [ft]	Vert Sect [ft]	North [ft]	East [ft]	Latitude	Longitude	DLS [°/100ft]	Comments
12944.00	89.350	179.750	6680.09	5694.43	-5593.31	-1189.33	40°14'43.9589"N	104°30'27.0556"W	1.06	
13039.00	89.750	180.170	6680.84	5788.76	-5688.30	-1189.27	40°14'43.0202"N	104°30'27.0684"W	0.61	
13228.00	91.230	179.660	6679.22	5976.40	-5877.29	-1188.99	40°14'41.1527"N	104°30'27.0921"W	0.83	
13322.00	90.740	179.620	6677.60	6069.66	-5971.28	-1188.40	40°14'40.2240"N	104°30'27.0980"W	0.52	
13417.00	90.400	180.900	6676.66	6164.04	-6066.27	-1188.83	40°14'39.2854"N	104°30'27.1173"W	1.39	
13511.00	90.400	179.710	6676.00	6257.44	-6160.26	-1189.33	40°14'38.3566"N	104°30'27.1373"W	1.27	
13606.00	91.790	180.950	6674.19	6351.82	-6255.24	-1189.87	40°14'37.4182"N	104°30'27.1581"W	1.96	
13700.00	91.050	181.870	6671.86	6445.38	-6349.18	-1192.19	40°14'36.4902"N	104°30'27.2014"W	1.26	
13795.00	90.310	179.300	6670.73	6539.82	-6444.16	-1193.16	40°14'35.5518"N	104°30'27.2277"W	2.81	
13889.00	91.140	180.200	6669.54	6633.11	-6538.15	-1192.75	40°14'34.6230"N	104°30'27.2359"W	1.30	
13984.00	90.740	180.530	6667.98	6727.50	-6633.13	-1193.35	40°14'33.6845"N	104°30'27.2574"W	0.55	
14078.00	90.830	180.480	6666.69	6820.93	-6727.12	-1194.18	40°14'32.7559"N	104°30'27.2817"W	0.11	
14173.00	90.650	181.350	6665.47	6915.43	-6822.10	-1195.70	40°14'31.8175"N	104°30'27.3150"W	0.94	
14268.00	90.830	179.420	6664.24	7009.83	-6917.09	-1196.33	40°14'30.8790"N	104°30'27.3369"W	2.04	
14362.00	90.800	179.150	6662.90	7103.02	-7011.07	-1195.16	40°14'29.9502"N	104°30'27.3353"W	0.29	
14457.00	89.910	178.720	6662.31	7197.13	-7106.05	-1193.40	40°14'29.0115"N	104°30'27.3263"W	1.04	
14551.00	89.910	178.790	6662.46	7290.22	-7200.03	-1191.35	40°14'28.0826"N	104°30'27.3135"W	0.07	
14646.00	91.350	179.560	6661.42	7384.38	-7295.01	-1189.99	40°14'27.1439"N	104°30'27.3096"W	1.72	
14740.00	90.090	178.930	6660.24	7477.56	-7388.99	-1188.75	40°14'26.2151"N	104°30'27.3072"W	1.50	
14834.00	89.630	179.610	6660.47	7570.76	-7482.98	-1187.55	40°14'25.2863"N	104°30'27.3053"W	0.87	
14929.00	89.570	178.640	6661.13	7664.91	-7577.97	-1186.10	40°14'24.3475"N	104°30'27.3003"W	1.02	
15023.00	90.310	178.470	6661.23	7757.95	-7671.94	-1183.73	40°14'23.4187"N	104°30'27.2833"W	0.81	
15118.00	88.310	180.410	6662.37	7852.16	-7766.92	-1182.80	40°14'22.4801"N	104°30'27.2850"W	2.93	
15213.00	89.600	178.380	6664.10	7946.35	-7861.89	-1181.80	40°14'21.5415"N	104°30'27.2858"W	2.53	
15307.00	90.250	180.870	6664.23	8039.61	-7955.88	-1181.18	40°14'20.6127"N	104°30'27.2914"W	2.74	
15402.00	91.230	182.530	6663.00	8134.23	-8050.82	-1184.00	40°14'19.6748"N	104°30'27.3415"W	2.03	
15496.00	89.380	179.310	6662.50	8227.72	-8144.79	-1185.51	40°14'18.7465"N	104°30'27.3745"W	3.95	
15591.00	90.800	179.750	6662.35	8321.97	-8239.79	-1184.73	40°14'17.8077"N	104°30'27.3781"W	1.56	
15685.00	90.340	181.000	6661.42	8415.38	-8333.78	-1185.34	40°14'16.8790"N	104°30'27.3996"W	1.42	
15780.00	90.250	180.650	6660.93	8509.86	-8428.77	-1186.71	40°14'15.9406"N	104°30'27.4310"W	0.38	
15874.00	90.370	179.020	6660.42	8603.17	-8522.76	-1186.44	40°14'15.0117"N	104°30'27.4410"W	1.74	
15969.00	91.720	180.370	6658.69	8697.43	-8617.74	-1185.94	40°14'14.0732"N	104°30'27.4482"W	2.01	
16063.00	91.790	180.550	6655.81	8790.82	-8711.69	-1186.69	40°14'13.1449"N	104°30'27.4715"W	0.21	
16158.00	91.510	181.490	6653.07	8885.30	-8806.64	-1188.38	40°14'12.2069"N	104°30'27.5070"W	1.03	

WELLPATH DATA (181 stations)

MD [ft]	Inclination [°]	Azimuth [°]	TVD [ft]	Vert Sect [ft]	North [ft]	East [ft]	Latitude	Longitude	DLS [°/100ft]	Comments
16252.00	89.380	180.320	6652.34	8978.80	-8900.62	-1189.86	40°14'11.2784"N	104°30'27.5397"W	2.59	
16347.00	88.830	180.630	6653.82	9073.22	-8995.60	-1190.65	40°14'10.3400"N	104°30'27.5636"W	0.66	
16441.00	89.140	180.290	6655.49	9166.64	-9089.58	-1191.41	40°14'9.4114"N	104°30'27.5869"W	0.49	
16536.00	89.350	180.500	6656.74	9261.04	-9184.57	-1192.06	40°14'8.4728"N	104°30'27.6090"W	0.31	
16630.00	89.510	180.080	6657.68	9354.44	-9278.57	-1192.54	40°14'7.5441"N	104°30'27.6287"W	0.48	
16725.00	90.710	180.870	6657.49	9448.86	-9373.56	-1193.32	40°14'6.6055"N	104°30'27.6526"W	1.51	
16819.00	90.250	180.920	6656.71	9542.37	-9467.55	-1194.79	40°14'5.6770"N	104°30'27.6850"W	0.49	
16914.00	90.490	181.010	6656.09	9636.88	-9562.53	-1196.39	40°14'4.7386"N	104°30'27.7194"W	0.27	
17009.00	90.710	179.750	6655.10	9731.29	-9657.52	-1197.02	40°14'3.8000"N	104°30'27.7412"W	1.35	
17103.00	90.400	179.010	6654.19	9824.50	-9751.51	-1196.01	40°14'2.8712"N	104°30'27.7417"W	0.85	
17197.00	90.490	178.290	6653.46	9917.56	-9845.48	-1193.79	40°14'1.9424"N	104°30'27.7267"W	0.77	Last BHI MWD Survey

REFERENCE WELLPATH IDENTIFICATION

Operator	NOBLE ENERGY, INC	Well	GUTTERSEN D12-785
Field	WELD COUNTY (NOBLE NAD 83 GRID)	API	05-123-49069
Facility	SEC.01-T03N-R64W	Wellbore	GUTTERSEN D12-785 AWP
Slot	SLOT#01 Gutteresen D12-785 (315'FNL & 1617'FWL,SEC.01)		

WELLPATH DATA (181 stations) † = interpolated, ‡ = extrapolated station

MD [ft]	Inclination [°]	Azimuth [°]	TVD [ft]	Vert Sect [ft]	North [ft]	East [ft]	Latitude	Longitude	DLS [°/100ft]	Comments
17483.00†	90.490	178.290	6651.01	10200.43	-10131.34	-1185.26	40°13'59.1168"N	104°30'27.6579"W	0.00	Projection to Bit

TARGETS

Name	TVD [ft]	North [ft]	East [ft]	Grid East [US ft]	Grid North [US ft]	Latitude	Longitude	Shape
GUTTERSEN D12-785 SECTION 1	0.00	0.00	0.00	3278230.49	1339436.93	40°15'39.0960"N	104°30'10.9080"W	polygon
	2D Polygon: dimensions not calculated							
GUTTERSEN D12-785 SECTION 12	0.00	0.00	0.00	3278230.49	1339436.93	40°15'39.0960"N	104°30'10.9080"W	polygon
	2D Polygon: dimensions not calculated							
GUTTERSEN D12-785 Spacing Unit Boundry	0.00	0.00	0.00	3278230.49	1339436.93	40°15'39.0960"N	104°30'10.9080"W	polygon
	2D Polygon: dimensions not calculated							
Gutteresen D12-785 BHL PLAN (200'FSL & 350'FWL,SEC.12)	6651.00	-10131.91	-1201.24	3277029.30	1329305.48	40°13'59.1129"N	104°30'27.8640"W	point
Gutteresen D12-785 LP PLAN/ LP (200'FNL & 400'FWL,SEC.01)	6667.00	104.40	-1218.07	3277012.47	1339541.33	40°15'40.2626"N	104°30'26.6036"W	point
GUTTERSEN D12-785 VS Target Rev-2	6682.00	-4085.28	-1211.20	3277019.34	1335351.84	40°14'58.8626"N	104°30'27.1199"W	point

WELLPATH COMPOSITION - Ref Wellbore: GUTTERSEN D12-785 AWP Ref Wellpath: GUTTERSEN D12-785 AWP

Start MD [ft]	End MD [ft]	Positional Uncertainty Model	Log Name/Comment	Wellbore	Survey Date
0.00	1935.00	Gyrodatta 2015 - GC+DROP+COND	Gyrodatta Surface Surveys <80'- 1935'>	GUTTERSEN D12-785 AWP	4/21/2022
1935.00	17483.00	OWSG MWD rev2 (MS+IFR1)	8.5" AT-Curve Pro - OWSG MWD rev2 (MS+IFR1) <1982'- 17197'>	GUTTERSEN D12-785 AWP	4/22/2022



Actual Wellpath Report

GUTTERSEN D12-785 AWP
Page 7 of 7



REFERENCE WELLPATH IDENTIFICATION

Operator	NOBLE ENERGY, INC	Well	GUTTERSEN D12-785
Field	WELD COUNTY (NOBLE NAD 83 GRID)	API	05-123-49069
Facility	SEC.01-T03N-R64W	Wellbore	GUTTERSEN D12-785 AWP
Slot	SLOT#01 Gutteresen D12-785 (315'FNL & 1617'FWL,SEC.01)		

WELLPATH COMMENTS

MD [ft]	Inclination [°]	Azimuth [°]	TVD [ft]	Comment
1935.00	1.830	285.770	1934.85	Last Surface Gyro
1982.00	1.580	300.010	1981.83	First BHI MWD Survey
7245.00	87.386	182.045	6664.54	200'FNL &382'FWL, SEC.1
17197.00	90.490	178.290	6653.46	Last BHI MWD Survey
17483.00	90.490	178.290	6651.01	Projection to Bit