



FORMATION TEST REPORT



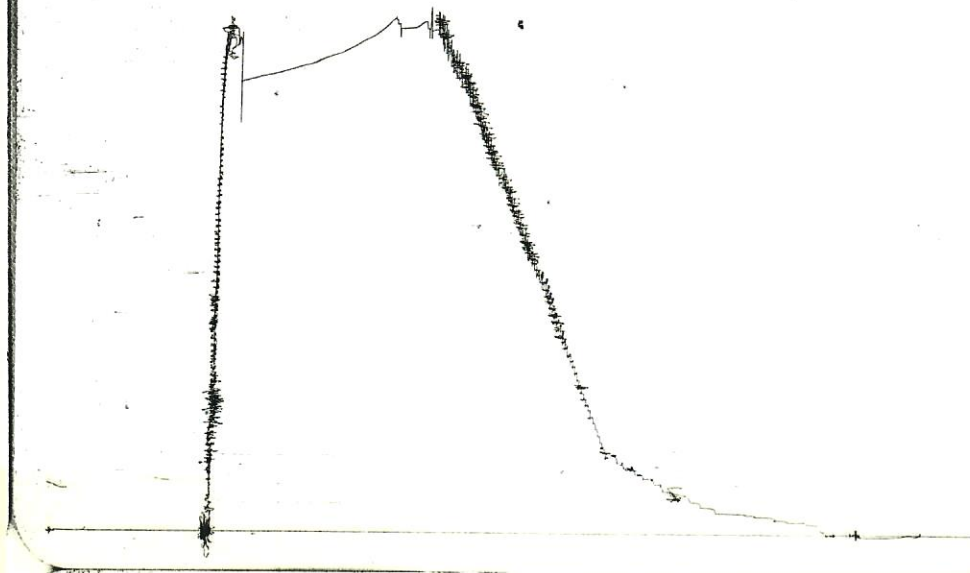
Home Office:

Wichita, Kansas 67201

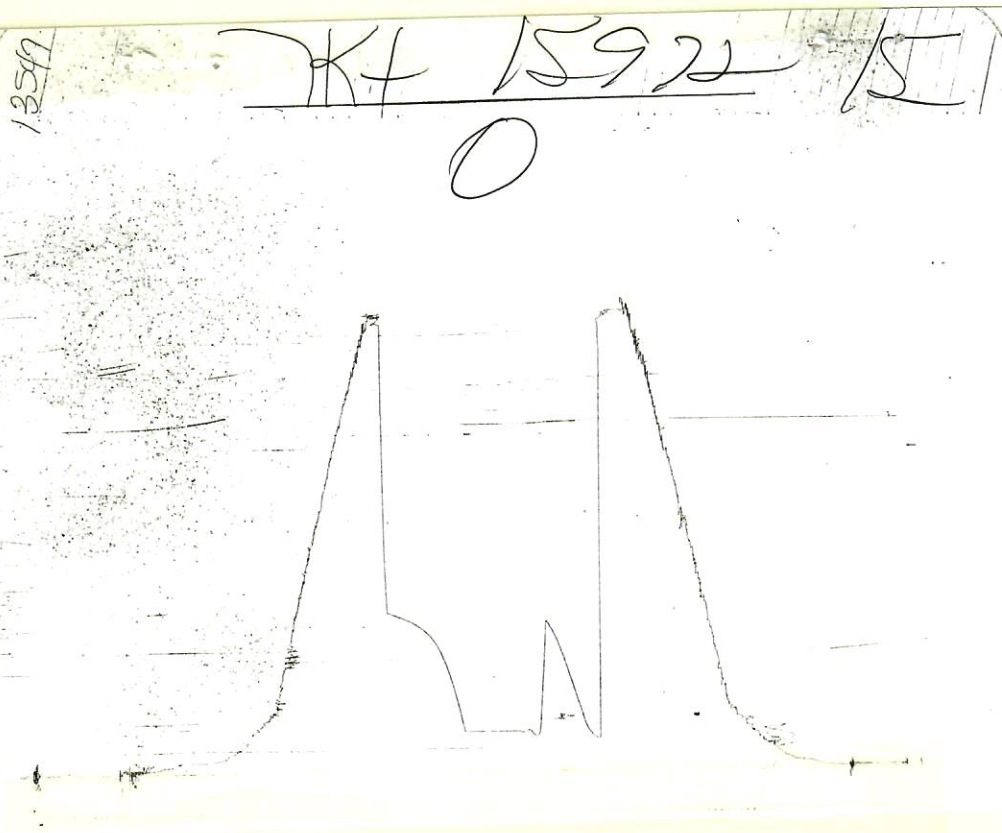
P.O. Box 1599

Phone (316) 262-5861

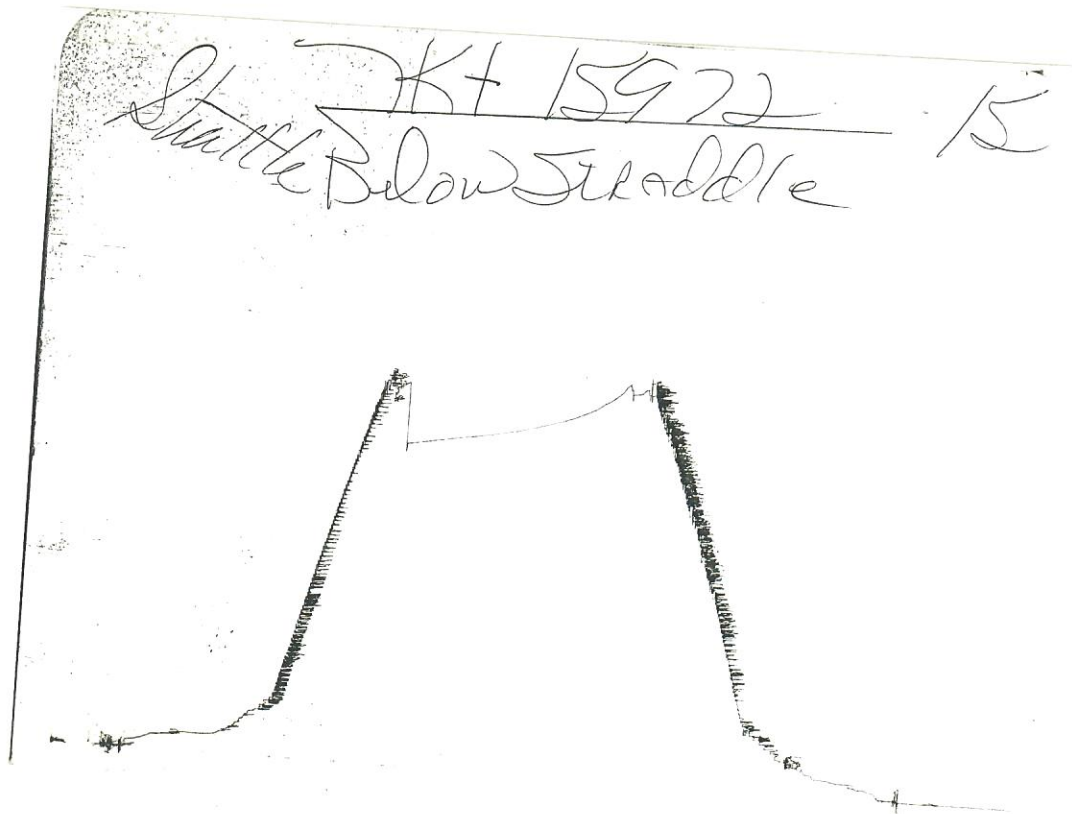
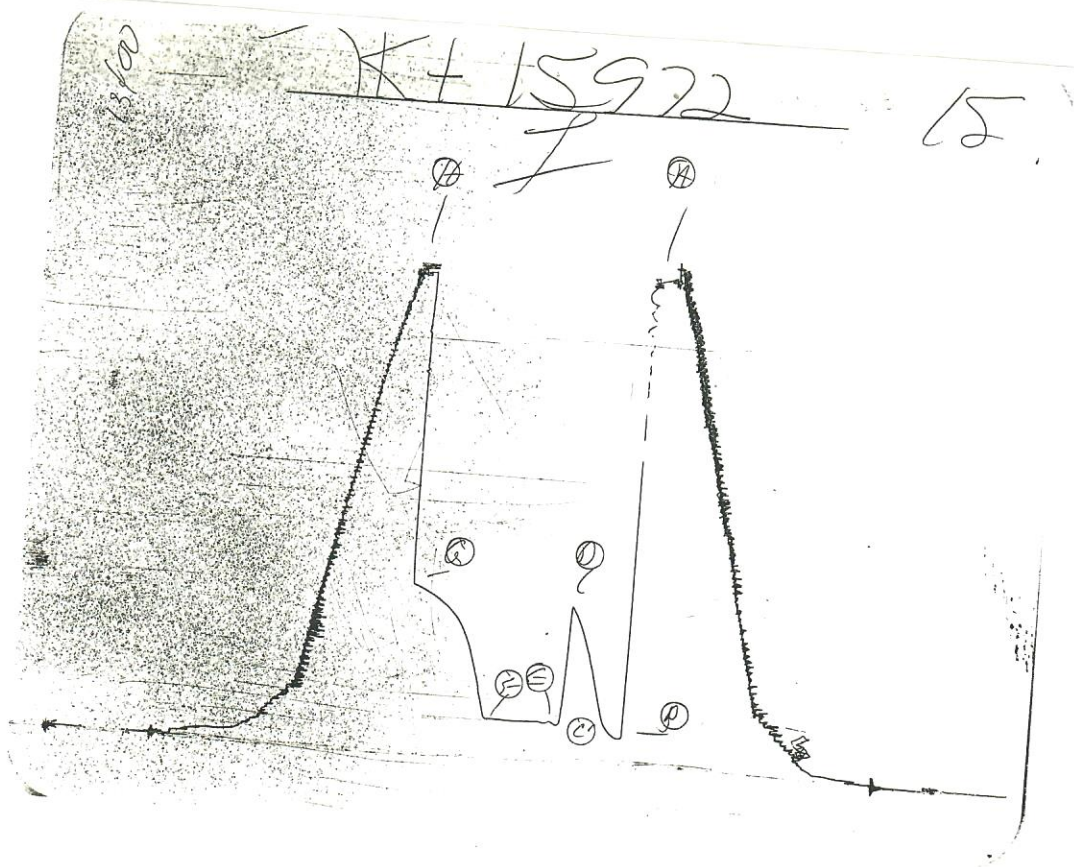
Shuttle KT 15922 15
Below Straddle



Inside Recorder



Outside Recorder

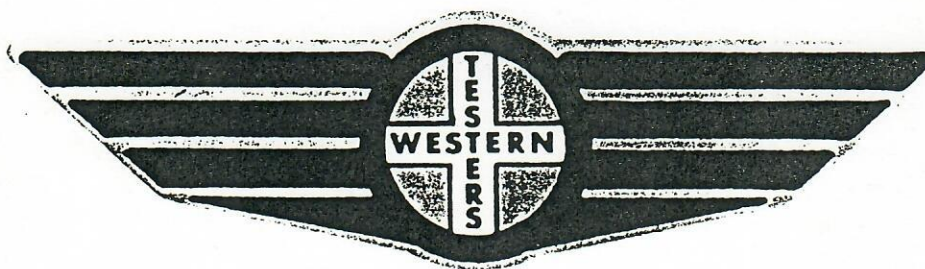


FORMATION TEST REPORT

RECEIVED

MAY 2 1990

COLO.OIL&GASCONS.COMM



Home Office:

Wichita, Kansas 67201

P.O. Box 1599

Phone (316) 262-5861

WESTERN TESTING CO. INC.
SUBSURFACE PRESSURE SURVEY

DATE : 4-26-90 TICKET : 15972
CUSTOMER : UNION PACIFIC RESOURCES COMPANY LEASE : HARKER 12-35
WELL : #4 TEST: 2 GEOLOGIST : B. COOPER
ELEVATION : 4093 K.B. FORMATION : MORROW
SECTION : 35 TOWNSHIP : 12S
RANGE : 43W COUNTY : CHEYENNE STATE : COLORADO
GAUGE SN# : 13400 RANGE : 3950 CLOCK : 12

INTERVAL FROM : 5158 TO : 5230 TOTAL DEPTH : 5377

DEPTH OF SELECTIVE ZONE :

PACKER DEPTH : 5153 SIZE : 6.75
PACKER DEPTH : 5158 SIZE : 6.75
PACKER DEPTH : 5230 SIZE : 6.75
PACKER DEPTH : SIZE :

DRILLING CON. : EXETER RIG #14
MUD TYPE : CHEMICAL VISCOSITY : 54
WEIGHT : 8.9 WATER LOSS (CC) : 6.0
CHLORIDES (PPM) : 750
JARS-MAKE : WTC SERIAL NUMBER : 415
DID WELL FLOW ? : NO REVERSED OUT ? : NO

DRILL COLLAR LENGTH : 578 FT I.D. inch : 2.20
WEIGHT PIPE LENGTH : 0 FT I.D. inch : 0.00
DRILL PIPE LENGTH : 4548 FT I.D. inch : 3.80
TEST TOOL LENGTH : 32 FT TOOL SIZE : 5.50
ANCHOR LENGTH : 72 FT ANCHOR SIZE : 5.50
SURFACE CHOKE SIZE : .75 IN BOTTOM CHOKE SIZE : .75
MAIN HOLE SIZE : 7.875 IN TOOL JOINT SIZE : 4.5XH

BLOW COMMENT #1 : INITIAL FLOW PERIOD OPENED 1/4" BLOW-
BLOW COMMENT #2 : 3" IN 5 MIN.-6" IN 10 MIN.-10" IN 15 MIN.
BLOW COMMENT #3 : FINAL FLOW PERIOD OPENED TO 6" BLOW-
BLOW COMMENT #4 : BOTTOM OF BUCKET IN 5 MINUTES.



RECOVERED : 578 FT OF: SLI. GAS-CUT MUD
RECOVERED : 0 FT OF: 5%GAS 95%MUD
RECOVERED : 0 FT OF: RW- 1.8 AT 74 DEGREES
RECOVERED : 0 FT OF: PIT MUD RW- 1.8 AT 64 DEGREES

Total Barrels Fluid = 2.72
Total Fluid Prod Rate = 55.90 BFPD
Indicated Wtr Rate = 5.32 BWPD

REMARK 1 : AFE #00834
REMARK 2 : CHLORIDES 800 P.P.M.
REMARK 3 : FINAL FLOW PERIOD- 4# 10 MIN.- 6# 20 MIN.- 8# 30 MIN.-
REMARK 4 : 8# 40 MIN.- 8# 50 MIN.- 8# 60 MIN.

SET PACKER(S) : 6:30 A.M. TIME STARTED OFF BOTTOM : 9:15 A.M.
WELL TEMPERATURE : 0
INITIAL HYDROSTATIC PRESSURE (A) 2486
INITIAL FLOW PERIOD MIN: 15 (B) 150 PSI TO (C) : 200
INITIAL CLOSED IN PERIOD MIN: 30 (D) 803
FINAL FLOW PERIOD MIN: 55 (E) 199 PSI TO (F) : 208
FINAL CLOSED IN PERIOD MIN: 60 (G) 857
FINAL HYDROSTATIC PRESSURE (H) 2486

WESTERN TESTING CO. INC.
WICHITA-KANSAS

Pressure Transient Report

COMPANY : UNION PACIFIC RESOURCES COMPANY
RIG : CHEYENNE-COLORADO
FIELD : HARKER 12-35
WELL : #4
DATE : 4-26-90
GAUGE NO : 13400

OPERATIONAL COMMENTS

AFE #00834
CHLORIDES 800 P.P.M.
FINAL FLOW PERIOD- 4# 10 MIN.- 6# 20 MIN.- 8# 30 MIN.-
8# 40 MIN.- 8# 50 MIN.- 8# 60 MIN.

COMPANY : UNION PACIFIC RESOURCES COMPANY

FIELD : HARKER 12-35

WELL : #4

JOB # : 15972

GAUGE # : 13400

DEPTH : 5377

DATE : 26/ 4/90

TEST : AFE #00834

DATA No.	REAL TIME HR:MN:SS	ELAPSE TIME DELTA HOURS	PRESSURE PSIG	TEMP DEG F	DELTA P Pi-P(i-1)
-------------	-----------------------	----------------------------	------------------	---------------	----------------------

INITIAL FLOW PERIOD

2	6:30: 0	0.000	150.000	0.00	0.000
3	6:34:59	0.083	153.000	0.00	3.000
4	6:40: 0	0.167	178.000	0.00	25.000
5	6:45: 0	0.250	200.000	0.00	22.000

INITIAL SHUT-IN PERIOD

6	6:48: 0	0.300	249.000	0.00	49.000
7	6:51: 0	0.350	319.000	0.00	70.000
8	6:54: 0	0.400	391.000	0.00	72.000
9	6:57: 0	0.450	477.000	0.00	86.000
10	7: 0: 0	0.500	543.000	0.00	66.000
11	7: 3: 0	0.550	607.000	0.00	64.000
12	7: 6: 0	0.600	661.000	0.00	54.000
13	7: 9: 0	0.650	714.000	0.00	53.000
14	7:12: 0	0.700	757.000	0.00	43.000
15	7:15: 0	0.750	803.000	0.00	46.000

FINAL FLOW PERIOD

16	7:16: 0	0.767	199.000	0.00	-604.000
17	7:19:59	0.833	202.000	0.00	3.000
18	7:25: 0	0.917	208.000	0.00	6.000
19	7:30: 0	1.000	208.000	0.00	0.000
20	7:34:59	1.083	208.000	0.00	0.000
21	7:40: 0	1.167	208.000	0.00	0.000
22	7:45: 0	1.250	208.000	0.00	0.000
23	7:49:59	1.333	208.000	0.00	0.000
24	7:55: 0	1.417	208.000	0.00	0.000
25	8: 0: 0	1.500	208.000	0.00	0.000
26	8: 4:59	1.583	208.000	0.00	0.000
27	8:10: 0	1.667	208.000	0.00	0.000

FINAL SHUT-IN PERIOD

28	8:13: 0	1.717	261.000	0.00	53.000
29	8:16: 0	1.767	236.000	0.00	-25.000
30	8:19: 0	1.817	416.000	0.00	180.000
31	8:22: 0	1.867	486.000	0.00	70.000
32	8:25: 0	1.917	553.000	0.00	67.000
33	8:28: 0	1.967	603.000	0.00	50.000
34	8:31: 0	2.017	651.000	0.00	48.000
35	8:34: 0	2.067	685.000	0.00	34.000
36	8:37: 0	2.117	714.000	0.00	29.000
37	8:40: 0	2.167	735.000	0.00	21.000
38	8:43: 0	2.217	756.000	0.00	21.000
39	8:46: 0	2.267	773.000	0.00	17.000
40	8:49: 0	2.317	787.000	0.00	14.000
41	8:52: 0	2.367	801.000	0.00	14.000
42	8:55: 0	2.417	812.000	0.00	11.000
43	8:58: 0	2.467	824.000	0.00	12.000
44	9: 1: 0	2.517	834.000	0.00	10.000
45	9: 4: 0	2.567	841.000	0.00	7.000
46	9: 7: 0	2.617	852.000	0.00	11.000
47	9:10: 0	2.667	857.000	0.00	5.000

FLUID SAMPLE REPORT

Date : 4-26-90

Ticket No. : 15972

Company : UNION PACIFIC RESOURCES COMPANY

Well Name & No. : #4 HARKER 12-35

DST No. 2

County : CHEYENNE

State : COLORADO

Sampler No. : 2

Test Interval : 5158-5230

=====

Pressure in Sampler	100 PSIG	BHT	NA	Deg F
Total Volume of Sampler	: 3150	cc		
Total Volume of Sample	:	cc		
Oil:		cc		
Water:		cc		
Mud:		cc		
Gas:	4.5	cu ft		
Other:		cc		

=====

RESITIVITY

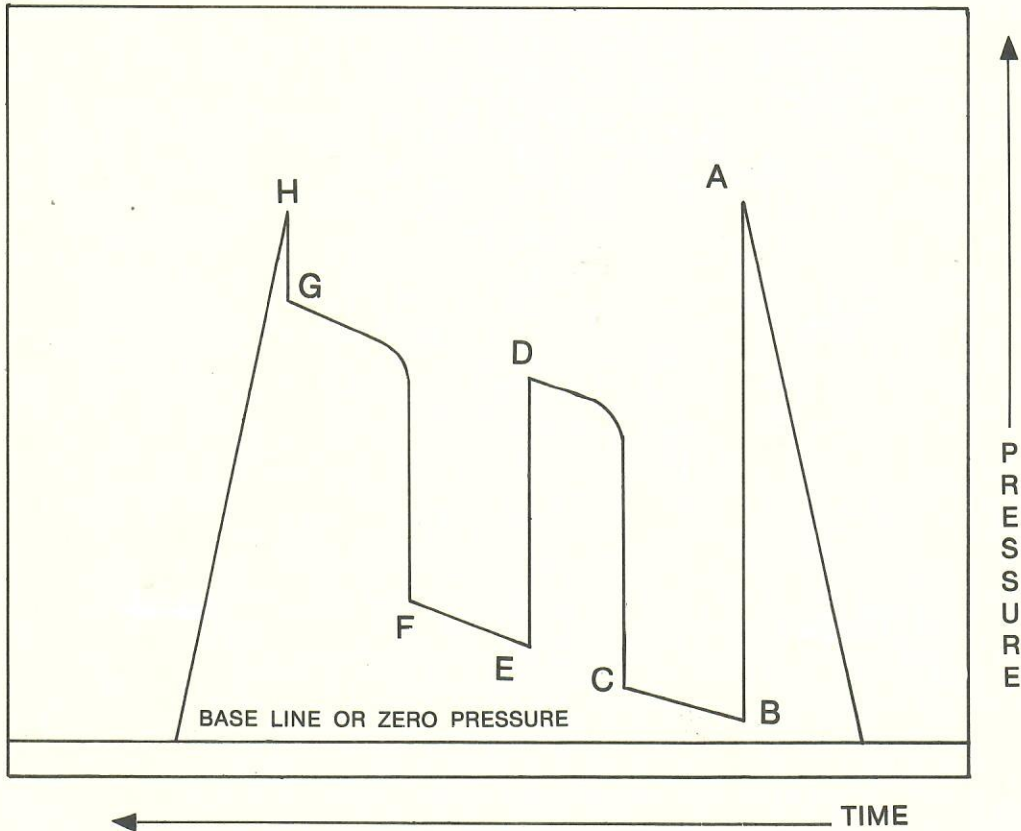
Drilling Mud	@	F	Chloride Content	ppm
Mud Pit Sample	@	F	Chloride Content	ppm
Gas/Oil Ratio		Gravity	API @	Deg F
Where was sample drained		RIG		

Remarks: AFE#00834

COMPANY TERMS

Western Testing Co., Inc. shall not be liable for damages of any kind to the property or personnel of the one for whom a test is made or for any loss suffered or sustained directly or indirectly through the use of its equipment, of its statements or opinion concerning the results of any test. Tools lost or damaged in the hole shall be paid at cost by the party for whom the test is made.

AK-1 Recorders



A - Initial Hydrostatic
B - First Initial Flow
C - First Final Flow
D - Initial Shut-In

E - Second Initial Flow
F - Second Final Flow
G - Final Shut-In
H - Final Hydrostatic