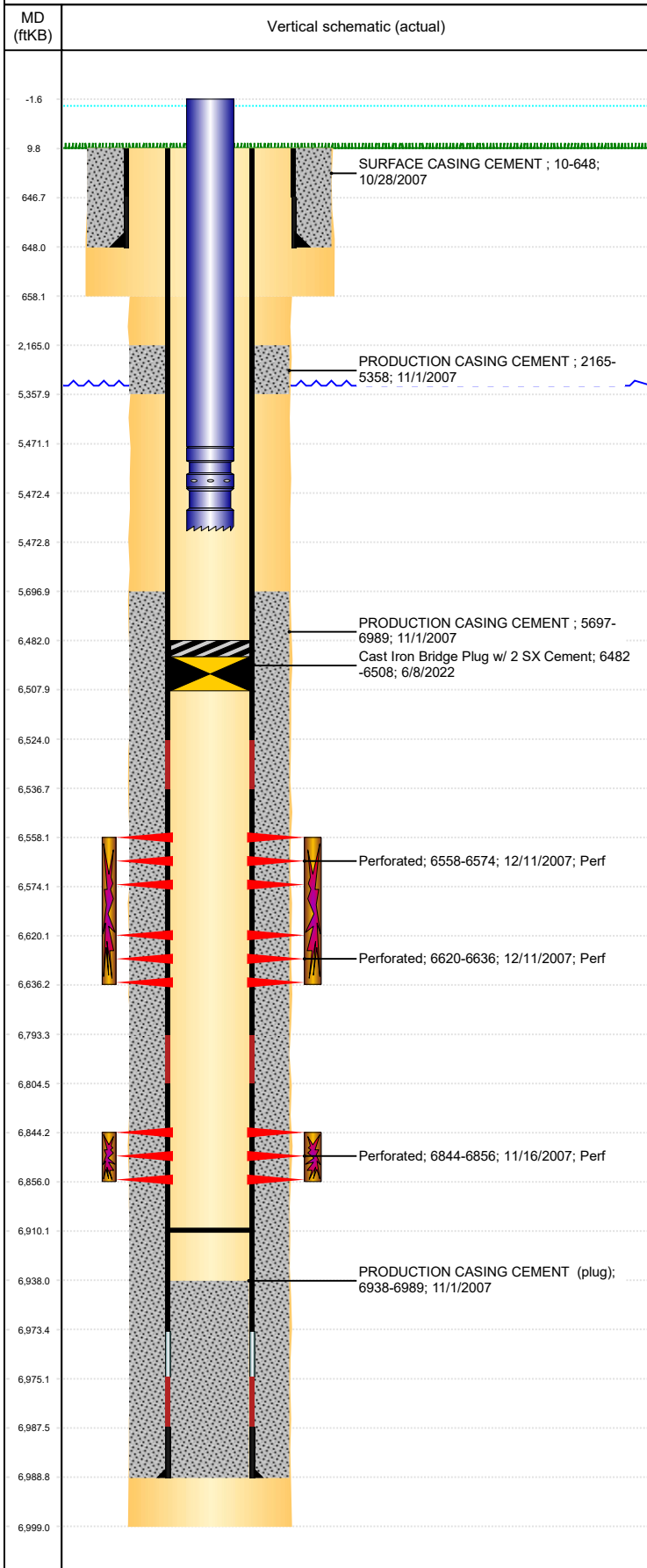




P&A Wellbore For State

Well Name: WOODY D01-09

Land, Original Hole, 6/24/2022 9:33:08 AM



Well Header

Surface UWI	Business Unit	Gov Auth Dist	Prod Tree Loc
0512326414	Rockies		Land
Orig. KB to Gnd (ft)	Original Spud Date	Abandon Date	Well Sub-Status
10.00	10/27/2007		PR

Comment
DISCREPANCY IN PROD CSG DEPTH: DRL RPT & CSG TALLY 6989', ST RPT 6973', USED 6989'

Surface Location (Congressional)

Qtr 3	Qtr 4	Section	Twnshp	Twnsh...	Range	Rng E/...	Latitude (°)	Longitude (°)
NE	SE	1	3	N	64	W	40.252097624	-104.491818719

Wellbore Sections

Section Des	Hole Size (in)	Act Top (ftKB)	Act Btm (ftKB)
SURFACE	12 1/4	10.0	658.0
PRODUCTION	7 7/8	658.0	6,999.0

Casing Strings

Csg Des	Run Date	OD (in)	Wt/Len (lb/ft)	Grade	Top Depth (MD) (ftKB)	Set Depth (MD) (ftKB)
Surface	10/28/2007	8 5/8	24.00	J-55	10	648
Production Casing	11/1/2007	4 1/2	11.60	M-80	10	6989

Cement

Des	Start Date	Top (ftKB)	Btm (ftKB)
SURFACE CASING CEMENT	10/28/2007	10.0	648.0
PRODUCTION CASING CEMENT	11/1/2007	2,165.0	5,358.0
PRODUCTION CASING CEMENT	11/1/2007	5,697.0	6,989.0

Zone Statuses

Zone Name	Status Date	Status	Fluid Type	Job	Prod Method
NIOBRARA	12/14/2007	Closed		DRILLING/COMPLETION - ORIGINAL, 10/27/200...	
CODELL	12/14/2007	Closed		DRILLING/COMPLETION - ORIGINAL, 10/27/200...	

Perforation Data

Linked Zone	Explosive Type	Entered Shot Total	Top (ftKB)	Btm (ftKB)	Date
NIOBRARA, Original Hole	A	64	6,558.0	6,574.0	12/11/2007
NIOBRARA, Original Hole	B	64	6,620.0	6,636.0	12/11/2007
CODELL, Original Hole		48	6,844.0	6,856.0	11/16/2007

Stimulation Intervals

Zone	Start Date	Top (ftKB)	Btm (ftKB)
NIOBRARA, Original Hole	12/11/2007	6,558.0	6,636.0
CODELL, Original Hole	12/11/2007	6,844.0	6,856.0

Other In Hole

Run Date	Des	Make	OD (in)	Top (ftKB)	Btm (ftKB)
6/8/2022	Cast Iron Bridge Plug w/ 2 SX Cement		3.99	6,482.0	6,508.0

Logs

Date	Type	Depth Top (MD) (ftKB)	Btm (ftKB)
11/1/2007	COMPENSATED DENSITY	2,600	6,978.0
11/1/2007	INDUCTION	648	6,998.0
11/15/2007	CBL/CCL/GR	2,050	6,936.0
1/9/2014	GYRO	0	6,750.0

Plug Back Total Depths

Date	Type	Com	PBTD (ftKB)
11/15/2007	FILL	DEPTH LOGGER FROM CBL	6,938
3/18/2008	FILL	DRL PLUG FREE, PUSH TO 6910', LEAVES 54' RAT HOLE, R...	6,910