



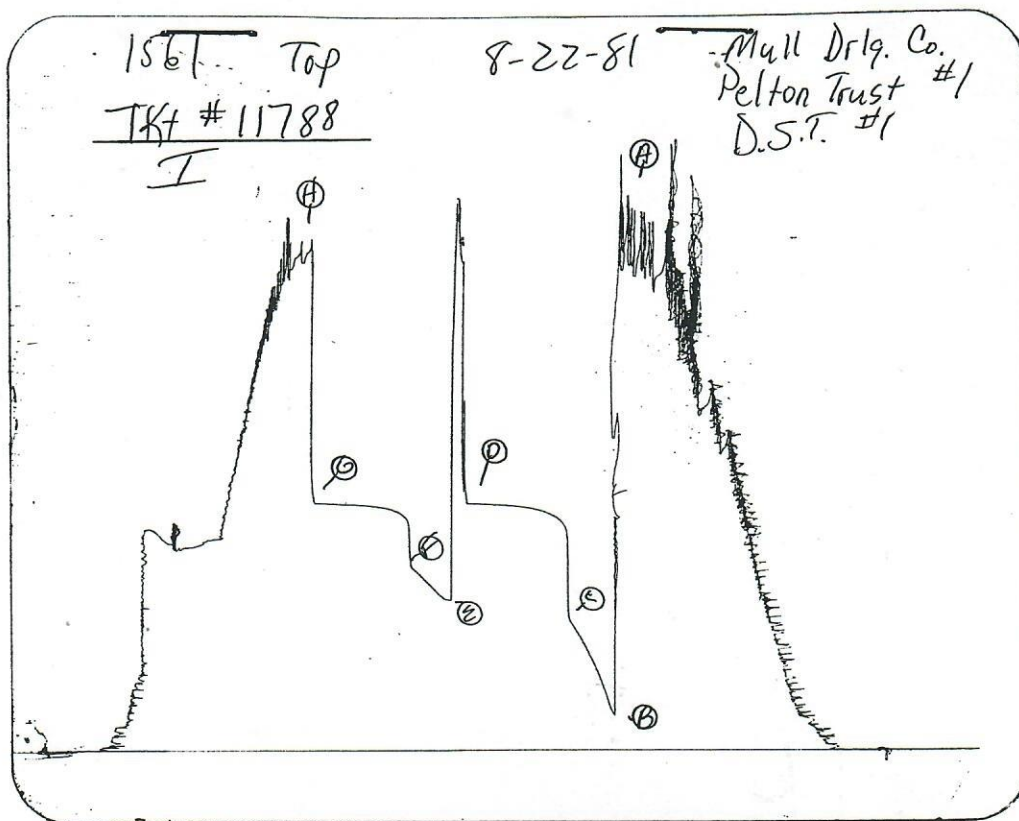
Home Office: Wichita, Kansas 67201
P.O. Box 1599 (316) 262-5861

Company Mull Drilling Company, Inc. Lease & Well No. Pelton Trust #1
Elevation 4376 Kelly Bushing Formation Cheyenne Effective Pay -- Ft. Ticket No. 1178
Date 8/22/81 Sec. 30 Twp. 12S Range 44W County Cheyenne State Colorado
Test Approved by Roger L. Martin Western Representative Clyde Scheffe
Formation Test No. 1 Interval Tested from 4296 ft. to 4316 ft. Total Depth 4316 ft.
Packer Depth 4291 ft. Size 6 3/4 in. Packer Depth -- ft. Size -- in.
Packer Depth 4296 ft. Size 6 3/4 in. Packer Depth -- ft. Size -- in.
Depth of Selective Zone Set --
Top Recorder Depth (Inside) 4306 ft. Recorder Number 1561 Cap. 3200
Bottom Recorder Depth (Outside) 4309 ft. Recorder Number 1134 Cap. 4500
Below Straddle Recorder Depth -- ft. Recorder Number -- Cap. --
Drilling Contractor BlueGoose Drlg. Rig #2 Drill Collar Length 300 I. D. 2.25 in.
Mud Type premix-chemical Viscosity 50 Weight Pipe Length -- I. D. -- in.
Weight 8.9 Water Loss 40 cc. Drill Pipe Length 3976 I. D. 3.8 in.
Chlorides 1,000 P.P.M. Test Tool Length 20 ft. Tool Size 5 1/2 OD in.
Jars: Make -- Serial Number -- Anchor Length 20 ft. Size 5 1/2 OD in.
Did Well Flow? No Reversed Out Yes Surface Choke Size 3/4 in. Bottom Choke Size 3/4 in.
Main Hole Size 7 7/8 in. Tool Joint Size 4 1/2 XH in.

Blow: Initial flow period strong blow; off bottom of bucket in two minutes. Strong blow on final flow period ; off bottom in forty-five seconds.

Recovered 2083 ft. of clean gassy oil 38 gravity
Recovered 123 ft. of foamy gassy mud cut oil
Recovered -- ft. of --
Recovered -- ft. of --
Recovered -- ft. of --
Remarks: Tool torqued up when trying to open second time; pulled packers loose; reset packers; opened tool; finished test.

Time Set Packer(s) 10:05 ~~A.M.~~ P.M. Time Started Off Bottom 1:20 ~~P.M.~~ A.M. Maximum Temperature 138°
Initial Hydrostatic Pressure 2022 P.S.I.
Initial Flow Period 35 Minutes (B) 140 P.S.I. to (C) 533 P.S.I.
Initial Closed In Period 75 Minutes (D) 1008 P.S.I.
Final Flow Period 30 Minutes (E) 614 P.S.I. to (F) 746 P.S.I.
Final Closed In Period 72 Minutes (G) 1008 P.S.I.
Final Hydrostatic Pressure 2006 P.S.I. (H)



This is an actual photograph of recorder chart.

POINT	PRESSURE	
	Field Reading	Office Reading
(A) Initial Hydrostatic Mud	2046	2022 PSI
(B) First Initial Flow Pressure	141	140 PSI
(C) First Final Flow Pressure	526	533 PSI
(D) Initial Closed-in Pressure	1006	1008 PSI
(E) Second Initial Flow Pressure	613	614 PSI
(F) Second Final Flow Pressure	746	746 PSI
(G) Final Closed-in Pressure	1006	1008 PSI
(H) Final Hydrostatic Mud	2014	2006 PSI

WESTERN TESTING CO., INC.

Pressure Data

Date 8/22/81
 Recorder No. 1561 Capacity 3200 Test Ticket No. 11788
 Clock No. --- Elevation 4376 Kelly Bushing Location 4306 Ft. ---
 Well Temperature 138 °F

Point	Pressure	Time Given	Time Computed
A Initial Hydrostatic Mud	<u>2022</u> P.S.I.	<u>10:05P</u>	<u>M</u>
B First Initial Flow Pressure	<u>140</u> P.S.I.	<u>30</u> Mins.	<u>35</u> Mins.
C First Final Flow Pressure	<u>533</u> P.S.I.	<u>70</u> Mins.	<u>75</u> Mins.
D Initial Closed-in Pressure	<u>1008</u> P.S.I.	<u>30</u> Mins.	<u>30</u> Mins.
E Second Initial Flow Pressure	<u>614</u> P.S.I.	<u>60</u> Mins.	<u>72</u> Mins.
F Second Final Flow Pressure	<u>746</u> P.S.I.		
G Final Closed-in Pressure	<u>1008</u> P.S.I.		
H Final Hydrostatic Mud	<u>2006</u> P.S.I.		

PRESSURE BREAKDOWN

First Flow Pressure
 Breakdown: 7 Inc.
 of 5 mins. and a
 final inc. of 0 Min.

Initial Shut-In
 Breakdown: 25 Inc.
 of 3 mins. and a
 final inc. of 0 Min.

Second Flow Pressure
 Breakdown: 6 Inc.
 of 5 mins. and a
 final inc. of 0 Min.

Final Shut-In
 Breakdown: 24 Inc.
 of 3 mins. and a
 final inc. of 0 Min.

Point Mins.	Press.	Point Minutes	Press.	Point Minutes	Press.	Point Minutes	Press.
P 1 <u>0</u>	<u>140</u>	<u>0</u>	<u>533</u>	<u>0</u>	<u>614</u>	<u>0</u>	<u>746</u>
P 2 <u>5</u>	<u>204</u>	<u>3</u>	<u>908</u>	<u>5</u>	<u>618</u>	<u>3</u>	<u>940</u>
P 3 <u>10</u>	<u>283</u>	<u>6</u>	<u>933</u>	<u>10</u>	<u>641</u>	<u>6</u>	<u>959</u>
P 4 <u>15</u>	<u>349</u>	<u>9</u>	<u>947</u>	<u>15</u>	<u>673</u>	<u>9</u>	<u>972</u>
P 5 <u>20</u>	<u>408</u>	<u>12</u>	<u>957</u>	<u>20</u>	<u>699</u>	<u>12</u>	<u>976</u>
P 6 <u>25</u>	<u>462</u>	<u>15</u>	<u>965</u>	<u>25</u>	<u>726</u>	<u>15</u>	<u>984</u>
P 7 <u>30</u>	<u>507</u>	<u>18</u>	<u>972</u>	<u>30</u>	<u>746</u>	<u>18</u>	<u>987</u>
P 8 <u>35</u>	<u>533</u>	<u>21</u>	<u>977</u>			<u>21</u>	<u>991</u>
P 9		<u>24</u>	<u>981</u>			<u>24</u>	<u>993</u>
P 10		<u>27</u>	<u>986</u>			<u>27</u>	<u>995</u>
P 11		<u>30</u>	<u>989</u>			<u>30</u>	<u>997</u>
P 12		<u>33</u>	<u>991</u>			<u>33</u>	<u>998</u>
P 13		<u>36</u>	<u>993</u>			<u>36</u>	<u>1000</u>
P 14		<u>39</u>	<u>995</u>			<u>39</u>	<u>1001</u>
P 15		<u>42</u>	<u>997</u>			<u>42</u>	<u>1002</u>
P 16		<u>45</u>	<u>999</u>			<u>45</u>	<u>1003</u>
P 17		<u>48</u>	<u>1000</u>			<u>48</u>	<u>1003</u>
P 18		<u>51</u>	<u>1002</u>			<u>51</u>	<u>1004</u>
P 19		<u>54</u>	<u>1003</u>			<u>54</u>	<u>1005</u>
P 20		<u>57</u>	<u>1004</u>			<u>57</u>	<u>1006</u>
WTC - 4		<u>60</u>	<u>1005</u>			<u>60</u>	<u>1006</u>

continued next page

continued next page