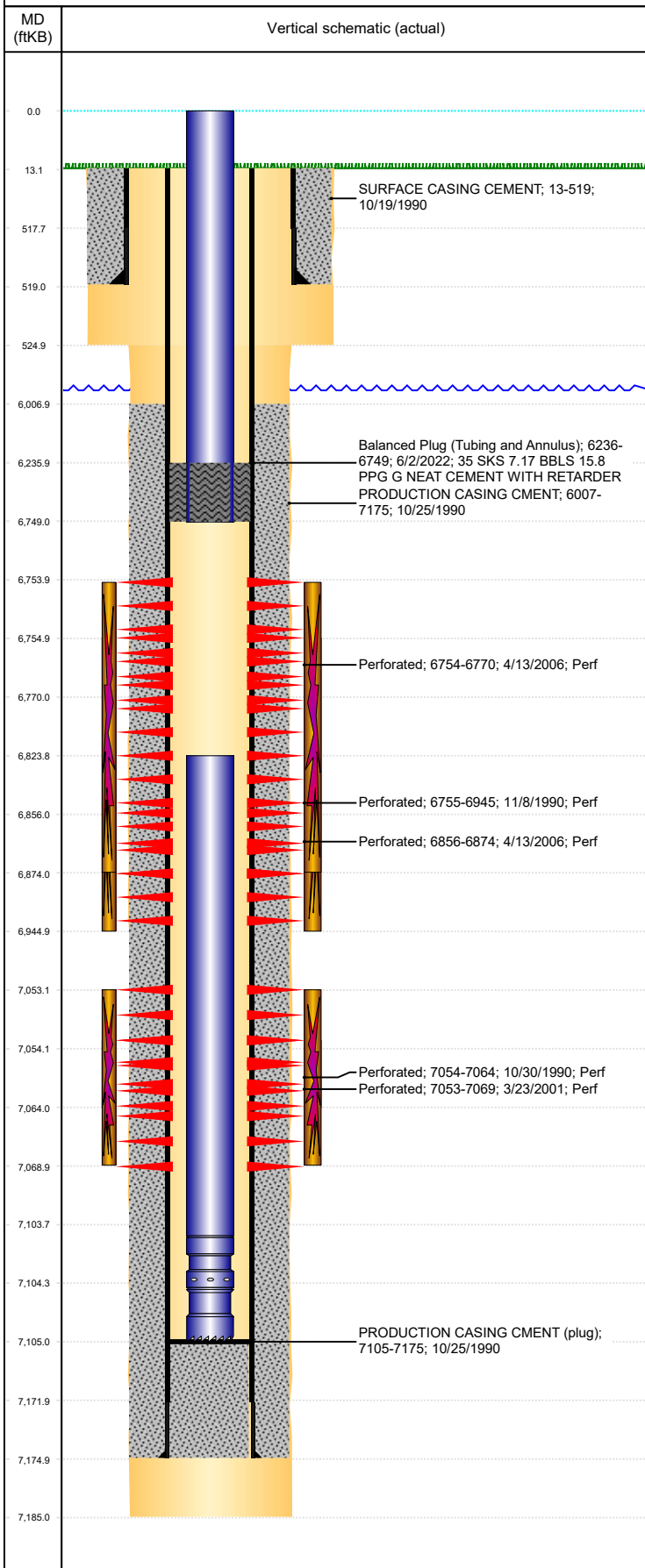




P&A Wellbore For State

Well Name: KLEIN 12-01

Land, Original Hole, 6/22/2022 3:16:52 PM



| Well Header | | | | | | | | | |
|--|-------------|----------------------------------|--------------------------|--------------------|--------------------------|-----------------------|-----------------------------|---------------------------------|-----------------------|
| Surface UWI 0512314775 | | | Business Unit Rockies | | | Gov Auth Dist | | Prod Tree Loc Land | |
| Orig. KB to Gnd (ft) 13.00 | | Original Spud Date 10/19/1990 | | Abandon Date | | Well Sub-Status TA | | | High... N |
| Comment CFP SET @ 6990' 7/2006; FRAC BAFFLE PUSHED TO 7093' | | | | | | | | | |
| Surface Location (Congressional) | | | | | | | | | |
| Qtr 3 SW | Qtr 4 NW | Section 12 | Twnshp 4 | Twnsh... N | Range 65 | Rng E/... W | Latitude (°) 40.32848546 | Longitude (°) -104.619130851 | |
| Wellbore Sections | | | | | | | | | |
| Section Des | | | Hole Size (in) | | | Act Top (ftKB) | | Act Btm (ftKB) | |
| SURFACE | | | 12 1/4 | | | 13.0 | | 525.0 | |
| PRODUCTION | | | 7 7/8 | | | 525.0 | | 7,185.0 | |
| Casing Strings | | | | | | | | | |
| Csg Des | | | Run Date | | OD (in) | Wt/Len (lb/ft) | Grade | Top Depth (MD) (ftKB) | Set Depth (MD) (ftKB) |
| Surface | | | 10/19/1990 | | 8 5/8 | 24.00 | J-55 | 13 | 519 |
| Production Casing | | | 10/25/1990 | | 4 1/2 | 11.60 | M-75 | 13 | 7175 |
| Cement | | | | | | | | | |
| Des | | | | | Start Date | | Top (ftKB) | | Btm (ftKB) |
| SURFACE CASING CEMENT | | | | | 10/19/1990 | | 13.0 | | 519.0 |
| PRODUCTION CASING CMENT | | | | | 10/25/1990 | | 6,007.0 | | 7,175.0 |
| Balanced Plug (Tubing and Annulus) | | | | | 6/2/2022 | | 6,236.0 | | 6,749.0 |
| Zone Statuses | | | | | | | | | |
| Zone Name | | Status Date | Status | Fluid Type | Job | | | | Prod Method |
| CODELL | | 4/7/2001 | PR | Gas | RE-FRAC, 3/22/2001 00:00 | | | | |
| CODELL | | 6/2/2022 | Closed | Gas | CIBP, 5/24/2022 00:00 | | | | |
| NIOBRARA | | 4/27/2006 | PR | Gas | RE-FRAC, 4/11/2006 00:00 | | | | |
| NIOBRARA | | 6/2/2022 | Closed | Gas | CIBP, 5/24/2022 00:00 | | | | |
| Perforation Data | | | | | | | | | |
| Linked Zone | | | Explosive Type | Entered Shot Total | Top (ftKB) | | Btm (ftKB) | | Date |
| NIOBRARA, Original Hole | | | | 96 | 6,754.0 | | 6,770.0 | | 4/13/2006 |
| NIOBRARA, Original Hole | | | | 28 | 6,755.0 | | 6,945.0 | | 11/8/1990 |
| NIOBRARA, Original Hole | | | | 108 | 6,856.0 | | 6,874.0 | | 4/13/2006 |
| CODELL, Original Hole | | | | 64 | 7,053.0 | | 7,069.0 | | 3/23/2001 |
| CODELL, Original Hole | | | | 41 | 7,054.0 | | 7,064.0 | | 10/30/1990 |
| Stimulation Intervals | | | | | | | | | |
| Zone | | | | Start Date | | Top (ftKB) | | Btm (ftKB) | |
| NIOBRARA, Original Hole | | | | 4/26/2006 | | 6,754.0 | | 6,874.0 | |
| NIOBRARA, Original Hole | | | | 11/12/1990 | | 6,755.0 | | 6,945.0 | |
| CODELL, Original Hole | | | | 4/3/2001 | | 7,053.0 | | 7,069.0 | |
| CODELL, Original Hole | | | | 11/3/1990 | | 7,054.0 | | 7,064.0 | |
| Other In Hole | | | | | | | | | |
| Run Date | | Des | | | Make | | OD (in) | Top (ftKB) | Btm (ftKB) |
| | | | | | | | | | |
| Logs | | | | | | | | | |
| Date | | Type | | | | | Depth Top (MD) (ftKB) | | Btm (ftKB) |
| 10/24/1990 | | GAMMA RAY | | | | | 3,640 | | 7,172.0 |
| 10/24/1990 | | INDUCTION | | | | | 519 | | 7,176.0 |
| 10/29/1990 | | CEMENT BOND | | | | | 5,800 | | 7,095.0 |
| 10/29/1990 | | PERFORATION | | | | | 6,600 | | 7,060.0 |
| 11/8/1990 | | | | | | | 6,620 | | 6,970.0 |
| 11/8/1990 | | PERFORATION | | | | | 6,620 | | 6,970.0 |
| Plug Back Total Depths | | | | | | | | | |
| Date | | Type | | | Com | | | | PBTD (ftKB) |
| 7/14/2006 | | PLUG | | | CFP | | | | 6,990 |
| 3/8/2011 | | FILL | | | | | | | 7,105 |