

Wellhead Closure Checklist

COGCC Rule 911.a.(4) Environmental Site Closure Assessment Field Form

Additional attachments (optional):	Pit Closure	Tank Battery Closure	Flowline Closure	Partially Buried Vault Closure
		1-11-22	1-17 / 1-18-22	1-11-22
Site Name & COGCC Facility Number: HSE-LDS A #10-8		Date: 11-22-21		Remediation Project #: 20298
Associated Wells: 1 05-123-18437		Age of Site: years		Number of Photos Attached: 1
Location: (GPS coordinates of wellhead or southeastern most wellhead for multiple)				Estimated Facility Size (acres):
40.237920 / -104.572290				
General Condition of Site: (General observations regarding housekeeping, corrosion, waste management, etc.)				
Overall good condition				
USCS Soil Type: SC/CL		Estimated Depth to Groundwater: ~10-15'		
Hydrocarbon Impacted Soils / Spills: (Note estimated size and if impact appears to be surficial or extends to an unknown depth)				
None observed				
Salt Crusted Soils or Impacted Vegetation: (Note estimated size and if impact appears to be surficial or extends to an unknown depth)				
None observed				
Wellhead(s)				
Well API	05-123-18437			
Age	years			
Condition of surface around wellhead	Good - Per Crew			
PID Readings	N/A - Excavated upon arrival			
Condition of subsurface (obtaining nearest PID Readings)	Good - no staining, no odor			
	9.3	8.7	7.8	8.0
Sample taken? Location/Sample ID#	WH-SS-01	WH-SS-02	WH-SS-03	WH-SS-04
Photo Number(s)	See photolog			
Other observations regarding wellheads:				
Pier cut/capped after assessment				
Summary				
Was impacted soil identified?				
No Yes - less than 10 cubic yards Yes - more than 10 cubic yards				
Total number of samples field screened:		Total number of samples collected:		
5		5		
Highest PID Reading:		Total number of samples submitted to lab for analysis:		
10-1		1		
If more than 10 cubic yards of impacted soil were observed:				
Vertical extent:		Estimated spill volume:		
Lateral extent:		Volume of soil removed:		
Is additional investigation required?				
N/A				
Was groundwater encountered during the investigation?				
No Yes - not impacted or in contact with impacted soils Yes - groundwater impacted and/or in contact with impacted soils				
Measured depth to groundwater:		Was remedial groundwater removal conducted?		
		Yes No		
Date Groundwater was encountered:		Commencement date of removal:		
Shewn on groundwater?		Volume of groundwater removed prior to sampling:		
Yes No				
Free product observed?		Volume of groundwater removed post sampling:		
Yes No				
Total number of samples collected:		Total Volume of groundwater removed:		
Total number of samples submitted to lab for analysis:				

Flowline Closure Checklist

COGCC Rule 911.a.(4) Environmental Site Closure Assessment Field Form

Additional Attachments:	Tank Battery Closure 1-11-22	Wellhead Closure 11-22-21	Pit Closure -	Partially Buried Vault Closure 1-11-22
Site Name & COGCC Facility Number: HSE-LDS A *10-8		Date: 1-17-22 / 1-18-22		Remediation Project #: 20298
Associated Wells: 1 05-123-18437		Age of Site: years		Number of Photos Attached: 14

Starting point: (GPS coordinates and descriptions)
At Well: 40.237728 / -104.572168

End point: (GPS coordinates and descriptions)
At Sq: 40.233156 / -104.574689

USCS Soil Type: **SC/CL** Estimated Depth to Groundwater: **~10-15'**

Hydrocarbon Impacted Soils / Spills: (Note estimated size and if impact appears to be surficial or extends to an unknown depth)
None observed

Salt Crusted Soils or Impacted Vegetation: (Note estimated size and if impact appears to be surficial or extends to an unknown depth)
None observed

Flowlines							
Flowline type	O, G, W						
Depth	~3-4'						
Age	years						
Length	~1900						
Construction Material	Steel						
Were flowlines pulled?	Yes						
Visual Integrity of lines	Good						
Visual impacts if trenching	None observed						
PID Readings if trenching	6-3	1.1 to 7.6					
Sample taken? Location/Sample ID#	TB-SS-02	FL-SS-01 thru FL-SS-13					
Photo Number(s)	See photo log						

Other observations regarding on location flowlines:
Terminus @ P.L.B collected during facility decom (TB-SS-02) associated w/ Com. 20302. 13 additional cut points / bellholes assessed during removal

Summary	
Was impacted soil identified?	No Yes - less than 10 cubic yards Yes - more than 10 cubic yards
Total number of samples field screened:	14
Highest PID Reading:	7.6
Total number of samples collected:	14
Total number of samples submitted to lab for analysis:	1
If more than 10 cubic yards of impacted soil were observed:	
Vertical extent:	Estimated spill volume:
Lateral extent:	Volume of soil removed:
Is additional investigation required? N/A	
Was groundwater encountered during the investigation?	No Yes - not impacted or in contact with impacted soils Yes - groundwater impacted and/or in contact with impacted soils
Measured depth to groundwater:	Was remedial groundwater removal conducted? Yes No
Date Groundwater was encountered:	Commencement date of removal:
Seen on groundwater? Yes No	Volume of groundwater removed prior to sampling:
Free product observed? Yes No	Volume of groundwater removed post sampling:
Total number of samples collected:	Total Volume of groundwater removed:
Total number of samples submitted to lab for analysis:	



FIGURES

Figure 1: Topographic Site Location Map

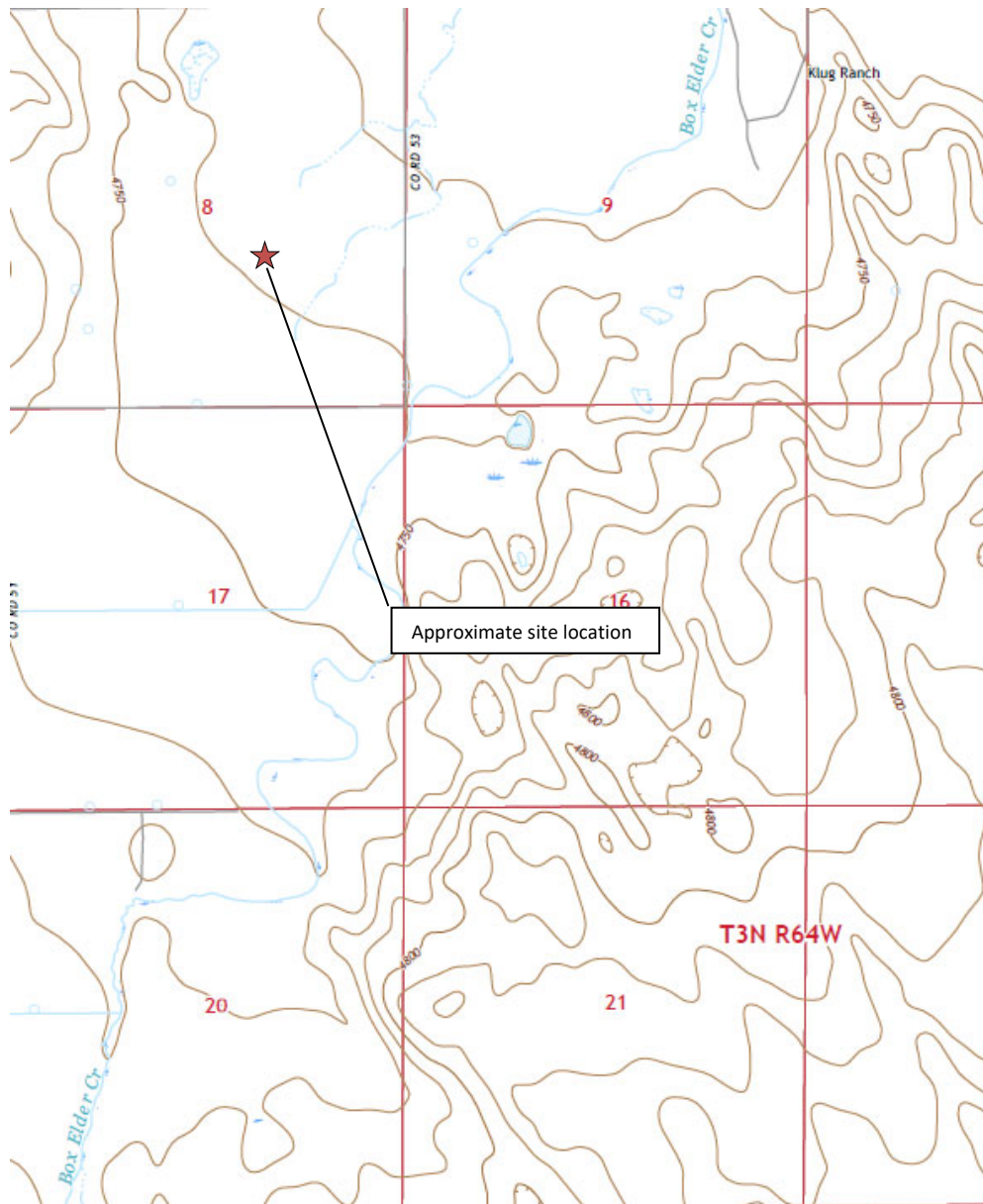
Figure 2: Aerial Site Location Map

Figure 3: Soil Analytical Map

Figure 4: Polycyclic Aromatic Hydrocarbons Map

Figure 5: Soil Analytical Map (Flowline Pt. B)

Figure 6: Polycyclic Aromatic Hydrocarbons Maps (Flowline Pt. B)



Topographic Site Location Map

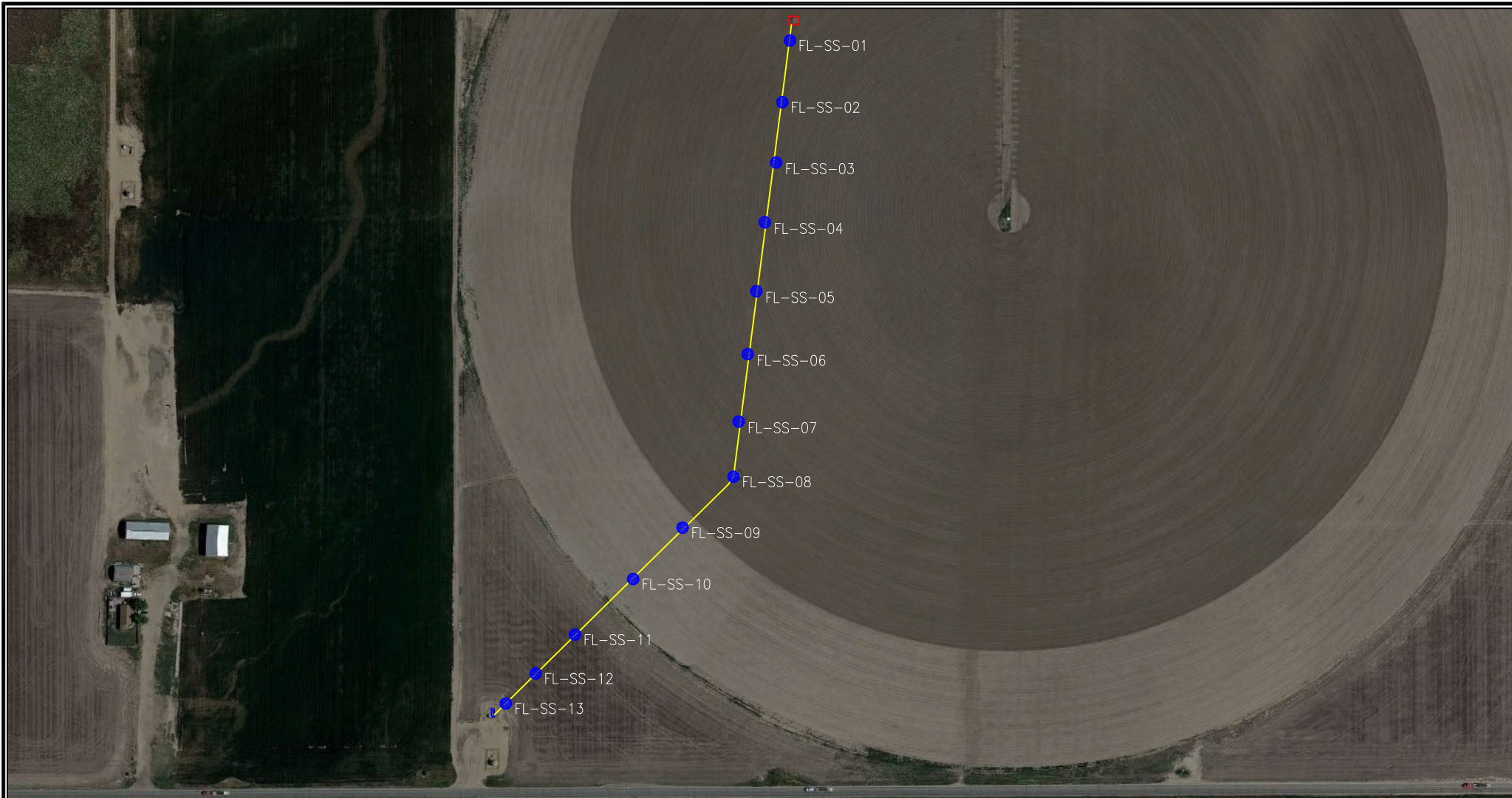
HSR-LDS A #10-8
 Closure Assessment
 40.237920 / -104.572290
 NW¼ SEC.8 T3N R64W 6PM
 Weld County, Colorado
 API # 05-123-18437
 Remediation # 20298



EAGLE
 ENVIRONMENTAL
 CONSULTING, INC.

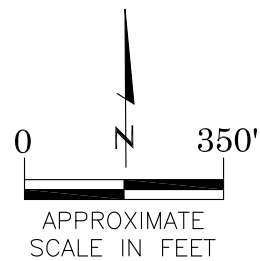
Source: USGS 7.5 Minute Topographic
 Map, Klug Ranch, CO Quadrangle 2019

Figure 1



LEGEND

- FORMER HSR-LDS A #10-8 WELLHEAD (PLUGGED AND ABANDONED)
- ASSOCIATED SEPARATOR (DECOMMISSIONED)
- APPROXIMATE FLOWLINE LOCATION (REMOVED)
- APPROXIMATE BELLHOLE/CUT POINTS FOR REMOVAL



AERIAL SITE LOCATION MAP

HSR-LDS A #10-8
CLOSURE ASSESSMENT
40.237920 / -104.572290
NW¼ SE¼ SEC.8 T3N R64W 6PM
WELD COUNTY, COLORADO
API # 05-123-18437
REMEDATION # 20298

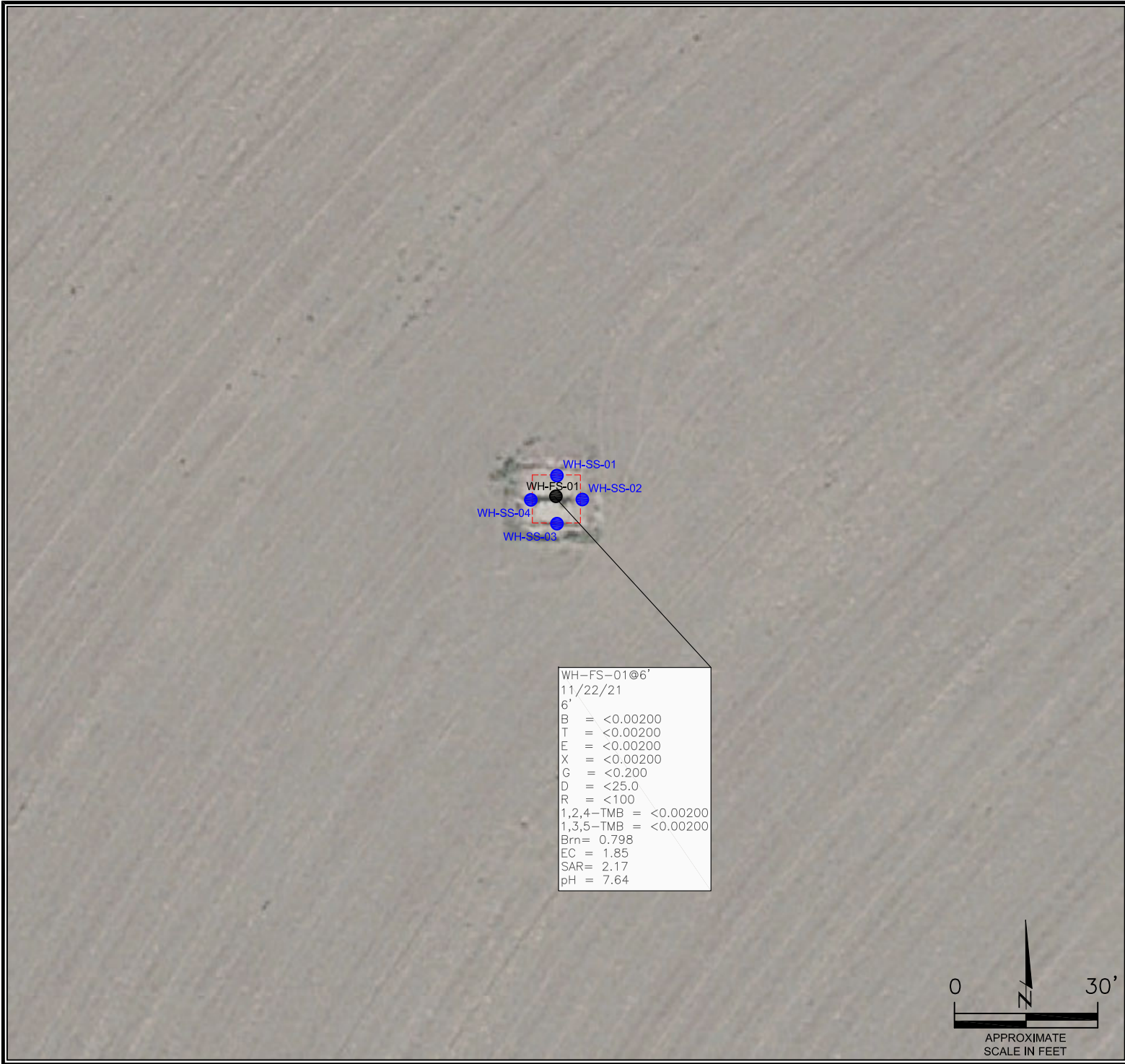
DATE: 03/29/22

FIG. NO.
2

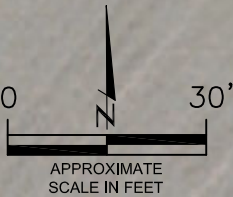
DRAWN BY:
AMN



EAGLE
ENVIRONMENTAL
CONSULTING, INC.
8000 W 44th Ave, Wheat Ridge, CO 80033
Ph: 303-433-0479 • F: 303-325-5449



WH-FS-01@6'
11/22/21
6'
B = <0.00200
T = <0.00200
E = <0.00200
X = <0.00200
G = <0.200
D = <25.0
R = <100
1,2,4-TMB = <0.00200
1,3,5-TMB = <0.00200
Brn= 0.798
EC = 1.85
SAR= 2.17
pH = 7.64



LEGEND

- INITIAL ASSESSMENT BOUNDARIES
- SS-02 APPROXIMATE LOCATION OF SOIL SAMPLES FIELD SCREENED, ONLY, WITH PHOTOIONIZATION DETECTOR
- SS-02 APPROXIMATE LOCATION OF SOIL SAMPLES SUBMITTED FOR LABORATORY ANALYSIS

PARAMETERS

SAMPLE LOCATION
DATE
DEPTH (FEET)
B = BENZENE (mg/kg)
T = TOLUENE (mg/kg)
E = ETHYLBENZENE (mg/kg)
X = TOTAL XYLENES (mg/kg)
G = TPH-GRO (mg/kg)
D = TPH-DRO (mg/kg)
R = TPH-RRO (mg/kg)
1,2,4-TMB = 1,2,4 TRIMETHYLBENZENE (mg/kg)
1,3,5-TMB = 1,3,5 TRIMETHYLBENZENE (mg/kg)
Brn= BORON (mg/L)
EC = SPECIFIC CONDUCTANCE (mmhos/cm)
SAR= SODIUM ADSORPTION RATIO
pH = pH (pH UNITS)

mg/kg = MILLIGRAMS PER KILOGRAM
mg/L = MILLIGRAMS PER LITER
mmhos/cm = MILLIMHOS PER CENTIMETER

TPH-GRO = TOTAL PETROLEUM HYDROCARBONS - GASOLINE RANGE ORGANICS
TPH-DRO = TOTAL PETROLEUM HYDROCARBONS - DIESEL RANGE ORGANICS
TPH-RRO = TOTAL PETROLEUM HYDROCARBONS - RESIDUAL RANGE ORGANICS

NOTES:
VALUES PRESENTED WITH A LESS THAN SYMBOL (<) DID NOT CONTAIN CONCENTRATIONS AT OR ABOVE LABORATORY DETECTION LIMITS

VALUES PRESENTED IN **BOLD** VALUES CONTAIN CONCENTRATIONS THAT EXCEED COGCC TABLE 915-1 REGULATORY LIMITS FOR THAT COMPOUND.

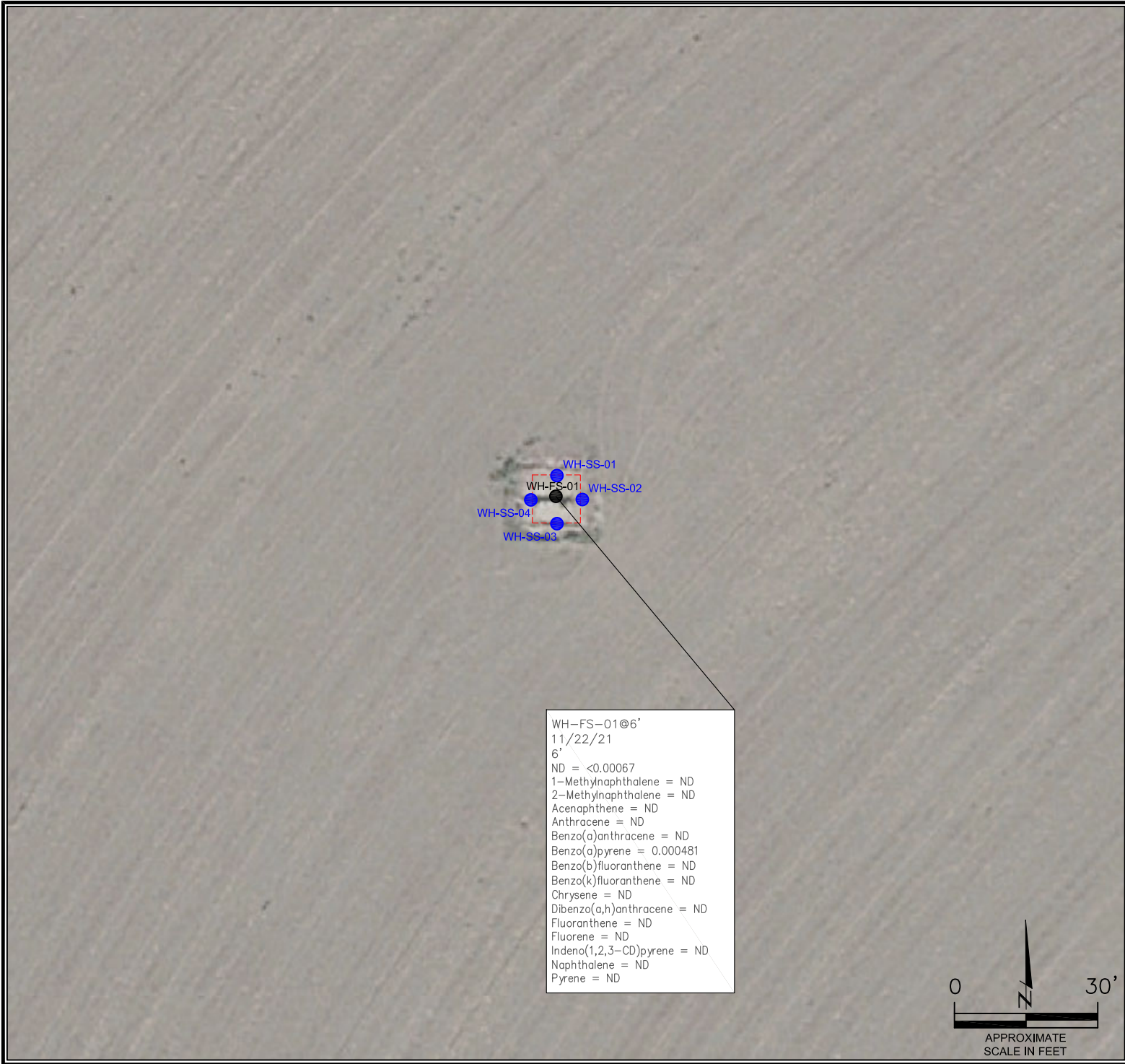
COGCC = COLORADO OIL AND GAS CONSERVATION COMMISSION

SOIL ANALYTICAL MAP
HSR-LDS A #10-8
CLOSURE ASSESSMENT
40.237920 / -104.572290
NW¼ SE¼ SEC.8 T3N R64W 6PM
WELD COUNTY, COLORADO
API # 05-123-18437
REMIADIATION # 20298

DATE:
03/29/22
DRAWN BY:
AMN
FIG.
NO. 3



EAGLE
ENVIRONMENTAL
CONSULTING, INC.
8000 W 44th Ave, Wheat Ridge, CO 80033
Ph: 303-433-0479 • F: 303-325-5449



WH-FS-01@6'
11/22/21
6'
ND = <0.00067
1-Methylnaphthalene = ND
2-Methylnaphthalene = ND
Acenaphthene = ND
Anthracene = ND
Benzo(a)anthracene = ND
Benzo(a)pyrene = 0.000481
Benzo(b)fluoranthene = ND
Benzo(k)fluoranthene = ND
Chrysene = ND
Dibenzo(a,h)anthracene = ND
Fluoranthene = ND
Fluorene = ND
Indeno(1,2,3-CD)pyrene = ND
Naphthalene = ND
Pyrene = ND

LEGEND

- INITIAL ASSESSMENT BOUNDARIES
- SS-02 APPROXIMATE LOCATION OF SOIL SAMPLES FIELD SCREENED, ONLY, WITH PHOTOIONIZATION DETECTOR
- SS-02 APPROXIMATE LOCATION OF SOIL SAMPLES SUBMITTED FOR LABORATORY ANALYSIS

PARAMETERS

SAMPLE LOCATION
DATE SAMPLE COLLECTED
APPROXIMATE DEPTH
POLYCYCLIC AROMATIC HYDROCARBONS (PAHs)

NOTE:
CONCENTRATIONS PRESENTED IN mg/kg

mg/kg = MILLIGRAMS PER KILOGRAM

ND = NON-DETECT

NOTE:
VALUES PRESENTED WITH A LESS THAN SYMBOL (<) DID NOT CONTAIN CONCENTRATIONS AT OR ABOVE LABORATORY DETECTION LIMITS

VALUES PRESENTED IN **BOLD** VALUES CONTAIN CONCENTRATIONS EXCEEDING COGCC TABLE 915-1 REGULATORY LIMITS.

VALUES PRESENTED WITH AN ASTERISK (*) EXCEED COGCC TABLE 915-1 GROUNDWATER SOIL SCREENING LEVELS FOR THAT COMPOUND

COGCC = COLORADO OIL AND GAS CONSERVATION COMMISSION

POLYCYCLIC AROMATIC HYDROCARBONS MAP

HSR-LDS A #10-8
CLOSURE ASSESSMENT
40.237920 / -104.572290
NW¼ SE¼ SEC.8 T3N R64W 6PM
WELD COUNTY, COLORADO
API # 05-123-18437
REMEDIATION # 20298

DATE:
03/29/22

DRAWN BY:
AMN

FIG.
NO. 4



EAGLE
ENVIRONMENTAL
CONSULTING, INC.

8000 W 44th Ave, Wheat Ridge, CO 80033
Ph: 303-433-0479 • F: 303-325-5449



TB-SS-02@5'
01/11/22
5'
B = <0.00200
T = <0.00200
E = <0.00200
X = <0.00200
G = <0.200
D = <25.0
R = <100
1,2,4-TMB = <0.00200
1,3,5-TMB = <0.00200
Brn= 0.317
EC = 0.403
SAR= 0.746
pH = 8.06

LEGEND

● APPROXIMATE LOCATION OF SOIL SAMPLE*
SS-02 SUBMITTED FOR LABORATORY ANALYSIS

*SAMPLE COLLECTED DURING FACILITY DECOMMISSIONING
ACTIVITIES ASSOCIATED WITH REMEDIATION # 20306

PARAMETERS

SAMPLE LOCATION
DATE
DEPTH (FEET)
B = BENZENE (mg/kg)
T = TOLUENE (mg/kg)
E = ETHYLBENZENE (mg/kg)
X = TOTAL XYLENES (mg/kg)
G = TPH-GRO (mg/kg)
D = TPH-DRO (mg/kg)
R = TPH-RRO (mg/kg)
1,2,4-TMB = 1,2,4 TRIMETHYLBENZENE (mg/kg)
1,3,5-TMB = 1,3,5 TRIMETHYLBENZENE (mg/kg)
Brn= BORON (mg/L)
EC = SPECIFIC CONDUCTANCE (mmhos/cm)
SAR= SODIUM ADSORPTION RATIO
pH = pH (pH UNITS)

mg/kg = MILLIGRAMS PER KILOGRAM
mg/L = MILLIGRAMS PER LITER
mmhos/cm = MILLIMHOS PER CENTIMETER

TPH-GRO = TOTAL PETROLEUM HYDROCARBONS - GASOLINE
RANGE ORGANICS
TPH-DRO = TOTAL PETROLEUM HYDROCARBONS - DIESEL
RANGE ORGANICS
TPH-RRO = TOTAL PETROLEUM HYDROCARBONS - RESIDUAL
RANGE ORGANICS

NOTE: VALUES PRESENTED WITH A LESS THAN SYMBOL (<)
DID NOT CONTAIN CONCENTRATIONS AT OR ABOVE
LABORATORY DETECTION LIMITS

VALUES PRESENTED IN **BOLD** VALUES CONTAIN
CONCENTRATIONS EXCEEDING COGCC TABLE 915-1
GROUNDWATER SOIL SCREENING LEVELS FOR THAT COMPOUND

COGCC = COLORADO OIL AND GAS CONSERVATION
COMMISSION

SOIL ANALYTICAL MAP
(FLOWLINE P.T. B)
HSR-LDS A #10-8
CLOSURE ASSESSMENT
40.237920 / -104.572290
NW¼ SE¼ SEC.8 T3N R64W 6PM
WELD COUNTY, COLORADO
API # 05-123-18437
REMEDATION # 20298

DATE:
03/29/22

DRAWN BY:
AMN

FIG.
NO. 5



EAGLE
ENVIRONMENTAL
CONSULTING, INC.
8000 W 44th Ave, Wheat Ridge, CO 80033
Ph: 303-433-0479 • F: 303-325-5449



LEGEND

● APPROXIMATE LOCATION OF SOIL SAMPLE*
SS-02 SUBMITTED FOR LABORATORY ANALYSIS

*SAMPLE COLLECTED DURING FACILITY DECOMMISSIONING
ACTIVITIES ASSOCIATED WITH REMEDIATION # 20306

PARAMETERS

SAMPLE LOCATION
DATE SAMPLE COLLECTED
APPROXIMATE DEPTH

POLYCYCLIC AROMATIC HYDROCARBONS (PAHs)

NOTE:
CONCENTRATIONS PRESENTED IN mg/kg

mg/kg = MILLIGRAMS PER KILOGRAM

ND = NON-DETECT

NOTE:
VALUES PRESENTED WITH A LESS THAN SYMBOL (<) DID NOT
CONTAIN CONCENTRATIONS AT OR ABOVE LABORATORY
REPORTING LIMITS

VALUES PRESENTED IN **BOLD** VALUES CONTAIN
CONCENTRATIONS EXCEEDING COGCC TABLE 915-1
REGULATORY LIMITS.

COGCC = COLORADO OIL AND GAS CONSERVATION COMMISSION

POLYCYCLIC AROMATIC HYDROCARBONS MAP
(FLOWLINE PT. B)
HSR-LDS A #10-8
CLOSURE ASSESSMENT
40.237920 / -104.572290
NW¼ SE¼ SEC.8 T3N R64W 6PM
WELD COUNTY, COLORADO
API # 05-123-18437
REMEDATION # 20298

DATE:
03/29/22
DRAWN BY:
AMN
FIG.
NO. 6



EAGLE
ENVIRONMENTAL
CONSULTING, INC.
8000 W 44th Ave, Wheat Ridge, CO 80033
Ph: 303-433-0479 • F: 303-325-5449



TABLES

Table 1: Photoionization Detector Reading Summary

Table 2: Soil Analytical Results Summary

Table 3: Polycyclic Aromatic Hydrocarbons Analytical Results Summary

TABLE 1
PID READING SUMMARY
HSR-LDS A #10-8
CLOSURE ASSESSMENT
40.237920 / -104.572290
NW1/4 SE1/4 SEC.8 T3N R64W 6PM
WELD COUNTY, COLORADO
API # 05-123-18437
REMEDIALTION # 20298

Sample Location (Latitude/Longitude)	Date	Approximate Depth (feet)	PID Reading (ppm-v)	Lab Submission (Y/N)
WH-SS-01 @ 4' (40.237714 / -104.572161)	11/22/2021	4	9.3	N
WH-SS-02 @ 4' (40.237696 / -104.572134)	11/22/2021	4	8.7	N
WH-SS-03 @ 4' (40.237682 / -104.572159)	11/22/2021	4	7.8	N
WH-SS-04 @ 4' (40.237694 / -104.572186)	11/22/2021	4	8	N
WH-FS-01 @ 6' (40.237695 / -104.572157)	11/22/2021	6	10.1	Y
*TB-SS-02 @ 5' (40.233141 / -104.574729)	1/11/2022	5	6.3	Y
FL-SS-01 @ 2.5' (40.237401 / -104.572228)	1/17/2022	2.5	3.7	N
FL-SS-02 @ 2.5' (40.237101 / -104.572274)	1/17/2022	2.5	3.3	N
FL-SS-03 @ 2.5' (40.236633 / -104.572361)	1/18/2022	2.5	2.9	N
FL-SS-04 @ 2.5' (40.236180 / -104.572436)	1/18/2022	2.5	4.9	N
FL-SS-05 @ 2.5' (40.235860 / -104.572490)	1/18/2022	2.5	6.8	N
FL-SS-06 @ 2.5' (40.235538 / -104.572552)	1/18/2022	2.5	5.2	N
FL-SS-07 @ 2.5' (40.235058 / -104.572637)	1/18/2022	2.5	7.4	N
FL-SS-08 @ 3' (40.234712 / -104.572697)	1/18/2022	3	3.4	N
FL-SS-09 @ 3' (40.234385 / -104.573101)	1/18/2022	3	6.1	N
FL-SS-10 @ 3' (40.234009 / -104.573598)	1/18/2022	3	5.9	N
FL-SS-11 @ 3' (40.233636 / -104.574072)	1/18/2022	3	6.4	N
FL-SS-12 @ 3' (40.233395 / -104.574384)	1/18/2022	3	4.1	N
FL-SS-13 @ 3' (40.233204 / -104.574629)	1/18/2022	3	7.6	N
(Y/N) = Yes or No ppm-v = parts per million by volume PID = Photoionization Detector				
*Sample collected during facility decommissioning activities associated with Rem. # 20306				

TABLE 2
SOIL ANALYTICAL RESULTS SUMMARY
HSR-LDS A #10-8
CLOSURE ASSESSMENT
40.237920 / -104.572290
NW1/4 SE1/4 SEC.8 T3N R64W 6PM
WELD COUNTY, COLORADO
API # 05-123-18437
REMEDATION # 20298

Sample Location (Latitude/Longitude)	Date	Approximate Depth (feet)	PID Reading (ppm-v)	Benzene (mg/kg)	Toluene (mg/kg)	Ethylbenzene (mg/kg)	Total Xylenes (mg/kg)	TPH-GRO (mg/kg)	TPH-DRO (mg/kg)	TPH-RRO (mg/kg)	1,2,4-TMB (mg/kg)	1,3,5-TMB (mg/kg)	Boron (mg/L)	Specific Conductance (mmhos/cm)	pH (pH units)	SAR
COGCC Table 915-1 Residential Screening Levels (mg/kg)				1.20	490	5.8	58	500			30	27	2	<4	6-8.3	<6
COGCC Table 915-1 Protection of Groundwater Soil Screening Levels				0.0026	0.69	0.78	9.9	--			0.0081	0.0087	--	--	--	--
WH-FS-01 @ 6' (40.237695 / -104.572157)	11/22/2021	6	10.1	<0.00200	<0.00200	<0.00200	<0.00200	<0.200	<25.0	<100	<0.00200	<0.00200	0.798	1.85	7.64	2.17
*TB-SS-02 @ 5' (40.233141 / -104.574729)	1/11/2022	5	6.3	<0.00200	<0.00200	<0.00200	<0.00200	<0.200	<25.0	<100	<0.00200	<0.00200	0.317	0.403	8.06	0.746

COGCC = Colorado Oil and Gas Conservation Commission
mg/kg = milligrams per kilogram
mmhos/cm = millimhos per centimeter
PID = Photoionization Detector
ppm-v = parts per million by volume
mg/L = milligrams per liter
SAR = Sodium Adsorption Ratio

TPH-GRO = Total Petroleum Hydrocarbons - Gasoline Range Organics
TPH-DRO = Total Petroleum Hydrocarbons - Diesel Range Organics
TPH-RRO = Total Petroleum Hydrocarbons - Residual Range Organics

1,2,4-TMB = 1,2,4-Trimethylbenzene
1,3,5-TMB = 1,3,5-Trimethylbenzene

MDL = Minimum Detection Limits
NA = Not Analyzed

Note: Values presented with a less than symbol (<) did not contain concentrations at or above the laboratory MDL and/or reporting limit.

Note: Values presented in **BOLD** contained concentrations exceeding COGCC Table 915-1 Regulatory Limits. Values presented with asterisk (*) exceed COGCC Table 915-1 Protection of Groundwater Soil Screening Levels for that compound

TABLE 3
PAH ANALYTICAL RESULTS SUMMARY
HSR-LDS A #10-8
CLOSURE ASSESSMENT
40.237920 / -104.572290
NW1/4 SE1/4 SEC.8 T3N R64W 6PM
WELD COUNTY, COLORADO
API # 05-123-18437
REMEDATION # 20298

Sample Location (Latitude/Longitude)	Date	Approximate Depth (feet)	PID Reading (ppm- v)	1-Methyl- naphthalene (mg/kg)	2-Methyl-naphthalene (mg/kg)	Acenaphthene (mg/kg)	Anthracene (mg/kg)	Benzo(a)-anthracene (mg/kg)	Benzo(a)- pyrene (mg/kg)	Benzo(b)- fluoranthene (mg/kg)	Benzo(k)- fluoranthene (mg/kg)	Chrysene (mg/kg)	Dibenzo(a,h)- anthracene (mg/kg)	Fluoranthene (mg/kg)	Fluorene (mg/kg)	Indeno(1,2,3- cd)-pyrene (mg/kg)	Naphthalene (mg/kg)	Pyrene (mg/kg)
COGCC Table 915-1 Residential Screening Levels				18	24	360	1,800	1.1	0.11	1.1	11	110	0.11	240	240	1.1	2	180
COGCC Table 915-1 Protection of Groundwater Soil Screening Levels				0.006	0.019	0.55	5.8	0.011	0.24	0.3	2.9	9	0.096	8.9	0.54	0.98	0.0038	1.3
WH-FS-01 @ 6' (40.237695 / -104.572157)	11/22/2021	6	10.1	<0.00067	<0.00067	<0.00067	<0.00067	<0.00067	0.000481	<0.00067	<0.00067	<0.00067	<0.00067	<0.00067	<0.00067	<0.00067	<0.00067	<0.00067
*TB-SS-02 @ 5' (40.233141 / -104.574729)	1/11/2022	5	6.3	<0.00067	<0.00067	<0.00067	<0.00067	<0.00067	<0.00067	<0.00067	<0.00067	<0.00067	<0.00067	<0.00067	<0.00067	<0.00067	<0.00067	<0.00067
COGCC = Colorado Oil and Gas Conservation Commission mg/kg = milligrams per kilogram ppm-v = parts per million by volume PID = Photoionization Detector MDL = Minimum Detection Limit Note: Values presented with a less than symbol (<) did not contain concentrations at or above the laboratory MDL and/or reporting limit. Note: Values presented in BOLD contained concentrations exceeding COGCC Table 915-1 Regulatory Limits. Values presented with asterisk (*) exceed COGCC Table 915-1 Protection of Groundwater Soil Screening Levels for that compound.																		



ATTACHMENT A

Photo Log

HSR-LDS A #10-8 API # 05-123-18437 Remediation # 20298

Closure Assessment

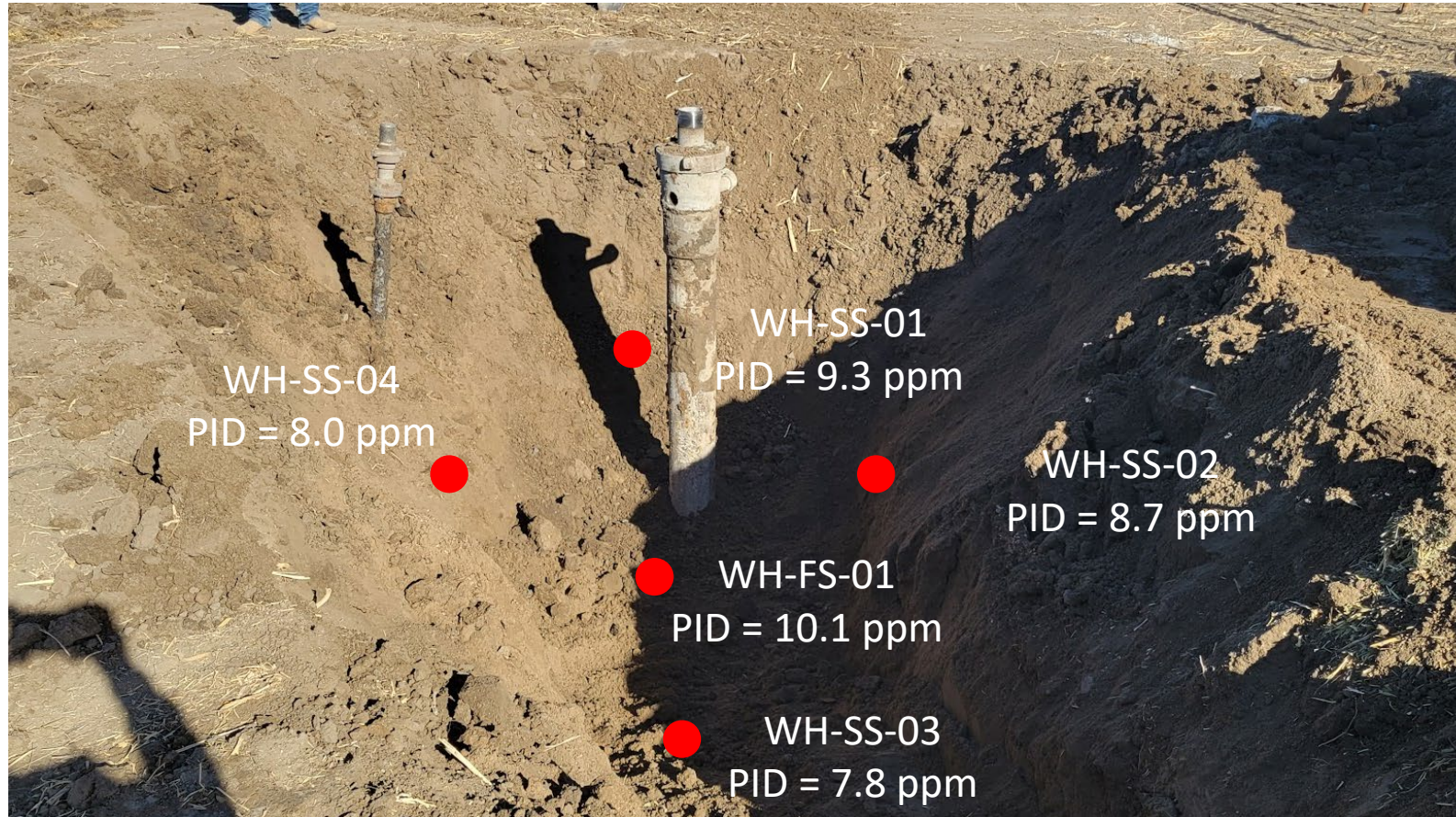
November 2021 – January 2022



EAGLE
ENVIRONMENTAL
CONSULTING, INC.
8000 W 44th Ave, Wheat Ridge, CO 80033
Ph: 303-433-0479 • F: 303-325-5449



Wellhead Excavation – 11/22/21



Looking north
No petroleum hydrocarbon staining or odor observed

Tank Battery Decommissioning – 01/11/22



Looking south

Pt. B (at separator) collected during facility decommissioning activities associated with Rem. # 20306

No petroleum hydrocarbon odor or staining observed in soil

Flowline Removal – 01/17/22 & 01/18/22



Cut-points/bell-holes field-screened
No petroleum hydrocarbon staining or odor observed
Samples collected:
FL-SS-01@2.5' – 3.7 ppm-v
FL-SS-02@2.5' – 3.3 ppm-v
FL-SS-03@2.5' – 2.9 ppm-v

Flowline Removal – 01/18/22



Cut-points/bell-holes field-screened
No petroleum hydrocarbon staining or odor observed
Samples collected:
FL-SS-04@2.5' – 4.9 ppm-v
FL-SS-05@2.5' – 6.8 ppm-v
FL-SS-06@2.5' – 5.2 ppm-v

Flowline Removal – 01/18/22



Cut-points/bell-holes field-screened
No petroleum hydrocarbon staining or odor observed
Samples collected:
FL-SS-07@2.5' – 7.4 ppm-v
FL-SS-08@3' – 3.4 ppm-v
FL-SS-09@3' – 6.1 ppm-v

Flowline Removal – 01/18/22



Cut-points/bell-holes field-screened
No petroleum hydrocarbon staining or odor observed
Samples collected:
FL-SS-10@3' – 5.9 ppm-v
FL-SS-11@3' – 6.4 ppm-v
FL-SS-12@3' – 4.1 ppm-v

Flowline Removal – 01/18/22



Cut-points/bell-holes field-screened
No petroleum hydrocarbon staining or odor observed
Sample collected:
FL-SS-10@3' – 7.6 ppm-v



ATTACHMENT B

Laboratory Analytical Reports*

***Flowline Pt. B sample collected during decommissioning activities associated with Rem. #20306.**

Sample included on lab report for battery – See TB-SS-02@5'



December 06, 2021

Eagle Environmental Consulting, Inc.

Martin C Eckert III

8000 W 44th Ave

Wheat Ridge CO 80033

Project Name - Noble - HSR-LDS A #10-8

Project Number - [none]

Attached are your analytical results for Noble - HSR-LDS A #10-8 received by Origins Laboratory, Inc. November 22, 2021. This project is associated with Origins project number Y111440-01.

The analytical results in the following report were analyzed under the guidelines of EPA Methods. These methods are identified as follows; "SW" are defined in SW-846, "EPA" are defined in 40CFR part 136 and "SM" are defined in the most current revision of Standard Methods For the Examination of Water and Wastewater.

The analytical results apply specifically to the samples and analyses specified per the attached Chain of Custody. As such, this report shall not be reproduced except in full, without the written approval of Origin's laboratory.

Unless otherwise noted, the analytical results for all soil samples are reported on a wet weight basis. All analytical analyses were performed under NELAP guidelines unless noted by a data qualifier.

Any holding time exceedances, deviations from the method specifications or deviations from Origins Laboratory's Standard Operating Procedures are outlined in the case narrative.

Thank you for selecting Origins for your analytical needs. Please contact us with any questions concerning this report, or if we can help with anything at all.

Origins Laboratory, Inc.
303.433.1322
o-squad@oelabinc.com



1725 Elk Place, Denver, CO 80211 | Phone: 303.433.1322 | Fax: 303.265.9645

Eagle Environmental Consulting, Inc.

8000 W 44th Ave

Wheat Ridge CO 80033

Martin C Eckert III

Project Number: [none]

Project: Noble - HSR-LDS A #10-8

CROSS REFERENCE REPORT

Sample ID	Laboratory ID	Matrix	Date Sampled	Date Received
WH-FS-01@6'	Y111440-01	Soil	November 22, 2021 11:08	11/22/2021 12:35

Origins Laboratory, Inc.



The results in this report apply to the samples analyzed in accordance with the chain of custody document. This analytical report must be reproduced in its entirety.

Eagle Environmental Consulting, Inc.

8000 W 44th Ave

Wheat Ridge CO 80033

Martin C Eckert III

Project Number: [none]

Project: Noble - HSR-LDS A #10-8

Origins Laboratory

F-012207-01-R1
Effective Date: 01/09/12

Sample Receipt Checklist

Origins Work Order: Y111440

Client: Eagle

Client Project ID: HSR LDS A 10-8

Checklist Completed by: JG

Shipped Via: HD

(UPS, FedEx, Hand Delivered, Pick-up, etc.)

Date/time completed: 11/22/21

Airbill #: N/A

Matrix(s) Received: (Check all that apply): ☒ Soil/Solid

☐ Water

☐ Other:

(Describe)

Cooler Number/Temperature: 114.9 °C

1 °C

1 °C

1 °C

1 °C

Thermometer ID: T003

Requirement Description	Yes	No	N/A	Comments (if any)
If samples require cooling, was the temperature between 0°C to ≤ 6°C ⁽¹⁾ ?	<input checked="" type="checkbox"/>	<input type="checkbox"/>	<input type="checkbox"/>	
Is there ice present (document if blue ice is used)	<input checked="" type="checkbox"/>	<input type="checkbox"/>	<input type="checkbox"/>	
Are custody seals present on cooler? (if so, document in comments if they are signed and dated, broken or intact)	<input type="checkbox"/>	<input checked="" type="checkbox"/>	<input type="checkbox"/>	
Are custody seals present on each sample container? (if so, document in comments if they are signed and dated, broken or intact)	<input type="checkbox"/>	<input checked="" type="checkbox"/>	<input type="checkbox"/>	
Were all samples received intact ⁽¹⁾ ?	<input checked="" type="checkbox"/>	<input type="checkbox"/>	<input type="checkbox"/>	
Was adequate sample volume provided ⁽¹⁾ ?	<input checked="" type="checkbox"/>	<input type="checkbox"/>	<input type="checkbox"/>	
Are short holding time analytes or samples with HTs due within 48 hours present ⁽¹⁾ ?	<input type="checkbox"/>	<input checked="" type="checkbox"/>	<input type="checkbox"/>	
Is a chain-of-custody (COC) present and filled out completely ⁽¹⁾ ?	<input checked="" type="checkbox"/>	<input type="checkbox"/>	<input type="checkbox"/>	
Does the COC agree with the number and type of sample bottles received ⁽¹⁾ ?	<input checked="" type="checkbox"/>	<input type="checkbox"/>	<input type="checkbox"/>	
Do the sample IDs on the bottle labels match the COC ⁽¹⁾ ?	<input checked="" type="checkbox"/>	<input type="checkbox"/>	<input type="checkbox"/>	
Is the COC properly relinquished by the client with date and time recorded ⁽¹⁾ ?	<input checked="" type="checkbox"/>	<input type="checkbox"/>	<input type="checkbox"/>	
For volatiles in water – is there headspace (> ¼ inch bubble) present? If yes, contact client and note in narrative.	<input type="checkbox"/>	<input type="checkbox"/>	<input checked="" type="checkbox"/>	
Are samples preserved that require preservation and was it checked ⁽¹⁾ ? (note ID of confirmation instrument used in comments) / (preservation is not confirmed for subcontracted analyses in order to insure sample integrity)/(pH < 2 for samples preserved with HNO ₃ , HCl, H ₂ SO ₄) / (pH > 10 for samples preserved with NaAsO ₂ +NaOH, ZnAc+NaOH)	<input type="checkbox"/>	<input type="checkbox"/>	<input checked="" type="checkbox"/>	
Additional Comments (if any):				

⁽¹⁾If NO, then contact the client before proceeding with analysis and note date/time and person contacted as well as the corrective action to in the additional comments (above) and the case narrative.

Reviewed by (Project Manager) Jm

11-23-21
Date/Time Reviewed

Origins Laboratory, Inc.

The results in this report apply to the samples analyzed in accordance with the chain of custody document. This analytical report must be reproduced in its entirety.

Eagle Environmental Consulting, Inc.
8000 W 44th Ave
Wheat Ridge CO 80033

Martin C Eckert III
Project Number: [none]
Project: Noble - HSR-LDS A #10-8

WH-FS-01@6'

11/22/2021 11:08:00AM

Analyte	Result	Min Detection Limit	Reporting Limit	Units	Dilution	Batch	Prepared	Analyzed	Notes
---------	--------	---------------------	-----------------	-------	----------	-------	----------	----------	-------

Origins Laboratory, Inc.
Y111440-01 (Soil)

Boron (DTPA Sorbitol)

Boron	0.798	0.199	mg/L	1	B1K2215	11/22/2021	11/23/2021	
-------	-------	-------	------	---	---------	------------	------------	--

DRO/ORO by EPA 8015D

Diesel (C10-C28)	ND	25.0	mg/kg	1	B1K3022	11/30/2021	12/02/2021	U
Residual Range Organics (C28-C40)	ND	100	"	"	"	"	"	U

Surrogate: o-Terphenyl	65.3 %	50-150	"	"	"	"	"
------------------------	--------	--------	---	---	---	---	---

GBTEX+TMBs

1,2,4-Trimethylbenzene	ND	0.00200	mg/kg	1	B1K2402	11/24/2021	11/29/2021	U
1,3,5-Trimethylbenzene	ND	0.00200	"	"	"	"	"	U
Benzene	ND	0.00200	"	"	"	"	"	U
Ethylbenzene	ND	0.00200	"	"	"	"	"	U
Toluene	ND	0.00200	"	"	"	"	"	U
Gasoline Range Hydrocarbons	ND	0.200	"	"	"	"	"	U
Xylenes, total	ND	0.00200	"	"	"	"	"	U

Surrogate: 1,2-Dichloroethane-d4	107 %	70-130	"	"	"	"	"
----------------------------------	-------	--------	---	---	---	---	---

Origins Laboratory, Inc.



The results in this report apply to the samples analyzed in accordance with the chain of custody document. This analytical report must be reproduced in its entirety.

Eagle Environmental Consulting, Inc.
8000 W 44th Ave
Wheat Ridge CO 80033

Martin C Eckert III
Project Number: [none]
Project: Noble - HSR-LDS A #10-8

WH-FS-01@6'

11/22/2021 11:08:00AM

Analyte	Result	Min Detection Limit	Reporting Limit	Units	Dilution	Batch	Prepared	Analyzed	Notes
---------	--------	---------------------	-----------------	-------	----------	-------	----------	----------	-------

Origins Laboratory, Inc.
Y111440-01 (Soil)

GBTEX+TMBs

Surrogate: Toluene-d8	92.2 %		70-130			B1K24 02	11/24/2021	11/29/2021	
Surrogate: 4-Bromofluorobenzene	98.1 %		70-130			"	"	"	

Metals by Saturated Paste

Calcium	12.3		0.499	meq/L	10	[CALC]	11/22/2021	11/23/2021	
Magnesium	3.68		0.823	"	"	"	"	"	
Sodium	6.14		0.435	"	"	"	"	"	

PAH by 8270D SIM

1-Methylnaphthalene	ND	0.00033	0.00067	mg/Kg	1	L587000	11/29/2021	11/29/2021	
2-Methylnaphthalene	ND	0.00039	0.00067	"	"	"	"	"	
Acenaphthene	ND	0.0003	0.00067	"	"	"	"	"	
Anthracene	ND	0.00033	0.00067	"	"	"	"	"	
Benzo(a)anthracene	ND	0.00041	0.00067	"	"	"	"	"	
Benzo(a)pyrene	0.000481	0.00014	0.00067	"	"	"	"	"	JB
Benzo(b)fluoranthene	ND	0.00021	0.00067	"	"	"	"	"	
Benzo(k)fluoranthene	ND	0.00013	0.00067	"	"	"	"	"	
Chrysene	ND	0.00027	0.00067	"	"	"	"	"	
Dibenz(a,h)anthracene	ND	0.00036	0.00067	"	"	"	"	"	
Fluoranthene	ND	0.00039	0.00067	"	"	"	"	"	

Origins Laboratory, Inc.

The results in this report apply to the samples analyzed in accordance with the chain of custody document. This analytical report must be reproduced in its entirety.

Eagle Environmental Consulting, Inc.
8000 W 44th Ave
Wheat Ridge CO 80033

Martin C Eckert III
Project Number: [none]
Project: Noble - HSR-LDS A #10-8

WH-FS-01@6'

11/22/2021 11:08:00AM

Analyte	Result	Min Detection Limit	Reporting Limit	Units	Dilution	Batch	Prepared	Analyzed	Notes
---------	--------	---------------------	-----------------	-------	----------	-------	----------	----------	-------

Waypoint Analytical, Inc.
Y111440-01 (Soil)

PAH by 8270D SIM

Fluorene	ND	0.00029	0.00067	mg/Kg	1	L587000	11/29/2021	11/29/2021
Indeno(1,2,3-cd)pyrene	ND	0.00029	0.00067	"	"	"	"	"
Naphthalene	ND	0.000467	0.00067	"	"	"	"	"
Pyrene	ND	0.00059	0.00067	"	"	"	"	"

Surrogate: 2-Fluorobiphenyl	54.4 %	33-115	"	"	"
Surrogate: 4-Terphenyl-d14	65.4 %	33-122	"	"	"
Surrogate: Nitrobenzene-d5	43.4 %	29-110	"	"	"

pH in Soil by 9045D

pH	7.64	pH Units	1	B1K2216	11/22/2021	11/23/2021
----	------	----------	---	---------	------------	------------

SAR by 20B Saturated Paste

SAR	2.17	SAR	1	B1K2211	11/22/2021	11/23/2021
-----	------	-----	---	---------	------------	------------

Specific Conductance Mod. 9050A

Specific Conductance (EC)	1.85	0.00500	mmhos/cm	1	B1K2217	11/22/2021	11/23/2021
---------------------------	------	---------	----------	---	---------	------------	------------

Origins Laboratory, Inc.



The results in this report apply to the samples analyzed in accordance with the chain of custody document. This analytical report must be reproduced in its entirety.

Eagle Environmental Consulting, Inc.
8000 W 44th Ave
Wheat Ridge CO 80033

Martin C Eckert III
Project Number: [none]
Project: Noble - HSR-LDS A #10-8

Volatile Organic Compounds by GC/MS SW846 8260D - Quality Control
Origins Laboratory, Inc.

Analyte	Result	Reporting Limit	Units	Spike Level	Source Result	%REC	%REC Limits	RPD	RPD Limit	Notes
Batch B1K2402 - EPA 5030 (soil)										
Blank (B1K2402-BLK1)					Prepared: 11/24/2021 Analyzed: 11/29/2021					
1,2,4-Trimethylbenzene	ND	0.00200	mg/kg							U
Naphthalene	ND	0.0100	"							U
1,3,5-Trimethylbenzene	ND	0.00200	"							U
Benzene	ND	0.00200	"							U
Ethylbenzene	ND	0.00200	"							U
Toluene	ND	0.00200	"							U
Gasoline Range Hydrocarbons	ND	0.200	"							U
Xylenes, total	ND	0.00200	"							U
Surrogate: 1,2-Dichloroethane-d4	0.13		"	0.125	103		70-130			
Surrogate: Toluene-d8	0.12		"	0.125	94.6		70-130			
Surrogate: 4-Bromofluorobenzene	0.12		"	0.125	99.0		70-130			

Origins Laboratory, Inc.



The results in this report apply to the samples analyzed in accordance with the chain of custody document. This analytical report must be reproduced in its entirety.

Eagle Environmental Consulting, Inc.
8000 W 44th Ave
Wheat Ridge CO 80033

Martin C Eckert III
Project Number: [none]
Project: Noble - HSR-LDS A #10-8

Volatile Organic Compounds by GC/MS SW846 8260D - Quality Control
Origins Laboratory, Inc.

Analyte	Result	Reporting Limit	Units	Spike Level	Source Result	%REC	%REC Limits	RPD	RPD Limit	Notes
---------	--------	-----------------	-------	-------------	---------------	------	-------------	-----	-----------	-------

Batch B1K2402 - EPA 5030 (soil)

LCS (B1K2402-BS1)

Prepared: 11/24/2021 Analyzed: 11/29/2021

1,2,4-Trimethylbenzene	0.0957	0.00200	mg/kg	0.100		95.7	70-130			
Naphthalene	0.103	0.0100	"	0.100		103	70-130			
1,3,5-Trimethylbenzene	0.0959	0.00200	"	0.100		95.9	70-130			
Benzene	0.102	0.00200	"	0.100		102	70-130			
Ethylbenzene	0.0941	0.00200	"	0.100		94.1	70-130			
m,p-Xylene	0.191	0.00400	"	0.200		95.4	70-130			
o-Xylene	0.0947	0.00200	"	0.100		94.7	70-130			
Toluene	0.0954	0.00200	"	0.100		95.4	70-130			
Surrogate: 1,2-Dichloroethane-d4	0.12		"	0.125		98.8	70-130			
Surrogate: Toluene-d8	0.12		"	0.125		95.5	70-130			
Surrogate: 4-Bromofluorobenzene	0.12		"	0.125		99.3	70-130			

Origins Laboratory, Inc.



The results in this report apply to the samples analyzed in accordance with the chain of custody document. This analytical report must be reproduced in its entirety.

Eagle Environmental Consulting, Inc.
8000 W 44th Ave
Wheat Ridge CO 80033

Martin C Eckert III
Project Number: [none]
Project: Noble - HSR-LDS A #10-8

Volatile Organic Compounds by GC/MS SW846 8260D - Quality Control
Origins Laboratory, Inc.

Analyte	Result	Reporting Limit	Units	Spike Level	Source Result	%REC	%REC Limits	RPD	RPD Limit	Notes
---------	--------	-----------------	-------	-------------	---------------	------	-------------	-----	-----------	-------

Batch B1K2402 - EPA 5030 (soil)

Matrix Spike (B1K2402-MS1)		Source: Y111440-01			Prepared: 11/24/2021 Analyzed: 11/29/2021					
1,2,4-Trimethylbenzene	0.0757	0.00200	mg/kg	0.100	ND	75.7	70-130			
Naphthalene	0.0729	0.0100	"	0.100	ND	72.9	70-130			
1,3,5-Trimethylbenzene	0.0758	0.00200	"	0.100	ND	75.8	70-130			
Benzene	0.0953	0.00200	"	0.100	ND	95.3	70-130			
Ethylbenzene	0.0796	0.00200	"	0.100	ND	79.6	70-130			
m,p-Xylene	0.160	0.00400	"	0.200	ND	80.2	70-130			
o-Xylene	0.0811	0.00200	"	0.100	ND	81.1	70-130			
Toluene	0.0848	0.00200	"	0.100	ND	84.8	70-130			
Surrogate: 1,2-Dichloroethane-d4	0.12		"	0.125		99.0	70-130			
Surrogate: Toluene-d8	0.12		"	0.125		93.7	70-130			
Surrogate: 4-Bromofluorobenzene	0.12		"	0.125		97.5	70-130			

Origins Laboratory, Inc.



The results in this report apply to the samples analyzed in accordance with the chain of custody document. This analytical report must be reproduced in its entirety.

Eagle Environmental Consulting, Inc.
8000 W 44th Ave
Wheat Ridge CO 80033

Martin C Eckert III
Project Number: [none]
Project: Noble - HSR-LDS A #10-8

Volatile Organic Compounds by GC/MS SW846 8260D - Quality Control
Origins Laboratory, Inc.

Analyte	Result	Reporting Limit	Units	Spike Level	Source Result	%REC	%REC Limits	RPD	RPD Limit	Notes
Batch B1K2402 - EPA 5030 (soil)										
Matrix Spike Dup (B1K2402-MSD1)			Source: Y111440-01		Prepared: 11/24/2021 Analyzed: 11/29/2021					
1,2,4-Trimethylbenzene	0.0670	0.00200	mg/kg	0.100	ND	67.0	70-130	12.2	20	QM-07
Naphthalene	0.0666	0.0100	"	0.100	ND	66.6	70-130	9.01	20	QM-07
1,3,5-Trimethylbenzene	0.0666	0.00200	"	0.100	ND	66.6	70-130	13.0	20	QM-07
Benzene	0.0884	0.00200	"	0.100	ND	88.4	70-130	7.52	20	
Ethylbenzene	0.0722	0.00200	"	0.100	ND	72.2	70-130	9.75	20	
m,p-Xylene	0.143	0.00400	"	0.200	ND	71.3	70-130	11.8	20	
o-Xylene	0.0728	0.00200	"	0.100	ND	72.8	70-130	10.9	20	
Toluene	0.0772	0.00200	"	0.100	ND	77.2	70-130	9.38	20	
Surrogate: 1,2-Dichloroethane-d4	0.12		"	0.125		99.9	70-130			
Surrogate: Toluene-d8	0.12		"	0.125		92.9	70-130			
Surrogate: 4-Bromofluorobenzene	0.12		"	0.125		99.1	70-130			

Origins Laboratory, Inc.



The results in this report apply to the samples analyzed in accordance with the chain of custody document. This analytical report must be reproduced in its entirety.

Eagle Environmental Consulting, Inc.
8000 W 44th Ave
Wheat Ridge CO 80033

Martin C Eckert III
Project Number: [none]
Project: Noble - HSR-LDS A #10-8

Volatile Organic Compounds by GC/MS SW846 8260D - Quality Control
Origins Laboratory, Inc.

Analyte	Result	Reporting Limit	Units	Spike Level	Source Result	%REC	%REC Limits	RPD	RPD Limit	Notes
Batch B1K3022 - EPA 3550B										
Blank (B1K3022-BLK1)					Prepared: 11/30/2021 Analyzed: 12/02/2021					
Diesel (C10-C28)	ND	50.0	mg/kg							U
Residual Range Organics (C28-C40)	ND	200	"							U
Surrogate: o-Terphenyl	46		"	49.8		91.9	50-150			

Origins Laboratory, Inc.



The results in this report apply to the samples analyzed in accordance with the chain of custody document. This analytical report must be reproduced in its entirety.

Eagle Environmental Consulting, Inc.
8000 W 44th Ave
Wheat Ridge CO 80033

Martin C Eckert III
Project Number: [none]
Project: Noble - HSR-LDS A #10-8

Extractable Petroleum Hydrocarbons by 8015D - Quality Control
Origins Laboratory, Inc.

Analyte	Result	Reporting Limit	Units	Spike Level	Source Result	%REC	%REC Limits	RPD	RPD Limit	Notes
---------	--------	-----------------	-------	-------------	---------------	------	-------------	-----	-----------	-------

Batch B1K3022 - EPA 3550B

LCS (B1K3022-BS1)

Prepared: 11/30/2021 Analyzed: 12/02/2021

Diesel (C10-C28)	602	25.0	mg/kg	500		120	70-130			
Residual Range Organics (C28-C40)	432	100	"	500		86.4	70-130			
Surrogate: o-Terphenyl	27		"	24.9		108	50-150			

Origins Laboratory, Inc.



The results in this report apply to the samples analyzed in accordance with the chain of custody document. This analytical report must be reproduced in its entirety.

Eagle Environmental Consulting, Inc.
8000 W 44th Ave
Wheat Ridge CO 80033

Martin C Eckert III
Project Number: [none]
Project: Noble - HSR-LDS A #10-8

Extractable Petroleum Hydrocarbons by 8015D - Quality Control

Origins Laboratory, Inc.

Analyte	Result	Reporting Limit	Units	Spike Level	Source Result	%REC	%REC Limits	RPD	RPD Limit	Notes
---------	--------	-----------------	-------	-------------	---------------	------	-------------	-----	-----------	-------

Batch B1K3022 - EPA 3550B

Matrix Spike (B1K3022-MS1)		Source: Y111439-01			Prepared: 11/30/2021 Analyzed: 12/02/2021					
Diesel (C10-C28)	500	25.0	mg/kg	500	ND	100	70-130			
Residual Range Organics (C28-C40)	358	100	"	500	31.1	65.4	70-130			QM-07
Surrogate: o-Terphenyl	25		"	24.9		100	50-150			

Origins Laboratory, Inc.



The results in this report apply to the samples analyzed in accordance with the chain of custody document. This analytical report must be reproduced in its entirety.

Eagle Environmental Consulting, Inc.
8000 W 44th Ave
Wheat Ridge CO 80033

Martin C Eckert III
Project Number: [none]
Project: Noble - HSR-LDS A #10-8

Extractable Petroleum Hydrocarbons by 8015D - Quality Control
Origins Laboratory, Inc.

Analyte	Result	Reporting Limit	Units	Spike Level	Source Result	%REC	%REC Limits	RPD	RPD Limit	Notes
---------	--------	-----------------	-------	-------------	---------------	------	-------------	-----	-----------	-------

Batch B1K3022 - EPA 3550B

Matrix Spike Dup (B1K3022-MSD1)		Source: Y111439-01			Prepared: 11/30/2021 Analyzed: 12/02/2021					
Diesel (C10-C28)	550	25.0	mg/kg	500	ND	110	70-130	9.42	35	
Residual Range Organics (C28-C40)	401	100	"	500	31.1	73.9	70-130	11.2	35	
Surrogate: o-Terphenyl	23		"	24.9		93.1	50-150			

Origins Laboratory, Inc.



The results in this report apply to the samples analyzed in accordance with the chain of custody document. This analytical report must be reproduced in its entirety.

Eagle Environmental Consulting, Inc.
8000 W 44th Ave
Wheat Ridge CO 80033

Martin C Eckert III
Project Number: [none]
Project: Noble - HSR-LDS A #10-8

Extractable Petroleum Hydrocarbons by 8015D - Quality Control

Origins Laboratory, Inc.

Analyte	Result	Reporting Limit	Units	Spike Level	Source Result	%REC	%REC Limits	RPD	RPD Limit	Notes
---------	--------	-----------------	-------	-------------	---------------	------	-------------	-----	-----------	-------

Saturated Paste - Quality Control

Origins Laboratory, Inc.

Analyte	Result	Reporting Limit	Units	Spike Level	Source Result	%REC	%REC Limits	RPD	RPD Limit	Notes
---------	--------	-----------------	-------	-------------	---------------	------	-------------	-----	-----------	-------

Batch B1K2216 - NO PREP

Duplicate (B1K2216-DUP1)

Source: Y111440-01

Prepared: 11/22/2021 Analyzed: 11/23/2021

pH	7.55	pH Units	7.64	1.18	25
----	------	----------	------	------	----

Batch B1K2217 - NO PREP

Blank (B1K2217-BLK1)

Prepared: 11/22/2021 Analyzed: 11/23/2021

Specific Conductance (EC)	0.00110	0.00500	mmhos/cm
---------------------------	---------	---------	----------

Duplicate (B1K2217-DUP1)

Source: Y111430-05

Prepared: 11/22/2021 Analyzed: 11/23/2021

Specific Conductance (EC)	6.16	0.00500	mmhos/cm	6.42	4.07	25
---------------------------	------	---------	----------	------	------	----

Origins Laboratory, Inc.



The results in this report apply to the samples analyzed in accordance with the chain of custody document. This analytical report must be reproduced in its entirety.

Eagle Environmental Consulting, Inc.
8000 W 44th Ave
Wheat Ridge CO 80033

Martin C Eckert III
Project Number: [none]
Project: Noble - HSR-LDS A #10-8

PAH by 8270D SIM - Quality Control
Waypoint Analytical, Inc.

Analyte	Result	Reporting Limit	Units	Spike Level	Source Result	%REC	%REC Limits	RPD	RPD Limit	Notes
---------	--------	-----------------	-------	-------------	---------------	------	-------------	-----	-----------	-------

Batch L587000 - 3550B

MSD (L 87227-MSD-L587000)		Source: 87227			Prepared: 11/29/2021 Analyzed: 11/29/2021					
Dibenz(a,h)anthracene	0.143	0.00036	mg/Kg	0.163	0.000515	87.7	30-130	28.2	30	
1-Methylnaphthalene	0.101	0.00033	"	0.163	<0.000330	61.9	30-130	4.6	30	
Naphthalene	0.0961	0.000467	"	0.163	<0.000467	58.9	30-130	4.4	30	
Indeno(1,2,3-cd)pyrene	0.121	0.00029	"	0.163	0.000749	73.7	30-130	30.1	30	
Fluoranthene	0.116	0.00039	"	0.163	0.00414	68.6	30-130	4.4	30	
Chrysene	0.112	0.00027	"	0.163	0.00165	67.6	30-130	7.4	30	
Benzo(k)fluoranthene	0.116	0.00013	"	0.163	0.000784	70.6	30-130	2.6	30	
Benzo(b)fluoranthene	0.111	0.00021	"	0.163	0.00134	67.2	30-130	14.2	30	
Pyrene	0.114	0.00059	"	0.163	0.00344	67.8	30-130	4.4	30	
Benzo(a)anthracene	0.105	0.00041	"	0.163	0.00155	63.4	30-130	0.9	30	
Anthracene	0.111	0.00033	"	0.163	<0.000330	68	30-130	3.6	30	
Acenaphthene	0.105	0.0003	"	0.163	<0.000300	64.4	30-130	2.8	30	
2-Methylnaphthalene	0.0996	0.00039	"	0.163	<0.000390	61.1	30-130	4	30	
Benzo(a)pyrene	0.109	0.00014	"	0.163	0.00143	65.9	30-130	2.7	30	
Fluorene	0.108	0.00029	"	0.163	<0.000290	66.2	30-130	1.8	30	
Surrogate: Nitrobenzene-d5	41.1		"	0.326	128	41.1	29-110			
Surrogate: 4-Terphenyl-d14	61.6		"	0.326	205	61.6	33-122			
Surrogate: 2-Fluorobiphenyl	52.1		"	0.326	174	52.1	33-115			

MS (L 87227-MS-L587000)		Source: 87227			Prepared: 11/29/2021 Analyzed: 11/29/2021					
Pyrene	0.109	0.00059	mg/Kg	0.163	0.00344	64.7	30-130			
Benzo(k)fluoranthene	0.113	0.00013	"	0.163	0.000784	68.8	30-130			
Chrysene	0.104	0.00027	"	0.163	0.00165	62.7	30-130			
Dibenz(a,h)anthracene	0.19	0.00036	"	0.163	0.000515	117	30-130			
Fluoranthene	0.111	0.00039	"	0.163	0.00414	65.5	30-130			
Fluorene	0.106	0.00029	"	0.163	<0.000290	65	30-130			
Naphthalene	0.0919	0.000467	"	0.163	<0.000467	56.3	30-130			

Origins Laboratory, Inc.

The results in this report apply to the samples analyzed in accordance with the chain of custody document. This analytical report must be reproduced in its entirety.

Eagle Environmental Consulting, Inc.
8000 W 44th Ave
Wheat Ridge CO 80033

Martin C Eckert III
Project Number: [none]
Project: Noble - HSR-LDS A #10-8

PAH by 8270D SIM - Quality Control
Waypoint Analytical, Inc.

Analyte	Result	Reporting Limit	Units	Spike Level	Source Result	%REC	%REC Limits	RPD	RPD Limit	Notes
---------	--------	-----------------	-------	-------------	---------------	------	-------------	-----	-----------	-------

Batch L587000 - 3550B

MS (L 87227-MS-L587000)		Source: 87227			Prepared: 11/29/2021 Analyzed: 11/29/2021					
1-Methylnaphthalene	0.0964	0.00033	mg/Kg	0.163	<0.000330	59.1	30-130			
Indeno(1,2,3-cd)pyrene	0.164	0.00029	"	0.163	0.000749	100	30-130			
Benzo(b)fluoranthene	0.128	0.00021	"	0.163	0.00134	77.7	30-130			
Benzo(a)pyrene	0.112	0.00014	"	0.163	0.00143	67.8	30-130			
Benzo(a)anthracene	0.106	0.00041	"	0.163	0.00155	64	30-130			
Anthracene	0.107	0.00033	"	0.163	<0.000330	65.6	30-130			
Acenaphthene	0.102	0.0003	"	0.163	<0.000300	62.5	30-130			
2-Methylnaphthalene	0.0956	0.00039	"	0.163	<0.000390	58.6	30-130			
Surrogate: 4-Terphenyl-d14	61.4		"	0.327	205	61.4	33-122			
Surrogate: Nitrobenzene-d5	41.2		"	0.327	128	41.2	29-110			
Surrogate: 2-Fluorobiphenyl	51		"	0.327	174	51	33-115			

LCS (LCS-L587000)		Prepared: 11/29/2021 Analyzed: 11/29/2021								
Benzo(b)fluoranthene	0.118	0.00021	mg/Kg	0.167		70.6	30-130			
Chrysene	0.114	0.00027	"	0.167		68.2	30-130			
Pyrene	0.112	0.00059	"	0.167		67	30-130			
Naphthalene	0.0965	0.000467	"	0.167		57.7	30-130			
Indeno(1,2,3-cd)pyrene	0.124	0.00029	"	0.167		74.2	30-130			
Fluorene	0.108	0.00029	"	0.167		64.6	30-130			
Benzo(a)anthracene	0.105	0.00041	"	0.167		62.8	30-130			
Dibenz(a,h)anthracene	0.147	0.00036	"	0.167		88	30-130			
1-Methylnaphthalene	0.0991	0.00033	"	0.167		59.3	30-130			
Benzo(k)fluoranthene	0.119	0.00013	"	0.167		71.2	30-130			
Benzo(a)pyrene	0.111	0.00014	"	0.167		66.4	30-130			
Anthracene	0.112	0.00033	"	0.167		67	30-130			
Acenaphthene	0.105	0.0003	"	0.167		62.8	30-130			
2-Methylnaphthalene	0.0983	0.00039	"	0.167		58.8	30-130			

Origins Laboratory, Inc.

The results in this report apply to the samples analyzed in accordance with the chain of custody document. This analytical report must be reproduced in its entirety.

Eagle Environmental Consulting, Inc.
8000 W 44th Ave
Wheat Ridge CO 80033

Martin C Eckert III
Project Number: [none]
Project: Noble - HSR-LDS A #10-8

PAH by 8270D SIM - Quality Control
Waypoint Analytical, Inc.

Analyte	Result	Reporting Limit	Units	Spike Level	Source Result	%REC	%REC Limits	RPD	RPD Limit	Notes
---------	--------	-----------------	-------	-------------	---------------	------	-------------	-----	-----------	-------

Batch L587000 - 3550B

LCS (LCS-L587000)

Prepared: 11/29/2021 Analyzed: 11/29/2021

Fluoranthene	0.112	0.00039	mg/Kg	0.167		67	30-130			
Surrogate: Nitrobenzene-d5	41.1		"	0.333		41.1	29-110			
Surrogate: 4-Terphenyl-d14	60.3		"	0.333		60.3	33-122			
Surrogate: 2-Fluorobiphenyl	50.7		"	0.333		50.7	33-115			

LRB (LRB-L587000)

Prepared: 11/29/2021 Analyzed: 11/29/2021

Dibenz(a,h)anthracene	ND	0.00067	mg/Kg				-			
Benzo(a)pyrene	0.000244	0.00067	"				-			J
Pyrene	ND	0.00067	"				-			
Naphthalene	ND	0.00067	"				-			
Indeno(1,2,3-cd)pyrene	ND	0.00067	"				-			
Fluorene	ND	0.00067	"				-			
Fluoranthene	ND	0.00067	"				-			
Benzo(k)fluoranthene	ND	0.00067	"				-			
Benzo(b)fluoranthene	ND	0.00067	"				-			
1-Methylnaphthalene	ND	0.00067	"				-			
Benzo(a)anthracene	ND	0.00067	"				-			
Anthracene	ND	0.00067	"				-			
Acenaphthene	ND	0.00067	"				-			
2-Methylnaphthalene	ND	0.00067	"				-			
Chrysene	ND	0.00067	"				-			
Surrogate: Nitrobenzene-d5	36.9		"	0.333		36.9	29-110			
Surrogate: 4-Terphenyl-d14	62.1		"	0.333		62.1	33-122			
Surrogate: 2-Fluorobiphenyl	54		"	0.333		54	33-115			

Origins Laboratory, Inc.

The results in this report apply to the samples analyzed in accordance with the chain of custody document. This analytical report must be reproduced in its entirety.

Eagle Environmental Consulting, Inc.
8000 W 44th Ave
Wheat Ridge CO 80033

Martin C Eckert III
Project Number: [none]
Project: Noble - HSR-LDS A #10-8

Notes and Definitions

U Sample is Non-Detect.

QM-07 The spike recovery was outside acceptance limits for the MS and/or MSD. The batch was accepted based on acceptable LCS recovery.

JB [Undefined]

J Estimated Value. Analyte below reported quantitation limit.

ND Analyte NOT DETECTED at or above the reporting limit

RPD Relative Percent Difference

All soil results are reported on a wet weight basis.

Origins Laboratory, Inc.



The results in this report apply to the samples analyzed in accordance with the chain of custody document. This analytical report must be reproduced in its entirety.



January 20, 2022

Eagle Environmental Consulting, Inc.

Martin C Eckert III

8000 W 44th Ave

Wheat Ridge CO 80033

Project Name - Noble - HSR - LDS A #10-8, 15-8 Tank Battery **Project Number - -**

Attached are your analytical results for Noble - HSR - LDS A #10-8, 15-8 Tank Battery received by Origins Laboratory, Inc. January 11, 2022. This project is associated with Origins project number Y201169-01.

The analytical results in the following report were analyzed under the guidelines of EPA Methods. These methods are identified as follows; "SW" are defined in SW-846, "EPA" are defined in 40CFR part 136 and "SM" are defined in the most current revision of Standard Methods For the Examination of Water and Wastewater.

The analytical results apply specifically to the samples and analyses specified per the attached Chain of Custody. As such, this report shall not be reproduced except in full, without the written approval of Origin's laboratory.

Unless otherwise noted, the analytical results for all soil samples are reported on a wet weight basis. All analytical analyses were performed under NELAP guidelines unless noted by a data qualifier.

Any holding time exceedances, deviations from the method specifications or deviations from Origins Laboratory's Standard Operating Procedures are outlined in the case narrative.

Thank you for selecting Origins for your analytical needs. Please contact us with any questions concerning this report, or if we can help with anything at all.

Origins Laboratory, Inc.
303.433.1322
o-squad@oelabinc.com



1725 Elk Place, Denver, CO 80211 | Phone: 303.433.1322 | Fax: 303.265.9645

Eagle Environmental Consulting, Inc.

8000 W 44th Ave

Wheat Ridge CO 80033

Martin C Eckert III

Project Number: -

Project: Noble - HSR - LDS A #10-8, 15-8 Tank
Battery

CROSS REFERENCE REPORT

Sample ID	Laboratory ID	Matrix	Date Sampled	Date Received
TB-SS-01@0.5'	Y201169-01	Soil	January 11, 2022 11:20	01/11/2022 14:35
TB-SS-02@5'	Y201169-02	Soil	January 11, 2022 11:38	01/11/2022 14:35
WV-FS-01@5.5'	Y201169-03	Soil	January 11, 2022 13:24	01/11/2022 14:35
WV-SS-04@4.5'	Y201169-04	Soil	January 11, 2022 13:23	01/11/2022 14:35

Origins Laboratory, Inc.



*The results in this report apply to the samples analyzed in
accordance with the chain of custody document. This
analytical report must be reproduced in its entirety.*

Eagle Environmental Consulting, Inc.

8000 W 44th Ave

Wheat Ridge CO 80033

Martin C Eckert III

Project Number: -

Project: Noble - HSR - LDS A #10-8, 15-8 Tank Battery

Origins Laboratory

Sample Receipt Checklist

F-012207-01-R1
Effective Date: 01/09/12

Origins Work Order: 7201169

Client: Eagle

Client Project ID: HSR LDS A 10-8, 15-8

Checklist Completed by: JG

Shipped Via: HD

(UPS, FedEx, Hand Delivered, Pick-up, etc.)

Date/time completed: 1/12/22

Airbill #: N/A

Matrix(s) Received: (Check all that apply): X Soil/Solid Water Other:

Cooler Number/Temperature: 1, 3.9 °C °C °C °C (Describe)

Thermometer ID: T003

Requirement Description	Yes	No	N/A	Comments (if any)
If samples require cooling, was the temperature between 0°C to ≤ 6°C ⁽¹⁾ ?	<input checked="" type="checkbox"/>	<input type="checkbox"/>	<input type="checkbox"/>	
Is there ice present (document if blue ice is used)	<input checked="" type="checkbox"/>	<input type="checkbox"/>	<input type="checkbox"/>	
Are custody seals present on cooler? (if so, document in comments if they are signed and dated, broken or intact)	<input type="checkbox"/>	<input checked="" type="checkbox"/>	<input type="checkbox"/>	
Are custody seals present on each sample container? (if so, document in comments if they are signed and dated, broken or intact)	<input type="checkbox"/>	<input checked="" type="checkbox"/>	<input type="checkbox"/>	
Were all samples received intact ⁽¹⁾ ?	<input checked="" type="checkbox"/>	<input type="checkbox"/>	<input type="checkbox"/>	
Was adequate sample volume provided ⁽¹⁾ ?	<input checked="" type="checkbox"/>	<input type="checkbox"/>	<input type="checkbox"/>	
Are short holding time analytes or samples with HTs due within 48 hours present ⁽¹⁾ ?	<input type="checkbox"/>	<input type="checkbox"/>	<input type="checkbox"/>	
Is a chain-of-custody (COC) present and filled out completely ⁽¹⁾ ?	<input checked="" type="checkbox"/>	<input type="checkbox"/>	<input type="checkbox"/>	
Does the COC agree with the number and type of sample bottles received ⁽¹⁾ ?	<input checked="" type="checkbox"/>	<input type="checkbox"/>	<input type="checkbox"/>	
Do the sample IDs on the bottle labels match the COC ⁽¹⁾ ?	<input checked="" type="checkbox"/>	<input type="checkbox"/>	<input type="checkbox"/>	
Is the COC properly relinquished by the client with date and time recorded ⁽¹⁾ ?	<input checked="" type="checkbox"/>	<input type="checkbox"/>	<input type="checkbox"/>	
For volatiles in water – is there headspace (> 1/4 inch bubble) present? If yes, contact client and note in narrative.	<input type="checkbox"/>	<input type="checkbox"/>	<input checked="" type="checkbox"/>	
Are samples preserved that require preservation and was it checked ⁽¹⁾ ? (note ID of confirmation instrument used in comments) / (preservation is not confirmed for subcontracted analyses in order to insure sample integrity) / (pH < 2 for samples preserved with HNO ₃ , HCL, H ₂ SO ₄) / (pH > 10 for samples preserved with NaAsO ₂ +NaOH, ZnAc+NaOH)	<input type="checkbox"/>	<input type="checkbox"/>	<input checked="" type="checkbox"/>	
Additional Comments (if any):				

⁽¹⁾ If NO, then contact the client before proceeding with analysis and note date/time and person contacted as well as the corrective action to in the additional comments (above) and the case narrative.

Reviewed by (Project Manager) JG

1/13/22
Date/Time Reviewed

Origins Laboratory, Inc.

The results in this report apply to the samples analyzed in accordance with the chain of custody document. This analytical report must be reproduced in its entirety.

Eagle Environmental Consulting, Inc.
8000 W 44th Ave
Wheat Ridge CO 80033

Martin C Eckert III
Project Number: -
Project: Noble - HSR - LDS A #10-8, 15-8 Tank Battery

TB-SS-01@0.5'

1/11/2022 11:20:00AM

Analyte	Result	Min Detection Limit	Reporting Limit	Units	Dilution	Batch	Prepared	Analyzed	Notes
---------	--------	---------------------	-----------------	-------	----------	-------	----------	----------	-------

Origins Laboratory, Inc.
Y201169-01 (Soil)

Boron (DTPA Sorbitol)

Boron	ND	0.200	mg/L	1	B2A1208	01/12/2022	01/13/2022	
-------	----	-------	------	---	---------	------------	------------	--

DRO/ORO by EPA 8015D

Diesel (C10-C28)	ND	25.0	mg/kg	1	B2A1216	01/12/2022	01/13/2022	U
Residual Range Organics (C28-C40)	ND	100	"	"	"	"	"	U

Surrogate: o-Terphenyl	79.7 %	50-150		"	"	"
------------------------	--------	--------	--	---	---	---

GBTEX+TMBs by 8260D

1,2,4-Trimethylbenzene	ND	0.00200	mg/kg	1	B2A1701	01/17/2022	01/17/2022	U
1,3,5-Trimethylbenzene	ND	0.00200	"	"	"	"	"	U
Benzene	ND	0.00200	"	"	"	"	"	U
Ethylbenzene	ND	0.00200	"	"	"	"	"	U
Toluene	ND	0.00200	"	"	"	"	"	U
Xylenes, total	ND	0.00200	"	"	"	"	"	U
Gasoline Range Hydrocarbons	ND	0.200	"	"	"	"	"	U

Surrogate: 1,2-Dichloroethane-d4	106 %	70-130		"	"	"
----------------------------------	-------	--------	--	---	---	---

Origins Laboratory, Inc.



The results in this report apply to the samples analyzed in accordance with the chain of custody document. This analytical report must be reproduced in its entirety.

Eagle Environmental Consulting, Inc.
8000 W 44th Ave
Wheat Ridge CO 80033

Martin C Eckert III
Project Number: -
Project: Noble - HSR - LDS A #10-8, 15-8 Tank
Battery

TB-SS-01@0.5'

1/11/2022 11:20:00AM

Analyte	Result	Min Detection Limit	Reporting Limit	Units	Dilution	Batch	Prepared	Analyzed	Notes
---------	--------	------------------------	--------------------	-------	----------	-------	----------	----------	-------

Origins Laboratory, Inc.
Y201169-01 (Soil)

GBTEX+TMBs by 8260D

Surrogate: Toluene-d8	83.1 %	70-130	B2A17 01	01/17/2022	01/17/2022
Surrogate: 4-Bromofluorobenzene	99.4 %	70-130	"	"	"

Metals by Saturated Paste by EPA 6010

Calcium	0.978	0.499	meq/L	10	[CALC]	01/12/2022	01/13/2022
Magnesium	ND	0.823	"	"	"	"	"
Sodium	ND	0.435	"	"	"	"	"

PAH by 8270D SIM

1-Methylnaphthalene	ND	0.000364	0.00067	mg/Kg	1	L594658	01/14/2022	01/17/2022
2-Methylnaphthalene	ND	0.000645	0.00067	"	"	"	"	"
Acenaphthene	ND	0.000304	0.00067	"	"	"	"	"
Anthracene	ND	0.000334	0.00067	"	"	"	"	"
Benzo(a)anthracene	ND	0.000493	0.00067	"	"	"	"	"
Benzo(a)pyrene	ND	0.000468	0.00067	"	"	"	"	"
Benzo(b)fluoranthene	ND	0.000585	0.00067	"	"	"	"	"
Benzo(k)fluoranthene	ND	0.000437	0.00067	"	"	"	"	"
Chrysene	ND	0.000624	0.00067	"	"	"	"	"
Dibenz(a,h)anthracene	ND	0.000614	0.00067	"	"	"	"	"
Fluoranthene	ND	0.000394	0.00067	"	"	"	"	"

Origins Laboratory, Inc.

The results in this report apply to the samples analyzed in accordance with the chain of custody document. This analytical report must be reproduced in its entirety.

Eagle Environmental Consulting, Inc.
8000 W 44th Ave
Wheat Ridge CO 80033

Martin C Eckert III
Project Number: -
Project: Noble - HSR - LDS A #10-8, 15-8 Tank Battery

TB-SS-01@0.5'
1/11/2022 11:20:00AM

Analyte	Result	Min Detection Limit	Reporting Limit	Units	Dilution	Batch	Prepared	Analyzed	Notes
---------	--------	---------------------	-----------------	-------	----------	-------	----------	----------	-------

Waypoint Analytical, Inc.
Y201169-01 (Soil)

PAH by 8270D SIM

Fluorene	ND	0.000286	0.00067	mg/Kg	1	L594658	01/14/2022	01/17/2022
Indeno(1,2,3-cd)pyrene	ND	0.000627	0.00067	"	"	"	"	"
Naphthalene	ND	0.000484	0.00067	"	"	"	"	"
Pyrene	ND	0.000643	0.00067	"	"	"	"	"

Surrogate: 2-Fluorobiphenyl	59.3 %	33-115	"	"	"
Surrogate: 4-Terphenyl-d14	69.9 %	33-122	"	"	"
Surrogate: Nitrobenzene-d5	62.6 %	29-110	"	"	"

pH in Soil by 9045D

pH	8.24	pH Units	1	B2A1222	01/12/2022	01/13/2022
----	------	----------	---	---------	------------	------------

SAR by 20B Saturated Paste

SAR	0.129	SAR	1	B2A1212	01/12/2022	01/13/2022
-----	-------	-----	---	---------	------------	------------

Specific Conductance Mod. 9050A

Specific Conductance (EC)	0.172	0.00500 mmhos/cm	1	B2A1218	01/12/2022	01/13/2022
---------------------------	-------	------------------	---	---------	------------	------------

Origins Laboratory, Inc.

The results in this report apply to the samples analyzed in accordance with the chain of custody document. This analytical report must be reproduced in its entirety.

Eagle Environmental Consulting, Inc.
8000 W 44th Ave
Wheat Ridge CO 80033

Martin C Eckert III
Project Number: -
Project: Noble - HSR - LDS A #10-8, 15-8 Tank Battery

TB-SS-02@5'

1/11/2022 11:38:00AM

Analyte	Result	Min Detection Limit	Reporting Limit	Units	Dilution	Batch	Prepared	Analyzed	Notes
---------	--------	---------------------	-----------------	-------	----------	-------	----------	----------	-------

Origins Laboratory, Inc.
Y201169-02 (Soil)

Boron (DTPA Sorbitol)

Boron	0.317	0.198	mg/L	1	B2A1208	01/12/2022	01/13/2022	
-------	-------	-------	------	---	---------	------------	------------	--

DRO/ORO by EPA 8015D

Diesel (C10-C28)	ND	25.0	mg/kg	1	B2A1216	01/12/2022	01/13/2022	U
Residual Range Organics (C28-C40)	ND	100	"	"	"	"	"	U

Surrogate: o-Terphenyl	76.9 %	50-150	"	"	"
------------------------	--------	--------	---	---	---

GBTEX+TMBs by 8260D

1,2,4-Trimethylbenzene	ND	0.00200	mg/kg	1	B2A1701	01/17/2022	01/17/2022	U
1,3,5-Trimethylbenzene	ND	0.00200	"	"	"	"	"	U
Benzene	ND	0.00200	"	"	"	"	"	U
Ethylbenzene	ND	0.00200	"	"	"	"	"	U
Toluene	ND	0.00200	"	"	"	"	"	U
Xylenes, total	ND	0.00200	"	"	"	"	"	U
Gasoline Range Hydrocarbons	ND	0.200	"	"	"	"	"	U

Surrogate: 1,2-Dichloroethane-d4	106 %	70-130	"	"	"
----------------------------------	-------	--------	---	---	---

Origins Laboratory, Inc.



The results in this report apply to the samples analyzed in accordance with the chain of custody document. This analytical report must be reproduced in its entirety.

Eagle Environmental Consulting, Inc.
8000 W 44th Ave
Wheat Ridge CO 80033

Martin C Eckert III
Project Number: -
Project: Noble - HSR - LDS A #10-8, 15-8 Tank Battery

TB-SS-02@5'

1/11/2022 11:38:00AM

Analyte	Result	Min Detection Limit	Reporting Limit	Units	Dilution	Batch	Prepared	Analyzed	Notes
---------	--------	---------------------	-----------------	-------	----------	-------	----------	----------	-------

Origins Laboratory, Inc.
Y201169-02 (Soil)

GBTEX+TMBs by 8260D

Surrogate: Toluene-d8	82.9 %	70-130	B2A17 01	01/17/2022	01/17/2022
Surrogate: 4-Bromofluorobenzene	98.7 %	70-130	"	"	"

Metals by Saturated Paste by EPA 6010

Calcium	2.02	0.499	meq/L	10	[CALC]	01/12/2022	01/13/2022
Magnesium	0.889	0.823	"	"	"	"	"
Sodium	0.900	0.435	"	"	"	"	"

PAH by 8270D SIM

1-Methylnaphthalene	ND	0.000364	0.00067	mg/Kg	1	L594658	01/14/2022	01/17/2022
2-Methylnaphthalene	ND	0.000645	0.00067	"	"	"	"	"
Acenaphthene	ND	0.000304	0.00067	"	"	"	"	"
Anthracene	ND	0.000334	0.00067	"	"	"	"	"
Benzo(a)anthracene	ND	0.000493	0.00067	"	"	"	"	"
Benzo(a)pyrene	ND	0.000468	0.00067	"	"	"	"	"
Benzo(b)fluoranthene	ND	0.000585	0.00067	"	"	"	"	"
Benzo(k)fluoranthene	ND	0.000437	0.00067	"	"	"	"	"
Chrysene	ND	0.000624	0.00067	"	"	"	"	"
Dibenz(a,h)anthracene	ND	0.000614	0.00067	"	"	"	"	"
Fluoranthene	ND	0.000394	0.00067	"	"	"	"	"

Origins Laboratory, Inc.

The results in this report apply to the samples analyzed in accordance with the chain of custody document. This analytical report must be reproduced in its entirety.

Eagle Environmental Consulting, Inc.
8000 W 44th Ave
Wheat Ridge CO 80033

Martin C Eckert III
Project Number: -
Project: Noble - HSR - LDS A #10-8, 15-8 Tank Battery

TB-SS-02@5'

1/11/2022 11:38:00AM

Analyte	Result	Min Detection Limit	Reporting Limit	Units	Dilution	Batch	Prepared	Analyzed	Notes
---------	--------	---------------------	-----------------	-------	----------	-------	----------	----------	-------

Waypoint Analytical, Inc.
Y201169-02 (Soil)

PAH by 8270D SIM

Fluorene	ND	0.000286	0.00067	mg/Kg	1	L594658	01/14/2022	01/17/2022
Indeno(1,2,3-cd)pyrene	ND	0.000627	0.00067	"	"	"	"	"
Naphthalene	ND	0.000484	0.00067	"	"	"	"	"
Pyrene	ND	0.000643	0.00067	"	"	"	"	"

Surrogate: 2-Fluorobiphenyl	57.8 %	33-115	"	"	"
Surrogate: 4-Terphenyl-d14	68.4 %	33-122	"	"	"
Surrogate: Nitrobenzene-d5	60.8 %	29-110	"	"	"

pH in Soil by 9045D

pH	8.06	pH Units	1	B2A1222	01/12/2022	01/13/2022
----	------	----------	---	---------	------------	------------

SAR by 20B Saturated Paste

SAR	0.746	SAR	1	B2A1212	01/12/2022	01/13/2022
-----	-------	-----	---	---------	------------	------------

Specific Conductance Mod. 9050A

Specific Conductance (EC)	0.403	0.00500 mmhos/cm	1	B2A1218	01/12/2022	01/13/2022
---------------------------	-------	------------------	---	---------	------------	------------

Origins Laboratory, Inc.

The results in this report apply to the samples analyzed in accordance with the chain of custody document. This analytical report must be reproduced in its entirety.

Eagle Environmental Consulting, Inc.
8000 W 44th Ave
Wheat Ridge CO 80033

Martin C Eckert III
Project Number: -
Project: Noble - HSR - LDS A #10-8, 15-8 Tank Battery

WV-FS-01@5.5'

1/11/2022 1:24:00PM

Analyte	Result	Min Detection Limit	Reporting Limit	Units	Dilution	Batch	Prepared	Analyzed	Notes
---------	--------	---------------------	-----------------	-------	----------	-------	----------	----------	-------

Origins Laboratory, Inc.
Y201169-03 (Soil)

Boron (DTPA Sorbitol)

Boron	1.45	0.201	mg/L	1	B2A1208	01/12/2022	01/13/2022	
-------	------	-------	------	---	---------	------------	------------	--

DRO/ORO by EPA 8015D

Diesel (C10-C28)	ND	25.0	mg/kg	1	B2A1216	01/12/2022	01/13/2022	U
Residual Range Organics (C28-C40)	ND	100	"	"	"	"	"	U

Surrogate: o-Terphenyl	83.4 %	50-150			"	"	"
------------------------	--------	--------	--	--	---	---	---

GBTEX+TMBs by 8260D

1,2,4-Trimethylbenzene	ND	0.00200	mg/kg	1	B2A1701	01/17/2022	01/17/2022	U
1,3,5-Trimethylbenzene	ND	0.00200	"	"	"	"	"	U
Benzene	ND	0.00200	"	"	"	"	"	U
Ethylbenzene	ND	0.00200	"	"	"	"	"	U
Toluene	ND	0.00200	"	"	"	"	"	U
Xylenes, total	ND	0.00200	"	"	"	"	"	U
Gasoline Range Hydrocarbons	ND	0.200	"	"	"	"	"	U

Surrogate: 1,2-Dichloroethane-d4	109 %	70-130			"	"	"
----------------------------------	-------	--------	--	--	---	---	---

Origins Laboratory, Inc.



The results in this report apply to the samples analyzed in accordance with the chain of custody document. This analytical report must be reproduced in its entirety.

Eagle Environmental Consulting, Inc.
8000 W 44th Ave
Wheat Ridge CO 80033

Martin C Eckert III
Project Number: -
Project: Noble - HSR - LDS A #10-8, 15-8 Tank Battery

WV-FS-01@5.5'

1/11/2022 1:24:00PM

Analyte	Result	Min Detection Limit	Reporting Limit	Units	Dilution	Batch	Prepared	Analyzed	Notes
---------	--------	---------------------	-----------------	-------	----------	-------	----------	----------	-------

Origins Laboratory, Inc.
Y201169-03 (Soil)

GBTEX+TMBs by 8260D

Surrogate: Toluene-d8	82.5 %	70-130	B2A17 01	01/17/2022	01/17/2022
Surrogate: 4-Bromofluorobenzene	98.5 %	70-130	"	"	"

Metals by Saturated Paste by EPA 6010

Calcium	ND	0.499	meq/L	10	[CALC]	01/11/2022	01/14/2022
Magnesium	ND	0.823	"	"	"	"	"
Sodium	5.12	0.435	"	"	"	"	"

PAH by 8270D SIM

1-Methylnaphthalene	0.00725	0.000364	0.00067	mg/Kg	1	L594658	01/14/2022	01/17/2022
2-Methylnaphthalene	0.0103	0.000645	0.00067	"	"	"	"	"
Acenaphthene	0.00367	0.000304	0.00067	"	"	"	"	"
Anthracene	ND	0.000334	0.00067	"	"	"	"	"
Benzo(a)anthracene	0.000739	0.000493	0.00067	"	"	"	"	"
Benzo(a)pyrene	ND	0.000468	0.00067	"	"	"	"	"
Benzo(b)fluoranthene	0.00155	0.000585	0.00067	"	"	"	"	"
Benzo(k)fluoranthene	ND	0.000437	0.00067	"	"	"	"	"
Chrysene	0.00632	0.000624	0.00067	"	"	"	"	"
Dibenz(a,h)anthracene	ND	0.000614	0.00067	"	"	"	"	"
Fluoranthene	0.00224	0.000394	0.00067	"	"	"	"	"
Fluorene	0.00682	0.000286	0.00067	"	"	"	"	"

Origins Laboratory, Inc.

The results in this report apply to the samples analyzed in accordance with the chain of custody document. This analytical report must be reproduced in its entirety.

Eagle Environmental Consulting, Inc.
8000 W 44th Ave
Wheat Ridge CO 80033

Martin C Eckert III
Project Number: -
Project: Noble - HSR - LDS A #10-8, 15-8 Tank Battery

WV-FS-01@5.5'

1/11/2022 1:24:00PM

Analyte	Result	Min Detection Limit	Reporting Limit	Units	Dilution	Batch	Prepared	Analyzed	Notes
---------	--------	---------------------	-----------------	-------	----------	-------	----------	----------	-------

Waypoint Analytical, Inc.
Y201169-03 (Soil)

PAH by 8270D SIM

Indeno(1,2,3-cd)pyrene	0.000757	0.000627	0.00067	mg/Kg	1	L594658	01/14/2022	01/17/2022
Naphthalene	0.00156	0.000484	0.00067	"	"	"	"	"
Pyrene	0.0035	0.000643	0.00067	"	"	"	"	"

Surrogate: 2-Fluorobiphenyl	54.1 %	33-115	"	"	"
Surrogate: 4-Terphenyl-d14	61.3 %	33-122	"	"	"
Surrogate: Nitrobenzene-d5	56.2 %	29-110	"	"	"

pH in Soil by 9045D

pH	10.1	pH Units	1	B2A1222	01/12/2022	01/13/2022
----	------	----------	---	---------	------------	------------

SAR by 20B Saturated Paste

SAR	18.4	SAR	1	B2A1105	01/11/2022	01/14/2022
-----	------	-----	---	---------	------------	------------

Specific Conductance Mod. 9050A

Specific Conductance (EC)	1.00	0.00500	mmhos/cm	1	B2A1218	01/12/2022	01/13/2022
---------------------------	------	---------	----------	---	---------	------------	------------

Origins Laboratory, Inc.



The results in this report apply to the samples analyzed in accordance with the chain of custody document. This analytical report must be reproduced in its entirety.

Eagle Environmental Consulting, Inc.
8000 W 44th Ave
Wheat Ridge CO 80033

Martin C Eckert III
Project Number: -
Project: Noble - HSR - LDS A #10-8, 15-8 Tank Battery

WV-SS-04@4.5'

1/11/2022 1:23:00PM

Analyte	Result	Min Detection Limit	Reporting Limit	Units	Dilution	Batch	Prepared	Analyzed	Notes
---------	--------	---------------------	-----------------	-------	----------	-------	----------	----------	-------

Origins Laboratory, Inc.
Y201169-04 (Soil)

Boron (DTPA Sorbitol)

Boron	0.255	0.196	mg/L	1	B2A1208	01/12/2022	01/13/2022	
-------	-------	-------	------	---	---------	------------	------------	--

DRO/ORO by EPA 8015D

Diesel (C10-C28)	ND	25.0	mg/kg	1	B2A1216	01/12/2022	01/13/2022	U
Residual Range Organics (C28-C40)	ND	100	"	"	"	"	"	U

Surrogate: o-Terphenyl	72.3 %	50-150	"	"	"
------------------------	--------	--------	---	---	---

GBTEX+TMBs by 8260D

1,2,4-Trimethylbenzene	ND	0.00200	mg/kg	1	B2A1701	01/17/2022	01/17/2022	U
1,3,5-Trimethylbenzene	ND	0.00200	"	"	"	"	"	U
Benzene	ND	0.00200	"	"	"	"	"	U
Ethylbenzene	ND	0.00200	"	"	"	"	"	U
Toluene	ND	0.00200	"	"	"	"	"	U
Xylenes, total	ND	0.00200	"	"	"	"	"	U
Gasoline Range Hydrocarbons	ND	0.200	"	"	"	"	"	U

Surrogate: 1,2-Dichloroethane-d4	106 %	70-130	"	"	"
----------------------------------	-------	--------	---	---	---

Origins Laboratory, Inc.



The results in this report apply to the samples analyzed in accordance with the chain of custody document. This analytical report must be reproduced in its entirety.

Eagle Environmental Consulting, Inc.
8000 W 44th Ave
Wheat Ridge CO 80033

Martin C Eckert III
Project Number: -
Project: Noble - HSR - LDS A #10-8, 15-8 Tank Battery

WV-SS-04@4.5'

1/11/2022 1:23:00PM

Analyte	Result	Min Detection Limit	Reporting Limit	Units	Dilution	Batch	Prepared	Analyzed	Notes
---------	--------	---------------------	-----------------	-------	----------	-------	----------	----------	-------

Origins Laboratory, Inc.
Y201169-04 (Soil)

GBTEX+TMBs by 8260D

Surrogate: Toluene-d8	83.1 %	70-130	B2A17 01	01/17/2022	01/17/2022
Surrogate: 4-Bromofluorobenzene	98.6 %	70-130	"	"	"

Metals by Saturated Paste by EPA 6010

Calcium	1.32	0.499	meq/L	10	[CALC]	01/12/2022	01/13/2022
Magnesium	ND	0.823	"	"	"	"	"
Sodium	1.77	0.435	"	"	"	"	"

PAH by 8270D SIM

1-Methylnaphthalene	0.0012	0.000364	0.00067	mg/Kg	1	L594658	01/14/2022	01/17/2022
2-Methylnaphthalene	0.00193	0.000645	0.00067	"	"	"	"	"
Acenaphthene	0.000746	0.000304	0.00067	"	"	"	"	"
Anthracene	ND	0.000334	0.00067	"	"	"	"	"
Benzo(a)anthracene	ND	0.000493	0.00067	"	"	"	"	"
Benzo(a)pyrene	ND	0.000468	0.00067	"	"	"	"	"
Benzo(b)fluoranthene	ND	0.000585	0.00067	"	"	"	"	"
Benzo(k)fluoranthene	ND	0.000437	0.00067	"	"	"	"	"
Chrysene	ND	0.000624	0.00067	"	"	"	"	"
Dibenz(a,h)anthracene	ND	0.000614	0.00067	"	"	"	"	"
Fluoranthene	0.000459	0.000394	0.00067	"	"	"	"	"
Fluorene	0.00165	0.000286	0.00067	"	"	"	"	"

Origins Laboratory, Inc.

The results in this report apply to the samples analyzed in accordance with the chain of custody document. This analytical report must be reproduced in its entirety.

Eagle Environmental Consulting, Inc.
8000 W 44th Ave
Wheat Ridge CO 80033

Martin C Eckert III
Project Number: -
Project: Noble - HSR - LDS A #10-8, 15-8 Tank Battery

WV-SS-04@4.5'

1/11/2022 1:23:00PM

Analyte	Result	Min Detection Limit	Reporting Limit	Units	Dilution	Batch	Prepared	Analyzed	Notes
---------	--------	---------------------	-----------------	-------	----------	-------	----------	----------	-------

Waypoint Analytical, Inc.
Y201169-04 (Soil)

PAH by 8270D SIM

Indeno(1,2,3-cd)pyrene	ND	0.000627	0.00067	mg/Kg	1	L594658	01/14/2022	01/17/2022
Naphthalene	ND	0.000484	0.00067	"	"	"	"	"
Pyrene	ND	0.000643	0.00067	"	"	"	"	"

Surrogate: 2-Fluorobiphenyl	53.4 %		33-115			"	"	"
Surrogate: 4-Terphenyl-d14	66.8 %		33-122			"	"	"
Surrogate: Nitrobenzene-d5	59.5 %		29-110			"	"	"

pH in Soil by 9045D

pH	8.27			pH Units	1	B2A1222	01/12/2022	01/13/2022
----	------	--	--	----------	---	---------	------------	------------

SAR by 20B Saturated Paste

SAR	1.88			SAR	1	B2A1212	01/12/2022	01/13/2022
-----	------	--	--	-----	---	---------	------------	------------

Specific Conductance Mod. 9050A

Specific Conductance (EC)	0.342		0.00500	mmhos/cm	1	B2A1218	01/12/2022	01/13/2022
---------------------------	-------	--	---------	----------	---	---------	------------	------------

Origins Laboratory, Inc.



The results in this report apply to the samples analyzed in accordance with the chain of custody document. This analytical report must be reproduced in its entirety.

Eagle Environmental Consulting, Inc.
8000 W 44th Ave
Wheat Ridge CO 80033

Martin C Eckert III
Project Number: -
Project: Noble - HSR - LDS A #10-8, 15-8 Tank
Battery

Extractable Petroleum Hydrocarbons by 8015D - Quality Control
Origins Laboratory, Inc.

Analyte	Result	Reporting Limit	Units	Spike Level	Source Result	%REC	%REC Limits	RPD	RPD Limit	Notes
Batch B2A1216 - EPA 3550B										
Blank (B2A1216-BLK1)					Prepared: 01/12/2022 Analyzed: 01/13/2022					
Diesel (C10-C28)	ND	25.0	mg/kg							U
Residual Range Organics (C28-C40)	ND	100	"							U
Surrogate: o-Terphenyl	20		"	24.9		80.7	50-150			

Origins Laboratory, Inc.



*The results in this report apply to the samples analyzed in
accordance with the chain of custody document. This
analytical report must be reproduced in its entirety.*

Eagle Environmental Consulting, Inc.

8000 W 44th Ave

Wheat Ridge CO 80033

Martin C Eckert III

Project Number: -

Project: Noble - HSR - LDS A #10-8, 15-8 Tank
Battery

Extractable Petroleum Hydrocarbons by 8015D - Quality Control
Origins Laboratory, Inc.

Analyte	Result	Reporting Limit	Units	Spike Level	Source Result	%REC	%REC Limits	RPD	RPD Limit	Notes
---------	--------	--------------------	-------	----------------	------------------	------	----------------	-----	--------------	-------

Batch B2A1216 - EPA 3550B

LCS (B2A1216-BS1)

Prepared: 01/12/2022 Analyzed: 01/13/2022

Diesel (C10-C28)	1130	50.0	mg/kg	1000		113	70-130			
Residual Range Organics (C28-C40)	1140	200	"	1000		114	70-130			
Surrogate: o-Terphenyl	61		"	49.8		122	50-150			

Origins Laboratory, Inc.



*The results in this report apply to the samples analyzed in
accordance with the chain of custody document. This
analytical report must be reproduced in its entirety.*

Eagle Environmental Consulting, Inc.

8000 W 44th Ave

Wheat Ridge CO 80033

Martin C Eckert III

Project Number: -

Project: Noble - HSR - LDS A #10-8, 15-8 Tank Battery

Extractable Petroleum Hydrocarbons by 8015D - Quality Control
Origins Laboratory, Inc.

Analyte	Result	Reporting Limit	Units	Spike Level	Source Result	%REC	%REC Limits	RPD	RPD Limit	Notes
---------	--------	-----------------	-------	-------------	---------------	------	-------------	-----	-----------	-------

Batch B2A1216 - EPA 3550B

Matrix Spike (B2A1216-MS1)		Source: Y201158-01			Prepared: 01/12/2022 Analyzed: 01/13/2022					
Diesel (C10-C28)	1220	50.0	mg/kg	1000	ND	122	70-130			
Residual Range Organics (C28-C40)	1120	200	"	1000	ND	112	70-130			
Surrogate: o-Terphenyl	54		"	49.8		108	50-150			

Origins Laboratory, Inc.



The results in this report apply to the samples analyzed in accordance with the chain of custody document. This analytical report must be reproduced in its entirety.

Eagle Environmental Consulting, Inc.

8000 W 44th Ave

Wheat Ridge CO 80033

Martin C Eckert III

Project Number: -

Project: Noble - HSR - LDS A #10-8, 15-8 Tank Battery

Extractable Petroleum Hydrocarbons by 8015D - Quality Control
Origins Laboratory, Inc.

Analyte	Result	Reporting Limit	Units	Spike Level	Source Result	%REC	%REC Limits	RPD	RPD Limit	Notes
---------	--------	-----------------	-------	-------------	---------------	------	-------------	-----	-----------	-------

Batch B2A1216 - EPA 3550B

Matrix Spike Dup (B2A1216-MSD1)		Source: Y201158-01			Prepared: 01/12/2022 Analyzed: 01/13/2022					
Diesel (C10-C28)	1030	50.0	mg/kg	1000	ND	103	70-130	17.0	35	
Residual Range Organics (C28-C40)	909	200	"	1000	ND	90.9	70-130	20.5	35	
Surrogate: o-Terphenyl	46		"	49.8		91.6	50-150			

Origins Laboratory, Inc.



The results in this report apply to the samples analyzed in accordance with the chain of custody document. This analytical report must be reproduced in its entirety.

Eagle Environmental Consulting, Inc.
8000 W 44th Ave
Wheat Ridge CO 80033

Martin C Eckert III
Project Number: -
Project: Noble - HSR - LDS A #10-8, 15-8 Tank Battery

Extractable Petroleum Hydrocarbons by 8015D - Quality Control

Origins Laboratory, Inc.

Analyte	Result	Reporting Limit	Units	Spike Level	Source Result	%REC	%REC Limits	RPD	RPD Limit	Notes
Batch B2A1701 - EPA 5030 (soil)										
Blank (B2A1701-BLK1)					Prepared: 01/17/2022 Analyzed: 01/17/2022					
1,2,4-Trimethylbenzene	ND	0.00200	mg/kg							U
Naphthalene	ND	0.0100	"							U
1,3,5-Trimethylbenzene	ND	0.00200	"							U
Benzene	ND	0.00200	"							U
Ethylbenzene	ND	0.00200	"							U
Toluene	ND	0.00200	"							U
Xylenes, total	ND	0.00200	"							U
Gasoline Range Hydrocarbons	ND	0.200	"							U
Surrogate: 1,2-Dichloroethane-d4	0.12		"	0.125		99.1	70-130			
Surrogate: Toluene-d8	0.11		"	0.125		88.1	70-130			
Surrogate: 4-Bromofluorobenzene	0.13		"	0.125		101	70-130			

Origins Laboratory, Inc.



The results in this report apply to the samples analyzed in accordance with the chain of custody document. This analytical report must be reproduced in its entirety.

Eagle Environmental Consulting, Inc.
8000 W 44th Ave
Wheat Ridge CO 80033

Martin C Eckert III
Project Number: -
Project: Noble - HSR - LDS A #10-8, 15-8 Tank Battery

Volatile Organic Compounds by GC/MS SW846 8260D - Quality Control
Origins Laboratory, Inc.

Analyte	Result	Reporting Limit	Units	Spike Level	Source Result	%REC	%REC Limits	RPD	RPD Limit	Notes
---------	--------	-----------------	-------	-------------	---------------	------	-------------	-----	-----------	-------

Batch B2A1701 - EPA 5030 (soil)

LCS (B2A1701-BS1)

Prepared: 01/17/2022 Analyzed: 01/17/2022

1,2,4-Trimethylbenzene	0.0893	0.00200	mg/kg	0.100		89.3	70-130			
Naphthalene	0.0712	0.0100	"	0.100		71.2	70-130			
1,3,5-Trimethylbenzene	0.0887	0.00200	"	0.100		88.7	70-130			
Benzene	0.111	0.00200	"	0.100		111	70-130			
Ethylbenzene	0.0866	0.00200	"	0.100		86.6	70-130			
m,p-Xylene	0.178	0.00400	"	0.200		89.0	70-130			
o-Xylene	0.0865	0.00200	"	0.100		86.5	70-130			
Toluene	0.0871	0.00200	"	0.100		87.1	70-130			
Surrogate: 1,2-Dichloroethane-d4	0.12		"	0.125		97.0	70-130			
Surrogate: Toluene-d8	0.11		"	0.125		90.6	70-130			
Surrogate: 4-Bromofluorobenzene	0.12		"	0.125		99.6	70-130			

Origins Laboratory, Inc.

The results in this report apply to the samples analyzed in accordance with the chain of custody document. This analytical report must be reproduced in its entirety.

Eagle Environmental Consulting, Inc.
8000 W 44th Ave
Wheat Ridge CO 80033

Martin C Eckert III
Project Number: -
Project: Noble - HSR - LDS A #10-8, 15-8 Tank Battery

Volatile Organic Compounds by GC/MS SW846 8260D - Quality Control
Origins Laboratory, Inc.

Analyte	Result	Reporting Limit	Units	Spike Level	Source Result	%REC	%REC Limits	RPD	RPD Limit	Notes
Batch B2A1701 - EPA 5030 (soil)										
Matrix Spike (B2A1701-MS1)		Source: Y201158-01			Prepared: 01/17/2022 Analyzed: 01/17/2022					
1,2,4-Trimethylbenzene	0.0937	0.00200	mg/kg	0.100	ND	93.7	70-130			
Naphthalene	0.0731	0.0100	"	0.100	0.000940	72.1	70-130			
1,3,5-Trimethylbenzene	0.0933	0.00200	"	0.100	ND	93.3	70-130			
Benzene	0.125	0.00200	"	0.100	ND	125	70-130			
Ethylbenzene	0.0915	0.00200	"	0.100	ND	91.5	70-130			
m,p-Xylene	0.188	0.00400	"	0.200	ND	94.1	70-130			
o-Xylene	0.0914	0.00200	"	0.100	ND	91.4	70-130			
Toluene	0.0944	0.00200	"	0.100	ND	94.4	70-130			
Surrogate: 1,2-Dichloroethane-d4	0.12		"	0.125		96.0	70-130			
Surrogate: Toluene-d8	0.11		"	0.125		88.7	70-130			
Surrogate: 4-Bromofluorobenzene	0.12		"	0.125		99.7	70-130			

Origins Laboratory, Inc.

The results in this report apply to the samples analyzed in accordance with the chain of custody document. This analytical report must be reproduced in its entirety.

Eagle Environmental Consulting, Inc.
8000 W 44th Ave
Wheat Ridge CO 80033

Martin C Eckert III
Project Number: -
Project: Noble - HSR - LDS A #10-8, 15-8 Tank Battery

Volatile Organic Compounds by GC/MS SW846 8260D - Quality Control
Origins Laboratory, Inc.

Analyte	Result	Reporting Limit	Units	Spike Level	Source Result	%REC	%REC Limits	RPD	RPD Limit	Notes
Batch B2A1701 - EPA 5030 (soil)										
Matrix Spike Dup (B2A1701-MSD1)		Source: Y201158-01			Prepared: 01/17/2022 Analyzed: 01/17/2022					
1,2,4-Trimethylbenzene	0.0861	0.00200	mg/kg	0.100	ND	86.1	70-130	8.39	20	
Naphthalene	0.0704	0.0100	"	0.100	0.000940	69.4	70-130	3.77	20	QM-07
1,3,5-Trimethylbenzene	0.0854	0.00200	"	0.100	ND	85.4	70-130	8.75	20	
Benzene	0.118	0.00200	"	0.100	ND	118	70-130	5.11	20	
Ethylbenzene	0.0839	0.00200	"	0.100	ND	83.9	70-130	8.71	20	
m,p-Xylene	0.172	0.00400	"	0.200	ND	86.0	70-130	8.95	20	
o-Xylene	0.0839	0.00200	"	0.100	ND	83.9	70-130	8.56	20	
Toluene	0.0878	0.00200	"	0.100	ND	87.8	70-130	7.18	20	
Surrogate: 1,2-Dichloroethane-d4	0.12		"	0.125		98.0	70-130			
Surrogate: Toluene-d8	0.11		"	0.125		86.3	70-130			
Surrogate: 4-Bromofluorobenzene	0.12		"	0.125		98.6	70-130			

Origins Laboratory, Inc.

The results in this report apply to the samples analyzed in accordance with the chain of custody document. This analytical report must be reproduced in its entirety.

Eagle Environmental Consulting, Inc.
8000 W 44th Ave
Wheat Ridge CO 80033

Martin C Eckert III
Project Number: -
Project: Noble - HSR - LDS A #10-8, 15-8 Tank Battery

Volatile Organic Compounds by GC/MS SW846 8260D - Quality Control
Origins Laboratory, Inc.

Analyte	Result	Reporting Limit	Units	Spike Level	Source Result	%REC	%REC Limits	RPD	RPD Limit	Notes
---------	--------	-----------------	-------	-------------	---------------	------	-------------	-----	-----------	-------

Saturated Paste - Quality Control
Origins Laboratory, Inc.

Analyte	Result	Reporting Limit	Units	Spike Level	Source Result	%REC	%REC Limits	RPD	RPD Limit	Notes
---------	--------	-----------------	-------	-------------	---------------	------	-------------	-----	-----------	-------

Batch B2A1218 - NO PREP

Blank (B2A1218-BLK1)

Prepared: 01/12/2022 Analyzed: 01/13/2022

Specific Conductance (EC) 0.000700 0.00500 mmhos/cm

Duplicate (B2A1218-DUP1)

Source: Y201164-01

Prepared: 01/12/2022 Analyzed: 01/13/2022

Specific Conductance (EC) 0.965 0.00500 mmhos/cm 0.979 1.42 25

Batch B2A1222 - NO PREP

Duplicate (B2A1222-DUP1)

Source: Y201164-01

Prepared: 01/12/2022 Analyzed: 01/13/2022

pH 7.96 pH Units 7.95 0.126 25

Origins Laboratory, Inc.

The results in this report apply to the samples analyzed in accordance with the chain of custody document. This analytical report must be reproduced in its entirety.

Eagle Environmental Consulting, Inc.
8000 W 44th Ave
Wheat Ridge CO 80033

Martin C Eckert III
Project Number: -
Project: Noble - HSR - LDS A #10-8, 15-8 Tank
Battery

PAH by 8270D SIM - Quality Control
Waypoint Analytical, Inc.

Analyte	Result	Reporting Limit	Units	Spike Level	Source Result	%REC	%REC Limits	RPD	RPD Limit	Notes
---------	--------	-----------------	-------	-------------	---------------	------	-------------	-----	-----------	-------

Batch L594658 - 3550B

MSD (L 96013-MSD-L594658)		Source: 96013			Prepared: 01/14/2022 Analyzed: 01/17/2022					
Naphthalene	0.0818	0.000484	mg/Kg	0.165	<0.000484	49.5	30-130	2.1	30	
Indeno(1,2,3-cd)pyrene	0.101	0.000627	"	0.165	<0.000627	61.2	30-130	19.8	30	
Fluorene	0.0973	0.000286	"	0.165	<0.000286	58.9	30-130	0.2	30	
Fluoranthene	0.103	0.000394	"	0.165	<0.000394	62.4	30-130	3.8	30	
Dibenz(a,h)anthracene	0.107	0.000614	"	0.165	<0.000614	64.8	30-130	13.6	30	
Benzo(b)fluoranthene	0.0987	0.000585	"	0.165	<0.000585	59.8	30-130	13	30	
Chrysene	0.119	0.000624	"	0.165	<0.000624	72.1	30-130	2.4	30	
Benzo(k)fluoranthene	0.0909	0.000437	"	0.165	<0.000437	55	30-130	4.5	30	
Pyrene	0.116	0.000643	"	0.165	<0.000643	70.3	30-130	1.7	30	
1-Methylnaphthalene	0.085	0.000364	"	0.165	<0.000364	51.5	30-130	0.2	30	
Benzo(a)anthracene	0.108	0.000493	"	0.165	<0.000493	65.4	30-130	3.6	30	
Anthracene	0.0979	0.000334	"	0.165	<0.000334	59.3	30-130	2.1	30	
Acenaphthene	0.0949	0.000304	"	0.165	<0.000304	57.5	30-130	0.9	30	
2-Methylnaphthalene	0.0853	0.000645	"	0.165	<0.000645	51.6	30-130	0.4	30	
Benzo(a)pyrene	0.114	0.000468	"	0.165	<0.000468	69	30-130	0.8	30	
Surrogate: Nitrobenzene-d5	56		"	0.33	202	56	29-110			
Surrogate: 4-Terphenyl-d14	65.7		"	0.33	243	65.7	33-122			
Surrogate: 2-Fluorobiphenyl	51.2		"	0.33	205	51.2	33-115			

MS (L 96013-MS-L594658)		Source: 96013			Prepared: 01/14/2022 Analyzed: 01/17/2022					
Dibenz(a,h)anthracene	0.0933	0.000614	mg/Kg	0.164	<0.000614	56.8	30-130			
Fluoranthene	0.107	0.000394	"	0.164	<0.000394	65.2	30-130			
Fluorene	0.0971	0.000286	"	0.164	<0.000286	59.2	30-130			
Indeno(1,2,3-cd)pyrene	0.0828	0.000627	"	0.164	<0.000627	50.4	30-130			
Chrysene	0.122	0.000624	"	0.164	<0.000624	74.3	30-130			
Anthracene	0.1	0.000334	"	0.164	<0.000334	60.9	30-130			
Naphthalene	0.0836	0.000484	"	0.164	<0.000484	50.9	30-130			

Origins Laboratory, Inc.

The results in this report apply to the samples analyzed in accordance with the chain of custody document. This analytical report must be reproduced in its entirety.

Eagle Environmental Consulting, Inc.
8000 W 44th Ave
Wheat Ridge CO 80033

Martin C Eckert III
Project Number: -
Project: Noble - HSR - LDS A #10-8, 15-8 Tank
Battery

PAH by 8270D SIM - Quality Control
Waypoint Analytical, Inc.

Analyte	Result	Reporting Limit	Units	Spike Level	Source Result	%REC	%REC Limits	RPD	RPD Limit	Notes
---------	--------	-----------------	-------	-------------	---------------	------	-------------	-----	-----------	-------

Batch L594658 - 3550B

MS (L 96013-MS-L594658)		Source: 96013			Prepared: 01/14/2022 Analyzed: 01/17/2022					
Benzo(k)fluoranthene	0.0951	0.000437	mg/Kg	0.164	<0.000437	57.9	30-130			
Benzo(b)fluoranthene	0.0866	0.000585	"	0.164	<0.000585	52.8	30-130			
Pyrene	0.118	0.000643	"	0.164	<0.000643	71.9	30-130			
Benzo(a)anthracene	0.112	0.000493	"	0.164	<0.000493	68.2	30-130			
Acenaphthene	0.0958	0.000304	"	0.164	<0.000304	58.4	30-130			
2-Methylnaphthalene	0.0849	0.000645	"	0.164	<0.000645	51.7	30-130			
1-Methylnaphthalene	0.0848	0.000364	"	0.164	<0.000364	51.7	30-130			
Benzo(a)pyrene	0.113	0.000468	"	0.164	<0.000468	68.9	30-130			
Surrogate: Nitrobenzene-d5	55.9		"	0.329	202	55.9	29-110			
Surrogate: 4-Terphenyl-d14	68.9		"	0.329	243	68.9	33-122			
Surrogate: 2-Fluorobiphenyl	52.2		"	0.329	205	52.2	33-115			

LCS (LCS-L594658)		Prepared: 01/14/2022 Analyzed: 01/17/2022								
Acenaphthene	0.0989	0.000304	mg/Kg	0.167		59.2	30-130			
Chrysene	0.124	0.000624	"	0.167		74.2	30-130			
Pyrene	0.106	0.000643	"	0.167		63.4	30-130			
Naphthalene	0.0861	0.000484	"	0.167		51.5	30-130			
Indeno(1,2,3-cd)pyrene	0.137	0.000627	"	0.167		82	30-130			
Fluorene	0.102	0.000286	"	0.167		61	30-130			
2-Methylnaphthalene	0.0872	0.000645	"	0.167		52.2	30-130			
Dibenz(a,h)anthracene	0.144	0.000614	"	0.167		86.2	30-130			
1-Methylnaphthalene	0.0876	0.000364	"	0.167		52.4	30-130			
Benzo(k)fluoranthene	0.109	0.000437	"	0.167		65.2	30-130			
Benzo(b)fluoranthene	0.0914	0.000585	"	0.167		54.7	30-130			
Benzo(a)pyrene	0.121	0.000468	"	0.167		72.4	30-130			
Benzo(a)anthracene	0.116	0.000493	"	0.167		69.4	30-130			
Anthracene	0.102	0.000334	"	0.167		61	30-130			

Origins Laboratory, Inc.

The results in this report apply to the samples analyzed in accordance with the chain of custody document. This analytical report must be reproduced in its entirety.

Eagle Environmental Consulting, Inc.
8000 W 44th Ave
Wheat Ridge CO 80033

Martin C Eckert III
Project Number: -
Project: Noble - HSR - LDS A #10-8, 15-8 Tank Battery

PAH by 8270D SIM - Quality Control
Waypoint Analytical, Inc.

Analyte	Result	Reporting Limit	Units	Spike Level	Source Result	%REC	%REC Limits	RPD	RPD Limit	Notes
---------	--------	-----------------	-------	-------------	---------------	------	-------------	-----	-----------	-------

Batch L594658 - 3550B

LCS (LCS-L594658)

Prepared: 01/14/2022 Analyzed: 01/17/2022

Fluoranthene	0.107	0.000394	mg/Kg	0.167		64	30-130			
Surrogate: Nitrobenzene-d5	62.4		"	0.333		62.4	29-110			
Surrogate: 4-Terphenyl-d14	71.7		"	0.333		71.7	33-122			
Surrogate: 2-Fluorobiphenyl	56.4		"	0.333		56.4	33-115			

LRB (LRB-L594658)

Prepared: 01/14/2022 Analyzed: 01/17/2022

Fluoranthene	ND	0.00067	mg/Kg				-			
Benzo(a)pyrene	ND	0.00067	"				-			
Pyrene	ND	0.00067	"				-			
Naphthalene	ND	0.00067	"				-			
Indeno(1,2,3-cd)pyrene	ND	0.00067	"				-			
Fluorene	ND	0.00067	"				-			
Dibenz(a,h)anthracene	ND	0.00067	"				-			
Chrysene	ND	0.00067	"				-			
Benzo(b)fluoranthene	ND	0.00067	"				-			
1-Methylnaphthalene	ND	0.00067	"				-			
Benzo(a)anthracene	ND	0.00067	"				-			
Anthracene	ND	0.00067	"				-			
Acenaphthene	ND	0.00067	"				-			
2-Methylnaphthalene	ND	0.00067	"				-			
Benzo(k)fluoranthene	ND	0.00067	"				-			
Surrogate: Nitrobenzene-d5	57		"	0.333		57	29-110			
Surrogate: 4-Terphenyl-d14	67.8		"	0.333		67.8	33-122			
Surrogate: 2-Fluorobiphenyl	59.7		"	0.333		59.7	33-115			

Origins Laboratory, Inc.

The results in this report apply to the samples analyzed in accordance with the chain of custody document. This analytical report must be reproduced in its entirety.

Eagle Environmental Consulting, Inc.

8000 W 44th Ave

Wheat Ridge CO 80033

Martin C Eckert III

Project Number: -

Project: Noble - HSR - LDS A #10-8, 15-8 Tank
Battery

Notes and Definitions

U Sample is Non-Detect.

QM-07 The spike recovery was outside acceptance limits for the MS and/or MSD. The batch was accepted based on acceptable LCS recovery.

J Estimated Value. Analyte below reported quantitation limit.

ND Analyte NOT DETECTED at or above the reporting limit

RPD Relative Percent Difference

All soil results are reported on a wet weight basis.

Origins Laboratory, Inc.



The results in this report apply to the samples analyzed in accordance with the chain of custody document. This analytical report must be reproduced in its entirety.