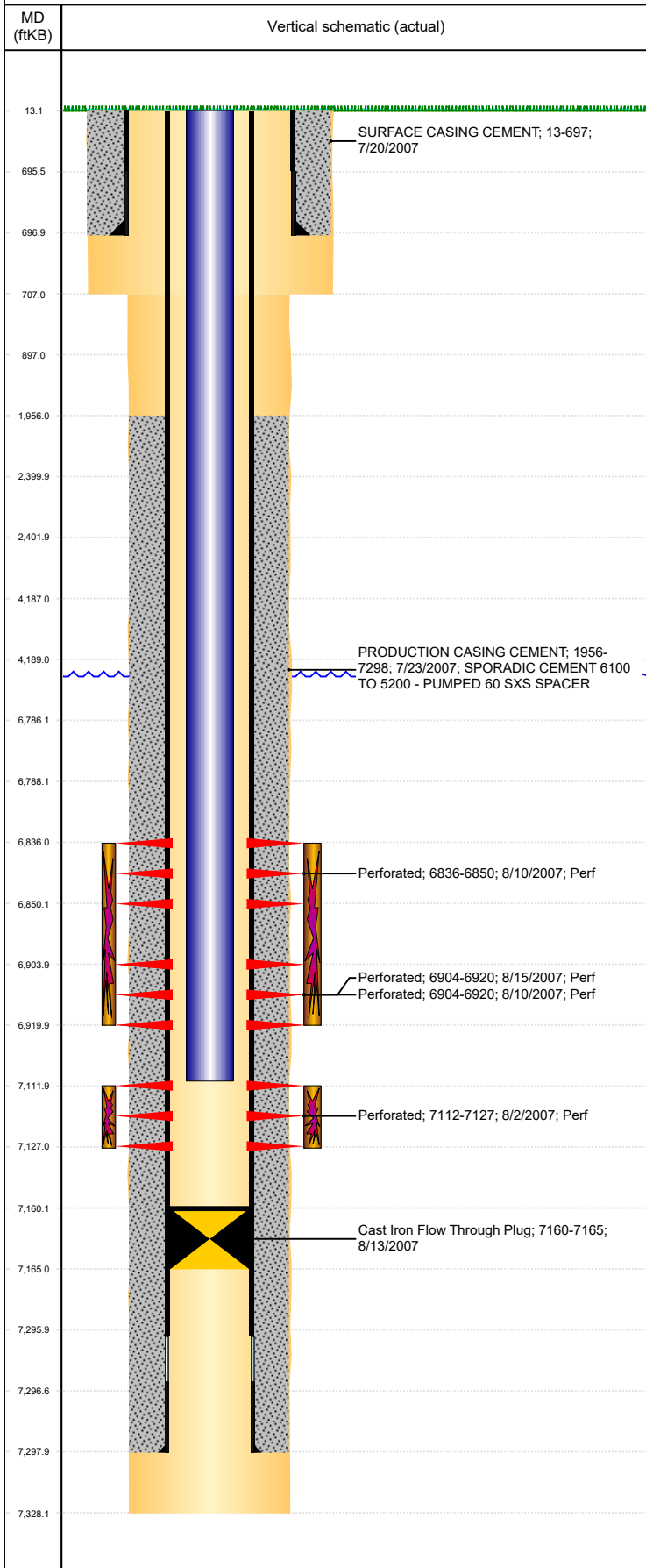




P&A Wellbore For State

Well Name: OCONNELL C31-18

Land, Original Hole, 6/27/2022 11:51:43 AM



Well Header										
Surface UWI 0512326059			Business Unit Rockies			Gov Auth Dist		Prod Tree Loc Land		
Orig. KB to Gnd (ft) 13.00		Original Spud Date 7/20/2007		Abandon Date		Well Sub-Status SI			High... N	
Comment DISCREPANCY: DR RPT SURF CSG @ 697'/707'; ST RPT SURF CSG @ 707'; SURF HOLE @ 707'										
Surface Location (Congressional)										
Qtr 3 SW	Qtr 4 NE	Section 31	Twship 4	Twshshp... N	Range 64	Rng E/W W	Latitude (°) 40.27216505 4	Longitude (°) -104.593023117		
Wellbore Sections										
Section Des			Hole Size (in)			Act Top (ftKB)		Act Btm (ftKB)		
SURFACE			12 1/4			13.0		707.0		
Production			7 7/8			707.0		7,328.0		
Casing Strings										
Csg Des			Run Date		OD (in)	Wt/Len (lb/ft)	Grade	Top Depth (MD) (ftKB)	Set Depth (MD) (ftKB)	
Surface			7/20/2007		8 5/8	24.00	J-55	13	697	
Production Casing			7/23/2007		4 1/2	11.60	N-80	13	7298	
Cement										
Des					Start Date		Top (ftKB)		Btm (ftKB)	
SURFACE CASING CEMENT					7/20/2007		13.0		697.0	
PRODUCTION CASING CEMENT					7/23/2007		1,956.0		7,298.0	
Zone Statuses										
Zone Name		Status Date	Status	Fluid Type	Job				Prod Method	
CODELL		8/24/2007	PR	Water	DRILLING/COMPLETION - ORIGINAL, 7/20/2007...				Flowing	
CODELL		4/24/2010	PR							
NIOBRARA		11/29/2016	SI							
NIOBRARA		3/22/2017	SI							
Perforation Data										
Linked Zone			Explosive Type	Entered Shot Total	Top (ftKB)		Btm (ftKB)		Date	
NIOBRARA, Original Hole				56	6,836.0		6,850.0		8/10/2007	
NIOBRARA, Original Hole				64	6,904.0		6,920.0		8/10/2007	
NIOBRARA, Original Hole				64	6,904.0		6,920.0		8/15/2007	
CODELL, Original Hole				60	7,112.0		7,127.0		8/2/2007	
Stimulation Intervals										
Zone				Start Date		Top (ftKB)		Btm (ftKB)		
NIOBRARA, Original Hole				8/17/2007		6,836.0		6,920.0		
CODELL, Original Hole				8/13/2007		7,112.0		7,127.0		
Other In Hole										
Run Date		Des			Make		OD (in)	Top (ftKB)	Btm (ftKB)	
8/13/2007		Cast Iron Flow Through Plug					4	7,160.0	7,165.0	
Logs										
Date		Type					Depth Top (MD) (ftKB)		Btm (ftKB)	
7/23/2007		COMPENSATED DENSITY					2,700		7,305.0	
7/23/2007		INDUCTION					697		7,305.0	
7/30/2007		CEMENT BOND					1,840		7,259.0	
Plug Back Total Depths										
Date		Type			Com				PBTD (ftKB)	
7/30/2007		FILL			DEPTH LOGGER ON CBL				7,266	
11/14/2007		PLUG			PUSH PLUG TO LAND TUBING				7,160	