

# Wellhead Closure Checklist

## COGCC Rule 911.a.(4) Environmental Site Closure Assessment Field Form

Additional attachments (optional):		Pit Closure		Tank Battery Closure		Flowline Closure 4-2-18	Partially Buried Vault Closure
Site Name & COGCC Facility Number: Hoffner #13-35		Date: 12-29-21					Remediation Project #: 202-60
Associated Wells: 1 05-123-22813		Age of Site: Years					Number of Photos Attached: 1
Location: (GPS coordinates of wellhead or southeastern most wellhead for multiple) 40.441589/-104.525132						Estimated Facility Size (acres):	
General Condition of Site: (General observations regarding housekeeping, corrosion, waste management, etc.) <div style="text-align: center; font-size: 1.2em;">Good Condition</div>							
USCS Soil Type: SW				Estimated Depth to Groundwater: ~6-15'			
Hydrocarbon Impacted Soils / Spills: (Note estimated size and if impact appears to be surficial or extends to an unknown depth) <div style="text-align: center; font-size: 1.2em;">None observed</div>							
Saline Crusted Soils or Impacted Vegetation: (Note estimated size and if impact appears to be surficial or extends to an unknown depth) <div style="text-align: center; font-size: 1.2em;">None observed</div>							
<b>Wellhead(s)</b>							
Well API	05-123-22813						
Age	Years						
Condition of surface around wellhead	Good - Per Crew						
PID Readings	N/A - Excavated upon arrival						
Condition of subsurface (retaining present)	Good - no staining / no odor						
PID Readings	6.6	5.9	4.8	6.5	8.2		
Sample taken? Location/Sample ID#	WH-SS-01 e4'	WH-SS-02 e4'	WH-SS-03 e4'	WH-SS-04 e4'	WH-SS-05 e5'		
Photo Number(s)	See photolog						
Other observations regarding wellheads: <div style="text-align: center; font-size: 1.2em;">Riser cut/capped after assessment</div>							
<b>Summary</b>							
Was impacted soil identified? <div style="display: flex; justify-content: space-between;"> <span><input checked="" type="radio"/> No</span> <span>Yes - less than 10 cubic yards</span> <span>Yes - more than 10 cubic yards</span> </div>							
Total number of samples field screened: 5				Total number of samples collected: 5			
Highest PID Reading: 8.2				Total number of samples submitted to lab for analysis: 1			
If more than 10 cubic yards of impacted soil were observed:							
Vertical extent:				Estimated spill volume:			
Lateral extent: N/A				Volume of soil removed:			
Is additional investigation required?							
Was groundwater encountered during the investigation? <div style="display: flex; justify-content: space-between;"> <span><input checked="" type="radio"/> No</span> <span>Yes - not impacted or in contact with impacted soils</span> <span>Yes - groundwater impacted and/or in contact with impacted soils</span> </div>							
Measured depth to groundwater:				Was remedial groundwater removal conducted? Yes No			
Date Groundwater was encountered:				Commencement date of removal:			
Seen on groundwater? Yes No				Volume of groundwater removed prior to sampling:			
Free product observed? Yes No				Volume of groundwater removed post sampling:			
Total number of samples collected:				Total Volume of groundwater removed:			
Total number of samples submitted to lab for analysis:							



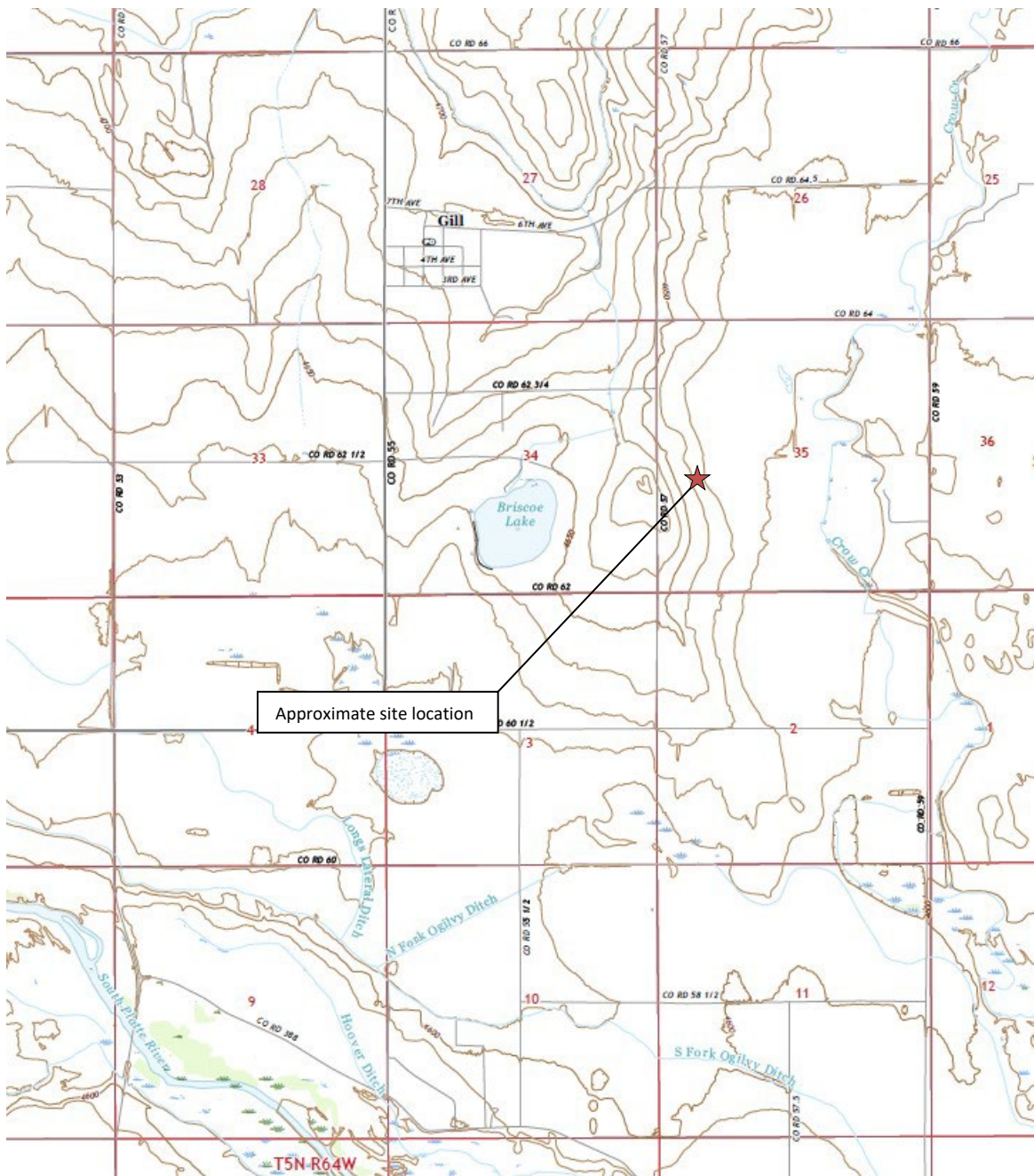
## **FIGURES**

**Figure 1: Topographic Site Location Map**

**Figure 2: Aerial Site Location Map**

**Figure 3: Soil Analytical Map**

**Figure 4: Polycyclic Aromatic Hydrocarbons Map**



#### **Topographic Site Location Map**

Hoffner #13-35  
 Closure Assessment  
 40.441589 / -104.525132  
 NW¼ SW¼ SEC.35 T6N R64W 6PM  
 Weld County, Colorado  
 API # 05-123-22813  
 Remediation # 20260



**EAGLE**  
 ENVIRONMENTAL  
 CONSULTING, INC.

Source: USGS 7.5 Minute Topographic  
 Map, Kersey, CO Quadrangle 2019

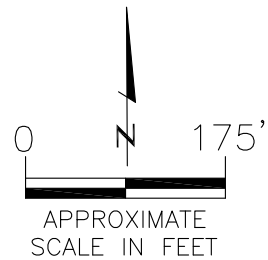
**Figure 1**





LEGEND

FORMER HOFFNER #13-35 WELLHEAD (PLUGGED AND ABANDONED)



AERIAL SITE LOCATION MAP  
 HOFFNER #13-35  
 CLOSURE ASSESSMENT  
 40.441589 / -104.525132  
 NW¼ SW¼ SEC.35 T6N R64W 6PM  
 WELD COUNTY, COLORADO  
 API # 05-123-22813  
 REMEDIATION # 20260

DATE: 03/17/2022

FIG. NO.  
2

DRAWN BY:  
RTG

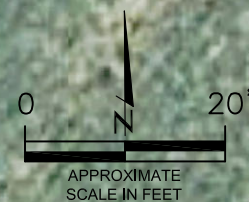


**EAGLE**  
 ENVIRONMENTAL  
 CONSULTING, INC.  
 8000 W 44th Ave, Wheat Ridge, CO 80033  
 Ph: 303-433-0479 • F: 303-325-5449



WH-FS-01@5'  
12/29/21  
5'  
B = <0.00200  
T = <0.00200  
E = <0.00200  
X = <0.00200  
G = <0.200  
D = 51.4  
R = <100  
1,2,4-TMB = <0.00200  
1,3,5-TMB = <0.00200  
Brn= 0.851  
EC = 3.44  
SAR= 1.14  
pH = 7.75

WH-SS-01  
WH-SS-04  
WH-FS-01  
WH-SS-03  
WH-SS-02



# LEGEND

- INITIAL ASSESSMENT BOUNDARIES
- APPROXIMATE LOCATION OF SOIL SAMPLES FIELD SCREENED, ONLY, WITH PHOTOIONIZATION DETECTOR
- APPROXIMATE LOCATION OF SOIL SAMPLES SUBMITTED FOR LABORATORY ANALYSIS

## PARAMETERS

SAMPLE LOCATION  
DATE  
DEPTH (FEET)  
B = BENZENE (mg/kg)  
T = TOLUENE (mg/kg)  
E = ETHYLBENZENE (mg/kg)  
X = TOTAL XYLENES (mg/kg)  
G = TPH-GRO (mg/kg)  
D = TPH-DRO (mg/kg)  
R = TPH-RRO (mg/kg)  
1,2,4-TMB = 1,2,4 TRIMETHYLBENZENE (mg/kg)  
1,3,5-TMB = 1,3,5 TRIMETHYLBENZENE (mg/kg)  
Brn= BORON (mg/L)  
EC = SPECIFIC CONDUCTANCE (mmhos/cm)  
SAR= SODIUM ADSORPTION RATIO  
pH = pH (pH UNITS)

mg/kg = MILLIGRAMS PER KILOGRAM  
mg/L = MILLIGRAMS PER LITER  
mmhos/cm = MILLIMHOS PER CENTIMETER

TPH-GRO = TOTAL PETROLEUM HYDROCARBONS - GASOLINE RANGE ORGANICS  
TPH-DRO = TOTAL PETROLEUM HYDROCARBONS - DIESEL RANGE ORGANICS  
TPH-RRO = TOTAL PETROLEUM HYDROCARBONS - RESIDUAL RANGE ORGANICS

NOTES:  
VALUES PRESENTED WITH A LESS THAN SYMBOL (<) DID NOT CONTAIN CONCENTRATIONS AT OR ABOVE LABORATORY DETECTION LIMITS

VALUES PRESENTED IN **BOLD** VALUES CONTAIN CONCENTRATIONS THAT EXCEED COGCC TABLE 915-1 REGULATORY LIMITS FOR THAT COMPOUND.

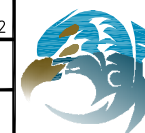
COGCC = COLORADO OIL AND GAS CONSERVATION COMMISSION

SOIL ANALYTICAL MAP  
HOFFNER #13-35  
CLOSURE ASSESSMENT  
40.441589 / -104.525132  
NW¼ SW¼ SEC.35 T6N R64W 6PM  
WELD COUNTY, COLORADO  
API # 05-123-22813  
REMEDATION # 20260

DATE:  
03/17/22

DRAWN BY:  
RTG

FIG.  
NO. 3

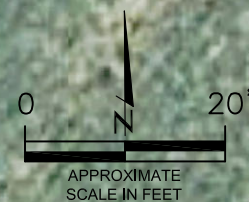


**EAGLE**  
ENVIRONMENTAL  
CONSULTING, INC.  
8000 W 44th Ave, Wheat Ridge, CO 80033  
Ph: 303-433-0479 • F: 303-325-5449



WH-FS-01@5'  
12/29/21  
5'  
ND = <0.00067  
1-Methylnaphthalene = 0.000852  
2-Methylnaphthalene = 0.00114  
Acenaphthene = 0.0005  
Anthracene = 0.000332  
Benzo(a)anthracene = 0.000588  
Benzo(a)pyrene = 0.000731  
Benzo(b)fluoranthene = 0.000667  
Benzo(k)fluoranthene = 0.000279  
Chrysene = 0.00136  
Dibenzo(a,h)anthracene = ND  
Fluoranthene = 0.0016  
Fluorene = 0.00191  
Indeno(1,2,3-CD)pyrene = 0.000512  
Naphthalene = ND  
Pyrene = 0.00193

WH-SS-01  
WH-SS-04  
WH-FS-01  
WH-SS-03  
WH-SS-02



# LEGEND

- INITIAL ASSESSMENT BOUNDARIES
- SS-02 APPROXIMATE LOCATION OF SOIL SAMPLES FIELD SCREENED, ONLY, WITH PHOTOIONIZATION DETECTOR
- SS-02 APPROXIMATE LOCATION OF SOIL SAMPLES SUBMITTED FOR LABORATORY ANALYSIS

## PARAMETERS

SAMPLE LOCATION  
DATE SAMPLE COLLECTED  
APPROXIMATE DEPTH

POLYCYCLIC AROMATIC HYDROCARBONS (PAHs)

NOTE:  
CONCENTRATIONS PRESENTED IN mg/kg

mg/kg = MILLIGRAMS PER KILOGRAM

ND = NON-DETECT

NOTE:  
VALUES PRESENTED WITH A LESS THAN SYMBOL (<) DID NOT CONTAIN CONCENTRATIONS AT OR ABOVE LABORATORY DETECTION LIMITS

VALUES PRESENTED IN **BOLD** VALUES CONTAIN CONCENTRATIONS EXCEEDING COGCC TABLE 915-1 REGULATORY LIMITS.

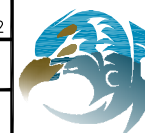
COGCC = COLORADO OIL AND GAS CONSERVATION COMMISSION

POLYCYCLIC AROMATIC HYDROCARBONS MAP  
HOFFNER #13-35  
CLOSURE ASSESSMENT  
40.441589 / -104.525132  
NW¼ SW¼ SEC.35 T6N R64W 6PM  
WELD COUNTY, COLORADO  
API # 05-123-22813  
REMEDATION # 20260

DATE:  
03/17/22

DRAWN BY:  
RTG

FIG.  
NO. 4



**EAGLE**  
ENVIRONMENTAL  
CONSULTING, INC.  
8000 W 44th Ave, Wheat Ridge, CO 80033  
Ph: 303-433-0479 • F: 303-325-5449



## **TABLES**

**Table 1: Photoionization Detector Reading Summary**

**Table 2: Soil Analytical Results Summary**

**Table 3: Polycyclic Aromatic Hydrocarbons Analytical Results Summary**

**TABLE 1**  
**PHOTOIONIZATION DETECTOR READING SUMMARY**  
**HOFFNER #13-35**  
**CLOSURE ASSESSMENT**  
**40.441589 / -104.525132**  
**NW1/4 SW1/4 SEC.35 T6N R64W 6PM**  
**WELD COUNTY, COLORADO**  
**API # 05-123-22813**  
**REMEDATION # 20260**

Sample Location (Latitude/Longitude)	Date	Approximate Depth (feet)	PID Reading (ppm-v)	Lab Submission (Y/N)
WH-SS-01 @ 4' (40.441605 / -104.525141)	12/29/21	4	6.6	N
WH-SS-02 @ 4' (40.441588 / -104.525121)	12/29/21	4	5.9	N
WH-SS-03 @ 4' (40.441574 / -104.525138)	12/29/21	4	4.8	N
WH-SS-04 @ 4' (40.441589 / -104.525158)	12/29/21	4	6.5	N
WH-FS-01 @ 5' (40.441590 / -104.525140)	12/29/21	5	8.2	Y
(Y/N) = Yes or No ppm-v = parts per million by volume PID = Photoionization Detector				



TABLE 2  
SOIL ANALYTICAL RESULTS SUMMARY  
HOFFNER #13-35  
CLOSURE ASSESSMENT  
40.441589 / -104.525132  
NW1/4 SW1/4 SEC.35 T6N R64W 6PM  
WELD COUNTY, COLORADO  
API # 05-123-22813  
REMEDATION # 20260

Sample Location (Latitude/Longitude)	Date	Approximate Depth (feet)	PID Reading (ppm-v)	Benzene (mg/kg)	Toluene (mg/kg)	Ethylbenzene (mg/kg)	Total Xylenes (mg/kg)	TPH-GRO (mg/kg)	TPH-DRO (mg/kg)	TPH-RRO (mg/kg)	1,2,4-TMB (mg/kg)	1,3,5-TMB (mg/kg)	Boron (mg/L)	Specific Conductance (mmhos/cm)	pH (pH units)	SAR
COGCC Table 915-1 Residential Screening Levels (mg/kg)				1.20	490	5.8	58	500			30	27	2	<4	6-8.3	<6
COGCC Table 915-1 Protection of Groundwater Soil Screening Levels				0.0026	0.69	0.78	9.9	--			0.0081	0.0087	--	--	--	--
WH-FS-01 @ 5' (40.441590 / -104.525140)	12/29/21	5	8.2	<0.00200	<0.00200	<0.00200	<0.00200	<0.200	51.4	<100	<0.00200	<0.00200	0.851	3.44	7.75	1.14

COGCC = Colorado Oil and Gas Conservation Commission  
mg/kg = milligrams per kilogram  
mmhos/cm = millimhos per centimeter  
PID = Photoionization Detector  
ppm-v = parts per million by volume  
mg/L = milligrams per liter  
SAR = Sodium Adsorption Ratio  
Note: Values presented with a less than symbol (<) did not contain concentrations at or above the laboratory MDL and/or reporting limit.  
Note: Values presented in **BOLD** contained concentrations exceeding COGCC Table 915-1 Regulatory Limits

NA - Not Analyzed

TPH-GRO = Total Petroleum Hydrocarbons - Gasoline Range Organics  
TPH-DRO = Total Petroleum Hydrocarbons - Diesel Range Organics  
TPH-RRO = Total Petroleum Hydrocarbons - Residual Range Organics

1,2,4-TMB = 1,2,4-Trimethybenzene  
1,3,5-TMB = 1,3,5-Trimethybenzene

MDL = Minimum Detection Limits

TABLE 3  
POLYCYCLIC AROMATIC HYDROCARBONS ANALYTICAL RESULTS SUMMARY  
HOFFNER #13-35  
CLOSURE ASSESSMENT  
40.441589 / -104.525132  
NW1/4 SW1/4 SEC.35 T6N R64W 6PM  
WELD COUNTY, COLORADO  
API # 05-123-22813  
REMEDIATION # 20260

Sample Location (Latitude/Longitude)	Date	Approximate Depth (feet)	PID Reading (ppm- v)	1-Methyl- naphthalene (mg/kg)	2-Methyl- naphthalene (mg/kg)	Acenaphthene (mg/kg)	Anthracene (mg/kg)	Benzo(a)-anthracene (mg/kg)	Benzo(a)- pyrene (mg/kg)	Benzo(b)- fluoranthene (mg/kg)	Benzo(k)- fluoranthene (mg/kg)	Chrysene (mg/kg)	Dibenzo(a,h)- anthracene (mg/kg)	Fluoranthene (mg/kg)	Fluorene (mg/kg)	Indeno(1,2,3- cd)-pyrene (mg/kg)	Naphthalene (mg/kg)	Pyrene (mg/kg)
COGCC Table 915-1 Residential Screening Levels				18	24	360	1,800	1.1	0.11	1.1	11	110	0.11	240	240	1.1	2	180
COGCC Table 915-1 Protection of Groundwater Soil Screening Levels				0.006	0.019	0.55	5.8	0.011	0.24	0.3	2.9	9	0.096	8.9	0.54	0.98	0.0038	1.3
WH-FS-01 @ 5' (40.441590 / -104.525140)	12/29/21	5	8.2	0.000852	0.00114	0.0005	0.000332	0.000588	0.000731	0.000667	0.000279	0.00136	<0.00067	0.0016	0.00191	0.000512	<0.00067	0.00193
COGCC = Colorado Oil and Gas Conservation Commission      PID = Photoionization Detector mg/kg = milligrams per kilogram      ppm-v = parts per million by volume      MDL - Minimum Detection Limit Note: Values presented with a less than symbol (<) did not contain concentrations at or above the laboratory MDL and/or reporting limit. Note: Values presented in <b>BOLD</b> contained concentrations exceeding COGCC Table 915-1 Regulatory Limits																		



## **ATTACHMENT A**

### **Photo Log**



# Hoffner #13-35 API # 05-123-22813 Remediation # 20260

Closure Assessment

December 2021

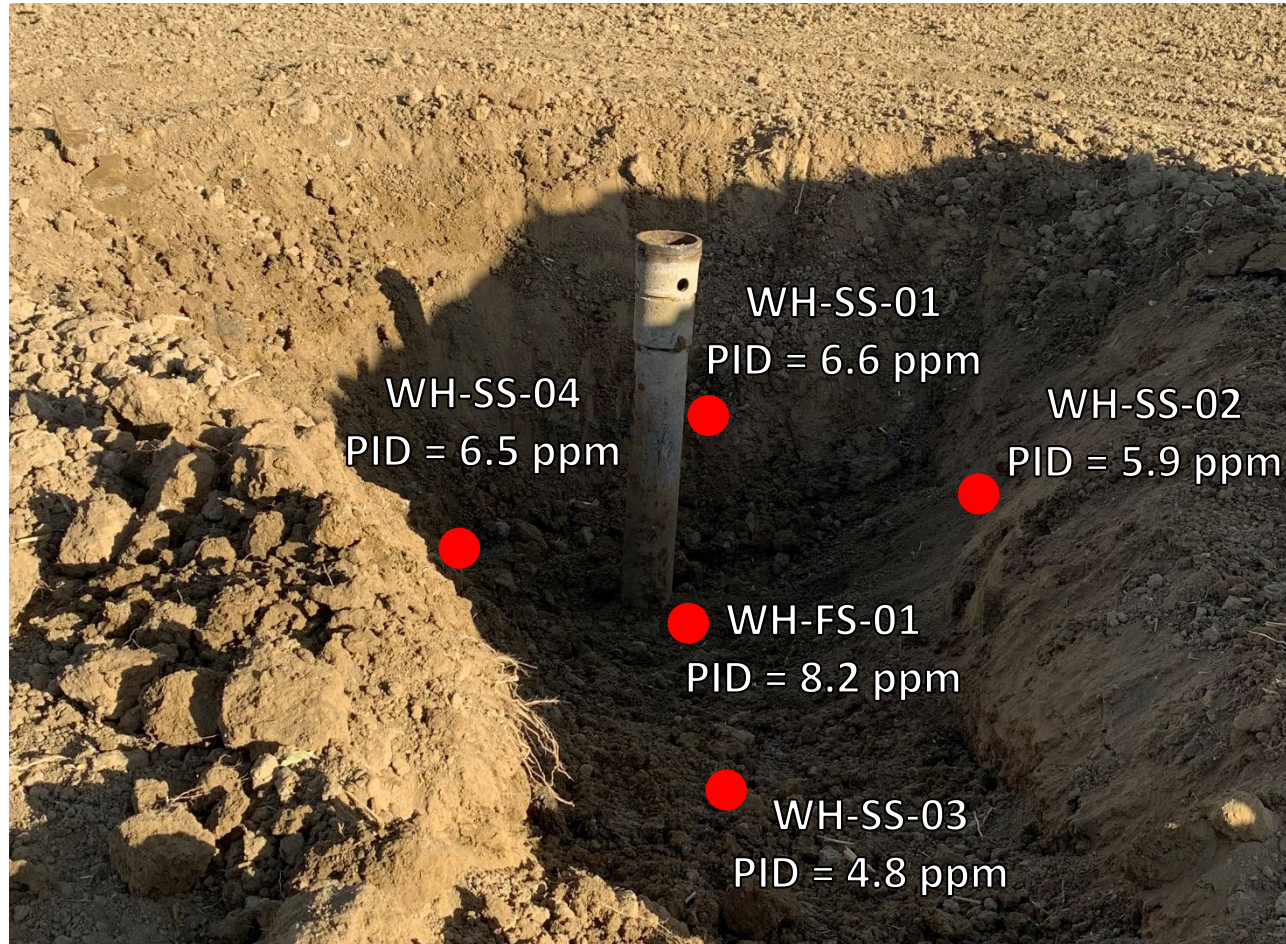


**EAGLE**  
ENVIRONMENTAL  
CONSULTING, INC.

8000 W 44th Ave, Wheat Ridge, CO 80033  
Ph: 303-433-0479 • F: 303-325-5449



# Wellhead Excavation – 12/29/21



Looking north-northeast

No petroleum hydrocarbon staining or odor observed



## **ATTACHMENT B**

### **Laboratory Analytical Report**





January 07, 2022

Eagle Environmental Consulting, Inc.

Martin C Eckert III

8000 W 44th Ave

Wheat Ridge CO 80033

**Project Name - Noble - Hoffner #13-35**

**Project Number - -**

Attached are your analytical results for Noble - Hoffner #13-35 received by Origins Laboratory, Inc. December 30, 2021. This project is associated with Origins project number Y112663-01.

The analytical results in the following report were analyzed under the guidelines of EPA Methods. These methods are identified as follows; "SW" are defined in SW-846, "EPA" are defined in 40CFR part 136 and "SM" are defined in the most current revision of Standard Methods For the Examination of Water and Wastewater.

The analytical results apply specifically to the samples and analyses specified per the attached Chain of Custody. As such, this report shall not be reproduced except in full, without the written approval of Origin's laboratory.

Unless otherwise noted, the analytical results for all soil samples are reported on a wet weight basis. All analytical analyses were performed under NELAP guidelines unless noted by a data qualifier.

Any holding time exceedances, deviations from the method specifications or deviations from Origins Laboratory's Standard Operating Procedures are outlined in the case narrative.

Thank you for selecting Origins for your analytical needs. Please contact us with any questions concerning this report, or if we can help with anything at all.

Origins Laboratory, Inc.  
303.433.1322  
o-squad@oelabinc.com



1725 Elk Place, Denver, CO 80211 | Phone: 303.433.1322 | Fax: 303.265.9645

Eagle Environmental Consulting, Inc.

8000 W 44th Ave

Wheat Ridge CO 80033

Martin C Eckert III

Project Number: -

Project: Noble - Hoffner #13-35

## CROSS REFERENCE REPORT

Sample ID	Laboratory ID	Matrix	Date Sampled	Date Received
WH-FS-01@5'	Y112663-01	Soil	December 29, 2021 14:28	12/30/2021 08:48

Origins Laboratory, Inc.



*The results in this report apply to the samples analyzed in accordance with the chain of custody document. This analytical report must be reproduced in its entirety.*





Eagle Environmental Consulting, Inc.  
8000 W 44th Ave  
Wheat Ridge CO 80033

Martin C Eckert III  
Project Number: -  
Project: Noble - Hoffner #13-35

Origins Laboratory

## Sample Receipt Checklist

F-012207-01-R1  
Effective Date: 01/09/12

Origins Work Order: 4112663

Client: Eagle

Client Project ID: Hoffner #13-35

Checklist Completed by: JH

Shipped Via: HO

(UPS, FedEx, Hand Delivered, Pick-up, etc.)

Date/time completed: 12/30/11

Airbill #: NO

Matrix(s) Received: (Check all that apply): Soil/Solid Water Other:

Cooler Number/Temperature: 1 12.5°C 1°C 1°C (Describe) °C

Thermometer ID: 1003

Requirement Description	Yes	No	N/A	Comments (if any)
If samples require cooling, was the temperature between 0°C to ≤ 6°C <sup>(1)</sup> ?	<u>—</u>			
Is there ice present (document if blue ice is used)	<u>—</u>			
Are custody seals present on cooler? (if so, document in comments if they are signed and dated, broken or intact)		<u>—</u>		
Are custody seals present on each sample container? (if so, document in comments if they are signed and dated, broken or intact)		<u>—</u>		
Were all samples received intact <sup>(1)</sup> ?	<u>—</u>			
Was adequate sample volume provided <sup>(1)</sup> ?	<u>—</u>			
Are short holding time analytes or samples with HTs due within 48 hours present <sup>(1)</sup> ?		<u>—</u>		
Is a chain-of-custody (COC) present and filled out completely <sup>(1)</sup> ?	<u>—</u>			
Does the COC agree with the number and type of sample bottles received <sup>(1)</sup> ?	<u>—</u>			
Do the sample IDs on the bottle labels match the COC <sup>(1)</sup> ?	<u>—</u>			
Is the COC properly relinquished by the client with date and time recorded <sup>(1)</sup> ?	<u>—</u>			
For volatiles in water – is there headspace (> ¼ inch bubble) present? If yes, contact client and note in narrative.			<u>—</u>	
Are samples preserved that require preservation and was it checked <sup>(1)</sup> ? (note ID of confirmation instrument used in comments) / (preservation is not confirmed for subcontracted analyses in order to insure sample integrity) (pH < 2 for samples preserved with HNO <sub>3</sub> , HCL, H <sub>2</sub> SO <sub>4</sub> ) / (pH > 10 for samples preserved with NaAsO <sub>2</sub> +NaOH, ZnAc+NaOH)			<u>—</u>	
Additional Comments (if any):				

<sup>(1)</sup> If NO, then contact the client before proceeding with analysis and note date/time and person contacted as well as the corrective action to in the additional comments (above) and the case narrative.

Reviewed by JH (Project Manager)

1/3/12  
Date/Time Reviewed

Origins Laboratory, Inc.

*Jordan A. Merrill*

The results in this report apply to the samples analyzed in accordance with the chain of custody document. This analytical report must be reproduced in its entirety.

Eagle Environmental Consulting, Inc.  
8000 W 44th Ave  
Wheat Ridge CO 80033

Martin C Eckert III  
Project Number: -  
Project: Noble - Hoffner #13-35

WH-FS-01@5'

12/29/2021 2:28:00PM

Analyte	Result	Reporting Limit	Units	Dilution	Batch	Analyst	Prepared	Analyzed	Notes
---------	--------	-----------------	-------	----------	-------	---------	----------	----------	-------

Origins Laboratory, Inc.  
Y112663-01 (Soil)

**Boron (DTPA Sorbitol)**

Boron	0.851	0.198	mg/L	1	B2A0305	CJM	01/03/2022	01/03/2022	
-------	-------	-------	------	---	---------	-----	------------	------------	--

**DRO/ORO by EPA 8015D**

Diesel (C10-C28)	51.4	25.0	mg/kg	1	B1L3006	EPC	12/30/2021	12/31/2021	
Residual Range Organics (C28-C40)	ND	100	"	"	"	EPC	"	"	U

Surrogate: o-Terphenyl	76.1 %	50-150			"	"	"	
------------------------	--------	--------	--	--	---	---	---	--

**GBTEX+TMBs by 8260D**

1,2,4-Trimethylbenzene	ND	0.00200	mg/kg	1	B1L3005	ZZZ	12/30/2021	01/02/2022	U
1,3,5-Trimethylbenzene	ND	0.00200	"	"	"	ZZZ	"	"	U
Benzene	ND	0.00200	"	"	"	ZZZ	"	"	U
Ethylbenzene	ND	0.00200	"	"	"	ZZZ	"	"	U
Toluene	ND	0.00200	"	"	"	ZZZ	"	"	U
Xylenes, total	ND	0.00200	"	"	"	ZZZ	"	"	U
Gasoline Range Hydrocarbons	ND	0.200	"	"	"	ZZZ	"	"	U

Surrogate: 1,2-Dichloroethane-d4	98.8 %	70-130			"	"	"	
Surrogate: Toluene-d8	96.5 %	70-130			"	"	"	
Surrogate: 4-Bromofluorobenzene	95.1 %	70-130			"	"	"	

**Metals by Saturated Paste by EPA 6010**

Origins Laboratory, Inc.



The results in this report apply to the samples analyzed in accordance with the chain of custody document. This analytical report must be reproduced in its entirety.

Eagle Environmental Consulting, Inc.  
8000 W 44th Ave  
Wheat Ridge CO 80033

Martin C Eckert III  
Project Number: -  
Project: Noble - Hoffner #13-35

WH-FS-01@5'

12/29/2021 2:28:00PM

Analyte	Result	Reporting Limit	Units	Dilution	Batch	Analyst	Prepared	Analyzed	Notes
---------	--------	-----------------	-------	----------	-------	---------	----------	----------	-------

**Origins Laboratory, Inc.**  
**Y112663-01 (Soil)**

**Metals by Saturated Paste by EPA 6010**

Calcium	25.9	0.499	meq/L	10	[CALC]	CJM	01/03/2022	01/04/2022	
Magnesium	14.8	0.823	"	"	"	CJM	"	"	
Sodium	5.11	0.435	"	"	"	CJM	"	"	

**PAH by 8270D SIM**

1-Methylnaphthalene	0.000852	0.00067	mg/Kg	1	L592919		01/04/2022	01/05/2022	
2-Methylnaphthalene	0.00114	0.00067	"	"	"		"	"	
Acenaphthene	0.0005	0.00067	"	"	"		"	"	J
Anthracene	0.000332	0.00067	"	"	"		"	"	J
Benzo(a)anthracene	0.000588	0.00067	"	"	"		"	"	J
Benzo(a)pyrene	0.000731	0.00067	"	"	"		"	"	
Benzo(b)fluoranthene	0.000667	0.00067	"	"	"		"	"	J
Benzo(k)fluoranthene	0.000279	0.00067	"	"	"		"	"	J
Chrysene	0.00136	0.00067	"	"	"		"	"	
Dibenz(a,h)anthracene	ND	0.00067	"	"	"		"	"	
Fluoranthene	0.0016	0.00067	"	"	"		"	"	
Fluorene	0.00191	0.00067	"	"	"		"	"	
Indeno(1,2,3-cd)pyrene	0.000512	0.00067	"	"	"		"	"	J
Naphthalene	ND	0.00067	"	"	"		"	"	
Pyrene	0.00193	0.00067	"	"	"		"	"	

Surrogate: 2-Fluorobiphenyl	59.5 %	33-115	"	"	"
Surrogate: 4-Terphenyl-d14	58.6 %	33-122	"	"	"

Origins Laboratory, Inc.



The results in this report apply to the samples analyzed in accordance with the chain of custody document. This analytical report must be reproduced in its entirety.



Eagle Environmental Consulting, Inc.  
8000 W 44th Ave  
Wheat Ridge CO 80033

Martin C Eckert III  
Project Number: -  
Project: Noble - Hoffner #13-35

WH-FS-01@5'

12/29/2021 2:28:00PM

Analyte	Result	Reporting Limit	Units	Dilution	Batch	Analyst	Prepared	Analyzed	Notes
---------	--------	-----------------	-------	----------	-------	---------	----------	----------	-------

**Waypoint Analytical, Inc.**  
Y112663-01 (Soil)

**PAH by 8270D SIM**

Surrogate: Nitrobenzene-d5	41.1 %	29-110			L5929 19	01/04/2022	01/05/2022
----------------------------	--------	--------	--	--	-------------	------------	------------

**pH in Soil by 9045D**

pH	7.75	pH Units	1	B2A0304	ACC	01/03/2022	01/04/2022
----	------	----------	---	---------	-----	------------	------------

**SAR by 20B Saturated Paste**

SAR	1.14	SAR	1	B2A0301	CJM	01/03/2022	01/04/2022
-----	------	-----	---	---------	-----	------------	------------

**Specific Conductance Mod. 9050A**

Specific Conductance (EC)	3.44	0.00500 mmhos/cm	1	B2A0303	ACC	01/03/2022	01/04/2022
---------------------------	------	------------------	---	---------	-----	------------	------------

Origins Laboratory, Inc.



The results in this report apply to the samples analyzed in accordance with the chain of custody document. This analytical report must be reproduced in its entirety.

Eagle Environmental Consulting, Inc.  
8000 W 44th Ave  
Wheat Ridge CO 80033

Martin C Eckert III  
Project Number: -  
Project: Noble - Hoffner #13-35

**Volatile Organic Compounds by GC/MS SW846 8260D - Quality Control**  
**Origins Laboratory, Inc.**

Analyte	Result	Reporting Limit	Units	Spike Level	Source Result	%REC	%REC Limits	RPD	RPD Limit	Notes
<b>Batch B1L3005 - EPA 5030 (soil)</b>										
<b>Blank (B1L3005-BLK1)</b>					Prepared: 12/30/2021 Analyzed: 01/02/2022					
1,2,4-Trimethylbenzene	ND	0.00200	mg/kg							U
Naphthalene	ND	0.0100	"							U
1,3,5-Trimethylbenzene	ND	0.00200	"							U
Benzene	ND	0.00200	"							U
Ethylbenzene	ND	0.00200	"							U
Toluene	ND	0.00200	"							U
Xylenes, total	ND	0.00200	"							U
Gasoline Range Hydrocarbons	ND	0.200	"							U
Surrogate: 1,2-Dichloroethane-d4	0.11		"	0.125		85.7	70-130			
Surrogate: Toluene-d8	0.12		"	0.125		95.6	70-130			
Surrogate: 4-Bromofluorobenzene	0.13		"	0.125		102	70-130			

Origins Laboratory, Inc.



The results in this report apply to the samples analyzed in accordance with the chain of custody document. This analytical report must be reproduced in its entirety.

Eagle Environmental Consulting, Inc.  
8000 W 44th Ave  
Wheat Ridge CO 80033

Martin C Eckert III  
Project Number: -  
Project: Noble - Hoffner #13-35

**Volatile Organic Compounds by GC/MS SW846 8260D - Quality Control**  
**Origins Laboratory, Inc.**

Analyte	Result	Reporting Limit	Units	Spike Level	Source Result	%REC	%REC Limits	RPD	RPD Limit	Notes
<b>Batch B1L3005 - EPA 5030 (soil)</b>										
<b>LCS (B1L3005-BS1)</b>					Prepared: 12/30/2021 Analyzed: 01/02/2022					
1,2,4-Trimethylbenzene	0.0847	0.00200	mg/kg	0.100		84.7	70-130			
Naphthalene	0.0752	0.0100	"	0.100		75.2	70-130			
1,3,5-Trimethylbenzene	0.0856	0.00200	"	0.100		85.6	70-130			
Benzene	0.0869	0.00200	"	0.100		86.9	70-130			
Ethylbenzene	0.0852	0.00200	"	0.100		85.2	70-130			
m,p-Xylene	0.168	0.00400	"	0.200		84.0	70-130			
o-Xylene	0.0847	0.00200	"	0.100		84.7	70-130			
Toluene	0.0874	0.00200	"	0.100		87.4	70-130			
Surrogate: 1,2-Dichloroethane-d4	0.11		"	0.125		84.1	70-130			
Surrogate: Toluene-d8	0.12		"	0.125		95.0	70-130			
Surrogate: 4-Bromofluorobenzene	0.13		"	0.125		100	70-130			

Origins Laboratory, Inc.



*The results in this report apply to the samples analyzed in accordance with the chain of custody document. This analytical report must be reproduced in its entirety.*

Eagle Environmental Consulting, Inc.  
8000 W 44th Ave  
Wheat Ridge CO 80033

Martin C Eckert III  
Project Number: -  
Project: Noble - Hoffner #13-35

**Volatile Organic Compounds by GC/MS SW846 8260D - Quality Control**  
**Origins Laboratory, Inc.**

Analyte	Result	Reporting Limit	Units	Spike Level	Source Result	%REC	%REC Limits	RPD	RPD Limit	Notes
<b>Batch B1L3005 - EPA 5030 (soil)</b>										
<b>Matrix Spike (B1L3005-MS1)</b>		<b>Source: Y112612-01</b>			Prepared: 12/30/2021 Analyzed: 01/02/2022					
1,2,4-Trimethylbenzene	0.0903	0.00200	mg/kg	0.100	0.000860	89.5	70-130			
Naphthalene	0.0847	0.0100	"	0.100	0.00152	83.2	70-130			
1,3,5-Trimethylbenzene	0.0888	0.00200	"	0.100	0.000800	88.0	70-130			
Benzene	0.0845	0.00200	"	0.100	0.000660	83.8	70-130			
Ethylbenzene	0.0828	0.00200	"	0.100	0.000700	82.1	70-130			
m,p-Xylene	0.167	0.00400	"	0.200	0.00166	82.8	70-130			
o-Xylene	0.0865	0.00200	"	0.100	0.000820	85.7	70-130			
Toluene	0.0853	0.00200	"	0.100	ND	85.3	70-130			
Surrogate: 1,2-Dichloroethane-d4	0.11		"	0.125		84.4	70-130			
Surrogate: Toluene-d8	0.12		"	0.125		96.4	70-130			
Surrogate: 4-Bromofluorobenzene	0.13		"	0.125		101	70-130			

Origins Laboratory, Inc.



The results in this report apply to the samples analyzed in accordance with the chain of custody document. This analytical report must be reproduced in its entirety.



Eagle Environmental Consulting, Inc.  
8000 W 44th Ave  
Wheat Ridge CO 80033

Martin C Eckert III  
Project Number: -  
Project: Noble - Hoffner #13-35

**Volatile Organic Compounds by GC/MS SW846 8260D - Quality Control**  
**Origins Laboratory, Inc.**

Analyte	Result	Reporting Limit	Units	Spike Level	Source Result	%REC	%REC Limits	RPD	RPD Limit	Notes
<b>Batch B1L3005 - EPA 5030 (soil)</b>										
<b>Matrix Spike Dup (B1L3005-MSD1)</b>		<b>Source: Y112612-01</b>		Prepared: 12/30/2021 Analyzed: 01/02/2022						
1,2,4-Trimethylbenzene	0.0947	0.00200	mg/kg	0.100	0.000860	93.9	70-130	4.78	20	
Naphthalene	0.0908	0.0100	"	0.100	0.00152	89.3	70-130	7.00	20	
1,3,5-Trimethylbenzene	0.0942	0.00200	"	0.100	0.000800	93.4	70-130	5.90	20	
Benzene	0.0902	0.00200	"	0.100	0.000660	89.6	70-130	6.59	20	
Ethylbenzene	0.0868	0.00200	"	0.100	0.000700	86.1	70-130	4.72	20	
m,p-Xylene	0.176	0.00400	"	0.200	0.00166	87.3	70-130	5.17	20	
o-Xylene	0.0914	0.00200	"	0.100	0.000820	90.6	70-130	5.48	20	
Toluene	0.0910	0.00200	"	0.100	ND	91.0	70-130	6.42	20	
Surrogate: 1,2-Dichloroethane-d4	0.10		"	0.125		82.6	70-130			
Surrogate: Toluene-d8	0.12		"	0.125		95.9	70-130			
Surrogate: 4-Bromofluorobenzene	0.12		"	0.125		99.1	70-130			

Origins Laboratory, Inc.



*The results in this report apply to the samples analyzed in accordance with the chain of custody document. This analytical report must be reproduced in its entirety.*

Jordan A. Merrill, Project Manager

Eagle Environmental Consulting, Inc.  
8000 W 44th Ave  
Wheat Ridge CO 80033

Martin C Eckert III  
Project Number: -  
Project: Noble - Hoffner #13-35

**Volatile Organic Compounds by GC/MS SW846 8260D - Quality Control**  
**Origins Laboratory, Inc.**

Analyte	Result	Reporting Limit	Units	Spike Level	Source Result	%REC	%REC Limits	RPD	RPD Limit	Notes
<b>Batch B1L3006 - EPA 3550B</b>										
<b>Blank (B1L3006-BLK1)</b>					Prepared: 12/30/2021 Analyzed: 12/31/2021					
Diesel (C10-C28)	ND	25.0	mg/kg							U
Residual Range Organics (C28-C40)	ND	100	"							U
Surrogate: o-Terphenyl	19		"	24.9		76.1	50-150			

Origins Laboratory, Inc.



*The results in this report apply to the samples analyzed in accordance with the chain of custody document. This analytical report must be reproduced in its entirety.*

Eagle Environmental Consulting, Inc.

8000 W 44th Ave

Wheat Ridge CO 80033

Martin C Eckert III

Project Number: -

Project: Noble - Hoffner #13-35

## Extractable Petroleum Hydrocarbons by 8015D - Quality Control

Origins Laboratory, Inc.

Analyte	Result	Reporting Limit	Units	Spike Level	Source Result	%REC	%REC Limits	RPD	RPD Limit	Notes
---------	--------	-----------------	-------	-------------	---------------	------	-------------	-----	-----------	-------

Batch B1L3006 - EPA 3550B

### LCS (B1L3006-BS1)

Prepared: 12/30/2021 Analyzed: 12/31/2021

Diesel (C10-C28)	809	50.0	mg/kg	1000		80.9	70-130			
Residual Range Organics (C28-C40)	830	200	"	1000		83.0	70-130			
Surrogate: o-Terphenyl	43		"	49.8		86.5	50-150			

Origins Laboratory, Inc.



The results in this report apply to the samples analyzed in accordance with the chain of custody document. This analytical report must be reproduced in its entirety.

Jordan A. Merrill, Project Manager

Eagle Environmental Consulting, Inc.

8000 W 44th Ave

Wheat Ridge CO 80033

Martin C Eckert III

Project Number: -

Project: Noble - Hoffner #13-35

## Extractable Petroleum Hydrocarbons by 8015D - Quality Control

Origins Laboratory, Inc.

Analyte	Result	Reporting Limit	Units	Spike Level	Source Result	%REC	%REC Limits	RPD	RPD Limit	Notes
---------	--------	-----------------	-------	-------------	---------------	------	-------------	-----	-----------	-------

### Batch B1L3006 - EPA 3550B

Matrix Spike (B1L3006-MS1)		Source: Y112626-01			Prepared: 12/30/2021 Analyzed: 12/31/2021					
Diesel (C10-C28)	731	50.0	mg/kg	1000	ND	73.1	70-130			
Residual Range Organics (C28-C40)	722	200	"	1000	ND	72.2	70-130			
Surrogate: o-Terphenyl	33		"	49.8		66.7	50-150			

Origins Laboratory, Inc.



The results in this report apply to the samples analyzed in accordance with the chain of custody document. This analytical report must be reproduced in its entirety.

Jordan A. Merrill, Project Manager



Eagle Environmental Consulting, Inc.

8000 W 44th Ave

Wheat Ridge CO 80033

Martin C Eckert III

Project Number: -

Project: Noble - Hoffner #13-35

## Extractable Petroleum Hydrocarbons by 8015D - Quality Control

Origins Laboratory, Inc.

Analyte	Result	Reporting Limit	Units	Spike Level	Source Result	%REC	%REC Limits	RPD	RPD Limit	Notes
---------	--------	-----------------	-------	-------------	---------------	------	-------------	-----	-----------	-------

### Batch B1L3006 - EPA 3550B

Matrix Spike Dup (B1L3006-MSD1)		Source: Y112626-01			Prepared: 12/30/2021 Analyzed: 12/31/2021					
Diesel (C10-C28)	755	50.0	mg/kg	1000	ND	75.5	70-130	3.35	35	
Residual Range Organics (C28-C40)	739	200	"	1000	ND	73.9	70-130	2.24	35	
Surrogate: o-Terphenyl	35		"	49.8		69.5	50-150			

Origins Laboratory, Inc.



The results in this report apply to the samples analyzed in accordance with the chain of custody document. This analytical report must be reproduced in its entirety.

Jordan A. Merrill, Project Manager

Eagle Environmental Consulting, Inc.  
8000 W 44th Ave  
Wheat Ridge CO 80033

Martin C Eckert III  
Project Number: -  
Project: Noble - Hoffner #13-35

## Extractable Petroleum Hydrocarbons by 8015D - Quality Control

### Origins Laboratory, Inc.

Analyte	Result	Reporting Limit	Units	Spike Level	Source Result	%REC	%REC Limits	RPD	RPD Limit	Notes
---------	--------	-----------------	-------	-------------	---------------	------	-------------	-----	-----------	-------

## Saturated Paste - Quality Control

### Origins Laboratory, Inc.

Analyte	Result	Reporting Limit	Units	Spike Level	Source Result	%REC	%REC Limits	RPD	RPD Limit	Notes
---------	--------	-----------------	-------	-------------	---------------	------	-------------	-----	-----------	-------

#### Batch B2A0303 - NO PREP

##### Blank (B2A0303-BLK1)

Prepared: 01/03/2022 Analyzed: 01/04/2022

Specific Conductance (EC) 0.000900 0.00500 mmhos/cm

##### Duplicate (B2A0303-DUP1)

Source: Y112660-01

Prepared: 01/03/2022 Analyzed: 01/04/2022

Specific Conductance (EC) 0.786 0.00500 mmhos/cm 0.759 3.49 25

#### Batch B2A0304 - NO PREP

##### Duplicate (B2A0304-DUP1)

Source: Y112660-01

Prepared: 01/03/2022 Analyzed: 01/04/2022

pH 7.64 pH Units 8.39 9.36 25

Origins Laboratory, Inc.



The results in this report apply to the samples analyzed in accordance with the chain of custody document. This analytical report must be reproduced in its entirety.

Eagle Environmental Consulting, Inc.  
8000 W 44th Ave  
Wheat Ridge CO 80033

Martin C Eckert III  
Project Number: -  
Project: Noble - Hoffner #13-35

**PAH by 8270D SIM - Quality Control**  
**Waypoint Analytical, Inc.**

Analyte	Result	Reporting Limit	Units	Spike Level	Source Result	%REC	%REC Limits	RPD	RPD Limit	Notes
---------	--------	-----------------	-------	-------------	---------------	------	-------------	-----	-----------	-------

**Batch L592919 - 3550B**

MSD (L 97048-MSD-L592919)		Source: 97048			Prepared: 01/04/2022 Analyzed: 01/05/2022					
Benzo(b)fluoranthene	0.102	0.00021	mg/Kg	0.166	0.00106	60.8	30-130	3.6	30	
Benzo(k)fluoranthene	0.111	0.00013	"	0.166	0.000589	66.8	30-130	9.4	30	
Benzo(a)pyrene	0.138	0.00024	"	0.166	0.00159	82.1	30-130	4.4	30	
Benzo(a)anthracene	0.127	0.00041	"	0.166	0.000442	76.5	30-130	0.7	30	
Chrysene	0.132	0.00027	"	0.166	0.00177	78.4	30-130	2.2	30	
Dibenz(a,h)anthracene	0.159	0.00036	"	0.166	0.000675	95.3	30-130	14.1	30	
Fluoranthene	0.136	0.00039	"	0.166	0.00093	81.3	30-130	1.4	30	
Fluorene	0.128	0.00029	"	0.166	<0.000290	77.1	30-130	0	30	
Indeno(1,2,3-cd)pyrene	0.14	0.00029	"	0.166	0.00139	83.5	30-130	14.5	30	
Naphthalene	0.106	0.000467	"	0.166	<0.000467	63.8	30-130	0	30	
Pyrene	0.125	0.00059	"	0.166	0.00156	74.3	30-130	1.6	30	
Acenaphthene	0.118	0.0003	"	0.166	<0.000300	71	30-130	0	30	
Anthracene	0.123	0.00033	"	0.166	<0.000330	74	30-130	2.4	30	
1-Methylnaphthalene	0.117	0.00033	"	0.166	<0.000330	70.4	30-130	1.7	30	
2-Methylnaphthalene	0.117	0.00039	"	0.166	<0.000390	70.4	30-130	0	30	
Surrogate: Nitrobenzene-d5	43.6		"	0.332	140	43.6	29-110			
Surrogate: 4-Terphenyl-d14	65.3		"	0.332	207	65.3	33-122			
Surrogate: 2-Fluorobiphenyl	61.4		"	0.332	194	61.4	33-115			

MS (L 97048-MS-L592919)		Source: 97048			Prepared: 01/04/2022 Analyzed: 01/05/2022					
Naphthalene	0.106	0.000467	mg/Kg	0.164	<0.000467	64.6	30-130			
Fluorene	0.128	0.00029	"	0.164	<0.000290	78	30-130			
Indeno(1,2,3-cd)pyrene	0.121	0.00029	"	0.164	0.00139	72.9	30-130			
Benzo(a)pyrene	0.132	0.00024	"	0.164	0.00159	79.5	30-130			
Acenaphthene	0.118	0.0003	"	0.164	<0.000300	71.9	30-130			
Fluoranthene	0.134	0.00039	"	0.164	0.00093	81.1	30-130			
Pyrene	0.123	0.00059	"	0.164	0.00156	74	30-130			

Origins Laboratory, Inc.



The results in this report apply to the samples analyzed in accordance with the chain of custody document. This analytical report must be reproduced in its entirety.

Eagle Environmental Consulting, Inc.  
8000 W 44th Ave  
Wheat Ridge CO 80033

Martin C Eckert III  
Project Number: -  
Project: Noble - Hoffner #13-35

**PAH by 8270D SIM - Quality Control**  
**Waypoint Analytical, Inc.**

Analyte	Result	Reporting Limit	Units	Spike Level	Source Result	%REC	%REC Limits	RPD	RPD Limit	Notes
---------	--------	-----------------	-------	-------------	---------------	------	-------------	-----	-----------	-------

**Batch L592919 - 3550B**

MS (L 97048-MS-L592919)		Source: 97048			Prepared: 01/04/2022 Analyzed: 01/05/2022					
Anthracene	0.12	0.00033	mg/Kg	0.164	<0.000330	73.1	30-130			
2-Methylnaphthalene	0.117	0.00039	"	0.164	<0.000390	71.3	30-130			
1-Methylnaphthalene	0.115	0.00033	"	0.164	<0.000330	70.1	30-130			
Benzo(b)fluoranthene	0.0983	0.00021	"	0.164	0.00106	59.2	30-130			
Benzo(k)fluoranthene	0.101	0.00013	"	0.164	0.000589	61.5	30-130			
Chrysene	0.129	0.00027	"	0.164	0.00177	77.5	30-130			
Dibenz(a,h)anthracene	0.138	0.00036	"	0.164	0.000675	83.7	30-130			
Benzo(a)anthracene	0.126	0.00041	"	0.164	0.000442	76.8	30-130			
Surrogate: Nitrobenzene-d5	43.7		"	0.329	140	43.7	29-110			
Surrogate: 4-Terphenyl-d14	65.3		"	0.329	207	65.3	33-122			
Surrogate: 2-Fluorobiphenyl	60.7		"	0.329	194	60.7	33-115			

LCS (LCS-L592919)		Prepared: 01/04/2022 Analyzed: 01/05/2022								
Fluoranthene	0.13	0.00039	mg/Kg	0.167		77.8	30-130			
Chrysene	0.127	0.00027	"	0.167		76	30-130			
Pyrene	0.118	0.00059	"	0.167		70.6	30-130			
Naphthalene	0.0995	0.000467	"	0.167		59.5	30-130			
Fluorene	0.125	0.00029	"	0.167		74.8	30-130			
Dibenz(a,h)anthracene	0.0651	0.00036	"	0.167		38.9	30-130			
Indeno(1,2,3-cd)pyrene	0.0953	0.00029	"	0.167		57	30-130			
Benzo(k)fluoranthene	0.101	0.00013	"	0.167		60.4	30-130			
1-Methylnaphthalene	0.108	0.00033	"	0.167		64.6	30-130			
2-Methylnaphthalene	0.107	0.00039	"	0.167		64	30-130			
Acenaphthene	0.115	0.0003	"	0.167		68.8	30-130			
Anthracene	0.121	0.00033	"	0.167		72.4	30-130			
Benzo(a)anthracene	0.121	0.00041	"	0.167		72.4	30-130			
Benzo(a)pyrene	0.128	0.00024	"	0.167		76.6	30-130			

Origins Laboratory, Inc.



The results in this report apply to the samples analyzed in accordance with the chain of custody document. This analytical report must be reproduced in its entirety.



Eagle Environmental Consulting, Inc.  
8000 W 44th Ave  
Wheat Ridge CO 80033

Martin C Eckert III  
Project Number: -  
Project: Noble - Hoffner #13-35

**PAH by 8270D SIM - Quality Control**  
**Waypoint Analytical, Inc.**

Analyte	Result	Reporting Limit	Units	Spike Level	Source Result	%REC	%REC Limits	RPD	RPD Limit	Notes
<b>Batch L592919 - 3550B</b>										
<b>LCS (LCS-L592919)</b>					Prepared: 01/04/2022 Analyzed: 01/05/2022					
Benzo(b)fluoranthene	0.1	0.00021	mg/Kg	0.167		59.8	30-130			
Surrogate: Nitrobenzene-d5	42		"	0.333		42	29-110			
Surrogate: 2-Fluorobiphenyl	55.8		"	0.333		55.8	33-115			
Surrogate: 4-Terphenyl-d14	61.5		"	0.333		61.5	33-122			
<b>LRB (LRB-L592919)</b>					Prepared: 01/04/2022 Analyzed: 01/05/2022					
Acenaphthene	ND	0.00067	mg/Kg				-			
Dibenz(a,h)anthracene	ND	0.00067	"				-			
Naphthalene	ND	0.00067	"				-			
Indeno(1,2,3-cd)pyrene	ND	0.00067	"				-			
Fluorene	ND	0.00067	"				-			
Fluoranthene	ND	0.00067	"				-			
Pyrene	ND	0.00067	"				-			
Chrysene	ND	0.00067	"				-			
Benzo(k)fluoranthene	ND	0.00067	"				-			
Benzo(b)fluoranthene	ND	0.00067	"				-			
Benzo(a)pyrene	ND	0.00067	"				-			
Anthracene	ND	0.00067	"				-			
2-Methylnaphthalene	ND	0.00067	"				-			
1-Methylnaphthalene	ND	0.00067	"				-			
Benzo(a)anthracene	ND	0.00067	"				-			
Surrogate: Nitrobenzene-d5	40.5		"	0.333		40.5	29-110			
Surrogate: 4-Terphenyl-d14	66.3		"	0.333		66.3	33-122			
Surrogate: 2-Fluorobiphenyl	57.3		"	0.333		57.3	33-115			

Origins Laboratory, Inc.



The results in this report apply to the samples analyzed in accordance with the chain of custody document. This analytical report must be reproduced in its entirety.

Eagle Environmental Consulting, Inc.

8000 W 44th Ave

Wheat Ridge CO 80033

Martin C Eckert III

Project Number: -

Project: Noble - Hoffner #13-35

### Notes and Definitions

U Sample is Non-Detect.

J Estimated Value. Analyte below reported quantitation limit.

ND Analyte NOT DETECTED at or above the reporting limit

RPD Relative Percent Difference

All soil results are reported at a wet weight basis.

Origins Laboratory, Inc.



*The results in this report apply to the samples analyzed in accordance with the chain of custody document. This analytical report must be reproduced in its entirety.*