

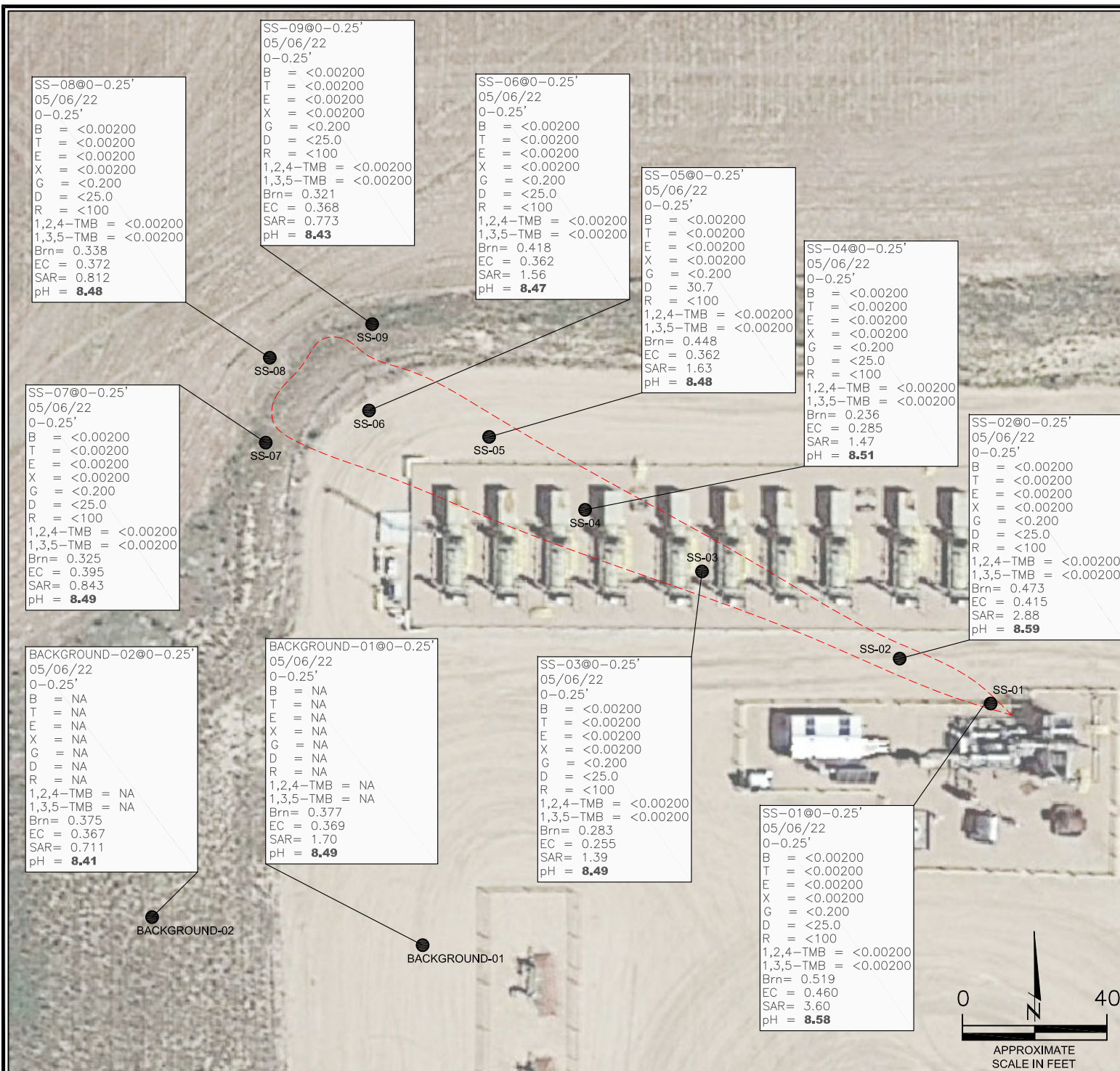


FIGURES

Figure 1: Soil Analytical Map

Figure 2: Polycyclic Aromatic Hydrocarbons Map

Figure 3: Metals in Soil Map



LEGEND

--- APPROXIMATE ASSESSMENT BOUNDARIES

● APPROXIMATE LOCATION OF SOIL SAMPLES SUBMITTED FOR LABORATORY ANALYSIS

PARAMETERS

SAMPLE LOCATION
DATE
DEPTH (FEET)
B = BENZENE (mg/kg)
T = TOLUENE (mg/kg)
E = ETHYLBENZENE (mg/kg)
X = TOTAL XYLENES (mg/kg)
G = TPH-GRO (mg/kg)
D = TPH-DRO (mg/kg)
R = TPH-RRO (mg/kg)
1,2,4-TMB = 1,2,4 TRIMETHYLBENZENE (mg/kg)
1,3,5-TMB = 1,3,5 TRIMETHYLBENZENE (mg/kg)
Brn= BORON (mg/L)
EC = SPECIFIC CONDUCTANCE (mmhos/cm)
SAR= SODIUM ADSORPTION RATIO
pH = pH (pH UNITS)

mg/kg = MILLIGRAMS PER KILOGRAM
mg/L = MILLIGRAMS PER LITER
mmhos/cm = MILLIMHOS PER CENTIMETER

NA – NOT ANALYZED


TPH-GRO = TOTAL PETROLEUM HYDROCARBONS – GASOLINE RANGE ORGANICS
TPH-DRO = TOTAL PETROLEUM HYDROCARBONS – DIESEL RANGE ORGANICS
TPH-RRO = TOTAL PETROLEUM HYDROCARBONS – RESIDUAL RANGE ORGANICS

NOTES:
VALUES PRESENTED WITH A LESS THAN SYMBOL (<) DID NOT CONTAIN CONCENTRATIONS AT OR ABOVE LABORATORY DETECTION LIMITS

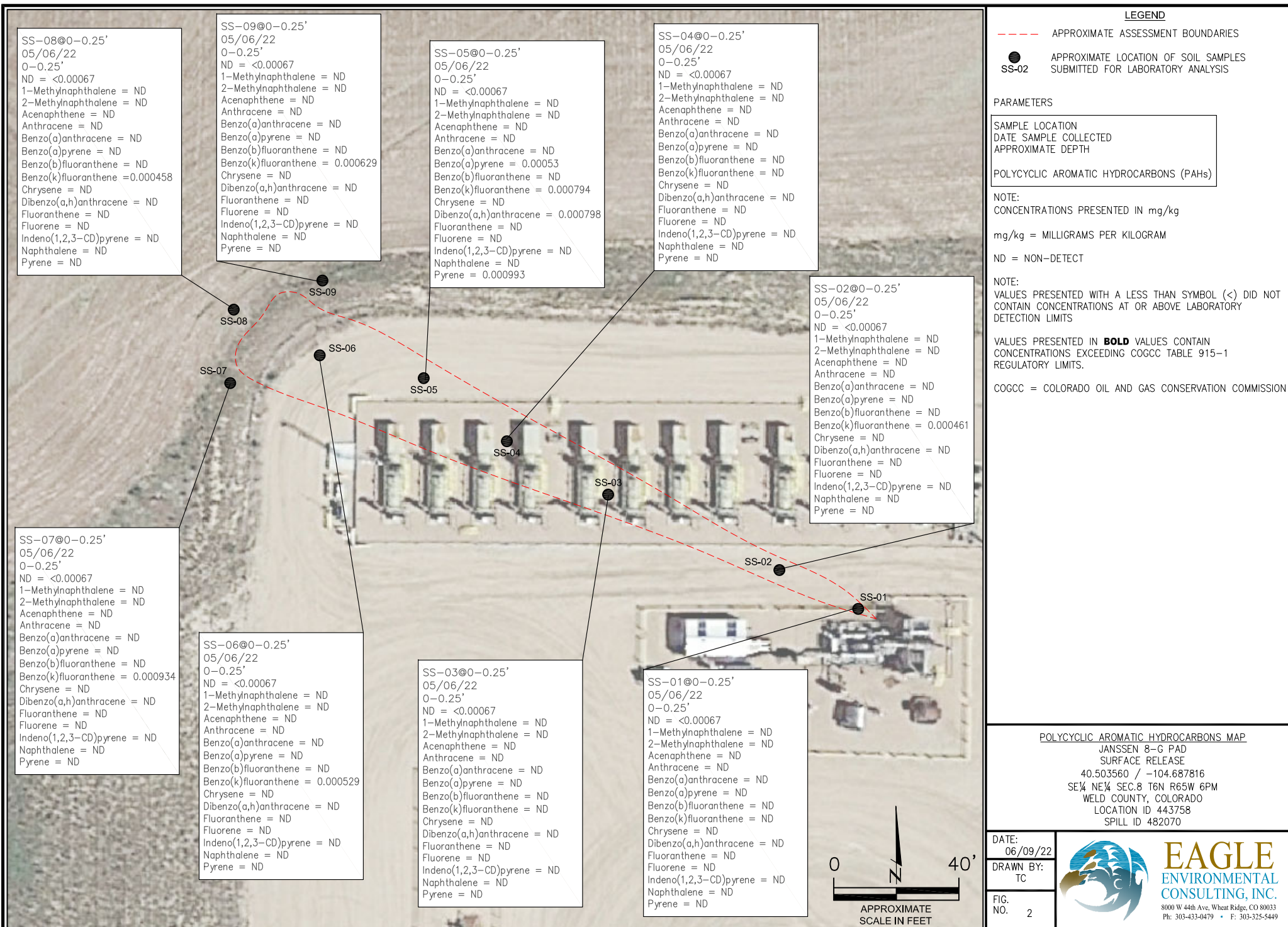
VALUES PRESENTED IN **BOLD** VALUES CONTAIN CONCENTRATIONS THAT EXCEED COGCC TABLE 915-1 REGULATORY LIMITS FOR THAT COMPOUND.

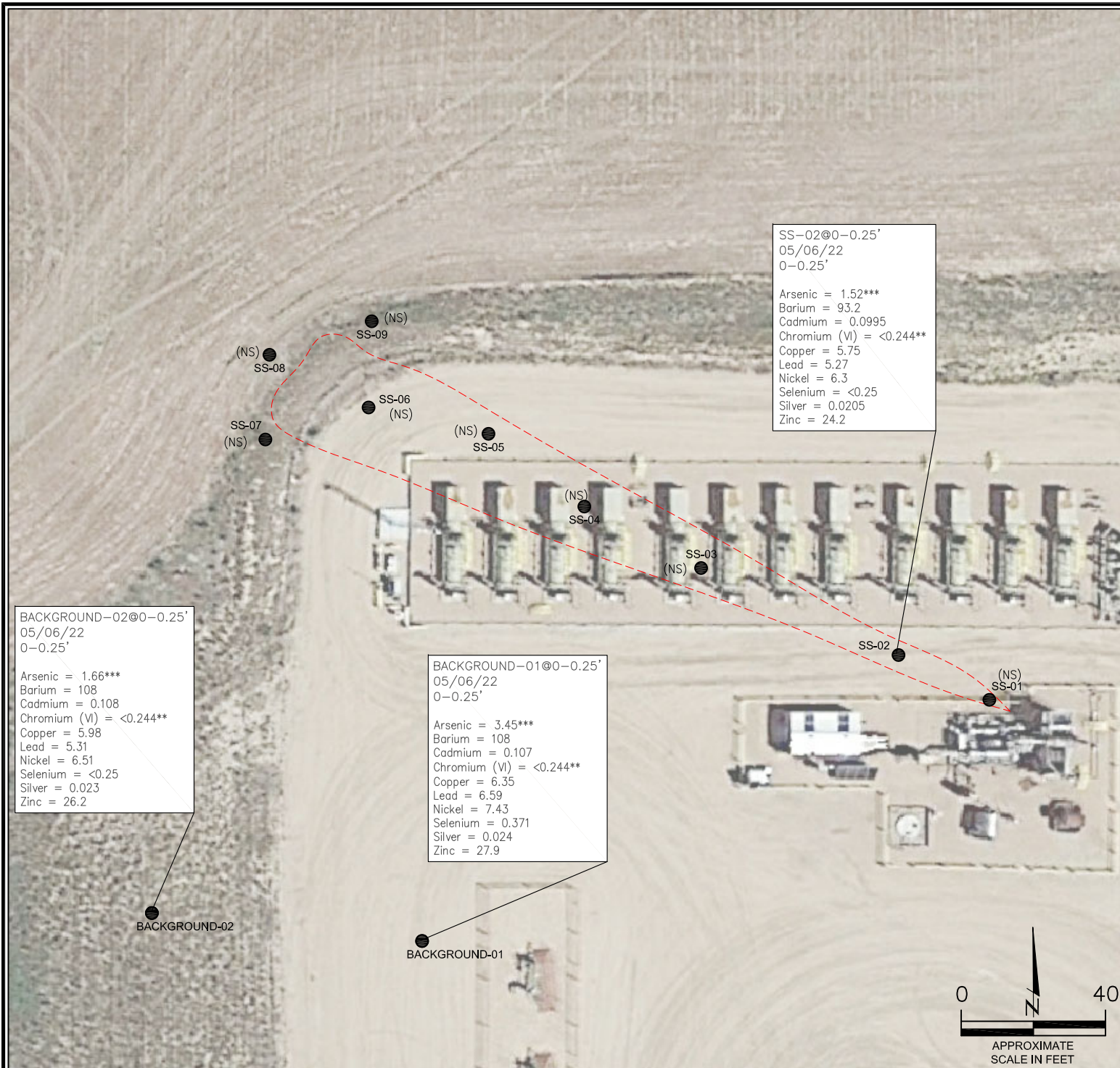
COGCC = COLORADO OIL AND GAS CONSERVATION COMMISSION

SOIL ANALYTICAL MAP
JANSSEN 8-G PAD
SURFACE RELEASE
40.503560 / -104.687816
SE¼ NE¼ SEC.8 T6N R65W 6PM
WELD COUNTY, COLORADO
LOCATION ID 443758
SPILL ID 482070

DATE: 06/09/22	
DRAWN BY: TC	
FIG. NO. 1	

EAGLE
ENVIRONMENTAL
CONSULTING, INC.
8000 W 44th Ave, Wheat Ridge, CO 80033
Ph: 303-433-0479 • F: 303-325-5449





LEGEND

- APPROXIMATE ASSESSMENT BOUNDARIES
- APPROXIMATE LOCATION OF SOIL SAMPLES
SUBMITTED FOR LABORATORY ANALYSIS

PARAMETERS

SAMPLE LOCATION
DATE SAMPLE COLLECTED
APPROXIMATE DEPTH
Arsenic = (mg/kg)
Barium = (mg/kg)
Cadmium = (mg/kg)
Chromium (VI) = (mg/kg)
Copper = (mg/kg)
Lead = (mg/kg)
Nickel = (mg/kg)
Selenium = (mg/kg)
Silver = (mg/kg)
Zinc = (mg/kg)

mg/kg = MILLIGRAMS PER KILOGRAM

NA – NOT ANALYZED

(NS) – NOT SAMPLED

NOTE:

VALUES PRESENTED WITH A LESS THAN SYMBOL (<) DID NOT CONTAIN CONCENTRATIONS AT/OR ABOVE LABORATORY REPORTING LIMITS AND/OR MINIMUM DETECTION LIMITS.

VALUES PRESENTED IN **BOLD** VALUES CONTAIN CONCENTRATIONS EXCEEDING COGCC TABLE 915-1 VALUES

*VALUES EXCEED COGCC TABLE 915-1 "PROTECTION OF GROUNDWATER SOIL SCREENING LEVELS" FOR THAT COMPOUND.

**ACHIEVABLE PRACTICAL QUANTITATIVE LIMITS FOR HEXAVALENT CHROMIUM (Cr VI) IN SOILS IS IN THE RANGE OF 0.1 TO 1 mg/kg.

***ARSENIC IS NATURALLY OCCURRING IN COLORADO. LOCAL "CLEAN-UP LEVEL" (3.2 mg/kg) is 1.25*BACKGROUND AVERAGE (2.56 mg/kg).

COGCC = COLORADO OIL AND GAS CONSERVATION COMMISSION

METALS IN SOIL MAP
JANSSEN 8-G PAD
SURFACE RELEASE
40.503560 / -104.687816
SE¼ NE¼ SEC.8 T6N R65W 6PM
WELD COUNTY, COLORADO
LOCATION ID 443758
SPILL ID 482070

DATE:
06/09/22

DRAWN BY:
TC

FIG.
NO. 3



EAGLE
ENVIRONMENTAL
CONSULTING, INC.
8000 W 44th Ave, Wheat Ridge, CO 80033
Ph: 303-433-0479 • F: 303-325-5449



TABLES

Table 1: Photoionization Detector Reading Summary

Table 2: Soil Analytical Results Summary

Table 3: Polycyclic Aromatic Hydrocarbons Analytical Results Summary

Table 4: Metals Analytical Results Summary

TABLE 1
 PHOTOIONIZATION DETECTOR READING SUMMARY
 JANSSEN 8-G PAD
 SURFACE RELEASE
 40.503560 / -104.687816
 SE1/4 NE1/4 SEC.8 T6N R65W 6PM
 WELD COUNTY, COLORADO
 LOCATION ID 443758
 SPILL ID 482070

Sample Location (Latitude/Longitude)	Date	Approximate Depth (feet)	PID Reading (ppm-v)	Lab Submission (Y/N)
SS-01 @ 0-0.25' (40.503612 / -104.687920)	05/06/22	0-0.25	10.4	Y
SS-02 @ 0-0.25' (40.503638 / -104.687994)	05/06/22	0-0.25	10.8	Y
SS-03 @ 0-0.25' (40.50366 / -104.688124)	05/06/22	0-0.25	9.8	Y
SS-04 @ 0-0.25' (40.503729 / -104.688241)	05/06/22	0-0.25	9.3	Y
SS-05 @ 0-0.25' (40.503775 / -104.688333)	05/06/22	0-0.25	6.1	Y
SS-06 @ 0-0.25' (40.503798 / -104.688456)	05/06/22	0-0.25	6.5	Y
SS-07 @ 0-0.25' (40.503753 / -104.688567)	05/06/22	0-0.25	3.8	Y
SS-08 @ 0-0.25' (40.503861 / -104.688542)	05/06/22	0-0.25	4.2	Y
SS-09 @ 0-0.25' (40.503902 / -104.688416)	05/06/22	0-0.25	3.7	Y
Background-01 @ 0-0.25' (40.503408 / -104.688391)	05/06/22	0-0.25	5.6	Y
Background-02 @ 0-0.25' (40.503430 / -104.688654)	05/06/22	0-0.25	3.4	Y
(Y/N) = Yes or No ppm-v = parts per million by volume PID = Photoionization Detector				

TABLE 2
SOIL ANALYTICAL RESULTS SUMMARY
JANSSEN 8-G PAD
SURFACE RELEASE
40.503560 / -104.687816
SE1/4 NE1/4 SEC.8 T6N R65W 6PM
WELD COUNTY, COLORADO
LOCATION ID 443758
SPILL ID 482070

Sample Location (Latitude/Longitude)	Date	Approximate Depth (feet)	PID Reading (ppm-v)	Benzene (mg/kg)	Toluene (mg/kg)	Ethylbenzene (mg/kg)	Total Xylenes (mg/kg)	TPH-GRO (mg/kg)	TPH-DRO (mg/kg)	TPH-RRO (mg/kg)	1,2,4-TMB (mg/kg)	1,3,5-TMB (mg/kg)	Boron (mg/L)	Specific Conductance (mmhos/cm)	pH (pH units)	SAR
COGCC Table 915-1 Residential Screening Levels (mg/kg)				1.20	490	5.8	58	500			30	27	2	<4	6-8.3	<6
SS-01 @ 0-0.25' (40.503612 / -104.687920)	05/06/22	0-0.25	10.4	<0.00200	<0.00200	<0.00200	<0.00200	<0.200	<25.0	<100	<0.00200	<0.00200	0.519	0.460	8.58	3.60
SS-02 @ 0-0.25' (40.503638 / -104.687994)	05/06/22	0-0.25	10.8	<0.00200	<0.00200	<0.00200	<0.00200	<0.200	<25.0	<100	<0.00200	<0.00200	0.473	0.415	8.59	2.88
SS-03 @ 0-0.25' (40.50366 / -104.688124)	05/06/22	0-0.25	9.8	<0.00200	<0.00200	<0.00200	<0.00200	<0.200	<25.0	<100	<0.00200	<0.00200	0.283	0.255	8.49	1.39
SS-04 @ 0-0.25' (40.503729 / -104.688241)	05/06/22	0-0.25	9.3	<0.00200	<0.00200	<0.00200	<0.00200	<0.200	<25.0	<100	<0.00200	<0.00200	0.236	0.285	8.51	1.47
SS-05 @ 0-0.25' (40.503775 / -104.688333)	05/06/22	0-0.25	6.1	<0.00200	<0.00200	<0.00200	<0.00200	<0.200	30.7	<100	<0.00200	<0.00200	0.448	0.362	8.48	1.63
SS-06 @ 0-0.25' (40.503798 / -104.688456)	05/06/22	0-0.25	6.5	<0.00200	<0.00200	<0.00200	<0.00200	<0.200	<25.0	<100	<0.00200	<0.00200	0.418	0.362	8.47	1.56
SS-07 @ 0-0.25' (40.503753 / -104.688567)	05/06/22	0-0.25	3.8	<0.00200	<0.00200	<0.00200	<0.00200	<0.200	<25.0	<100	<0.00200	<0.00200	0.325	0.395	8.49	0.843
SS-08 @ 0-0.25' (40.503861 / -104.688542)	05/06/22	0-0.25	4.2	<0.00200	<0.00200	<0.00200	<0.00200	<0.200	<25.0	<100	<0.00200	<0.00200	0.338	0.372	8.48	0.812
SS-09 @ 0-0.25' (40.503902 / -104.688416)	05/06/22	0-0.25	3.7	<0.00200	<0.00200	<0.00200	<0.00200	<0.200	<25.0	<100	<0.00200	<0.00200	0.321	0.368	8.43	0.773
Background-01 @ 0-0.25' (40.503408 / -104.688391)	05/06/22	0-0.25	5.6	NA	NA	NA	NA	NA	NA	NA	NA	NA	0.377	0.369	8.49	1.70
Background-02 @ 0-0.25' (40.503430 / -104.688654)	05/06/22	0-0.25	3.4	NA	NA	NA	NA	NA	NA	NA	NA	NA	0.375	0.367	8.41	0.711
COGCC = Colorado Oil and Gas Conservation Commission NA - Not Analyzed mg/kg = milligrams per kilogram TPH-GRO = Total Petroleum Hydrocarbons - Gasoline Range Organics 1,2,4-TMB = 1,2,4-Trimethylbenzene mmhos/cm = millimhos per centimeter TPH-DRO = Total Petroleum Hydrocarbons - Diesel Range Organics 1,3,5-TMB = 1,3,5-Trimethylbenzene PID = Photoionization Detector TPH-RRO = Total Petroleum Hydrocarbons - Residual Range Organics ppm-v = parts per million by volume mg/L = milligrams per liter SAR = Sodium Adsorption Ratio Note: Values presented with a less than symbol (<) did not contain concentrations at or above the laboratory reporting limit. Note: Values presented in BOLD contained concentrations exceeding COGCC Table 915-1 Regulatory Limits.																

TABLE 3
PAH ANALYTICAL RESULTS SUMMARY
JANSSEN 8-G PAD
SURFACE RELEASE
40.503560 / -104.687816
SE1/4 NE1/4 SEC.8 T6N R65W 6PM
WELD COUNTY, COLORADO
LOCATION ID 443758
SPILL ID 482070

Sample Location (Latitude/Longitude)	Date	Approximate Depth (feet)	PID Reading (ppm- v)	1-Methyl- naphthalene (mg/kg)	2-Methyl-naphthalene (mg/kg)	Acenaphthene (mg/kg)	Anthracene (mg/kg)	Benzo(a)-anthracene (mg/kg)	Benzo(a)- pyrene (mg/kg)	Benzo(b)- fluoranthene (mg/kg)	Benzo(k)- fluoranthene (mg/kg)	Chrysene (mg/kg)	Dibenzo(a,h)- anthracene (mg/kg)	Fluoranthene (mg/kg)	Fluorene (mg/kg)	Indeno(1,2,3- cd)-pyrene (mg/kg)	Naphthalene (mg/kg)	Pyrene (mg/kg)
COGCC Table 915-1 Residential Screening Levels				18	24	360	1,800	1.1	0.11	1.1	11	110	0.11	240	240	1.1	2	180
SS-01 @ 0-0.25' (40.503612 / -104.687920)	05/06/22	0-0.25	10.4	<0.00067	<0.00067	<0.00067	<0.00067	<0.00067	<0.00067	<0.00067	<0.00067	<0.00067	<0.00067	<0.00067	<0.00067	<0.00067	<0.00067	<0.00067
SS-02 @ 0-0.25' (40.503638 / -104.687994)	05/06/22	0-0.25	10.8	<0.00067	<0.00067	<0.00067	<0.00067	<0.00067	<0.00067	<0.00067	0.000461	<0.00067	<0.00067	<0.00067	<0.00067	<0.00067	<0.00067	<0.00067
SS-03 @ 0-0.25' (40.50366 / -104.688124)	05/06/22	0-0.25	9.8	<0.00067	<0.00067	<0.00067	<0.00067	<0.00067	<0.00067	<0.00067	<0.00067	<0.00067	<0.00067	<0.00067	<0.00067	<0.00067	<0.00067	<0.00067
SS-04 @ 0-0.25' (40.503729 / -104.688341)	05/06/22	0-0.25	9.3	<0.00067	<0.00067	<0.00067	<0.00067	<0.00067	<0.00067	<0.00067	<0.00067	<0.00067	<0.00067	<0.00067	<0.00067	<0.00067	<0.00067	<0.00067
SS-05 @ 0-0.25' (40.503775 / -104.688333)	05/06/22	0-0.25	6.1	<0.00067	<0.00067	<0.00067	<0.00067	<0.00067	0.00053	<0.00067	0.000794	<0.00067	<0.00067	0.000798	<0.00067	<0.00067	<0.00067	0.000993
SS-06 @ 0-0.25' (40.503798 / -104.688456)	05/06/22	0-0.25	6.5	<0.00067	<0.00067	<0.00067	<0.00067	<0.00067	<0.00067	<0.00067	0.000529	<0.00067	<0.00067	<0.00067	<0.00067	<0.00067	<0.00067	<0.00067
SS-07 @ 0-0.25' (40.503753 / -104.688567)	05/06/22	0-0.25	3.8	<0.00067	<0.00067	<0.00067	<0.00067	<0.00067	<0.00067	<0.00067	0.000934	<0.00067	<0.00067	<0.00067	<0.00067	<0.00067	<0.00067	<0.00067
SS-08 @ 0-0.25' (40.503861 / -104.688542)	05/06/22	0-0.25	4.2	<0.00067	<0.00067	<0.00067	<0.00067	<0.00067	<0.00067	<0.00067	0.000458	<0.00067	<0.00067	<0.00067	<0.00067	<0.00067	<0.00067	<0.00067
SS-09 @ 0-0.25' (40.503902 / -104.688416)	05/06/22	0-0.25	3.7	<0.00067	<0.00067	<0.00067	<0.00067	<0.00067	<0.00067	<0.00067	0.000629	<0.00067	<0.00067	<0.00067	<0.00067	<0.00067	<0.00067	<0.00067
COGCC = Colorado Oil and Gas Conservation Commission mg/kg = milligrams per kilogram ppm-v = parts per million by volume Note: Values presented with a less than symbol (<) did not contain concentrations at or above the laboratory reporting limit. Note: Values presented in BOLD contained concentrations exceeding COGCC Table 915-1 Regulatory Limits																		

TABLE 4
METALS ANALYTICAL RESULTS SUMMARY
JANSSEN 8-G PAD
SURFACE RELEASE
40.503560 / -104.687816
SE1/4 NE1/4 SEC.8 T6N R65W 6PM
WELD COUNTY, COLORADO
LOCATION ID 443758
SPILL ID 482070

Sample Location (Latitude/Longitude)	Date	Approximate Depth (feet)	Arsenic (mg/kg)	Barium (mg/kg)	Cadmium (mg/kg)	Hexavalent Chromium (mg/kg)	Copper (mg/kg)	Lead (mg/kg)	Nickel (mg/kg)	Selenium (mg/kg)	Silver (mg/kg)	Zinc (mg/kg)
COGCC Table 915-1 Residential Screening Levels			0.68***	15,000	71	0.3**	3,100	400	1,500	390	390	23,000
Local Cleanup Levels			3.2***	--	--	0.1 to 1**	--	--	--	--	--	--
SS-02 @ 0-0.25' (40.503638 / -104.687994)	05/06/22	0-0.25	1.52***	93.2	0.0995	<0.244**	5.75	5.27	6.3	<0.25	0.0205	24.2
Background-01 @ 0-0.25' (40.503408 / -104.688391)	05/06/22	0-0.25	3.45***	108	0.107	<0.244**	6.35	6.59	7.43	0.371	0.024	27.9
Background-02 @ 0-0.25' (40.503430 / -104.688654)	05/06/22	0-0.25	1.66***	108	0.108	<0.244**	5.98	5.31	6.51	<0.25	0.023	26.2

COGCC = Colorado Oil and Gas Conservation Commission

mg/kg = milligrams per kilogram

Notes: Values presented with a less than symbol (<) did not contain concentrations at or above the laboratory reporting limit or minimum detection levels.

Values presented in **BOLD** contained concentrations exceeding applicable COGCC Table 915-1 Regulatory Limits

**Achievable practical quantitative limits for Hexavalent Chromium in soils is in the range of 0.1 to 1 mg/kg.

***Arsenic is naturally occurring in Colorado. Local clean-up level (3.19 mg/kg) is 1.25*average background (2.55 mg/kg).



ATTACHMENT A

Photolog

Janssen 8-GPad

SENE Sec.8 T6N R65W 6PM

Weld County, CO

Location ID 443758

Spill ID 482070

Surface Release

April - May 2022



EAGLE
ENVIRONMENTAL
CONSULTING, INC.

8000 W 44th Ave, Wheat Ridge, CO 80033
Ph: 303-433-0479 • F: 303-325-5449



Initial Release – 04/22/22



Condensate mist NW to pad boundary. Mist observed on fencing and presumed impacts offsite – confirmation pending

Release cleanup, offsite impact confirmation, and confirmation soil sampling coordinated

Release Assessment - 05/06/22



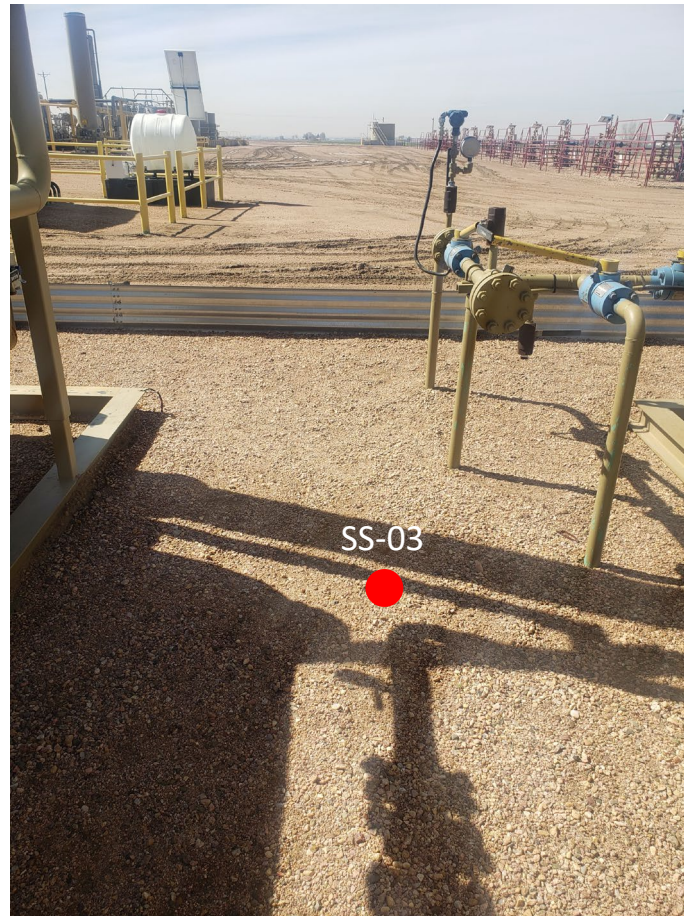
Looking west

No petroleum hydrocarbon staining or odor observed

Samples collected:

SS-01@0-0.25' – 10.4 ppm-v

SS-02@0-0.25' – 10.8 ppm-v



Looking south

No petroleum hydrocarbon staining or odor observed

Samples collected:

SS-03@0-0.25' – 9.8 ppm-v



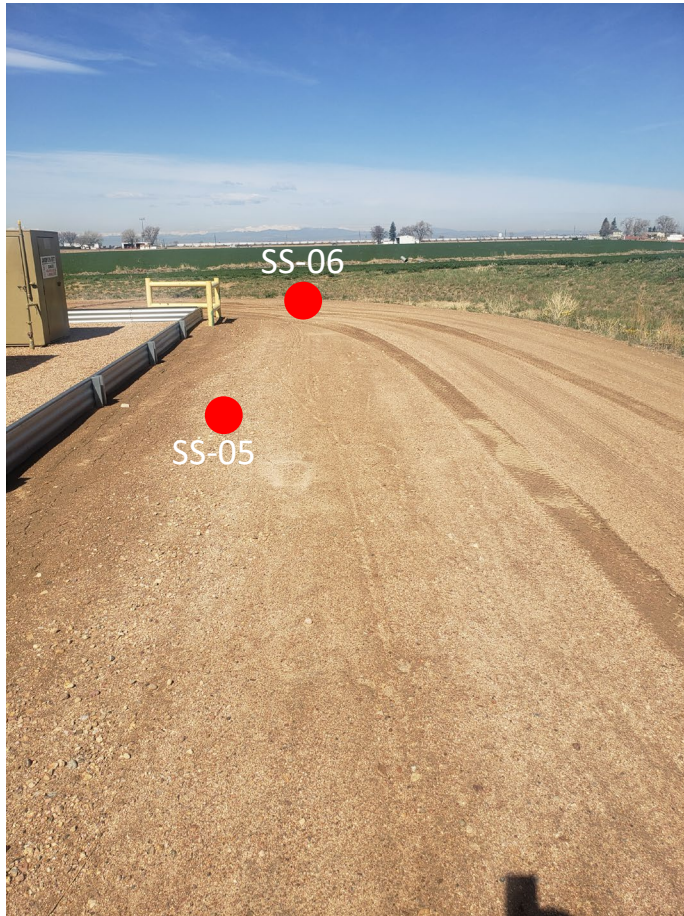
Looking south

No petroleum hydrocarbon staining or odor observed

Samples collected:

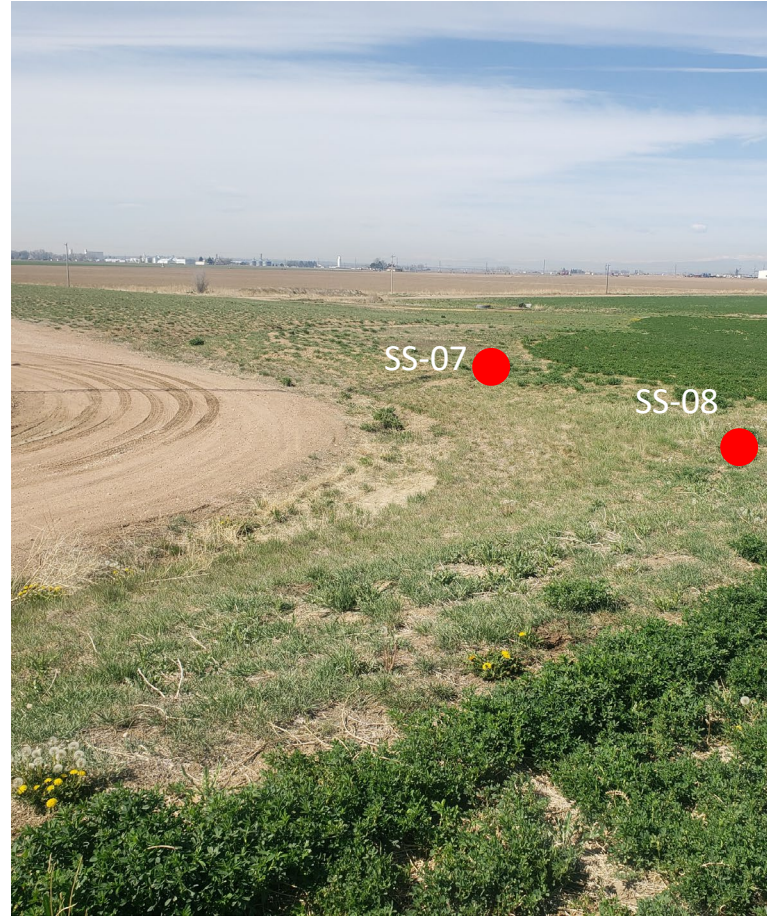
SS-04@0-0.25' – 9.3 ppm-v

Release Assessment - 05/06/22



Looking west

No petroleum hydrocarbon staining or odor observed
Samples collected:
SS-05@0-0.25' – 6.1 ppm-v
SS-06@0-0.25' – 6.5 ppm-v



Looking southwest

No petroleum hydrocarbon staining or odor observed
Samples collected:
SS-07@0-0.25' – 3.8 ppm-v
SS-08@0-0.25' – 4.2 ppm-v



Looking east

No petroleum hydrocarbon staining or odor observed
Samples collected:
SS-09@0-0.25' – 3.7 ppm-v



ATTACHMENT B

Laboratory Analytical Reports



May 25, 2022

Eagle Environmental Consulting, Inc.

Martin C Eckert III

8000 W 44th Ave

Wheat Ridge CO 80033

Project Name - Bonanza - Janssen 8-G Pad

Project Number - [none]

Attached are your analytical results for Bonanza - Janssen 8-G Pad received by Origins Laboratory, Inc. May 06, 2022. This project is associated with Origins project number Y205174-01.

The analytical results in the following report were analyzed under the guidelines of EPA Methods. These methods are identified as follows; "SW" are defined in SW-846, "EPA" are defined in 40CFR part 136 and "SM" are defined in the most current revision of Standard Methods For the Examination of Water and Wastewater.

The analytical results apply specifically to the samples and analyses specified per the attached Chain of Custody. As such, this report shall not be reproduced except in full, without the written approval of Origin's laboratory.

Unless otherwise noted, the analytical results for all soil samples are reported on a wet weight basis. All analytical analyses were performed under NELAP guidelines unless noted by a data qualifier.

Any holding time exceedances, deviations from the method specifications or deviations from Origins Laboratory's Standard Operating Procedures are outlined in the case narrative.

Thank you for selecting Origins for your analytical needs. Please contact us with any questions concerning this report, or if we can help with anything at all.

Origins Laboratory, Inc.
303.433.1322
o-squad@oelabinc.com



1725 Elk Place, Denver, CO 80211 | Phone: 303.433.1322 | Fax: 303.265.9645

Eagle Environmental Consulting, Inc.

8000 W 44th Ave

Wheat Ridge CO 80033

Martin C Eckert III

Project Number: [none]

Project: Bonanza - Janssen 8-G Pad

CROSS REFERENCE REPORT

Sample ID	Laboratory ID	Matrix	Date Sampled	Date Received
SS-01@0-0.25'	Y205174-01	Soil	May 6, 2022 10:15	05/06/2022 14:55
SS-02@0-0.25'	Y205174-02	Soil	May 6, 2022 10:20	05/06/2022 14:55
SS-03@0-0.25'	Y205174-03	Soil	May 6, 2022 10:25	05/06/2022 14:55
SS-04@0-0.25'	Y205174-04	Soil	May 6, 2022 10:30	05/06/2022 14:55
SS-05@0-0.25'	Y205174-05	Soil	May 6, 2022 10:35	05/06/2022 14:55
SS-06@0-0.25'	Y205174-06	Soil	May 6, 2022 10:40	05/06/2022 14:55
SS-07@0-0.25'	Y205174-07	Soil	May 6, 2022 10:45	05/06/2022 14:55
SS-08@0-0.25'	Y205174-08	Soil	May 6, 2022 10:50	05/06/2022 14:55
SS-09@0-0.25'	Y205174-09	Soil	May 6, 2022 10:55	05/06/2022 14:55

Origins Laboratory, Inc.



Jen Pellegrini For Noelle Doyle Mathis, President

The results in this report apply to the samples analyzed in accordance with the chain of custody document. This analytical report must be reproduced in its entirety.

Martin C Eckert III
Project Number: [none]
Project: Bonanza - Janssen 8-G Pad

[illegible]

Origins Laboratory, Inc.

Jeff Pelligrini

Jen Pellegrini For Noelle Doyle Mathis, President

The results in this report apply to the samples analyzed in accordance with the chain of custody document. This analytical report must be reproduced in its entirety.

Eagle Environmental Consulting, Inc.
8000 W 44th Ave
Wheat Ridge CO 80033

Martin C Eckert III
Project Number: [none]
Project: Bonanza - Janssen 8-G Pad

Origins Laboratory

F-012207-01-R1
Effective Date: 01/09/12

Sample Receipt Checklist

Origins Work Order: Y205174 Client: Eagle
Client Project ID: Janssen 8-G Pad

Checklist Completed by: SG Shipped Via: HD
(UPS, FedEx, Hand Delivered, Pick-up, etc.)
Date/time completed: 5/9/22 Airbill #: N/A

Matrix(s) Received: (Check all that apply): X Soil/Solid Water Other:

Cooler Number/Temperature: 1, 3.4 °C °C °C °C (Describe)

Thermometer ID: T004

Requirement Description	Yes	No	N/A	Comments (if any)
If samples require cooling, was the temperature between 0°C to ≤ 5°C ⁽¹⁾ ?	<input checked="" type="checkbox"/>	<input type="checkbox"/>	<input type="checkbox"/>	
Is there ice present (document if blue ice is used)	<input checked="" type="checkbox"/>	<input type="checkbox"/>	<input type="checkbox"/>	
Are custody seals present on cooler? (If so, document in comments if they are signed and dated, broken or intact)	<input type="checkbox"/>	<input checked="" type="checkbox"/>	<input type="checkbox"/>	
Are custody seals present on each sample container? (If so, document in comments if they are signed and dated, broken or intact)	<input type="checkbox"/>	<input checked="" type="checkbox"/>	<input type="checkbox"/>	
Were all samples received intact ⁽¹⁾ ?	<input checked="" type="checkbox"/>	<input type="checkbox"/>	<input type="checkbox"/>	
Was adequate sample volume provided ⁽¹⁾ ?	<input checked="" type="checkbox"/>	<input type="checkbox"/>	<input type="checkbox"/>	
Are short holding time analytes or samples with HTs due within 48 hours present ⁽¹⁾ ?	<input type="checkbox"/>	<input checked="" type="checkbox"/>	<input type="checkbox"/>	
Is a chain-of-custody (COC) present and filled out completely ⁽¹⁾ ?	<input checked="" type="checkbox"/>	<input type="checkbox"/>	<input type="checkbox"/>	
Does the COC agree with the number and type of sample bottles received ⁽¹⁾ ?	<input checked="" type="checkbox"/>	<input type="checkbox"/>	<input type="checkbox"/>	
Do the sample IDs on the bottle labels match the COC ⁽¹⁾ ?	<input checked="" type="checkbox"/>	<input type="checkbox"/>	<input type="checkbox"/>	
Is the COC properly relinquished by the client with date and time recorded ⁽¹⁾ ?	<input checked="" type="checkbox"/>	<input type="checkbox"/>	<input type="checkbox"/>	
For volatiles in water — is there headspace (> ¼ inch bubble) present? If yes, contact client and note in narrative.	<input type="checkbox"/>	<input type="checkbox"/>	<input checked="" type="checkbox"/>	
Are samples preserved that require preservation and was it checked ⁽¹⁾ ? (note ID of confirmation instrument used in comments) / (preservation is not confirmed for subcontracted analyses in order to insure sample integrity)/(pH <2 for samples preserved with HNO ₃ , HCL, H ₂ SO ₄) / (pH >10 for samples preserved with NaAsO ₂ +NaOH, ZnAc+NaOH)	<input type="checkbox"/>	<input checked="" type="checkbox"/>	<input type="checkbox"/>	
Additional Comments (if any):				

⁽¹⁾ If NO, then contact the client before proceeding with analysis and note date/time and person contacted as well as the corrective action to in the additional comments (above) and the case narrative.

Reviewed by (Project Manager) JB

Date/Time Reviewed 5-10-22

Origins Laboratory, Inc.

Jefe Pellegrini

Jen Pellegrini For Noelle Doyle Mathis, President

The results in this report apply to the samples analyzed in accordance with the chain of custody document. This analytical report must be reproduced in its entirety.

Eagle Environmental Consulting, Inc.
8000 W 44th Ave
Wheat Ridge CO 80033

Martin C Eckert III
Project Number: [none]
Project: Bonanza - Janssen 8-G Pad

SS-01@0-0.25'
5/6/2022 10:15:00AM

Analyte	Result	Min Detection Limit	Reporting Limit	Units	Dilution	Batch	Prepared	Analyzed	Notes
---------	--------	---------------------	-----------------	-------	----------	-------	----------	----------	-------

Origins Laboratory, Inc.
Y205174-01 (Soil)

Boron (DTPA Sorbitol)

Boron	0.519	0.0999	mg/L	1	B2E1011	05/10/2022	05/11/2022	
-------	-------	--------	------	---	---------	------------	------------	--

DRO/ORO by EPA 8015D

Diesel (C10-C28)	ND	25.0	mg/kg	1	B2E1004	05/10/2022	05/13/2022	U
Residual Range Organics (C28-C40)	ND	100	"	"	"	"	"	U

Surrogate: o-Terphenyl	88.3 %	50-150			"	"	"
------------------------	--------	--------	--	--	---	---	---

GBTEX+TMBs by 8260D

1,2,4-Trimethylbenzene	ND	0.00200	mg/kg	1	B2E0916	05/09/2022	05/09/2022	U
1,3,5-Trimethylbenzene	ND	0.00200	"	"	"	"	"	U
Benzene	ND	0.00200	"	"	"	"	"	U
Ethylbenzene	ND	0.00200	"	"	"	"	"	U
Toluene	ND	0.00200	"	"	"	"	"	U
Xylenes, total	ND	0.00200	"	"	"	"	"	U
Gasoline Range Hydrocarbons	ND	0.200	"	"	"	"	"	U

Surrogate: 1,2-Dichloroethane-d4	113 %	70-130			"	"	"
----------------------------------	-------	--------	--	--	---	---	---

Origins Laboratory, Inc.



The results in this report apply to the samples analyzed in accordance with the chain of custody document. This analytical report must be reproduced in its entirety.

Jen Pellegrini For Noelle Doyle Mathis, President

Eagle Environmental Consulting, Inc.
8000 W 44th Ave
Wheat Ridge CO 80033

Martin C Eckert III
Project Number: [none]
Project: Bonanza - Janssen 8-G Pad

SS-01@0-0.25'
5/6/2022 10:15:00AM

Analyte	Result	Min Detection Limit	Reporting Limit	Units	Dilution	Batch	Prepared	Analyzed	Notes
---------	--------	---------------------	-----------------	-------	----------	-------	----------	----------	-------

Origins Laboratory, Inc.
Y205174-01 (Soil)

GBTEX+TMBs by 8260D

Surrogate: Toluene-d8	90.4 %	70-130	B2E09 16	05/09/2022	05/09/2022
Surrogate: 4-Bromofluorobenzene	99.8 %	70-130	"	"	"

Metals by Saturated Paste by EPA 6010

Calcium	0.883	0.499	meq/L	10	[CALC]	05/10/2022	05/11/2022
Magnesium	ND	0.823	"	"	"	"	"
Sodium	2.84	0.435	"	"	"	"	"

PAH by 8270D SIM

1-Methylnaphthalene	ND	0.000364	0.00067	mg/Kg	1	L616483	05/17/2022	05/17/2022
2-Methylnaphthalene	ND	0.000645	0.00067	"	"	"	"	"
Acenaphthene	ND	0.000304	0.00067	"	"	"	"	"
Anthracene	ND	0.000334	0.00067	"	"	"	"	"
Benzo(a)anthracene	ND	0.000493	0.00067	"	"	"	"	"
Benzo(a)pyrene	ND	0.000468	0.00067	"	"	"	"	"
Benzo(b)fluoranthene	ND	0.000585	0.00067	"	"	"	"	"
Benzo(k)fluoranthene	ND	0.000437	0.00067	"	"	"	"	"
Chrysene	ND	0.000624	0.00067	"	"	"	"	"
Dibenz(a,h)anthracene	ND	0.000614	0.00067	"	"	"	"	"
Fluoranthene	ND	0.000394	0.00067	"	"	"	"	"

Origins Laboratory, Inc.



The results in this report apply to the samples analyzed in accordance with the chain of custody document. This analytical report must be reproduced in its entirety.

Jen Pellegrini For Noelle Doyle Mathis, President

Eagle Environmental Consulting, Inc.
8000 W 44th Ave
Wheat Ridge CO 80033

Martin C Eckert III
Project Number: [none]
Project: Bonanza - Janssen 8-G Pad

SS-01@0-0.25'
5/6/2022 10:15:00AM

Analyte	Result	Min Detection Limit	Reporting Limit	Units	Dilution	Batch	Prepared	Analyzed	Notes
---------	--------	---------------------	-----------------	-------	----------	-------	----------	----------	-------

Waypoint Analytical, Inc.
Y205174-01 (Soil)

PAH by 8270D SIM

Fluorene	ND	0.000286	0.00067	mg/Kg	1	L616483	05/17/2022	05/17/2022
Indeno(1,2,3-cd)pyrene	ND	0.000627	0.00067	"	"	"	"	"
Naphthalene	ND	0.000484	0.00067	"	"	"	"	"
Pyrene	ND	0.000643	0.00067	"	"	"	"	"

Surrogate: 2-Fluorobiphenyl	49.7 %	33-115	"	"	"
Surrogate: 4-Terphenyl-d14	64.8 %	33-122	"	"	"
Surrogate: Nitrobenzene-d5	57.2 %	29-110	"	"	"

pH in Soil by 9045D

pH	8.58	pH Units	1	B2E1010	05/10/2022	05/11/2022
----	------	----------	---	---------	------------	------------

SAR by 20B Saturated Paste

SAR	3.60	SAR	1	B2E1009	05/10/2022	05/11/2022
-----	------	-----	---	---------	------------	------------

Specific Conductance Mod. 9050A

Specific Conductance (EC)	0.460	0.00500	mmhos/cm	1	B2E1010	05/10/2022	05/11/2022
---------------------------	-------	---------	----------	---	---------	------------	------------

Origins Laboratory, Inc.



The results in this report apply to the samples analyzed in accordance with the chain of custody document. This analytical report must be reproduced in its entirety.

Jen Pellegrini For Noelle Doyle Mathis, President

Eagle Environmental Consulting, Inc.
8000 W 44th Ave
Wheat Ridge CO 80033

Martin C Eckert III
Project Number: [none]
Project: Bonanza - Janssen 8-G Pad

SS-02@0-0.25'
5/6/2022 10:20:00AM

Analyte	Result	Min Detection Limit	Reporting Limit	Units	Dilution	Batch	Prepared	Analyzed	Notes
---------	--------	---------------------	-----------------	-------	----------	-------	----------	----------	-------

Origins Laboratory, Inc.
Y205174-02 (Soil)

Boron (DTPA Sorbitol)

Boron	0.473	0.0986	mg/L	1	B2E1011	05/10/2022	05/11/2022	
-------	-------	--------	------	---	---------	------------	------------	--

DRO/ORO by EPA 8015D

Diesel (C10-C28)	ND	25.0	mg/kg	1	B2E1004	05/10/2022	05/13/2022	U
Residual Range Organics (C28-C40)	ND	100	"	"	"	"	"	U

Surrogate: o-Terphenyl	94.6 %	50-150	"	"	"	"	"
------------------------	--------	--------	---	---	---	---	---

GBTEX+TMBs by 8260D

1,2,4-Trimethylbenzene	ND	0.00200	mg/kg	1	B2E0916	05/09/2022	05/09/2022	U
1,3,5-Trimethylbenzene	ND	0.00200	"	"	"	"	"	U
Benzene	ND	0.00200	"	"	"	"	"	U
Ethylbenzene	ND	0.00200	"	"	"	"	"	U
Toluene	ND	0.00200	"	"	"	"	"	U
Xylenes, total	ND	0.00200	"	"	"	"	"	U
Gasoline Range Hydrocarbons	ND	0.200	"	"	"	"	"	U

Surrogate: 1,2-Dichloroethane-d4	111 %	70-130	"	"	"	"	"
----------------------------------	-------	--------	---	---	---	---	---

Origins Laboratory, Inc.



The results in this report apply to the samples analyzed in accordance with the chain of custody document. This analytical report must be reproduced in its entirety.

Jen Pellegrini For Noelle Doyle Mathis, President

Eagle Environmental Consulting, Inc.
8000 W 44th Ave
Wheat Ridge CO 80033

Martin C Eckert III
Project Number: [none]
Project: Bonanza - Janssen 8-G Pad

SS-02@0-0.25'
5/6/2022 10:20:00AM

Analyte	Result	Min Detection Limit	Reporting Limit	Units	Dilution	Batch	Prepared	Analyzed	Notes
---------	--------	---------------------	-----------------	-------	----------	-------	----------	----------	-------

Origins Laboratory, Inc.
Y205174-02 (Soil)

GBTEX+TMBs by 8260D

Surrogate: Toluene-d8	97.5 %	70-130	B2E09 16	05/09/2022	05/09/2022
Surrogate: 4-Bromofluorobenzene	100 %	70-130	"	"	"

Metals by Saturated Paste by EPA 6010

Calcium	1.12	0.499	meq/L	10	[CALC]	05/10/2022	05/11/2022
Magnesium	ND	0.823	"	"	"	"	"
Sodium	2.47	0.435	"	"	"	"	"

PAH by 8270D SIM

1-Methylnaphthalene	ND	0.000364	0.00067	mg/Kg	1	L616483	05/17/2022	05/17/2022
2-Methylnaphthalene	ND	0.000645	0.00067	"	"	"	"	"
Acenaphthene	ND	0.000304	0.00067	"	"	"	"	"
Anthracene	ND	0.000334	0.00067	"	"	"	"	"
Benzo(a)anthracene	ND	0.000493	0.00067	"	"	"	"	"
Benzo(a)pyrene	ND	0.000468	0.00067	"	"	"	"	"
Benzo(b)fluoranthene	ND	0.000585	0.00067	"	"	"	"	"
Benzo(k)fluoranthene	0.000461	0.000437	0.00067	"	"	"	"	" J
Chrysene	ND	0.000624	0.00067	"	"	"	"	"
Dibenz(a,h)anthracene	ND	0.000614	0.00067	"	"	"	"	"
Fluoranthene	ND	0.000394	0.00067	"	"	"	"	"

Origins Laboratory, Inc.



The results in this report apply to the samples analyzed in accordance with the chain of custody document. This analytical report must be reproduced in its entirety.

Jen Pellegrini For Noelle Doyle Mathis, President

Eagle Environmental Consulting, Inc.
8000 W 44th Ave
Wheat Ridge CO 80033

Martin C Eckert III
Project Number: [none]
Project: Bonanza - Janssen 8-G Pad

SS-02@0-0.25'
5/6/2022 10:20:00AM

Analyte	Result	Min Detection Limit	Reporting Limit	Units	Dilution	Batch	Prepared	Analyzed	Notes
---------	--------	---------------------	-----------------	-------	----------	-------	----------	----------	-------

Waypoint Analytical, Inc.
Y205174-02 (Soil)

PAH by 8270D SIM

Fluorene	ND	0.000286	0.00067	mg/Kg	1	L616483	05/17/2022	05/17/2022
Indeno(1,2,3-cd)pyrene	ND	0.000627	0.00067	"	"	"	"	"
Naphthalene	ND	0.000484	0.00067	"	"	"	"	"
Pyrene	ND	0.000643	0.00067	"	"	"	"	"

Surrogate: 2-Fluorobiphenyl	44.9 %		33-115			"	"	"
Surrogate: 4-Terphenyl-d14	57.5 %		33-122			"	"	"
Surrogate: Nitrobenzene-d5	50.6 %		29-110			"	"	"

pH in Soil by 9045D

pH	8.59			pH Units	1	B2E1010	05/10/2022	05/11/2022
----	------	--	--	----------	---	---------	------------	------------

SAR by 20B Saturated Paste

SAR	2.88			SAR	1	B2E1009	05/10/2022	05/11/2022
-----	------	--	--	-----	---	---------	------------	------------

Specific Conductance Mod. 9050A

Specific Conductance (EC)	0.415		0.00500	mmhos/cm	1	B2E1010	05/10/2022	05/11/2022
---------------------------	-------	--	---------	----------	---	---------	------------	------------

Total Metals by 6020B

Arsenic	1.52	0.0855	0.25	mg/Kg	5	L615973	05/13/2022	05/18/2022
---------	------	--------	------	-------	---	---------	------------	------------

Origins Laboratory, Inc.



The results in this report apply to the samples analyzed in accordance with the chain of custody document. This analytical report must be reproduced in its entirety.

Jen Pellegrini For Noelle Doyle Mathis, President

Eagle Environmental Consulting, Inc.
8000 W 44th Ave
Wheat Ridge CO 80033

Martin C Eckert III
Project Number: [none]
Project: Bonanza - Janssen 8-G Pad

SS-02@0-0.25'

5/6/2022 10:20:00AM

Analyte	Result	Min Detection Limit	Reporting Limit	Units	Dilution	Batch	Prepared	Analyzed	Notes
---------	--------	---------------------	-----------------	-------	----------	-------	----------	----------	-------

Waypoint Analytical, Inc.
Y205174-02 (Soil)

Total Metals by 6020B

Barium	93.2	0.042	0.25	mg/Kg	5	L615973	05/13/2022	05/18/2022	
Cadmium	0.0995	0.0259	0.25	"	"	"	"	"	J
Copper	5.75	0.0806	0.25	"	"	"	"	"	
Lead	5.27	0.031	0.25	"	"	"	"	"	
Nickel	6.3	0.0633	0.25	"	"	"	"	"	
Selenium	ND	0.103	0.25	"	"	"	"	"	
Silver	0.0205	0.0067	0.25	"	"	"	"	"	J
Zinc	24.2	0.534	2.5	"	"	"	"	"	

Total Metals by 7196A

Chromium, Hexavalent	ND	0.244	0.5	mg/Kg	1	L616389	05/06/2022	05/16/2022	
----------------------	----	-------	-----	-------	---	---------	------------	------------	--

Origins Laboratory, Inc.



The results in this report apply to the samples analyzed in accordance with the chain of custody document. This analytical report must be reproduced in its entirety.

Jen Pellegrini For Noelle Doyle Mathis, President

Eagle Environmental Consulting, Inc.
8000 W 44th Ave
Wheat Ridge CO 80033

Martin C Eckert III
Project Number: [none]
Project: Bonanza - Janssen 8-G Pad

SS-03@0-0.25'
5/6/2022 10:25:00AM

Analyte	Result	Min Detection Limit	Reporting Limit	Units	Dilution	Batch	Prepared	Analyzed	Notes
---------	--------	---------------------	-----------------	-------	----------	-------	----------	----------	-------

Origins Laboratory, Inc.
Y205174-03 (Soil)

Boron (DTPA Sorbitol)

Boron	0.283	0.101	mg/L	1	B2E1011	05/10/2022	05/11/2022	
-------	-------	-------	------	---	---------	------------	------------	--

DRO/ORO by EPA 8015D

Diesel (C10-C28)	ND	25.0	mg/kg	1	B2E1004	05/10/2022	05/13/2022	U
Residual Range Organics (C28-C40)	ND	100	"	"	"	"	"	U

Surrogate: o-Terphenyl	76.0 %	50-150	"	"	"	"	"	
------------------------	--------	--------	---	---	---	---	---	--

GBTEX+TMBs by 8260D

1,2,4-Trimethylbenzene	ND	0.00200	mg/kg	1	B2E0916	05/09/2022	05/09/2022	U
1,3,5-Trimethylbenzene	ND	0.00200	"	"	"	"	"	U
Benzene	ND	0.00200	"	"	"	"	"	U
Ethylbenzene	ND	0.00200	"	"	"	"	"	U
Toluene	ND	0.00200	"	"	"	"	"	U
Xylenes, total	ND	0.00200	"	"	"	"	"	U
Gasoline Range Hydrocarbons	ND	0.200	"	"	"	"	"	U

Surrogate: 1,2-Dichloroethane-d4	111 %	70-130	"	"	"	"	"	
----------------------------------	-------	--------	---	---	---	---	---	--

Origins Laboratory, Inc.



The results in this report apply to the samples analyzed in accordance with the chain of custody document. This analytical report must be reproduced in its entirety.

Jen Pellegrini For Noelle Doyle Mathis, President

Eagle Environmental Consulting, Inc.
8000 W 44th Ave
Wheat Ridge CO 80033

Martin C Eckert III
Project Number: [none]
Project: Bonanza - Janssen 8-G Pad

SS-03@0-0.25'
5/6/2022 10:25:00AM

Analyte	Result	Min Detection Limit	Reporting Limit	Units	Dilution	Batch	Prepared	Analyzed	Notes
---------	--------	---------------------	-----------------	-------	----------	-------	----------	----------	-------

Origins Laboratory, Inc.
Y205174-03 (Soil)

GBTEX+TMBs by 8260D

Surrogate: Toluene-d8	88.5 %	70-130	B2E09 16	05/09/2022	05/09/2022
Surrogate: 4-Bromofluorobenzene	98.8 %	70-130	"	"	"

Metals by Saturated Paste by EPA 6010

Calcium	0.793	0.499	meq/L	10	[CALC]	05/10/2022	05/11/2022
Magnesium	ND	0.823	"	"	"	"	"
Sodium	1.06	0.435	"	"	"	"	"

PAH by 8270D SIM

1-Methylnaphthalene	ND	0.000364	0.00067	mg/Kg	1	L616483	05/17/2022	05/17/2022
2-Methylnaphthalene	ND	0.000645	0.00067	"	"	"	"	"
Acenaphthene	ND	0.000304	0.00067	"	"	"	"	"
Anthracene	ND	0.000334	0.00067	"	"	"	"	"
Benzo(a)anthracene	ND	0.000493	0.00067	"	"	"	"	"
Benzo(a)pyrene	ND	0.000468	0.00067	"	"	"	"	"
Benzo(b)fluoranthene	ND	0.000585	0.00067	"	"	"	"	"
Benzo(k)fluoranthene	ND	0.000437	0.00067	"	"	"	"	"
Chrysene	ND	0.000624	0.00067	"	"	"	"	"
Dibenz(a,h)anthracene	ND	0.000614	0.00067	"	"	"	"	"
Fluoranthene	ND	0.000394	0.00067	"	"	"	"	"

Origins Laboratory, Inc.



The results in this report apply to the samples analyzed in accordance with the chain of custody document. This analytical report must be reproduced in its entirety.

Jen Pellegrini For Noelle Doyle Mathis, President

Eagle Environmental Consulting, Inc.
8000 W 44th Ave
Wheat Ridge CO 80033

Martin C Eckert III
Project Number: [none]
Project: Bonanza - Janssen 8-G Pad

SS-03@0-0.25'
5/6/2022 10:25:00AM

Analyte	Result	Min Detection Limit	Reporting Limit	Units	Dilution	Batch	Prepared	Analyzed	Notes
---------	--------	---------------------	-----------------	-------	----------	-------	----------	----------	-------

Waypoint Analytical, Inc.
Y205174-03 (Soil)

PAH by 8270D SIM

Fluorene	ND	0.000286	0.00067	mg/Kg	1	L616483	05/17/2022	05/17/2022
Indeno(1,2,3-cd)pyrene	ND	0.000627	0.00067	"	"	"	"	"
Naphthalene	ND	0.000484	0.00067	"	"	"	"	"
Pyrene	ND	0.000643	0.00067	"	"	"	"	"

Surrogate: 2-Fluorobiphenyl	50 %	33-115	"	"	"
Surrogate: 4-Terphenyl-d14	63.1 %	33-122	"	"	"
Surrogate: Nitrobenzene-d5	55.5 %	29-110	"	"	"

pH in Soil by 9045D

pH	8.49	pH Units	1	B2E1010	05/10/2022	05/11/2022
----	------	----------	---	---------	------------	------------

SAR by 20B Saturated Paste

SAR	1.39	SAR	1	B2E1009	05/10/2022	05/11/2022
-----	------	-----	---	---------	------------	------------

Specific Conductance Mod. 9050A

Specific Conductance (EC)	0.255	0.00500	mmhos/cm	1	B2E1010	05/10/2022	05/11/2022
---------------------------	-------	---------	----------	---	---------	------------	------------

Origins Laboratory, Inc.



The results in this report apply to the samples analyzed in accordance with the chain of custody document. This analytical report must be reproduced in its entirety.

Jen Pellegrini For Noelle Doyle Mathis, President

Eagle Environmental Consulting, Inc.
8000 W 44th Ave
Wheat Ridge CO 80033

Martin C Eckert III
Project Number: [none]
Project: Bonanza - Janssen 8-G Pad

SS-04@0-0.25'
5/6/2022 10:30:00AM

Analyte	Result	Min Detection Limit	Reporting Limit	Units	Dilution	Batch	Prepared	Analyzed	Notes
---------	--------	---------------------	-----------------	-------	----------	-------	----------	----------	-------

Origins Laboratory, Inc.
Y205174-04 (Soil)

Boron (DTPA Sorbitol)

Boron	0.236	0.0985	mg/L	1	B2E1011	05/10/2022	05/11/2022	
-------	-------	--------	------	---	---------	------------	------------	--

DRO/ORO by EPA 8015D

Diesel (C10-C28)	ND	25.0	mg/kg	1	B2E1004	05/10/2022	05/13/2022	U
Residual Range Organics (C28-C40)	ND	100	"	"	"	"	"	U

Surrogate: o-Terphenyl	77.3 %	50-150			"	"	"	
------------------------	--------	--------	--	--	---	---	---	--

GBTEX+TMBs by 8260D

1,2,4-Trimethylbenzene	ND	0.00200	mg/kg	1	B2E0916	05/09/2022	05/09/2022	U
1,3,5-Trimethylbenzene	ND	0.00200	"	"	"	"	"	U
Benzene	ND	0.00200	"	"	"	"	"	U
Ethylbenzene	ND	0.00200	"	"	"	"	"	U
Toluene	ND	0.00200	"	"	"	"	"	U
Xylenes, total	ND	0.00200	"	"	"	"	"	U
Gasoline Range Hydrocarbons	ND	0.200	"	"	"	"	"	U

Surrogate: 1,2-Dichloroethane-d4	112 %	70-130			"	"	"	
----------------------------------	-------	--------	--	--	---	---	---	--

Origins Laboratory, Inc.



The results in this report apply to the samples analyzed in accordance with the chain of custody document. This analytical report must be reproduced in its entirety.

Jen Pellegrini For Noelle Doyle Mathis, President

Eagle Environmental Consulting, Inc.
8000 W 44th Ave
Wheat Ridge CO 80033

Martin C Eckert III
Project Number: [none]
Project: Bonanza - Janssen 8-G Pad

SS-04@0-0.25'
5/6/2022 10:30:00AM

Analyte	Result	Min Detection Limit	Reporting Limit	Units	Dilution	Batch	Prepared	Analyzed	Notes
---------	--------	---------------------	-----------------	-------	----------	-------	----------	----------	-------

Origins Laboratory, Inc.
Y205174-04 (Soil)

GBTEX+TMBs by 8260D

Surrogate: Toluene-d8	92.4 %	70-130	B2E09 16	05/09/2022	05/09/2022
Surrogate: 4-Bromofluorobenzene	99.3 %	70-130	"	"	"

Metals by Saturated Paste by EPA 6010

Calcium	0.908	0.499	meq/L	10	[CALC]	05/10/2022	05/11/2022
Magnesium	ND	0.823	"	"	"	"	"
Sodium	1.20	0.435	"	"	"	"	"

PAH by 8270D SIM

1-Methylnaphthalene	ND	0.000364	0.00067	mg/Kg	1	L616483	05/17/2022	05/17/2022
2-Methylnaphthalene	ND	0.000645	0.00067	"	"	"	"	"
Acenaphthene	ND	0.000304	0.00067	"	"	"	"	"
Anthracene	ND	0.000334	0.00067	"	"	"	"	"
Benzo(a)anthracene	ND	0.000493	0.00067	"	"	"	"	"
Benzo(a)pyrene	ND	0.000468	0.00067	"	"	"	"	"
Benzo(b)fluoranthene	ND	0.000585	0.00067	"	"	"	"	"
Benzo(k)fluoranthene	ND	0.000437	0.00067	"	"	"	"	"
Chrysene	ND	0.000624	0.00067	"	"	"	"	"
Dibenz(a,h)anthracene	ND	0.000614	0.00067	"	"	"	"	"
Fluoranthene	ND	0.000394	0.00067	"	"	"	"	"

Origins Laboratory, Inc.



The results in this report apply to the samples analyzed in accordance with the chain of custody document. This analytical report must be reproduced in its entirety.

Jen Pellegrini For Noelle Doyle Mathis, President

Eagle Environmental Consulting, Inc.
8000 W 44th Ave
Wheat Ridge CO 80033

Martin C Eckert III
Project Number: [none]
Project: Bonanza - Janssen 8-G Pad

SS-04@0-0.25'
5/6/2022 10:30:00AM

Analyte	Result	Min Detection Limit	Reporting Limit	Units	Dilution	Batch	Prepared	Analyzed	Notes
---------	--------	---------------------	-----------------	-------	----------	-------	----------	----------	-------

Waypoint Analytical, Inc.
Y205174-04 (Soil)

PAH by 8270D SIM

Fluorene	ND	0.000286	0.00067	mg/Kg	1	L616483	05/17/2022	05/17/2022
Indeno(1,2,3-cd)pyrene	ND	0.000627	0.00067	"	"	"	"	"
Naphthalene	ND	0.000484	0.00067	"	"	"	"	"
Pyrene	ND	0.000643	0.00067	"	"	"	"	"

Surrogate: 2-Fluorobiphenyl	48.9 %	33-115	"	"	"
Surrogate: 4-Terphenyl-d14	62.8 %	33-122	"	"	"
Surrogate: Nitrobenzene-d5	55.9 %	29-110	"	"	"

pH in Soil by 9045D

pH	8.51	pH Units	1	B2E1010	05/10/2022	05/11/2022
----	------	----------	---	---------	------------	------------

SAR by 20B Saturated Paste

SAR	1.47	SAR	1	B2E1009	05/10/2022	05/11/2022
-----	------	-----	---	---------	------------	------------

Specific Conductance Mod. 9050A

Specific Conductance (EC)	0.285	0.00500	mmhos/cm	1	B2E1010	05/10/2022	05/11/2022
---------------------------	-------	---------	----------	---	---------	------------	------------

Origins Laboratory, Inc.



The results in this report apply to the samples analyzed in accordance with the chain of custody document. This analytical report must be reproduced in its entirety.

Jen Pellegrini For Noelle Doyle Mathis, President

Eagle Environmental Consulting, Inc.
8000 W 44th Ave
Wheat Ridge CO 80033

Martin C Eckert III
Project Number: [none]
Project: Bonanza - Janssen 8-G Pad

SS-05@0-0.25'
5/6/2022 10:35:00AM

Analyte	Result	Min Detection Limit	Reporting Limit	Units	Dilution	Batch	Prepared	Analyzed	Notes
---------	--------	---------------------	-----------------	-------	----------	-------	----------	----------	-------

Origins Laboratory, Inc.
Y205174-05 (Soil)

Boron (DTPA Sorbitol)

Boron	0.448	0.102	mg/L	1	B2E1011	05/10/2022	05/11/2022	
-------	-------	-------	------	---	---------	------------	------------	--

DRO/ORO by EPA 8015D

Diesel (C10-C28)	30.7	25.0	mg/kg	1	B2E1004	05/10/2022	05/16/2022	
Residual Range Organics (C28-C40)	ND	100	"	"	"	"	"	U

Surrogate: o-Terphenyl	99.5 %	50-150			"	"	"	
------------------------	--------	--------	--	--	---	---	---	--

GBTEX+TMBs by 8260D

1,2,4-Trimethylbenzene	ND	0.00200	mg/kg	1	B2E0916	05/09/2022	05/09/2022	U
1,3,5-Trimethylbenzene	ND	0.00200	"	"	"	"	"	U
Benzene	ND	0.00200	"	"	"	"	"	U
Ethylbenzene	ND	0.00200	"	"	"	"	"	U
Toluene	ND	0.00200	"	"	"	"	"	U
Xylenes, total	ND	0.00200	"	"	"	"	"	U
Gasoline Range Hydrocarbons	ND	0.200	"	"	"	"	"	U

Surrogate: 1,2-Dichloroethane-d4	111 %	70-130			"	"	"	
Surrogate: Toluene-d8	97.9 %	70-130			"	"	"	

Origins Laboratory, Inc.



The results in this report apply to the samples analyzed in accordance with the chain of custody document. This analytical report must be reproduced in its entirety.

Jen Pellegrini For Noelle Doyle Mathis, President

Eagle Environmental Consulting, Inc.
8000 W 44th Ave
Wheat Ridge CO 80033

Martin C Eckert III
Project Number: [none]
Project: Bonanza - Janssen 8-G Pad

SS-05@0-0.25'

5/6/2022 10:35:00AM

Analyte	Result	Min Detection Limit	Reporting Limit	Units	Dilution	Batch	Prepared	Analyzed	Notes
---------	--------	---------------------	-----------------	-------	----------	-------	----------	----------	-------

Origins Laboratory, Inc.
Y205174-05 (Soil)

GBTEX+TMBs by 8260D

Surrogate: 4-Bromofluorobenzene	99.7 %	70-130	B2E09 16	05/09/2022	05/09/2022
---------------------------------	--------	--------	-------------	------------	------------

Metals by Saturated Paste by EPA 6010

Calcium	1.22	0.499	meq/L	10	[CALC]	05/10/2022	05/11/2022
Magnesium	ND	0.823	"	"	"	"	"
Sodium	1.51	0.435	"	"	"	"	"

PAH by 8270D SIM

1-Methylnaphthalene	ND	0.000364	0.00067	mg/Kg	1	L616483	05/17/2022	05/17/2022
2-Methylnaphthalene	ND	0.000645	0.00067	"	"	"	"	"
Acenaphthene	ND	0.000304	0.00067	"	"	"	"	"
Anthracene	ND	0.000334	0.00067	"	"	"	"	"
Benzo(a)anthracene	ND	0.000493	0.00067	"	"	"	"	"
Benzo(a)pyrene	0.00053	0.000468	0.00067	"	"	"	"	" J
Benzo(b)fluoranthene	ND	0.000585	0.00067	"	"	"	"	"
Benzo(k)fluoranthene	0.000794	0.000437	0.00067	"	"	"	"	"
Chrysene	ND	0.000624	0.00067	"	"	"	"	"
Dibenz(a,h)anthracene	ND	0.000614	0.00067	"	"	"	"	"
Fluoranthene	0.000798	0.000394	0.00067	"	"	"	"	"
Fluorene	ND	0.000286	0.00067	"	"	"	"	"

Origins Laboratory, Inc.



The results in this report apply to the samples analyzed in accordance with the chain of custody document. This analytical report must be reproduced in its entirety.

Jen Pellegrini For Noelle Doyle Mathis, President

Eagle Environmental Consulting, Inc.
8000 W 44th Ave
Wheat Ridge CO 80033

Martin C Eckert III
Project Number: [none]
Project: Bonanza - Janssen 8-G Pad

SS-05@0-0.25'
5/6/2022 10:35:00AM

Analyte	Result	Min Detection Limit	Reporting Limit	Units	Dilution	Batch	Prepared	Analyzed	Notes
---------	--------	---------------------	-----------------	-------	----------	-------	----------	----------	-------

Waypoint Analytical, Inc.
Y205174-05 (Soil)

PAH by 8270D SIM

Indeno(1,2,3-cd)pyrene	ND	0.000627	0.00067	mg/Kg	1	L616483	05/17/2022	05/17/2022
Naphthalene	ND	0.000484	0.00067	"	"	"	"	"
Pyrene	0.000993	0.000643	0.00067	"	"	"	"	"

Surrogate: 2-Fluorobiphenyl	51.5 %	33-115	"	"	"
Surrogate: 4-Terphenyl-d14	67.7 %	33-122	"	"	"
Surrogate: Nitrobenzene-d5	58.8 %	29-110	"	"	"

pH in Soil by 9045D

pH	8.48	pH Units	1	B2E1010	05/10/2022	05/11/2022
----	------	----------	---	---------	------------	------------

SAR by 20B Saturated Paste

SAR	1.63	SAR	1	B2E1009	05/10/2022	05/11/2022
-----	------	-----	---	---------	------------	------------

Specific Conductance Mod. 9050A

Specific Conductance (EC)	0.362	0.00500	mmhos/cm	1	B2E1010	05/10/2022	05/11/2022
---------------------------	-------	---------	----------	---	---------	------------	------------

Origins Laboratory, Inc.



The results in this report apply to the samples analyzed in accordance with the chain of custody document. This analytical report must be reproduced in its entirety.

Jen Pellegrini For Noelle Doyle Mathis, President

Eagle Environmental Consulting, Inc.
8000 W 44th Ave
Wheat Ridge CO 80033

Martin C Eckert III
Project Number: [none]
Project: Bonanza - Janssen 8-G Pad

SS-06@0-0.25'
5/6/2022 10:40:00AM

Analyte	Result	Min Detection Limit	Reporting Limit	Units	Dilution	Batch	Prepared	Analyzed	Notes
---------	--------	---------------------	-----------------	-------	----------	-------	----------	----------	-------

Origins Laboratory, Inc.
Y205174-06 (Soil)

Boron (DTPA Sorbitol)

Boron	0.418	0.0995	mg/L	1	B2E1011	05/10/2022	05/11/2022	
-------	-------	--------	------	---	---------	------------	------------	--

DRO/ORO by EPA 8015D

Diesel (C10-C28)	ND	25.0	mg/kg	1	B2E1004	05/10/2022	05/16/2022	U
Residual Range Organics (C28-C40)	ND	100	"	"	"	"	"	U

Surrogate: o-Terphenyl	83.1 %	50-150			"	"	"	
------------------------	--------	--------	--	--	---	---	---	--

GBTEX+TMBs by 8260D

1,2,4-Trimethylbenzene	ND	0.00200	mg/kg	1	B2E0916	05/09/2022	05/09/2022	U
1,3,5-Trimethylbenzene	ND	0.00200	"	"	"	"	"	U
Benzene	ND	0.00200	"	"	"	"	"	U
Ethylbenzene	ND	0.00200	"	"	"	"	"	U
Toluene	ND	0.00200	"	"	"	"	"	U
Xylenes, total	ND	0.00200	"	"	"	"	"	U
Gasoline Range Hydrocarbons	ND	0.200	"	"	"	"	"	U

Surrogate: 1,2-Dichloroethane-d4	110 %	70-130			"	"	"	
----------------------------------	-------	--------	--	--	---	---	---	--

Origins Laboratory, Inc.



The results in this report apply to the samples analyzed in accordance with the chain of custody document. This analytical report must be reproduced in its entirety.

Jen Pellegrini For Noelle Doyle Mathis, President

Eagle Environmental Consulting, Inc.
8000 W 44th Ave
Wheat Ridge CO 80033

Martin C Eckert III
Project Number: [none]
Project: Bonanza - Janssen 8-G Pad

SS-06@0-0.25'
5/6/2022 10:40:00AM

Analyte	Result	Min Detection Limit	Reporting Limit	Units	Dilution	Batch	Prepared	Analyzed	Notes
---------	--------	---------------------	-----------------	-------	----------	-------	----------	----------	-------

Origins Laboratory, Inc.
Y205174-06 (Soil)

GBTEX+TMBs by 8260D

Surrogate: Toluene-d8	98.5 %	70-130	B2E09 16	05/09/2022	05/09/2022
Surrogate: 4-Bromofluorobenzene	102 %	70-130	"	"	"

Metals by Saturated Paste by EPA 6010

Calcium	1.24	0.499	meq/L	10	[CALC]	05/10/2022	05/11/2022
Magnesium	ND	0.823	"	"	"	"	"
Sodium	1.47	0.435	"	"	"	"	"

PAH by 8270D SIM

1-Methylnaphthalene	ND	0.000364	0.00067	mg/Kg	1	L616483	05/17/2022	05/17/2022
2-Methylnaphthalene	ND	0.000645	0.00067	"	"	"	"	"
Acenaphthene	ND	0.000304	0.00067	"	"	"	"	"
Anthracene	ND	0.000334	0.00067	"	"	"	"	"
Benzo(a)anthracene	ND	0.000493	0.00067	"	"	"	"	"
Benzo(a)pyrene	ND	0.000468	0.00067	"	"	"	"	"
Benzo(b)fluoranthene	ND	0.000585	0.00067	"	"	"	"	"
Benzo(k)fluoranthene	0.000529	0.000437	0.00067	"	"	"	"	" J
Chrysene	ND	0.000624	0.00067	"	"	"	"	"
Dibenz(a,h)anthracene	ND	0.000614	0.00067	"	"	"	"	"
Fluoranthene	ND	0.000394	0.00067	"	"	"	"	"

Origins Laboratory, Inc.



The results in this report apply to the samples analyzed in accordance with the chain of custody document. This analytical report must be reproduced in its entirety.

Jen Pellegrini For Noelle Doyle Mathis, President

Eagle Environmental Consulting, Inc.
8000 W 44th Ave
Wheat Ridge CO 80033

Martin C Eckert III
Project Number: [none]
Project: Bonanza - Janssen 8-G Pad

SS-06@0-0.25'
5/6/2022 10:40:00AM

Analyte	Result	Min Detection Limit	Reporting Limit	Units	Dilution	Batch	Prepared	Analyzed	Notes
---------	--------	---------------------	-----------------	-------	----------	-------	----------	----------	-------

Waypoint Analytical, Inc.
Y205174-06 (Soil)

PAH by 8270D SIM

Fluorene	ND	0.000286	0.00067	mg/Kg	1	L616483	05/17/2022	05/17/2022
Indeno(1,2,3-cd)pyrene	ND	0.000627	0.00067	"	"	"	"	"
Naphthalene	ND	0.000484	0.00067	"	"	"	"	"
Pyrene	ND	0.000643	0.00067	"	"	"	"	"

Surrogate: 2-Fluorobiphenyl	52.7 %	33-115	"	"	"
Surrogate: 4-Terphenyl-d14	66 %	33-122	"	"	"
Surrogate: Nitrobenzene-d5	60.5 %	29-110	"	"	"

pH in Soil by 9045D

pH	8.47	pH Units	1	B2E1010	05/10/2022	05/11/2022
----	------	----------	---	---------	------------	------------

SAR by 20B Saturated Paste

SAR	1.56	SAR	1	B2E1009	05/10/2022	05/11/2022
-----	------	-----	---	---------	------------	------------

Specific Conductance Mod. 9050A

Specific Conductance (EC)	0.362	0.00500	mmhos/cm	1	B2E1010	05/10/2022	05/11/2022
---------------------------	-------	---------	----------	---	---------	------------	------------

Origins Laboratory, Inc.



The results in this report apply to the samples analyzed in accordance with the chain of custody document. This analytical report must be reproduced in its entirety.

Jen Pellegrini For Noelle Doyle Mathis, President

Eagle Environmental Consulting, Inc.
8000 W 44th Ave
Wheat Ridge CO 80033

Martin C Eckert III
Project Number: [none]
Project: Bonanza - Janssen 8-G Pad

SS-07@0-0.25'
5/6/2022 10:45:00AM

Analyte	Result	Min Detection Limit	Reporting Limit	Units	Dilution	Batch	Prepared	Analyzed	Notes
---------	--------	---------------------	-----------------	-------	----------	-------	----------	----------	-------

Origins Laboratory, Inc.
Y205174-07 (Soil)

Boron (DTPA Sorbitol)

Boron	0.325	0.102	mg/L	1	B2E1011	05/10/2022	05/11/2022	
-------	-------	-------	------	---	---------	------------	------------	--

DRO/ORO by EPA 8015D

Diesel (C10-C28)	ND	25.0	mg/kg	1	B2E1004	05/10/2022	05/16/2022	U
Residual Range Organics (C28-C40)	ND	100	"	"	"	"	"	U

Surrogate: o-Terphenyl	91.8 %	50-150			"	"	"
------------------------	--------	--------	--	--	---	---	---

GBTEX+TMBs by 8260D

1,2,4-Trimethylbenzene	ND	0.00200	mg/kg	1	B2E0916	05/09/2022	05/09/2022	U
1,3,5-Trimethylbenzene	ND	0.00200	"	"	"	"	"	U
Benzene	ND	0.00200	"	"	"	"	"	U
Ethylbenzene	ND	0.00200	"	"	"	"	"	U
Toluene	ND	0.00200	"	"	"	"	"	U
Xylenes, total	ND	0.00200	"	"	"	"	"	U
Gasoline Range Hydrocarbons	ND	0.200	"	"	"	"	"	U

Surrogate: 1,2-Dichloroethane-d4	110 %	70-130			"	"	"
----------------------------------	-------	--------	--	--	---	---	---

Origins Laboratory, Inc.



The results in this report apply to the samples analyzed in accordance with the chain of custody document. This analytical report must be reproduced in its entirety.

Jen Pellegrini For Noelle Doyle Mathis, President

Eagle Environmental Consulting, Inc.
8000 W 44th Ave
Wheat Ridge CO 80033

Martin C Eckert III
Project Number: [none]
Project: Bonanza - Janssen 8-G Pad

SS-07@0-0.25'
5/6/2022 10:45:00AM

Analyte	Result	Min Detection Limit	Reporting Limit	Units	Dilution	Batch	Prepared	Analyzed	Notes
---------	--------	---------------------	-----------------	-------	----------	-------	----------	----------	-------

Origins Laboratory, Inc.
Y205174-07 (Soil)

GBTEX+TMBs by 8260D

Surrogate: Toluene-d8	99.3 %	70-130	B2E09 16	05/09/2022	05/09/2022
Surrogate: 4-Bromofluorobenzene	103 %	70-130	"	"	"

Metals by Saturated Paste by EPA 6010

Calcium	1.87	0.499	meq/L	10	[CALC]	05/10/2022	05/11/2022
Magnesium	ND	0.823	"	"	"	"	"
Sodium	0.966	0.435	"	"	"	"	"

PAH by 8270D SIM

1-Methylnaphthalene	ND	0.000364	0.00067	mg/Kg	1	L616483	05/17/2022	05/17/2022
2-Methylnaphthalene	ND	0.000645	0.00067	"	"	"	"	"
Acenaphthene	ND	0.000304	0.00067	"	"	"	"	"
Anthracene	ND	0.000334	0.00067	"	"	"	"	"
Benzo(a)anthracene	ND	0.000493	0.00067	"	"	"	"	"
Benzo(a)pyrene	ND	0.000468	0.00067	"	"	"	"	"
Benzo(b)fluoranthene	ND	0.000585	0.00067	"	"	"	"	"
Benzo(k)fluoranthene	0.000934	0.000437	0.00067	"	"	"	"	"
Chrysene	ND	0.000624	0.00067	"	"	"	"	"
Dibenz(a,h)anthracene	ND	0.000614	0.00067	"	"	"	"	"
Fluoranthene	ND	0.000394	0.00067	"	"	"	"	"

Origins Laboratory, Inc.



The results in this report apply to the samples analyzed in accordance with the chain of custody document. This analytical report must be reproduced in its entirety.

Jen Pellegrini For Noelle Doyle Mathis, President

Eagle Environmental Consulting, Inc.
8000 W 44th Ave
Wheat Ridge CO 80033

Martin C Eckert III
Project Number: [none]
Project: Bonanza - Janssen 8-G Pad

SS-07@0-0.25'
5/6/2022 10:45:00AM

Analyte	Result	Min Detection Limit	Reporting Limit	Units	Dilution	Batch	Prepared	Analyzed	Notes
---------	--------	---------------------	-----------------	-------	----------	-------	----------	----------	-------

Waypoint Analytical, Inc.
Y205174-07 (Soil)

PAH by 8270D SIM

Fluorene	ND	0.000286	0.00067	mg/Kg	1	L616483	05/17/2022	05/17/2022
Indeno(1,2,3-cd)pyrene	ND	0.000627	0.00067	"	"	"	"	"
Naphthalene	ND	0.000484	0.00067	"	"	"	"	"
Pyrene	ND	0.000643	0.00067	"	"	"	"	"

Surrogate: 2-Fluorobiphenyl	53.4 %	33-115	"	"	"
Surrogate: 4-Terphenyl-d14	69 %	33-122	"	"	"
Surrogate: Nitrobenzene-d5	60.4 %	29-110	"	"	"

pH in Soil by 9045D

pH	8.49	pH Units	1	B2E1010	05/10/2022	05/11/2022
----	------	----------	---	---------	------------	------------

SAR by 20B Saturated Paste

SAR	0.843	SAR	1	B2E1009	05/10/2022	05/11/2022
-----	-------	-----	---	---------	------------	------------

Specific Conductance Mod. 9050A

Specific Conductance (EC)	0.395	0.00500	mmhos/cm	1	B2E1010	05/10/2022	05/11/2022
---------------------------	-------	---------	----------	---	---------	------------	------------

Origins Laboratory, Inc.



The results in this report apply to the samples analyzed in accordance with the chain of custody document. This analytical report must be reproduced in its entirety.

Jen Pellegrini For Noelle Doyle Mathis, President

Eagle Environmental Consulting, Inc.
8000 W 44th Ave
Wheat Ridge CO 80033

Martin C Eckert III
Project Number: [none]
Project: Bonanza - Janssen 8-G Pad

SS-08@0-0.25'
5/6/2022 10:50:00AM

Analyte	Result	Min Detection Limit	Reporting Limit	Units	Dilution	Batch	Prepared	Analyzed	Notes
---------	--------	---------------------	-----------------	-------	----------	-------	----------	----------	-------

Origins Laboratory, Inc.
Y205174-08 (Soil)

Boron (DTPA Sorbitol)

Boron	0.338	0.0993	mg/L	1	B2E1011	05/10/2022	05/11/2022	
-------	-------	--------	------	---	---------	------------	------------	--

DRO/ORO by EPA 8015D

Diesel (C10-C28)	ND	25.0	mg/kg	1	B2E1004	05/10/2022	05/16/2022	U
Residual Range Organics (C28-C40)	ND	100	"	"	"	"	"	U

Surrogate: o-Terphenyl	108 %	50-150			"	"	"	
------------------------	-------	--------	--	--	---	---	---	--

GBTEX+TMBs by 8260D

1,2,4-Trimethylbenzene	ND	0.00200	mg/kg	1	B2E0916	05/09/2022	05/09/2022	U
1,3,5-Trimethylbenzene	ND	0.00200	"	"	"	"	"	U
Benzene	ND	0.00200	"	"	"	"	"	U
Ethylbenzene	ND	0.00200	"	"	"	"	"	U
Toluene	ND	0.00200	"	"	"	"	"	U
Xylenes, total	ND	0.00200	"	"	"	"	"	U
Gasoline Range Hydrocarbons	ND	0.200	"	"	"	"	"	U

Surrogate: 1,2-Dichloroethane-d4	114 %	70-130			"	"	"	
----------------------------------	-------	--------	--	--	---	---	---	--

Origins Laboratory, Inc.



The results in this report apply to the samples analyzed in accordance with the chain of custody document. This analytical report must be reproduced in its entirety.

Jen Pellegrini For Noelle Doyle Mathis, President

Eagle Environmental Consulting, Inc.
8000 W 44th Ave
Wheat Ridge CO 80033

Martin C Eckert III
Project Number: [none]
Project: Bonanza - Janssen 8-G Pad

SS-08@0-0.25'
5/6/2022 10:50:00AM

Analyte	Result	Min Detection Limit	Reporting Limit	Units	Dilution	Batch	Prepared	Analyzed	Notes
---------	--------	---------------------	-----------------	-------	----------	-------	----------	----------	-------

Origins Laboratory, Inc.
Y205174-08 (Soil)

GBTEX+TMBs by 8260D

Surrogate: Toluene-d8	93.3 %	70-130	B2E09 16	05/09/2022	05/09/2022
Surrogate: 4-Bromofluorobenzene	101 %	70-130	"	"	"

Metals by Saturated Paste by EPA 6010

Calcium	1.78	0.499	meq/L	10	[CALC]	05/10/2022	05/11/2022
Magnesium	ND	0.823	"	"	"	"	"
Sodium	0.909	0.435	"	"	"	"	"

PAH by 8270D SIM

1-Methylnaphthalene	ND	0.000364	0.00067	mg/Kg	1	L616483	05/17/2022	05/17/2022
2-Methylnaphthalene	ND	0.000645	0.00067	"	"	"	"	"
Acenaphthene	ND	0.000304	0.00067	"	"	"	"	"
Anthracene	ND	0.000334	0.00067	"	"	"	"	"
Benzo(a)anthracene	ND	0.000493	0.00067	"	"	"	"	"
Benzo(a)pyrene	ND	0.000468	0.00067	"	"	"	"	"
Benzo(b)fluoranthene	ND	0.000585	0.00067	"	"	"	"	"
Benzo(k)fluoranthene	0.000458	0.000437	0.00067	"	"	"	"	" J
Chrysene	ND	0.000624	0.00067	"	"	"	"	"
Dibenz(a,h)anthracene	ND	0.000614	0.00067	"	"	"	"	"
Fluoranthene	ND	0.000394	0.00067	"	"	"	"	"

Origins Laboratory, Inc.



The results in this report apply to the samples analyzed in accordance with the chain of custody document. This analytical report must be reproduced in its entirety.

Jen Pellegrini For Noelle Doyle Mathis, President

Eagle Environmental Consulting, Inc.
8000 W 44th Ave
Wheat Ridge CO 80033

Martin C Eckert III
Project Number: [none]
Project: Bonanza - Janssen 8-G Pad

SS-08@0-0.25'
5/6/2022 10:50:00AM

Analyte	Result	Min Detection Limit	Reporting Limit	Units	Dilution	Batch	Prepared	Analyzed	Notes
---------	--------	---------------------	-----------------	-------	----------	-------	----------	----------	-------

Waypoint Analytical, Inc.
Y205174-08 (Soil)

PAH by 8270D SIM

Fluorene	ND	0.000286	0.00067	mg/Kg	1	L616483	05/17/2022	05/17/2022
Indeno(1,2,3-cd)pyrene	ND	0.000627	0.00067	"	"	"	"	"
Naphthalene	ND	0.000484	0.00067	"	"	"	"	"
Pyrene	ND	0.000643	0.00067	"	"	"	"	"

Surrogate: 2-Fluorobiphenyl	51.2 %	33-115	"	"	"
Surrogate: 4-Terphenyl-d14	67 %	33-122	"	"	"
Surrogate: Nitrobenzene-d5	58.2 %	29-110	"	"	"

pH in Soil by 9045D

pH	8.48	pH Units	1	B2E1010	05/10/2022	05/11/2022
----	------	----------	---	---------	------------	------------

SAR by 20B Saturated Paste

SAR	0.812	SAR	1	B2E1009	05/10/2022	05/11/2022
-----	-------	-----	---	---------	------------	------------

Specific Conductance Mod. 9050A

Specific Conductance (EC)	0.372	0.00500	mmhos/cm	1	B2E1010	05/10/2022	05/11/2022
---------------------------	-------	---------	----------	---	---------	------------	------------

Origins Laboratory, Inc.



The results in this report apply to the samples analyzed in accordance with the chain of custody document. This analytical report must be reproduced in its entirety.

Jen Pellegrini For Noelle Doyle Mathis, President

Eagle Environmental Consulting, Inc.
8000 W 44th Ave
Wheat Ridge CO 80033

Martin C Eckert III
Project Number: [none]
Project: Bonanza - Janssen 8-G Pad

SS-09@0-0.25'
5/6/2022 10:55:00AM

Analyte	Result	Min Detection Limit	Reporting Limit	Units	Dilution	Batch	Prepared	Analyzed	Notes
---------	--------	---------------------	-----------------	-------	----------	-------	----------	----------	-------

Origins Laboratory, Inc.
Y205174-09 (Soil)

Boron (DTPA Sorbitol)

Boron	0.321	0.100	mg/L	1	B2E1011	05/10/2022	05/11/2022	
-------	-------	-------	------	---	---------	------------	------------	--

DRO/ORO by EPA 8015D

Diesel (C10-C28)	ND	25.0	mg/kg	1	B2E1004	05/10/2022	05/13/2022	U
Residual Range Organics (C28-C40)	ND	100	"	"	"	"	05/16/2022	U

Surrogate: o-Terphenyl	94.1 %	50-150			"	"	"	
------------------------	--------	--------	--	--	---	---	---	--

GBTEX+TMBs by 8260D

1,2,4-Trimethylbenzene	ND	0.00200	mg/kg	1	B2E0916	05/09/2022	05/09/2022	U
1,3,5-Trimethylbenzene	ND	0.00200	"	"	"	"	"	U
Benzene	ND	0.00200	"	"	"	"	"	U
Ethylbenzene	ND	0.00200	"	"	"	"	"	U
Toluene	ND	0.00200	"	"	"	"	"	U
Xylenes, total	ND	0.00200	"	"	"	"	"	U
Gasoline Range Hydrocarbons	ND	0.200	"	"	"	"	"	U

Surrogate: 1,2-Dichloroethane-d4	111 %	70-130			"	"	"	
----------------------------------	-------	--------	--	--	---	---	---	--

Origins Laboratory, Inc.



The results in this report apply to the samples analyzed in accordance with the chain of custody document. This analytical report must be reproduced in its entirety.

Jen Pellegrini For Noelle Doyle Mathis, President

Eagle Environmental Consulting, Inc.
8000 W 44th Ave
Wheat Ridge CO 80033

Martin C Eckert III
Project Number: [none]
Project: Bonanza - Janssen 8-G Pad

SS-09@0-0.25'

5/6/2022 10:55:00AM

Analyte	Result	Min Detection Limit	Reporting Limit	Units	Dilution	Batch	Prepared	Analyzed	Notes
---------	--------	---------------------	-----------------	-------	----------	-------	----------	----------	-------

Origins Laboratory, Inc.
Y205174-09 (Soil)

GBTEX+TMBs by 8260D

Surrogate: Toluene-d8	98.0 %	70-130	B2E09 16	05/09/2022	05/09/2022
Surrogate: 4-Bromofluorobenzene	102 %	70-130	"	"	"

Metals by Saturated Paste by EPA 6010

Calcium	1.95	0.499	meq/L	10	[CALC]	05/10/2022	05/11/2022
Magnesium	ND	0.823	"	"	"	"	"
Sodium	0.896	0.435	"	"	"	"	"

PAH by 8270D SIM

1-Methylnaphthalene	ND	0.000364	0.00067	mg/Kg	1	L616483	05/17/2022	05/17/2022
2-Methylnaphthalene	ND	0.000645	0.00067	"	"	"	"	"
Acenaphthene	ND	0.000304	0.00067	"	"	"	"	"
Anthracene	ND	0.000334	0.00067	"	"	"	"	"
Benzo(a)anthracene	ND	0.000493	0.00067	"	"	"	"	"
Benzo(a)pyrene	ND	0.000468	0.00067	"	"	"	"	"
Benzo(b)fluoranthene	ND	0.000585	0.00067	"	"	"	"	"
Benzo(k)fluoranthene	0.000629	0.000437	0.00067	"	"	"	"	" J
Chrysene	ND	0.000624	0.00067	"	"	"	"	"
Dibenz(a,h)anthracene	ND	0.000614	0.00067	"	"	"	"	"
Fluoranthene	ND	0.000394	0.00067	"	"	"	"	"

Origins Laboratory, Inc.



The results in this report apply to the samples analyzed in accordance with the chain of custody document. This analytical report must be reproduced in its entirety.

Jen Pellegrini For Noelle Doyle Mathis, President

Eagle Environmental Consulting, Inc.
8000 W 44th Ave
Wheat Ridge CO 80033

Martin C Eckert III
Project Number: [none]
Project: Bonanza - Janssen 8-G Pad

SS-09@0-0.25'
5/6/2022 10:55:00AM

Analyte	Result	Min Detection Limit	Reporting Limit	Units	Dilution	Batch	Prepared	Analyzed	Notes
---------	--------	---------------------	-----------------	-------	----------	-------	----------	----------	-------

Waypoint Analytical, Inc.
Y205174-09 (Soil)

PAH by 8270D SIM

Fluorene	ND	0.000286	0.00067	mg/Kg	1	L616483	05/17/2022	05/17/2022
Indeno(1,2,3-cd)pyrene	ND	0.000627	0.00067	"	"	"	"	"
Naphthalene	ND	0.000484	0.00067	"	"	"	"	"
Pyrene	ND	0.000643	0.00067	"	"	"	"	"

Surrogate: 2-Fluorobiphenyl	50.6 %	33-115	"	"	"
Surrogate: 4-Terphenyl-d14	65 %	33-122	"	"	"
Surrogate: Nitrobenzene-d5	57.7 %	29-110	"	"	"

pH in Soil by 9045D

pH	8.43	pH Units	1	B2E1010	05/10/2022	05/11/2022
----	------	----------	---	---------	------------	------------

SAR by 20B Saturated Paste

SAR	0.773	SAR	1	B2E1009	05/10/2022	05/11/2022
-----	-------	-----	---	---------	------------	------------

Specific Conductance Mod. 9050A

Specific Conductance (EC)	0.368	0.00500	mmhos/cm	1	B2E1010	05/10/2022	05/11/2022
---------------------------	-------	---------	----------	---	---------	------------	------------

Origins Laboratory, Inc.



The results in this report apply to the samples analyzed in accordance with the chain of custody document. This analytical report must be reproduced in its entirety.

Jen Pellegrini For Noelle Doyle Mathis, President

Eagle Environmental Consulting, Inc.
8000 W 44th Ave
Wheat Ridge CO 80033

Martin C Eckert III
Project Number: [none]
Project: Bonanza - Janssen 8-G Pad

Volatile Organic Compounds by GC/MS SW846 8260D - Quality Control
Origins Laboratory, Inc.

Analyte	Result	Reporting Limit	Units	Spike Level	Source Result	%REC	%REC Limits	RPD	RPD Limit	Notes
Batch B2E0916 - EPA 5030 (soil)										
Blank (B2E0916-BLK1)					Prepared: 05/09/2022 Analyzed: 05/09/2022					
1,2,4-Trimethylbenzene	ND	0.00200	mg/kg							U
1,3,5-Trimethylbenzene	ND	0.00200	"							U
Benzene	ND	0.00200	"							U
Ethylbenzene	ND	0.00200	"							U
Naphthalene	ND	0.0100	"							U
Toluene	ND	0.00200	"							U
Xylenes, total	ND	0.00200	"							U
Gasoline Range Hydrocarbons	ND	0.200	"							U
Surrogate: 1,2-Dichloroethane-d4	0.14		"	0.125	108		70-130			
Surrogate: Toluene-d8	0.13		"	0.125	101		70-130			
Surrogate: 4-Bromofluorobenzene	0.12		"	0.125	98.8		70-130			

Origins Laboratory, Inc.



Jen Pellegrini For Noelle Doyle Mathis, President

The results in this report apply to the samples analyzed in accordance with the chain of custody document. This analytical report must be reproduced in its entirety.

Eagle Environmental Consulting, Inc.
8000 W 44th Ave
Wheat Ridge CO 80033

Martin C Eckert III
Project Number: [none]
Project: Bonanza - Janssen 8-G Pad

Volatile Organic Compounds by GC/MS SW846 8260D - Quality Control
Origins Laboratory, Inc.

Analyte	Result	Reporting Limit	Units	Spike Level	Source Result	%REC	%REC Limits	RPD	RPD Limit	Notes
Batch B2E0916 - EPA 5030 (soil)										
LCS (B2E0916-BS1)					Prepared: 05/09/2022 Analyzed: 05/09/2022					
1,2,4-Trimethylbenzene	0.100	0.00200	mg/kg	0.100		100	70-130			
1,3,5-Trimethylbenzene	0.0997	0.00200	"	0.100		99.7	70-130			
Benzene	0.104	0.00200	"	0.100		104	70-130			
Ethylbenzene	0.0989	0.00200	"	0.100		98.9	70-130			
Naphthalene	0.0972	0.0100	"	0.100		97.2	70-130			
Toluene	0.101	0.00200	"	0.100		101	70-130			
o-Xylene	0.0981	0.00200	"	0.100		98.1	70-130			
m,p-Xylene	0.198	0.00400	"	0.200		99.0	70-130			
Surrogate: 1,2-Dichloroethane-d4	0.13		"	0.125		105	70-130			
Surrogate: Toluene-d8	0.12		"	0.125		92.2	70-130			
Surrogate: 4-Bromofluorobenzene	0.13		"	0.125		103	70-130			

Origins Laboratory, Inc.



Jen Pellegrini For Noelle Doyle Mathis, President

The results in this report apply to the samples analyzed in accordance with the chain of custody document. This analytical report must be reproduced in its entirety.

Eagle Environmental Consulting, Inc.
8000 W 44th Ave
Wheat Ridge CO 80033

Martin C Eckert III
Project Number: [none]
Project: Bonanza - Janssen 8-G Pad

Volatile Organic Compounds by GC/MS SW846 8260D - Quality Control
Origins Laboratory, Inc.

Analyte	Result	Reporting Limit	Units	Spike Level	Source Result	%REC	%REC Limits	RPD	RPD Limit	Notes
---------	--------	-----------------	-------	-------------	---------------	------	-------------	-----	-----------	-------

Batch B2E0916 - EPA 5030 (soil)

Matrix Spike (B2E0916-MS1)		Source: Y205174-01			Prepared: 05/09/2022 Analyzed: 05/09/2022					
1,2,4-Trimethylbenzene	0.0993	0.00200	mg/kg	0.100	ND	99.3	70-130			
1,3,5-Trimethylbenzene	0.0992	0.00200	"	0.100	ND	99.2	70-130			
Benzene	0.105	0.00200	"	0.100	ND	105	70-130			
Ethylbenzene	0.100	0.00200	"	0.100	ND	100	70-130			
Naphthalene	0.0997	0.0100	"	0.100	ND	99.7	70-130			
Toluene	0.106	0.00200	"	0.100	ND	106	70-130			
o-Xylene	0.101	0.00200	"	0.100	ND	101	70-130			
m,p-Xylene	0.202	0.00400	"	0.200	ND	101	70-130			
Surrogate: 1,2-Dichloroethane-d4	0.14		"	0.125		111	70-130			
Surrogate: Toluene-d8	0.12		"	0.125		95.4	70-130			
Surrogate: 4-Bromofluorobenzene	0.13		"	0.125		104	70-130			

Origins Laboratory, Inc.



Jen Pellegrini For Noelle Doyle Mathis, President

The results in this report apply to the samples analyzed in accordance with the chain of custody document. This analytical report must be reproduced in its entirety.

Eagle Environmental Consulting, Inc.
8000 W 44th Ave
Wheat Ridge CO 80033

Martin C Eckert III
Project Number: [none]
Project: Bonanza - Janssen 8-G Pad

Volatile Organic Compounds by GC/MS SW846 8260D - Quality Control
Origins Laboratory, Inc.

Analyte	Result	Reporting Limit	Units	Spike Level	Source Result	%REC	%REC Limits	RPD	RPD Limit	Notes
Batch B2E0916 - EPA 5030 (soil)										
Matrix Spike Dup (B2E0916-MSD1)		Source: Y205174-01			Prepared: 05/09/2022 Analyzed: 05/09/2022					
1,2,4-Trimethylbenzene	0.0829	0.00200	mg/kg	0.100	ND	82.9	70-130	18.0	20	
1,3,5-Trimethylbenzene	0.0825	0.00200	"	0.100	ND	82.5	70-130	18.4	20	
Benzene	0.0909	0.00200	"	0.100	ND	90.9	70-130	14.1	20	
Ethylbenzene	0.0820	0.00200	"	0.100	ND	82.0	70-130	20.3	20	QM-07
Naphthalene	0.0852	0.0100	"	0.100	ND	85.2	70-130	15.8	20	
Toluene	0.0875	0.00200	"	0.100	ND	87.5	70-130	18.7	20	
o-Xylene	0.0830	0.00200	"	0.100	ND	83.0	70-130	19.3	20	
m,p-Xylene	0.165	0.00400	"	0.200	ND	82.7	70-130	20.0	20	
Surrogate: 1,2-Dichloroethane-d4	0.14		"	0.125		111	70-130			
Surrogate: Toluene-d8	0.12		"	0.125		93.0	70-130			
Surrogate: 4-Bromofluorobenzene	0.13		"	0.125		102	70-130			

Origins Laboratory, Inc.



Jen Pellegrini For Noelle Doyle Mathis, President

The results in this report apply to the samples analyzed in accordance with the chain of custody document. This analytical report must be reproduced in its entirety.

Eagle Environmental Consulting, Inc.
8000 W 44th Ave
Wheat Ridge CO 80033

Martin C Eckert III
Project Number: [none]
Project: Bonanza - Janssen 8-G Pad

Volatile Organic Compounds by GC/MS SW846 8260D - Quality Control
Origins Laboratory, Inc.

Analyte	Result	Reporting Limit	Units	Spike Level	Source Result	%REC	%REC Limits	RPD	RPD Limit	Notes
Batch B2E1004 - EPA 3580										
Blank (B2E1004-BLK1)					Prepared: 05/10/2022 Analyzed: 05/13/2022					
Diesel (C10-C28)	ND	25.0	mg/kg							U
Residual Range Organics (C28-C40)	ND	100	"							U
Surrogate: o-Terphenyl	27		"	24.9		109	50-150			

Origins Laboratory, Inc.



Jen Pellegrini For Noelle Doyle Mathis, President

The results in this report apply to the samples analyzed in accordance with the chain of custody document. This analytical report must be reproduced in its entirety.

Eagle Environmental Consulting, Inc.
8000 W 44th Ave
Wheat Ridge CO 80033

Martin C Eckert III
Project Number: [none]
Project: Bonanza - Janssen 8-G Pad

Extractable Petroleum Hydrocarbons by 8015D - Quality Control
Origins Laboratory, Inc.

Analyte	Result	Reporting Limit	Units	Spike Level	Source Result	%REC	%REC Limits	RPD	RPD Limit	Notes
---------	--------	-----------------	-------	-------------	---------------	------	-------------	-----	-----------	-------

Batch B2E1004 - EPA 3580

LCS (B2E1004-BS1)

Prepared: 05/10/2022 Analyzed: 05/13/2022

Diesel (C10-C28)	963	50.0	mg/kg	1000		96.3	70-130			
Residual Range Organics (C28-C40)	1130	200	"	1000		113	70-130			
Surrogate: o-Terphenyl	48		"	49.8		95.9	50-150			

Origins Laboratory, Inc.



Jen Pellegrini For Noelle Doyle Mathis, President

The results in this report apply to the samples analyzed in accordance with the chain of custody document. This analytical report must be reproduced in its entirety.

Eagle Environmental Consulting, Inc.
8000 W 44th Ave
Wheat Ridge CO 80033

Martin C Eckert III
Project Number: [none]
Project: Bonanza - Janssen 8-G Pad

Extractable Petroleum Hydrocarbons by 8015D - Quality Control Origins Laboratory, Inc.

Analyte	Result	Reporting Limit	Units	Spike Level	Source Result	%REC	%REC Limits	RPD	RPD Limit	Notes
---------	--------	-----------------	-------	-------------	---------------	------	-------------	-----	-----------	-------

Batch B2E1004 - EPA 3580

Matrix Spike (B2E1004-MS1)		Source: Y205174-01			Prepared: 05/10/2022 Analyzed: 05/13/2022					
Diesel (C10-C28)	979	50.0	mg/kg	1000	ND	97.9	70-130			
Residual Range Organics (C28-C40)	1130	200	"	1000	ND	113	70-130			
Surrogate: o-Terphenyl	47		"	49.8		93.7	50-150			

Origins Laboratory, Inc.



Jen Pellegrini For Noelle Doyle Mathis, President

The results in this report apply to the samples analyzed in accordance with the chain of custody document. This analytical report must be reproduced in its entirety.

Eagle Environmental Consulting, Inc.
8000 W 44th Ave
Wheat Ridge CO 80033

Martin C Eckert III
Project Number: [none]
Project: Bonanza - Janssen 8-G Pad

Extractable Petroleum Hydrocarbons by 8015D - Quality Control Origins Laboratory, Inc.

Analyte	Result	Reporting Limit	Units	Spike Level	Source Result	%REC	%REC Limits	RPD	RPD Limit	Notes
Batch B2E1004 - EPA 3580										
Matrix Spike Dup (B2E1004-MSD1)		Source: Y205174-01			Prepared: 05/10/2022 Analyzed: 05/13/2022					
Diesel (C10-C28)	840	50.0	mg/kg	1000	ND	84.0	70-130	15.3	35	
Residual Range Organics (C28-C40)	916	200	"	1000	ND	91.6	70-130	21.2	35	
Surrogate: o-Terphenyl	41		"	49.8		82.4	50-150			

Origins Laboratory, Inc.



Jen Pellegrini For Noelle Doyle Mathis, President

The results in this report apply to the samples analyzed in accordance with the chain of custody document. This analytical report must be reproduced in its entirety.

Eagle Environmental Consulting, Inc.
8000 W 44th Ave
Wheat Ridge CO 80033

Martin C Eckert III
Project Number: [none]
Project: Bonanza - Janssen 8-G Pad

Extractable Petroleum Hydrocarbons by 8015D - Quality Control

Origins Laboratory, Inc.

Analyte	Result	Reporting Limit	Units	Spike Level	Source Result	%REC	%REC Limits	RPD	RPD Limit	Notes
---------	--------	-----------------	-------	-------------	---------------	------	-------------	-----	-----------	-------

Classical Chemistry Parameters - Quality Control

Origins Laboratory, Inc.

Analyte	Result	Reporting Limit	Units	Spike Level	Source Result	%REC	%REC Limits	RPD	RPD Limit	Notes
---------	--------	-----------------	-------	-------------	---------------	------	-------------	-----	-----------	-------

Batch B2E1011 - Default Prep Metals

Blank (B2E1011-BLK1)

Prepared: 05/10/2022 Analyzed: 05/11/2022

Boron	ND	0.100	mg/L							U
-------	----	-------	------	--	--	--	--	--	--	---

Duplicate (B2E1011-DUP1)

Source: Y205174-01

Prepared: 05/10/2022 Analyzed: 05/11/2022

Boron	0.338	0.0995	mg/L		0.519			42.2	50	
-------	-------	--------	------	--	-------	--	--	------	----	--

Origins Laboratory, Inc.



Jen Pellegrini For Noelle Doyle Mathis, President

The results in this report apply to the samples analyzed in accordance with the chain of custody document. This analytical report must be reproduced in its entirety.

Eagle Environmental Consulting, Inc.
8000 W 44th Ave
Wheat Ridge CO 80033

Martin C Eckert III
Project Number: [none]
Project: Bonanza - Janssen 8-G Pad

Saturated Paste - Quality Control Origins Laboratory, Inc.

Analyte	Result	Reporting Limit	Units	Spike Level	Source Result	%REC	%REC Limits	RPD	RPD Limit	Notes
Batch B2E1010 - NO PREP										
Blank (B2E1010-BLK1)					Prepared: 05/10/2022 Analyzed: 05/11/2022					
pH	0.00		pH Units							U
Specific Conductance (EC)	ND	0.0300	mmhos/cm							U
Duplicate (B2E1010-DUP1)					Source: Y205164-08 Prepared: 05/10/2022 Analyzed: 05/11/2022					
Specific Conductance (EC)	0.982	0.0300	mmhos/cm		0.771			24.0	25	
pH	7.97		pH Units		8.22			3.09	25	

Origins Laboratory, Inc.



Jen Pellegrini For Noelle Doyle Mathis, President

The results in this report apply to the samples analyzed in accordance with the chain of custody document. This analytical report must be reproduced in its entirety.

Eagle Environmental Consulting, Inc.
8000 W 44th Ave
Wheat Ridge CO 80033

Martin C Eckert III
Project Number: [none]
Project: Bonanza - Janssen 8-G Pad

PAH by 8270D SIM - Quality Control
Waypoint Analytical, Inc.

Analyte	Result	Reporting Limit	Units	Spike Level	Source Result	%REC	%REC Limits	RPD	RPD Limit	Notes
---------	--------	-----------------	-------	-------------	---------------	------	-------------	-----	-----------	-------

Batch L616483 - 3550B

MSD (L 91162-MSD-L616483)		Source: 91162			Prepared: 05/17/2022 Analyzed: 05/17/2022					
Acenaphthene	0.0901	0.00152	mg/Kg	0.165	0.00167	53.5	30-130	17.6	30	
Fluorene	0.0824	0.00143	"	0.165	<0.00143	49.9	30-130	20.9	30	
Fluoranthene	0.0937	0.00197	"	0.165	<0.00197	56.7	30-130	6.9	30	
Dibenz(a,h)anthracene	0.0795	0.00307	"	0.165	<0.00307	48.1	30-130	7	30	
Chrysene	0.109	0.00312	"	0.165	<0.00312	66	30-130	11.6	30	
Benzo(k)fluoranthene	0.115	0.00219	"	0.165	0.00283	67.9	30-130	11	30	
Benzo(b)fluoranthene	0.0619	0.00293	"	0.165	<0.00293	37.5	30-130	25.7	30	
Benzo(a)anthracene	0.0893	0.00247	"	0.165	<0.00247	54.1	30-130	12.1	30	
Indeno(1,2,3-cd)pyrene	0.0494	0.00314	"	0.165	<0.00314	29.9	30-130	6.9	30	*
2-Methylnaphthalene	0.0773	0.00323	"	0.165	<0.00323	46.8	30-130	26.8	30	
1-Methylnaphthalene	0.107	0.00182	"	0.165	<0.00182	64.8	30-130	12.6	30	
Anthracene	0.0977	0.00167	"	0.165	<0.00167	59.2	30-130	7.3	30	
Benzo(a)pyrene	0.1	0.00234	"	0.165	<0.00234	60.6	30-130	13.5	30	
Pyrene	0.0943	0.00322	"	0.165	<0.00322	57.1	30-130	12	30	
Naphthalene	0.0873	0.00242	"	0.165	<0.00242	52.9	30-130	16.8	30	
Surrogate: 2-Fluorobiphenyl	51.2		"	0.33	172	51.2	33-115			
Surrogate: Nitrobenzene-d5	58.4		"	0.33	211	58.4	29-110			
Surrogate: 4-Terphenyl-d14	63.3		"	0.33	214	63.3	33-122			

MS (L 91162-MS-L616483)		Source: 91162			Prepared: 05/17/2022 Analyzed: 05/17/2022					
Chrysene	0.097	0.00312	mg/Kg	0.163	<0.00312	59.5	30-130			
Fluoranthene	0.0874	0.00197	"	0.163	<0.00197	53.6	30-130			
Fluorene	0.0668	0.00143	"	0.163	<0.00143	40.9	30-130			
Indeno(1,2,3-cd)pyrene	0.0461	0.00314	"	0.163	<0.00314	28.2	30-130			*
Naphthalene	0.0737	0.00242	"	0.163	<0.00242	45.2	30-130			
Pyrene	0.0836	0.00322	"	0.163	<0.00322	51.2	30-130			
Dibenz(a,h)anthracene	0.0741	0.00307	"	0.163	<0.00307	45.4	30-130			

Origins Laboratory, Inc.



Jen Pellegrini For Noelle Doyle Mathis, President

The results in this report apply to the samples analyzed in accordance with the chain of custody document. This analytical report must be reproduced in its entirety.

Eagle Environmental Consulting, Inc.
8000 W 44th Ave
Wheat Ridge CO 80033

Martin C Eckert III
Project Number: [none]
Project: Bonanza - Janssen 8-G Pad

PAH by 8270D SIM - Quality Control
Waypoint Analytical, Inc.

Analyte	Result	Reporting Limit	Units	Spike Level	Source Result	%REC	%REC Limits	RPD	RPD Limit	Notes
---------	--------	-----------------	-------	-------------	---------------	------	-------------	-----	-----------	-------

Batch L616483 - 3550B

MS (L 91162-MS-L616483)		Source: 91162			Prepared: 05/17/2022 Analyzed: 05/17/2022					
Benzo(k)fluoranthene	0.103	0.00219	mg/Kg	0.163	0.00283	61.4	30-130			
Acenaphthene	0.0755	0.00152	"	0.163	0.00167	45.2	30-130			
Benzo(a)pyrene	0.0873	0.00234	"	0.163	<0.00234	53.5	30-130			
1-Methylnaphthalene	0.0943	0.00182	"	0.163	<0.00182	57.8	30-130			
Benzo(a)anthracene	0.0791	0.00247	"	0.163	<0.00247	48.5	30-130			
Anthracene	0.0908	0.00167	"	0.163	<0.00167	55.7	30-130			
Benzo(b)fluoranthene	0.0478	0.00293	"	0.163	<0.00293	29.3	30-130			*
2-Methylnaphthalene	0.059	0.00323	"	0.163	<0.00323	36.1	30-130			
Surrogate: Nitrobenzene-d5	53.2		"	0.327	211	53.2	29-110			
Surrogate: 2-Fluorobiphenyl	42.8		"	0.327	172	42.8	33-115			
Surrogate: 4-Terphenyl-d14	56.8		"	0.327	214	56.8	33-122			

LCS (LCS-L616483)		Prepared: 05/17/2022 Analyzed: 05/17/2022								
Benzo(a)anthracene	0.0935	0.000493	mg/Kg	0.167		55.9	30-130			
Anthracene	0.0922	0.000334	"	0.167		55.2	30-130			
1-Methylnaphthalene	0.0801	0.000364	"	0.167		47.9	30-130			
2-Methylnaphthalene	0.08	0.000645	"	0.167		47.9	30-130			
Benzo(a)pyrene	0.0997	0.000468	"	0.167		59.7	30-130			
Naphthalene	0.0809	0.000484	"	0.167		48.4	30-130			
Acenaphthene	0.0845	0.000304	"	0.167		50.5	30-130			
Pyrene	0.0935	0.000643	"	0.167		55.9	30-130			
Benzo(k)fluoranthene	0.0999	0.000437	"	0.167		59.8	30-130			
Chrysene	0.0993	0.000624	"	0.167		59.4	30-130			
Dibenz(a,h)anthracene	0.112	0.000614	"	0.167		67	30-130			
Fluoranthene	0.0931	0.000394	"	0.167		55.7	30-130			
Indeno(1,2,3-cd)pyrene	0.0955	0.000627	"	0.167		57.1	30-130			
Benzo(b)fluoranthene	0.0937	0.000585	"	0.167		56.1	30-130			

Origins Laboratory, Inc.



Jen Pellegrini For Noelle Doyle Mathis, President

The results in this report apply to the samples analyzed in accordance with the chain of custody document. This analytical report must be reproduced in its entirety.

Eagle Environmental Consulting, Inc.
8000 W 44th Ave
Wheat Ridge CO 80033

Martin C Eckert III
Project Number: [none]
Project: Bonanza - Janssen 8-G Pad

PAH by 8270D SIM - Quality Control
Waypoint Analytical, Inc.

Analyte	Result	Reporting Limit	Units	Spike Level	Source Result	%REC	%REC Limits	RPD	RPD Limit	Notes
---------	--------	-----------------	-------	-------------	---------------	------	-------------	-----	-----------	-------

Batch L616483 - 3550B

LCS (LCS-L616483)

Prepared: 05/17/2022 Analyzed: 05/17/2022

Fluorene	0.0844	0.000286	mg/Kg	0.167		50.5	30-130			
Surrogate: 4-Terphenyl-d14	66.9		"	0.333		66.9	33-122			
Surrogate: 2-Fluorobiphenyl	49.5		"	0.333		49.5	33-115			
Surrogate: Nitrobenzene-d5	58.8		"	0.333		58.8	29-110			

LRB (LRB-L616483)

Prepared: 05/17/2022 Analyzed: 05/17/2022

Benzo(b)fluoranthene	ND	0.00067	mg/Kg				-			
Benzo(a)pyrene	ND	0.00067	"				-			
2-Methylnaphthalene	ND	0.00067	"				-			
Acenaphthene	ND	0.00067	"				-			
Benzo(a)anthracene	ND	0.00067	"				-			
Anthracene	ND	0.00067	"				-			
Chrysene	ND	0.00067	"				-			
Dibenz(a,h)anthracene	ND	0.00067	"				-			
Fluoranthene	ND	0.00067	"				-			
Fluorene	ND	0.00067	"				-			
Indeno(1,2,3-cd)pyrene	ND	0.00067	"				-			
1-Methylnaphthalene	ND	0.00067	"				-			
Pyrene	ND	0.00067	"				-			
Naphthalene	ND	0.00067	"				-			
Benzo(k)fluoranthene	ND	0.00067	"				-			
Surrogate: 2-Fluorobiphenyl	57.9		"	0.333		57.9	33-115			
Surrogate: 4-Terphenyl-d14	72.6		"	0.333		72.6	33-122			
Surrogate: Nitrobenzene-d5	63.9		"	0.333		63.9	29-110			

Origins Laboratory, Inc.



Jen Pellegrini For Noelle Doyle Mathis, President

The results in this report apply to the samples analyzed in accordance with the chain of custody document. This analytical report must be reproduced in its entirety.

Eagle Environmental Consulting, Inc.
8000 W 44th Ave
Wheat Ridge CO 80033

Martin C Eckert III
Project Number: [none]
Project: Bonanza - Janssen 8-G Pad

Total Metals by 6020B - Quality Control Waypoint Analytical, Inc.

Analyte	Result	Reporting Limit	Units	Spike Level	Source Result	%REC	%REC Limits	RPD	RPD Limit	Notes
Batch L615973 - 3050B										
MSD (L 89114-MSD-L615973)			Source: 89114		Prepared: 05/13/2022 Analyzed: 05/18/2022					
Lead	12.1	0.031	mg/Kg	2.46	9.73	96	75-125	3.2	80	
Zinc	69	0.534	"	24.6	47.8	86	75-125	7.6	80	
Silver	0.492	0.0067	"	0.492	0.0395	92	75-125	3.3	80	
Nickel	15.9	0.0633	"	2.46	13.3	106	75-125	3.7	80	
Copper	13.2	0.0806	"	2.46	11.3	77	75-125	8.6	80	
Cadmium	0.609	0.0259	"	0.492	0.191	85	75-125	8.7	80	
Barium	188	0.042	"	4.92	160	570	75-125	6	80	*
Arsenic	3.76	0.0855	"	2.46	2.38	56	75-125	1	80	I*
Selenium	2.61	0.103	"	4.92	<0.103	53	75-125	1.1	80	I*
MS (L 89114-MS-L615973)			Source: 89114		Prepared: 05/13/2022 Analyzed: 05/18/2022					
Arsenic	3.8	0.0855	mg/Kg	2.48	2.38	57	75-125			I*
Barium	177	0.042	"	4.97	160	342	75-125			*
Cadmium	0.665	0.0259	"	0.497	0.191	95	75-125			
Copper	14.4	0.0806	"	2.48	11.3	125	75-125			
Lead	12.5	0.031	"	2.48	9.73	112	75-125			
Nickel	16.5	0.0633	"	2.48	13.3	129	75-125			*
Selenium	2.64	0.103	"	4.97	<0.103	53	75-125			I*
Silver	0.509	0.0067	"	0.497	0.0395	95	75-125			
Zinc	74.5	0.534	"	24.8	47.8	108	75-125			
LCS (LCS-L615973)			Prepared: 05/13/2022 Analyzed: 05/18/2022							
Nickel	2.39	0.0633	mg/Kg	2.5		96	80-120			
Zinc	24.3	0.534	"	25		97	80-120			
Arsenic	2.47	0.0855	"	2.5		99	80-120			
Barium	5.02	0.042	"	5		100	80-120			
Cadmium	0.468	0.0259	"	0.5		94	80-120			

Origins Laboratory, Inc.



Jen Pellegrini For Noelle Doyle Mathis, President

The results in this report apply to the samples analyzed in accordance with the chain of custody document. This analytical report must be reproduced in its entirety.

Eagle Environmental Consulting, Inc.
8000 W 44th Ave
Wheat Ridge CO 80033

Martin C Eckert III
Project Number: [none]
Project: Bonanza - Janssen 8-G Pad

Total Metals by 6020B - Quality Control Waypoint Analytical, Inc.

Analyte	Result	Reporting Limit	Units	Spike Level	Source Result	%REC	%REC Limits	RPD	RPD Limit	Notes
---------	--------	-----------------	-------	-------------	---------------	------	-------------	-----	-----------	-------

Batch L615973 - 3050B

LCS (LCS-L615973)

Prepared: 05/13/2022 Analyzed: 05/18/2022

Copper	2.35	0.0806	mg/Kg	2.5		94	80-120			
Lead	2.44	0.031	"	2.5		98	80-120			
Silver	0.492	0.0067	"	0.5		98	80-120			
Selenium	4.48	0.103	"	5		90	80-120			

LRB (LRB-L615973)

Prepared: 05/13/2022 Analyzed: 05/18/2022

Arsenic	ND	0.25	mg/Kg				-			
Selenium	ND	0.25	"				-			
Barium	ND	0.25	"				-			
Cadmium	ND	0.25	"				-			
Copper	ND	0.25	"				-			
Lead	ND	0.25	"				-			
Nickel	ND	0.25	"				-			
Zinc	ND	2.5	"				-			
Silver	ND	0.25	"				-			

Origins Laboratory, Inc.



Jen Pellegrini For Noelle Doyle Mathis, President

The results in this report apply to the samples analyzed in accordance with the chain of custody document. This analytical report must be reproduced in its entirety.

Eagle Environmental Consulting, Inc.
8000 W 44th Ave
Wheat Ridge CO 80033

Martin C Eckert III
Project Number: [none]
Project: Bonanza - Janssen 8-G Pad

Total Metals by 7196A - Quality Control
Waypoint Analytical, Inc.

Analyte	Result	Reporting Limit	Units	Spike Level	Source Result	%REC	%REC Limits	RPD	RPD Limit	Notes
Batch L616389 -										
DUP (L 89057-DUP)		Source: 89057			Prepared: Analyzed: 05/16/2022					
Chromium, Hexavalent	ND	0.244	mg/Kg		<0.500	-		0	20	
MS (L 89057-MS)		Source: 89057			Prepared: Analyzed: 05/16/2022					
Chromium, Hexavalent	4.54	0.244	mg/Kg	7.81	<0.244	58	75-125			*
LCS (LCS)					Prepared: Analyzed: 05/16/2022					
Chromium, Hexavalent	7.4	0.244	mg/Kg	8		93	75-125			
LRB (LRB)					Prepared: Analyzed: 05/16/2022					
Chromium, Hexavalent	ND	0.5	mg/Kg							

Origins Laboratory, Inc.



Jen Pellegrini For Noelle Doyle Mathis, President

The results in this report apply to the samples analyzed in accordance with the chain of custody document. This analytical report must be reproduced in its entirety.

Eagle Environmental Consulting, Inc.
8000 W 44th Ave
Wheat Ridge CO 80033

Martin C Eckert III
Project Number: [none]
Project: Bonanza - Janssen 8-G Pad

Notes and Definitions

U Sample is Non-Detect.

QM-07 The spike recovery was outside acceptance limits for the MS and/or MSD. The batch was accepted based on acceptable LCS recovery.

J Estimated Value. Analyte below reported quantitation limit.

I* [Undefined]

* QC Failure

ND Analyte NOT DETECTED at or above the reporting limit

RPD Relative Percent Difference

All soil results are reported on a wet weight basis.

Origins Laboratory, Inc.



Jen Pellegrini For Noelle Doyle Mathis, President

The results in this report apply to the samples analyzed in accordance with the chain of custody document. This analytical report must be reproduced in its entirety.



May 23, 2022

Eagle Environmental Consulting, Inc.

Martin C Eckert III

8000 W 44th Ave

Wheat Ridge CO 80033

Project Name - Bonanza - Janssen 8-G Pad

Project Number - [none]

Attached are your analytical results for Bonanza - Janssen 8-G Pad received by Origins Laboratory, Inc. May 06, 2022. This project is associated with Origins project number Y205178-01.

The analytical results in the following report were analyzed under the guidelines of EPA Methods. These methods are identified as follows; "SW" are defined in SW-846, "EPA" are defined in 40CFR part 136 and "SM" are defined in the most current revision of Standard Methods For the Examination of Water and Wastewater.

The analytical results apply specifically to the samples and analyses specified per the attached Chain of Custody. As such, this report shall not be reproduced except in full, without the written approval of Origin's laboratory.

Unless otherwise noted, the analytical results for all soil samples are reported on a wet weight basis. All analytical analyses were performed under NELAP guidelines unless noted by a data qualifier.

Any holding time exceedances, deviations from the method specifications or deviations from Origins Laboratory's Standard Operating Procedures are outlined in the case narrative.

Thank you for selecting Origins for your analytical needs. Please contact us with any questions concerning this report, or if we can help with anything at all.

Origins Laboratory, Inc.
303.433.1322
o-squad@oelabinc.com



1725 Elk Place, Denver, CO 80211 | Phone: 303.433.1322 | Fax: 303.265.9645

Eagle Environmental Consulting, Inc.

8000 W 44th Ave

Wheat Ridge CO 80033

Martin C Eckert III

Project Number: [none]

Project: Bonanza - Janssen 8-G Pad

CROSS REFERENCE REPORT

Sample ID	Laboratory ID	Matrix	Date Sampled	Date Received
Background-01@0-0.25'	Y205178-01	Soil	May 6, 2022 11:10	05/06/2022 14:55
Background-02@0-0.25'	Y205178-02	Soil	May 6, 2022 11:20	05/06/2022 14:55

Origins Laboratory, Inc.



The results in this report apply to the samples analyzed in accordance with the chain of custody document. This analytical report must be reproduced in its entirety.

Eagle Environmental Consulting, Inc.
8000 W 44th Ave
Wheat Ridge CO 80033

Martin C Eckert III
Project Number: [none]
Project: Bonanza - Janssen 8-G Pad

705178

page 1 of 1

Client: Eagle Environmental Consulting
Address: 8000 W 44th Ave
Wheat Ridge, CO 80033
Telephone Number: 303-433-0479
Email Address: mce@eak-enviro.com

Project Manager: Martin Eckert III
Project Name: Janssen 8-G Pad
Project Number:
Samples Collected By: TC

Fax: 303.265.9645

Sample ID Description	Date Sampled	Time Sampled	# of Containers	Preservative			Matrix	Analyzed	Sample Instructions
				Unpreserved	HCl	HNO ₃			
Budget-0100-0.25'	05-06-22	1110	2	X			Soil	EC, SAR, pH =	1
Budget-0200-0.25'	05-06-22	1120	2	X			Soil	Schedule Paste Prep	2
							Groundwater		3
							Other		4
							Other		5
							Other		6
							Other		7
							Other		8
							Other		9
							Other		10

Relinquished By: Trevor Copple Date: 05-06-22 Time: 1455
Relinquished By: Date: Time: 1455

Received By: Date: 5/6/22 Time: 1455
Received By: Date: Time: 1455

Turnaround Time: Same Day ☐ 24 Hr ☐ 48 Hr ☐ 72 Hr ☒ Standard

Temp Received: 3.4
Date Results Needed: Bonanza

Origins Laboratory, Inc.

J. Bynon

The results in this report apply to the samples analyzed in accordance with the chain of custody document. This analytical report must be reproduced in its entirety.

Eagle Environmental Consulting, Inc.
8000 W 44th Ave
Wheat Ridge CO 80033

Martin C Eckert III
Project Number: [none]
Project: Bonanza - Janssen 8-G Pad

Origins Laboratory

F-012207-01-R1
Effective Date: 01/09/12

Sample Receipt Checklist

Origins Work Order: Y205178 Client: Eagle
Client Project ID: Janssen 8-G Pad

Checklist Completed by: SG Shipped Via: HD
Date/time completed: 5/9/22 (UPS, FedEx, Hand Delivered, Pick-up, etc.)
Airbill #: N/A

Matrix(s) Received: (Check all that apply): ☒ Soil/Solid ☐ Water ☐ Other: _____

Cooler Number/Temperature: 1 / _____ °C _____ / _____ °C (Describe) _____ °C

Thermometer ID: T004

Requirement Description	Yes	No	N/A	Comments (if any)
If samples require cooling, was the temperature between 0°C to ≤ 6°C ⁽¹⁾ ?	<input checked="" type="checkbox"/>	<input type="checkbox"/>	<input type="checkbox"/>	
Is there ice present (document if blue ice is used)	<input checked="" type="checkbox"/>	<input type="checkbox"/>	<input type="checkbox"/>	
Are custody seals present on cooler? (if so, document in comments if they are signed and dated, broken or intact)	<input checked="" type="checkbox"/>	<input type="checkbox"/>	<input type="checkbox"/>	
Are custody seals present on each sample container? (if so, document in comments if they are signed and dated, broken or intact)	<input checked="" type="checkbox"/>	<input type="checkbox"/>	<input type="checkbox"/>	
Were all samples received intact ⁽¹⁾ ?	<input checked="" type="checkbox"/>	<input type="checkbox"/>	<input type="checkbox"/>	
Was adequate sample volume provided ⁽¹⁾ ?	<input checked="" type="checkbox"/>	<input type="checkbox"/>	<input type="checkbox"/>	
Are short holding time analytes or samples with HTs due within 48 hours present ⁽¹⁾ ?	<input checked="" type="checkbox"/>	<input type="checkbox"/>	<input type="checkbox"/>	
Is a chain-of-custody (COC) present and filled out completely ⁽¹⁾ ?	<input checked="" type="checkbox"/>	<input type="checkbox"/>	<input type="checkbox"/>	
Does the COC agree with the number and type of sample bottles received ⁽¹⁾ ?	<input checked="" type="checkbox"/>	<input type="checkbox"/>	<input type="checkbox"/>	
Do the sample IDs on the bottle labels match the COC ⁽¹⁾ ?	<input checked="" type="checkbox"/>	<input type="checkbox"/>	<input type="checkbox"/>	
Is the COC properly relinquished by the client with date and time recorded ⁽¹⁾ ?	<input checked="" type="checkbox"/>	<input type="checkbox"/>	<input type="checkbox"/>	
For volatiles in water — is there headspace (> ¼ inch bubble) present? If yes, contact client and note in narrative.	<input checked="" type="checkbox"/>	<input type="checkbox"/>	<input type="checkbox"/>	
Are samples preserved that require preservation and was it checked ⁽¹⁾ ? (note ID of confirmation instrument used in comments) / (preservation is not confirmed for subcontracted analyses in order to insure sample integrity)/(pH <2 for samples preserved with HNO ₃ , HCL, H ₂ SO ₄) / (pH >10 for samples preserved with NaAsO ₂ +NaOH, ZnAc+NaOH)	<input checked="" type="checkbox"/>	<input type="checkbox"/>	<input type="checkbox"/>	
Additional Comments (if any):				

⁽¹⁾ If NO, then contact the client before proceeding with analysis and note date/time and person contacted as well as the corrective action to in the additional comments (above) and the case narrative.

Reviewed by (Project Manager) JB Date/Time Reviewed 5-10-22

Origins Laboratory, Inc.

J. Bynon

The results in this report apply to the samples analyzed in accordance with the chain of custody document. This analytical report must be reproduced in its entirety.

Eagle Environmental Consulting, Inc.
8000 W 44th Ave
Wheat Ridge CO 80033

Martin C Eckert III
Project Number: [none]
Project: Bonanza - Janssen 8-G Pad

Background-01@0-0.25'**5/6/2022 11:10:00AM**

Analyte	Result	Min Detection Limit	Reporting Limit	Units	Dilution	Batch	Prepared	Analyzed	Notes
---------	--------	---------------------	-----------------	-------	----------	-------	----------	----------	-------

Origins Laboratory, Inc.
Y205178-01 (Soil)**Boron (DTPA Sorbitol)**

Boron	0.377	0.0993	mg/L	1	B2E1011	05/10/2022	05/11/2022
-------	-------	--------	------	---	---------	------------	------------

Metals by Saturated Paste by EPA 6010

Calcium	1.24	0.499	meq/L	10	[CALC]	05/10/2022	05/11/2022
Magnesium	ND	0.823	"	"	"	"	"
Sodium	1.59	0.435	"	"	"	"	"

pH in Soil by 9045D

pH	8.49	pH Units	1	B2E1013	05/10/2022	05/11/2022
----	------	----------	---	---------	------------	------------

SAR by 20B Saturated Paste

SAR	1.70	SAR	1	B2E1012	05/10/2022	05/11/2022
-----	------	-----	---	---------	------------	------------

Specific Conductance Mod. 9050A

Specific Conductance (EC)	0.369	0.00500	mmhos/cm	1	B2E1013	05/10/2022	05/11/2022
---------------------------	-------	---------	----------	---	---------	------------	------------

Total Metals by 7196A

Chromium, Hexavalent	ND	0.244	0.5	mg/Kg	1	L616389	05/06/2022	05/16/2022
----------------------	----	-------	-----	-------	---	---------	------------	------------

Origins Laboratory, Inc.



The results in this report apply to the samples analyzed in accordance with the chain of custody document. This analytical report must be reproduced in its entirety.

Eagle Environmental Consulting, Inc.
8000 W 44th Ave
Wheat Ridge CO 80033

Martin C Eckert III
Project Number: [none]
Project: Bonanza - Janssen 8-G Pad

Background-01@0-0.25'

5/6/2022 11:10:00AM

Analyte	Result	Min Detection Limit	Reporting Limit	Units	Dilution	Batch	Prepared	Analyzed	Notes
---------	--------	------------------------	--------------------	-------	----------	-------	----------	----------	-------

Waypoint Analytical, LLC.

Y205178-01 (Soil)

Total Metals by 6020B

Arsenic	3.45	0.0855	0.25	mg/Kg	5	L615564	05/11/2022	05/19/2022	
Barium	108	0.042	0.25	"	"	"	"	"	
Cadmium	0.107	0.0259	0.25	"	"	"	"	"	J
Copper	6.35	0.0806	0.25	"	"	"	"	"	
Lead	6.59	0.031	0.25	"	"	"	"	"	
Nickel	7.43	0.0633	0.25	"	"	"	"	"	
Selenium	0.371	0.103	0.25	"	"	"	"	"	
Silver	0.024	0.0067	0.25	"	"	"	"	"	J
Zinc	27.9	0.534	2.5	"	"	"	"	"	

Origins Laboratory, Inc.



The results in this report apply to the samples analyzed in accordance with the chain of custody document. This analytical report must be reproduced in its entirety.

Eagle Environmental Consulting, Inc.
8000 W 44th Ave
Wheat Ridge CO 80033

Martin C Eckert III
Project Number: [none]
Project: Bonanza - Janssen 8-G Pad

Background-02@0-0.25'**5/6/2022 11:20:00AM**

Analyte	Result	Min Detection Limit	Reporting Limit	Units	Dilution	Batch	Prepared	Analyzed	Notes
---------	--------	------------------------	--------------------	-------	----------	-------	----------	----------	-------

Origins Laboratory, Inc.
Y205178-02 (Soil)**Boron (DTPA Sorbitol)**

Boron	0.375	0.0988	mg/L	1	B2E1011	05/10/2022	05/11/2022
-------	-------	--------	------	---	---------	------------	------------

Metals by Saturated Paste by EPA 6010

Calcium	1.83	0.499	meq/L	10	[CALC]	05/10/2022	05/11/2022
Magnesium	ND	0.823	"	"	"	"	"
Sodium	0.809	0.435	"	"	"	"	"

pH in Soil by 9045D

pH	8.41	pH Units	1	B2E1013	05/10/2022	05/11/2022
----	------	----------	---	---------	------------	------------

SAR by 20B Saturated Paste

SAR	0.711	SAR	1	B2E1012	05/10/2022	05/11/2022
-----	-------	-----	---	---------	------------	------------

Specific Conductance Mod. 9050A

Specific Conductance (EC)	0.367	0.00500	mmhos/cm	1	B2E1013	05/10/2022	05/11/2022
---------------------------	-------	---------	----------	---	---------	------------	------------

Total Metals by 6020B

Arsenic	1.66	0.0855	0.25	mg/Kg	5	L615973	05/13/2022	05/18/2022
Barium	108	0.042	0.25	"	"	"	"	"
Cadmium	0.108	0.0259	0.25	"	"	"	"	"
Copper	5.98	0.0806	0.25	"	"	"	"	"

Origins Laboratory, Inc.



The results in this report apply to the samples analyzed in accordance with the chain of custody document. This analytical report must be reproduced in its entirety.

Eagle Environmental Consulting, Inc.
8000 W 44th Ave
Wheat Ridge CO 80033

Martin C Eckert III
Project Number: [none]
Project: Bonanza - Janssen 8-G Pad

Background-02@0-0.25'

5/6/2022 11:20:00AM

Analyte	Result	Min Detection Limit	Reporting Limit	Units	Dilution	Batch	Prepared	Analyzed	Notes
---------	--------	---------------------	-----------------	-------	----------	-------	----------	----------	-------

Waypoint Analytical, LLC.
Y205178-02 (Soil)

Total Metals by 6020B

Lead	5.31	0.031	0.25	mg/Kg	5	L615973	05/13/2022	05/18/2022	
Nickel	6.51	0.0633	0.25	"	"	"	"	"	
Selenium	ND	0.103	0.25	"	"	"	"	"	
Silver	0.023	0.0067	0.25	"	"	"	"	"	J
Zinc	26.2	0.534	2.5	"	"	"	"	"	

Total Metals by 7196A

Chromium, Hexavalent	ND	0.244	0.5	mg/Kg	1	L616389	05/06/2022	05/16/2022	
----------------------	----	-------	-----	-------	---	---------	------------	------------	--

Origins Laboratory, Inc.



The results in this report apply to the samples analyzed in accordance with the chain of custody document. This analytical report must be reproduced in its entirety.

Eagle Environmental Consulting, Inc.
8000 W 44th Ave
Wheat Ridge CO 80033

Martin C Eckert III
Project Number: [none]
Project: Bonanza - Janssen 8-G Pad

Saturated Paste - Quality Control Origins Laboratory, Inc.

Analyte	Result	Reporting Limit	Units	Spike Level	Source Result	%REC	%REC Limits	RPD	RPD Limit	Notes
Batch B2E1013 - NO PREP										
Blank (B2E1013-BLK1)					Prepared: 05/10/2022 Analyzed: 05/11/2022					
Specific Conductance (EC)	0.00110	0.0300	mmhos/cm							
pH	0.00		pH Units							
Duplicate (B2E1013-DUP1)					Source: Y205175-06		Prepared: 05/10/2022 Analyzed: 05/11/2022			
pH	8.12		pH Units		8.16			0.491	25	
Specific Conductance (EC)	1.84	0.0300	mmhos/cm		1.89			2.42	25	

Origins Laboratory, Inc.



The results in this report apply to the samples analyzed in accordance with the chain of custody document. This analytical report must be reproduced in its entirety.

Eagle Environmental Consulting, Inc.
8000 W 44th Ave
Wheat Ridge CO 80033

Martin C Eckert III
Project Number: [none]
Project: Bonanza - Janssen 8-G Pad

Total Metals by 6020B - Quality Control Waypoint Analytical, LLC.

Analyte	Result	Reporting Limit	Units	Spike Level	Source Result	%REC	%REC Limits	RPD	RPD Limit	Notes
Batch L615973 - 3050B										
MSD (L 89114-MSD-L615973)			Source: 89114		Prepared: 05/13/2022 Analyzed: 05/18/2022					
Arsenic	3.76	0.0855	mg/Kg	2.46	2.38	56	75-125	1	80	I*
Barium	188	0.042	"	4.92	160	570	75-125	6	80	*
Cadmium	0.609	0.0259	"	0.492	0.191	85	75-125	8.7	80	
Copper	13.2	0.0806	"	2.46	11.3	77	75-125	8.6	80	
Lead	12.1	0.031	"	2.46	9.73	96	75-125	3.2	80	
Nickel	15.9	0.0633	"	2.46	13.3	106	75-125	3.7	80	
Selenium	2.61	0.103	"	4.92	89114	53	75-125	1.1	80	I*
Silver	0.492	0.0067	"	0.492	0.0395	92	75-125	3.3	80	
Zinc	69	0.534	"	24.6	47.8	86	75-125	7.6	80	
MS (L 89114-MS-L615973)			Source: 89114		Prepared: 05/13/2022 Analyzed: 05/18/2022					
Nickel	16.5	0.0633	mg/Kg	2.48	13.3	129	75-125			*
Silver	0.509	0.0067	"	0.497	0.0395	95	75-125			
Selenium	2.64	0.103	"	4.97	89114	53	75-125			I*
Zinc	74.5	0.534	"	24.8	47.8	108	75-125			
Copper	14.4	0.0806	"	2.48	11.3	125	75-125			
Cadmium	0.665	0.0259	"	0.497	0.191	95	75-125			
Arsenic	3.8	0.0855	"	2.48	2.38	57	75-125			I*
Barium	177	0.042	"	4.97	160	342	75-125			*
Lead	12.5	0.031	"	2.48	9.73	112	75-125			
LCS (LCS-L615973)			Prepared: 05/13/2022 Analyzed: 05/18/2022							
Copper	2.35	0.0806	mg/Kg	2.5		94	80-120			
Arsenic	2.47	0.0855	"	2.5		99	80-120			
Zinc	24.3	0.534	"	25		97	80-120			
Cadmium	0.468	0.0259	"	0.5		94	80-120			
Lead	2.44	0.031	"	2.5		98	80-120			

Origins Laboratory, Inc.



The results in this report apply to the samples analyzed in accordance with the chain of custody document. This analytical report must be reproduced in its entirety.

Eagle Environmental Consulting, Inc.
8000 W 44th Ave
Wheat Ridge CO 80033

Martin C Eckert III
Project Number: [none]
Project: Bonanza - Janssen 8-G Pad

Total Metals by 6020B - Quality Control Waypoint Analytical, LLC.

Analyte	Result	Reporting Limit	Units	Spike Level	Source Result	%REC	%REC Limits	RPD	RPD Limit	Notes
---------	--------	-----------------	-------	-------------	---------------	------	-------------	-----	-----------	-------

Batch L615973 - 3050B

LCS (LCS-L615973)

Prepared: 05/13/2022 Analyzed: 05/18/2022

Nickel	2.39	0.0633	mg/Kg	2.5		96	80-120			
Selenium	4.48	0.103	"	5		90	80-120			
Silver	0.492	0.0067	"	0.5		98	80-120			
Barium	5.02	0.042	"	5		100	80-120			

LRB (LRB-L615973)

Prepared: 05/13/2022 Analyzed: 05/18/2022

Silver	ND	0.25	mg/Kg				-			
Selenium	ND	0.25	"				-			
Zinc	ND	2.5	"				-			
Cadmium	ND	0.25	"				-			
Nickel	ND	0.25	"				-			
Copper	ND	0.25	"				-			
Barium	ND	0.25	"				-			
Arsenic	ND	0.25	"				-			
Lead	ND	0.25	"				-			

Origins Laboratory, Inc.



The results in this report apply to the samples analyzed in accordance with the chain of custody document. This analytical report must be reproduced in its entirety.

Eagle Environmental Consulting, Inc.
8000 W 44th Ave
Wheat Ridge CO 80033

Martin C Eckert III
Project Number: [none]
Project: Bonanza - Janssen 8-G Pad

Total Metals by 7196A - Quality Control Waypoint Analytical, LLC.

Analyte	Result	Reporting Limit	Units	Spike Level	Source Result	%REC	%REC Limits	RPD	RPD Limit	Notes
Batch L616389 -										
DUP (L 89057-DUP)	Source: 89057				Prepared: Analyzed: 05/16/2022					
Chromium, Hexavalent	ND	0.244	mg/Kg		89057	-		0	20	
MS (L 89057-MS)	Source: 89057				Prepared: Analyzed: 05/16/2022					
Chromium, Hexavalent	4.54	0.244	mg/Kg	7.81	89057	58	75-125			*
LCS (LCS)					Prepared: Analyzed: 05/16/2022					
Chromium, Hexavalent	7.4	0.244	mg/Kg	8		93	75-125			
LRB (LRB)					Prepared: Analyzed: 05/16/2022					
Chromium, Hexavalent	ND	0.5	mg/Kg							

Origins Laboratory, Inc.



The results in this report apply to the samples analyzed in accordance with the chain of custody document. This analytical report must be reproduced in its entirety.

Eagle Environmental Consulting, Inc.
8000 W 44th Ave
Wheat Ridge CO 80033

Martin C Eckert III
Project Number: [none]
Project: Bonanza - Janssen 8-G Pad

Total Metals by 6020B - Quality Control Waypoint Analytical, LLC.

Analyte	Result	Reporting Limit	Units	Spike Level	Source Result	%REC	%REC Limits	RPD	RPD Limit	Notes
Batch L615564 - 3050B										
MSD (L 89061-MSD-L615564)			Source: Y205178-01		Prepared: 05/11/2022 Analyzed: 05/19/2022					
Silver	0.48	0.0067	mg/Kg	0.46	0.024	99	75-125	3	80	
Zinc	48.7	0.534	"	23	27.9	90	75-125	5.2	80	
Selenium	4.17	0.103	"	4.6	0.371	83	75-125	7.1	80	
Nickel	9.3	0.0633	"	2.3	7.43	81	75-125	4.1	80	
Lead	7.67	0.031	"	2.3	6.59	47	75-125	2.8	80	*
Copper	8.45	0.0806	"	2.3	6.35	91	75-125	0.8	80	
Cadmium	0.564	0.0259	"	0.46	0.107	99	75-125	1.9	80	
Barium	110	0.042	"	4.6	108	43	75-125	4.4	80	*
Arsenic	4.94	0.0855	"	2.3	3.45	65	75-125	7	80	*
MS (L 89061-MS-L615564)			Source: Y205178-01		Prepared: 05/11/2022 Analyzed: 05/19/2022					
Barium	115	0.042	mg/Kg	4.72	108	148	75-125			*
Cadmium	0.575	0.0259	"	0.472	0.107	99	75-125			
Copper	8.52	0.0806	"	2.36	6.35	92	75-125			
Lead	7.89	0.031	"	2.36	6.59	55	75-125			*
Nickel	9.69	0.0633	"	2.36	7.43	96	75-125			
Selenium	4.48	0.103	"	4.72	0.371	87	75-125			
Silver	0.495	0.0067	"	0.472	0.024	100	75-125			
Arsenic	5.3	0.0855	"	2.36	3.45	78	75-125			
Zinc	51.3	0.534	"	23.6	27.9	99	75-125			
LCS (LCS-L615564)			Prepared: 05/11/2022 Analyzed: 05/19/2022							
Lead	2.38	0.031	mg/Kg	2.5		95	80-120			
Arsenic	2.46	0.0855	"	2.5		98	80-120			
Cadmium	0.506	0.0259	"	0.5		101	80-120			
Copper	2.43	0.0806	"	2.5		97	80-120			
Nickel	2.42	0.0633	"	2.5		97	80-120			

Origins Laboratory, Inc.



The results in this report apply to the samples analyzed in accordance with the chain of custody document. This analytical report must be reproduced in its entirety.

Eagle Environmental Consulting, Inc.
8000 W 44th Ave
Wheat Ridge CO 80033

Martin C Eckert III
Project Number: [none]
Project: Bonanza - Janssen 8-G Pad

Total Metals by 6020B - Quality Control Waypoint Analytical, LLC.

Analyte	Result	Reporting Limit	Units	Spike Level	Source Result	%REC	%REC Limits	RPD	RPD Limit	Notes
---------	--------	-----------------	-------	-------------	---------------	------	-------------	-----	-----------	-------

Batch L615564 - 3050B

LCS (LCS-L615564)

Prepared: 05/11/2022 Analyzed: 05/19/2022

Selenium	5.01	0.103	mg/Kg	5		100	80-120			
Silver	0.495	0.0067	"	0.5		99	80-120			
Zinc	24.9	0.534	"	25		100	80-120			
Barium	4.97	0.042	"	5		99	80-120			

LRB (LRB-L615564)

Prepared: 05/11/2022 Analyzed: 05/19/2022

Nickel	ND	0.25	mg/Kg				-			
Arsenic	ND	0.25	"				-			
Barium	ND	0.25	"				-			
Cadmium	ND	0.25	"				-			
Lead	ND	0.25	"				-			
Selenium	ND	0.25	"				-			
Silver	ND	0.25	"				-			
Zinc	ND	2.5	"				-			
Copper	ND	0.25	"				-			

Origins Laboratory, Inc.



The results in this report apply to the samples analyzed in accordance with the chain of custody document. This analytical report must be reproduced in its entirety.

Eagle Environmental Consulting, Inc.

8000 W 44th Ave

Wheat Ridge CO 80033

Martin C Eckert III

Project Number: [none]

Project: Bonanza - Janssen 8-G Pad

Notes and Definitions

J Estimated Value. Analyte below reported quantitation limit.

I* [Undefined]

* QC Failure

ND Analyte NOT DETECTED at or above the reporting limit

RPD Relative Percent Difference

All soil results are reported on a wet weight basis.

Origins Laboratory, Inc.



The results in this report apply to the samples analyzed in accordance with the chain of custody document. This analytical report must be reproduced in its entirety.