

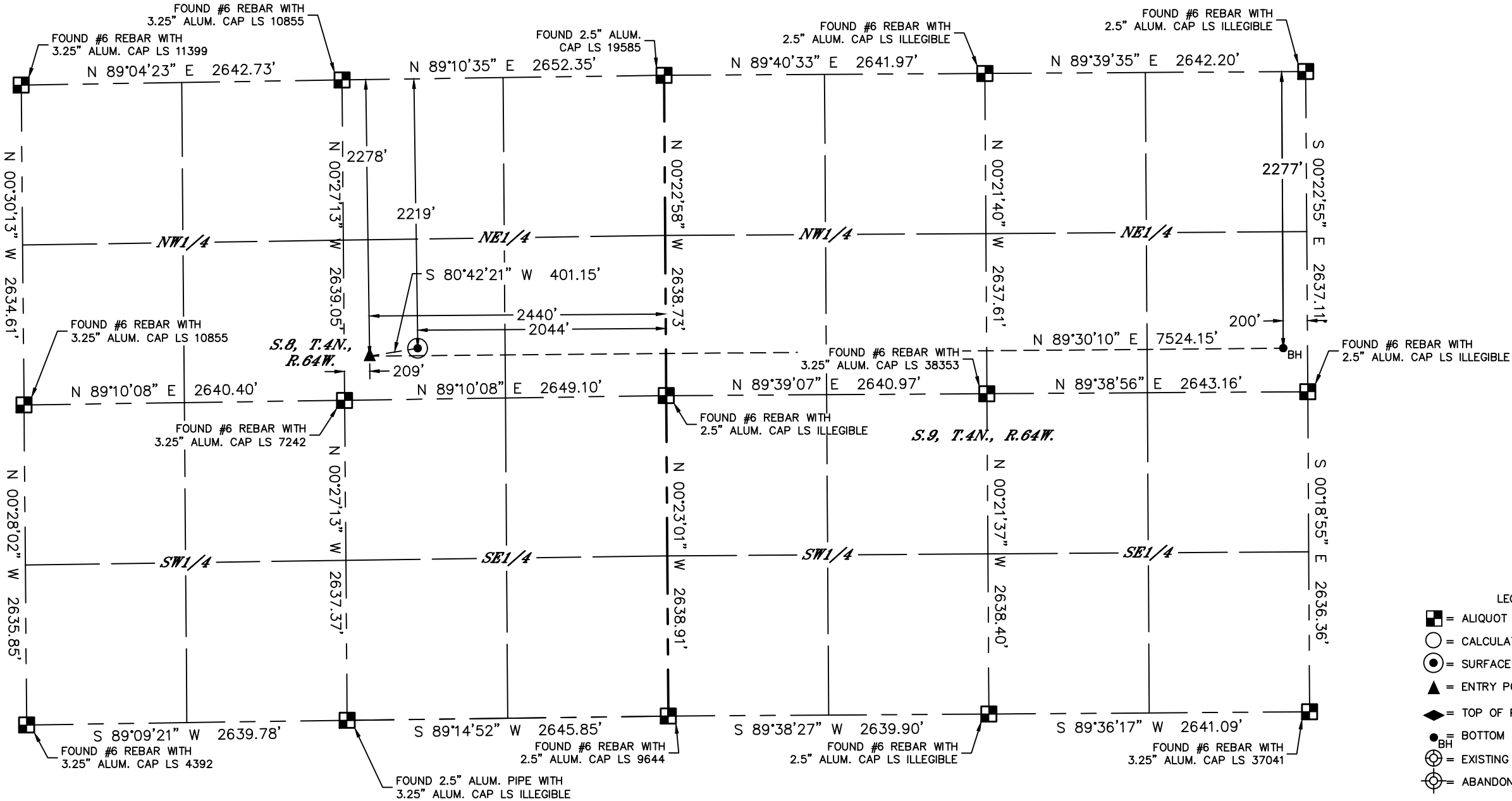


Lat40°, Inc. 6250 W. 10th Street, Unit 2, Greeley, CO 970-515-5294

WELL LOCATION CERTIFICATE

HEN 10N  
PDC ENERGY

SECTION: 8  
TOWNSHIP: 4N  
RANGE: 64W  
6TH. P.M.  
WELD COUNTY, CO

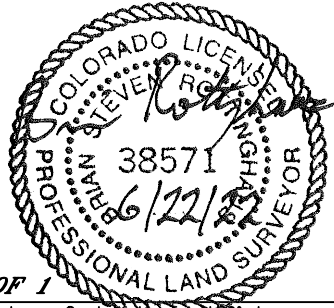


- LEGEND
- = ALIQUOT MONUMENT AS DESCRIBED
  - = CALCULATED POSITION
  - = SURFACE HOLE LOCATION (SHL)
  - ▲ = ENTRY POINT LOCATION (EP)
  - ◆ = TOP OF PRODUCTIVE ZONE (PZONE)
  - = BOTTOM HOLE LOCATION (BHL)
  - ⊙ = EXISTING WELL
  - ⊙ = ABANDONED WELL

CLIENT: PDC ENERGY, INC.				LANDMAN: DARIN SPITZER			
INSTRUMENT OPERATOR: CASEY KOHOUT				SURVEY DATE: 10/14/2020		SURFACE USE: RANGE LAND	
SHL FOOTAGE		SHL LAT °	SHL LONG °	SHL PDOP	SHL ELEV (FT.)	SHL 1/4/1/4	SHL S-T-R
2219	FNL	2044	FEL	40.32805	-104.57234	1.5	4779 SWNE 8-4-64

BHL FOOTAGE		BHL LAT °	BHL LONG °	BHL S-T-R	EP LAT °	EP LONG °	EP S-T-R
2277	FNL	200	FEL	40.32784	-104.54679	9-4-64	40.32788 -104.57377 8-4-64

- NOTE:
- 1) Bearings shown are Grid Bearings of the Colorado State Plane Coordinate System, North Zone, North American Datum 1983. The lineal dimensions as contained herein are based upon the "U.S. Survey Foot."
  - 2) Distances to section lines measured at 90 degrees from said section lines.
  - 3) Ground elevations are based on an observed GPS elevation (NAVD 1988 DATUM).
  - 4) Latitude and Longitude shown are (NAD 83 DATUM).
  - 5) IMPROVEMENTS: See LOCATION DRAWING for all visible improvements within 500' of oil and gas location.
  - 6) This map does not represent a boundary survey.



SHEET 1 OF 1  
Brian S. Rottinghaus—On behalf of Lat40°, Inc.  
Colorado Licensed Professional Land Surveyor No. 38571  
DATE: 06/22/2022  
PROJECT#: 2019090

