

**VERDAD RESOURCES LLC
FEDERAL PERRY #13-32
SECTION 32, T9N, R58W, 6th P.M.
WELD COUNTY, COLORADO**

DATE:

DESCRIPTION:

[illegible]

Well Name	Lat: (NAD 27)	Long: (NAD 27)	Lat: (NAD 83)	Long: (NAD 83)	Section	Township	Range	Qtr./Qtr.	DATE COMPLETED	PDOP	OPERATOR
FEDERAL PERRY #13-32	40°42'06.57" (40.701824)	103°53'40.26" (103.894516)	40°42'06.52" (40.701811)	103°53'42.07" (103.895020)	32	T9N	R58W	SW/SW	2/8/2022	1.6	ORION RICE





PHOTO: VIEW OF AS-DRILLED LOCATION CAMERA ANGLE: NORTHERLY



PHOTO: VIEW OF AS-DRILLED LOCATION CAMERA ANGLE: EASTERLY

VERDAD RESOURCES LLC

**FEDERAL PERRY #13-32
SW 1/4 SW 1/4, SECTION 32, T9N, R58W, 6th P.M.
WELD COUNTY, COLORADO**



UELS, LLC
Corporate Office * 85 South 200 East
Vernal, UT 84078 * (435) 789-1017

TAKEN BY	O.R., J.W.	02-08-22	
DRAWN BY	L.K.	02-09-22	
LOCATION PHOTOS			PHOTO 1

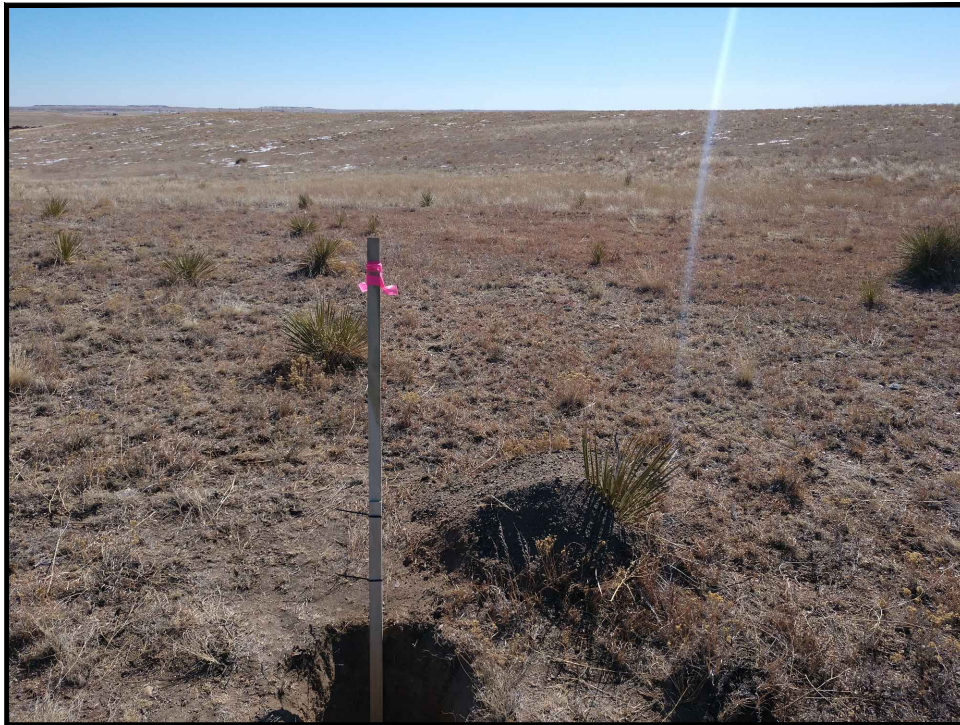


PHOTO: VIEW OF AS-DRILLED LOCATION CAMERA ANGLE: SOUTHERLY

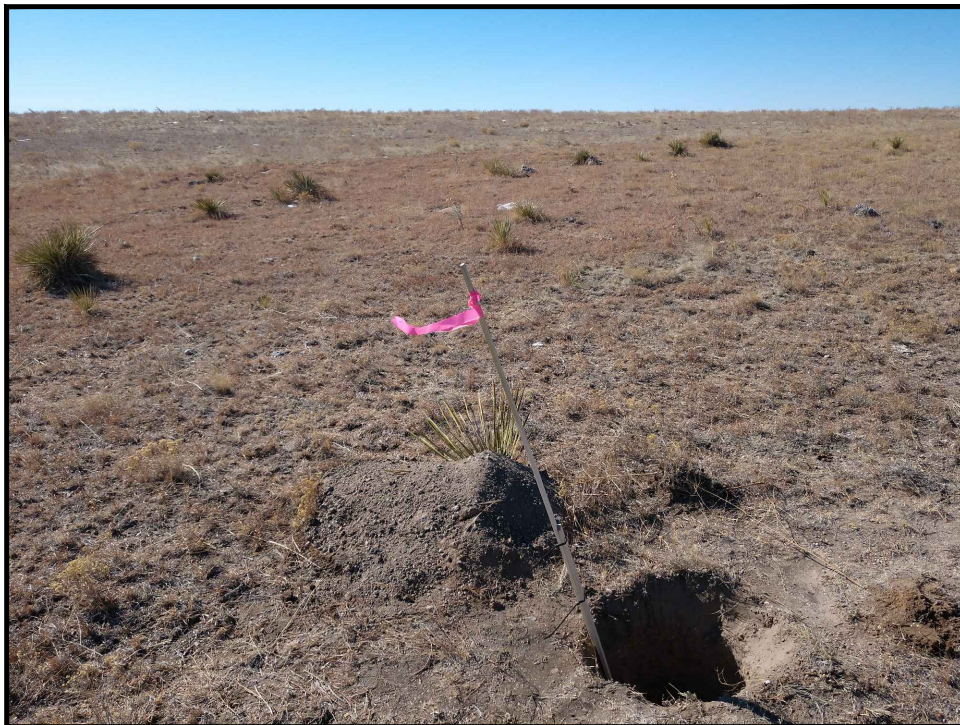


PHOTO: VIEW OF AS-DRILLED LOCATION CAMERA ANGLE: WESTERLY

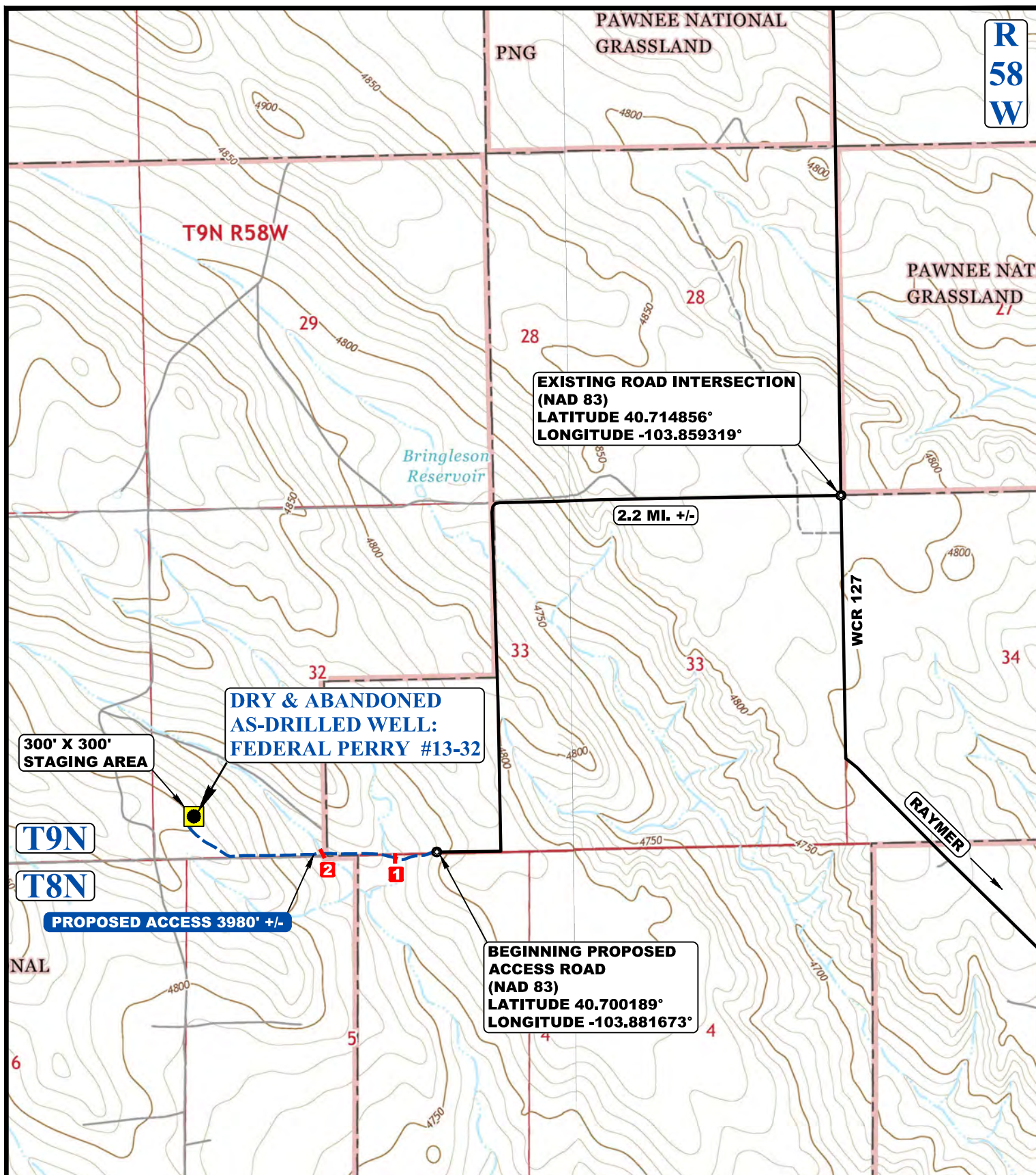
VERDAD RESOURCES LLC

**FEDERAL PERRY #13-32
SW 1/4 SW 1/4, SECTION 32, T9N, R58W, 6th P.M.
WELD COUNTY, COLORADO**



UELS, LLC
Corporate Office * 85 South 200 East
Vernal, UT 84078 * (435) 789-1017

TAKEN BY	O.R., J.W.	02-08-22	
DRAWN BY	L.K.	02-09-22	
LOCATION PHOTOS			PHOTO 2



LEGEND:

- EXISTING ROAD
- PROPOSED ROAD
- DRY & ABANDONED AS-DRILLED WELL
- 1 INSTALL 54" CULVERT
- 2 INSTALL 60" CULVERT

UELS, LLC

Corporate Office * 85 South 200 East
Vernal, UT 84078 * (435) 789-1017



VERDAD RESOURCES LLC

FEDERAL PERRY #13-32
SW 1/4 SW 1/4, SECTION 32, T9N, R58W, 6th P.M.
WELD COUNTY, COLORADO

SURVEYED BY	O.R., J.W.	02-08-22	SCALE
DRAWN BY	L.K.	02-09-22	1 : 24,000
ACCESS ROAD MAP			