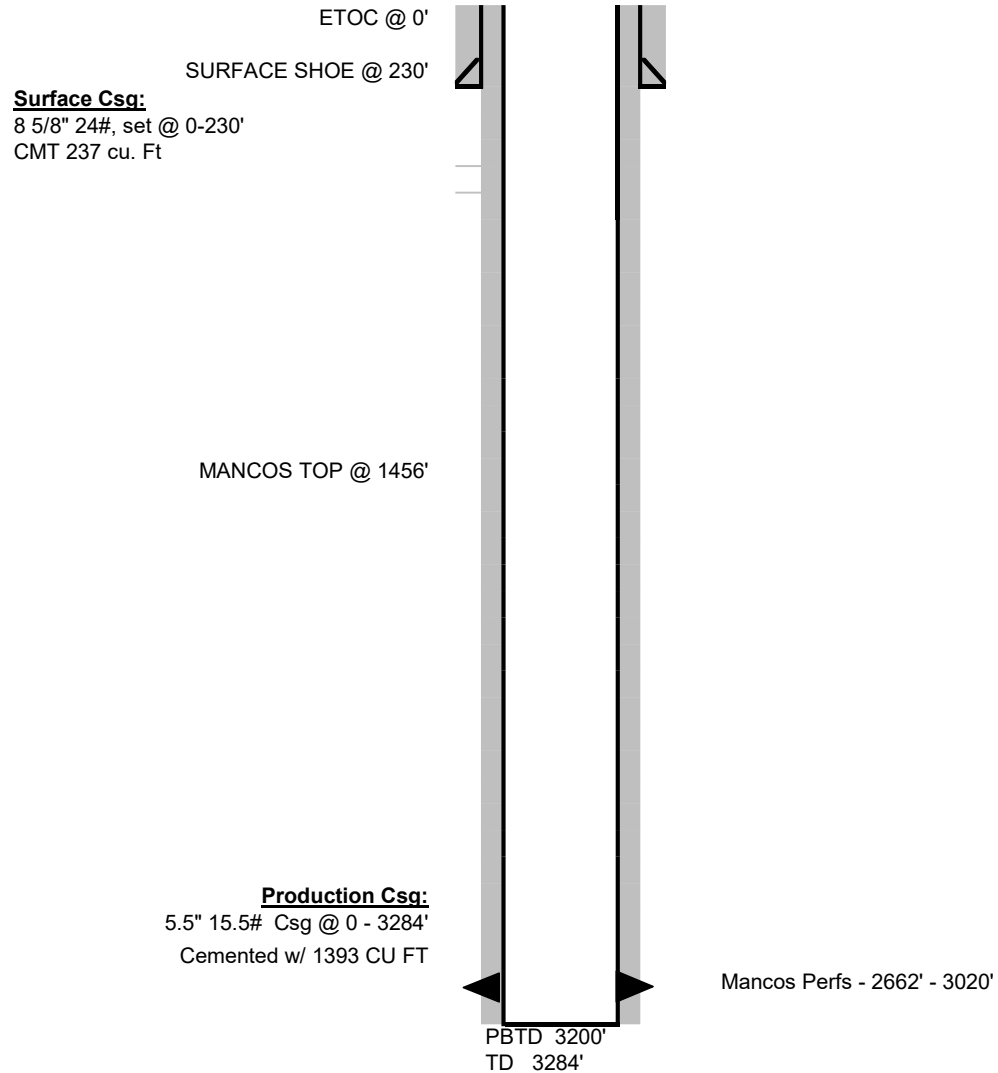
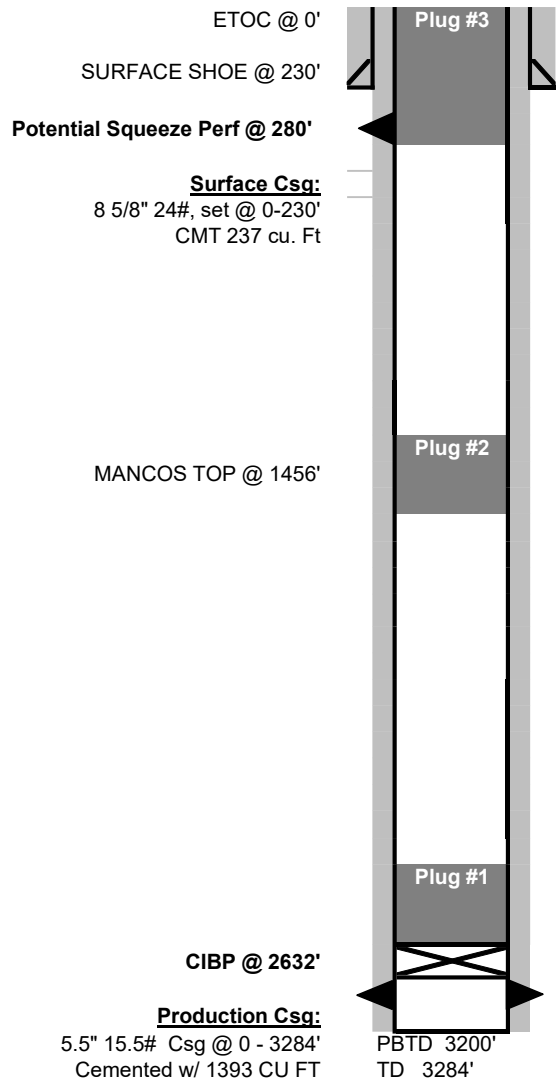


Utah Gas Corp.

WELL INFORMATION	
WELL NAME	DTU 1083
PROPERTY #	
DATE (WBD updated)/Author	06/13/2022, T.J. Shelton
API #	05-103-09342
STATUS	SI
SURFACE LOCATION	NWNW SEC. 23, T2S, R102W
PRODUCING AREA	RANGLEY
COUNTY, STATE	RIO BLANCO, COLORADO
GROUND ELEVATION	6701'
KB-GR MEASUREMENT	10'
COMMENTS/Author	47 SX



Utah Gas Corp.	
WELL INFORMATION	
WELL NAME	DTU 1083
PROPERTY #	
DATE (WBD updated)/Author	06/13/2022, TJ Shelton
API #	05-103-09342
STATUS	SI
SURFACE LOCATION	NWNW SEC. 23, T2S, R102W
PRODUCING AREA	RANGLEY
COUNTY, STATE	RIO BLANCO, COLORADO
GROUND ELEVATION	6701'
KB-GR MEASUREMENT	10'
COMMENTS/Author	54 SX/ 101SX



Plug # 3, Protect Surface + Casing Shoe

Cmt. Top 0', Btm 280'

Inside 34 SX Class G cement, 15.8ppg, 1.15 Yield,

6.55 Bbls Slurry, 36.8 CuFt

Outside 47 SX Class G cement, 15.8ppg, 1.15 Yield *IF CBL SHOWS TOC LOWER THAN 280'

Plug # 2, Mancos Isolation

Cmt. Top 1360', Btm 1475' (115')

Inside 14 SX Class G cement, 15.8ppg, 1.15 Yield,

2.87 Bbls Slurry, 16.1 CuFt

Plug # 1, Mancos Perf Isolation

Cmt. Top 2582', Btm 2632' (50')

Inside 6 SX Class G cement, 15.8ppg, 1.15 Yield,

1.23 Bbls Slurry, 6.90 CuFt

CIBP @ 2632'