

Inspection Photos
Operator: Hilcorp Energy
API: 067-08171
Date: 6/1/2022



Photo 1. View of the project area from the well pad entrance facing center.



Photo 2. View of the eastern project area from the northeastern corner facing southward. Revgetation is progressing largely with western wheatgrass, smooth brome, crested wheatgrass, and rubber rabbitbrush.



Photo 3. View of cobble BMP in the eastern project area where concentrated stormwater is flowing around the edge resulting in erosional channeling along the edge of the BMP.

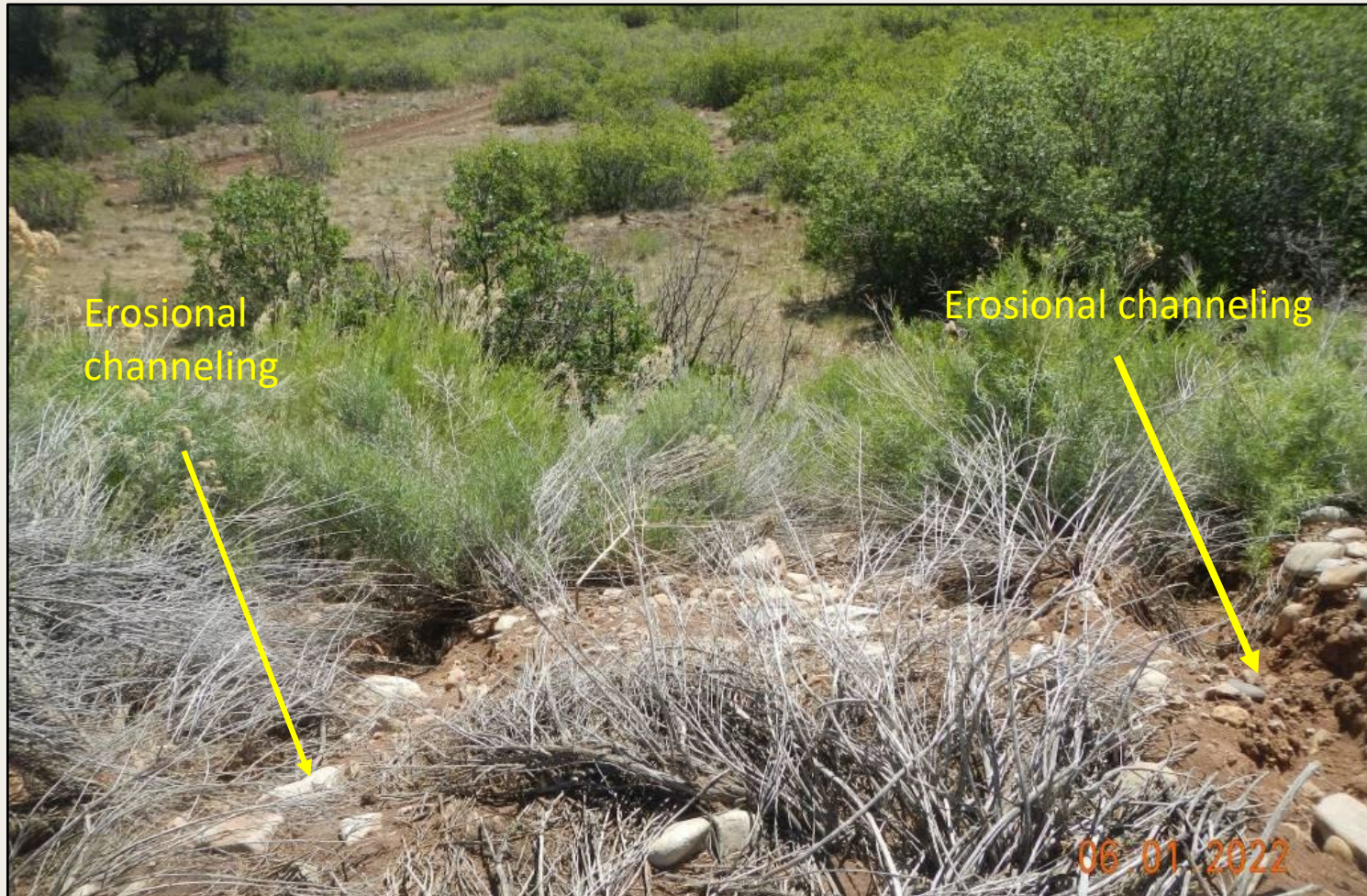


Photo 4. View of erosional channeling downslope from Photo 4, within the eastern fill slope (approx 10-12 inches wide and deep).



Photo 5. View of reference area comprised of gambel oak shrubland with Indian ricegrass, yucca, snakeweed, squirreltail, and *chaetopappa ericioides*.