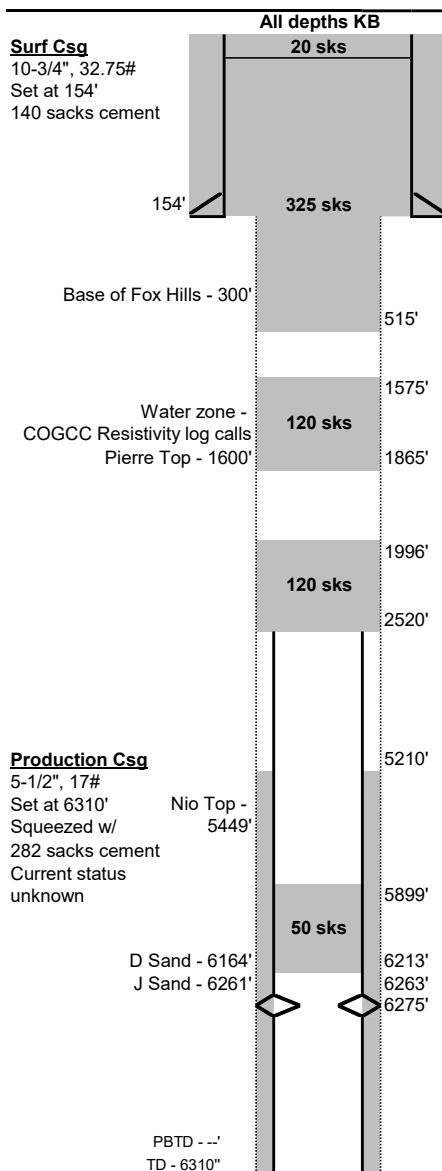




Final - As Plugged Wellbore Schematic

Well Name: Nay 1
Location: 2310' FNL, 2310' FEL, SWNE Sec 14, T9N, R58W
County: Weld
API #: 05-123-05660
Co-ordinates: 40.752405 / -103.829955
Elevations: GROUND: 4659'
KB: Unknown
PBTD: --
TD: 6310'

Date Prepared: 11/30/2021
Last Updated: 6/16/2022
Spud Date: 10/10/1951
Completion Start Date: N/A
Last Workover Date: N/A
Prepared by: Jake Van Bramer
Updated by: --



Hole Size
Unknown
0-200'

Unknown
154'-6310'

Surface Casing:

Unknown Hole Size, assumed to be 15-1/2"
Landed 10-3/4", 32.75# (assumed) casing at 154'
Cemented with 140 sks

Production Casing:

5-1/2" landed at 6310', squeezed with 282 sks
Cut and pulled at 2520'

Open Hole:

Hole size unknown, assumed 8-7/8"

Tubing:

None

Rods:

None

Perforations:

Perforations in casing from 6263-6275', squeezed with 282 sks of cement

P&A Plugs:

1. Plug of unknown size placed 50' above perms (est. 50 sks based on Zimith 1)
2. 120 sks Class G (1.15 cuft/sk) from 1996' to 2520' (TOC Tagged)
3. 120 sks Class G (1.15 cuft/sk) from 1575' to 1865' (TOC Tagged)
4. 325 sks Class G (1.15 cuft/sk) from 515' to surface
5. 20 sks Top Off

Additional Notes:

Made attempt to work into prod. casing was unable, received permission from COGCC to not tag existing plug and just set plug at the stub.

Initial Potential Test:

Formation Tops:

Niobrara 5449'
D Sand 6164'
J Sand 6261'

PBTD - --'
TD - 6310"