

From: Kris Rowe <krowe@hrlcomp.com>
Sent: Thursday, June 02, 2022 5:02 PM
To: mco@visionenergy.biz
Subject: Baldy Creek Fed 2-20 - Initial Site Invest (leaking wellhead spill)

Regarding the Baldy Creek Fed 2-20 spill, below is a quick summary of the findings;

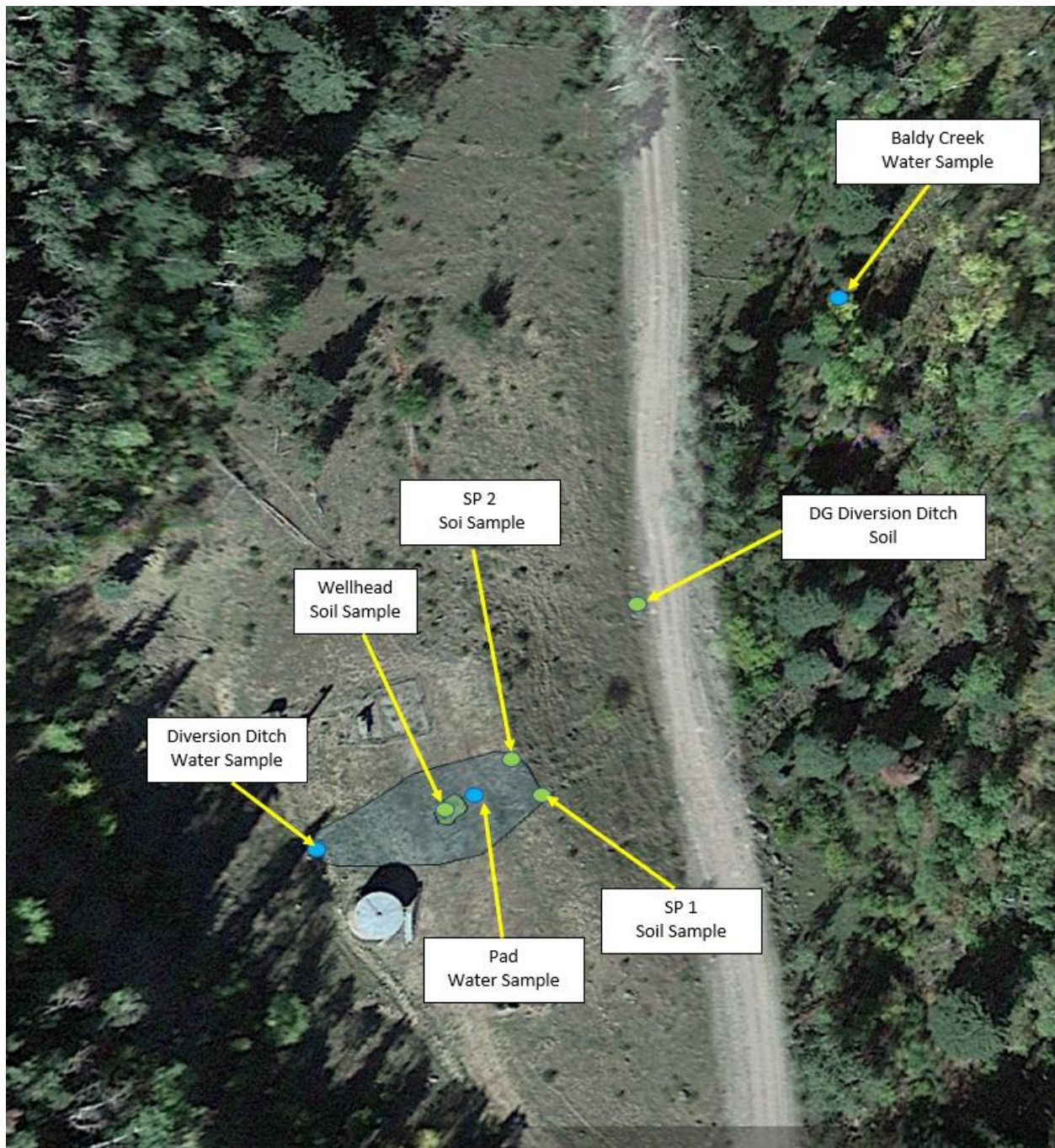
HRL arrived onsite on Thursday, June 2, 2022 to evaluate the location after it was reported by a BLM representative at 6:00 pm on June 1, 2022 that a well head was leaking liquids onto the pad from what appeared to be the results of wildlife (bear) knocking down the barrier around the wellhead and rubbing on the equipment, ultimately opening one of the valves. At the time of arrive, HRL did not observed any active leak and it was conveyed by Maralex/Vison Energy that field personnel were dispatched immediately to the site and stopped the leak.

A minor reddish/yellow discoloration was observed extending ~10-feet in length and 10-feet wide from the wellhead, with darker staining directly below the wellhead. The reddish/yellow discoloration appeared to be diluted by stormwater from snow melt running onto the pad from the diversion ditch, where wildlife appeared to have created a low point/cave in section, diverting the stormwater flow onto the pad instead of to the north. Visual observations of the free standing stormwater on the pad did not contain any sheen or appearance of hydrocarbon impacts, nor did field screening in the downgradient soils indicate hydrocarbons were present beyond 10-feet. In the area where the staining was present, a mild hydrocarbon odor was detected within the 1-2 inches of the soil. Field screening indicating hydrocarbon levels right at the COGCC thresholds in the 1-2 inches with PID readings of 165-210 ppm and below the COGCC thresholds at depths of 3-inches or more with field screening readings of 44-78 ppm.

Samples were collected the pooled water directly downgradient from the staining around the wellhead, as well as at the point where the stormwater is entering the pad from the diversion ditch. Soil samples were also collected from around the wellhead, at two downgradient points within the flow path of the stormwater where it crested the pad. An additional soil sample was collected from a downgradient section within the division ditch along the access road. Although the stormwater flow was contained to the diversion ditch along the access road and could not appear to run over the road due to terrain and gradient direction, a sample was collected from the Baldy Creek at a downgradient point to ensure no impacts to the creek have occurred.

Below is a rough draft map of the sample locations and attached are photographs of the site investigation onsite that occurred today (6/2/22).

Although the total volume released appears to be less than 1 bbl and below the COGCC reporting threshold, due to the stormwater potentially mixing with the fluids leaking from the wellhead, it is suggested that you submit the necessary COGCC notifications, which consist of a non-emergency e-mail within 24-hrs and an Initial Form 19 within 72 hours.



Kris Rowe | Environmental Program Manager

HRL Compliance Solutions, Inc.

2385 F 1/2 Road | Grand Junction, CO 81505

main 970.243.3271 Ex. 407 | mobile 970.261.2015

[Web](#) | [vCard](#) | [Map](#) | [f](#) | [in](#)



HRL
COMPLIANCE
SOLUTIONS

Confidentiality Note: This email and any attachments are confidential and only for the use as authorized by HRL Compliance Solutions, Inc. If you receive this message in error or are not the intended recipient, you should not retain, distribute, disclose or use any of this information. Permanently delete the e-mail and any attachments or copies.