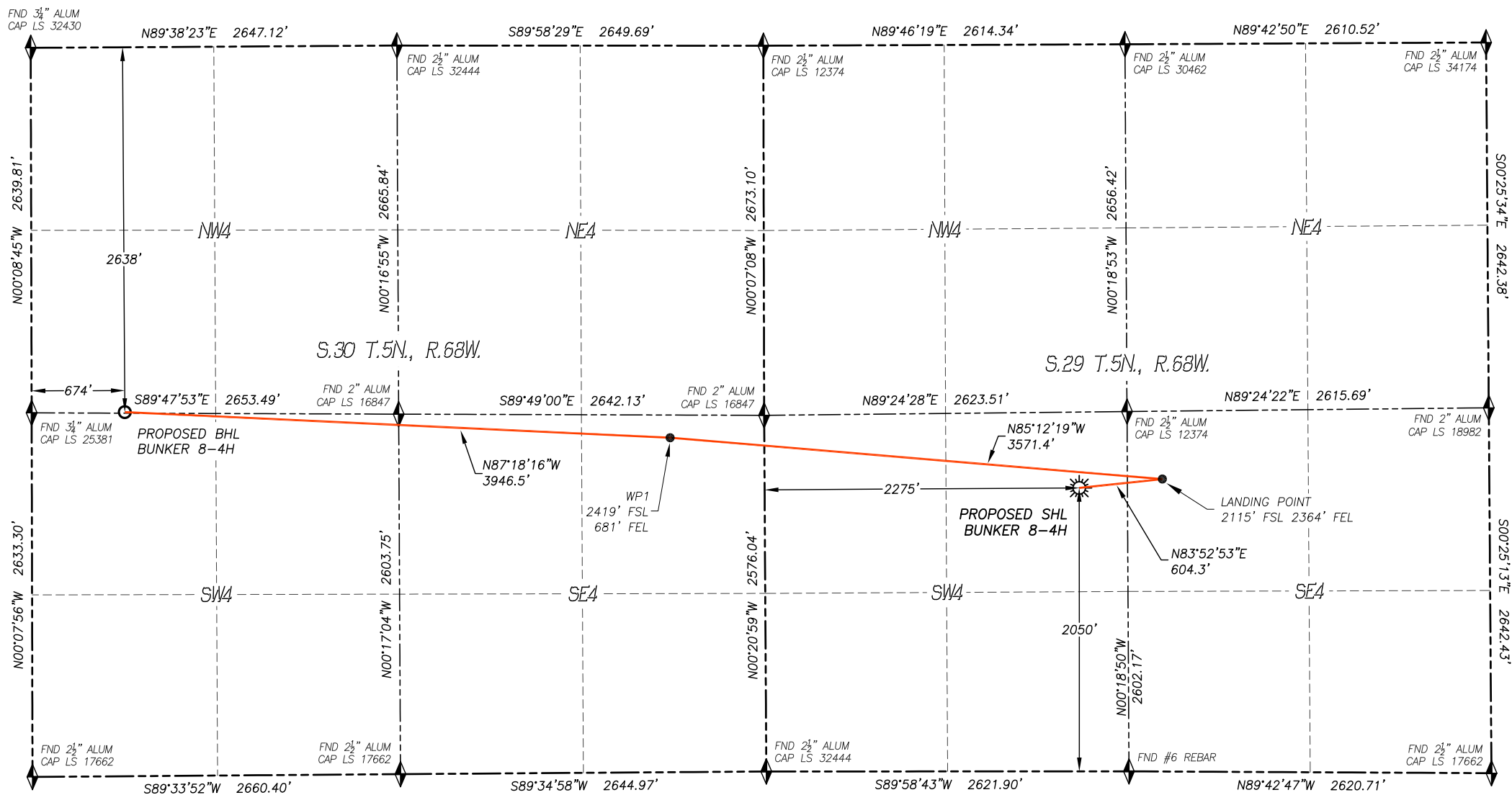


WELL LOCATION CERTIFICATE
BUNKER 8-4H
SECTION 29, TOWNSHIP 5 NORTH, RANGE 68 WEST OF THE 6TH P.M.



IN ACCORDANCE WITH A REQUEST FROM MAGPIE OIL AND GAS, DALEY LAND SURVEYING, INC. HAS DETERMINED THE SURFACE LOCATION OF THE BUNKER 8-4H WELL TO BE 2050' FSL, 2275' FWL, AS MEASURED AT NINETY (90) DEGREES FROM THE SECTION LINES OF SECTION 29, TOWNSHIP 5 NORTH, RANGE 68 WEST AND THE BOTTOM HOLE LOCATION TO BE 2638' FNL, 674' FWL, AS MEASURED AT NINETY (90) DEGREES FROM THE SECTION LINES OF SECTION 30, TOWNSHIP 5 NORTH, RANGE 68 WEST, OF THE 6TH PRINCIPAL MERIDIAN, LARIMER COUNTY, COLORADO.

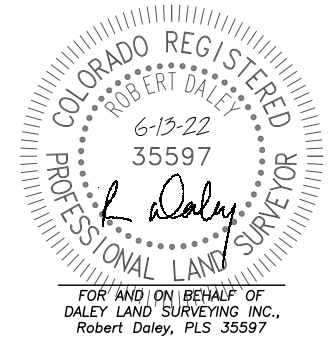
I HEREBY STATE THAT THIS WELL LOCATION CERTIFICATE WAS PREPARED BY ME OR UNDER MY DIRECT SUPERVISION, THAT THE WORK WAS COMPLETED ON 9/10/2018 FOR AND ON BEHALF OF MAGPIE OIL AND GAS, AND THAT THIS MAP DOES NOT REPRESENT A BOUNDARY SURVEY, IT IS NOT A LAND SURVEY PLAT OR AN IMPROVEMENT SURVEY PLAT AND IT IS NOT TO BE RELIED UPON FOR THE ESTABLISHMENT OF FENCE, BUILDING OR OTHER FUTURE IMPROVEMENT LINES.

- NOTES:**
- BEARINGS FOR THIS MAP ARE ASSUMED AND BASED UPON GPS OBSERVATIONS MADE BETWEEN MONUMENTS LOCATED AT THE SOUTH QUARTER CORNER AND THE SOUTHWEST CORNER OF SECTION 29, T.5N., R.68W.
 - HORIZONTAL DATUM IS NAD83.
 - VERTICAL DATUM IS NAVD88 AND ORIGINATES FROM THE LOCAL C.O.R.S. NETWORK, UTILIZING THE GEOID12A MODEL.
 - SEE LOCATION DRAWING FOR VISIBLE IMPROVEMENTS WITHIN 500' OF PROPOSED DISTURBED AREA.
 - SURFACE USE: WELL PAD/AGRICULTURAL.
 - INST. OPERATOR: KYLE DALEY.

NEAREST CULTURAL ITEMS:		NAD 83 LATITUDE AND LONGITUDE	
RESIDENTIAL BUILDING UNIT:		SURFACE LOCATION:	
BUILDING UNIT:	1988'± SE	LATITUDE:	N40.36948°
BUILDING:	1973'± NW	LONGITUDE:	W105.03201°
HIGH OCC. BLD. UNIT:	5280'±	ELEV:	4991'
DES. OUTSIDE ACTIVITY AREA:	5280'±	PDOP:	1.2
PUBLIC ROAD:	2199'± S	QTR/QTR:	NE4/SW4
ABOVE GROUND UTILITY:	2228'± W		
RAILROAD:	5280'±		
PROPERTY LINE:	348'± E	LANDING POINT/TPZ:	
SCHOOL FACILITY:	5280'±	LATITUDE:	N40.37052°
SCHOOL PROPERTY LINE:	5280'±	LONGITUDE:	W105.04262°
CHILD CARE CENTER:	5280'±	WP1:	
		LATITUDE:	N40.37108°
		LONGITUDE:	W105.05676°
		BOTTOM HOLE:	
		LATITUDE:	N40.37108°
		LONGITUDE:	W105.05676°

LEGEND

- FOUND MONUMENT
- CALCULATED POSITION
- PROPOSED WELL
- BOTTOM HOLE
- ABANDONED WELL
- EXISTING WELL
- TPZ TOP PRODUCING ZONE



DALEY LAND SURVEYING, INC.
17011 LINCOLN AVE. #301
PARKER, CO 80138
303.953.9841