

NOBLE ENERGY, INC



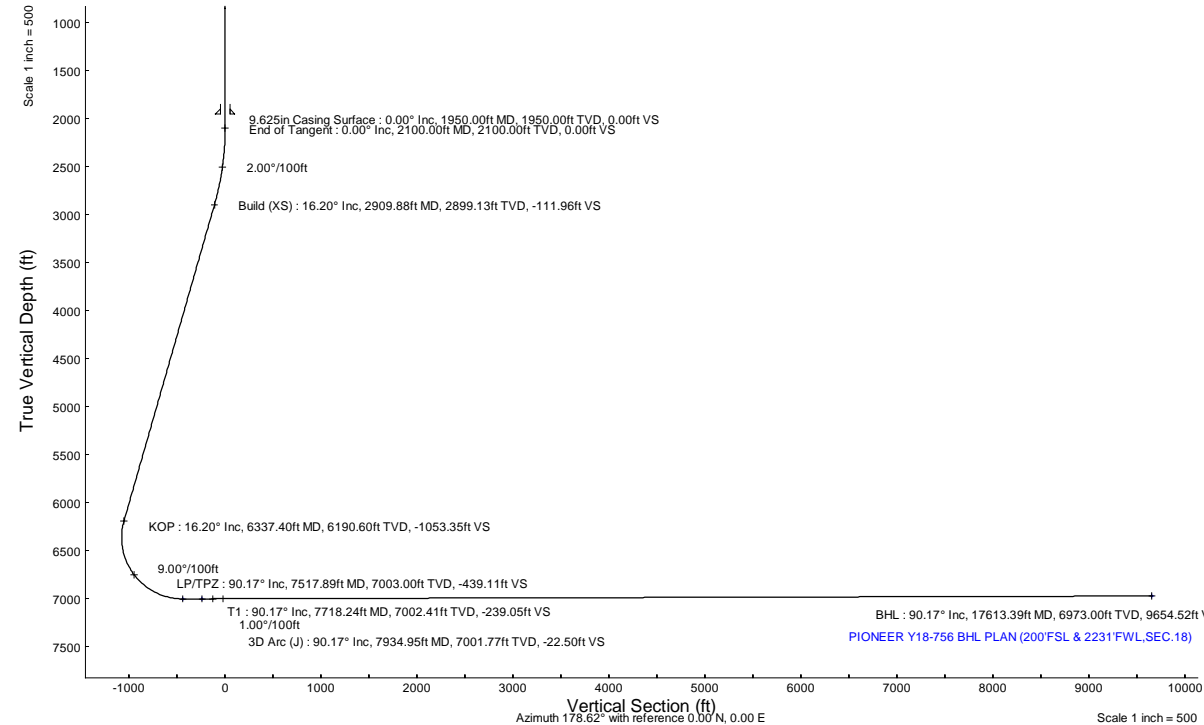
Location:	COLORADO	Slot:	SLOT#23 PIONEER Y18-756 (639'FNL & 2089'FWL, SEC.07)
Field:	WELD COUNTY (NOBLE NAD 83 GRID)	Well:	Pioneer Y18-756
Facility:	SEC.07-T02N-R64W	Wellbore:	Pioneer Y18-756 PWB

Plot reference wellpath is PIONEER Y18-756 (REV-1.0) PWP	Grid System: NAD83 / Lambert Colorado SP, Northern Zone (501), US feet
True vertical depths are referenced to (4883GL+30KB@4913RKB) (RKB)	North Reference: Grid north
Reference wellpath measured depths are referenced to (4883GL+30KB@4913RKB) (RKB)	Scale: True distance
(4883GL+30KB@4913RKB) (RKB) to Mean Sea Level: 4913 feet	Coordinates are in feet referenced to Slot
Mean Sea Level to Mud line (At Slot: SLOT#23 PIONEER Y18-756 (639'FNL & 2089'FWL, SEC.07)): 0 feet	Depths are in feet
Offset wellpath MDs are referenced to each path's default MD datum	Created by: gualater on 2022-05-23; Database: WA_Denver

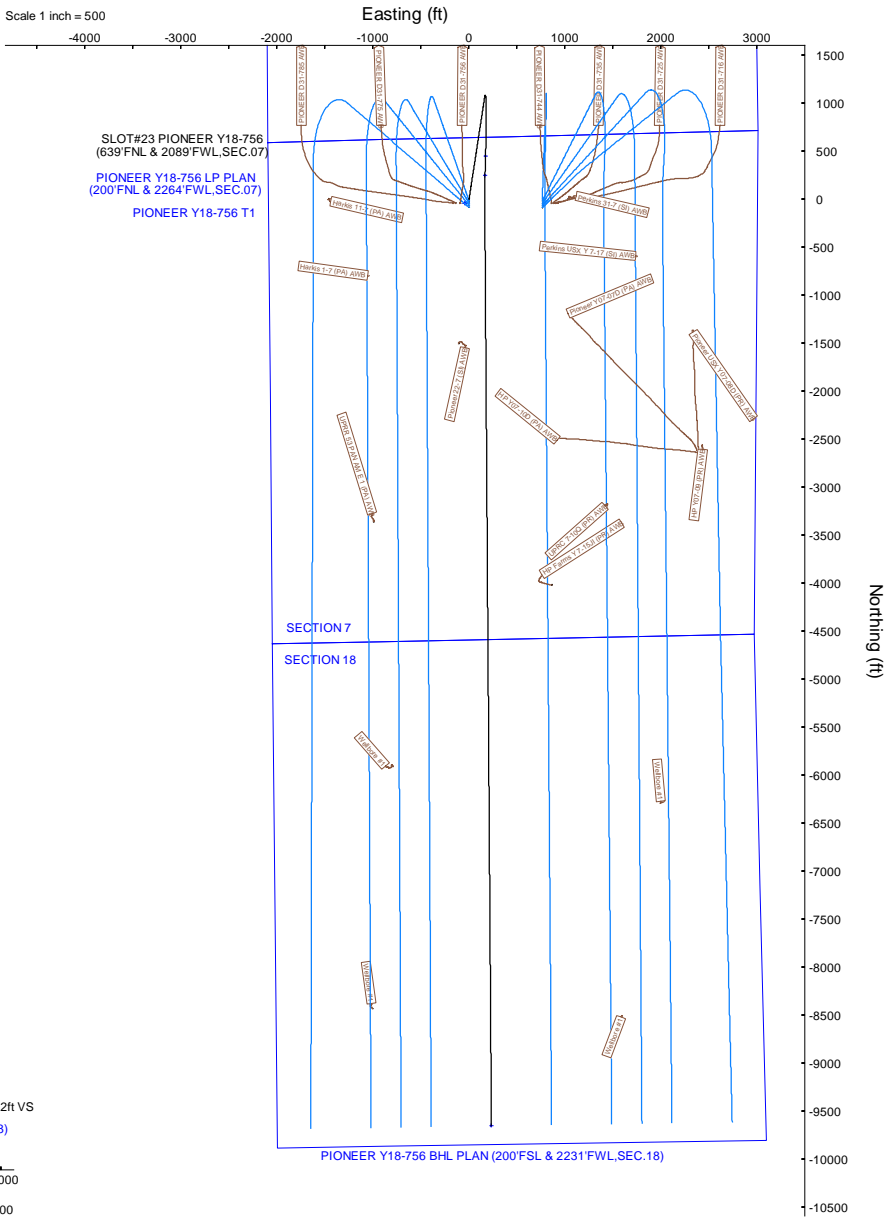
Location Information						
Facility Name		Grid East (US ft)	Grid North (US ft)	Latitude	Longitude	
SEC.07-T02N-R64W		3252658.032	1301719.599	40°09'29.0880"N	104°35'45.7080"W	
Slot	Local N (ft)	Local E (ft)	Grid East (US ft)	Grid North (US ft)	Latitude	Longitude
SLOT#23 PIONEER Y18-756 (639'FNL & 2089'FWL, SEC.07)	43.93	163.64	3252822.661	1301763.527	40°09'29.5056"N	104°35'43.5948"W
(4883GL+30KB@4913RKB) (RKB) to Mud line (At Slot: SLOT#23 PIONEER Y18-756 (639'FNL & 2089'FWL, SEC.07))				4913ft		
Mean Sea Level to Mud line (At Slot: SLOT#23 PIONEER Y18-756 (639'FNL & 2089'FWL, SEC.07))				0ft		
(4883GL+30KB@4913RKB) (RKB) to Mean Sea Level				4913ft		

Targets								
Name	MD (ft)	TVD (ft)	Local N (ft)	Local E (ft)	Grid East (US ft)	Grid North (US ft)	Latitude	Longitude
PIONEER Y18-756 SECTION 18	N/A	-2.00	-46.38	-46.21	3252776.45	1301717.15	40°09'29.0520"N	104°35'44.1960"W
PIONEER Y18-756 SECTION 7	N/A	-2.00	-46.38	-46.21	3252776.45	1301717.15	40°09'29.0520"N	104°35'44.1960"W
PIONEER Y18-756 BHL PLAN (200'FSL & 2231'FWL, SEC.18)	17613.39	6973.00	-9651.73	232.02	3253054.67	1292112.22	40°07'54.1081"N	104°35'41.8754"W
PIONEER Y18-756 T1	7718.24	7002.41	243.10	165.25	3252987.90	1302006.61	40°09'31.8911"N	104°35'41.4347"W
PIONEER Y18-756 LP PLAN (200'FNL & 2264'FWL, SEC.07)	7517.89	7003.00	443.35	171.39	3252994.04	1302206.86	40°09'33.8693"N	104°35'41.3292"W
SECTION LINES - SEC.06-T02N-R64W	N/A	7996.00	5866.26	-2140.60	3250682.16	1307629.53	40°10'27.6881"N	104°36'10.3986"W

Bottom Hole Location									
MD (ft)	Inc (°)	Az (°)	TVD (ft)	Local N (ft)	Local E (ft)	Grid East (US ft)	Grid North (US ft)	Latitude	Longitude
17613.39	90.170	179.590	6973.00	-9651.73	232.02	3253054.67	1292112.22	40°07'54.1081"N	104°35'41.8754"W



Well Profile Data								
Design Comment	MD (ft)	Inc (°)	Az (°)	TVD (ft)	Local N (ft)	Local E (ft)	DLS (°/100ft)	VS (ft)
SHL	30.00	0.000	8.690	30.00	0.00	0.00	0.00	0.00
End of Tangent	2100.00	0.000	8.690	2100.00	0.00	0.00	0.00	0.00
Build (XS)	2909.88	16.198	8.690	2899.13	112.41	17.18	2.00	-111.96
KOP	6337.40	16.198	8.690	6190.60	1057.54	161.64	0.00	-1053.35
LP/TPZ	7517.89	90.169	181.757	7003.00	443.35	171.39	9.00	-439.11
T1	7718.24	90.169	181.757	7002.41	243.10	165.25	0.00	-239.05
3D Arc (J)	7934.95	90.170	179.590	7001.77	26.42	162.70	1.00	-22.50
BHL	17613.39	90.170	179.590	6973.00	-9651.73	232.02	0.00	9654.52





Planned Wellpath Report

PIONEER Y18-756 (REV-1.0) PWP

Page 1 of 7



REFERENCE WELLPATH IDENTIFICATION			
Operator	NOBLE ENERGY, INC	Well	Pioneer Y18-756
Field	WELD COUNTY (NOBLE NAD 83 GRID)	API/Legal	
Facility	SEC.07-T02N-R64W	Wellbore	Pioneer Y18-756 PWB
Slot	SLOT#23 PIONEER Y18-756 (639'FNL & 2089'FWL,SEC.07)		

REPORT SETUP INFORMATION			
Projection System	NAD83 / Lambert Colorado SP, Northern Zone (501), US feet	Software System	WellArchitect® 6.0
North Reference	Grid	User	Guenaler
Scale	0.999958	Report Generated	5/23/2022 at 10:03:37 AM
Convergence at slot	0.58° East	Database	WA_Denver

WELLPATH LOCATION						
	Local coordinates		Grid coordinates		Geographic coordinates	
	North[ft]	East[ft]	Easting[US ft]	Northing[US ft]	Latitude	Longitude
Slot Location	43.93	163.64	3252822.66	1301763.53	40°09'29.5056"N	104°35'43.5948"W
Facility Reference Pt			3252659.03	1301719.60	40°09'29.0880"N	104°35'45.7080"W
Field Reference Pt			3000000.00	4454105.15	48°46'34.3150"N	105°30'0.0000"W

WELLPATH DATUM			
Calculation method	Minimum curvature	(4883'GL+30'KB@4913'RKB) (RKB) to Facility Vertical Datum	4913.00ft
Horizontal Reference Pt	Slot	(4883'GL+30'KB@4913'RKB) (RKB) to Mean Sea Level	4913.00ft
Vertical Reference Pt	(4883'GL+30'KB@4913'RKB) (RKB)	(4883'GL+30'KB@4913'RKB) (RKB) to Mud Line at Slot (SLOT#23 PIONEER Y18-756 (639'FNL & 2089'FWL,SEC.07))	4913.00ft
MD Reference Pt	(4883'GL+30'KB@4913'RKB) (RKB)	Section Origin	N 0.00, E 0.00 ft
Field Vertical Reference	Mean Sea Level	Section Azimuth	178.62°



Planned Wellpath Report
PIONEER Y18-756 (REV-1.0) PWP
Page 2 of 7



REFERENCE WELLPATH IDENTIFICATION			
Operator	NOBLE ENERGY, INC	Well	Pioneer Y18-756
Field	WELD COUNTY (NOBLE NAD 83 GRID)	API/Legal	
Facility	SEC.07-T02N-R64W	Wellbore	Pioneer Y18-756 PWB
Slot	SLOT#23 PIONEER Y18-756 (639'FNL & 2089'FWL,SEC.07)		

WELLPATH DATA (184 stations) † = interpolated, ‡ = extrapolated station										
MD [ft]	Inclination [°]	Azimuth [°]	TVD [ft]	Vert Sect [ft]	North [ft]	East [ft]	Latitude	Longitude	DLS [°/100ft]	Comments
0.00†	0.000	8.690	0.00	0.00	0.00	0.00	40°09'29.5056"N	104°35'43.5948"W	0.00	
30.00	0.000	8.690	30.00	0.00	0.00	0.00	40°09'29.5056"N	104°35'43.5948"W	0.00	SHL
130.00†	0.000	8.690	130.00	0.00	0.00	0.00	40°09'29.5056"N	104°35'43.5948"W	0.00	
230.00†	0.000	8.690	230.00	0.00	0.00	0.00	40°09'29.5056"N	104°35'43.5948"W	0.00	
330.00†	0.000	8.690	330.00	0.00	0.00	0.00	40°09'29.5056"N	104°35'43.5948"W	0.00	
430.00†	0.000	8.690	430.00	0.00	0.00	0.00	40°09'29.5056"N	104°35'43.5948"W	0.00	
530.00†	0.000	8.690	530.00	0.00	0.00	0.00	40°09'29.5056"N	104°35'43.5948"W	0.00	
630.00†	0.000	8.690	630.00	0.00	0.00	0.00	40°09'29.5056"N	104°35'43.5948"W	0.00	
730.00†	0.000	8.690	730.00	0.00	0.00	0.00	40°09'29.5056"N	104°35'43.5948"W	0.00	
830.00†	0.000	8.690	830.00	0.00	0.00	0.00	40°09'29.5056"N	104°35'43.5948"W	0.00	
930.00†	0.000	8.690	930.00	0.00	0.00	0.00	40°09'29.5056"N	104°35'43.5948"W	0.00	
1030.00†	0.000	8.690	1030.00	0.00	0.00	0.00	40°09'29.5056"N	104°35'43.5948"W	0.00	
1130.00†	0.000	8.690	1130.00	0.00	0.00	0.00	40°09'29.5056"N	104°35'43.5948"W	0.00	
1230.00†	0.000	8.690	1230.00	0.00	0.00	0.00	40°09'29.5056"N	104°35'43.5948"W	0.00	
1330.00†	0.000	8.690	1330.00	0.00	0.00	0.00	40°09'29.5056"N	104°35'43.5948"W	0.00	
1430.00†	0.000	8.690	1430.00	0.00	0.00	0.00	40°09'29.5056"N	104°35'43.5948"W	0.00	
1530.00†	0.000	8.690	1530.00	0.00	0.00	0.00	40°09'29.5056"N	104°35'43.5948"W	0.00	
1630.00†	0.000	8.690	1630.00	0.00	0.00	0.00	40°09'29.5056"N	104°35'43.5948"W	0.00	
1730.00†	0.000	8.690	1730.00	0.00	0.00	0.00	40°09'29.5056"N	104°35'43.5948"W	0.00	
1830.00†	0.000	8.690	1830.00	0.00	0.00	0.00	40°09'29.5056"N	104°35'43.5948"W	0.00	
1930.00†	0.000	8.690	1930.00	0.00	0.00	0.00	40°09'29.5056"N	104°35'43.5948"W	0.00	
2030.00†	0.000	8.690	2030.00	0.00	0.00	0.00	40°09'29.5056"N	104°35'43.5948"W	0.00	
2100.00	0.000	8.690	2100.00	0.00	0.00	0.00	40°09'29.5056"N	104°35'43.5948"W	0.00	End of Tangent
2130.00†	0.600	8.690	2130.00	-0.15	0.16	0.02	40°09'29.5071"N	104°35'43.5945"W	2.00	
2230.00†	2.600	8.690	2229.96	-2.90	2.92	0.45	40°09'29.5344"N	104°35'43.5887"W	2.00	
2330.00†	4.600	8.690	2329.75	-9.09	9.12	1.39	40°09'29.5956"N	104°35'43.5756"W	2.00	
2430.00†	6.600	8.690	2429.27	-18.69	18.77	2.87	40°09'29.6908"N	104°35'43.5554"W	2.00	
2530.00†	8.600	8.690	2528.39	-31.71	31.84	4.87	40°09'29.8197"N	104°35'43.5279"W	2.00	
2630.00†	10.600	8.690	2626.98	-48.13	48.33	7.39	40°09'29.9824"N	104°35'43.4933"W	2.00	
2730.00†	12.600	8.690	2724.93	-67.93	68.20	10.42	40°09'30.1785"N	104°35'43.4516"W	2.00	
2830.00†	14.600	8.690	2822.13	-91.08	91.44	13.98	40°09'30.4078"N	104°35'43.4028"W	2.00	
2909.88	16.198	8.690	2899.13	-111.96	112.41	17.18	40°09'30.6147"N	104°35'43.3588"W	2.00	Build (XS)
2930.00†	16.198	8.690	2918.46	-117.49	117.96	18.03	40°09'30.6694"N	104°35'43.3471"W	0.00	
3030.00†	16.198	8.690	3014.49	-144.96	145.53	22.24	40°09'30.9415"N	104°35'43.2892"W	0.00	
3130.00†	16.198	8.690	3110.52	-172.42	173.11	26.46	40°09'31.2135"N	104°35'43.2313"W	0.00	
3230.00†	16.198	8.690	3206.55	-199.89	200.68	30.67	40°09'31.4856"N	104°35'43.1734"W	0.00	
3330.00†	16.198	8.690	3302.58	-227.35	228.26	34.89	40°09'31.7576"N	104°35'43.1155"W	0.00	
3430.00†	16.198	8.690	3398.61	-254.82	255.83	39.10	40°09'32.0297"N	104°35'43.0576"W	0.00	
3530.00†	16.198	8.690	3494.64	-282.28	283.41	43.32	40°09'32.3017"N	104°35'42.9997"W	0.00	
3630.00†	16.198	8.690	3590.67	-309.75	310.98	47.53	40°09'32.5738"N	104°35'42.9418"W	0.00	
3730.00†	16.198	8.690	3686.70	-337.22	338.56	51.75	40°09'32.8458"N	104°35'42.8839"W	0.00	
3830.00†	16.198	8.690	3782.73	-364.68	366.13	55.96	40°09'33.1179"N	104°35'42.8260"W	0.00	
3930.00†	16.198	8.690	3878.76	-392.15	393.71	60.18	40°09'33.3900"N	104°35'42.7681"W	0.00	
4030.00†	16.198	8.690	3974.79	-419.61	421.28	64.39	40°09'33.6620"N	104°35'42.7102"W	0.00	
4130.00†	16.198	8.690	4070.82	-447.08	448.86	68.60	40°09'33.9341"N	104°35'42.6523"W	0.00	



Planned Wellpath Report
PIONEER Y18-756 (REV-1.0) PWP
Page 3 of 7



REFERENCE WELLPATH IDENTIFICATION			
Operator	NOBLE ENERGY, INC	Well	Pioneer Y18-756
Field	WELD COUNTY (NOBLE NAD 83 GRID)	API/Legal	
Facility	SEC.07-T02N-R64W	Wellbore	Pioneer Y18-756 PWB
Slot	SLOT#23 PIONEER Y18-756 (639'FNL & 2089'FWL,SEC.07)		

WELLPATH DATA (184 stations) † = interpolated, ‡ = extrapolated station										
MD [ft]	Inclination [°]	Azimuth [°]	TVD [ft]	Vert Sect [ft]	North [ft]	East [ft]	Latitude	Longitude	DLS [°/100ft]	Comments
4230.00†	16.198	8.690	4166.85	-474.54	476.43	72.82	40°09'34.2061"N	104°35'42.5944"W	0.00	
4330.00†	16.198	8.690	4262.88	-502.01	504.01	77.03	40°09'34.4782"N	104°35'42.5365"W	0.00	
4430.00†	16.198	8.690	4358.92	-529.47	531.58	81.25	40°09'34.7502"N	104°35'42.4786"W	0.00	
4530.00†	16.198	8.690	4454.95	-556.94	559.15	85.46	40°09'35.0223"N	104°35'42.4207"W	0.00	
4630.00†	16.198	8.690	4550.98	-584.40	586.73	89.68	40°09'35.2943"N	104°35'42.3627"W	0.00	
4730.00†	16.198	8.690	4647.01	-611.87	614.30	93.89	40°09'35.5664"N	104°35'42.3048"W	0.00	
4830.00†	16.198	8.690	4743.04	-639.34	641.88	98.11	40°09'35.8385"N	104°35'42.2469"W	0.00	
4930.00†	16.198	8.690	4839.07	-666.80	669.45	102.32	40°09'36.1105"N	104°35'42.1890"W	0.00	
5030.00†	16.198	8.690	4935.10	-694.27	697.03	106.54	40°09'36.3826"N	104°35'42.1311"W	0.00	
5130.00†	16.198	8.690	5031.13	-721.73	724.60	110.75	40°09'36.6546"N	104°35'42.0732"W	0.00	
5230.00†	16.198	8.690	5127.16	-749.20	752.18	114.97	40°09'36.9267"N	104°35'42.0153"W	0.00	
5330.00†	16.198	8.690	5223.19	-776.66	779.75	119.18	40°09'37.1987"N	104°35'41.9574"W	0.00	
5430.00†	16.198	8.690	5319.22	-804.13	807.33	123.40	40°09'37.4708"N	104°35'41.8995"W	0.00	
5530.00†	16.198	8.690	5415.25	-831.59	834.90	127.61	40°09'37.7428"N	104°35'41.8416"W	0.00	
5630.00†	16.198	8.690	5511.28	-859.06	862.48	131.82	40°09'38.0149"N	104°35'41.7837"W	0.00	
5730.00†	16.198	8.690	5607.31	-886.53	890.05	136.04	40°09'38.2870"N	104°35'41.7258"W	0.00	
5830.00†	16.198	8.690	5703.34	-913.99	917.63	140.25	40°09'38.5590"N	104°35'41.6679"W	0.00	
5930.00†	16.198	8.690	5799.37	-941.46	945.20	144.47	40°09'38.8311"N	104°35'41.6100"W	0.00	
6030.00†	16.198	8.690	5895.40	-968.92	972.78	148.68	40°09'39.1031"N	104°35'41.5521"W	0.00	
6130.00†	16.198	8.690	5991.44	-996.39	1000.35	152.90	40°09'39.3752"N	104°35'41.4942"W	0.00	
6230.00†	16.198	8.690	6087.47	-1023.85	1027.93	157.11	40°09'39.6472"N	104°35'41.4363"W	0.00	
6330.00†	16.198	8.690	6183.50	-1051.32	1055.50	161.33	40°09'39.9193"N	104°35'41.3783"W	0.00	
6337.40	16.198	8.690	6190.60	-1053.35	1057.54	161.64	40°09'39.9394"N	104°35'41.3741"W	0.00	KOP
6430.00†	7.996	16.218	6281.07	-1072.24	1076.53	165.40	40°09'40.1266"N	104°35'41.3232"W	9.00	
6530.00†	2.371	123.816	6380.75	-1077.69	1082.06	169.06	40°09'40.1810"N	104°35'41.2752"W	9.00	
6630.00†	10.452	170.783	6480.08	-1067.49	1071.94	172.24	40°09'40.0806"N	104°35'41.2356"W	9.00	
6730.00†	19.359	176.018	6576.62	-1041.89	1046.40	174.85	40°09'39.8280"N	104°35'41.2054"W	9.00	
6830.00†	28.324	178.018	6668.00	-1001.53	1006.07	176.83	40°09'39.4293"N	104°35'41.1852"W	9.00	
6930.00†	37.305	179.111	6751.96	-947.40	951.95	178.12	40°09'38.8944"N	104°35'41.1757"W	9.00	
7030.00†	46.292	179.828	6826.43	-880.82	885.37	178.70	40°09'38.2364"N	104°35'41.1770"W	9.00	
7130.00†	55.283	180.357	6889.58	-803.45	807.97	178.55	40°09'37.4716"N	104°35'41.1890"W	9.00	
7230.00†	64.276	180.782	6939.87	-717.18	721.66	177.68	40°09'36.6188"N	104°35'41.2116"W	9.00	
7330.00†	73.269	181.146	6976.04	-624.14	628.55	176.10	40°09'35.6989"N	104°35'41.2442"W	9.00	
7430.00†	82.263	181.478	6997.20	-526.62	530.95	173.86	40°09'34.7346"N	104°35'41.2859"W	9.00	
7517.89	90.169	181.757	7003.00 ¹	-439.11	443.35	171.39	40°09'33.8693"N	104°35'41.3292"W	9.00	LP/TPZ
7530.00†	90.169	181.757	7002.96	-427.01	431.25	171.02	40°09'33.7498"N	104°35'41.3356"W	0.00	
7630.00†	90.169	181.757	7002.67	-327.16	331.30	167.95	40°09'32.7624"N	104°35'41.3882"W	0.00	
7718.24	90.169	181.757	7002.41 ²	-239.05	243.10	165.25	40°09'31.8911"N	104°35'41.4347"W	0.00	T1
7730.00†	90.169	181.639	7002.38	-227.31	231.34	164.90	40°09'31.7750"N	104°35'41.4407"W	1.00	
7830.00†	90.170	180.639	7002.08	-127.41	131.36	162.91	40°09'30.7873"N	104°35'41.4794"W	1.00	
7930.00†	90.170	179.639	7001.78	-27.45	31.37	162.67	40°09'29.7992"N	104°35'41.4957"W	1.00	
7934.95	90.170	179.590	7001.77	-22.50	26.42	162.70	40°09'29.7502"N	104°35'41.4959"W	1.00	3D Arc (J)
8030.00†	90.170	179.590	7001.49	72.54	-68.63	163.38	40°09'28.8110"N	104°35'41.4997"W	0.00	
8130.00†	90.170	179.590	7001.19	172.52	-168.63	164.10	40°09'27.8228"N	104°35'41.5036"W	0.00	
8230.00†	90.170	179.590	7000.89	272.51	-268.62	164.81	40°09'26.8346"N	104°35'41.5075"W	0.00	



Planned Wellpath Report
PIONEER Y18-756 (REV-1.0) PWP
Page 4 of 7



REFERENCE WELLPATH IDENTIFICATION			
Operator	NOBLE ENERGY, INC	Well	Pioneer Y18-756
Field	WELD COUNTY (NOBLE NAD 83 GRID)	API/Legal	
Facility	SEC.07-T02N-R64W	Wellbore	Pioneer Y18-756 PWB
Slot	SLOT#23 PIONEER Y18-756 (639'FNL & 2089'FWL,SEC.07)		

WELLPATH DATA (184 stations) † = interpolated, ‡ = extrapolated station										
MD [ft]	Inclination [°]	Azimuth [°]	TVD [ft]	Vert Sect [ft]	North [ft]	East [ft]	Latitude	Longitude	DLS [°/100ft]	Comments
8330.00†	90.170	179.590	7000.59	372.49	-368.62	165.53	40°09'25.8464"N	104°35'41.5114"W	0.00	
8430.00†	90.170	179.590	7000.30	472.48	-468.62	166.25	40°09'24.8582"N	104°35'41.5154"W	0.00	
8530.00†	90.170	179.590	7000.00	572.46	-568.61	166.96	40°09'23.8700"N	104°35'41.5193"W	0.00	
8630.00†	90.170	179.590	6999.70	672.45	-668.61	167.68	40°09'22.8818"N	104°35'41.5232"W	0.00	
8730.00†	90.170	179.590	6999.41	772.43	-768.61	168.39	40°09'21.8936"N	104°35'41.5271"W	0.00	
8830.00†	90.170	179.590	6999.11	872.42	-868.61	169.11	40°09'20.9054"N	104°35'41.5311"W	0.00	
8930.00†	90.170	179.590	6998.81	972.40	-968.60	169.83	40°09'19.9172"N	104°35'41.5350"W	0.00	
9030.00†	90.170	179.590	6998.51	1072.39	-1068.60	170.54	40°09'18.9290"N	104°35'41.5389"W	0.00	
9130.00†	90.170	179.590	6998.22	1172.38	-1168.60	171.26	40°09'17.9408"N	104°35'41.5428"W	0.00	
9230.00†	90.170	179.590	6997.92	1272.36	-1268.59	171.98	40°09'16.9526"N	104°35'41.5467"W	0.00	
9330.00†	90.170	179.590	6997.62	1372.35	-1368.59	172.69	40°09'15.9644"N	104°35'41.5507"W	0.00	
9430.00†	90.170	179.590	6997.32	1472.33	-1468.59	173.41	40°09'14.9762"N	104°35'41.5546"W	0.00	
9530.00†	90.170	179.590	6997.03	1572.32	-1568.58	174.12	40°09'13.9880"N	104°35'41.5585"W	0.00	
9630.00†	90.170	179.590	6996.73	1672.30	-1668.58	174.84	40°09'12.9998"N	104°35'41.5624"W	0.00	
9730.00†	90.170	179.590	6996.43	1772.29	-1768.58	175.56	40°09'12.0116"N	104°35'41.5663"W	0.00	
9830.00†	90.170	179.590	6996.14	1872.27	-1868.58	176.27	40°09'11.0234"N	104°35'41.5703"W	0.00	
9930.00†	90.170	179.590	6995.84	1972.26	-1968.57	176.99	40°09'10.0352"N	104°35'41.5742"W	0.00	
10030.00†	90.170	179.590	6995.54	2072.24	-2068.57	177.71	40°09'9.0470"N	104°35'41.5781"W	0.00	
10130.00†	90.170	179.590	6995.24	2172.23	-2168.57	178.42	40°09'8.0588"N	104°35'41.5820"W	0.00	
10230.00†	90.170	179.590	6994.95	2272.21	-2268.56	179.14	40°09'7.0706"N	104°35'41.5860"W	0.00	
10330.00†	90.170	179.590	6994.65	2372.20	-2368.56	179.85	40°09'6.0824"N	104°35'41.5899"W	0.00	
10430.00†	90.170	179.590	6994.35	2472.18	-2468.56	180.57	40°09'5.0942"N	104°35'41.5938"W	0.00	
10530.00†	90.170	179.590	6994.06	2572.17	-2568.55	181.29	40°09'4.1060"N	104°35'41.5977"W	0.00	
10630.00†	90.170	179.590	6993.76	2672.15	-2668.55	182.00	40°09'3.1178"N	104°35'41.6016"W	0.00	
10730.00†	90.170	179.590	6993.46	2772.14	-2768.55	182.72	40°09'2.1296"N	104°35'41.6056"W	0.00	
10830.00†	90.170	179.590	6993.16	2872.13	-2868.55	183.43	40°09'1.1414"N	104°35'41.6095"W	0.00	
10930.00†	90.170	179.590	6992.87	2972.11	-2968.54	184.15	40°09'0.1532"N	104°35'41.6134"W	0.00	
11030.00†	90.170	179.590	6992.57	3072.10	-3068.54	184.87	40°08'59.1651"N	104°35'41.6173"W	0.00	
11130.00†	90.170	179.590	6992.27	3172.08	-3168.54	185.58	40°08'58.1769"N	104°35'41.6213"W	0.00	
11230.00†	90.170	179.590	6991.97	3272.07	-3268.53	186.30	40°08'57.1887"N	104°35'41.6252"W	0.00	
11330.00†	90.170	179.590	6991.68	3372.05	-3368.53	187.02	40°08'56.2005"N	104°35'41.6291"W	0.00	
11430.00†	90.170	179.590	6991.38	3472.04	-3468.53	187.73	40°08'55.2123"N	104°35'41.6330"W	0.00	
11530.00†	90.170	179.590	6991.08	3572.02	-3568.52	188.45	40°08'54.2241"N	104°35'41.6369"W	0.00	
11630.00†	90.170	179.590	6990.79	3672.01	-3668.52	189.16	40°08'53.2359"N	104°35'41.6409"W	0.00	
11730.00†	90.170	179.590	6990.49	3771.99	-3768.52	189.88	40°08'52.2477"N	104°35'41.6448"W	0.00	
11830.00†	90.170	179.590	6990.19	3871.98	-3868.52	190.60	40°08'51.2595"N	104°35'41.6487"W	0.00	
11930.00†	90.170	179.590	6989.89	3971.96	-3968.51	191.31	40°08'50.2713"N	104°35'41.6526"W	0.00	
12030.00†	90.170	179.590	6989.60	4071.95	-4068.51	192.03	40°08'49.2831"N	104°35'41.6565"W	0.00	
12130.00†	90.170	179.590	6989.30	4171.93	-4168.51	192.74	40°08'48.2949"N	104°35'41.6605"W	0.00	
12230.00†	90.170	179.590	6989.00	4271.92	-4268.50	193.46	40°08'47.3067"N	104°35'41.6644"W	0.00	
12330.00†	90.170	179.590	6988.70	4371.91	-4368.50	194.18	40°08'46.3185"N	104°35'41.6683"W	0.00	
12430.00†	90.170	179.590	6988.41	4471.89	-4468.50	194.89	40°08'45.3303"N	104°35'41.6722"W	0.00	
12530.00†	90.170	179.590	6988.11	4571.88	-4568.49	195.61	40°08'44.3421"N	104°35'41.6761"W	0.00	
12630.00†	90.170	179.590	6987.81	4671.86	-4668.49	196.33	40°08'43.3539"N	104°35'41.6801"W	0.00	
12730.00†	90.170	179.590	6987.52	4771.85	-4768.49	197.04	40°08'42.3657"N	104°35'41.6840"W	0.00	



Planned Wellpath Report
PIONEER Y18-756 (REV-1.0) PWP
Page 5 of 7



REFERENCE WELLPATH IDENTIFICATION			
Operator	NOBLE ENERGY, INC	Well	Pioneer Y18-756
Field	WELD COUNTY (NOBLE NAD 83 GRID)	API/Legal	
Facility	SEC.07-T02N-R64W	Wellbore	Pioneer Y18-756 PWB
Slot	SLOT#23 PIONEER Y18-756 (639'FNL & 2089'FWL,SEC.07)		

WELLPATH DATA (184 stations) † = interpolated, ‡ = extrapolated station										
MD [ft]	Inclination [°]	Azimuth [°]	TVD [ft]	Vert Sect [ft]	North [ft]	East [ft]	Latitude	Longitude	DLS [°/100ft]	Comments
12830.00†	90.170	179.590	6987.22	4871.83	-4868.49	197.76	40°08'41.3775"N	104°35'41.6879"W	0.00	
12930.00†	90.170	179.590	6986.92	4971.82	-4968.48	198.47	40°08'40.3893"N	104°35'41.6918"W	0.00	
13030.00†	90.170	179.590	6986.62	5071.80	-5068.48	199.19	40°08'39.4011"N	104°35'41.6958"W	0.00	
13130.00†	90.170	179.590	6986.33	5171.79	-5168.48	199.91	40°08'38.4129"N	104°35'41.6997"W	0.00	
13230.00†	90.170	179.590	6986.03	5271.77	-5268.47	200.62	40°08'37.4247"N	104°35'41.7036"W	0.00	
13330.00†	90.170	179.590	6985.73	5371.76	-5368.47	201.34	40°08'36.4365"N	104°35'41.7075"W	0.00	
13430.00†	90.170	179.590	6985.43	5471.74	-5468.47	202.06	40°08'35.4483"N	104°35'41.7114"W	0.00	
13530.00†	90.170	179.590	6985.14	5571.73	-5568.46	202.77	40°08'34.4601"N	104°35'41.7154"W	0.00	
13630.00†	90.170	179.590	6984.84	5671.71	-5668.46	203.49	40°08'33.4719"N	104°35'41.7193"W	0.00	
13730.00†	90.170	179.590	6984.54	5771.70	-5768.46	204.20	40°08'32.4837"N	104°35'41.7232"W	0.00	
13830.00†	90.170	179.590	6984.25	5871.69	-5868.46	204.92	40°08'31.4955"N	104°35'41.7271"W	0.00	
13930.00†	90.170	179.590	6983.95	5971.67	-5968.45	205.64	40°08'30.5073"N	104°35'41.7310"W	0.00	
14030.00†	90.170	179.590	6983.65	6071.66	-6068.45	206.35	40°08'29.5191"N	104°35'41.7350"W	0.00	
14130.00†	90.170	179.590	6983.35	6171.64	-6168.45	207.07	40°08'28.5309"N	104°35'41.7389"W	0.00	
14230.00†	90.170	179.590	6983.06	6271.63	-6268.44	207.78	40°08'27.5427"N	104°35'41.7428"W	0.00	
14330.00†	90.170	179.590	6982.76	6371.61	-6368.44	208.50	40°08'26.5545"N	104°35'41.7467"W	0.00	
14430.00†	90.170	179.590	6982.46	6471.60	-6468.44	209.22	40°08'25.5663"N	104°35'41.7506"W	0.00	
14530.00†	90.170	179.590	6982.17	6571.58	-6568.43	209.93	40°08'24.5781"N	104°35'41.7546"W	0.00	
14630.00†	90.170	179.590	6981.87	6671.57	-6668.43	210.65	40°08'23.5899"N	104°35'41.7585"W	0.00	
14730.00†	90.170	179.590	6981.57	6771.55	-6768.43	211.37	40°08'22.6017"N	104°35'41.7624"W	0.00	
14830.00†	90.170	179.590	6981.27	6871.54	-6868.43	212.08	40°08'21.6135"N	104°35'41.7663"W	0.00	
14930.00†	90.170	179.590	6980.98	6971.52	-6968.42	212.80	40°08'20.6253"N	104°35'41.7702"W	0.00	
15030.00†	90.170	179.590	6980.68	7071.51	-7068.42	213.51	40°08'19.6371"N	104°35'41.7742"W	0.00	
15130.00†	90.170	179.590	6980.38	7171.49	-7168.42	214.23	40°08'18.6489"N	104°35'41.7781"W	0.00	
15230.00†	90.170	179.590	6980.08	7271.48	-7268.41	214.95	40°08'17.6607"N	104°35'41.7820"W	0.00	
15330.00†	90.170	179.590	6979.79	7371.47	-7368.41	215.66	40°08'16.6725"N	104°35'41.7859"W	0.00	
15430.00†	90.170	179.590	6979.49	7471.45	-7468.41	216.38	40°08'15.6843"N	104°35'41.7898"W	0.00	
15530.00†	90.170	179.590	6979.19	7571.44	-7568.40	217.09	40°08'14.6961"N	104°35'41.7938"W	0.00	
15630.00†	90.170	179.590	6978.90	7671.42	-7668.40	217.81	40°08'13.7079"N	104°35'41.7977"W	0.00	
15730.00†	90.170	179.590	6978.60	7771.41	-7768.40	218.53	40°08'12.7197"N	104°35'41.8016"W	0.00	
15830.00†	90.170	179.590	6978.30	7871.39	-7868.40	219.24	40°08'11.7315"N	104°35'41.8055"W	0.00	
15930.00†	90.170	179.590	6978.00	7971.38	-7968.39	219.96	40°08'10.7433"N	104°35'41.8094"W	0.00	
16030.00†	90.170	179.590	6977.71	8071.36	-8068.39	220.68	40°08'9.7551"N	104°35'41.8134"W	0.00	
16130.00†	90.170	179.590	6977.41	8171.35	-8168.39	221.39	40°08'8.7669"N	104°35'41.8173"W	0.00	
16230.00†	90.170	179.590	6977.11	8271.33	-8268.38	222.11	40°08'7.7787"N	104°35'41.8212"W	0.00	
16330.00†	90.170	179.590	6976.81	8371.32	-8368.38	222.82	40°08'6.7905"N	104°35'41.8251"W	0.00	
16430.00†	90.170	179.590	6976.52	8471.30	-8468.38	223.54	40°08'5.8023"N	104°35'41.8290"W	0.00	
16530.00†	90.170	179.590	6976.22	8571.29	-8568.37	224.26	40°08'4.8141"N	104°35'41.8330"W	0.00	
16630.00†	90.170	179.590	6975.92	8671.27	-8668.37	224.97	40°08'3.8259"N	104°35'41.8369"W	0.00	
16730.00†	90.170	179.590	6975.63	8771.26	-8768.37	225.69	40°08'2.8377"N	104°35'41.8408"W	0.00	
16830.00†	90.170	179.590	6975.33	8871.25	-8868.37	226.41	40°08'1.8495"N	104°35'41.8447"W	0.00	
16930.00†	90.170	179.590	6975.03	8971.23	-8968.36	227.12	40°08'0.8613"N	104°35'41.8486"W	0.00	
17030.00†	90.170	179.590	6974.73	9071.22	-9068.36	227.84	40°07'59.8731"N	104°35'41.8526"W	0.00	
17130.00†	90.170	179.590	6974.44	9171.20	-9168.36	228.55	40°07'58.8849"N	104°35'41.8565"W	0.00	
17230.00†	90.170	179.590	6974.14	9271.19	-9268.35	229.27	40°07'57.8967"N	104°35'41.8604"W	0.00	



Planned Wellpath Report
PIONEER Y18-756 (REV-1.0) PWP
Page 6 of 7



REFERENCE WELLPATH IDENTIFICATION			
Operator	NOBLE ENERGY, INC	Well	Pioneer Y18-756
Field	WELD COUNTY (NOBLE NAD 83 GRID)	API/Legal	
Facility	SEC.07-T02N-R64W	Wellbore	Pioneer Y18-756 PWB
Slot	SLOT#23 PIONEER Y18-756 (639'FNL & 2089'FWL,SEC.07)		

WELLPATH DATA (184 stations) † = interpolated, ‡ = extrapolated station										
MD [ft]	Inclination [°]	Azimuth [°]	TVD [ft]	Vert Sect [ft]	North [ft]	East [ft]	Latitude	Longitude	DLS [°/100ft]	Comments
17330.00†	90.170	179.590	6973.84	9371.17	-9368.35	229.99	40°07'56.9085"N	104°35'41.8643"W	0.00	
17430.00†	90.170	179.590	6973.55	9471.16	-9468.35	230.70	40°07'55.9203"N	104°35'41.8682"W	0.00	
17530.00†	90.170	179.590	6973.25	9571.14	-9568.34	231.42	40°07'54.9321"N	104°35'41.8722"W	0.00	
17613.39	90.170	179.590	6973.00‡	9654.52	-9651.73	232.02	40°07'54.1081"N	104°35'41.8754"W	0.00	BHL

HOLE & CASING SECTIONS - Ref Wellbore: Pioneer Y18-756 PWB Ref Wellpath: PIONEER Y18-756 (REV-1.0) PWP									
String/Diameter	Start MD [ft]	End MD [ft]	Interval [ft]	Start TVD [ft]	End TVD [ft]	Start N/S [ft]	Start E/W [ft]	End N/S [ft]	End E/W [ft]
9.625in Casing Surface	30.00	1950.00	1920.00	30.00	1950.00	0.00	0.00	0.00	0.00

TARGETS									
Name	MD [ft]	TVD [ft]	North [ft]	East [ft]	Grid East [US ft]	Grid North [US ft]	Latitude	Longitude	Shape
PIONEER Y18-785 SECTION 18	N/A	-2.00	-46.38	-46.21	3252776.45	1301717.15	40°09'29.0520"N	104°35'44.1960"W	polygon
	2D Polygon: dimensions not calculated								
PIONEER Y18-785 SECTION 7	N/A	-2.00	-46.38	-46.21	3252776.45	1301717.15	40°09'29.0520"N	104°35'44.1960"W	polygon
	2D Polygon: dimensions not calculated								
3) PIONEER Y18-756 BHL PLAN (200'FSL & 2231'FWL,SEC.18)	17613.39	6973.00	-9651.73	232.02	3253054.67	1292112.22	40°07'54.1081"N	104°35'41.8754"W	point
2) PIONEER Y18-756 T1	7718.24	7002.41	243.10	165.25	3252987.90	1302006.61	40°09'31.8911"N	104°35'41.4347"W	point
1) PIONEER Y18-756 LP PLAN (200'FNL & 2264'FWL,SEC.07)	7517.89	7003.00	443.35	171.39	3252994.04	1302206.86	40°09'33.8693"N	104°35'41.3292"W	point
SECTION LINES - SEC.06-T02N-R64W	N/A	7996.00	5866.26	-2140.60	3250682.16	1307629.53	40°10'27.6881"N	104°36'10.3986"W	polygon
	2D Polygon: dimensions not calculated								

SURVEY PROGRAM - Ref Wellbore: Pioneer Y18-756 PWB Ref Wellpath: PIONEER Y18-756 (REV-1.0) PWP				
Start MD [ft]	End MD [ft]	Positional Uncertainty Model	Log Name/Comment	Wellbore
30.00	1950.00	Gyrodatta 2015 - GC+DROP+COND		Pioneer Y18-756 PWB
1950.00	17628.90	OWSG MWD rev2 (MS+IFR1)		Pioneer Y18-756 PWB



Planned Wellpath Report

PIONEER Y18-756 (REV-1.0) PWP

Page 7 of 7



REFERENCE WELLPATH IDENTIFICATION			
Operator	NOBLE ENERGY, INC	Well	Pioneer Y18-756
Field	WELD COUNTY (NOBLE NAD 83 GRID)	API/Legal	
Facility	SEC.07-T02N-R64W	Wellbore	Pioneer Y18-756 PWB
Slot	SLOT#23 PIONEER Y18-756 (639'FNL & 2089'FWL,SEC.07)		

DESIGN COMMENTS				
MD [ft]	Inclination [°]	Azimuth [°]	TVD [ft]	Comment
30.00	0.000	8.690	30.00	SHL
2100.00	0.000	8.690	2100.00	End of Tangent
2909.88	16.198	8.690	2899.13	Build (XS)
6337.40	16.198	8.690	6190.60	KOP
7517.89	90.169	181.757	7003.00	LP/TPZ
7718.24	90.169	181.757	7002.41	T1
7934.95	90.170	179.590	7001.77	3D Arc (J)
17613.39	90.170	179.590	6973.00	BHL



Closest Approach Clearance Summary Report

PIONEER Y18-756 (REV-1.0) PWP - SPE WPTS Stop Drilling HSE Risk (2017)

Page 1 of 4



REFERENCE WELLPATH IDENTIFICATION			
Operator	NOBLE ENERGY, INC	Well	Pioneer Y18-756
Field	WELD COUNTY (NOBLE NAD 83 GRID)	API/Legal	
Facility	SEC.07-T02N-R64W	Wellbore	Pioneer Y18-756 PWB
Slot	SLOT#23 PIONEER Y18-756 (639'FNL & 2089'FWL,SEC.07)		

REPORT SETUP INFORMATION			
Projection System	NAD83 / Lambert Colorado SP, Northern Zone (501), US feet	Software System	WellArchitect® 6.0
North Reference	Grid	User	Guenaler
Scale	0.999958	Report Generated	5/23/2022 at 10:03:57 AM
Convergence at slot	0.58° East	Database	WA_Denver

WELLPATH LOCATION						
	Local coordinates		Grid coordinates		Geographic coordinates	
	North[ft]	East[ft]	Easting[US ft]	Northing[US ft]	Latitude	Longitude
Slot Location	43.93	163.64	3252822.66	1301763.53	40°09'29.5056"N	104°35'43.5948"W
Facility Reference Pt			3252659.03	1301719.60	40°09'29.0880"N	104°35'45.7080"W
Field Reference Pt			3000000.00	4454105.15	48°46'34.3150"N	105°30'0.0000"W

WELLPATH DATUM			
Calculation method	Minimum Curvature	(4883'GL+30'KB@4913'RKB) (RKB) to Facility Vertical Datum	4913.00ft
Horizontal Reference Pt	Slot	(4883'GL+30'KB@4913'RKB) (RKB) to Mean Sea Level	4913.00ft
Vertical Reference Pt	(4883'GL+30'KB@4913'RKB) (RKB)	(4883'GL+30'KB@4913'RKB) (RKB) to Mud Line at Slot (SLOT#23 PIONEER Y18-756 (639'FNL & 2089'FWL,SEC.07))	4913.00ft
MD Reference Pt	(4883'GL+30'KB@4913'RKB) (RKB)		
Field Vertical Reference	Mean Sea Level		

POSITIONAL UNCERTAINTY CALCULATION SETTINGS					
Ellipse Confidence Limit	3.50 Std Dev	Ellipse Start MD	30.00ft	Surface Position Uncertainty	included
Declination	7.73° East of TN	Dip Angle	66.45°	Mag Field Strength	51798 nT
Slot Surface Uncertainty @1SD		Horizontal	0.100ft	Vertical	1.000ft
Facility Surface Uncertainty @1SD		Horizontal	8.200ft	Vertical	3.000ft
Positional Uncertainty values in the WELLPATH DATA table are the projection of the ellipsoid of uncertainty onto the vertical and horizontal planes					



Closest Approach Clearance Summary Report

PIONEER Y18-756 (REV-1.0) PWP - SPE WPTS Stop Drilling HSE Risk (2017)

Page 2 of 4



REFERENCE WELLPATH IDENTIFICATION			
Operator	NOBLE ENERGY, INC	Well	Pioneer Y18-756
Field	WELD COUNTY (NOBLE NAD 83 GRID)	API/Legal	
Facility	SEC.07-T02N-R64W	Wellbore	Pioneer Y18-756 PWB
Slot	SLOT#23 PIONEER Y18-756 (639'FNL & 2089'FWL,SEC.07)		

PROXIMITY-SCAN RULE			
Rule Name	SPE WPTS Stop Drilling HSE Risk (2017)	Rule Based On	Ratio
Plane of Rule	Closest Approach	Threshold Value	1.00
Include Casing & Hole Size	yes	Apply Cone of Safety	no

HOLE & CASING SECTIONS - Ref Wellbore: Pioneer Y18-756 PWB Ref Wellpath: PIONEER Y18-756 (REV-1.0) PWP									
String/Diameter	Start MD [ft]	End MD [ft]	Interval [ft]	Start TVD [ft]	End TVD [ft]	Start N/S [ft]	Start E/W [ft]	End N/S [ft]	End E/W [ft]
9.625in Casing Surface	30.00	1950.00	1920.00	30.00	1950.00	0.00	0.00	0.00	0.00

SURVEY PROGRAM - Ref Wellbore: Pioneer Y18-756 PWB Ref Wellpath: PIONEER Y18-756 (REV-1.0) PWP				
Start MD [ft]	End MD [ft]	Positional Uncertainty Model	Log Name/Comment	Wellbore
30.00	1950.00	Gyrodatta 2015 - GC+DROP+COND		Pioneer Y18-756 PWB
1950.00	17628.90	OWSG MWD rev2 (MS+IFR1)		Pioneer Y18-756 PWB



Closest Approach Clearance Summary Report

PIONEER Y18-756 (REV-1.0) PWP - SPE WPTS Stop Drilling HSE Risk (2017)

Page 3 of 4



REFERENCE WELLPATH IDENTIFICATION			
Operator	NOBLE ENERGY, INC	Well	Pioneer Y18-756
Field	WELD COUNTY (NOBLE NAD 83 GRID)	API/Legal	
Facility	SEC.07-T02N-R64W	Wellbore	Pioneer Y18-756 PWB
Slot	SLOT#23 PIONEER Y18-756 (639'FNL & 2089'FWL,SEC.07)		

CALCULATION RANGE & CUTOFF		
From: 30.00ft MD	To: 17613.39ft MD	C-C Cutoff: (none)

OFFSET WELL CLEARANCE SUMMARY (32 Offset Wellpaths selected) Ratios are calculated in Closest Approach plane												
Offset Facility	Offset Slot	Offset Well	Offset Wellbore	Offset Wellpath	Wellbore Status	C-C Clearance Distance			Rule Separation Ratio			
						Ref MD [ft]	Min C-C Clear Dist [ft]	Diverging from MD [ft]	Ref MD of Min Ratio [ft]	Min Ratio	Min Ratio Dvrg from [ft]	Rule Status
SEC.07-T02N-R64W	SLOT#24 PIONEER Y18-766 (661'FNL & 2088'FWL,SEC.07)	Pioneer Y18-766	Pioneer Y18-766 PWB	Pioneer Y18-766 (REV-1.0) PWP	Planned	30.00	22.59	7930.00	2101.42	1.03	17613.39	WARN
SEC.07-T02N-R64W	SLOT#25 PIONEER Y18-770 (684'FNL & 2088'FWL,SEC.07)	PIONEER Y18-770	PIONEER Y18-770 PWB	PIONEER Y18-770 (REV-1.0) PWP	Planned	30.00	45.17	7930.00	2103.14	2.29	17613.39	PASS
SEC.07-T02N-R64W	SLOT#22 PIONEER Y18-744 (658'FNL & 2240'FEL,SEC.07)	Pioneer Y18-744	Pioneer Y18-744 PWB	Pioneer Y18-744 (REV-1.0) PWP	Planned	7330.41	619.93	7330.41	17613.39	2.94	17613.39	PASS
SEC.07-T02N-R64W	SLOT#26 PIONEER Y18-775 (706'FNL & 2088'FWL,SEC.07)	Pioneer Y18-775	Pioneer Y18-775 PWB	PIONEER Y18-775 (REV-1.0) PWP	Planned	2250.01	66.19	7930.00	2275.79	3.44	17613.39	PASS
SEC.07-T02N-R64W	SLOT#15 Pioneer 22-7 (SI)	Pioneer 22-7 (SI)	Pioneer 22-7 (SI) AWB	Pioneer 22-7 (SI) AWP	Drilling	9494.48	213.11	9494.48	9497.81	4.03	9497.81	PASS
SEC.07-T02N-R64W	SLOT#27 PIONEER Y18-785 (729'FNL & 2088'FWL,SEC.07)	Pioneer Y18-785	Pioneer Y18-785 PWB	PIONEER Y18-785 (REV-1.0) PWP_AC	Planned	30.00	89.99	7830.00	2106.56	4.79	17613.39	PASS
SEC.07-T02N-R64W	SLOT#03 PIONEER D31-756 (681'FNL & 1991'FWL,SEC.07)	PIONEER D31-756	PIONEER D31-756 AWB	PIONEER D31-756 AWP	Drilling	2104.78	106.24	7430.00	7407.20	4.92	7407.20	PASS
SEC.07-T02N-R64W	SLOT#21 PIONEER Y18-735 (681'FNL & 2240'FEL,SEC.07)	Pioneer Y18-735	Pioneer Y18-735 PWB	Pioneer Y18-735 (REV-1.0) PWP	Planned	2242.52	762.58	7934.95	17613.39	5.90	17613.39	PASS
Y Section 18	(Charles R Milliken Unit 1 (PR))	Charles R Milliken Unit 1 (PR)	Wellbore #1	Wellbore #1\Gyro Surveys	Drilling	16341.14	1239.87	16341.14	16650.99	6.31	16650.99	PASS
Y Section 18	(HSR Harkis 15-18 (PR))	HSR Harkis 15-18 (PR)	Wellbore #1	Wellbore #1\As-Drilled	Drilling	16480.71	1368.73	16480.71	16218.49	6.67	16218.49	PASS
SEC.07-T02N-R64W	SLOT#10 HP Farms Y 7-15JI (PR)	HP Farms Y 7-15JI (PR)	HP Farms Y 7-15JI (PR) AWB	HP Farms Y 7-15JI (PR) AWP	Drilling	11888.03	562.82	11888.03	11918.66	7.30	11918.66	PASS
SEC.07-T02N-R64W	SLOT#20 PIONEER Y18-730 (703'FNL & 2239'FEL,SEC.07)	Pioneer Y18-730	Pioneer Y18-730 PWB	PIONEER Y18-730 (REV-1.0) PWP	Planned	2222.75	763.90	2222.75	17613.39	7.78	17613.39	PASS
SEC.07-T02N-R64W	SLOT#02 PIONEER D31-775 (680'FNL & 1946'FWL, SEC.07)	PIONEER D31-775	PIONEER D31-775 AWB	PIONEER D31-775 AWP	Drilling	1988.62	142.25	7718.24	2136.96	7.95	7630.00	PASS
Y Section 18	(Lyle V Cooksey Gas Unit 1 (PR))	Lyle V Cooksey Gas Unit 1 (PR)	Wellbore #1	Wellbore #1\Gyro Surveys	Drilling	14262.38	1789.32	14262.38	14869.30	8.50	14869.30	PASS
Y Section 18	(ADA Harkins Unit A1 (PA))	ADA Harkins Unit A1 (PA)	Wellbore #1	Wellbore #1\Gyro Surveys	Drilling	13870.53	1061.62	13870.53	13877.33	8.68	13877.33	PASS
SEC.07-T02N-R64W	SLOT#19 PIONEER Y18-725 (726'FNL & 2239'FEL,SEC.07)	PIONEER Y18-725	PIONEER Y18-725 PWB	PIONEER Y18-725 (REV-1.0) PWP	Planned	30.00	765.72	8030.00	17613.39	8.87	17613.39	PASS
SEC.07-T02N-R64W	SLOT#01 PIONEER D31-785 (680'FNL & 1923'FWL, SEC.07)	PIONEER D31-785	PIONEER D31-785 AWB	PIONEER D31-785 AWP	Drilling	30.00	169.47	7830.00	2122.41	9.62	7930.00	PASS
SEC.07-T02N-R64W	SLOT#05 PIONEER D31-744 (706'FNL & 2142'FEL, SEC.07)	PIONEER D31-744	PIONEER D31-744 AWB	PIONEER D31-744 AWP	Drilling	7280.15	565.13	7280.15	7286.84	11.43	7286.84	PASS
SEC.07-T02N-R64W	SLOT#12 HP Y07-10D (PA)	HP Y07-10D (PA)	HP Y07-10D (PA) AWB	HP Y07-10D (PA) AWP	Drilling	10478.11	733.38	10478.11	10540.11	11.54	10540.11	PASS
SEC.07-T02N-R64W	SLOT#18 PIONEER Y18-715 (748'FNL & 2239'FEL,SEC.07)	Pioneer Y18-715	Pioneer Y18-715 PWB	PIONEER Y18-715 (REV-1.0) PWP	Planned	2309.41	767.80	2309.41	17613.39	11.74	17613.39	PASS
SEC.07-T02N-R64W	SLOT#17 Pioneer Y07-07D (PA)	Pioneer Y07-07D (PA)	Pioneer Y07-07D (PA) AWB	Pioneer Y07-07D (PA) AWP	Drilling	9160.62	857.31	9160.62	9207.41	16.51	9207.41	PASS
SEC.07-T02N-R64W	SLOT#29 UPRR 53 PAN AM E 1 (PA)	UPRR 53 PAN AM E 1 (PA)	UPRR 53 PAN AM E 1 (PA) AWB	UPRR 53 PAN AM E 1 (PA) AWP	Drilling	11237.86	1193.40	11237.86	11385.82	16.95	11385.82	PASS
SEC.07-T02N-R64W	SLOT#28 UPRC 7-10Q (PR)	UPRC 7-10Q (PR)	UPRC 7-10Q (PR) AWB	UPRC 7-10Q (PR) AWP	Drilling	11147.52	1254.59	11147.52	11325.05	18.27	11325.05	PASS
SEC.07-T02N-R64W	SLOT#13 Perkins 31-7 (SI)	Perkins 31-7 (SI)	Perkins 31-7 (SI) AWB	Perkins 31-7 (SI) AWP	Drilling	7935.26	942.20	7935.26	8034.81	21.33	8034.81	PASS
SEC.07-T02N-R64W	SLOT#06 PIONEER D31-735 (706'FNL & 2219'FEL, SEC.07)	PIONEER D31-735	PIONEER D31-735 AWB	PIONEER D31-735 AWP	Drilling	2202.02	876.93	7530.00	7480.57	23.42	7480.57	PASS



Closest Approach Clearance Summary Report

PIONEER Y18-756 (REV-1.0) PWP - SPE WPTS Stop Drilling HSE Risk (2017)

Page 4 of 4



REFERENCE WELLPATH IDENTIFICATION			
Operator	NOBLE ENERGY, INC	Well	Pioneer Y18-756
Field	WELD COUNTY (NOBLE NAD 83 GRID)	API/Legal	
Facility	SEC.07-T02N-R64W	Wellbore	Pioneer Y18-756 PWB
Slot	SLOT#23 PIONEER Y18-756 (639'FNL & 2089'FWL,SEC.07)		

CALCULATION RANGE & CUTOFF		
From: 30.00ft MD	To: 17613.39ft MD	C-C Cutoff: (none)

OFFSET WELL CLEARANCE SUMMARY (32 Offset Wellpaths selected) Ratios are calculated in Closest Approach plane												
Offset Facility	Offset Slot	Offset Well	Offset Wellbore	Offset Wellpath	Wellbore Status	C-C Clearance Distance			Rule Separation Ratio			
						Ref MD [ft]	Min C-C Clear Dist [ft]	Diverging from MD [ft]	Ref MD of Min Ratio [ft]	Min Ratio	Min Ratio Dvrg from [ft]	Rule Status
SEC.07-T02N-R64W	SLOT#16 Pioneer USX Y07-08D (PR)	Pioneer USX Y07-08D (PR)	Pioneer USX Y07-08D (PR) AWB	Pioneer USX Y07-08D (PR) AWP	Drilling	9355.70	2154.12	9355.70	9576.83	24.12	9576.83	PASS
SEC.07-T02N-R64W	SLOT#08 Harkis 1-7 (PA)	Harkis 1-7 (PA)	Harkis 1-7 (PA) AWB	Harkis 1-7 (PA) AWP	Drilling	8751.63	1222.57	8751.63	8904.88	26.55	8904.88	PASS
SEC.07-T02N-R64W	SLOT#14 Perkins USX Y 7-17 (SI)	Perkins USX Y 7-17 (SI)	Perkins USX Y 7-17 (SI) AWB	Perkins USX Y 7-17 (SI) AWP	Drilling	8568.72	1575.40	8568.72	8873.22	34.67	8873.22	PASS
SEC.07-T02N-R64W	SLOT#07 PIONEER D31-725 (707'FNL & 2097'FEL, SEC.07)	PIONEER D31-725	PIONEER D31-725 AWB	PIONEER D31-725 AWP	Drilling	2205.53	896.84	7630.00	7561.63	35.01	7930.00	PASS
SEC.07-T02N-R64W	SLOT#11 HP Y07-09 (PR)	HP Y07-09 (PR)	HP Y07-09 (PR) AWB	HP Y07-09 (PR) AWP	Drilling	10566.03	2249.92	10566.03	11145.38	35.02	11145.38	PASS
SEC.07-T02N-R64W	SLOT#09 Harkis 11-7 (PA)	Harkis 11-7 (PA)	Harkis 11-7 (PA) AWB	Harkis 11-7 (PA) AWP	Drilling	2016.89	1445.27	7934.95	8172.81	37.73	8172.81	PASS
SEC.07-T02N-R64W	SLOT#04 PIONEER D31-716 (707'FNL & 2074'FEL, SEC.07)	PIONEER D31-716	PIONEER D31-716 AWB	PIONEER D31-716 AWP	Drilling	2005.04	924.68	7718.24	8305.49	45.37	8305.49	PASS