

NOBLE ENERGY, INC



Location:	COLORADO	Slot:	SLOT#24 PIONEER Y18-766 (661'FNL & 2088'FWL,SEC.07)
Field:	WELD COUNTY (NOBLE NAD 83 GRID)	Well:	Pioneer Y18-766
Facility:	SEC.07-T02N-R64W	Wellbore:	Pioneer Y18-766 PWB

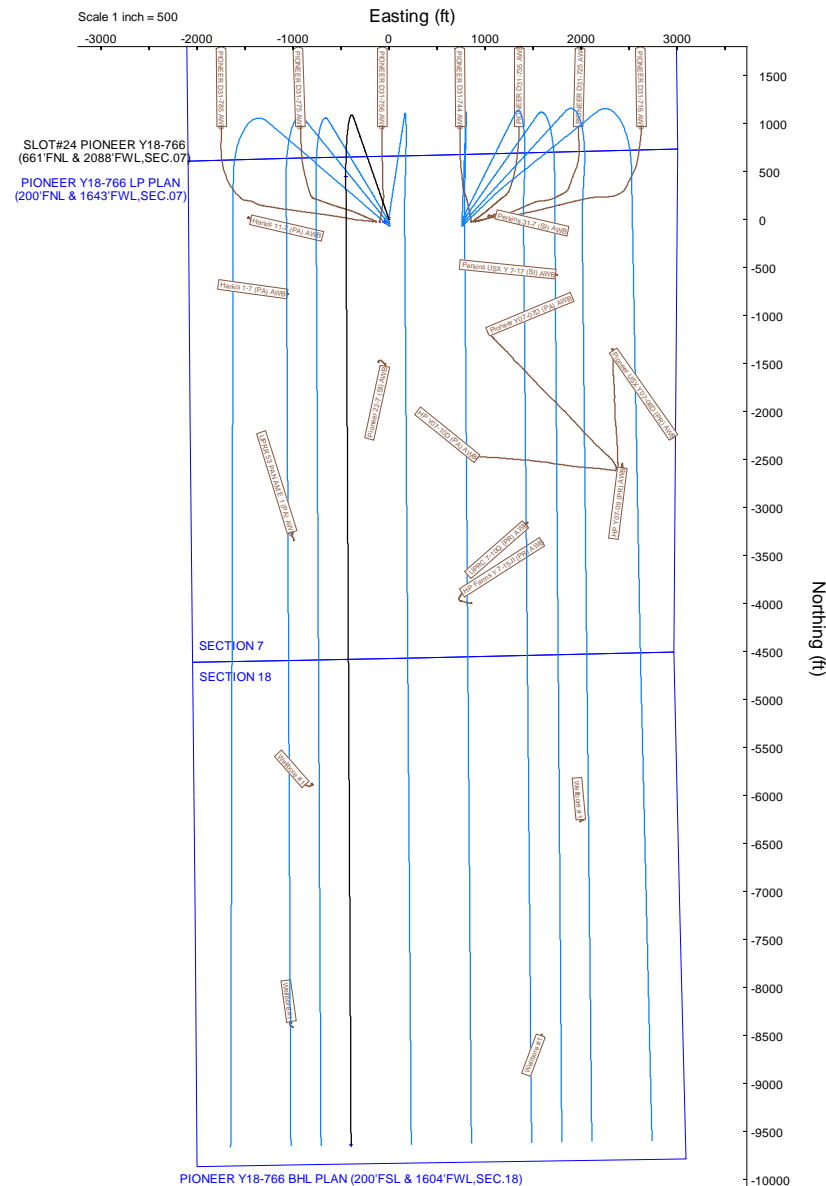
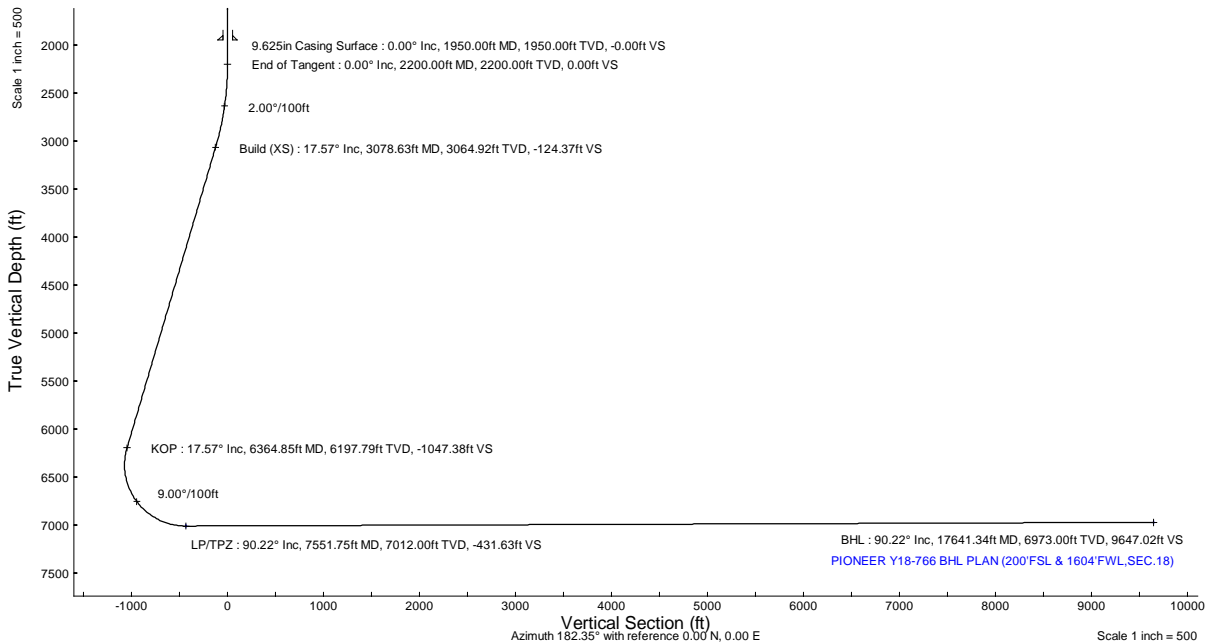
Plot reference wellpath is Pioneer Y18-766 (REV-1.0) PWP	Grid System: NAD83 / Lambert Colorado SP, Northern Zone (501), US feet
True vertical depths are referenced to (4884'GL+30'KB@4914'RKB) (RKB)	North Reference: Grid north
Reference wellpath measured depths are referenced to (4884'GL+30'KB@4914'RKB) (RKB)	Scale: True distance
(4884'GL+30'KB@4914'RKB) (RKB) to Mean Sea Level: 4914 feet	Coordinates are in feet referenced to Slot
Mean Sea Level to Mud line (At Slot: SLOT#24 PIONEER Y18-766 (661'FNL & 2088'FWL,SEC.07)): 0 feet	Depths are in feet
Offset wellpath MDs are referenced to each path's default MD datum	Created by: gualater on 2022-05-23; Database: WA_Denver

Location Information						
Facility Name			Grid East (US ft)	Grid North (US ft)	Latitude	Longitude
SEC.07-T02N-R64W			3252658.032	1301719.599	40°09'29.0880"N	104°35'45.7080"W
Slot			Local N (ft)	Local E (ft)	Grid East (US ft)	Grid North (US ft)
SLOT#24 PIONEER Y18-766 (661'FNL & 2088'FWL,SEC.07)			21.34	163.87	3252822.892	1301740.942
(4884'GL+30'KB@4914'RKB) (RKB) to Mud line (At Slot: SLOT#24 PIONEER Y18-766 (661'FNL & 2088'FWL,SEC.07))			4914ft			
Mean Sea Level to Mud line (At Slot: SLOT#24 PIONEER Y18-766 (661'FNL & 2088'FWL,SEC.07))			0ft			
(4884'GL+30'KB@4914'RKB) (RKB) to Mean Sea Level			4914ft			

Targets						
Name	MD (ft)	TVD (ft)	Local N (ft)	Local E (ft)	Grid East (US ft)	Grid North (US ft)
PIONEER Y18-765 SECTION 18	N/A	-1.00	-23.79	-46.44	3252776.45	1301717.15
PIONEER Y18-765 SECTION 7	N/A	-1.00	-23.79	-46.44	3252776.45	1301717.15
PIONEER Y18-766 BHL PLAN (200'FSL & 1604'FWL,SEC.18)	17641.34	6973.00	-9638.92	-395.23	3252427.68	1292102.45
PIONEER Y18-766 LP PLAN (200'FNL & 1643'FWL,SEC.07)	7551.75	7012.00	450.44	-450.03	3252372.88	1302191.37
SECTION LINES - SEC.06-T02N-R64W	N/A	7997.00	5888.85	-2140.83	3250682.16	1307629.53

Bottom Hole Location									
MD (ft)	Inc (°)	Az (°)	TVD (ft)	Local N (ft)	Local E (ft)	Grid East (US ft)	Grid North (US ft)	Latitude	Longitude
17641.34	90.221	179.689	6973.00	-9638.92	-395.23	3252427.68	1292102.45	40°07'54.0747"N	104°35'49.9487"W

Well Profile Data								
Design Comment	MD (ft)	Inc (°)	Az (°)	TVD (ft)	Local N (ft)	Local E (ft)	DLS (°/100ft)	VS (ft)
SHL	30.00	0.000	340.831	30.00	0.00	0.00	0.00	0.00
End of Tangent	2200.00	0.000	340.831	2200.00	0.00	0.00	0.00	0.00
Build (XS)	3078.63	17.573	340.831	3064.92	126.27	-43.90	2.00	-124.37
KOP	6364.85	17.573	340.831	6197.79	1063.42	-369.67	0.00	-1047.38
LP/TPZ	7551.75	90.221	179.689	7012.00	450.44	-450.03	9.00	-431.63
BHL	17641.34	90.221	179.689	6973.00	-9638.92	-395.23	0.00	9647.02





Planned Wellpath Report
Pioneer Y18-766 (REV-1.0) PWP
Page 1 of 7



REFERENCE WELLPATH IDENTIFICATION			
Operator	NOBLE ENERGY, INC	Well	Pioneer Y18-766
Field	WELD COUNTY (NOBLE NAD 83 GRID)	API/Legal	
Facility	SEC.07-T02N-R64W	Wellbore	Pioneer Y18-766 PWB
Slot	SLOT#24 PIONEER Y18-766 (661'FNL & 2088'FWL,SEC.07)		

REPORT SETUP INFORMATION			
Projection System	NAD83 / Lambert Colorado SP, Northern Zone (501), US feet	Software System	WellArchitect® 6.0
North Reference	Grid	User	Guenaler
Scale	0.999958	Report Generated	5/23/2022 at 10:07:17 AM
Convergence at slot	0.58° East	Database	WA_Denver

WELLPATH LOCATION						
	Local coordinates		Grid coordinates		Geographic coordinates	
	North[ft]	East[ft]	Easting[US ft]	Northing[US ft]	Latitude	Longitude
Slot Location	21.34	163.87	3252822.89	1301740.94	40°09'29.2824"N	104°35'43.5948"W
Facility Reference Pt			3252659.03	1301719.60	40°09'29.0880"N	104°35'45.7080"W
Field Reference Pt			3000000.00	4454105.15	48°46'34.3150"N	105°30'0.0000"W

WELLPATH DATUM			
Calculation method	Minimum curvature	(4884'GL+30'KB@4914'RKB) (RKB) to Facility Vertical Datum	4914.00ft
Horizontal Reference Pt	Slot	(4884'GL+30'KB@4914'RKB) (RKB) to Mean Sea Level	4914.00ft
Vertical Reference Pt	(4884'GL+30'KB@4914'RKB) (RKB)	(4884'GL+30'KB@4914'RKB) (RKB) to Mud Line at Slot (SLOT#24 PIONEER Y18-766 (661'FNL & 2088'FWL,SEC.07))	4914.00ft
MD Reference Pt	(4884'GL+30'KB@4914'RKB) (RKB)	Section Origin	N 0.00, E 0.00 ft
Field Vertical Reference	Mean Sea Level	Section Azimuth	182.35°



Planned Wellpath Report
Pioneer Y18-766 (REV-1.0) PWP
Page 2 of 7



REFERENCE WELLPATH IDENTIFICATION			
Operator	NOBLE ENERGY, INC	Well	Pioneer Y18-766
Field	WELD COUNTY (NOBLE NAD 83 GRID)	API/Legal	
Facility	SEC.07-T02N-R64W	Wellbore	Pioneer Y18-766 PWB
Slot	SLOT#24 PIONEER Y18-766 (661'FNL & 2088'FWL,SEC.07)		

WELLPATH DATA (183 stations) † = interpolated, ‡ = extrapolated station										
MD [ft]	Inclination [°]	Azimuth [°]	TVD [ft]	Vert Sect [ft]	North [ft]	East [ft]	Latitude	Longitude	DLS [°/100ft]	Comments
0.00†	0.000	340.831	0.00	0.00	0.00	0.00	40°09'29.2824"N	104°35'43.5948"W	0.00	
30.00	0.000	340.831	30.00	0.00	0.00	0.00	40°09'29.2824"N	104°35'43.5948"W	0.00	SHL
130.00†	0.000	340.831	130.00	0.00	0.00	0.00	40°09'29.2824"N	104°35'43.5948"W	0.00	
230.00†	0.000	340.831	230.00	0.00	0.00	0.00	40°09'29.2824"N	104°35'43.5948"W	0.00	
330.00†	0.000	340.831	330.00	0.00	0.00	0.00	40°09'29.2824"N	104°35'43.5948"W	0.00	
430.00†	0.000	340.831	430.00	0.00	0.00	0.00	40°09'29.2824"N	104°35'43.5948"W	0.00	
530.00†	0.000	340.831	530.00	0.00	0.00	0.00	40°09'29.2824"N	104°35'43.5948"W	0.00	
630.00†	0.000	340.831	630.00	0.00	0.00	0.00	40°09'29.2824"N	104°35'43.5948"W	0.00	
730.00†	0.000	340.831	730.00	0.00	0.00	0.00	40°09'29.2824"N	104°35'43.5948"W	0.00	
830.00†	0.000	340.831	830.00	0.00	0.00	0.00	40°09'29.2824"N	104°35'43.5948"W	0.00	
930.00†	0.000	340.831	930.00	0.00	0.00	0.00	40°09'29.2824"N	104°35'43.5948"W	0.00	
1030.00†	0.000	340.831	1030.00	0.00	0.00	0.00	40°09'29.2824"N	104°35'43.5948"W	0.00	
1130.00†	0.000	340.831	1130.00	0.00	0.00	0.00	40°09'29.2824"N	104°35'43.5948"W	0.00	
1230.00†	0.000	340.831	1230.00	0.00	0.00	0.00	40°09'29.2824"N	104°35'43.5948"W	0.00	
1330.00†	0.000	340.831	1330.00	0.00	0.00	0.00	40°09'29.2824"N	104°35'43.5948"W	0.00	
1430.00†	0.000	340.831	1430.00	0.00	0.00	0.00	40°09'29.2824"N	104°35'43.5948"W	0.00	
1530.00†	0.000	340.831	1530.00	0.00	0.00	0.00	40°09'29.2824"N	104°35'43.5948"W	0.00	
1630.00†	0.000	340.831	1630.00	0.00	0.00	0.00	40°09'29.2824"N	104°35'43.5948"W	0.00	
1730.00†	0.000	340.831	1730.00	0.00	0.00	0.00	40°09'29.2824"N	104°35'43.5948"W	0.00	
1830.00†	0.000	340.831	1830.00	0.00	0.00	0.00	40°09'29.2824"N	104°35'43.5948"W	0.00	
1930.00†	0.000	340.831	1930.00	0.00	0.00	0.00	40°09'29.2824"N	104°35'43.5948"W	0.00	
2030.00†	0.000	340.831	2030.00	0.00	0.00	0.00	40°09'29.2824"N	104°35'43.5948"W	0.00	
2130.00†	0.000	340.831	2130.00	0.00	0.00	0.00	40°09'29.2824"N	104°35'43.5948"W	0.00	
2200.00	0.000	340.831	2200.00	0.00	0.00	0.00	40°09'29.2824"N	104°35'43.5948"W	0.00	End of Tangent
2230.00†	0.600	340.831	2230.00	-0.15	0.15	-0.05	40°09'29.2839"N	104°35'43.5954"W	2.00	
2330.00†	2.600	340.831	2329.96	-2.74	2.79	-0.97	40°09'29.3100"N	104°35'43.6069"W	2.00	
2430.00†	4.600	340.831	2429.75	-8.58	8.72	-3.03	40°09'29.3688"N	104°35'43.6327"W	2.00	
2530.00†	6.600	340.831	2529.27	-17.66	17.93	-6.23	40°09'29.4602"N	104°35'43.6727"W	2.00	
2630.00†	8.600	340.831	2628.39	-29.97	30.42	-10.58	40°09'29.5841"N	104°35'43.7270"W	2.00	
2730.00†	10.600	340.831	2726.98	-45.48	46.18	-16.05	40°09'29.7403"N	104°35'43.7955"W	2.00	
2830.00†	12.600	340.831	2824.93	-64.19	65.17	-22.65	40°09'29.9286"N	104°35'43.8780"W	2.00	
2930.00†	14.600	340.831	2922.13	-86.06	87.38	-30.37	40°09'30.1489"N	104°35'43.9745"W	2.00	
3030.00†	16.600	340.831	3018.44	-111.08	112.78	-39.20	40°09'30.4008"N	104°35'44.0849"W	2.00	
3078.63	17.573	340.831	3064.92	-124.37	126.27	-43.90	40°09'30.5346"N	104°35'44.1435"W	2.00	Build (XS)
3130.00†	17.573	340.831	3113.89	-138.80	140.92	-48.99	40°09'30.6799"N	104°35'44.2072"W	0.00	
3230.00†	17.573	340.831	3209.23	-166.88	169.44	-58.90	40°09'30.9627"N	104°35'44.3311"W	0.00	
3330.00†	17.573	340.831	3304.56	-194.97	197.96	-68.82	40°09'31.2455"N	104°35'44.4550"W	0.00	
3430.00†	17.573	340.831	3399.89	-223.06	226.47	-78.73	40°09'31.5283"N	104°35'44.5790"W	0.00	
3530.00†	17.573	340.831	3495.23	-251.15	254.99	-88.64	40°09'31.8111"N	104°35'44.7029"W	0.00	
3630.00†	17.573	340.831	3590.56	-279.23	283.51	-98.56	40°09'32.0938"N	104°35'44.8268"W	0.00	
3730.00†	17.573	340.831	3685.89	-307.32	312.03	-108.47	40°09'32.3766"N	104°35'44.9508"W	0.00	
3830.00†	17.573	340.831	3781.23	-335.41	340.54	-118.38	40°09'32.6594"N	104°35'45.0747"W	0.00	
3930.00†	17.573	340.831	3876.56	-363.50	369.06	-128.30	40°09'32.9422"N	104°35'45.1986"W	0.00	
4030.00†	17.573	340.831	3971.89	-391.58	397.58	-138.21	40°09'33.2250"N	104°35'45.3225"W	0.00	
4130.00†	17.573	340.831	4067.23	-419.67	426.10	-148.12	40°09'33.5078"N	104°35'45.4465"W	0.00	



Planned Wellpath Report
Pioneer Y18-766 (REV-1.0) PWP
Page 3 of 7



REFERENCE WELLPATH IDENTIFICATION			
Operator	NOBLE ENERGY, INC	Well	Pioneer Y18-766
Field	WELD COUNTY (NOBLE NAD 83 GRID)	API/Legal	
Facility	SEC.07-T02N-R64W	Wellbore	Pioneer Y18-766 PWB
Slot	SLOT#24 PIONEER Y18-766 (661'FNL & 2088'FWL,SEC.07)		

WELLPATH DATA (183 stations) † = interpolated, ‡ = extrapolated station										
MD [ft]	Inclination [°]	Azimuth [°]	TVD [ft]	Vert Sect [ft]	North [ft]	East [ft]	Latitude	Longitude	DLS [°/100ft]	Comments
4230.00†	17.573	340.831	4162.56	-447.76	454.62	-158.04	40°09'33.7906"N	104°35'45.5704"W	0.00	
4330.00†	17.573	340.831	4257.89	-475.85	483.13	-167.95	40°09'34.0734"N	104°35'45.6943"W	0.00	
4430.00†	17.573	340.831	4353.23	-503.93	511.65	-177.86	40°09'34.3562"N	104°35'45.8183"W	0.00	
4530.00†	17.573	340.831	4448.56	-532.02	540.17	-187.78	40°09'34.6390"N	104°35'45.9422"W	0.00	
4630.00†	17.573	340.831	4543.90	-560.11	568.69	-197.69	40°09'34.9218"N	104°35'46.0661"W	0.00	
4730.00†	17.573	340.831	4639.23	-588.20	597.20	-207.60	40°09'35.2046"N	104°35'46.1901"W	0.00	
4830.00†	17.573	340.831	4734.56	-616.28	625.72	-217.52	40°09'35.4874"N	104°35'46.3140"W	0.00	
4930.00†	17.573	340.831	4829.90	-644.37	654.24	-227.43	40°09'35.7702"N	104°35'46.4379"W	0.00	
5030.00†	17.573	340.831	4925.23	-672.46	682.76	-237.34	40°09'36.0530"N	104°35'46.5619"W	0.00	
5130.00†	17.573	340.831	5020.56	-700.55	711.27	-247.26	40°09'36.3358"N	104°35'46.6858"W	0.00	
5230.00†	17.573	340.831	5115.90	-728.63	739.79	-257.17	40°09'36.6186"N	104°35'46.8097"W	0.00	
5330.00†	17.573	340.831	5211.23	-756.72	768.31	-267.08	40°09'36.9014"N	104°35'46.9337"W	0.00	
5430.00†	17.573	340.831	5306.56	-784.81	796.83	-277.00	40°09'37.1842"N	104°35'47.0576"W	0.00	
5530.00†	17.573	340.831	5401.90	-812.90	825.34	-286.91	40°09'37.4670"N	104°35'47.1815"W	0.00	
5630.00†	17.573	340.831	5497.23	-840.98	853.86	-296.82	40°09'37.7498"N	104°35'47.3055"W	0.00	
5730.00†	17.573	340.831	5592.56	-869.07	882.38	-306.74	40°09'38.0326"N	104°35'47.4294"W	0.00	
5830.00†	17.573	340.831	5687.90	-897.16	910.90	-316.65	40°09'38.3153"N	104°35'47.5533"W	0.00	
5930.00†	17.573	340.831	5783.23	-925.25	939.41	-326.56	40°09'38.5981"N	104°35'47.6773"W	0.00	
6030.00†	17.573	340.831	5878.56	-953.33	967.93	-336.48	40°09'38.8809"N	104°35'47.8012"W	0.00	
6130.00†	17.573	340.831	5973.90	-981.42	996.45	-346.39	40°09'39.1637"N	104°35'47.9251"W	0.00	
6230.00†	17.573	340.831	6069.23	-1009.51	1024.97	-356.30	40°09'39.4465"N	104°35'48.0491"W	0.00	
6330.00†	17.573	340.831	6164.56	-1037.60	1053.48	-366.22	40°09'39.7293"N	104°35'48.1730"W	0.00	
6364.85	17.573	340.831	6197.79	-1047.38	1063.42	-369.67	40°09'39.8279"N	104°35'48.2162"W	0.00	KOP
6430.00†	12.210	331.444	6260.74	-1062.46	1078.78	-376.20	40°09'39.9803"N	104°35'48.2983"W	9.00	
6530.00†	6.102	286.261	6359.53	-1072.83	1089.57	-386.38	40°09'40.0880"N	104°35'48.4279"W	9.00	
6630.00†	9.318	218.361	6458.79	-1067.55	1084.70	-396.53	40°09'40.0409"N	104°35'48.5593"W	9.00	
6730.00†	17.258	198.972	6556.08	-1046.74	1064.29	-406.39	40°09'39.8401"N	104°35'48.6890"W	9.00	
6830.00†	25.890	191.901	6649.00	-1010.93	1028.82	-415.74	40°09'39.4906"N	104°35'48.8140"W	9.00	
6930.00†	34.701	188.222	6735.26	-960.98	979.18	-424.33	40°09'39.0010"N	104°35'48.9312"W	9.00	
7030.00†	43.581	185.893	6812.75	-898.13	916.60	-431.95	40°09'38.3833"N	104°35'49.0376"W	9.00	
7130.00†	52.495	184.222	6879.55	-823.93	842.60	-438.43	40°09'37.6527"N	104°35'49.1307"W	9.00	
7230.00†	61.428	182.911	6934.01	-740.21	759.02	-443.59	40°09'36.8273"N	104°35'49.2081"W	9.00	
7330.00†	70.372	181.806	6974.81	-649.02	667.90	-447.31	40°09'35.9274"N	104°35'49.2680"W	9.00	
7430.00†	79.321	180.819	7000.92	-552.61	571.51	-449.50	40°09'34.9750"N	104°35'49.3088"W	9.00	
7530.00†	88.274	179.888	7011.71	-453.36	472.19	-450.11	40°09'33.9937"N	104°35'49.3297"W	9.00	
7551.75	90.221	179.689	7012.00†	-431.63	450.44	-450.03	40°09'33.7788"N	104°35'49.3315"W	9.00	LP/TPZ
7630.00†	90.221	179.689	7011.70	-353.47	372.20	-449.60	40°09'33.0056"N	104°35'49.3363"W	0.00	
7730.00†	90.221	179.689	7011.31	-253.58	272.20	-449.06	40°09'32.0174"N	104°35'49.3424"W	0.00	
7830.00†	90.221	179.689	7010.92	-153.68	172.20	-448.52	40°09'31.0292"N	104°35'49.3485"W	0.00	
7930.00†	90.221	179.689	7010.54	-53.79	72.21	-447.97	40°09'30.0410"N	104°35'49.3546"W	0.00	
8030.00†	90.221	179.689	7010.15	46.10	-27.79	-447.43	40°09'29.0528"N	104°35'49.3608"W	0.00	
8130.00†	90.221	179.689	7009.76	145.99	-127.79	-446.89	40°09'28.0647"N	104°35'49.3669"W	0.00	
8230.00†	90.221	179.689	7009.38	245.88	-227.79	-446.34	40°09'27.0765"N	104°35'49.3730"W	0.00	
8330.00†	90.221	179.689	7008.99	345.77	-327.78	-445.80	40°09'26.0883"N	104°35'49.3791"W	0.00	
8430.00†	90.221	179.689	7008.61	445.66	-427.78	-445.26	40°09'25.1001"N	104°35'49.3852"W	0.00	



Planned Wellpath Report
Pioneer Y18-766 (REV-1.0) PWP
Page 4 of 7



REFERENCE WELLPATH IDENTIFICATION			
Operator	NOBLE ENERGY, INC	Well	Pioneer Y18-766
Field	WELD COUNTY (NOBLE NAD 83 GRID)	API/Legal	
Facility	SEC.07-T02N-R64W	Wellbore	Pioneer Y18-766 PWB
Slot	SLOT#24 PIONEER Y18-766 (661'FNL & 2088'FWL,SEC.07)		

WELLPATH DATA (183 stations) † = interpolated, ‡ = extrapolated station										
MD [ft]	Inclination [°]	Azimuth [°]	TVD [ft]	Vert Sect [ft]	North [ft]	East [ft]	Latitude	Longitude	DLS [°/100ft]	Comments
8530.00†	90.221	179.689	7008.22	545.56	-527.78	-444.71	40°09'24.1119"N	104°35'49.3914"W	0.00	
8630.00†	90.221	179.689	7007.83	645.45	-627.78	-444.17	40°09'23.1237"N	104°35'49.3975"W	0.00	
8730.00†	90.221	179.689	7007.45	745.34	-727.78	-443.63	40°09'22.1355"N	104°35'49.4036"W	0.00	
8830.00†	90.221	179.689	7007.06	845.23	-827.77	-443.08	40°09'21.1473"N	104°35'49.4097"W	0.00	
8930.00†	90.221	179.689	7006.67	945.12	-927.77	-442.54	40°09'20.1592"N	104°35'49.4158"W	0.00	
9030.00†	90.221	179.689	7006.29	1045.01	-1027.77	-442.00	40°09'19.1710"N	104°35'49.4220"W	0.00	
9130.00†	90.221	179.689	7005.90	1144.91	-1127.77	-441.45	40°09'18.1828"N	104°35'49.4281"W	0.00	
9230.00†	90.221	179.689	7005.51	1244.80	-1227.76	-440.91	40°09'17.1946"N	104°35'49.4342"W	0.00	
9330.00†	90.221	179.689	7005.13	1344.69	-1327.76	-440.37	40°09'16.2064"N	104°35'49.4403"W	0.00	
9430.00†	90.221	179.689	7004.74	1444.58	-1427.76	-439.82	40°09'15.2182"N	104°35'49.4464"W	0.00	
9530.00†	90.221	179.689	7004.35	1544.47	-1527.76	-439.28	40°09'14.2300"N	104°35'49.4525"W	0.00	
9630.00†	90.221	179.689	7003.97	1644.36	-1627.76	-438.74	40°09'13.2418"N	104°35'49.4587"W	0.00	
9730.00†	90.221	179.689	7003.58	1744.26	-1727.75	-438.20	40°09'12.2537"N	104°35'49.4648"W	0.00	
9830.00†	90.221	179.689	7003.19	1844.15	-1827.75	-437.65	40°09'11.2655"N	104°35'49.4709"W	0.00	
9930.00†	90.221	179.689	7002.81	1944.04	-1927.75	-437.11	40°09'10.2773"N	104°35'49.4770"W	0.00	
10030.00†	90.221	179.689	7002.42	2043.93	-2027.75	-436.57	40°09'9.2891"N	104°35'49.4831"W	0.00	
10130.00†	90.221	179.689	7002.03	2143.82	-2127.74	-436.02	40°09'8.3009"N	104°35'49.4893"W	0.00	
10230.00†	90.221	179.689	7001.65	2243.71	-2227.74	-435.48	40°09'7.3127"N	104°35'49.4954"W	0.00	
10330.00†	90.221	179.689	7001.26	2343.60	-2327.74	-434.94	40°09'6.3245"N	104°35'49.5015"W	0.00	
10430.00†	90.221	179.689	7000.87	2443.50	-2427.74	-434.39	40°09'5.3364"N	104°35'49.5076"W	0.00	
10530.00†	90.221	179.689	7000.49	2543.39	-2527.74	-433.85	40°09'4.3482"N	104°35'49.5137"W	0.00	
10630.00†	90.221	179.689	7000.10	2643.28	-2627.73	-433.31	40°09'3.3600"N	104°35'49.5198"W	0.00	
10730.00†	90.221	179.689	6999.71	2743.17	-2727.73	-432.76	40°09'2.3718"N	104°35'49.5260"W	0.00	
10830.00†	90.221	179.689	6999.33	2843.06	-2827.73	-432.22	40°09'1.3836"N	104°35'49.5321"W	0.00	
10930.00†	90.221	179.689	6998.94	2942.95	-2927.73	-431.68	40°09'0.3954"N	104°35'49.5382"W	0.00	
11030.00†	90.221	179.689	6998.56	3042.85	-3027.72	-431.13	40°08'59.4072"N	104°35'49.5443"W	0.00	
11130.00†	90.221	179.689	6998.17	3142.74	-3127.72	-430.59	40°08'58.4190"N	104°35'49.5504"W	0.00	
11230.00†	90.221	179.689	6997.78	3242.63	-3227.72	-430.05	40°08'57.4308"N	104°35'49.5566"W	0.00	
11330.00†	90.221	179.689	6997.40	3342.52	-3327.72	-429.51	40°08'56.4427"N	104°35'49.5627"W	0.00	
11430.00†	90.221	179.689	6997.01	3442.41	-3427.72	-428.96	40°08'55.4545"N	104°35'49.5688"W	0.00	
11530.00†	90.221	179.689	6996.62	3542.30	-3527.71	-428.42	40°08'54.4663"N	104°35'49.5749"W	0.00	
11630.00†	90.221	179.689	6996.24	3642.20	-3627.71	-427.88	40°08'53.4781"N	104°35'49.5810"W	0.00	
11730.00†	90.221	179.689	6995.85	3742.09	-3727.71	-427.33	40°08'52.4899"N	104°35'49.5871"W	0.00	
11830.00†	90.221	179.689	6995.46	3841.98	-3827.71	-426.79	40°08'51.5017"N	104°35'49.5933"W	0.00	
11930.00†	90.221	179.689	6995.08	3941.87	-3927.70	-426.25	40°08'50.5135"N	104°35'49.5994"W	0.00	
12030.00†	90.221	179.689	6994.69	4041.76	-4027.70	-425.70	40°08'49.5253"N	104°35'49.6055"W	0.00	
12130.00†	90.221	179.689	6994.30	4141.65	-4127.70	-425.16	40°08'48.5372"N	104°35'49.6116"W	0.00	
12230.00†	90.221	179.689	6993.92	4241.54	-4227.70	-424.62	40°08'47.5490"N	104°35'49.6177"W	0.00	
12330.00†	90.221	179.689	6993.53	4341.44	-4327.70	-424.07	40°08'46.5608"N	104°35'49.6238"W	0.00	
12430.00†	90.221	179.689	6993.14	4441.33	-4427.69	-423.53	40°08'45.5726"N	104°35'49.6300"W	0.00	
12530.00†	90.221	179.689	6992.76	4541.22	-4527.69	-422.99	40°08'44.5844"N	104°35'49.6361"W	0.00	
12630.00†	90.221	179.689	6992.37	4641.11	-4627.69	-422.44	40°08'43.5962"N	104°35'49.6422"W	0.00	
12730.00†	90.221	179.689	6991.98	4741.00	-4727.69	-421.90	40°08'42.6080"N	104°35'49.6483"W	0.00	
12830.00†	90.221	179.689	6991.60	4840.89	-4827.68	-421.36	40°08'41.6198"N	104°35'49.6544"W	0.00	
12930.00†	90.221	179.689	6991.21	4940.79	-4927.68	-420.81	40°08'40.6316"N	104°35'49.6605"W	0.00	



Planned Wellpath Report
Pioneer Y18-766 (REV-1.0) PWP
Page 5 of 7



REFERENCE WELLPATH IDENTIFICATION			
Operator	NOBLE ENERGY, INC	Well	Pioneer Y18-766
Field	WELD COUNTY (NOBLE NAD 83 GRID)	API/Legal	
Facility	SEC.07-T02N-R64W	Wellbore	Pioneer Y18-766 PWB
Slot	SLOT#24 PIONEER Y18-766 (661'FNL & 2088'FWL,SEC.07)		

WELLPATH DATA (183 stations) † = interpolated, ‡ = extrapolated station										
MD [ft]	Inclination [°]	Azimuth [°]	TVD [ft]	Vert Sect [ft]	North [ft]	East [ft]	Latitude	Longitude	DLS [°/100ft]	Comments
13030.00†	90.221	179.689	6990.82	5040.68	-5027.68	-420.27	40°08'39.6435"N	104°35'49.6667"W	0.00	
13130.00†	90.221	179.689	6990.44	5140.57	-5127.68	-419.73	40°08'38.6553"N	104°35'49.6728"W	0.00	
13230.00†	90.221	179.689	6990.05	5240.46	-5227.68	-419.19	40°08'37.6671"N	104°35'49.6789"W	0.00	
13330.00†	90.221	179.689	6989.66	5340.35	-5327.67	-418.64	40°08'36.6789"N	104°35'49.6850"W	0.00	
13430.00†	90.221	179.689	6989.28	5440.24	-5427.67	-418.10	40°08'35.6907"N	104°35'49.6911"W	0.00	
13530.00†	90.221	179.689	6988.89	5540.14	-5527.67	-417.56	40°08'34.7025"N	104°35'49.6972"W	0.00	
13630.00†	90.221	179.689	6988.51	5640.03	-5627.67	-417.01	40°08'33.7143"N	104°35'49.7034"W	0.00	
13730.00†	90.221	179.689	6988.12	5739.92	-5727.66	-416.47	40°08'32.7261"N	104°35'49.7095"W	0.00	
13830.00†	90.221	179.689	6987.73	5839.81	-5827.66	-415.93	40°08'31.7380"N	104°35'49.7156"W	0.00	
13930.00†	90.221	179.689	6987.35	5939.70	-5927.66	-415.38	40°08'30.7498"N	104°35'49.7217"W	0.00	
14030.00†	90.221	179.689	6986.96	6039.59	-6027.66	-414.84	40°08'29.7616"N	104°35'49.7278"W	0.00	
14130.00†	90.221	179.689	6986.57	6139.48	-6127.66	-414.30	40°08'28.7734"N	104°35'49.7339"W	0.00	
14230.00†	90.221	179.689	6986.19	6239.38	-6227.65	-413.75	40°08'27.7852"N	104°35'49.7401"W	0.00	
14330.00†	90.221	179.689	6985.80	6339.27	-6327.65	-413.21	40°08'26.7970"N	104°35'49.7462"W	0.00	
14430.00†	90.221	179.689	6985.41	6439.16	-6427.65	-412.67	40°08'25.8088"N	104°35'49.7523"W	0.00	
14530.00†	90.221	179.689	6985.03	6539.05	-6527.65	-412.12	40°08'24.8206"N	104°35'49.7584"W	0.00	
14630.00†	90.221	179.689	6984.64	6638.94	-6627.64	-411.58	40°08'23.8324"N	104°35'49.7645"W	0.00	
14730.00†	90.221	179.689	6984.25	6738.83	-6727.64	-411.04	40°08'22.8442"N	104°35'49.7706"W	0.00	
14830.00†	90.221	179.689	6983.87	6838.73	-6827.64	-410.49	40°08'21.8561"N	104°35'49.7768"W	0.00	
14930.00†	90.221	179.689	6983.48	6938.62	-6927.64	-409.95	40°08'20.8679"N	104°35'49.7829"W	0.00	
15030.00†	90.221	179.689	6983.09	7038.51	-7027.64	-409.41	40°08'19.8797"N	104°35'49.7890"W	0.00	
15130.00†	90.221	179.689	6982.71	7138.40	-7127.63	-408.87	40°08'18.8915"N	104°35'49.7951"W	0.00	
15230.00†	90.221	179.689	6982.32	7238.29	-7227.63	-408.32	40°08'17.9033"N	104°35'49.8012"W	0.00	
15330.00†	90.221	179.689	6981.93	7338.18	-7327.63	-407.78	40°08'16.9151"N	104°35'49.8073"W	0.00	
15430.00†	90.221	179.689	6981.55	7438.07	-7427.63	-407.24	40°08'15.9269"N	104°35'49.8134"W	0.00	
15530.00†	90.221	179.689	6981.16	7537.97	-7527.62	-406.69	40°08'14.9387"N	104°35'49.8196"W	0.00	
15630.00†	90.221	179.689	6980.77	7637.86	-7627.62	-406.15	40°08'13.9505"N	104°35'49.8257"W	0.00	
15730.00†	90.221	179.689	6980.39	7737.75	-7727.62	-405.61	40°08'12.9624"N	104°35'49.8318"W	0.00	
15830.00†	90.221	179.689	6980.00	7837.64	-7827.62	-405.06	40°08'11.9742"N	104°35'49.8379"W	0.00	
15930.00†	90.221	179.689	6979.61	7937.53	-7927.62	-404.52	40°08'10.9860"N	104°35'49.8440"W	0.00	
16030.00†	90.221	179.689	6979.23	8037.42	-8027.61	-403.98	40°08'9.9978"N	104°35'49.8501"W	0.00	
16130.00†	90.221	179.689	6978.84	8137.32	-8127.61	-403.43	40°08'9.0096"N	104°35'49.8563"W	0.00	
16230.00†	90.221	179.689	6978.46	8237.21	-8227.61	-402.89	40°08'8.0214"N	104°35'49.8624"W	0.00	
16330.00†	90.221	179.689	6978.07	8337.10	-8327.61	-402.35	40°08'7.0332"N	104°35'49.8685"W	0.00	
16430.00†	90.221	179.689	6977.68	8436.99	-8427.60	-401.80	40°08'6.0450"N	104°35'49.8746"W	0.00	
16530.00†	90.221	179.689	6977.30	8536.88	-8527.60	-401.26	40°08'5.0568"N	104°35'49.8807"W	0.00	
16630.00†	90.221	179.689	6976.91	8636.77	-8627.60	-400.72	40°08'4.0686"N	104°35'49.8868"W	0.00	
16730.00†	90.221	179.689	6976.52	8736.67	-8727.60	-400.18	40°08'3.0805"N	104°35'49.8929"W	0.00	
16830.00†	90.221	179.689	6976.14	8836.56	-8827.60	-399.63	40°08'2.0923"N	104°35'49.8991"W	0.00	
16930.00†	90.221	179.689	6975.75	8936.45	-8927.59	-399.09	40°08'1.1041"N	104°35'49.9052"W	0.00	
17030.00†	90.221	179.689	6975.36	9036.34	-9027.59	-398.55	40°08'0.1159"N	104°35'49.9113"W	0.00	
17130.00†	90.221	179.689	6974.98	9136.23	-9127.59	-398.00	40°07'59.1277"N	104°35'49.9174"W	0.00	
17230.00†	90.221	179.689	6974.59	9236.12	-9227.59	-397.46	40°07'58.1395"N	104°35'49.9235"W	0.00	
17330.00†	90.221	179.689	6974.20	9336.01	-9327.58	-396.92	40°07'57.1513"N	104°35'49.9296"W	0.00	
17430.00†	90.221	179.689	6973.82	9435.91	-9427.58	-396.37	40°07'56.1631"N	104°35'49.9357"W	0.00	



Planned Wellpath Report

Pioneer Y18-766 (REV-1.0) PWP

Page 6 of 7



REFERENCE WELLPATH IDENTIFICATION			
Operator	NOBLE ENERGY, INC	Well	Pioneer Y18-766
Field	WELD COUNTY (NOBLE NAD 83 GRID)	API/Legal	
Facility	SEC.07-T02N-R64W	Wellbore	Pioneer Y18-766 PWB
Slot	SLOT#24 PIONEER Y18-766 (661'FNL & 2088'FWL,SEC.07)		

WELLPATH DATA (183 stations) † = interpolated, ‡ = extrapolated station										
MD [ft]	Inclination [°]	Azimuth [°]	TVD [ft]	Vert Sect [ft]	North [ft]	East [ft]	Latitude	Longitude	DLS [°/100ft]	Comments
17530.00†	90.221	179.689	6973.43	9535.80	-9527.58	-395.83	40°07'55.1749"N	104°35'49.9419"W	0.00	
17630.00†	90.221	179.689	6973.04	9635.69	-9627.58	-395.29	40°07'54.1867"N	104°35'49.9480"W	0.00	
17641.34	90.221	179.689	6973.00‡	9647.02	-9638.92	-395.23	40°07'54.0747"N	104°35'49.9487"W	0.00	BHL

HOLE & CASING SECTIONS - Ref Wellbore: Pioneer Y18-766 PWB Ref Wellpath: Pioneer Y18-766 (REV-1.0) PWP									
String/Diameter	Start MD [ft]	End MD [ft]	Interval [ft]	Start TVD [ft]	End TVD [ft]	Start N/S [ft]	Start E/W [ft]	End N/S [ft]	End E/W [ft]
9.625in Casing Surface	30.00	1950.00	1920.00	30.00	1950.00	0.00	0.00	0.00	0.00

TARGETS									
Name	MD [ft]	TVD [ft]	North [ft]	East [ft]	Grid East [US ft]	Grid North [US ft]	Latitude	Longitude	Shape
PIONEER Y18-785 SECTION 18	N/A	-1.00	-23.79	-46.44	3252776.45	1301717.15	40°09'29.0520"N	104°35'44.1960"W	polygon
	2D Polygon: dimensions not calculated								
PIONEER Y18-785 SECTION 7	N/A	-1.00	-23.79	-46.44	3252776.45	1301717.15	40°09'29.0520"N	104°35'44.1960"W	polygon
	2D Polygon: dimensions not calculated								
2) PIONEER Y18-766 BHL PLAN (200'FSL & 1604'FWL,SEC.18)	17641.34	6973.00	-9638.92	-395.23	3252427.68	1292102.45	40°07'54.0747"N	104°35'49.9487"W	point
1) PIONEER Y18-766 LP PLAN (200'FNL & 1643'FWL,SEC.07)	7551.75	7012.00	450.44	-450.03	3252372.88	1302191.37	40°09'33.7788"N	104°35'49.3315"W	point
SECTION LINES - SEC.06-T02N-R64W	N/A	7997.00	5888.85	-2140.83	3250682.16	1307629.53	40°10'27.6881"N	104°36'10.3986"W	polygon
2D Polygon: dimensions not calculated									

SURVEY PROGRAM - Ref Wellbore: Pioneer Y18-766 PWB Ref Wellpath: Pioneer Y18-766 (REV-1.0) PWP				
Start MD [ft]	End MD [ft]	Positional Uncertainty Model	Log Name/Comment	Wellbore
30.00	1950.00	Gyrodata 2015 - GC+DROP+COND		Pioneer Y18-766 PWB
1950.00	17650.38	OWSG MWD rev2 (MS+IFR1)		Pioneer Y18-766 PWB



Planned Wellpath Report
Pioneer Y18-766 (REV-1.0) PWP
Page 7 of 7



REFERENCE WELLPATH IDENTIFICATION			
Operator	NOBLE ENERGY, INC	Well	Pioneer Y18-766
Field	WELD COUNTY (NOBLE NAD 83 GRID)	API/Legal	
Facility	SEC.07-T02N-R64W	Wellbore	Pioneer Y18-766 PWB
Slot	SLOT#24 PIONEER Y18-766 (661'FNL & 2088'FWL,SEC.07)		

DESIGN COMMENTS				
MD [ft]	Inclination [°]	Azimuth [°]	TVD [ft]	Comment
30.00	0.000	340.831	30.00	SHL
2200.00	0.000	340.831	2200.00	End of Tangent
3078.63	17.573	340.831	3064.92	Build (XS)
6364.85	17.573	340.831	6197.79	KOP
7551.75	90.221	179.689	7012.00	LP/TPZ
17641.34	90.221	179.689	6973.00	BHL



Closest Approach Clearance Summary Report

Pioneer Y18-766 (REV-1.0) PWP - SPE WPTS Stop Drilling HSE Risk (2017)

Page 1 of 4



REFERENCE WELLPATH IDENTIFICATION			
Operator	NOBLE ENERGY, INC	Well	Pioneer Y18-766
Field	WELD COUNTY (NOBLE NAD 83 GRID)	API/Legal	
Facility	SEC.07-T02N-R64W	Wellbore	Pioneer Y18-766 PWB
Slot	SLOT#24 PIONEER Y18-766 (661'FNL & 2088'FWL,SEC.07)		

REPORT SETUP INFORMATION			
Projection System	NAD83 / Lambert Colorado SP, Northern Zone (501), US feet	Software System	WellArchitect® 6.0
North Reference	Grid	User	Guenaler
Scale	0.999958	Report Generated	5/23/2022 at 10:07:37 AM
Convergence at slot	0.58° East	Database	WA_Denver

WELLPATH LOCATION						
	Local coordinates		Grid coordinates		Geographic coordinates	
	North[ft]	East[ft]	Easting[US ft]	Northing[US ft]	Latitude	Longitude
Slot Location	21.34	163.87	3252822.89	1301740.94	40°09'29.2824"N	104°35'43.5948"W
Facility Reference Pt			3252659.03	1301719.60	40°09'29.0880"N	104°35'45.7080"W
Field Reference Pt			3000000.00	4454105.15	48°46'34.3150"N	105°30'0.0000"W

WELLPATH DATUM			
Calculation method	Minimum Curvature	(4884'GL+30'KB@4914'RKB) (RKB) to Facility Vertical Datum	4914.00ft
Horizontal Reference Pt	Slot	(4884'GL+30'KB@4914'RKB) (RKB) to Mean Sea Level	4914.00ft
Vertical Reference Pt	(4884'GL+30'KB@4914'RKB) (RKB)	(4884'GL+30'KB@4914'RKB) (RKB) to Mud Line at Slot (SLOT#24 PIONEER Y18-766 (661'FNL & 2088'FWL,SEC.07))	4914.00ft
MD Reference Pt	(4884'GL+30'KB@4914'RKB) (RKB)		
Field Vertical Reference	Mean Sea Level		

POSITIONAL UNCERTAINTY CALCULATION SETTINGS					
Ellipse Confidence Limit	3.50 Std Dev	Ellipse Start MD	30.00ft	Surface Position Uncertainty	included
Declination	7.73° East of TN	Dip Angle	66.45°	Mag Field Strength	51798 nT
Slot Surface Uncertainty @1SD		Horizontal	0.100ft	Vertical	1.000ft
Facility Surface Uncertainty @1SD		Horizontal	8.200ft	Vertical	3.000ft
Positional Uncertainty values in the WELLPATH DATA table are the projection of the ellipsoid of uncertainty onto the vertical and horizontal planes					



Closest Approach Clearance Summary Report

Pioneer Y18-766 (REV-1.0) PWP - SPE WPTS Stop Drilling HSE Risk (2017)

Page 2 of 4



REFERENCE WELLPATH IDENTIFICATION			
Operator	NOBLE ENERGY, INC	Well	Pioneer Y18-766
Field	WELD COUNTY (NOBLE NAD 83 GRID)	API/Legal	
Facility	SEC.07-T02N-R64W	Wellbore	Pioneer Y18-766 PWB
Slot	SLOT#24 PIONEER Y18-766 (661'FNL & 2088'FWL,SEC.07)		

PROXIMITY-SCAN RULE			
Rule Name	SPE WPTS Stop Drilling HSE Risk (2017)	Rule Based On	Ratio
Plane of Rule	Closest Approach	Threshold Value	1.00
Include Casing & Hole Size	yes	Apply Cone of Safety	no

HOLE & CASING SECTIONS - Ref Wellbore: Pioneer Y18-766 PWB Ref Wellpath: Pioneer Y18-766 (REV-1.0) PWP									
String/Diameter	Start MD [ft]	End MD [ft]	Interval [ft]	Start TVD [ft]	End TVD [ft]	Start N/S [ft]	Start E/W [ft]	End N/S [ft]	End E/W [ft]
9.625in Casing Surface	30.00	1950.00	1920.00	30.00	1950.00	0.00	0.00	0.00	0.00

SURVEY PROGRAM - Ref Wellbore: Pioneer Y18-766 PWB Ref Wellpath: Pioneer Y18-766 (REV-1.0) PWP				
Start MD [ft]	End MD [ft]	Positional Uncertainty Model	Log Name/Comment	Wellbore
30.00	1950.00	Gyrodata 2015 - GC+DROP+COND		Pioneer Y18-766 PWB
1950.00	17650.38	OWSG MWD rev2 (MS+IFR1)		Pioneer Y18-766 PWB



Closest Approach Clearance Summary Report

Pioneer Y18-766 (REV-1.0) PWP - SPE WPTS Stop Drilling HSE Risk (2017)

Page 3 of 4



REFERENCE WELLPATH IDENTIFICATION			
Operator	NOBLE ENERGY, INC	Well	Pioneer Y18-766
Field	WELD COUNTY (NOBLE NAD 83 GRID)	API/Legal	
Facility	SEC.07-T02N-R64W	Wellbore	Pioneer Y18-766 PWB
Slot	SLOT#24 PIONEER Y18-766 (661'FNL & 2088'FWL,SEC.07)		

CALCULATION RANGE & CUTOFF		
From: 30.00ft MD	To: 17641.34ft MD	C-C Cutoff: (none)

OFFSET WELL CLEARANCE SUMMARY (32 Offset Wellpaths selected) Ratios are calculated in Closest Approach plane												
Offset Facility	Offset Slot	Offset Well	Offset Wellbore	Offset Wellpath	Wellbore Status	C-C Clearance Distance			Rule Separation Ratio			
						Ref MD [ft]	Min C-C Clear Dist [ft]	Diverging from MD [ft]	Ref MD of Min Ratio [ft]	Min Ratio	Min Ratio Dvrg from [ft]	Rule Status
SEC.07-T02N-R64W	SLOT#25 PIONEER Y18-770 (684'FNL & 2088'FWL,SEC.07)	PIONEER Y18-770	PIONEER Y18-770 PWB	PIONEER Y18-770 (REV-1.0) PWP	Planned	30.00	22.59	2200.00	2243.78	1.03	17641.34	WARN
SEC.07-T02N-R64W	SLOT#23 PIONEER Y18-756 (639'FNL & 2089'FWL,SEC.07)	Pioneer Y18-756	Pioneer Y18-756 PWB	PIONEER Y18-756 (REV-1.0) PWP	Planned	30.00	22.59	7930.00	2102.42	1.03	17641.34	WARN
SEC.07-T02N-R64W	SLOT#26 PIONEER Y18-775 (706'FNL & 2088'FWL,SEC.07)	Pioneer Y18-775	Pioneer Y18-775 PWB	PIONEER Y18-775 (REV-1.0) PWP	Planned	2457.05	36.37	2457.05	2472.38	1.76	17641.34	PASS
Y Section 18	(Charles R Milliken Unit 1 (PR))	Charles R Milliken Unit 1 (PR)	Wellbore #1	Wellbore #1\Gyro Surveys	Drilling	16364.98	615.04	16364.98	16513.92	3.13	16513.92	PASS
SEC.07-T02N-R64W	SLOT#27 PIONEER Y18-785 (729'FNL & 2088'FWL,SEC.07)	Pioneer Y18-785	Pioneer Y18-785 PWB	PIONEER Y18-785 (REV-1.0) PWP_AC	Planned	30.00	67.40	2200.00	2209.72	3.52	17641.34	PASS
Y Section 18	(ADA Harkins Unit A1 (PA))	ADA Harkins Unit A1 (PA)	Wellbore #1	Wellbore #1\Gyro Surveys	Drilling	13893.69	441.34	13893.69	13890.25	3.57	13890.25	PASS
SEC.07-T02N-R64W	SLOT#03 PIONEER D31-756 (681'FNL & 1991'FWL,SEC.07)	PIONEER D31-756	PIONEER D31-756 AWB	PIONEER D31-756 AWP	Drilling	2414.00	97.95	7330.00	2545.76	5.30	7330.00	PASS
SEC.07-T02N-R64W	SLOT#22 PIONEER Y18-744 (658'FNL & 2240'FEL,SEC.07)	Pioneer Y18-744	Pioneer Y18-744 PWB	Pioneer Y18-744 (REV-1.0) PWP	Planned	30.00	762.65	7930.00	17641.34	5.89	17641.34	PASS
SEC.07-T02N-R64W	SLOT#15 Pioneer 22-7 (SI)	Pioneer 22-7 (SI)	Pioneer 22-7 (SI) AWB	Pioneer 22-7 (SI) AWP	Drilling	9516.57	399.88	9516.57	9523.05	7.59	9523.05	PASS
SEC.07-T02N-R64W	SLOT#02 PIONEER D31-775 (680'FNL & 1946'FWL, SEC.07)	PIONEER D31-775	PIONEER D31-775 AWB	PIONEER D31-775 AWP	Drilling	1988.45	136.70	7551.75	2211.33	7.61	7530.00	PASS
SEC.07-T02N-R64W	SLOT#29 UPRR 53 PAN AM E 1 (PA)	UPRR 53 PAN AM E 1 (PA)	UPRR 53 PAN AM E 1 (PA) AWB	UPRR 53 PAN AM E 1 (PA) AWP	Drilling	11261.45	577.39	11261.45	11316.52	8.18	11316.52	PASS
SEC.07-T02N-R64W	SLOT#21 PIONEER Y18-735 (681'FNL & 2240'FEL,SEC.07)	Pioneer Y18-735	Pioneer Y18-735 PWB	Pioneer Y18-735 (REV-1.0) PWP	Planned	30.00	762.29	7930.00	17641.34	8.86	17641.34	PASS
SEC.07-T02N-R64W	SLOT#01 PIONEER D31-785 (680'FNL & 1923'FWL, SEC.07)	PIONEER D31-785	PIONEER D31-785 AWB	PIONEER D31-785 AWP	Drilling	30.00	165.28	7730.00	2194.10	9.37	7830.00	PASS
Y Section 18	(HSR Harkis 15-18 (PR))	HSR Harkis 15-18 (PR)	Wellbore #1	Wellbore #1\As-Drilled	Drilling	16499.77	1993.76	16499.77	16128.47	9.71	16128.47	PASS
SEC.07-T02N-R64W	SLOT#20 PIONEER Y18-730 (703'FNL & 2239'FEL,SEC.07)	Pioneer Y18-730	Pioneer Y18-730 PWB	PIONEER Y18-730 (REV-1.0) PWP	Planned	30.00	762.86	2200.00	17641.34	10.55	17641.34	PASS
Y Section 18	(Lyle V Cooksey Gas Unit 1 (PR))	Lyle V Cooksey Gas Unit 1 (PR)	Wellbore #1	Wellbore #1\Gyro Surveys	Drilling	14281.02	2410.55	14281.02	15117.41	11.41	15117.41	PASS
SEC.07-T02N-R64W	SLOT#19 PIONEER Y18-725 (726'FNL & 2239'FEL,SEC.07)	PIONEER Y18-725	PIONEER Y18-725 PWB	PIONEER Y18-725 (REV-1.0) PWP	Planned	30.00	763.82	8030.00	17641.34	11.82	17641.34	PASS
SEC.07-T02N-R64W	SLOT#08 Harkis 1-7 (PA)	Harkis 1-7 (PA)	Harkis 1-7 (PA) AWB	Harkis 1-7 (PA) AWP	Drilling	8775.31	610.88	8775.31	8832.50	13.16	8832.50	PASS
SEC.07-T02N-R64W	SLOT#18 PIONEER Y18-715 (748'FNL & 2239'FEL,SEC.07)	Pioneer Y18-715	Pioneer Y18-715 PWB	PIONEER Y18-715 (REV-1.0) PWP	Planned	30.00	765.44	2200.00	17641.34	14.68	17641.34	PASS
SEC.07-T02N-R64W	SLOT#10 HP Farms Y 7-15JI (PR)	HP Farms Y 7-15JI (PR)	HP Farms Y 7-15JI (PR) AWB	HP Farms Y 7-15JI (PR) AWP	Drilling	11908.61	1179.98	11908.61	12001.49	15.30	12001.49	PASS
SEC.07-T02N-R64W	SLOT#12 HP Y07-10D (PA)	HP Y07-10D (PA)	HP Y07-10D (PA) AWB	HP Y07-10D (PA) AWP	Drilling	10498.44	1348.11	10498.44	10650.57	21.13	10650.57	PASS
SEC.07-T02N-R64W	SLOT#09 Harkis 11-7 (PA)	Harkis 11-7 (PA)	Harkis 11-7 (PA) AWB	Harkis 11-7 (PA) AWP	Drilling	7997.96	1001.30	7997.96	8087.14	23.21	8087.14	PASS
SEC.07-T02N-R64W	SLOT#05 PIONEER D31-744 (706'FNL & 2142'FEL, SEC.07)	PIONEER D31-744	PIONEER D31-744 AWB	PIONEER D31-744 AWP	Drilling	1737.48	854.52	7230.00	7182.12	23.71	7182.12	PASS
SEC.07-T02N-R64W	SLOT#28 UPRC 7-10Q (PR)	UPRC 7-10Q (PR)	UPRC 7-10Q (PR) AWB	UPRC 7-10Q (PR) AWP	Drilling	11166.97	1870.34	11166.97	11482.52	26.97	11482.52	PASS
SEC.07-T02N-R64W	SLOT#17 Pioneer Y07-07D (PA)	Pioneer Y07-07D (PA)	Pioneer Y07-07D (PA) AWB	Pioneer Y07-07D (PA) AWP	Drilling	9180.69	1469.68	9180.69	9305.73	28.09	9305.73	PASS



Closest Approach Clearance Summary Report

Pioneer Y18-766 (REV-1.0) PWP - SPE WPTS Stop Drilling HSE Risk (2017)

Page 4 of 4



REFERENCE WELLPATH IDENTIFICATION			
Operator	NOBLE ENERGY, INC	Well	Pioneer Y18-766
Field	WELD COUNTY (NOBLE NAD 83 GRID)	API/Legal	
Facility	SEC.07-T02N-R64W	Wellbore	Pioneer Y18-766 PWB
Slot	SLOT#24 PIONEER Y18-766 (661'FNL & 2088'FWL,SEC.07)		

CALCULATION RANGE & CUTOFF		
From: 30.00ft MD	To: 17641.34ft MD	C-C Cutoff: (none)

OFFSET WELL CLEARANCE SUMMARY (32 Offset Wellpaths selected) Ratios are calculated in Closest Approach plane												
Offset Facility	Offset Slot	Offset Well	Offset Wellbore	Offset Wellpath	Wellbore Status	C-C Clearance Distance			Rule Separation Ratio			
						Ref MD [ft]	Min C-C Clear Dist [ft]	Diverging from MD [ft]	Ref MD of Min Ratio [ft]	Min Ratio	Min Ratio Dvrg from [ft]	Rule Status
SEC.07-T02N-R64W	SLOT#16 Pioneer USX Y07-08D (PR)	Pioneer USX Y07-08D (PR)	Pioneer USX Y07-08D (PR) AWB	Pioneer USX Y07-08D (PR) AWP	Drilling	9373.59	2766.92	9373.59	9694.68	30.91	9694.68	PASS
SEC.07-T02N-R64W	SLOT#13 Perkins 31-7 (SI)	Perkins 31-7 (SI)	Perkins 31-7 (SI) AWB	Perkins 31-7 (SI) AWP	Drilling	30.00	1035.25	7930.00	8146.62	34.88	8146.62	PASS
SEC.07-T02N-R64W	SLOT#06 PIONEER D31-735 (706'FNL & 2219'FEL, SEC.07)	PIONEER D31-735	PIONEER D31-735 AWB	PIONEER D31-735 AWP	Drilling	2085.17	876.04	7730.00	6970.96	35.85	7430.00	PASS
SEC.07-T02N-R64W	SLOT#11 HP Y07-09 (PR)	HP Y07-09 (PR)	HP Y07-09 (PR) AWB	HP Y07-09 (PR) AWP	Drilling	10583.76	2864.80	10583.76	11402.61	43.97	11402.61	PASS
SEC.07-T02N-R64W	SLOT#14 Perkins USX Y 7-17 (SI)	Perkins USX Y 7-17 (SI)	Perkins USX Y 7-17 (SI) AWB	Perkins USX Y 7-17 (SI) AWP	Drilling	2246.18	1779.01	8630.00	9080.92	47.41	9080.92	PASS
SEC.07-T02N-R64W	SLOT#07 PIONEER D31-725 (707'FNL & 2097'FEL, SEC.07)	PIONEER D31-725	PIONEER D31-725 AWB	PIONEER D31-725 AWP	Drilling	2184.73	896.07	7730.00	7867.53	48.72	7867.53	PASS
SEC.07-T02N-R64W	SLOT#04 PIONEER D31-716 (707'FNL & 2074'FEL, SEC.07)	PIONEER D31-716	PIONEER D31-716 AWB	PIONEER D31-716 AWP	Drilling	2007.25	923.77	7830.00	2303.93	51.79	8530.00	PASS