

Interim Reclamation and Stormwater Inspection

June 6, 2022

Operator: EDGE ENERGY II LLC- #10671

Location ID: 456286

Inspection Document #: 697503980

Weld County, CO

NENE Section 29 T11N R66W

Chris Binschus
Reclamation Specialist, COGCC



COLORADO
**Oil & Gas Conservation
Commission**

Department of Natural Resources

Inspection Photos
Location Name: Deporter /29-A Pad
Location ID: 456286



Photo 1. Photo taken from the entrance of location, facing East. Photo illustrates Operator has replaced the cattle guard and installed new gates.



Inspection Photos
Location Name: Deporter /29-A Pad
Location ID: 456286



Photo 2. Photo taken from a portion of the southern access road, facing North. Photo illustrates the cut slope has been stabilized with erosion control matting and desirable species establishment was observed.



Inspection Photos
Location Name: Deporter /29-A Pad
Location ID: 456286



Photo 3. Photo taken from the southwestern well location, facing North. Photo illustrates Operator has installed fencing around the well location to exclude cattle.



Photo 4. Photo taken from the northwestern location, facing West. See comments under Photo 3.

Note: the majority of the green vegetation is that of Common rye.

Inspection Photos
Location Name: Deporter /29-A Pad
Location ID: 456286



Photo 5. Photo taken from the southwestern interim reclamation area along the fill slope. Photo illustrates Common rye starting to flower.



Inspection Photos
Location Name: Deporter /29-A Pad
Location ID: 456286



Photo 6. Photo taken from the southwestern interim reclamation area, facing East. Photo illustrates Operator has performed additional interim reclamation and desirable vegetation establishment was observed.

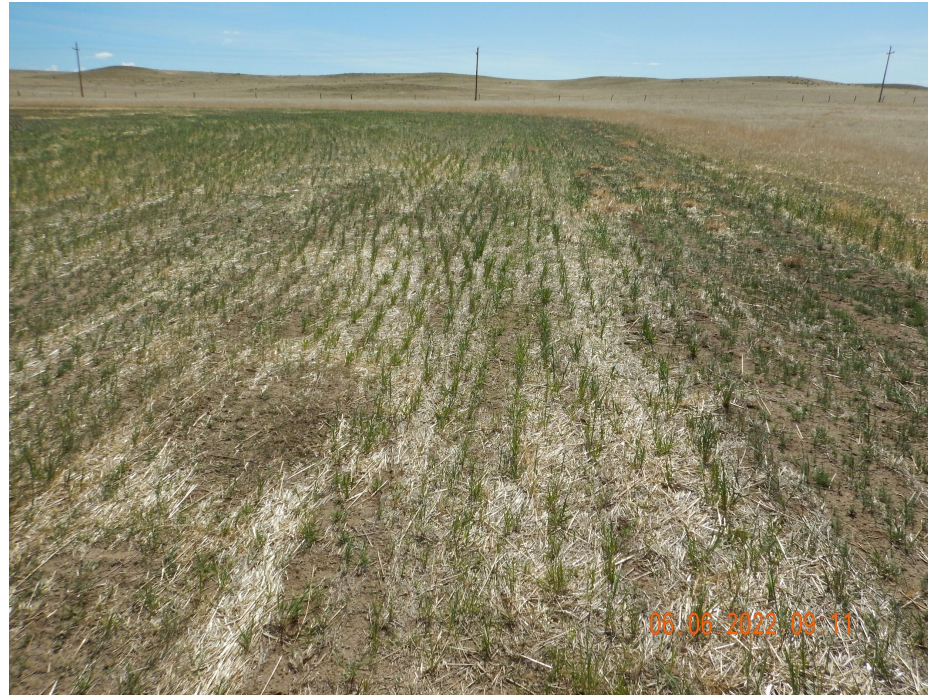


Photo 7. Photo taken from the southern interim reclamation area, facing East. See comments under Photo 6.

Inspection Photos
Location Name: Deporter /29-A Pad
Location ID: 456286



Photo 8. Photo taken from the eastern interim reclamation area, facing South. Common rye was observed along the perimeter of location.



Photo 9. Photo taken from the eastern interim reclamation area, facing West. See comments under Photo 6.