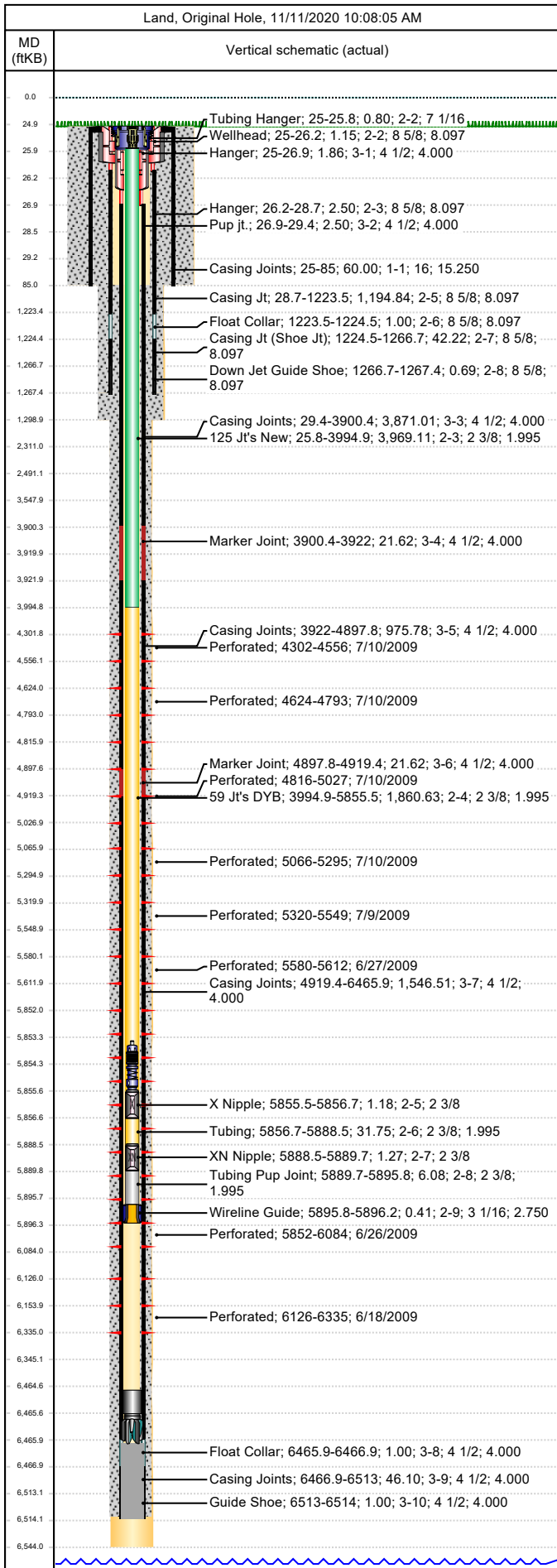




# Wellbore Schematic

Well Name SKR-598-25-AV-18	Lease Chevron USA	Field Name Skinner Ridge	Business Unit Mid-Continent
-------------------------------	----------------------	-----------------------------	--------------------------------

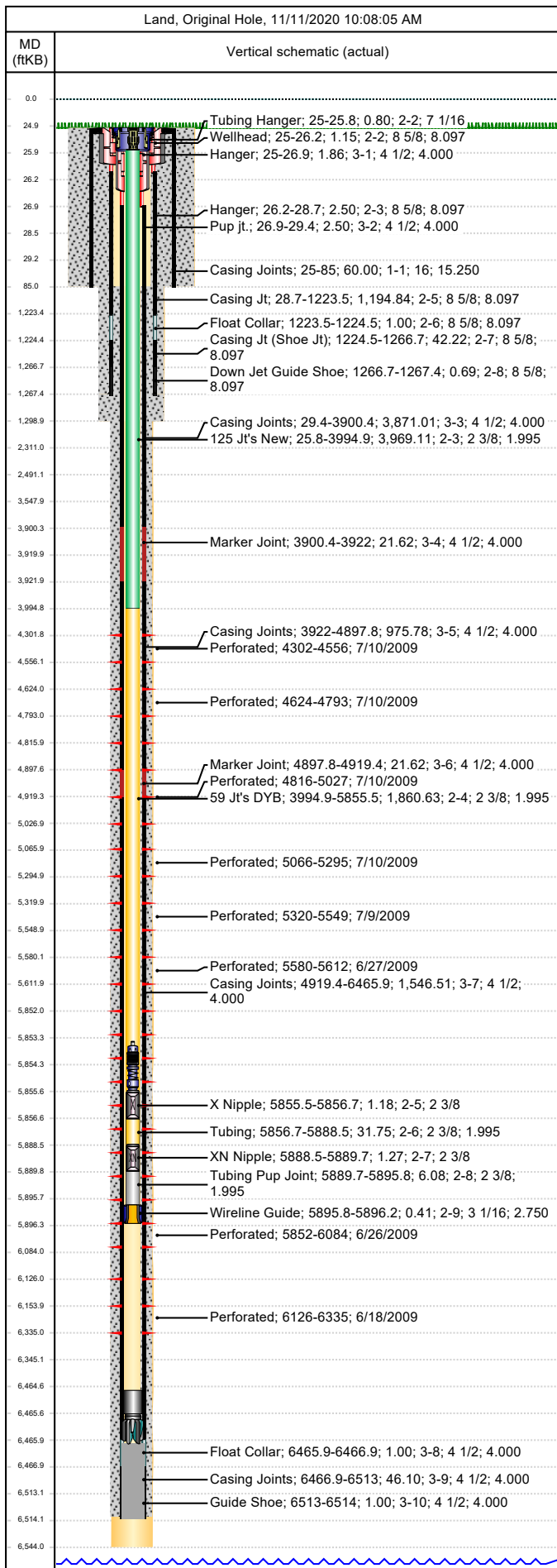


Job Details						
Job Category			Start Date		Rig/Unit End Date	
Casing Strings						
Csg Des	OD (in)	Wt/Len (lb/ft)	Grade	Top Thread	Set Depth (MD) (ftKB)	
Conductor	16	65.00	H-40		85	
Surface	8 5/8	24.00	K-55		1267.4	
Production Casing	4 1/2	11.60	P-110		6514	
Tubing Strings						
Tubing - Production set at 5,896.2ftKB on 5/30/2012 15:30						
Tubing Description			Run Date	String Length (ft)	Set Depth (MD) (ftKB)	
Tubing - Production			5/30/2012	5,896.23	5,896.2	
Item Des	Jts	OD (in)	Wt (lb/ft)	Grade	Len (ft)	Btm (ftKB)
KBGL		0.0			25.00	25.0
Tubing Hanger		7 1/16			0.80	25.8
125 Jt's New	125	2 3/8	4.70	L-80	3,969.11	3,994.9
59 Jt's DYB	59	2 3/8	4.70	L-80	1,860.63	5,855.5
X Nipple		2 3/8			1.18	5,856.7
Tubing	1	2 3/8	4.70	L-80	31.75	5,888.5
XN Nipple		2 3/8			1.27	5,889.7
Tubing Pup Joint		2 3/8	4.70	L-80	6.08	5,895.8
Wireline Guide		3 1/16			0.41	5,896.2
Perforations						
Date	Top (ftKB)	Btm (ftKB)	Shot Dens (shots/ft)	Entered Shot Total	Linked Zone	
7/10/2009	4,302.0	4,556.0	3.0	27	Mesa Verde - WMFK - Williams Fork, Original Hole	
7/10/2009	4,624.0	4,793.0	3.0	27	Mesa Verde - WMFK - Williams Fork, Original Hole	
7/10/2009	4,816.0	5,027.0	3.0	30	Mesa Verde - WMFK - Williams Fork, Original Hole	
7/10/2009	5,066.0	5,295.0	3.0	30	Mesa Verde - WMFK - Williams Fork, Original Hole	
7/9/2009	5,320.0	5,549.0	3.0	30	Mesa Verde - WMFK - Williams Fork, Original Hole	
6/27/2009	5,580.0	5,612.0	3.0	30	Mesa Verde - WMFK - Williams Fork, Original Hole	
6/26/2009	5,852.0	6,084.0	3.0	30	Mesa Verde - WMFK - Williams Fork, Original Hole	
6/18/2009	6,126.0	6,335.0	3.0	27	Mesa Verde - WMFK - Cameo Coal, Original Hole	
Other Strings						
Run Date	Pull Date	Set Depth (ftKB)	Com			
Other In Hole						
Des	Top (ftKB)	Btm (ftKB)	Run Date	Pull Date	Com	
Bear Claw Frac Plug	450.0	452.0	6/27/2009	7/8/2009	Bio Ball composite, flow thru, frac, bridge plug	
Bear Claw Frac Plug	4,190.0	4,192.0	7/29/2009	7/30/2009	Solid CBP - Kill plug.	
Bear Claw Frac Plug	4,200.0	4,202.0	7/10/2009	7/30/2009	Solid CBP - Kill plug.	
Bear Claw Frac Plug	4,590.0	4,592.0	7/10/2009	7/30/2009	Bio Ball composite, flow thru, frac, bridge plug	
Bear Claw Frac Plug	4,807.0	4,809.0	7/10/2009	7/30/2009	Bio Ball composite, flow thru, frac, bridge plug	
Bear Claw Frac Plug	5,056.0	5,058.0	7/10/2009	7/30/2009	Bio Ball composite, flow thru, frac, bridge plug	
Bear Claw Frac Plug	5,310.0	5,312.0	7/10/2009	7/30/2009	Bio Ball composite, flow thru, frac, bridge plug	
Bear Claw Frac Plug	5,564.0	5,566.0	7/9/2009	7/31/2009	Bio Ball composite, flow thru, frac, bridge plug	
Tubing Plunger	5,796.2	5,797.0	5/26/2010	5/29/2012		
Bumper Spring	5,797.0	5,798.4	5/26/2010	5/29/2012		
Bear Claw Frac Plug	5,836.0	5,838.0	6/27/2009	7/31/2009	Bio Ball composite, flow thru, frac, bridge plug	



# Wellbore Schematic

Well Name SKR-598-25-AV-18	Lease Chevron USA	Field Name Skinner Ridge	Business Unit Mid-Continent
-------------------------------	----------------------	-----------------------------	--------------------------------



Other In Hole					
Des	Top (ftKB)	Btm (ftKB)	Run Date	Pull Date	Com
Tubing Plunger	5,853.5	5,854.3	7/10/2012		
Bumper Spring	5,854.3	5,855.5	7/10/2012		
Bear Claw Frac Plug	6,108.0	6,110.0	6/26/2009	7/31/2009	Bio Ball composite, flow thru, frac, bridge plug
1/22/2010, Fill	6,382.0	6,464.7	1/22/2010	5/30/2012	Tag fill w/ slickline 1/22/2010
5/26/2010, Fill	6,382.0	6,464.7	5/26/2010	5/30/2012	Tag fill w/ slickline 5/26/10, same depth as 1/22/10
Pumped Off Bit-sub	6,464.7	6,465.5	7/31/2009		
Mill	6,465.5	6,466.0	7/31/2009		
PBTD	6,466.0	6,514.0	7/14/2008		