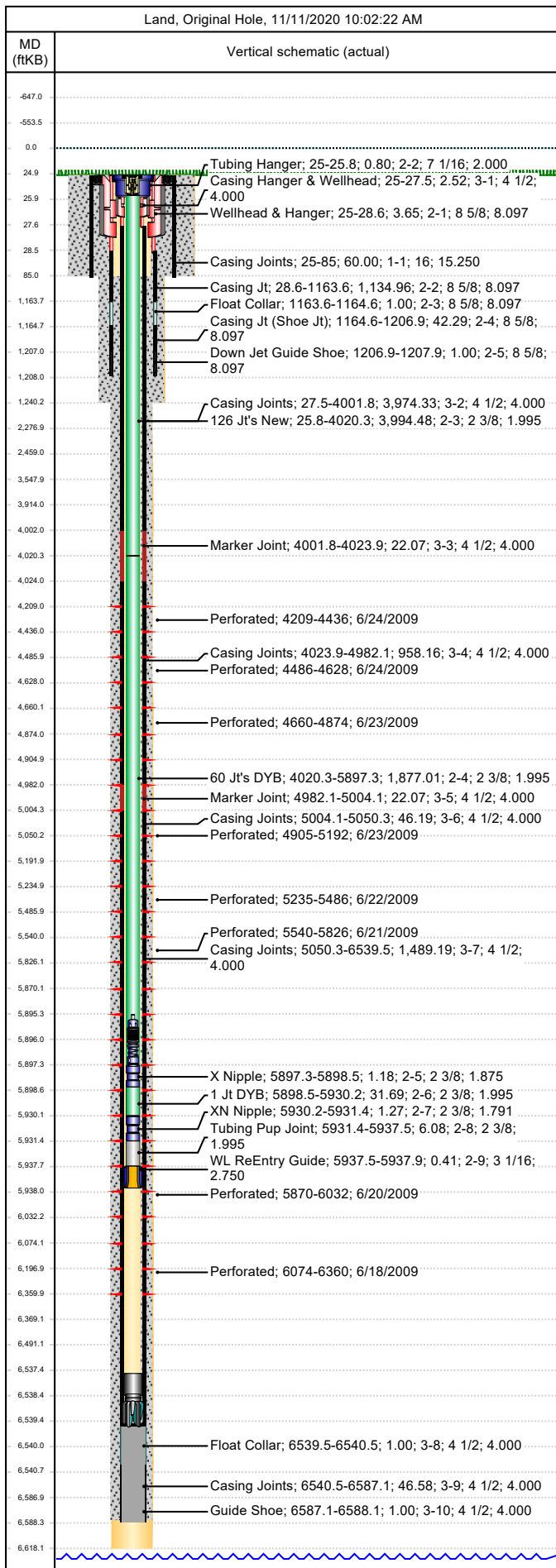




# Wellbore Schematic

|                               |                      |                             |                                |
|-------------------------------|----------------------|-----------------------------|--------------------------------|
| Well Name<br>SKR-598-25-AV-15 | Lease<br>Chevron USA | Field Name<br>Skinner Ridge | Business Unit<br>Mid-Continent |
|-------------------------------|----------------------|-----------------------------|--------------------------------|

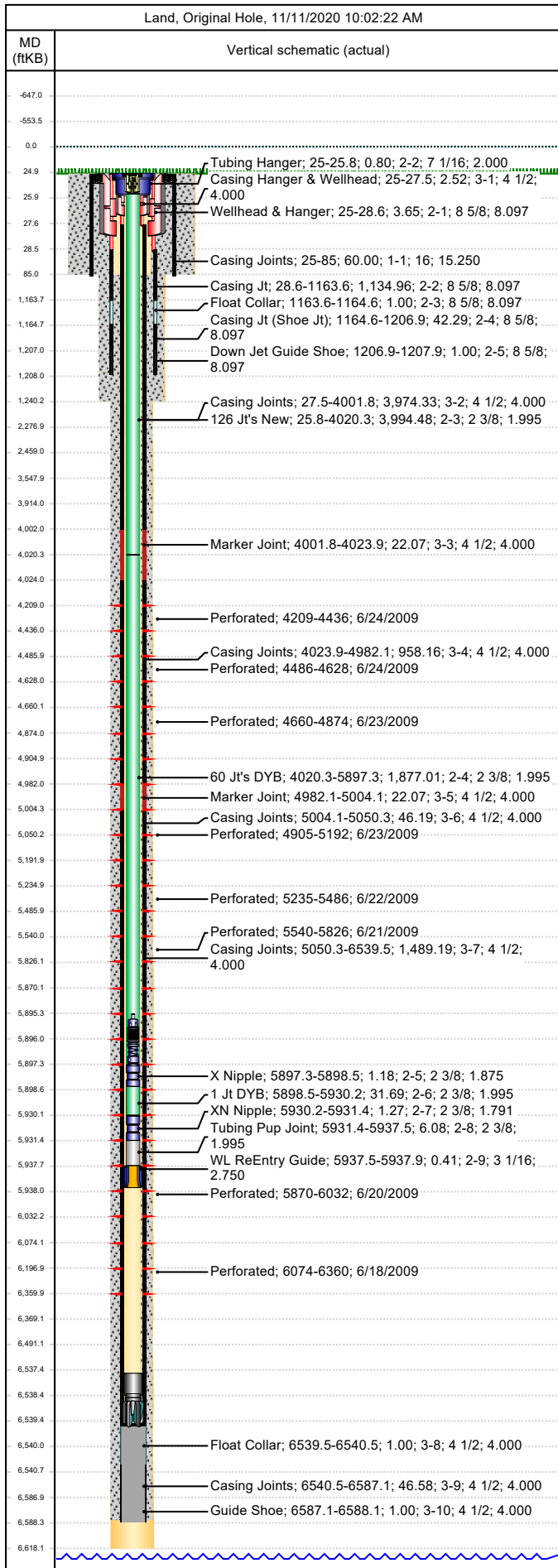


| Job Details   |            |                  |                      |                    |   |                   |                       |
|---|------------|------------------|----------------------|--------------------|---|-------------------|-----------------------|
| Job Category  |            |                  |                      | Start Date         |   | Rig/Unit End Date |                       |
|   |            |                  |                      |                    |   |                   |                       |
| Casing Strings  |            |                  |                      |                    |   |                   |                       |
| Csg Des   | OD (in)    | Wt/Len (lb/ft)   | Grade                | Top Thread         | Set Depth (MD) (ftKB)   |                   |                       |
| Conductor   | 16         | 65.00            | H-40                 |                    | 85  |                   |                       |
| Surface   | 8 5/8      | 24.00            | K-55                 |                    | 1207.9  |                   |                       |
| Production Casing   | 4 1/2      | 11.60            | N-80                 |                    | 6588.1  |                   |                       |
| Tubing Strings  |            |                  |                      |                    |   |                   |                       |
| Tubing - Production set at 5,937.9ftKB on 6/14/2012 16:30 |            |                  |                      |                    |   |                   |                       |
| Tubing Description  |            |                  | Run Date             |                    | String Length (ft)  |                   | Set Depth (MD) (ftKB) |
| Tubing - Production                                       |            |                  | 6/14/2012            |                    | 5,937.92  |                   | 5,937.9               |
| Item Des  | Jts        | OD (in)          | Wt (lb/ft)           | Grade              | Len (ft)  | Btm (ftKB)        |                       |
| KBGL  |            |                  |                      |                    | 25.00   | 25.0              |                       |
| Tubing Hanger   |            | 7 1/16           |                      |                    | 0.80  | 25.8              |                       |
| 126 Jt's New  | 126        | 2 3/8            | 4.70                 | L-80               | 3,994.48  | 4,020.3           |                       |
| 60 Jt's DYB   | 60         | 2 3/8            | 4.70                 | L-80               | 1,877.01  | 5,897.3           |                       |
| X Nipple  |            | 2 3/8            |                      |                    | 1.18  | 5,898.5           |                       |
| 1 Jt DYB  | 1          | 2 3/8            | 4.70                 | L-80               | 31.69   | 5,930.2           |                       |
| XN Nipple   |            | 2 3/8            |                      |                    | 1.27  | 5,931.4           |                       |
| Tubing Pup Joint  |            | 2 3/8            | 4.70                 | L-80               | 6.08  | 5,937.5           |                       |
| WL ReEntry Guide  |            | 3 1/16           |                      |                    | 0.41  | 5,937.9           |                       |
| Tubung Landed @   |            |                  |                      |                    |   | 5,937.9           |                       |
| Perforations  |            |                  |                      |                    |   |                   |                       |
| Date  | Top (ftKB) | Btm (ftKB)       | Shot Dens (shots/ft) | Entered Shot Total | Linked Zone   |                   |                       |
| 6/24/2009   | 4,209.0    | 4,436.0          | 1.0                  | 27                 | Mesa Verde - WMFK - Williams Fork, Original Hole                                    |                   |                       |
| 6/24/2009   | 4,486.0    | 4,628.0          | 1.0                  | 30                 | Mesa Verde - WMFK - Williams Fork, Original Hole                                    |                   |                       |
| 6/23/2009   | 4,660.0    | 4,874.0          | 1.0                  | 30                 | Mesa Verde - WMFK - Williams Fork, Original Hole                                    |                   |                       |
| 6/23/2009   | 4,905.0    | 5,192.0          | 1.0                  | 27                 | Mesa Verde - WMFK - Williams Fork, Original Hole                                    |                   |                       |
| 6/22/2009   | 5,235.0    | 5,486.0          | 1.0                  | 30                 | Mesa Verde - WMFK - Williams Fork, Original Hole                                    |                   |                       |
| 6/21/2009   | 5,540.0    | 5,826.0          | 1.0                  | 30                 | Mesa Verde - WMFK - Williams Fork, Original Hole                                    |                   |                       |
| 6/20/2009   | 5,870.0    | 6,032.0          | 1.0                  | 30                 | Mesa Verde - WMFK - Williams Fork, Original Hole                                    |                   |                       |
| 6/18/2009   | 6,074.0    | 6,360.0          | 1.0                  | 30                 | Mesa Verde - WMFK - Cameo Coal, Original Hole                                       |                   |                       |
| Other Strings   |            |                  |                      |                    |   |                   |                       |
| Run Date  | Pull Date  | Set Depth (ftKB) |                      | Com                |   |                   |                       |
|   |            |                  |                      |                    |   |                   |                       |
| Other In Hole   |            |                  |                      |                    |   |                   |                       |
| Des   | Top (ftKB) | Btm (ftKB)       | Run Date             | Pull Date          | Com   |                   |                       |
| Bear Claw Frac Plug                                       | 4,170.0    | 4,172.0          | 6/25/2009            | 10/24/2009         | Solid composite plug  |                   |                       |
| Bear Claw Frac Plug                                       | 4,460.0    | 4,462.0          | 6/24/2009            | 10/24/2009         | Bio Ball composite, flow thru, frac, bridge plug                                    |                   |                       |
| Bear Claw Frac Plug                                       | 4,643.0    | 4,645.0          | 6/24/2009            | 10/24/2009         | Bio Ball composite, flow thru, frac, bridge plug                                    |                   |                       |
| Bear Claw Frac Plug                                       | 4,894.0    | 4,896.0          | 6/23/2009            | 10/24/2009         | Bio Ball composite, flow thru, frac, bridge plug                                    |                   |                       |
| Bear Claw Frac Plug                                       | 5,211.0    | 5,213.0          | 6/23/2009            | 10/24/2009         | Bio Ball composite, flow thru, frac, bridge plug                                    |                   |                       |
| Bear Claw Frac Plug                                       | 5,512.0    | 5,514.0          | 6/22/2009            | 10/24/2009         | Bio Ball composite, flow thru, frac, bridge plug                                    |                   |                       |
| Tubing Plunger  | 5,746.9    | 5,747.6          | 6/23/2010            | 6/17/2011          |   |                   |                       |
| Bumper Spring   | 5,747.6    | 5,748.9          | 6/23/2010            | 6/17/2011          |   |                   |                       |
| Bumper Spring   | 5,747.6    | 5,748.9          | 6/17/2011            | 8/4/2011           | Slickline broached tbg. - Tagged fill @ 6400' - Dropped new bumper spring. 06-17-11 |                   |                       |
| Bear Claw Frac Plug                                       | 5,844.0    | 5,846.0          | 6/21/2009            | 10/24/2009         | Bio Ball composite, flow thru, frac, bridge plug                                    |                   |                       |



# Wellbore Schematic

|                               |                      |                             |                                |
|-------------------------------|----------------------|-----------------------------|--------------------------------|
| Well Name<br>SKR-598-25-AV-15 | Lease<br>Chevron USA | Field Name<br>Skinner Ridge | Business Unit<br>Mid-Continent |
|-------------------------------|----------------------|-----------------------------|--------------------------------|



| Other In Hole              |            |            |            |            |  |
|----------------------------|------------|------------|------------|------------|--|
| Des                        | Top (ftKB) | Btm (ftKB) | Run Date   | Pull Date  | Com  |
| Tubing Plunger             | 5,895.3    | 5,896.1    | 7/13/2012  |            |  |
| Bumper Spring              | 5,896.1    | 5,897.3    | 7/13/2012  |            |  |
| Bear Claw Frac Plug        | 6,052.0    | 6,054.0    | 6/20/2009  | 10/24/2009 | Bio Ball composite, flow thru, frac, bridge plug |
| Fill (Sand / Mud / Debris) | 6,400.0    | 6,470.0    | 6/17/2011  | 6/14/2012  |  |
| Fill, 6/23/2010            | 6,470.0    | 6,537.5    | 6/23/2010  | 6/14/2012  |  |
| Pumped Off Bit-sub         | 6,537.5    | 6,538.3    | 10/26/2009 |            | FN on Bit-Sub, 3 1/16"                           |
| Mill                       | 6,538.3    | 6,539.5    | 10/26/2009 |            | 3 3/4" pump off mill.                            |
| PBTD                       | 6,539.5    | 6,588.1    | 4/17/2008  |            |  |