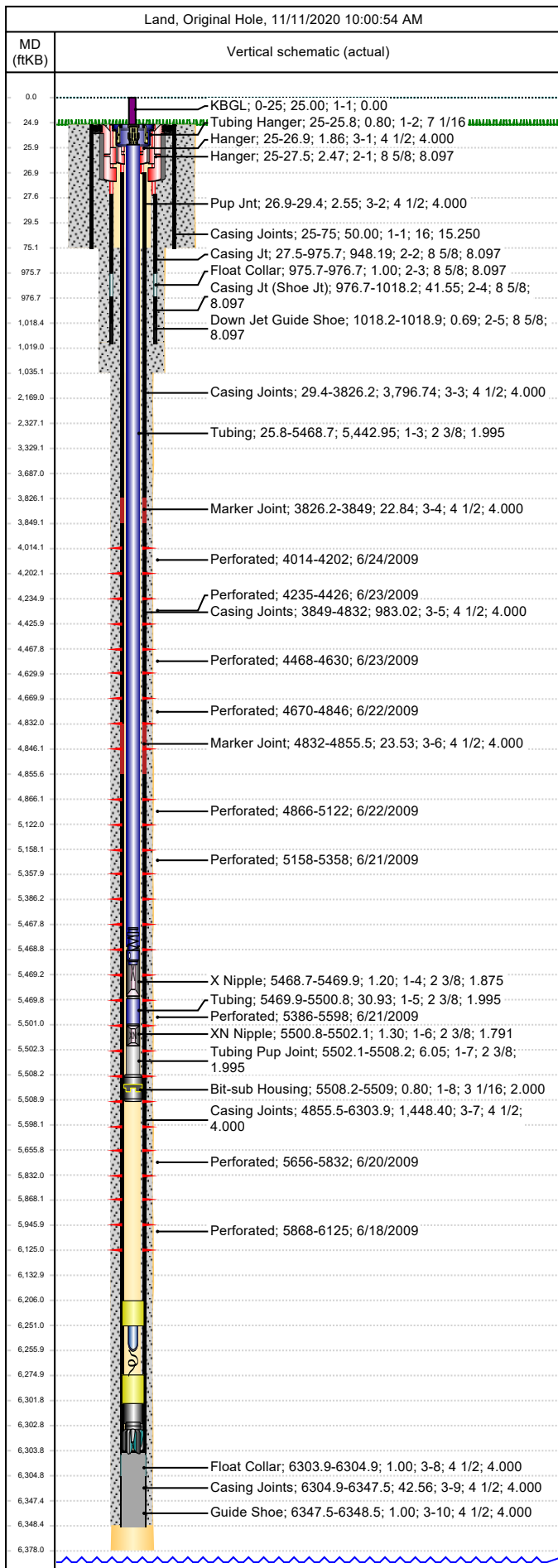




Wellbore Schematic

Well Name SKR-598-25-AV-12	Lease Chevron USA	Field Name Skinner Ridge	Business Unit Mid-Continent
-------------------------------	----------------------	-----------------------------	--------------------------------

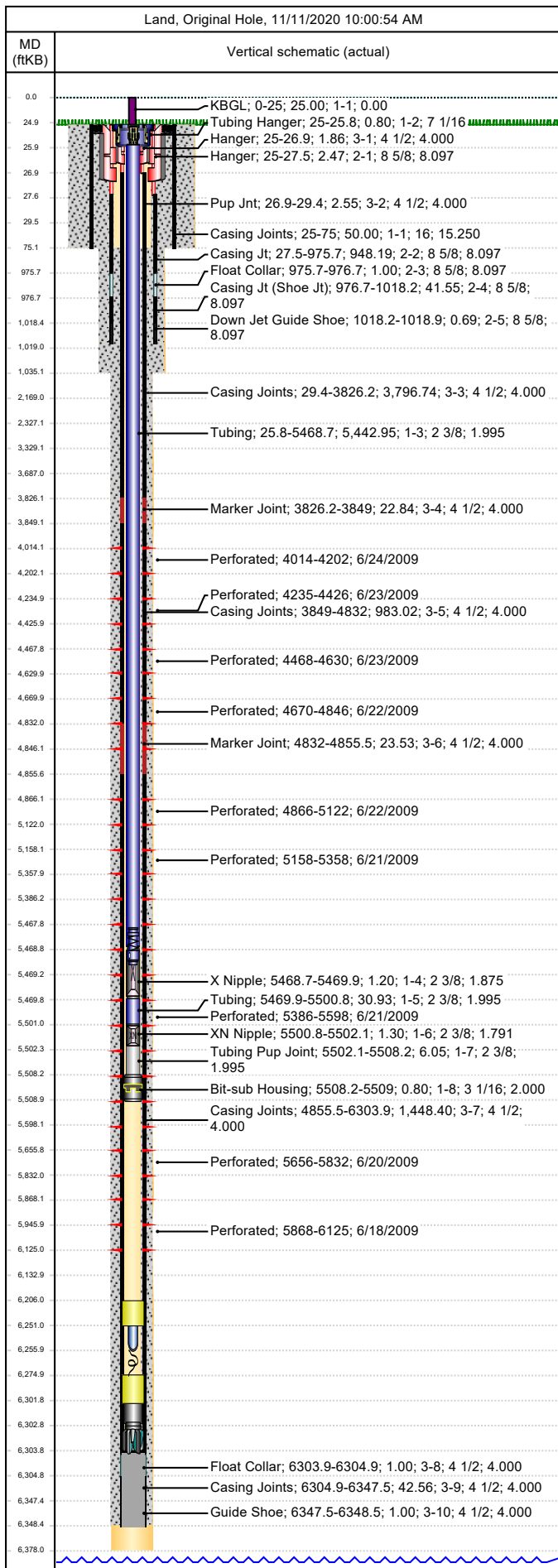


Job Details						
Job Category			Start Date		Rig/Unit End Date	
Casing Strings						
Csg Des	OD (in)	Wt/Len (lb/ft)	Grade	Top Thread	Set Depth (MD) (ftKB)	
Conductor	16	65.00	H-40		75	
Surface	8 5/8	24.00	K-55		1018.9	
Production Casing	4 1/2	11.60	L-80		6348.5	
Tubing Strings						
Tubing - Production set at 5,509.0ftKB on 8/18/2009 18:00						
Tubing Description		Run Date		String Length (ft)		Set Depth (MD) (ftKB)
Tubing - Production		8/18/2009		5,509.03		5,509.0
Item Des	Jts	OD (in)	Wt (lb/ft)	Grade	Len (ft)	Btm (ftKB)
KBGL		0.0			25.00	25.0
Tubing Hanger		7 1/16			0.80	25.8
Tubing	180	2 3/8	4.70	L-80	5,442.95	5,468.7
X Nipple		2 3/8			1.20	5,469.9
Tubing	1	2 3/8	4.70	L-80	30.93	5,500.8
XN Nipple		2 3/8			1.30	5,502.1
Tubing Pup Joint		2 3/8	4.70	L-80	6.05	5,508.2
Bit-sub Housing		3 1/16			0.80	5,509.0
Tubing Landed @					0.00	5,509.0
Perforations						
Date	Top (ftKB)	Btm (ftKB)	Shot Dens (shots/ft)	Entered Shot Total	Linked Zone	
6/24/2009	4,014.0	4,202.0	3.0	30	Mesa Verde - WMFK - Williams Fork, Original Hole	
6/23/2009	4,235.0	4,426.0	3.0	30	Mesa Verde - WMFK - Williams Fork, Original Hole	
6/23/2009	4,468.0	4,630.0	3.0	27	Mesa Verde - WMFK - Williams Fork, Original Hole	
6/22/2009	4,670.0	4,846.0	3.0	27	Mesa Verde - WMFK - Williams Fork, Original Hole	
6/22/2009	4,866.0	5,122.0	3.0	30	Mesa Verde - WMFK - Williams Fork, Original Hole	
6/21/2009	5,158.0	5,358.0	3.0	30	Mesa Verde - WMFK - Williams Fork, Original Hole	
6/21/2009	5,386.0	5,598.0	3.0	30	Mesa Verde - WMFK - Williams Fork, Original Hole	
6/20/2009	5,656.0	5,832.0	3.0	30	Mesa Verde - WMFK - Williams Fork, Original Hole	
6/18/2009	5,868.0	6,125.0	3.0	27	Mesa Verde - WMFK - Cameo Coal, Original Hole	
Other Strings						
Run Date	Pull Date	Set Depth (ftKB)	Com			
Other In Hole						
Des	Top (ftKB)	Btm (ftKB)	Run Date	Pull Date	Com	
Bear Claw Frac Plug	3,980.0	3,982.0	6/24/2009	8/10/2009	Solid composite plug.	
Bear Claw Frac Plug	4,228.0	4,230.0	6/24/2009	8/10/2009	Bio Ball composite, flow thru, frac, bridge plug	
Bear Claw Frac Plug	4,446.0	4,448.0	6/23/2009	8/11/2009	Bio Ball composite, flow thru, frac, bridge plug	
Bear Claw Frac Plug	4,657.0	4,659.0	6/23/2009	8/11/2009	Bio Ball composite, flow thru, frac, bridge plug	
Bear Claw Frac Plug	4,863.0	4,865.0	6/22/2009	8/11/2009	Bio Ball composite, flow thru, frac, bridge plug	
Bear Claw Frac Plug	5,151.0	5,153.0	6/22/2009	8/18/2009	Bio Ball composite, flow thru, frac, bridge plug	
Bear Claw Frac Plug	5,373.0	5,375.0	6/21/2009	8/18/2009	Bio Ball composite, flow thru, frac, bridge plug	
Bumpedr Spring	5,468.0	5,469.0	6/17/2011			
Bear Claw Frac Plug	5,626.0	5,628.0	6/21/2009	8/18/2009	Bio Ball composite, flow thru, frac, bridge plug	
Bear Claw Frac Plug	5,849.0	5,851.0	6/20/2009	8/18/2009	Bio Ball composite, flow thru, frac, bridge plug	



Wellbore Schematic

Well Name SKR-598-25-AV-12	Lease Chevron USA	Field Name Skinner Ridge	Business Unit Mid-Continent
-------------------------------	----------------------	-----------------------------	--------------------------------



Other In Hole					
Des	Top (ftKB)	Btm (ftKB)	Run Date	Pull Date	Com
Fill (Sand / Mud / Debris)	6,206.0	6,251.0	6/17/2011		Slickline broached tbq. - Tag fill @ 6206' - Drop bumper spring. 06-17-11
GoDevil Cutter	6,251.0	6,256.0	5/27/2010		
Slick-line tools.	6,256.0	6,275.0	5/27/2010		
Sand Fill	6,275.0	6,301.9	5/27/2010		Tag w/ slickline 5/27/2010
Pumped Off Bit-sub	6,301.9	6,302.7	8/18/2009		
Mill	6,302.7	6,303.9	8/18/2009		
PBTD	6,303.9	6,348.5	7/3/2008		