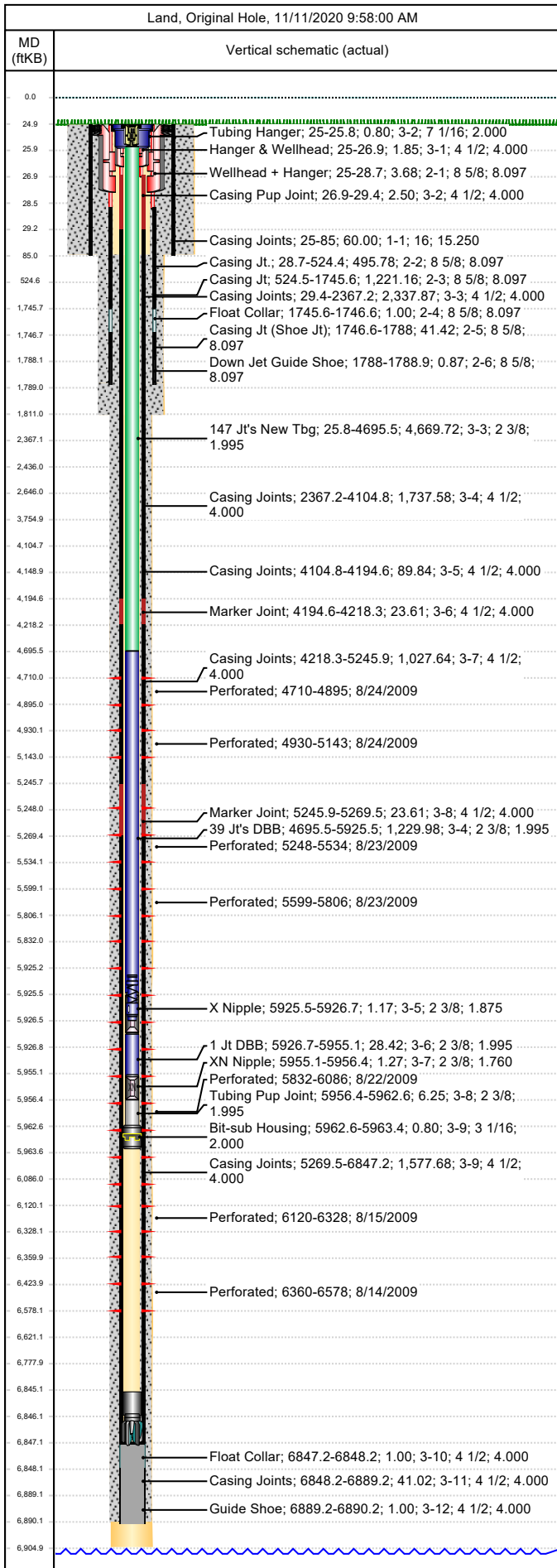




Wellbore Schematic

Well Name SKR-598-25-AV-07	Lease Chevron USA	Field Name Skinner Ridge	Business Unit Mid-Continent
-------------------------------	----------------------	-----------------------------	--------------------------------

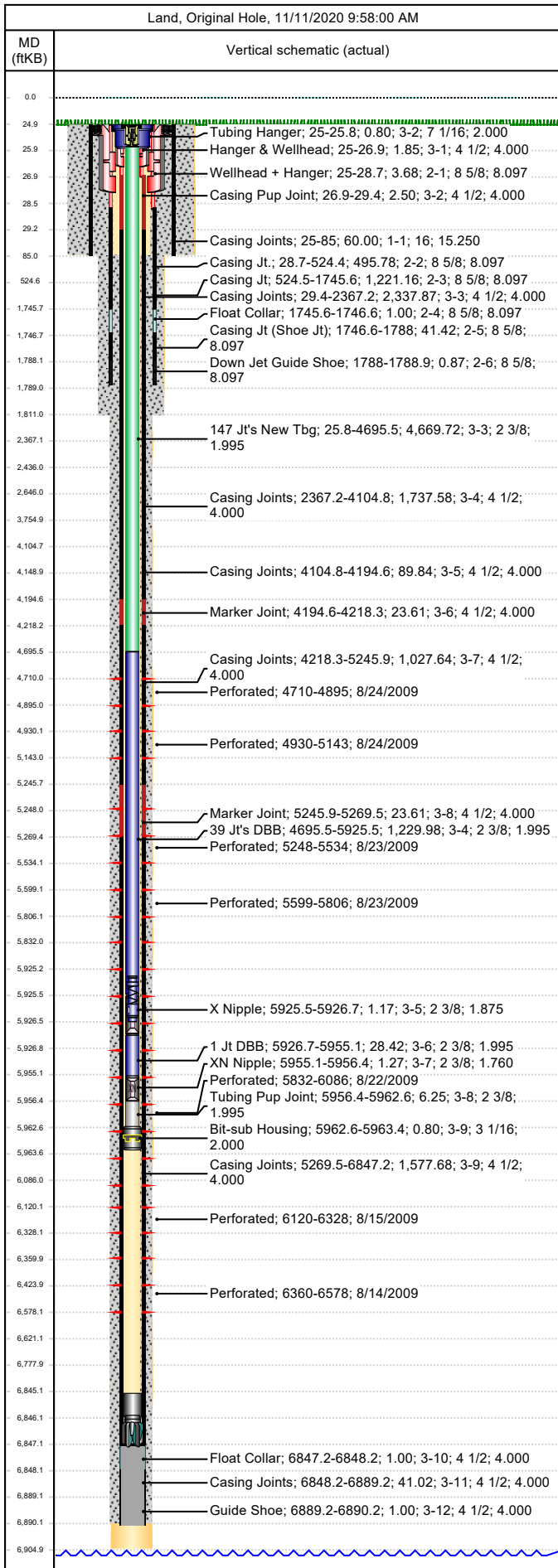


Job Details						
Job Category			Start Date		Rig/Unit End Date	
Casing Strings						
Csg Des	OD (in)	Wt/Len (lb/ft)	Grade	Top Thread	Set Depth (MD) (ftKB)	
Conductor	16	75.00	H-40		85	
Surface	8 5/8	24.00	K-55		1788.9	
Production Casing	4 1/2	11.60	N-80		6890.2	
Tubing Strings						
Tubing - Production set at 5,963.4ftKB on 4/19/2013 17:00						
Tubing Description			Run Date	String Length (ft)	Set Depth (MD) (ftKB)	
Tubing - Production			4/19/2013	5,963.41	5,963.4	
Item Des	Jts	OD (in)	Wt (lb/ft)	Grade	Len (ft)	Btm (ftKB)
KBGL					25.00	25.0
Tubing Hanger		7 1/16		4140	0.80	25.8
147 Jt's New Tbg	147	2 3/8	4.70	L-80	4,669.72	4,695.5
39 Jt's DBB	39	2 3/8	4.70	L-80	1,229.98	5,925.5
X Nipple		2 3/8			1.17	5,926.7
1 Jt DBB	1	2 3/8	4.70	L-80	28.42	5,955.1
XN Nipple		2 3/8			1.27	5,956.4
Tubing Pup Joint		2 3/8	4.70	L-80	6.25	5,962.6
Bit-sub Housing		3 1/16			0.80	5,963.4
Tubing Landed @						5,963.4
Perforations						
Date	Top (ftKB)	Btm (ftKB)	Shot Dens (shots/ft)	Entered Shot Total	Linked Zone	
8/24/2009	4,710.0	4,895.0	3.0	33	Mesa Verde - WMFK - Williams Fork, Original Hole	
8/24/2009	4,930.0	5,143.0	3.0	30	Mesa Verde - WMFK - Williams Fork, Original Hole	
8/23/2009	5,248.0	5,534.0	3.0	27	Mesa Verde - WMFK - Williams Fork, Original Hole	
8/23/2009	5,599.0	5,806.0	3.0	27	Mesa Verde - WMFK - Williams Fork, Original Hole	
8/22/2009	5,832.0	6,086.0	3.0	27	Mesa Verde - WMFK - Williams Fork, Original Hole	
8/15/2009	6,120.0	6,328.0	3.0	30	Mesa Verde - WMFK - Williams Fork, Original Hole	
8/14/2009	6,360.0	6,578.0	3.0	27	Mesa Verde - WMFK-Cameo Coal, Original Hole	
Other Strings						
Run Date	Pull Date	Set Depth (ftKB)	Com			
Other In Hole						
Des	Top (ftKB)	Btm (ftKB)	Run Date	Pull Date	Com	
Bear Claw CBP	4,702.0	4,704.0	8/25/2009	11/6/2009	Kill plug	
Bear Claw Frac Plug	4,908.0	4,911.0	8/24/2009	11/6/2009	Bio Ball composite, flow thru, frac, bridge plug	
Tubing Plunger	4,973.2	4,974.0	8/4/2011	4/10/2012	Recovered by Op's	
Tbg. Perfs. 04/20/11	5,100.0	5,102.0	4/20/2011	5/11/2011	Tbg. perfs. 5100'-02' (8 holes). 04/20/11	
Fish	5,114.0	5,876.0	5/6/2011	5/11/2011	Made chemical cut @5114. (5/6/11). Made outside cut @5407'	
Fill 04/20/11	5,125.0	5,656.0	4/20/2011	5/11/2011	Tag sand w/ E-Line @ 5125'. 04/20/11	
Bear Claw Frac Plug	5,195.0	5,198.0	8/24/2009	11/7/2009	Bio Ball composite, flow thru, frac, bridge plug	
Bear Claw Frac Plug	5,588.0	5,591.0	8/23/2009	11/7/2009	Bio Ball composite, flow thru, frac, bridge plug	
Fill, 11/27/2012	5,640.0	6,572.0	11/27/2012	4/19/2013	Tag w/ Slick-Line	
Sand Bridge	5,656.0	5,833.2	1/24/2011	5/11/2011	Tag attempt to pull plunger	
Bear Claw Frac Plug	5,820.0	5,822.0	8/23/2009	11/7/2009	Bio Ball composite, flow thru, frac, bridge plug	



Wellbore Schematic

Well Name SKR-598-25-AV-07	Lease Chevron USA	Field Name Skinner Ridge	Business Unit Mid-Continent
-------------------------------	----------------------	-----------------------------	--------------------------------



Other In Hole					
Des	Top (ftKB)	Btm (ftKB)	Run Date	Pull Date	Com
Bumper Spring	5,925.3	5,926.5	6/24/2013		Set spring w/ slickline unit 6/24/2013 after pulling & LD crimped jt.
Bear Claw Frac Plug	6,112.0	6,114.0	8/22/2009	11/7/2009	Bio Ball composite, flow thru, frac, bridge plug
Bear Claw Frac Plug	6,343.0	6,345.0	8/15/2009	11/7/2009	Bio Ball composite, flow thru, frac, bridge plug
Fill, 8/4/2011	6,572.0	6,845.3	8/4/2011	4/19/2013	Tag w/ Slick-Line
Fill, 7/27/2010	6,656.0	6,845.0	7/27/2010	5/16/2011	Clean Out.
Fill, 2/19/2010	6,845.0	6,847.2	2/19/2010	5/16/2011	Tag w/ slickline, 1/20/2010
Pumped off	6,845.2	6,846.0	11/9/2009		
Mill	6,846.0	6,847.2	11/9/2009		
PBTD	6,847.2	6,890.1	4/26/2008		