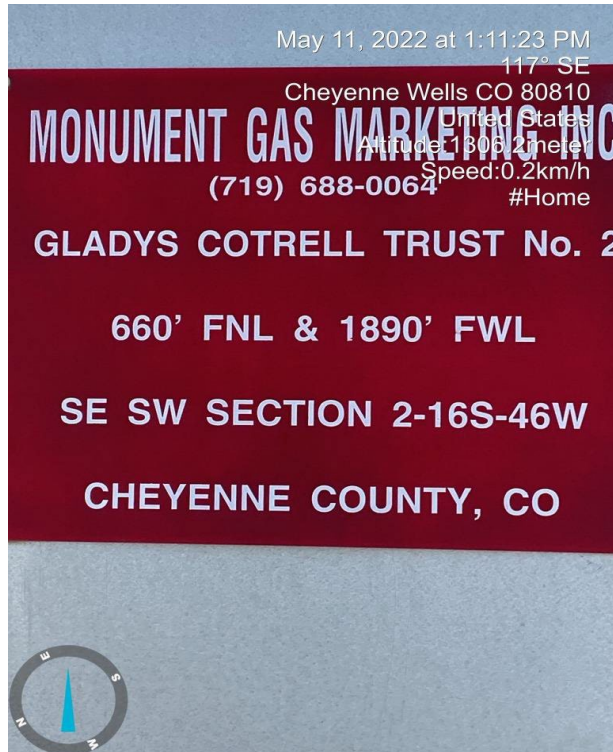


## Inspection Photos

Operator: Monument Gas Marketing Inc. (59925)

Lease: Gladys Cotrell Trust #2

Facility ID/API, 285920 / 05-017-07641

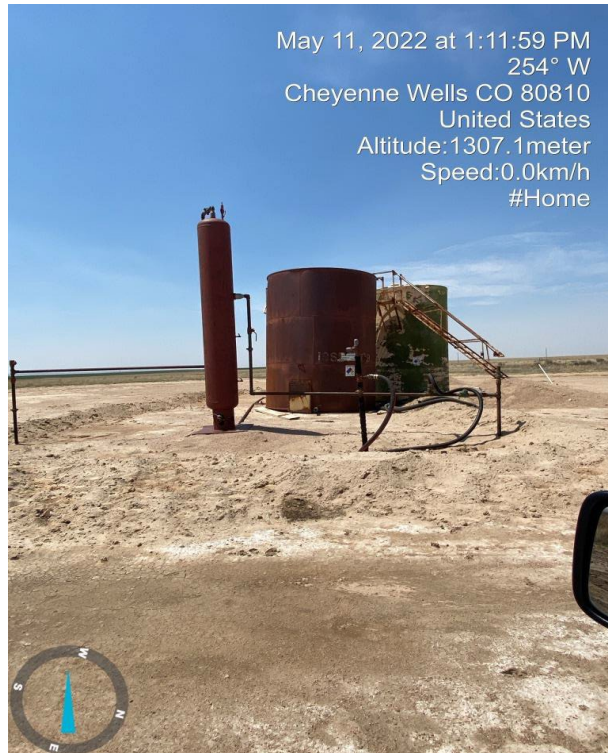


1. Lease sign

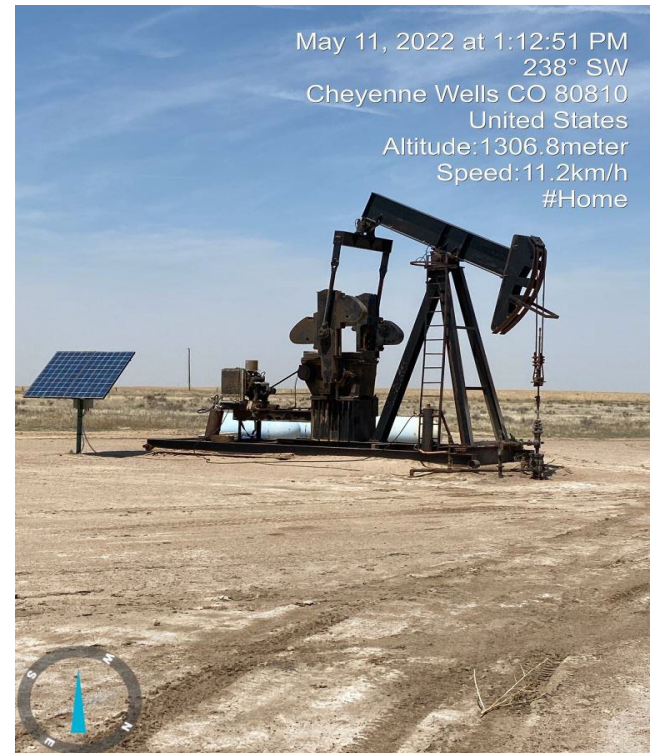


2. Meter Sheds

**Inspection Photos**  
**Operator: Monument Gas Marketing Inc. (59925)**  
**Lease: Gladys Cotrell Trust #2**  
**Facility ID/API, 285920 / 05-017-07641**



**3. Tank Battery**



**4. Wellhead equipment**

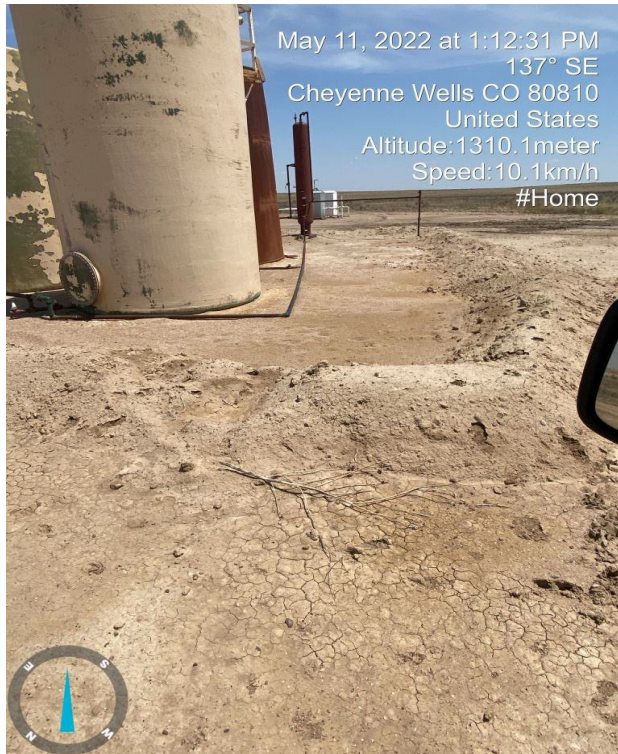


## Inspection Photos

Operator: Monument Gas Marketing Inc. (59925)

Lease: Gladys Cotrell Trust #2

Facility ID/API, 285920 / 05-017-07641



5. Inadequate Berms



6. Inadequate Berms



**Inspection Photos**  
**Operator: Monument Gas Marketing Inc. (59925)**  
**Lease: Gladys Cotrell Trust #2**  
**Facility ID/API, 285920 / 05-017-07641**



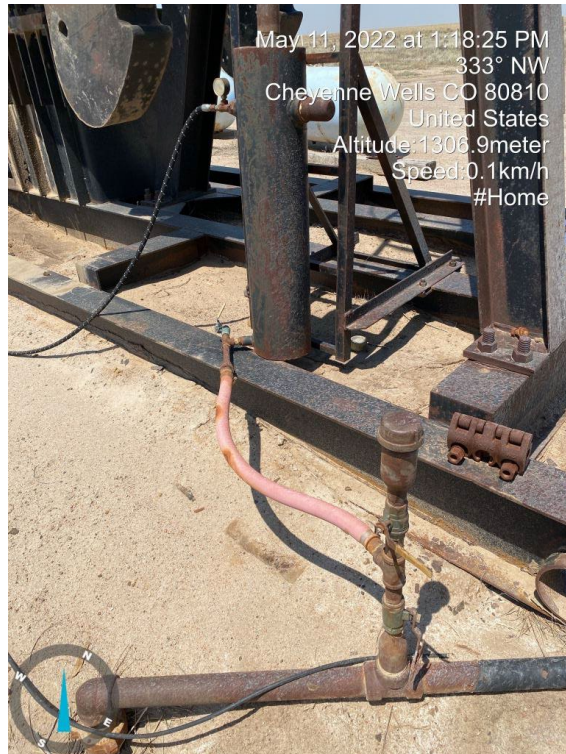
**7. Gas supply line from wellhead scrubber to engine scrubber.**



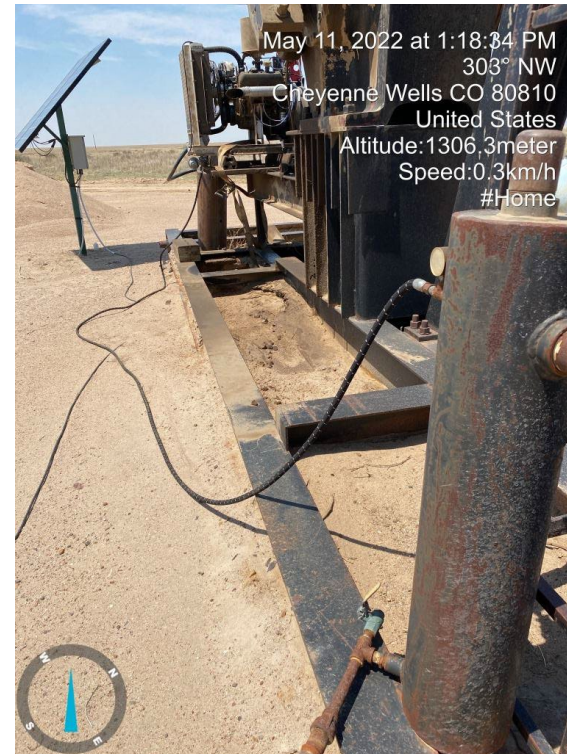
**8. Casing gas directed to scrubber.**



**Inspection Photos**  
**Operator: Monument Gas Marketing Inc. (59925)**  
**Lease: Gladys Cotrell Trust #2**  
**Facility ID/API, 285920 / 05-017-07641**



**9. Casing gas to wellhead scrubber**



**10. Casing gas from wellhead scrubber to engine scrubber.**