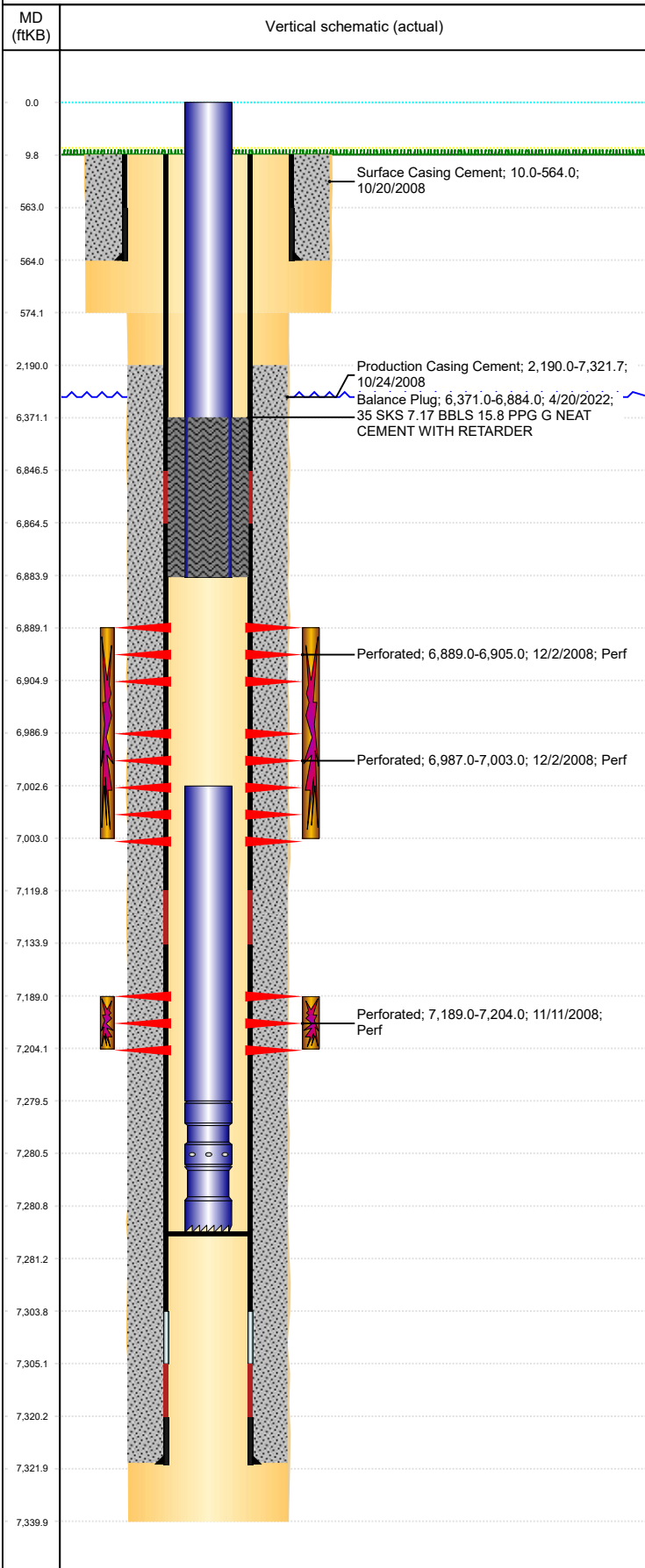


Well Name: MCMILLEN G19-19

VERTICAL, ORIGINAL HOLE, 5/5/2022 12:42:27 PM



Well Header					
API 05-123-25815	Business Unit DJ BASIN	District 15	Well Config VERTICAL		
KB - GL / MSL (ft... 10.00	Spud Date 10/19/2008	P & A Date	Well Production Status TA	SoRT Yes	
Comment					

Surface Location (Congressional)

Qtr 3 NW	Qtr 4 NW	Section 19	Twonshp 4	Twonsh... N	Range 65	Rng E... W	Actual Latitude (°) 40.30189872	Actual Longitude (°) -104.71111824
-------------	-------------	---------------	--------------	----------------	-------------	---------------	------------------------------------	---------------------------------------

Wellbore Sections

Section Des	Size (in)	Act Top, MD (ftKB)	Act Btm, MD (ftKB)
SURFACE	12 1/4	10	574
PRODUCTION	7 7/8	574	7,340

Casing Strings

Csg Des	Run Date	OD (in)	Wt/Len (lb/ft)	Grade	Top, MD (ftKB)	MD (ftKB)
Surface	10/20/2008	8 5/8	24.00	J-55	10.0	564.0
Production	10/23/2008	4 1/2	11.60	M-80	10.0	7,321.7

Cement

Des	Start Date	Top (ftKB)	Btm (ftKB)
Surface Casing Cement	10/20/2008	10.0	564.0
Production Casing Cement	10/24/2008	2,190.0	7,321.7
Balance Plug	4/20/2022	6,371.0	6,884.0

Zone Statuses

Zone Name	Status Date	Status	Fluid Type	Job	Prod Method
NIOBRARA	12/2/2008	PR		DRILLING/COMPLETION - ORIGINAL, 10/19/200...	
NIOBRARA	4/20/2022	TA		SET CEMENT PLUG, 4/11/2022 00:00	
CODELL	12/2/2008	PR		DRILLING/COMPLETION - ORIGINAL, 10/19/200...	
CODELL	4/20/2022	TA		SET CEMENT PLUG, 4/11/2022 00:00	

Perforation Data

Linked Zone	Bnch/Stg	Entered Shot Total	Top (ftKB)	Btm (ftKB)	Date
NIOBRARA, ORIGINAL HOLE	A	32	6,889.00	6,905.00	12/2/2008
NIOBRARA, ORIGINAL HOLE	B	32	6,987.00	7,003.00	12/2/2008
CODELL, ORIGINAL HOLE	01	60	7,189.00	7,204.00	11/11/2008

Stimulation Intervals

Zone	Start Date	Top (ftKB)	Btm (ftKB)
NIOBRARA, ORIGINAL HOLE	12/2/2008	6,889.0	7,003.0
CODELL, ORIGINAL HOLE	12/2/2008	7,189.0	7,204.0

Other In Hole

Run Date	Des	Make	OD (in)	Top (ftKB)	Btm (ftKB)

Logs

Date	Type	Top, MD (ftKB)	Btm, MD (ftKB)
10/23/2008	Caliper/Comp. Density/Neutron/GR/SP/ML	2,400.0	7,343.0
10/23/2008	DIL/GR/SP/Caliper	564.0	7,343.0
11/6/2008	CBL/CCL/GR	1,900.0	7,278.0

Plug Back Total Depths

Date	Type	Com	Depth (ftKB)
10/23/2008	FLOAT COLLAR		7,321.0
2/18/2009	PLUG REMNANTS		7,281.0