

Magpie Operating, Inc
Richfield-Wirick-Federal #1
API: 05-107-05048
LOCATION ID: 316739
SESE 14 5N88W
Routt County, Colorado

GAS CAPTURE PLAN

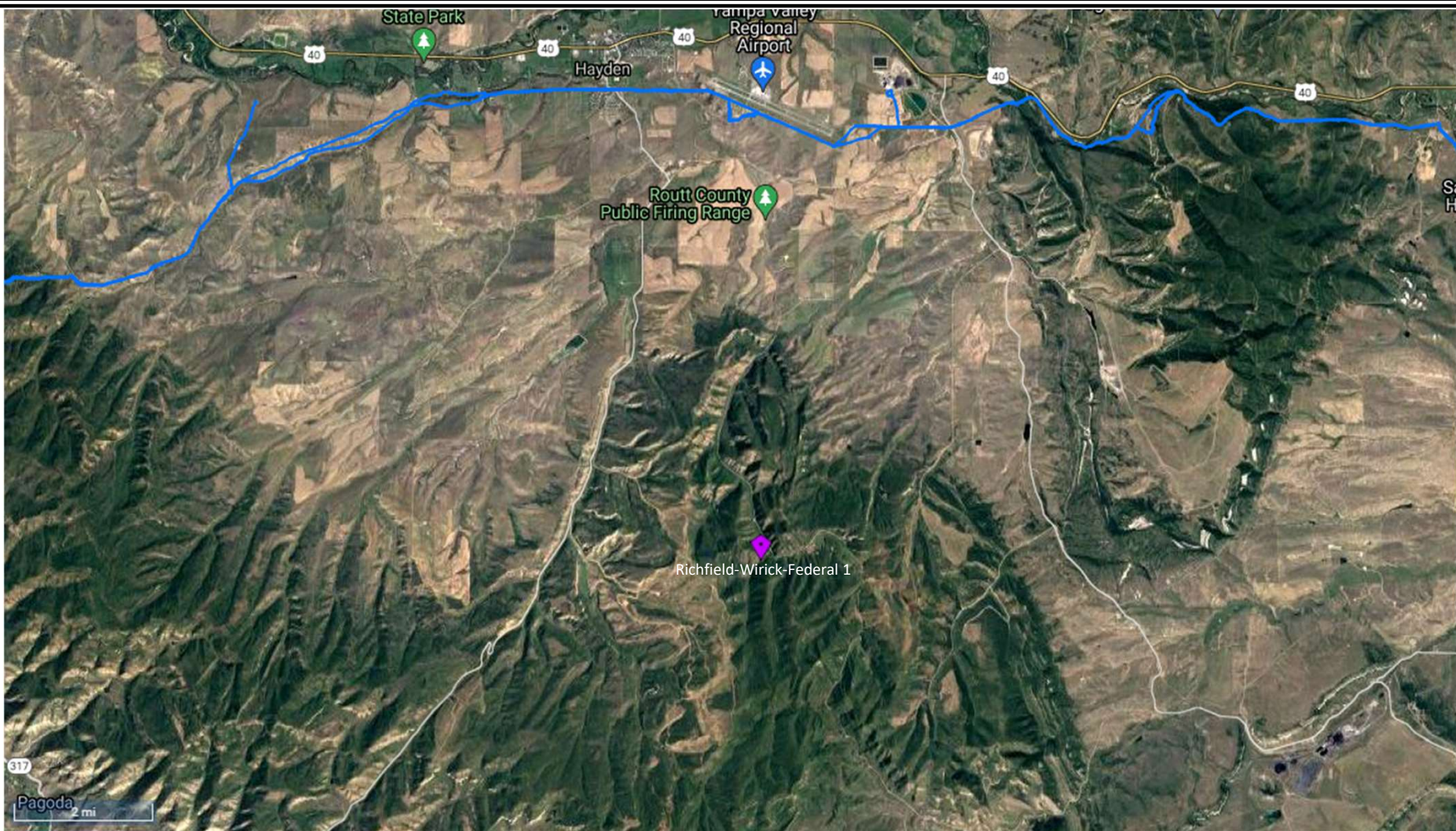
Magpie Operating, Inc has drafted this plan to comply with Rules 903.d and 903.e.(1).B.

This existing location was constructed in 1960. It consists of the consolidated production facilities for Magpie's operated wells: Richfield-Wirick-Federal #1. The location contains a heater-treater, 2 oil storage tanks, 1 produced water tanks, 1 pump jack w/ a natural gas engine, and 2 ECDs. This is not a request to Vent of Flare.

This location has an APEN with CDPHE, AIRS ID 107-0127-001.

903.d: Emissions During Production	Magpie Operating, Inc is utilizing the natural gas to run production equipment onsite. Natural gas production is minimal and often requires supplemental propane to keep equipment running. Regardless, a combustor is installed at the existing Richfield-Wirick-Federal location, where all products from this well will be piped, to allow for flexibility in case gas is encountered during production. This combustor will be located in the process stream after separation has occurred and will comply with relevant regulations under Colorado Department of Public Health and Environment – Air Quality Control Division.
903.e.(1).B.i: Description of the Closest Gas Gathering System	The nearest gas gathering system is located approximately one mile to the east of the proposed well pad. Please see the attached Nearest Gas Gathering Line map.
903. e.(1).B.ii: Company operating the closest Gas Gathering System	It is operated by Public Service Company of Colorado

<p>903. e.(1).B.iii: Operator's Plan to Connect</p>	<p>Magpie Operating, Inc does not currently intend to construct a line to connect this well pad to the gathering line.</p> <p>If gas is encountered, the quantity and quality is not expected to be enough to warrant constructing a pipeline. The disturbance and impacts of constructing a pipeline that distance will exponentially outweigh the impacts of controlling and combusting the de minimis amount of potential natural gas on location. The de minimis amount of potential gas would not have the pressure capability to contribute the gas into the pipeline.</p> <p>If gas is found during production, it will be utilized on the existing Richfield-Wirick-Federal location for beneficial uses such as powering onsite equipment.</p>
<p>903. e.(1).B.iv: Production Test Plans</p>	<p>Magpie Operating, Inc does not currently anticipate conducting a Production Evaluation or Productivity Test. The well is located in the established Sage Creek North field.</p>
<p>903. e.(1).B.v: Safety Risks</p>	<p>Magpie Operating, Inc does not currently anticipate any safety risks that will require Magpie Operating, Inc to allow gas to escape rather than being captured or combusted during drilling. The formations encountered in the area do not contain gas in measurable quantities and are not capable of flowing to surface.</p>
<p>903. e.(1).B.vi: Operational BMPs</p>	<p>Magpie Operating, Inc intends to use the following list of operational best practices to minimize Venting during active and planned maintenance allowed pursuant to Rule 903.d.(1).B:</p> <p>During maintenance activities, COMPANY will have appropriate gas control equipment on location to minimize all Venting.</p>
<p>903. e.(1).B.vii: Procedures to reduce well liquids unloading events</p>	<p>Magpie Operating, Inc does not currently anticipate any Well Liquids Unloading events being required. The well will have artificial lift pumping equipment installed and will never be unloaded directly to a tank.</p>
<p>903. e.(1).B.viii: Anticipated volumes of liquids and gas production</p>	<p>Magpie Operating, Inc anticipates no gas production. A heater-treater will be installed at the existing Richfield-Wirick-Federal location, and will be sized to optimize gas capture, if any gas is produced at all.</p> <p>This well averages 300 bbls of oil per month, 500 mcf of natural gas per month, and 0 bbls of produced water per month.</p>



Magpie Operating, Inc.
 Nearest Gas Gathering Line Map
 Richfield-Wirick-Federal #1
 API # 05-107-05048
 SESE Section 14 T5N R88W

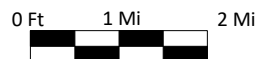
Legend



Gas Pipeline



Well



Prepared By:
 Ardor Environmental LLC

January 10, 2022