

Inspection Photos

5/10/2022

Operator: BLACK HILLS PLATEAU
PRODUCTION LLC - 10150 / LARAMIE ENERGY
LLC - 10433

Location ID: 312420
Mesa County, CO

Aaron Trujillo
NW Reclamation Specialist
COGCC

Inspection Photos

Operator Name: BLACK HILLS PLATEAU PRODUCTION LLC - 10150 / LARAMIE ENERGY LLC - 10433

8-27-1960



9-2-1980



Photo 1: Records show well was completed 4/30/1979. Photo left 1960 USGS aerial image showing area of the Location (star) prior to O&G disturbance. Photo right, dated 1980, shows location and access road post construction and drilling.

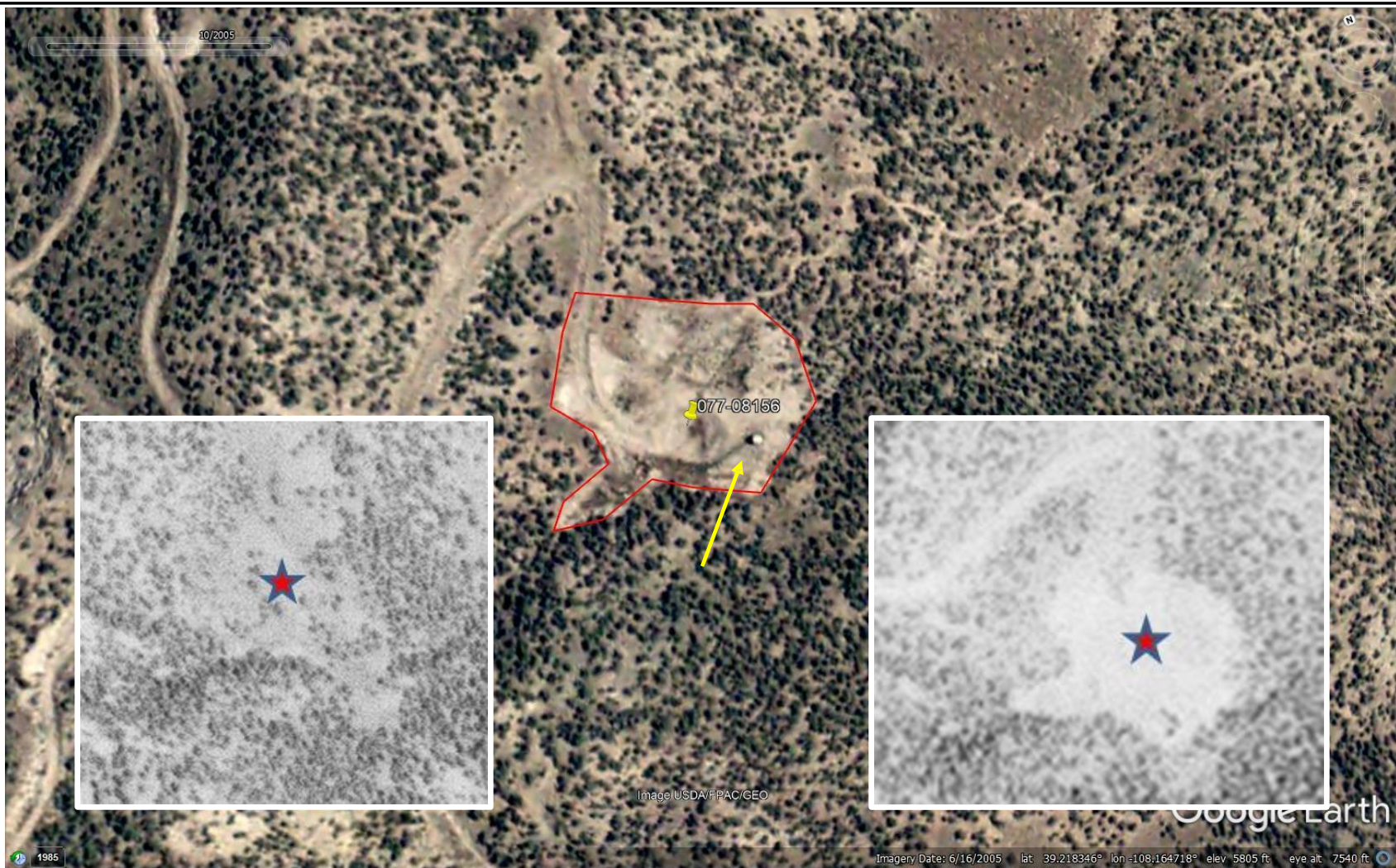


Photo 2: 2005 google earth aerial image of the Location with inserts from page 1 showing area pre-disturbance (bottom left), and area post disturbance (bottom right). Image shows location's disturbance area (red polygon), as well as equipment such as a tank (arrow). Location remains relatively unchanged.



Photo 3: 2019 COGIS Aerial imagery. Photo shows location remains relatively unchanged since plugging and abandonment.

Inspection Photos

Operator Name: BLACK HILLS PLATEAU PRODUCTION LLC - 10150 / LARAMIE ENERGY LLC - 10433

Location ID: 312420



Photo 4: Photos taken from the west end of the Location, facing east and southeast. Photo provides overview of the Location. Photo shows Location has not been recontoured, regraded and reclaimed in accordance with COGCC 1004 requirements. Arrow shows approximate location of tank battery evident in photo 2.

Inspection Photos

Operator Name: BLACK HILLS PLATEAU PRODUCTION LLC - 10150 / LARAMIE ENERGY LLC - 10433

Location ID: 312420



Photo 5: Photos 5-6 taken from the west end of the Location. Photos provide an overview of the Location from north, northeast, east to southeast. Photo shows Location and access road has not been recontoured, regraded and reclaimed in accordance with COGCC 1004 requirements. Arrow shows approximate location of tank battery evident in photo 2.

Inspection Photos

Operator Name: BLACK HILLS PLATEAU PRODUCTION LLC - 10150 / LARAMIE ENERGY LLC - 10433

Location ID: 312420



May 10, 2022
39.21836218N 108.16509526W



May 10, 2022
39.21836218N 108.16509526W

Photo 6: See comments under photo 5. Arrow shows approximate location of tank battery evident in photo 2.

Inspection Photos

Operator Name: BLACK HILLS PLATEAU PRODUCTION LLC - 10150 / LARAMIE ENERGY LLC - 10433

Location ID: 312420



Photo 7: Photos 5-6 taken from the northeast end of the Location. Photos provide an overview of the Location from southwest and northwest. Photo shows Location and access road has not been recontoured, regraded and reclaimed in accordance with COGCC 1004 requirements. Arrow shows approximate location of tank battery evident in photo 2.

Inspection Photos

Operator Name: BLACK HILLS PLATEAU PRODUCTION LLC - 10150 / LARAMIE ENERGY LLC - 10433

Location ID: 312420



Photo 8: Photos provide examples of the remaining fill slopes on the east end of the Location. Location has not been recontoured, regraded and reclaimed in accordance with COGCC 1004 requirements.

Inspection Photos

Operator Name: BLACK HILLS PLATEAU PRODUCTION LLC - 10150 / LARAMIE ENERGY LLC - 10433

Location ID: 312420



Photo 9: Photos examples showing access road has not been recontoured, regraded and reclaimed; gravel/road base remains evident.

Inspection Photos

Operator Name: BLACK HILLS PLATEAU PRODUCTION LLC - 10150 / LARAMIE ENERGY LLC - 10433

Location ID: 312420



Photo 10: Photo shows welded plate representing the well marker left at the surface. Rules at time of plugging required permanent monuments marking well at surface was required to be a piece of pipe not less than 4 inches in diameter and not less than 10 feet in length, of which 4 feet shall be above the general ground level; monument left at surface does not comport with abandoned well marker requirements.