

NOBLE ENERGY, INC



| | | | |
|-----------|---------------------------------|-----------|--|
| Location: | COLORADO | Slot: | SLOT#19 GIG-EM STATE Y9-730 (595°FNL&975°FEL,SEC.16) |
| Field: | WELD COUNTY (NOBLE NAD 83 GRID) | Well: | GIG-EM STATE Y9-730 |
| Facility: | SEC.16-T02N-R64W | Wellbore: | GIG-EM STATE Y9-730 PWB |

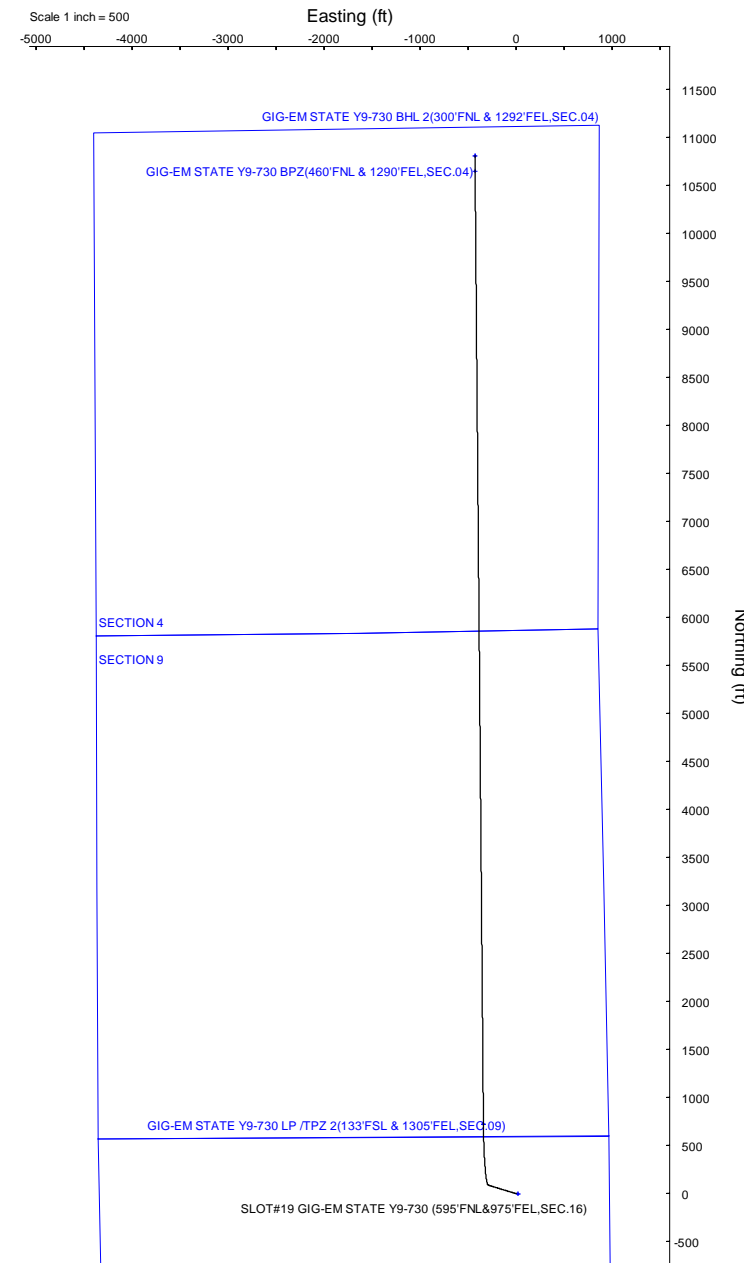
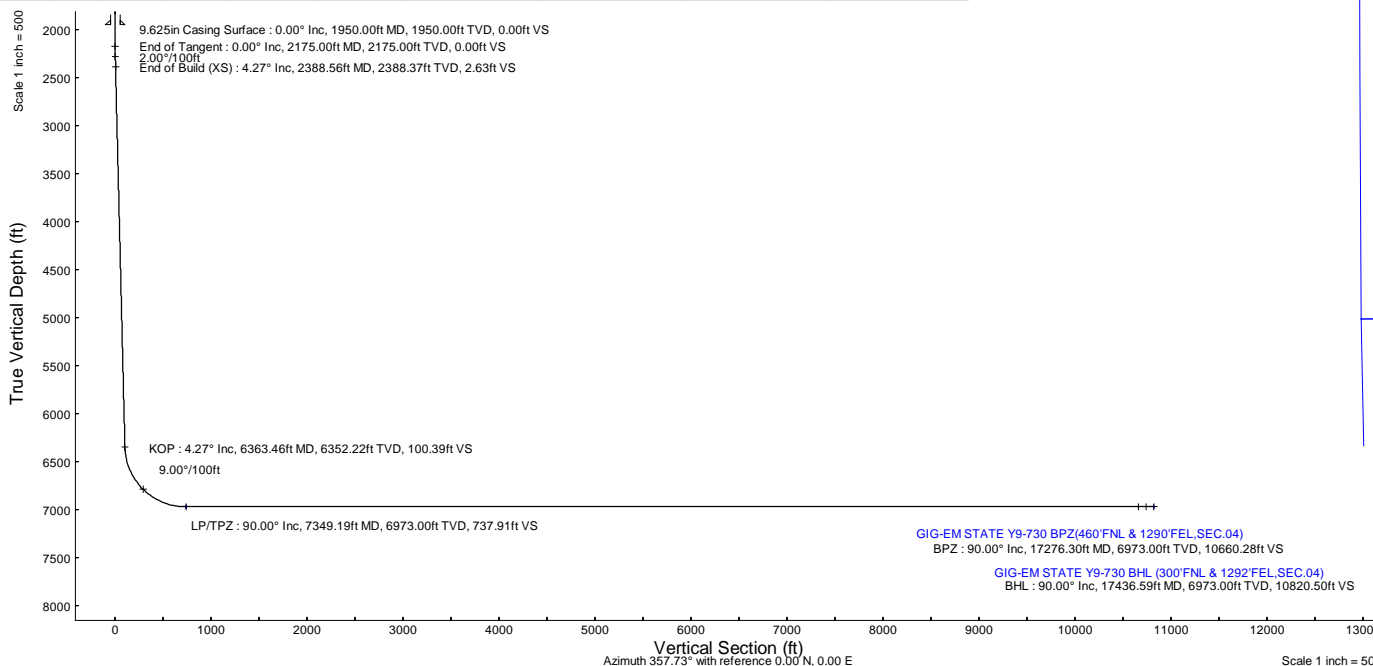
| | | |
|--|--|--|
| Plot reference wellpath is GIG-EM STATE Y9-730 (REV-B.0) PWP | | Grid System: NAD83 / Lambert Colorado SP, Northern Zone (501), US feet |
| True vertical depths are referenced to Rig(30°KB) (RKB) | | North Reference: Grid north |
| Reference wellpath measured depths are referenced to Rig(30°KB) (RKB) | | Scale: True distance |
| Rig(30°KB) (RKB) to Mean Sea Level: 4973 feet | | Coordinates are in feet referenced to Slot |
| Mean Sea Level to Ground level (At Slot: SLOT#19 GIG-EM STATE Y9-730 (595°FNL&975°FEL,SEC.16)): 0 feet | | Depths are in feet |
| Offset wellpath MDs are referenced to each path's default MD datum | | Created by: guanater on 2022-05-03; Database: WA_Denver |

| Location Information | | | | | |
|--|--|--|-------------------|--------------------|-----------------|
| Facility Name | | | Grid East (US ft) | Grid North (US ft) | Latitude |
| SEC.16-T02N-R64W | | | 3261942.561 | 1296894.275 | 40°08'40.4520"N |
| Slot | | | Grid East (US ft) | Grid North (US ft) | Latitude |
| SLOT#19 GIG-EM STATE Y9-730 (595°FNL&975°FEL,SEC.16) | | | 3265447.040 | 1296763.977 | 40°08'38.7960"N |
| Rig(30°KB) (RKB) to Ground level (At Slot: SLOT#19 GIG-EM STATE Y9-730 (595°FNL&975°FEL,SEC.16)) | | | 4973ft | | |
| Mean Sea Level to Ground level (At Slot: SLOT#19 GIG-EM STATE Y9-730 (595°FNL&975°FEL,SEC.16)) | | | 0ft | | |
| Rig(30°KB) (RKB) to Mean Sea Level | | | 4973ft | | |

| Well Profile Data | | | | | | | | |
|-------------------|----------|---------|---------|----------|--------------|--------------|---------------|----------|
| Design Comment | MD (ft) | Inc (°) | Az (°) | TVD (ft) | Local N (ft) | Local E (ft) | DLS (°/100ft) | VS (ft) |
| SHL | 30.00 | 0.000 | 287.012 | 30.00 | 0.00 | 0.00 | 0.00 | 0.00 |
| End of Tangent | 2175.00 | 0.000 | 287.012 | 2175.00 | 0.00 | 0.00 | 0.00 | 0.00 |
| End of Build (XS) | 2388.56 | 4.271 | 287.012 | 2388.37 | 2.33 | -7.61 | 2.00 | 2.63 |
| KOP | 6363.46 | 4.271 | 287.012 | 6352.22 | 88.94 | -290.70 | 0.00 | 100.39 |
| LP/TPZ | 7349.19 | 90.000 | 359.500 | 6973.00 | 724.99 | -340.47 | 9.00 | 737.91 |
| BPZ | 17276.30 | 90.000 | 359.500 | 6973.00 | 10651.72 | -427.07 | 0.00 | 10660.28 |
| BHL | 17436.59 | 90.000 | 359.274 | 6973.00 | 10812.00 | -428.78 | 0.14 | 10820.50 |

| Targets | | | | | | | | |
|--|----------|----------|--------------|--------------|-------------------|--------------------|-----------------|------------------|
| Name | MD (ft) | TVD (ft) | Local N (ft) | Local E (ft) | Grid East (US ft) | Grid North (US ft) | Latitude | Longitude |
| Rubicon State Y16-718 SECTION 4 | N/A | -3.00 | -1.65 | 21.98 | 3265469.02 | 1296762.33 | 40°08'38.7774"N | 104°33'1.4092"W |
| Rubicon State Y16-718 SECTION 9 | N/A | -3.00 | -1.65 | 21.98 | 3265469.02 | 1296762.33 | 40°08'38.7774"N | 104°33'1.4092"W |
| HULLABALOO Y21-787 SECTION 16 | N/A | 60.00 | 130.30 | -3504.63 | 3261942.56 | 1296894.28 | 40°08'40.4520"N | 104°33'46.8000"W |
| GIG-EM STATE Y9-730 BHL (300°FNL & 1292°FEL,SEC.04) | N/A | 6973.00 | 10811.20 | -427.85 | 3265019.21 | 1307574.70 | 40°10'25.6720"W | 104°33'5.7121"W |
| GIG-EM STATE Y9-730 BHL 2(300°FNL & 1292°FEL,SEC.04) | 17436.59 | 6973.00 | 10812.00 | -428.78 | 3265018.28 | 1307575.51 | 40°10'25.6800"N | 104°33'5.7240"W |
| GIG-EM STATE Y9-730 BPZ(460°FNL & 1290°FEL,SEC.04) | 17276.30 | 6973.00 | 10651.72 | -427.07 | 3265019.99 | 1307415.23 | 40°10'24.0960"N | 104°33'5.7240"W |
| GIG-EM STATE Y9-730 LP /TPZ (133°FSL & 1305°FEL,SEC.09) | N/A | 6973.00 | 724.37 | -340.16 | 3265106.89 | 1297488.31 | 40°08'45.9898"N | 104°33'5.9722"W |
| GIG-EM STATE Y9-730 LP /TPZ 2(133°FSL & 1305°FEL,SEC.09) | 7349.19 | 6973.00 | 724.99 | -340.47 | 3265106.59 | 1297488.94 | 40°08'45.9960"N | 104°33'5.9760"W |

| Bottom Hole Location | | | | | | | | |
|----------------------|---------|---------|----------|--------------|--------------|-------------------|--------------------|-----------------|
| MD (ft) | Inc (°) | Az (°) | TVD (ft) | Local N (ft) | Local E (ft) | Grid East (US ft) | Grid North (US ft) | Latitude |
| 17436.59 | 90.000 | 359.274 | 6973.00 | 10812.00 | -428.78 | 3265018.28 | 1307575.51 | 40°10'25.6800"N |



GIG-EM STATE Y9-730 BPZ(460°FNL & 1290°FEL,SEC.04)
BPZ : 90.00° Inc, 17276.30ft MD, 6973.00ft TVD, 10660.28ft VS

GIG-EM STATE Y9-730 BHL (300°FNL & 1292°FEL,SEC.04)
BHL : 90.00° Inc, 17436.59ft MD, 6973.00ft TVD, 10820.50ft VS



Planned Wellpath Report

GIG-EM STATE Y9-730 (REV-B.0) PWP

Page 1 of 8



| REFERENCE WELLPATH IDENTIFICATION | | | |
|-----------------------------------|--|-----------|-------------------------|
| Operator | NOBLE ENERGY, INC | Well | GIG-EM STATE Y9-730 |
| Field | WELD COUNTY (NOBLE NAD 83 GRID) | API/Legal | |
| Facility | SEC.16-T02N-R64W | Wellbore | GIG-EM STATE Y9-730 PWB |
| Slot | SLOT#19 GIG-EM STATE Y9-730 (595'FNL&975'FEL,SEC.16) | | |

| REPORT SETUP INFORMATION | | | |
|--------------------------|---|------------------|------------------------|
| Projection System | NAD83 / Lambert Colorado SP, Northern Zone (501), US feet | Software System | WellArchitect® 6.0 |
| North Reference | Grid | User | Guenaler |
| Scale | 0.999959 | Report Generated | 5/3/2022 at 2:26:46 PM |
| Convergence at slot | 0.61° East | Database | WA_Denver |

| WELLPATH LOCATION | | | | | | |
|-----------------------|-------------------|----------|------------------|-----------------|------------------------|------------------|
| | Local coordinates | | Grid coordinates | | Geographic coordinates | |
| | North[ft] | East[ft] | Easting[US ft] | Northing[US ft] | Latitude | Longitude |
| Slot Location | -130.30 | 3504.63 | 3265447.04 | 1296763.98 | 40°08'38.7960"N | 104°33'1.6920"W |
| Facility Reference Pt | | | 3261942.56 | 1296894.28 | 40°08'40.4520"N | 104°33'46.8000"W |
| Field Reference Pt | | | 3000000.00 | 4454105.15 | 48°46'34.3150"N | 105°30'0.0000"W |

| WELLPATH DATUM | | | |
|--------------------------|-------------------|---|-------------------|
| Calculation method | Minimum curvature | Rig(30'KB) (RKB) to Facility Vertical Datum | 4973.00ft |
| Horizontal Reference Pt | Slot | Rig(30'KB) (RKB) to Mean Sea Level | 4973.00ft |
| Vertical Reference Pt | Rig(30'KB) (RKB) | Rig(30'KB) (RKB) to Ground Level at Slot (SLOT#19 GIG-EM STATE Y9-730 (595'FNL&975'FEL,SEC.16)) | 4973.00ft |
| MD Reference Pt | Rig(30'KB) (RKB) | Section Origin | N 0.00, E 0.00 ft |
| Field Vertical Reference | Mean Sea Level | Section Azimuth | 357.73° |



Planned Wellpath Report

GIG-EM STATE Y9-730 (REV-B.0) PWP

Page 2 of 8



| REFERENCE WELLPATH IDENTIFICATION | | | |
|-----------------------------------|--|-----------|-------------------------|
| Operator | NOBLE ENERGY, INC | Well | GIG-EM STATE Y9-730 |
| Field | WELD COUNTY (NOBLE NAD 83 GRID) | API/Legal | |
| Facility | SEC.16-T02N-R64W | Wellbore | GIG-EM STATE Y9-730 PWB |
| Slot | SLOT#19 GIG-EM STATE Y9-730 (595'FNL&975'FEL,SEC.16) | | |

| WELLPATH DATA (182 stations) † = interpolated, ‡ = extrapolated station | | | | | | | | | | |
|---|--------------------|----------------|-------------|-------------------|---------------|--------------|-----------------|-----------------|------------------|-------------------|
| MD [ft] | Inclination [°] | Azimuth [°] | TVD [ft] | Vert Sect [ft] | North [ft] | East [ft] | Latitude | Longitude | DLS [°/100ft] | Comments |
| 0.00† | 0.000 | 287.012 | 0.00 | 0.00 | 0.00 | 0.00 | 40°08'38.7960"N | 104°33'1.6920"W | 0.00 | |
| 30.00 | 0.000 | 287.012 | 30.00 | 0.00 | 0.00 | 0.00 | 40°08'38.7960"N | 104°33'1.6920"W | 0.00 | SHL |
| 130.00† | 0.000 | 287.012 | 130.00 | 0.00 | 0.00 | 0.00 | 40°08'38.7960"N | 104°33'1.6920"W | 0.00 | |
| 230.00† | 0.000 | 287.012 | 230.00 | 0.00 | 0.00 | 0.00 | 40°08'38.7960"N | 104°33'1.6920"W | 0.00 | |
| 330.00† | 0.000 | 287.012 | 330.00 | 0.00 | 0.00 | 0.00 | 40°08'38.7960"N | 104°33'1.6920"W | 0.00 | |
| 430.00† | 0.000 | 287.012 | 430.00 | 0.00 | 0.00 | 0.00 | 40°08'38.7960"N | 104°33'1.6920"W | 0.00 | |
| 530.00† | 0.000 | 287.012 | 530.00 | 0.00 | 0.00 | 0.00 | 40°08'38.7960"N | 104°33'1.6920"W | 0.00 | |
| 630.00† | 0.000 | 287.012 | 630.00 | 0.00 | 0.00 | 0.00 | 40°08'38.7960"N | 104°33'1.6920"W | 0.00 | |
| 730.00† | 0.000 | 287.012 | 730.00 | 0.00 | 0.00 | 0.00 | 40°08'38.7960"N | 104°33'1.6920"W | 0.00 | |
| 830.00† | 0.000 | 287.012 | 830.00 | 0.00 | 0.00 | 0.00 | 40°08'38.7960"N | 104°33'1.6920"W | 0.00 | |
| 930.00† | 0.000 | 287.012 | 930.00 | 0.00 | 0.00 | 0.00 | 40°08'38.7960"N | 104°33'1.6920"W | 0.00 | |
| 1030.00† | 0.000 | 287.012 | 1030.00 | 0.00 | 0.00 | 0.00 | 40°08'38.7960"N | 104°33'1.6920"W | 0.00 | |
| 1130.00† | 0.000 | 287.012 | 1130.00 | 0.00 | 0.00 | 0.00 | 40°08'38.7960"N | 104°33'1.6920"W | 0.00 | |
| 1230.00† | 0.000 | 287.012 | 1230.00 | 0.00 | 0.00 | 0.00 | 40°08'38.7960"N | 104°33'1.6920"W | 0.00 | |
| 1330.00† | 0.000 | 287.012 | 1330.00 | 0.00 | 0.00 | 0.00 | 40°08'38.7960"N | 104°33'1.6920"W | 0.00 | |
| 1430.00† | 0.000 | 287.012 | 1430.00 | 0.00 | 0.00 | 0.00 | 40°08'38.7960"N | 104°33'1.6920"W | 0.00 | |
| 1530.00† | 0.000 | 287.012 | 1530.00 | 0.00 | 0.00 | 0.00 | 40°08'38.7960"N | 104°33'1.6920"W | 0.00 | |
| 1630.00† | 0.000 | 287.012 | 1630.00 | 0.00 | 0.00 | 0.00 | 40°08'38.7960"N | 104°33'1.6920"W | 0.00 | |
| 1730.00† | 0.000 | 287.012 | 1730.00 | 0.00 | 0.00 | 0.00 | 40°08'38.7960"N | 104°33'1.6920"W | 0.00 | |
| 1830.00† | 0.000 | 287.012 | 1830.00 | 0.00 | 0.00 | 0.00 | 40°08'38.7960"N | 104°33'1.6920"W | 0.00 | |
| 1930.00† | 0.000 | 287.012 | 1930.00 | 0.00 | 0.00 | 0.00 | 40°08'38.7960"N | 104°33'1.6920"W | 0.00 | |
| 2030.00† | 0.000 | 287.012 | 2030.00 | 0.00 | 0.00 | 0.00 | 40°08'38.7960"N | 104°33'1.6920"W | 0.00 | |
| 2130.00† | 0.000 | 287.012 | 2130.00 | 0.00 | 0.00 | 0.00 | 40°08'38.7960"N | 104°33'1.6920"W | 0.00 | |
| 2175.00 | 0.000 | 287.012 | 2175.00 | 0.00 | 0.00 | 0.00 | 40°08'38.7960"N | 104°33'1.6920"W | 0.00 | End of Tangent |
| 2230.00† | 1.100 | 287.012 | 2230.00 | 0.17 | 0.15 | -0.50 | 40°08'38.7976"N | 104°33'1.6985"W | 2.00 | |
| 2330.00† | 3.100 | 287.012 | 2329.92 | 1.38 | 1.23 | -4.01 | 40°08'38.8085"N | 104°33'1.7434"W | 2.00 | |
| 2388.56 | 4.271 | 287.012 | 2388.37 | 2.63 | 2.33 | -7.61 | 40°08'38.8198"N | 104°33'1.7896"W | 2.00 | End of Build (XS) |
| 2430.00† | 4.271 | 287.012 | 2429.69 | 3.65 | 3.23 | -10.56 | 40°08'38.8290"N | 104°33'1.8275"W | 0.00 | |
| 2530.00† | 4.271 | 287.012 | 2529.41 | 6.11 | 5.41 | -17.68 | 40°08'38.8513"N | 104°33'1.9189"W | 0.00 | |
| 2630.00† | 4.271 | 287.012 | 2629.13 | 8.57 | 7.59 | -24.80 | 40°08'38.8736"N | 104°33'2.0103"W | 0.00 | |
| 2730.00† | 4.271 | 287.012 | 2728.85 | 11.03 | 9.77 | -31.93 | 40°08'38.8959"N | 104°33'2.1017"W | 0.00 | |
| 2830.00† | 4.271 | 287.012 | 2828.58 | 13.48 | 11.95 | -39.05 | 40°08'38.9182"N | 104°33'2.1931"W | 0.00 | |
| 2930.00† | 4.271 | 287.012 | 2928.30 | 15.94 | 14.13 | -46.17 | 40°08'38.9405"N | 104°33'2.2845"W | 0.00 | |
| 3030.00† | 4.271 | 287.012 | 3028.02 | 18.40 | 16.30 | -53.29 | 40°08'38.9628"N | 104°33'2.3759"W | 0.00 | |
| 3130.00† | 4.271 | 287.012 | 3127.74 | 20.86 | 18.48 | -60.41 | 40°08'38.9850"N | 104°33'2.4673"W | 0.00 | |
| 3230.00† | 4.271 | 287.012 | 3227.47 | 23.32 | 20.66 | -67.54 | 40°08'39.0073"N | 104°33'2.5587"W | 0.00 | |
| 3330.00† | 4.271 | 287.012 | 3327.19 | 25.78 | 22.84 | -74.66 | 40°08'39.0296"N | 104°33'2.6501"W | 0.00 | |
| 3430.00† | 4.271 | 287.012 | 3426.91 | 28.24 | 25.02 | -81.78 | 40°08'39.0519"N | 104°33'2.7415"W | 0.00 | |
| 3530.00† | 4.271 | 287.012 | 3526.63 | 30.70 | 27.20 | -88.90 | 40°08'39.0742"N | 104°33'2.8329"W | 0.00 | |
| 3630.00† | 4.271 | 287.012 | 3626.35 | 33.16 | 29.38 | -96.02 | 40°08'39.0965"N | 104°33'2.9243"W | 0.00 | |
| 3730.00† | 4.271 | 287.012 | 3726.08 | 35.62 | 31.56 | -103.15 | 40°08'39.1187"N | 104°33'3.0158"W | 0.00 | |
| 3830.00† | 4.271 | 287.012 | 3825.80 | 38.08 | 33.74 | -110.27 | 40°08'39.1410"N | 104°33'3.1072"W | 0.00 | |
| 3930.00† | 4.271 | 287.012 | 3925.52 | 40.54 | 35.92 | -117.39 | 40°08'39.1633"N | 104°33'3.1986"W | 0.00 | |
| 4030.00† | 4.271 | 287.012 | 4025.24 | 43.00 | 38.09 | -124.51 | 40°08'39.1856"N | 104°33'3.2900"W | 0.00 | |
| 4130.00† | 4.271 | 287.012 | 4124.97 | 45.46 | 40.27 | -131.63 | 40°08'39.2079"N | 104°33'3.3814"W | 0.00 | |



Planned Wellpath Report
GIG-EM STATE Y9-730 (REV-B.0) PWP
Page 3 of 8



| REFERENCE WELLPATH IDENTIFICATION | | | |
|-----------------------------------|--|-----------|-------------------------|
| Operator | NOBLE ENERGY, INC | Well | GIG-EM STATE Y9-730 |
| Field | WELD COUNTY (NOBLE NAD 83 GRID) | API/Legal | |
| Facility | SEC.16-T02N-R64W | Wellbore | GIG-EM STATE Y9-730 PWB |
| Slot | SLOT#19 GIG-EM STATE Y9-730 (595'FNL&975'FEL,SEC.16) | | |

| WELLPATH DATA (182 stations) † = interpolated, ‡ = extrapolated station | | | | | | | | | | |
|---|-----------------|-------------|----------------------|----------------|------------|-----------|-----------------|-----------------|---------------|----------|
| MD [ft] | Inclination [°] | Azimuth [°] | TVD [ft] | Vert Sect [ft] | North [ft] | East [ft] | Latitude | Longitude | DLS [°/100ft] | Comments |
| 4230.00† | 4.271 | 287.012 | 4224.69 | 47.92 | 42.45 | -138.76 | 40°08'39.2302"N | 104°33'3.4728"W | 0.00 | |
| 4330.00† | 4.271 | 287.012 | 4324.41 | 50.38 | 44.63 | -145.88 | 40°08'39.2525"N | 104°33'3.5642"W | 0.00 | |
| 4430.00† | 4.271 | 287.012 | 4424.13 | 52.84 | 46.81 | -153.00 | 40°08'39.2747"N | 104°33'3.6556"W | 0.00 | |
| 4530.00† | 4.271 | 287.012 | 4523.85 | 55.30 | 48.99 | -160.12 | 40°08'39.2970"N | 104°33'3.7470"W | 0.00 | |
| 4630.00† | 4.271 | 287.012 | 4623.58 | 57.76 | 51.17 | -167.24 | 40°08'39.3193"N | 104°33'3.8384"W | 0.00 | |
| 4730.00† | 4.271 | 287.012 | 4723.30 | 60.22 | 53.35 | -174.37 | 40°08'39.3416"N | 104°33'3.9298"W | 0.00 | |
| 4830.00† | 4.271 | 287.012 | 4823.02 | 62.67 | 55.53 | -181.49 | 40°08'39.3639"N | 104°33'4.0212"W | 0.00 | |
| 4930.00† | 4.271 | 287.012 | 4922.74 | 65.13 | 57.71 | -188.61 | 40°08'39.3862"N | 104°33'4.1126"W | 0.00 | |
| 5030.00† | 4.271 | 287.012 | 5022.47 | 67.59 | 59.88 | -195.73 | 40°08'39.4085"N | 104°33'4.2040"W | 0.00 | |
| 5130.00† | 4.271 | 287.012 | 5122.19 | 70.05 | 62.06 | -202.85 | 40°08'39.4307"N | 104°33'4.2954"W | 0.00 | |
| 5230.00† | 4.271 | 287.012 | 5221.91 | 72.51 | 64.24 | -209.98 | 40°08'39.4530"N | 104°33'4.3868"W | 0.00 | |
| 5330.00† | 4.271 | 287.012 | 5321.63 | 74.97 | 66.42 | -217.10 | 40°08'39.4753"N | 104°33'4.4782"W | 0.00 | |
| 5430.00† | 4.271 | 287.012 | 5421.35 | 77.43 | 68.60 | -224.22 | 40°08'39.4976"N | 104°33'4.5696"W | 0.00 | |
| 5530.00† | 4.271 | 287.012 | 5521.08 | 79.89 | 70.78 | -231.34 | 40°08'39.5199"N | 104°33'4.6610"W | 0.00 | |
| 5630.00† | 4.271 | 287.012 | 5620.80 | 82.35 | 72.96 | -238.46 | 40°08'39.5422"N | 104°33'4.7524"W | 0.00 | |
| 5730.00† | 4.271 | 287.012 | 5720.52 | 84.81 | 75.14 | -245.59 | 40°08'39.5644"N | 104°33'4.8438"W | 0.00 | |
| 5830.00† | 4.271 | 287.012 | 5820.24 | 87.27 | 77.32 | -252.71 | 40°08'39.5867"N | 104°33'4.9352"W | 0.00 | |
| 5930.00† | 4.271 | 287.012 | 5919.97 | 89.73 | 79.50 | -259.83 | 40°08'39.6090"N | 104°33'5.0266"W | 0.00 | |
| 6030.00† | 4.271 | 287.012 | 6019.69 | 92.19 | 81.67 | -266.95 | 40°08'39.6313"N | 104°33'5.1180"W | 0.00 | |
| 6130.00† | 4.271 | 287.012 | 6119.41 | 94.65 | 83.85 | -274.07 | 40°08'39.6536"N | 104°33'5.2094"W | 0.00 | |
| 6230.00† | 4.271 | 287.012 | 6219.13 | 97.11 | 86.03 | -281.19 | 40°08'39.6759"N | 104°33'5.3008"W | 0.00 | |
| 6330.00† | 4.271 | 287.012 | 6318.86 | 99.57 | 88.21 | -288.32 | 40°08'39.6982"N | 104°33'5.3922"W | 0.00 | |
| 6363.46 | 4.271 | 287.012 | 6352.22 | 100.39 | 88.94 | -290.70 | 40°08'39.7056"N | 104°33'5.4228"W | 0.00 | KOP |
| 6430.00† | 8.331 | 330.397 | 6418.38 | 105.50 | 93.86 | -295.46 | 40°08'39.7547"N | 104°33'5.4834"W | 9.00 | |
| 6530.00† | 16.762 | 345.821 | 6515.93 | 126.08 | 114.18 | -302.58 | 40°08'39.9563"N | 104°33'5.5723"W | 9.00 | |
| 6630.00† | 25.578 | 350.942 | 6609.10 | 161.70 | 149.55 | -309.53 | 40°08'40.3065"N | 104°33'5.6569"W | 9.00 | |
| 6730.00† | 34.485 | 353.548 | 6695.59 | 211.47 | 199.10 | -316.12 | 40°08'40.7969"N | 104°33'5.7349"W | 9.00 | |
| 6830.00† | 43.427 | 355.185 | 6773.27 | 274.17 | 261.61 | -322.20 | 40°08'41.4152"N | 104°33'5.8046"W | 9.00 | |
| 6930.00† | 52.385 | 356.354 | 6840.24 | 348.26 | 335.54 | -327.61 | 40°08'42.1463"N | 104°33'5.8641"W | 9.00 | |
| 7030.00† | 61.352 | 357.270 | 6894.84 | 431.90 | 419.07 | -332.23 | 40°08'42.9721"N | 104°33'5.9121"W | 9.00 | |
| 7130.00† | 70.325 | 358.041 | 6935.73 | 523.05 | 510.14 | -335.94 | 40°08'43.8725"N | 104°33'5.9473"W | 9.00 | |
| 7230.00† | 79.300 | 358.729 | 6961.90 | 619.45 | 606.51 | -338.64 | 40°08'44.8250"N | 104°33'5.9688"W | 9.00 | |
| 7330.00† | 88.277 | 359.377 | 6972.71 | 718.73 | 705.80 | -340.28 | 40°08'45.8064"N | 104°33'5.9762"W | 9.00 | |
| 7349.19 | 90.000 | 359.500 | 6973.00 [†] | 737.91 | 724.99 | -340.47 | 40°08'45.9960"N | 104°33'5.9760"W | 9.00 | LP/TPZ |
| 7430.00† | 90.000 | 359.500 | 6973.00 | 818.68 | 805.80 | -341.17 | 40°08'46.7946"N | 104°33'5.9739"W | 0.00 | |
| 7530.00† | 90.000 | 359.500 | 6973.00 | 918.64 | 905.79 | -342.04 | 40°08'47.7828"N | 104°33'5.9714"W | 0.00 | |
| 7630.00† | 90.000 | 359.500 | 6973.00 | 1018.59 | 1005.79 | -342.92 | 40°08'48.7710"N | 104°33'5.9689"W | 0.00 | |
| 7730.00† | 90.000 | 359.500 | 6973.00 | 1118.54 | 1105.79 | -343.79 | 40°08'49.7592"N | 104°33'5.9663"W | 0.00 | |
| 7830.00† | 90.000 | 359.500 | 6973.00 | 1218.49 | 1205.78 | -344.66 | 40°08'50.7474"N | 104°33'5.9638"W | 0.00 | |
| 7930.00† | 90.000 | 359.500 | 6973.00 | 1318.45 | 1305.78 | -345.53 | 40°08'51.7356"N | 104°33'5.9613"W | 0.00 | |
| 8030.00† | 90.000 | 359.500 | 6973.00 | 1418.40 | 1405.78 | -346.40 | 40°08'52.7238"N | 104°33'5.9587"W | 0.00 | |
| 8130.00† | 90.000 | 359.500 | 6973.00 | 1518.35 | 1505.77 | -347.28 | 40°08'53.7120"N | 104°33'5.9562"W | 0.00 | |
| 8230.00† | 90.000 | 359.500 | 6973.00 | 1618.30 | 1605.77 | -348.15 | 40°08'54.7002"N | 104°33'5.9536"W | 0.00 | |
| 8330.00† | 90.000 | 359.500 | 6973.00 | 1718.25 | 1705.76 | -349.02 | 40°08'55.6884"N | 104°33'5.9511"W | 0.00 | |
| 8430.00† | 90.000 | 359.500 | 6973.00 | 1818.21 | 1805.76 | -349.89 | 40°08'56.6766"N | 104°33'5.9486"W | 0.00 | |



Planned Wellpath Report
GIG-EM STATE Y9-730 (REV-B.0) PWP
Page 4 of 8



| REFERENCE WELLPATH IDENTIFICATION | | | |
|-----------------------------------|--|-----------|-------------------------|
| Operator | NOBLE ENERGY, INC | Well | GIG-EM STATE Y9-730 |
| Field | WELD COUNTY (NOBLE NAD 83 GRID) | API/Legal | |
| Facility | SEC.16-T02N-R64W | Wellbore | GIG-EM STATE Y9-730 PWB |
| Slot | SLOT#19 GIG-EM STATE Y9-730 (595'FNL&975'FEL,SEC.16) | | |

| WELLPATH DATA (182 stations) † = interpolated, ‡ = extrapolated station | | | | | | | | | | |
|---|--------------------|----------------|-------------|-------------------|---------------|--------------|-----------------|-----------------|------------------|----------|
| MD [ft] | Inclination [°] | Azimuth [°] | TVD [ft] | Vert Sect [ft] | North [ft] | East [ft] | Latitude | Longitude | DLS [°/100ft] | Comments |
| 8530.00† | 90.000 | 359.500 | 6973.00 | 1918.16 | 1905.76 | -350.77 | 40°08'57.6648"N | 104°33'5.9460"W | 0.00 | |
| 8630.00† | 90.000 | 359.500 | 6973.00 | 2018.11 | 2005.75 | -351.64 | 40°08'58.6530"N | 104°33'5.9435"W | 0.00 | |
| 8730.00† | 90.000 | 359.500 | 6973.00 | 2118.06 | 2105.75 | -352.51 | 40°08'59.6412"N | 104°33'5.9410"W | 0.00 | |
| 8830.00† | 90.000 | 359.500 | 6973.00 | 2218.02 | 2205.74 | -353.38 | 40°09'0.6294"N | 104°33'5.9384"W | 0.00 | |
| 8930.00† | 90.000 | 359.500 | 6973.00 | 2317.97 | 2305.74 | -354.26 | 40°09'1.6177"N | 104°33'5.9359"W | 0.00 | |
| 9030.00† | 90.000 | 359.500 | 6973.00 | 2417.92 | 2405.74 | -355.13 | 40°09'2.6059"N | 104°33'5.9333"W | 0.00 | |
| 9130.00† | 90.000 | 359.500 | 6973.00 | 2517.87 | 2505.73 | -356.00 | 40°09'3.5941"N | 104°33'5.9308"W | 0.00 | |
| 9230.00† | 90.000 | 359.500 | 6973.00 | 2617.82 | 2605.73 | -356.87 | 40°09'4.5823"N | 104°33'5.9283"W | 0.00 | |
| 9330.00† | 90.000 | 359.500 | 6973.00 | 2717.78 | 2705.73 | -357.75 | 40°09'5.5705"N | 104°33'5.9257"W | 0.00 | |
| 9430.00† | 90.000 | 359.500 | 6973.00 | 2817.73 | 2805.72 | -358.62 | 40°09'6.5587"N | 104°33'5.9232"W | 0.00 | |
| 9530.00† | 90.000 | 359.500 | 6973.00 | 2917.68 | 2905.72 | -359.49 | 40°09'7.5469"N | 104°33'5.9207"W | 0.00 | |
| 9630.00† | 90.000 | 359.500 | 6973.00 | 3017.63 | 3005.71 | -360.36 | 40°09'8.5351"N | 104°33'5.9181"W | 0.00 | |
| 9730.00† | 90.000 | 359.500 | 6973.00 | 3117.59 | 3105.71 | -361.24 | 40°09'9.5233"N | 104°33'5.9156"W | 0.00 | |
| 9830.00† | 90.000 | 359.500 | 6973.00 | 3217.54 | 3205.71 | -362.11 | 40°09'10.5115"N | 104°33'5.9130"W | 0.00 | |
| 9930.00† | 90.000 | 359.500 | 6973.00 | 3317.49 | 3305.70 | -362.98 | 40°09'11.4997"N | 104°33'5.9105"W | 0.00 | |
| 10030.00† | 90.000 | 359.500 | 6973.00 | 3417.44 | 3405.70 | -363.85 | 40°09'12.4879"N | 104°33'5.9080"W | 0.00 | |
| 10130.00† | 90.000 | 359.500 | 6973.00 | 3517.39 | 3505.70 | -364.73 | 40°09'13.4761"N | 104°33'5.9054"W | 0.00 | |
| 10230.00† | 90.000 | 359.500 | 6973.00 | 3617.35 | 3605.69 | -365.60 | 40°09'14.4643"N | 104°33'5.9029"W | 0.00 | |
| 10330.00† | 90.000 | 359.500 | 6973.00 | 3717.30 | 3705.69 | -366.47 | 40°09'15.4525"N | 104°33'5.9004"W | 0.00 | |
| 10430.00† | 90.000 | 359.500 | 6973.00 | 3817.25 | 3805.68 | -367.34 | 40°09'16.4407"N | 104°33'5.8978"W | 0.00 | |
| 10530.00† | 90.000 | 359.500 | 6973.00 | 3917.20 | 3905.68 | -368.21 | 40°09'17.4289"N | 104°33'5.8953"W | 0.00 | |
| 10630.00† | 90.000 | 359.500 | 6973.00 | 4017.16 | 4005.68 | -369.09 | 40°09'18.4171"N | 104°33'5.8927"W | 0.00 | |
| 10730.00† | 90.000 | 359.500 | 6973.00 | 4117.11 | 4105.67 | -369.96 | 40°09'19.4053"N | 104°33'5.8902"W | 0.00 | |
| 10830.00† | 90.000 | 359.500 | 6973.00 | 4217.06 | 4205.67 | -370.83 | 40°09'20.3935"N | 104°33'5.8877"W | 0.00 | |
| 10930.00† | 90.000 | 359.500 | 6973.00 | 4317.01 | 4305.66 | -371.70 | 40°09'21.3817"N | 104°33'5.8851"W | 0.00 | |
| 11030.00† | 90.000 | 359.500 | 6973.00 | 4416.96 | 4405.66 | -372.58 | 40°09'22.3699"N | 104°33'5.8826"W | 0.00 | |
| 11130.00† | 90.000 | 359.500 | 6973.00 | 4516.92 | 4505.66 | -373.45 | 40°09'23.3581"N | 104°33'5.8800"W | 0.00 | |
| 11230.00† | 90.000 | 359.500 | 6973.00 | 4616.87 | 4605.65 | -374.32 | 40°09'24.3464"N | 104°33'5.8775"W | 0.00 | |
| 11330.00† | 90.000 | 359.500 | 6973.00 | 4716.82 | 4705.65 | -375.19 | 40°09'25.3346"N | 104°33'5.8750"W | 0.00 | |
| 11430.00† | 90.000 | 359.500 | 6973.00 | 4816.77 | 4805.65 | -376.07 | 40°09'26.3228"N | 104°33'5.8724"W | 0.00 | |
| 11530.00† | 90.000 | 359.500 | 6973.00 | 4916.73 | 4905.64 | -376.94 | 40°09'27.3110"N | 104°33'5.8699"W | 0.00 | |
| 11630.00† | 90.000 | 359.500 | 6973.00 | 5016.68 | 5005.64 | -377.81 | 40°09'28.2992"N | 104°33'5.8674"W | 0.00 | |
| 11730.00† | 90.000 | 359.500 | 6973.00 | 5116.63 | 5105.63 | -378.68 | 40°09'29.2874"N | 104°33'5.8648"W | 0.00 | |
| 11830.00† | 90.000 | 359.500 | 6973.00 | 5216.58 | 5205.63 | -379.56 | 40°09'30.2756"N | 104°33'5.8623"W | 0.00 | |
| 11930.00† | 90.000 | 359.500 | 6973.00 | 5316.53 | 5305.63 | -380.43 | 40°09'31.2638"N | 104°33'5.8597"W | 0.00 | |
| 12030.00† | 90.000 | 359.500 | 6973.00 | 5416.49 | 5405.62 | -381.30 | 40°09'32.2520"N | 104°33'5.8572"W | 0.00 | |
| 12130.00† | 90.000 | 359.500 | 6973.00 | 5516.44 | 5505.62 | -382.17 | 40°09'33.2402"N | 104°33'5.8547"W | 0.00 | |
| 12230.00† | 90.000 | 359.500 | 6973.00 | 5616.39 | 5605.62 | -383.05 | 40°09'34.2284"N | 104°33'5.8521"W | 0.00 | |
| 12330.00† | 90.000 | 359.500 | 6973.00 | 5716.34 | 5705.61 | -383.92 | 40°09'35.2166"N | 104°33'5.8496"W | 0.00 | |
| 12430.00† | 90.000 | 359.500 | 6973.00 | 5816.30 | 5805.61 | -384.79 | 40°09'36.2048"N | 104°33'5.8470"W | 0.00 | |
| 12530.00† | 90.000 | 359.500 | 6973.00 | 5916.25 | 5905.60 | -385.66 | 40°09'37.1930"N | 104°33'5.8445"W | 0.00 | |
| 12630.00† | 90.000 | 359.500 | 6973.00 | 6016.20 | 6005.60 | -386.53 | 40°09'38.1812"N | 104°33'5.8420"W | 0.00 | |
| 12730.00† | 90.000 | 359.500 | 6973.00 | 6116.15 | 6105.60 | -387.41 | 40°09'39.1694"N | 104°33'5.8394"W | 0.00 | |
| 12830.00† | 90.000 | 359.500 | 6973.00 | 6216.10 | 6205.59 | -388.28 | 40°09'40.1576"N | 104°33'5.8369"W | 0.00 | |
| 12930.00† | 90.000 | 359.500 | 6973.00 | 6316.06 | 6305.59 | -389.15 | 40°09'41.1458"N | 104°33'5.8344"W | 0.00 | |



Planned Wellpath Report
GIG-EM STATE Y9-730 (REV-B.0) PWP
Page 5 of 8



| REFERENCE WELLPATH IDENTIFICATION | | | |
|-----------------------------------|--|-----------|-------------------------|
| Operator | NOBLE ENERGY, INC | Well | GIG-EM STATE Y9-730 |
| Field | WELD COUNTY (NOBLE NAD 83 GRID) | API/Legal | |
| Facility | SEC.16-T02N-R64W | Wellbore | GIG-EM STATE Y9-730 PWB |
| Slot | SLOT#19 GIG-EM STATE Y9-730 (595'FNL&975'FEL,SEC.16) | | |

| WELLPATH DATA (182 stations) † = interpolated, ‡ = extrapolated station | | | | | | | | | | |
|---|--------------------|----------------|-------------|-------------------|---------------|--------------|-----------------|-----------------|------------------|----------|
| MD [ft] | Inclination [°] | Azimuth [°] | TVD [ft] | Vert Sect [ft] | North [ft] | East [ft] | Latitude | Longitude | DLS [°/100ft] | Comments |
| 13030.00† | 90.000 | 359.500 | 6973.00 | 6416.01 | 6405.58 | -390.02 | 40°09'42.1340"N | 104°33'5.8318"W | 0.00 | |
| 13130.00† | 90.000 | 359.500 | 6973.00 | 6515.96 | 6505.58 | -390.90 | 40°09'43.1222"N | 104°33'5.8293"W | 0.00 | |
| 13230.00† | 90.000 | 359.500 | 6973.00 | 6615.91 | 6605.58 | -391.77 | 40°09'44.1104"N | 104°33'5.8267"W | 0.00 | |
| 13330.00† | 90.000 | 359.500 | 6973.00 | 6715.87 | 6705.57 | -392.64 | 40°09'45.0986"N | 104°33'5.8242"W | 0.00 | |
| 13430.00† | 90.000 | 359.500 | 6973.00 | 6815.82 | 6805.57 | -393.51 | 40°09'46.0868"N | 104°33'5.8217"W | 0.00 | |
| 13530.00† | 90.000 | 359.500 | 6973.00 | 6915.77 | 6905.57 | -394.39 | 40°09'47.0750"N | 104°33'5.8191"W | 0.00 | |
| 13630.00† | 90.000 | 359.500 | 6973.00 | 7015.72 | 7005.56 | -395.26 | 40°09'48.0632"N | 104°33'5.8166"W | 0.00 | |
| 13730.00† | 90.000 | 359.500 | 6973.00 | 7115.67 | 7105.56 | -396.13 | 40°09'49.0514"N | 104°33'5.8140"W | 0.00 | |
| 13830.00† | 90.000 | 359.500 | 6973.00 | 7215.63 | 7205.55 | -397.00 | 40°09'50.0396"N | 104°33'5.8115"W | 0.00 | |
| 13930.00† | 90.000 | 359.500 | 6973.00 | 7315.58 | 7305.55 | -397.88 | 40°09'51.0278"N | 104°33'5.8090"W | 0.00 | |
| 14030.00† | 90.000 | 359.500 | 6973.00 | 7415.53 | 7405.55 | -398.75 | 40°09'52.0160"N | 104°33'5.8064"W | 0.00 | |
| 14130.00† | 90.000 | 359.500 | 6973.00 | 7515.48 | 7505.54 | -399.62 | 40°09'53.0042"N | 104°33'5.8039"W | 0.00 | |
| 14230.00† | 90.000 | 359.500 | 6973.00 | 7615.44 | 7605.54 | -400.49 | 40°09'53.9924"N | 104°33'5.8014"W | 0.00 | |
| 14330.00† | 90.000 | 359.500 | 6973.00 | 7715.39 | 7705.54 | -401.37 | 40°09'54.9807"N | 104°33'5.7988"W | 0.00 | |
| 14430.00† | 90.000 | 359.500 | 6973.00 | 7815.34 | 7805.53 | -402.24 | 40°09'55.9689"N | 104°33'5.7963"W | 0.00 | |
| 14530.00† | 90.000 | 359.500 | 6973.00 | 7915.29 | 7905.53 | -403.11 | 40°09'56.9571"N | 104°33'5.7937"W | 0.00 | |
| 14630.00† | 90.000 | 359.500 | 6973.00 | 8015.24 | 8005.52 | -403.98 | 40°09'57.9453"N | 104°33'5.7912"W | 0.00 | |
| 14730.00† | 90.000 | 359.500 | 6973.00 | 8115.20 | 8105.52 | -404.86 | 40°09'58.9335"N | 104°33'5.7887"W | 0.00 | |
| 14830.00† | 90.000 | 359.500 | 6973.00 | 8215.15 | 8205.52 | -405.73 | 40°09'59.9217"N | 104°33'5.7861"W | 0.00 | |
| 14930.00† | 90.000 | 359.500 | 6973.00 | 8315.10 | 8305.51 | -406.60 | 40°10'0.9099"N | 104°33'5.7836"W | 0.00 | |
| 15030.00† | 90.000 | 359.500 | 6973.00 | 8415.05 | 8405.51 | -407.47 | 40°10'1.8981"N | 104°33'5.7810"W | 0.00 | |
| 15130.00† | 90.000 | 359.500 | 6973.00 | 8515.01 | 8505.50 | -408.34 | 40°10'2.8863"N | 104°33'5.7785"W | 0.00 | |
| 15230.00† | 90.000 | 359.500 | 6973.00 | 8614.96 | 8605.50 | -409.22 | 40°10'3.8745"N | 104°33'5.7760"W | 0.00 | |
| 15330.00† | 90.000 | 359.500 | 6973.00 | 8714.91 | 8705.50 | -410.09 | 40°10'4.8627"N | 104°33'5.7734"W | 0.00 | |
| 15430.00† | 90.000 | 359.500 | 6973.00 | 8814.86 | 8805.49 | -410.96 | 40°10'5.8509"N | 104°33'5.7709"W | 0.00 | |
| 15530.00† | 90.000 | 359.500 | 6973.00 | 8914.81 | 8905.49 | -411.83 | 40°10'6.8391"N | 104°33'5.7683"W | 0.00 | |
| 15630.00† | 90.000 | 359.500 | 6973.00 | 9014.77 | 9005.49 | -412.71 | 40°10'7.8273"N | 104°33'5.7658"W | 0.00 | |
| 15730.00† | 90.000 | 359.500 | 6973.00 | 9114.72 | 9105.48 | -413.58 | 40°10'8.8155"N | 104°33'5.7633"W | 0.00 | |
| 15830.00† | 90.000 | 359.500 | 6973.00 | 9214.67 | 9205.48 | -414.45 | 40°10'9.8037"N | 104°33'5.7607"W | 0.00 | |
| 15930.00† | 90.000 | 359.500 | 6973.00 | 9314.62 | 9305.47 | -415.32 | 40°10'10.7919"N | 104°33'5.7582"W | 0.00 | |
| 16030.00† | 90.000 | 359.500 | 6973.00 | 9414.58 | 9405.47 | -416.20 | 40°10'11.7801"N | 104°33'5.7556"W | 0.00 | |
| 16130.00† | 90.000 | 359.500 | 6973.00 | 9514.53 | 9505.47 | -417.07 | 40°10'12.7683"N | 104°33'5.7531"W | 0.00 | |
| 16230.00† | 90.000 | 359.500 | 6973.00 | 9614.48 | 9605.46 | -417.94 | 40°10'13.7565"N | 104°33'5.7506"W | 0.00 | |
| 16330.00† | 90.000 | 359.500 | 6973.00 | 9714.43 | 9705.46 | -418.81 | 40°10'14.7447"N | 104°33'5.7480"W | 0.00 | |
| 16430.00† | 90.000 | 359.500 | 6973.00 | 9814.38 | 9805.46 | -419.69 | 40°10'15.7329"N | 104°33'5.7455"W | 0.00 | |
| 16530.00† | 90.000 | 359.500 | 6973.00 | 9914.34 | 9905.45 | -420.56 | 40°10'16.7211"N | 104°33'5.7430"W | 0.00 | |
| 16630.00† | 90.000 | 359.500 | 6973.00 | 10014.29 | 10005.45 | -421.43 | 40°10'17.7093"N | 104°33'5.7404"W | 0.00 | |
| 16730.00† | 90.000 | 359.500 | 6973.00 | 10114.24 | 10105.44 | -422.30 | 40°10'18.6975"N | 104°33'5.7379"W | 0.00 | |
| 16830.00† | 90.000 | 359.500 | 6973.00 | 10214.19 | 10205.44 | -423.18 | 40°10'19.6857"N | 104°33'5.7353"W | 0.00 | |
| 16930.00† | 90.000 | 359.500 | 6973.00 | 10314.15 | 10305.44 | -424.05 | 40°10'20.6739"N | 104°33'5.7328"W | 0.00 | |
| 17030.00† | 90.000 | 359.500 | 6973.00 | 10414.10 | 10405.43 | -424.92 | 40°10'21.6621"N | 104°33'5.7303"W | 0.00 | |
| 17130.00† | 90.000 | 359.500 | 6973.00 | 10514.05 | 10505.43 | -425.79 | 40°10'22.6503"N | 104°33'5.7277"W | 0.00 | |
| 17230.00† | 90.000 | 359.500 | 6973.00 | 10614.00 | 10605.42 | -426.66 | 40°10'23.6385"N | 104°33'5.7252"W | 0.00 | |
| 17276.30 | 90.000 | 359.500 | 6973.00‡ | 10660.28 | 10651.72 | -427.07 | 40°10'24.0960"N | 104°33'5.7240"W | 0.00 | BPZ |
| 17330.00† | 90.000 | 359.424 | 6973.00 | 10713.96 | 10705.42 | -427.57 | 40°10'24.6267"N | 104°33'5.7231"W | 0.14 | |



Planned Wellpath Report

GIG-EM STATE Y9-730 (REV-B.0) PWP

Page 6 of 8



REFERENCE WELLPATH IDENTIFICATION

| | | | |
|----------|--|-----------|-------------------------|
| Operator | NOBLE ENERGY, INC | Well | GIG-EM STATE Y9-730 |
| Field | WELD COUNTY (NOBLE NAD 83 GRID) | API/Legal | |
| Facility | SEC.16-T02N-R64W | Wellbore | GIG-EM STATE Y9-730 PWB |
| Slot | SLOT#19 GIG-EM STATE Y9-730 (595'FNL&975'FEL,SEC.16) | | |

WELLPATH DATA (182 stations) † = interpolated, ‡ = extrapolated station

| MD [ft] | Inclination [°] | Azimuth [°] | TVD [ft] | Vert Sect [ft] | North [ft] | East [ft] | Latitude | Longitude | DLS [°/100ft] | Comments |
|------------|--------------------|----------------|----------------------|-------------------|---------------|--------------|-----------------|-----------------|------------------|----------|
| 17430.00† | 90.000 | 359.284 | 6973.00 | 10813.92 | 10805.41 | -428.70 | 40°10'25.6149"N | 104°33'5.7238"W | 0.14 | |
| 17436.59 | 90.000 | 359.274 | 6973.00 ³ | 10820.50 | 10812.00 | -428.78 | 40°10'25.6800"N | 104°33'5.7240"W | 0.14 | BHL |

HOLE & CASING SECTIONS - Ref Wellbore: GIG-EM STATE Y9-730 PWB Ref Wellpath: GIG-EM STATE Y9-730 (REV-B.0) PWP

| String/Diameter | Start MD [ft] | End MD [ft] | Interval [ft] | Start TVD [ft] | End TVD [ft] | Start N/S [ft] | Start E/W [ft] | End N/S [ft] | End E/W [ft] |
|------------------------|------------------|----------------|------------------|-------------------|-----------------|-------------------|-------------------|-----------------|-----------------|
| 9.625in Casing Surface | 30.00 | 1950.00 | 1920.00 | 30.00 | 1950.00 | 0.00 | 0.00 | 0.00 | 0.00 |

TARGETS

| Name | MD [ft] | TVD [ft] | North [ft] | East [ft] | Grid East [US ft] | Grid North [US ft] | Latitude | Longitude | Shape |
|---|---------------------------------------|-------------|---------------|--------------|----------------------|-----------------------|-----------------|------------------|---------|
| Rubicon State Y16-718 SECTION 4 | N/A | -3.00 | -1.65 | 21.98 | 3265469.02 | 1296762.33 | 40°08'38.7774"N | 104°33'1.4092"W | polygon |
| | 2D Polygon: dimensions not calculated | | | | | | | | |
| Rubicon State Y16-718 SECTION 9 | N/A | -3.00 | -1.65 | 21.98 | 3265469.02 | 1296762.33 | 40°08'38.7774"N | 104°33'1.4092"W | polygon |
| | 2D Polygon: dimensions not calculated | | | | | | | | |
| HULLABALOO Y21-787 SECTION 16 | N/A | 60.00 | 130.30 | -3504.63 | 3261942.56 | 1296894.28 | 40°08'40.4520"N | 104°33'46.8000"W | polygon |
| | 2D Polygon: dimensions not calculated | | | | | | | | |
| GIG-EM STATE Y9-730 BHL (300'FNL & 1292'FEL,SEC.04) | N/A | 6973.00 | 10811.20 | -427.85 | 3265019.21 | 1307574.70 | 40°10'25.6720"N | 104°33'5.7121"W | point |
| | | | | | | | | | |
| 3) GIG-EM STATE Y9-730 BHL 2(300'FNL & 1292'FEL,SEC.04) | 17436.59 | 6973.00 | 10812.00 | -428.78 | 3265018.28 | 1307575.51 | 40°10'25.6800"N | 104°33'5.7240"W | point |
| | | | | | | | | | |
| 2) GIG-EM STATE Y9-730 BPZ(460'FNL & 1290'FEL,SEC.04) | 17276.30 | 6973.00 | 10651.72 | -427.07 | 3265019.99 | 1307415.23 | 40°10'24.0960"N | 104°33'5.7240"W | point |
| | | | | | | | | | |
| GIG-EM STATE Y9-730 LP /TPZ (133'FSL & 1305'FEL,SEC.09) | N/A | 6973.00 | 724.37 | -340.16 | 3265106.89 | 1297488.31 | 40°08'45.9898"N | 104°33'5.9722"W | point |
| | | | | | | | | | |
| 1) GIG-EM STATE Y9-730 LP /TPZ 2(133'FSL & 1305'FEL,SEC.09) | 7349.19 | 6973.00 | 724.99 | -340.47 | 3265106.59 | 1297488.94 | 40°08'45.9960"N | 104°33'5.9760"W | point |
| | | | | | | | | | |



Planned Wellpath Report

GIG-EM STATE Y9-730 (REV-B.0) PWP

Page 7 of 8



| REFERENCE WELLPATH IDENTIFICATION | | | |
|-----------------------------------|--|-----------|-------------------------|
| Operator | NOBLE ENERGY, INC | Well | GIG-EM STATE Y9-730 |
| Field | WELD COUNTY (NOBLE NAD 83 GRID) | API/Legal | |
| Facility | SEC.16-T02N-R64W | Wellbore | GIG-EM STATE Y9-730 PWB |
| Slot | SLOT#19 GIG-EM STATE Y9-730 (595'FNL&975'FEL,SEC.16) | | |

| SURVEY PROGRAM - Ref Wellbore: GIG-EM STATE Y9-730 PWB Ref Wellpath: GIG-EM STATE Y9-730 (REV-B.0) PWP | | | | |
|---|----------------|---|------------------|-------------------------|
| Start MD [ft] | End MD [ft] | Positional Uncertainty Model | Log Name/Comment | Wellbore |
| 30.00 | 1950.00 | BH Generic gyro - northseeking (Standard) | | GIG-EM STATE Y9-730 PWB |
| 1950.00 | 17483.72 | OWSG MWD rev2 (MS+IFR1) | | GIG-EM STATE Y9-730 PWB |



Planned Wellpath Report
GIG-EM STATE Y9-730 (REV-B.0) PWP
Page 8 of 8



| REFERENCE WELLPATH IDENTIFICATION | | | |
|-----------------------------------|--|-----------|-------------------------|
| Operator | NOBLE ENERGY, INC | Well | GIG-EM STATE Y9-730 |
| Field | WELD COUNTY (NOBLE NAD 83 GRID) | API/Legal | |
| Facility | SEC.16-T02N-R64W | Wellbore | GIG-EM STATE Y9-730 PWB |
| Slot | SLOT#19 GIG-EM STATE Y9-730 (595'FNL&975'FEL,SEC.16) | | |

| DESIGN COMMENTS | | | | |
|-----------------|--------------------|----------------|-------------|-------------------|
| MD [ft] | Inclination [°] | Azimuth [°] | TVD [ft] | Comment |
| 30.00 | 0.000 | 287.012 | 30.00 | SHL |
| 2175.00 | 0.000 | 287.012 | 2175.00 | End of Tangent |
| 2388.56 | 4.271 | 287.012 | 2388.37 | End of Build (XS) |
| 6363.46 | 4.271 | 287.012 | 6352.22 | KOP |
| 7349.19 | 90.000 | 359.500 | 6973.00 | LP/TPZ |
| 17276.30 | 90.000 | 359.500 | 6973.00 | BPZ |
| 17436.59 | 90.000 | 359.274 | 6973.00 | BHL |



Closest Approach Clearance Summary Report

GIG-EM STATE Y9-730 (REV-B.0) PWP - SPE WPTS Stop Drilling HSE Risk (2017)

Page 1 of 4



| REFERENCE WELLPATH IDENTIFICATION | | | |
|-----------------------------------|--|-----------|-------------------------|
| Operator | NOBLE ENERGY, INC | Well | GIG-EM STATE Y9-730 |
| Field | WELD COUNTY (NOBLE NAD 83 GRID) | API/Legal | |
| Facility | SEC.16-T02N-R64W | Wellbore | GIG-EM STATE Y9-730 PWB |
| Slot | SLOT#19 GIG-EM STATE Y9-730 (595'FNL&975'FEL,SEC.16) | | |

| REPORT SETUP INFORMATION | | | |
|--------------------------|---|------------------|------------------------|
| Projection System | NAD83 / Lambert Colorado SP, Northern Zone (501), US feet | Software System | WellArchitect® 6.0 |
| North Reference | Grid | User | Guenaler |
| Scale | 0.999959 | Report Generated | 5/3/2022 at 2:26:57 PM |
| Convergence at slot | 0.61° East | Database | WA_Denver |

| WELLPATH LOCATION | | | | | | |
|-----------------------|-------------------|----------|------------------|-----------------|------------------------|------------------|
| | Local coordinates | | Grid coordinates | | Geographic coordinates | |
| | North[ft] | East[ft] | Easting[US ft] | Northing[US ft] | Latitude | Longitude |
| Slot Location | -130.30 | 3504.63 | 3265447.04 | 1296763.98 | 40°08'38.7960"N | 104°33'1.6920"W |
| Facility Reference Pt | | | 3261942.56 | 1296894.27 | 40°08'40.4520"N | 104°33'46.8000"W |
| Field Reference Pt | | | 3000000.00 | 4454105.15 | 48°46'34.3150"N | 105°30'0.0000"W |

| WELLPATH DATUM | | | |
|--------------------------|-------------------|---|-----------|
| Calculation method | Minimum Curvature | Rig(30'KB) (RKB) to Facility Vertical Datum | 4973.00ft |
| Horizontal Reference Pt | Slot | Rig(30'KB) (RKB) to Mean Sea Level | 4973.00ft |
| Vertical Reference Pt | Rig(30'KB) (RKB) | Rig(30'KB) (RKB) to Ground Level at Slot (SLOT#19 GIG-EM STATE Y9-730 (595'FNL&975'FEL,SEC.16)) | 4973.00ft |
| MD Reference Pt | Rig(30'KB) (RKB) | | |
| Field Vertical Reference | Mean Sea Level | | |

| POSITIONAL UNCERTAINTY CALCULATION SETTINGS | | | | | |
|---|------------------|------------------|---------|------------------------------|----------|
| Ellipse Confidence Limit | 3.50 Std Dev | Ellipse Start MD | 30.00ft | Surface Position Uncertainty | included |
| Declination | 7.71° East of TN | Dip Angle | 66.43° | Mag Field Strength | 51798 nT |
| Slot Surface Uncertainty @1SD | | Horizontal | 0.100ft | Vertical | 1.000ft |
| Facility Surface Uncertainty @1SD | | Horizontal | 8.200ft | Vertical | 3.000ft |
| Positional Uncertainty values in the WELLPATH DATA table are the projection of the ellipsoid of uncertainty onto the vertical and horizontal planes | | | | | |



Closest Approach Clearance Summary Report

GIG-EM STATE Y9-730 (REV-B.0) PWP - SPE WPTS Stop Drilling HSE Risk (2017)

Page 2 of 4



| REFERENCE WELLPATH IDENTIFICATION | | | |
|-----------------------------------|--|-----------|-------------------------|
| Operator | NOBLE ENERGY, INC | Well | GIG-EM STATE Y9-730 |
| Field | WELD COUNTY (NOBLE NAD 83 GRID) | API/Legal | |
| Facility | SEC.16-T02N-R64W | Wellbore | GIG-EM STATE Y9-730 PWB |
| Slot | SLOT#19 GIG-EM STATE Y9-730 (595'FNL&975'FEL,SEC.16) | | |

| PROXIMITY-SCAN RULE | | | |
|----------------------------|--|----------------------|-------|
| Rule Name | SPE WPTS Stop Drilling HSE Risk (2017) | Rule Based On | Ratio |
| Plane of Rule | Closest Approach | Threshold Value | 1.00 |
| Include Casing & Hole Size | yes | Apply Cone of Safety | no |

| HOLE & CASING SECTIONS - Ref Wellbore: GIG-EM STATE Y9-730 PWB Ref Wellpath: GIG-EM STATE Y9-730 (REV-B.0) PWP | | | | | | | | | |
|---|------------------|----------------|------------------|-------------------|-----------------|-------------------|-------------------|-----------------|-----------------|
| String/Diameter | Start MD [ft] | End MD [ft] | Interval [ft] | Start TVD [ft] | End TVD [ft] | Start N/S [ft] | Start E/W [ft] | End N/S [ft] | End E/W [ft] |
| 9.625in Casing Surface | 30.00 | 1950.00 | 1920.00 | 30.00 | 1950.00 | 0.00 | 0.00 | 0.00 | 0.00 |

| SURVEY PROGRAM - Ref Wellbore: GIG-EM STATE Y9-730 PWB Ref Wellpath: GIG-EM STATE Y9-730 (REV-B.0) PWP | | | | |
|---|----------------|---|------------------|-------------------------|
| Start MD [ft] | End MD [ft] | Positional Uncertainty Model | Log Name/Comment | Wellbore |
| 30.00 | 1950.00 | BH Generic gyro - northseeking (Standard) | | GIG-EM STATE Y9-730 PWB |
| 1950.00 | 17483.72 | OWSG MWD rev2 (MS+IFR1) | | GIG-EM STATE Y9-730 PWB |



Closest Approach Clearance Summary Report

GIG-EM STATE Y9-730 (REV-B.0) PWP - SPE WPTS Stop Drilling HSE Risk (2017)

Page 3 of 4



| REFERENCE WELLPATH IDENTIFICATION | | | |
|-----------------------------------|--|-----------|-------------------------|
| Operator | NOBLE ENERGY, INC | Well | GIG-EM STATE Y9-730 |
| Field | WELD COUNTY (NOBLE NAD 83 GRID) | API/Legal | |
| Facility | SEC.16-T02N-R64W | Wellbore | GIG-EM STATE Y9-730 PWB |
| Slot | SLOT#19 GIG-EM STATE Y9-730 (595'FNL&975'FEL,SEC.16) | | |

| CALCULATION RANGE & CUTOFF | | |
|----------------------------|-------------------|--------------------|
| From: 30.00ft MD | To: 17436.59ft MD | C-C Cutoff: (none) |

| OFFSET WELL CLEARANCE SUMMARY (31 Offset Wellpaths selected) Ratios are calculated in Closest Approach plane | | | | | | | | | | | | |
|--|--|-------------------------|---------------------------------|--|-----------------|------------------------|-------------------------|------------------------|--------------------------|-----------|--------------------------|-------------|
| Offset Facility | Offset Slot | Offset Well | Offset Wellbore | Offset Wellpath | Wellbore Status | C-C Clearance Distance | | | Rule Separation Ratio | | | |
| | | | | | | Ref MD [ft] | Min C-C Clear Dist [ft] | Diverging from MD [ft] | Ref MD of Min Ratio [ft] | Min Ratio | Min Ratio Dvrg from [ft] | Rule Status |
| Y Section 09 | (Perkins USX Y09-23) | Perkins USX Y09-23 | Original Drilling | Original Drilling\Original Drilling - As Drilled | Drilling | 8400.39 | 6.44 | 8400.39 | 8402.33 | 0.02 | 8402.33 | FAIL |
| SEC.16-T02N-R64W | SLOT#18 GIG-EM STATE Y9-740 (595'FNL&997'FEL,SEC.16) | GIG-EM STATE Y9-740 | GIG-EM STATE Y9-740 PWB | GIG-EM STATE Y9-740 (REV-B.0) PWP | Planned | 30.00 | 22.37 | 17330.00 | 2102.31 | 1.31 | 17436.59 | PASS |
| Y Section 04 | (HSR-Guttersen 01-04) | HSR-Guttersen 01-04 | Original Drilling | Original Drilling\Original Drilling - As Drilled | Drilling | 17099.84 | 382.30 | 17099.84 | 17104.32 | 2.39 | 17104.32 | PASS |
| SEC.16-T02N-R64W | SLOT#17 GIG-EM STATE Y9-751 (595'FNL&1020'FEL,SEC.16) | GIG-EM STATE Y9-751 | GIG-EM STATE Y9-751 PWB | GIG-EM STATE Y9-751 (REV-B.0) PWP | Planned | 30.00 | 44.73 | 17430.00 | 2014.08 | 2.92 | 17436.59 | PASS |
| SEC.16-T02N-R64W | SLOT#20 GIG-EM STATE Y9-719 (595'FNL&952'FEL,SEC.16) | GIG-EM STATE Y9-719 | GIG-EM STATE Y9-719 PWB | GIG-EM STATE Y9-719 (REV-B.0) PWP | Planned | 30.00 | 22.37 | 17330.00 | 17436.59 | 3.09 | 17436.59 | PASS |
| Y Section 04 | (HSR-Guttersen 02-04) | HSR-Guttersen 02-04 | Original Drilling | Original Drilling\Original Drilling - As Drilled | Drilling | 17105.74 | 722.52 | 17105.74 | 17133.20 | 4.53 | 17133.20 | PASS |
| SEC.10-T02N-R64W | SLOT#12 Ex.Oscar #Y10-79HN(2380'FSL&550'FWL,SEC.10)(PR) | Ex.Oscar #Y10-79HN ST01 | Ex.Oscar #Y10-79HN ST01 (A) AWB | Ex.Oscar #Y10-79HN ST01 (A) AWP | Drilling | 11377.15 | 1277.59 | 16130.00 | 17436.59 | 4.69 | 17436.59 | PASS |
| SEC.16-T02N-R64W | SLOT#09 HULLABALOO Y21-726(445'FNL&930'FEL,SEC.16) | HULLABALOO Y21-726 | HULLABALOO Y21-726 AWB | HULLABALOO Y21-726 AWP | Drilling | 1015.44 | 153.87 | 7001.98 | 7001.98 | 4.76 | 7001.98 | PASS |
| Y Section 04 | (HSR-Guttersen 07-04) | HSR-Guttersen 07-04 | Original Drilling | Original Drilling\Original Drilling - As Drilled | Drilling | 15872.78 | 873.79 | 15872.78 | 15918.80 | 6.12 | 15918.80 | PASS |
| SEC.16-T02N-R64W | SLOT#08 HULLABALOO Y21-736(445'FNL&967'FEL,SEC.16) | HULLABALOO Y21-736 | HULLABALOO Y21-736 AWB | HULLABALOO Y21-736 AWP | Drilling | 1489.13 | 145.51 | 6906.46 | 6906.46 | 8.74 | 6906.46 | PASS |
| SEC.16-T02N-R64W | SLOT#16 GIG-EM STATE Y9-761 (595'FNL&2610'FWL,SEC.16) | GIG-EM STATE Y9-761 | GIG-EM STATE Y9-761 PWB | GIG-EM STATE Y9-761 (REV-B.0) PWP | Planned | 2560.78 | 1725.22 | 17330.00 | 17436.59 | 9.27 | 17436.59 | PASS |
| Y Section 09 | (Perkins 34-09) | Perkins 34-09 | Wellbore #1 | Wellbore #1\Wellbore #1 - As Drilled | Drilling | 7818.13 | 594.28 | 7818.13 | 7843.65 | 10.73 | 7843.65 | PASS |
| SEC.16-T02N-R64W | SLOT#07 HULLABALOO Y21-746(445'FNL&1005'FEL,SEC.16) | HULLABALOO Y21-746 | HULLABALOO Y21-746 AWB | HULLABALOO Y21-746 AWP | Drilling | 1470.03 | 147.35 | 2388.56 | 2588.01 | 11.92 | 6830.00 | PASS |
| SEC.16-T02N-R64W | SLOT#15 GIG-EM STATE Y9-772 (595'FNL&2588'FWL,SEC.16) | GIG-EM STATE Y9-772 | GIG-EM STATE Y9-772 PWB | GIG-EM STATE Y9-772 (REV-B.0) PWP | Planned | 2461.17 | 1754.68 | 17430.00 | 17436.59 | 12.33 | 17436.59 | PASS |
| SEC.10-T02N-R64W | SLOT#12 Ex.Oscar #Y10-79HN(2380'FSL&550'FWL,SEC.10)(PR) | Ex.Oscar #Y10-79HN OWB | Ex.Oscar #Y10-79HN AWB | Ex.Oscar #Y10-79HN (A) AWP | Drilling | 10363.65 | 1330.59 | 10363.65 | 11041.91 | 13.25 | 11041.91 | PASS |
| Y Section 04 | (HSR-Guttersen 03-04) | HSR-Guttersen 03-04 | Original Drilling | Original Drilling\Original Drilling - As Drilled | Drilling | 17025.60 | 2162.88 | 17025.60 | 17253.30 | 13.60 | 17253.30 | PASS |
| SEC.16-T02N-R64W | SLOT#10 HULLABALOO Y21-716(445'FNL&892'FEL,SEC.16) | HULLABALOO Y21-716 | HULLABALOO Y21-716 AWB | HULLABALOO Y21-716 AWP | Drilling | 1794.58 | 162.32 | 7030.00 | 2073.98 | 14.65 | 7130.00 | PASS |
| SEC.16-T02N-R64W | SLOT#14 GIG-EM STATE Y9-782 (595'FNL&2565'FWL,SEC.16) | GIG-EM STATE Y9-782 | GIG-EM STATE Y9-782 PWB | GIG-EM STATE Y9-782 (REV-B.0) PWP | Planned | 130.00 | 1778.10 | 17330.00 | 17436.59 | 15.45 | 17436.59 | PASS |
| Y Section 04 | (Melvin Y04-04) | Melvin Y04-04 | Original Drilling | Original Drilling\Original Drilling - As Drilled | Drilling | 16819.51 | 2978.82 | 16819.51 | 17248.32 | 18.92 | 17248.32 | PASS |
| SEC.29-T03N-R64W | SLOT#41 GUTTERSEN STATE Y05-719 (2237'FNL & 538'FEL, SEC.29) | GUTTERSEN STATE Y05-719 | GUTTERSEN STATE Y05-719 AWB | GUTTERSEN STATE Y05-719 AWP | Drilling | 12826.91 | 4220.72 | 17130.00 | 12476.43 | 19.19 | 17430.00 | PASS |
| SEC.16-T02N-R64W | SLOT#13 Ex.STATE #21(1320'FSL&1170'FWL,SEC.16) (PA) 7700'MD) | Ex.STATE #21 | Ex.STATE #21 AWB | Ex.STATE #21 AWP | Drilling | 6386.14 | 4480.20 | 6386.14 | 6920.33 | 22.70 | 6920.33 | PASS |
| Y Section 04 | (HSR-Guttersen 05-04) | HSR-Guttersen 05-04 | Original Drilling | Original Drilling\Original Drilling - As Drilled | Drilling | 15660.80 | 3272.97 | 15660.80 | 16232.54 | 22.94 | 16232.54 | PASS |
| SEC.16-T02N-R64W | SLOT#11 Ex.STATE#1(1351'FNL&1320'FEL,SEC.16) (PR) 7700'MD | Ex.STATE#1 | Ex.STATE#1 AWB | Ex.STATE#1 AWP | Drilling | 4501.23 | 816.10 | 4501.23 | 6499.13 | 23.49 | 6499.13 | PASS |
| SEC.05-T02N-R64W | SLOT#07 PIONEER Y17-715 (398'FSL & 2194'FEL,SEC.05) | PIONEER Y17-715 | PIONEER Y17-715 PWB | PIONEER Y17-715 (REV-1.0) PWP | Planned | 12275.84 | 4343.86 | 12275.84 | 13944.39 | 38.17 | 13944.39 | PASS |
| SEC.16-T02N-R64W | SLOT#06 HULLABALOO Y21-756(445'FNL&2617'FWL,SEC.16) | HULLABALOO Y21-756 | HULLABALOO Y-21-756 AWB | HULLABALOO Y-21-756 AWP | Drilling | 3102.43 | 1724.53 | 6930.00 | 7102.05 | 38.72 | 7102.05 | PASS |



Closest Approach Clearance Summary Report

GIG-EM STATE Y9-730 (REV-B.0) PWP - SPE WPTS Stop Drilling HSE Risk (2017)

Page 4 of 4



| REFERENCE WELLPATH IDENTIFICATION | | | |
|-----------------------------------|--|-----------|-------------------------|
| Operator | NOBLE ENERGY, INC | Well | GIG-EM STATE Y9-730 |
| Field | WELD COUNTY (NOBLE NAD 83 GRID) | API/Legal | |
| Facility | SEC.16-T02N-R64W | Wellbore | GIG-EM STATE Y9-730 PWB |
| Slot | SLOT#19 GIG-EM STATE Y9-730 (595'FNL&975'FEL,SEC.16) | | |

| CALCULATION RANGE & CUTOFF | | |
|----------------------------|-------------------|--------------------|
| From: 30.00ft MD | To: 17436.59ft MD | C-C Cutoff: (none) |

| OFFSET WELL CLEARANCE SUMMARY (31 Offset Wellpaths selected) Ratios are calculated in Closest Approach plane | | | | | | | | | | | | |
|--|--|--------------------|------------------------|------------------------|-----------------|------------------------|-------------------------|------------------------|--------------------------|-----------|--------------------------|-------------|
| Offset Facility | Offset Slot | Offset Well | Offset Wellbore | Offset Wellpath | Wellbore Status | C-C Clearance Distance | | | Rule Separation Ratio | | | |
| | | | | | | Ref MD [ft] | Min C-C Clear Dist [ft] | Diverging from MD [ft] | Ref MD of Min Ratio [ft] | Min Ratio | Min Ratio Dvrg from [ft] | Rule Status |
| SEC.16-T02N-R64W | SLOT#05 HULLABALOO Y21-763(445'FNL&2580'FWL,SEC.16) | HULLABALOO Y21-763 | HULLABALOO Y21-763 AWB | HULLABALOO Y21-763 AWP | Drilling | 1444.15 | 1768.64 | 7230.00 | 7679.20 | 46.22 | 7679.20 | PASS |
| SEC.16-T02N-R64W | SLOT#04 HULLABALOO Y21-769(445'FNL&955'FWL,SEC.16) | HULLABALOO Y21-769 | HULLABALOO Y21-769 AWB | HULLABALOO Y21-769 AWP | Drilling | 7068.00 | 2620.76 | 7068.00 | 7480.01 | 56.41 | 7480.01 | PASS |
| SEC.16-T02N-R64W | SLOT#03 HULLABALOO Y21-775(445'FNL&917'FWL,SEC.16) | HULLABALOO Y21-775 | HULLABALOO Y21-775 AWB | HULLABALOO Y21-775 AWP | Drilling | 7108.61 | 3030.15 | 7108.61 | 8166.38 | 64.21 | 8166.38 | PASS |
| SEC.16-T02N-R64W | SLOT#02 HULLABALOO Y21-781(445'FNL&880'FWL,SEC.16) | HULLABALOO Y21-781 | HULLABALOO Y21-781 AWB | HULLABALOO Y21-781 AWP | Drilling | 7213.72 | 3420.29 | 7213.72 | 8861.94 | 71.71 | 8861.94 | PASS |
| SEC.16-T02N-R64W | SLOT#01 HULLABALOO Y21-787(445'FNL&842'FWL,SEC.16) | HULLABALOO Y21-787 | HULLABALOO Y21-787 AWB | HULLABALOO Y21-787 AWP | Drilling | 2817.61 | 3502.28 | 7230.00 | 9290.50 | 77.15 | 9290.50 | PASS |
| SEC.16-T02N-R64W | SLOT#12 Ex.STATE Y #16-5D(1984'FNL&667'FWL,SEC16) (PR) 7725'MD | Ex.STATE Y #16-5D | Ex.STATE Y #16-5D AWB | Ex.STATE Y #16-5D AWP | Drilling | 6458.46 | 3625.36 | 6458.46 | 7095.72 | 96.24 | 7095.72 | PASS |