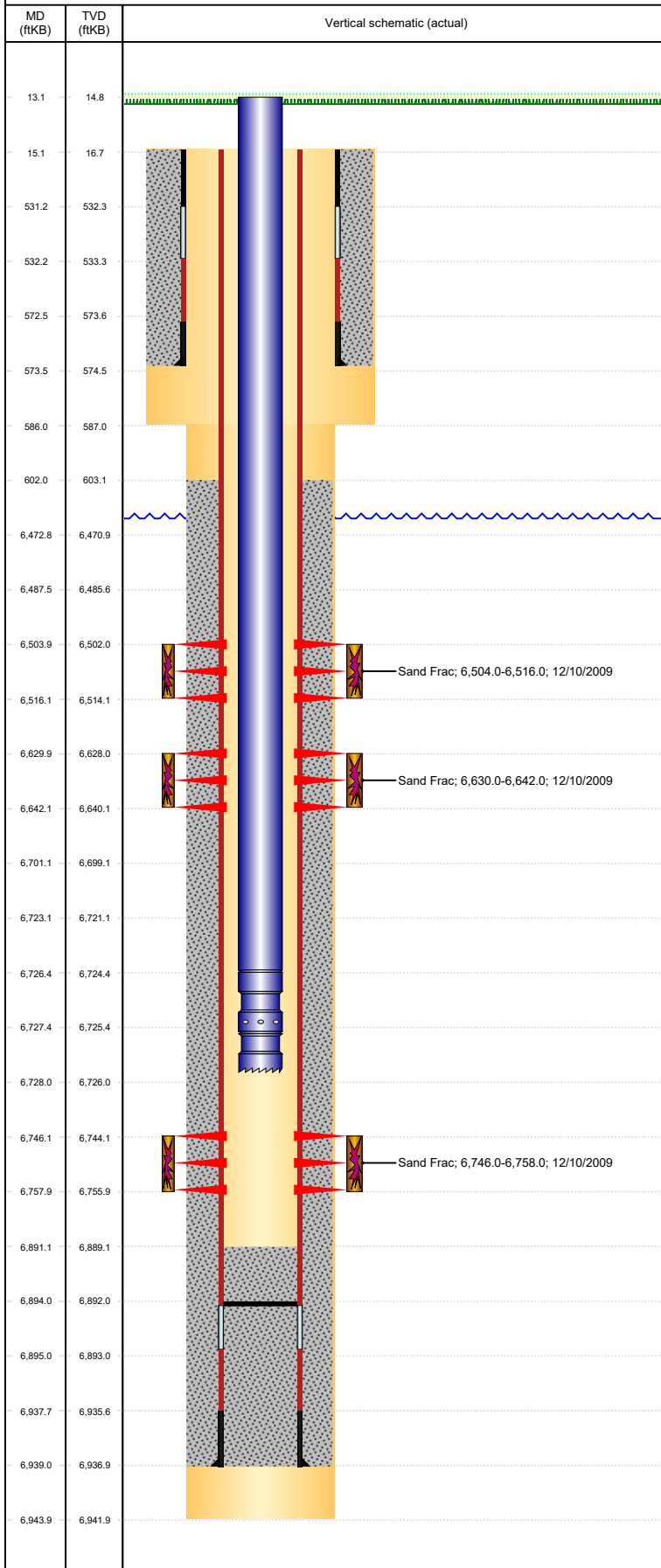


# Wellbore Schematic Input Report-DJ

**Well Name: WILMOTH C14-25**

VERTICAL, ORIGINAL HOLE, 5/5/2022 11:59:52 AM



## Well Header

API 05-123-29730	Business Unit DJ BASIN	District 15	Well Config VERTICAL
Original KB Elevation (ft) 4,663	KB - GL / MSL (ftKB) 15.00	Spud Date 11/1/2009	P & A Date

Comment  
KMG ADDED AS PARTNER AFTER WELL WAS DRILLED - PARTNER REPORTS & LOGS WILL BE SENT 2/8/10 - kpp

Directions To Well  
WCR 44 & WCR 57: GO NORTH 0.25 MI, THEN EAST 0.25 MI, THEN NORTH 100' INTO LOCATION

## Congressional Location

Quarter 3 NE	Quarter 4 SW	Section 14	Township 4	Twntshp N/S Dir N	Range 64	Range E/W Dir W
-----------------	-----------------	---------------	---------------	----------------------	-------------	--------------------

## Bottom Hole Legal Location

Bottom Hole Legal Location

## Plug Back Total Depths

Date	Depth (ftKB)	Method	Com
11/5/2009	6,894.1	CASING TALLY	FLOAT COLLAR

## Wellbore Sections

Section Des	Size (in)	Act Top, MD (ftKB)	Act Btm, MD (ftKB)
SURFACE	12 1/4	15	586
PRODUCTION	7 7/8	586	6,944

## Zone Statuses

Zone Name	Status Date	Status	Fluid Type	Job	Prod Method
NIORARA	12/12/2009	PR		DRILLING/CO...	
CODELL	12/12/2009	PR		DRILLING/CO...	

## Casing Strings

### Surface, 573.4ftKB

Casing Description	Run Date	OD (in)	Wt/Len (l...)	Grade	Top, MD (ft...)	MD (ftKB)
Surface	11/2/2009	8 5/8	24.00	J-55	15.0	573.4

### Production, 6,939.1ftKB

Casing Description	Run Date	OD (in)	Wt/Len (l...)	Grade	Top, MD (ft...)	MD (ftKB)
Production	11/5/2009	4 1/2	11.60	M-80	15.0	6,939.1

## Cement

Description	Top Depth (ftKB)	Bottom Depth (ftKB)
Surface Casing Cement	15.0	573.4
Description	Top Depth (ftKB)	Bottom Depth (ftKB)
Production Casing Cement	602.0	6,939.1

## Tubing Strings

Tubing Description	Run Date	String...	ID (in)	Wt (lb/ft)	Grade	Len (ft)	Set De...
Tubing - Production	2/18/2010	2 3/8	2.00	4.70	J-55	6,714.90	6,725.9

## Tubing Components

Item Des	OD (in)	Wt (lb/ft)	Grade	Jts	Len (ft)	Btm (ftKB)	Btm (TVD) (ftKB)
Tubing	2 3/8	4.70	J-55	217	6,713.25	6,726.3	6,724.3
Seating NipplE	2 3/8	5.40	J-55	1	1.20	6,727.5	6,725.5
Notched collar	2 3/8		J-55	1	0.45	6,727.9	6,725.9

## Other In Hole

Run Date	Des	Make	OD (in)	Top (ftKB)	Btm (ftKB)	Pr op R un g

## Logs

Date	Type	Top, MD (ftKB)	Btm, MD (ftKB)
11/4/2009	Caliper/Comp. Density/Neutron/GR/SP/ML	2,550.0	6,931.0
11/4/2009	DIL/GR/SP/Caliper	573.0	6,951.0
11/18/2009	CBL/CCL/GR	0.0	6,862.0

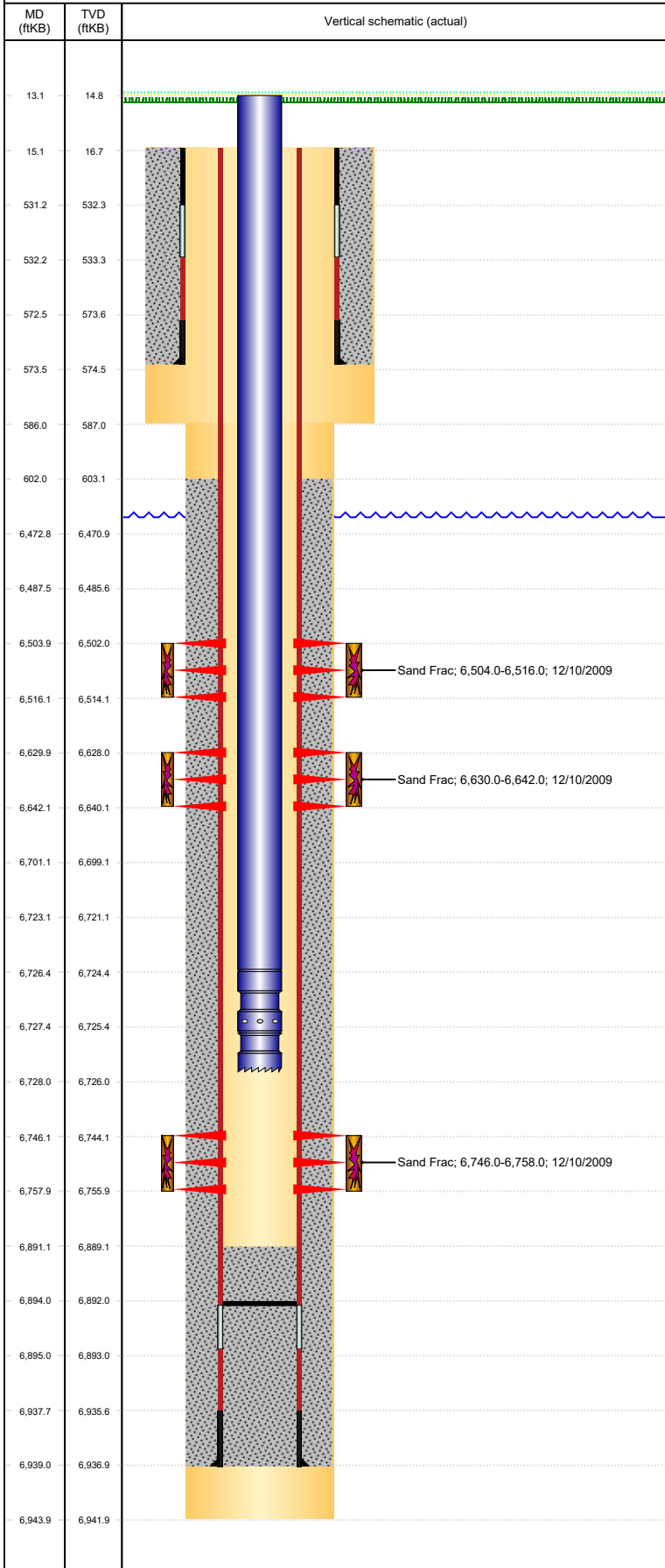
## Perforation Data

Linked Zone	Bnch/St g	Sum of Entered Shot Total	Top (ftKB)	Btm (ftKB)	Date
NIORARA, ORIGINAL HOLE	A	24	6,504.00	6,516.00	12/10/2009
NIORARA, ORIGINAL HOLE	C	24	6,630.00	6,642.00	12/10/2009
CODELL, ORIGINAL HOLE		48	6,746.00	6,758.00	11/23/2009
<b>Total</b>		<b>96</b>			

**Well Name: WILMOTH C14-25**

VERTICAL, ORIGINAL HOLE, 5/5/2022 11:59:52 AM

## Stimulation Intervals



Interval...	Start Date	Primary Job Type	Zone
1	12/10/2009	DRILLING/COMPLETION - ORIGINAL	CODELL, ORIGINAL HOLE
Technical Result Success		Tech Result Details According to Plan	Tech Result Note
Comment (CODELL): HAD ISSUES GETTING STARTED. 0700 RTS AND STARTED AT 1024. BUFFER HOSE FROZE, MOVER WOULDN'T START, QC LOOP FROZE. JUST REALLY COLD AND ALOT OF THE ISSUES THAT COME WITH IT. DROPPED RATE TO RUN ACID CORRECTLY. AVG VISC 28.1 CPS, AVG TEMP 59.1F, AVG PH 10.08.			
Interval...	Start Date	Primary Job Type	Zone
2	12/10/2009	DRILLING/COMPLETION - ORIGINAL	NIOBRARA, ORIGINAL HOLE
Technical Result Success		Tech Result Details According to Plan	Tech Result Note
Comment (NIOBRARA "C"): LOST DENSITY A COUPLE OF TIMES DURING SAND STAGES. DROPPING ALMOST A FULL POUND BEFORE GETTING SAND BACK ON GATE SWAPS AT THE MOUTAIN MOVER. DROPPED RATE TO RUN ACID CORRECTLY. AVG VISC 23.6 CPS, AVG TEMP 58.5F, AVG PH 10.13.			
Interval...	Start Date	Primary Job Type	Zone
3	12/10/2009	DRILLING/COMPLETION - ORIGINAL	NIOBRARA, ORIGINAL HOLE
Technical Result Success		Tech Result Details According to Plan	Tech Result Note
Comment (NIOBRARA "A"): BLENDER BLEW A HYDRAULIC HOSE AT THE END OF THE NIO "C". DID WIRELINE WORK AND WAITED 3 HOURS TO GET HOSE REPLACED, AND TRUCKS THAWED OUT AND RUNNING. ONCE WE GOT GOING JOB WENT WELL. AVG VISC 23.3 CPS, AVG TEMP 54.5F, AVG PH 10.12.			