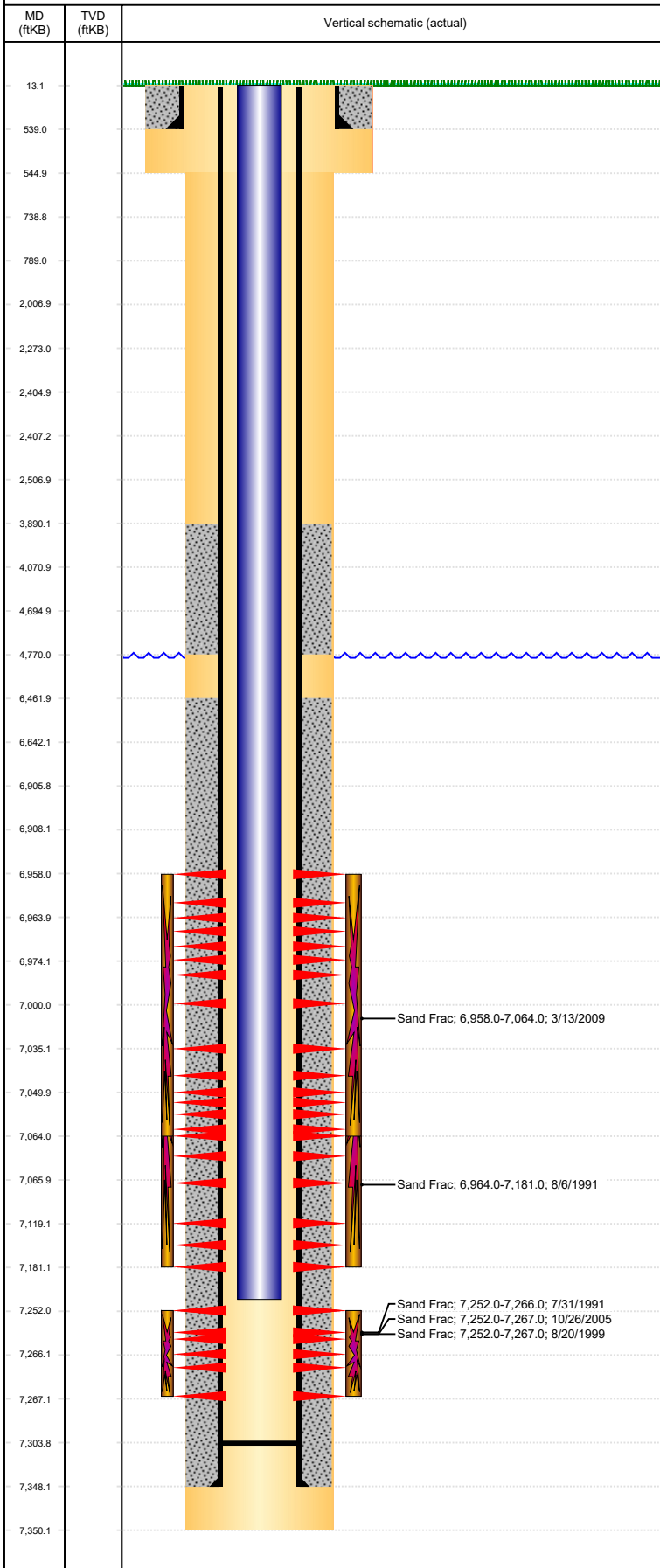


Well Name: UPRC 21-11G

VERTICAL, ORIGINAL HOLE, 4/29/2022 8:55:05 AM



Well Header

API 05-123-15057	Business Unit DJ BASIN	District 15	Well Config VERTICAL
Original KB Elevation (ft) 4,874	KB - GL / MSL (ftKB) 13.00	Spud Date 7/21/1991	P & A Date

Comment

Directions To Well

RD 41 & RD 42, E 3/8, N 1/4 TO BATTERY, N 300' & E INTO.

Congressional Location

Quarter 3 NE	Quarter 4 SW	Section 21	Township 4	Twntshp N/S Dir N	Range 65	Range E/W Dir W
-----------------	-----------------	---------------	---------------	----------------------	-------------	--------------------

Bottom Hole Legal Location

Bottom Hole Legal Location

Plug Back Total Depths

Date	Depth (ftKB)	Method	Com
7/27/1991	7,300.0		PBTD REPORTED ON STATE CMPLTN RPT
11/3/2005	7,302.0	TAG	C/O LAND TBG
3/30/2009	7,303.7	TAG	

Wellbore Sections

Section Des	Size (in)	Act Top, MD (ftKB)	Act Btm, MD (ftKB)
SURFACE	12 1/4	13	545
PRODUCTION	7 7/8	545	7,350

Zone Statuses

Zone Name	Status Date	Status	Fluid Type	Job	Prod Method
NIOBRARA	8/9/1991	PR	Water	DRILLING/CO...	Flowing
NIOBRARA	3/14/2009	PR		RE-FRAC, 2/25...	
NIOBRARA	4/1/2009	PR		RE-FRAC, 2/25...	
NIOBRARA	2/5/2010	PR			
CODELL	8/9/1991	PR	Water	DRILLING/CO...	Flowing
CODELL	8/22/1999	PR		RE-FRAC, 8/17...	
CODELL	12/8/2005	PR		TRI-FRAC, 10/...	
CODELL	2/25/2009	SI		RE-FRAC, 2/25...	
CODELL	4/1/2009	PR		RE-FRAC, 2/25...	
CODELL	2/5/2010	PR			
CODELL	10/27/2016	PR			
CODELL	11/29/2016	SI			

Casing Strings

Surface Casing, 539.0ftKB

Casing Description	Run Date	OD (in)	Wt/Len (l...)	Grade	Top, MD (ft...)	MD (ftKB)
Surface Casing	7/21/1991	8 5/8	23.00		13.0	539.0

Production, 7,348.0ftKB

Casing Description	Run Date	OD (in)	Wt/Len (l...)	Grade	Top, MD (ft...)	MD (ftKB)
Production	7/21/1991	4 1/2	11.60	M-75	13.0	7,348.0

Cement

Description	Top Depth (ftKB)	Bottom Depth (ftKB)
SURFACE CASING CEMENT	13.0	539.0
PRODUCTION CASING CEMENT	3,890.0	4,770.0
PRODUCTION CASING CEMENT	6,462.0	7,348.0

Tubing Strings

Tubing Description	Run Date	String...	ID (in)	Wt (lb/ft)	Grade	Len (ft)	Set De...
Tubing - Production	11/3/2005	2 3/8	2.00	4.70	J-55	7,226.00	

Tubing Components

Item Des	OD (in)	Wt (lb/ft)	Grade	Jts	Len (ft)	Btm (ftKB)	Btm (TVD) (ftKB)
Tubing	2 3/8	4.70	J-55	222	7,226.00	7,239.0	
Tubing Description	Run Date	String...	ID (in)	Wt (lb/ft)	Grade	Len (ft)	Set De...
Tubing - Production	3/30/2009	2 3/8	2.00	4.70	J-55	7,222.10	

Tubing Components

Item Des	OD (in)	Wt (lb/ft)	Grade	Jts	Len (ft)	Btm (ftKB)	Btm (TVD) (ftKB)
Tubing	2 3/8	4.70	J-55	233	7,221.00	7,232.0	
Notched Seating Nipple	2 3/8			1	1.10	7,233.1	