



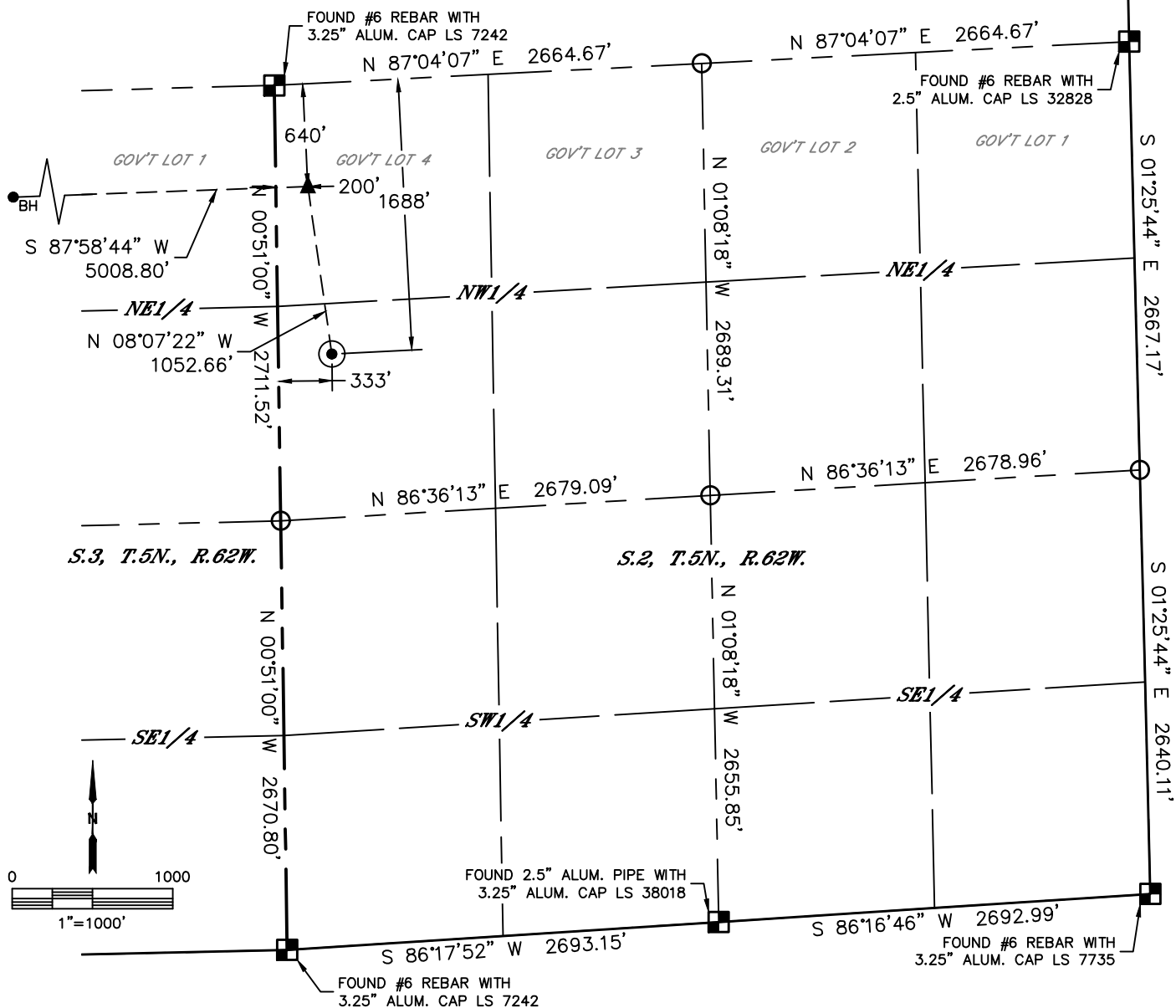
Lat40°, Inc. 6250 W. 10th Street, Unit 2, Greeley, CO 970-515-5294

WELL LOCATION CERTIFICATE

STATE ANTELOPE 41-11-3HN

BONANZA CREEK ENERGY

SECTION: 2
TOWNSHIP: 5N
RANGE: 62W
6TH. P.M.
WELD COUNTY, CO



CLIENT: BONANZA CREEK ENERGY						LANDMAN: JOE SCHULTZ			
INSTRUMENT OPERATOR: SCOTT SHERARD						SURVEY DATE: 5/24/2021		SURFACE USE: RANGELAND	
SHL FOOTAGE				SHL LAT °	SHL LONG °	SHL PDOP	SHL ELEV (FT.)	SHL 1/4/1/4	SHL S-T-R
1688	FNL	333	FWL	40.43213	-104.29884	1.6	4645	SWNW	2-5-62

BHL FOOTAGE				BHL LAT °	BHL LONG °	BHL S-T-R	EP LAT °	EP LONG °	EP S-T-R
677	FNL	470	FWL	40.43469	-104.31731	3-5-62	40.43499	-104.29932	2-5-62

LEGEND

- = ALIQUOT MONUMENT AS DESCRIBED
- = CALCULATED POSITION
- = SURFACE HOLE LOCATION (SHL)
- ▲ = ENTRY POINT LOCATION (EP)
- ◆ = TOP OF PRODUCTIVE ZONE (PZONE)
- _{BH} = BOTTOM HOLE LOCATION (BHL)
- ⊕ = EXISTING WELL
- ⊖ = ABANDONED WELL

NOTE:

- 1) Bearings shown are Grid Bearings of the Colorado State Plane Coordinate System, North Zone, North American Datum 1983. The lineal dimensions as contained herein are based upon the "U.S. Survey Foot."
- 2) Distances to section lines measured at 90 degrees from said section lines.
- 3) Ground elevations are based on an observed GPS elevation (NAVD 1988 DATUM).
- 4) Latitude and Longitude shown are (NAD 83 DATUM).
- 5) IMPROVEMENTS: See LOCATION DRAWING for all visible improvements within 500' of oil and gas location.
- 6) This map does not represent a boundary survey.



SHEET 1 OF 2

Brian S. Rottinghaus—On behalf of Lat40°, Inc.
Colorado Licensed Professional Land Surveyor No. 38571
DATE: 7/9/2021
PROJECT#: 2021205

Brian S. Rottinghaus—On behalf of Lat40^o, Inc.
Colorado Licensed Professional Land Surveyor No. 38571
DATE: 7/9/2021
PROJECT#: 2021205