

Red Mesa Bond Claim: Task 2 - Plug and Abandon - 326319 067-07829  
Suzanne Jumbo #1

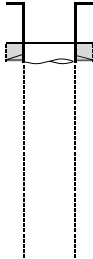
Prepared 4/13/2022 **Notes:**  
Spud 08/07/1991

FIELD NAME Red Mesa  
FIELD NUMBER 72890

LOCATION

Basin San Juan Mineral Owner: Fee  
Location-Townships 33N Surface Owner: Fee  
Location-Ranges 12W  
Elevation 6,442'

Depth	Formation/Member	Existing Casing and Cement Coverage
0'	Estimated Fort Lewis 0'	85' Surface Casing, 5-1/2", 15 ppf cemented w/ 18 sx in 7" hole
	Estimated Mesa Verde 240'	Possible 2-7/8" tubing set @ 1,026' Rods, pump, packer set @ 1,026'
500'	Estimated Cliff House 446' Estimated Point Lookout 559'	Open hole completion Mesaverde - 1,026'
1,000'	Estimated Mesaverde 1026'	1,062' Open Hole, 7"  1,062' TMD / 1,062' TVD PBDT 1,062'



Space	Hole/Csg	Csg	cf/f	bbls/ft
Annulus above shoe				
Annulus below shoe				
Open Hole	7		0.2673	0.0476
Plug #	sx	bbls		
1		50	9.5	
2		100	19.0	
3		35	7.1	
Total		185	36	

\*BOP or other mechanical method should be used for well control

Depth	Proposed Plug Placement
0'	Fill cement to surface in all annuli w/additional sx as needed Cut, cap, and bury per COGCC rules/regulations/guidelines
	Plug 3 Pump 35 sx @ 150' to surface
500'	Plug 2 Pump 100 sx w/accelerant @ 569' WOC & tag
	Run CBL/Caliper Log/CCL (Hole must be full of still water)
1,000'	Circulate well clean
	Plug 1 Pump 50 sx w/accelerant @ 1,062' WOC & tag
	RIH w/gauge ring & tag existing PBDT Remove rods, tubing, tubing anchor/packer/BHA Remove any obstructions in the well to reach PBDT Kill the well - Do not assume well is dead

