

OWN Resources Operating LLC, McCall 42-09
125-12103

Inspection #688312553

4/18/2022

Routine Field Inspection

OWN RESOURCES OPERATING

McCALL 33-09 1N46W

OWN RESOURCES OPERATING

McCALL 42-09 1N46W

API #05-125-12104-00
YUMA COUNTY, CO
PH: 970-332-3585 OR 911

#05-125-12103-00
YUMA COUNTY, CO
970-332-3585 OR 911

McCALL 43-09 1N46W
NE SE/4 SEC.9-T1N-R46W
API #05-125-12106-00
YUMA COUNTY, CO

McCALL 23-09 1N46W
SW/4 SEC.9-T1N-R46W
API #05-125-11810-00
YUMA COUNTY, CO

PH: 970-332-3585 OR 911

970-332-3585 OR 911

Colorado Oil and Gas Conservation Commission

40.06837, -102.52319, 3910.8ft, 170°

04/18/2022 02:49:50 PM

OWN RESOURCES OPERATING

McCALL 42-09 1N46W

SE NE/4 SEC.9-T1N-R46W

API #05-125-12103-00

YUMA COUNTY, CO

PH: 970-332-3585 OR 911

Colorado Oil and Gas Conservation Commission

40.06976, -102.51224, 3868.1ft, 347°

04/18/2022 03:07:24 PM

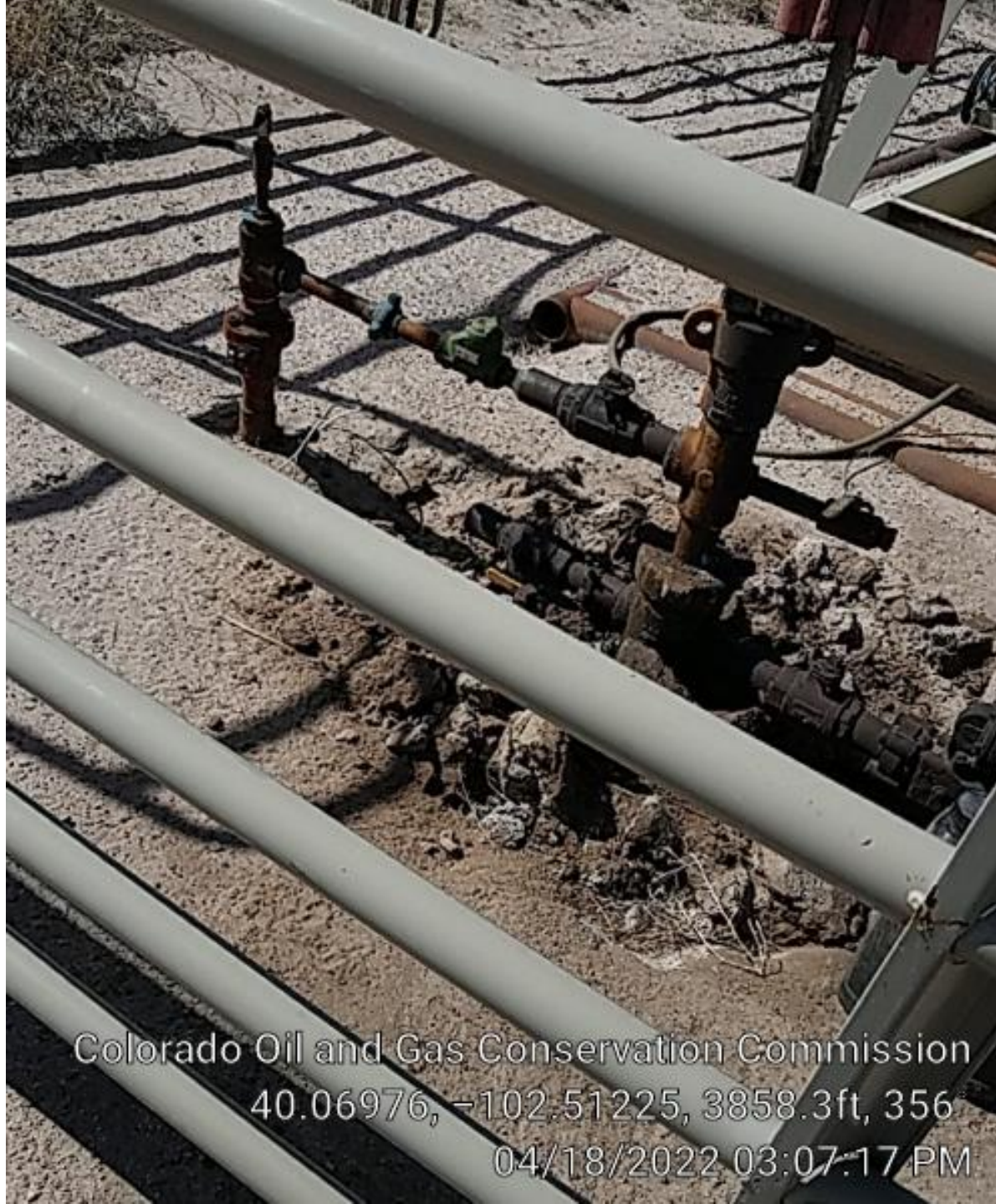


OWN RESOURCES OPERATING
McCALL 42-09 IN46W
SE NE/4 SEC.9-T1N-R46W
API #05-125-12103-00
YUMA COUNTY, CO
PH 970-332-3585 OR 911

Colorado Oil and Gas Conservation Commission
40.06972, -102.51223, 3874.7ft, 355°
04/18/2022 03:07:45 PM



Colorado Oil and Gas Conservation Commission
40.06975, -102.51223, 3868.1ft, 350°
04/18/2022 03:07:31 PM



Colorado Oil and Gas Conservation Commission
40.06976, -102.51225, 3858.3ft, 356
04/18/2022 03:07:17 PM




Colorado Oil and Gas Conservation Commission

40.06973, -102.51223, 3868.1ft, 309°

04/18/2022 03:07:52 PM

RESOURCES OPERATING
L 42-09 1N46W
4 SEC.9-T1N-R46W
05-125-12103-00
A COUNTY, CO
0-332-3585 OR 911

Colorado Oil and Gas Conservation Commission
40.06973, -102.51223, 3871.4ft, 25°
04/18/2022 03:07:59 PM



Colorado Oil and Gas Conservation Commission
40.06973, -102.51223, 3871.4ft, 95°
04/18/2022 03:08:06 PM



Colorado Oil and Gas Conservation Commission

40.06973, -102.51223, 3871.4ft, 184°

04/18/2022 03:08:12 PM

OWN RESOURCES OPERATING

McCALL 42-09 1N46W

McCALL 43-09 1N46W

YUMA COUNTY, CO

PH: 970-332-3585 OR 911

Colorado Oil and Gas Conservation Commission

40.06746, -102.51212, 3868.1ft, 78°

04/18/2022 03:03:33 PM



Colorado Oil and Gas Conservation Commission
40.06745, -102.51211, 3878.0ft, 63°
04/18/2022 03:03:41 PM



Colorado Oil and Gas Conservation Commission
40.06741, -102.51203, 3887.8ft, 292°
04/18/2022 03:04:11 PM

Well Operator:	<u>Own Resources Operating</u>	API	<u>05175121030000</u>
Lease Name:	<u>MCCALL 42-09</u>	Fed. CA. No (if applicable)	
Fed. Lease No (if applicable)		Meter	<u>4076</u>
Meter Run Size:	<u>2.067</u>	WP Code	<u>MCCA209</u>
Route	<u>MM</u>	Meter Tech Signature & Comm	

Route	MM	Check Plate	Meter Tech Signature & Comments
Last Calibration Date	Orifice Plate Size		
12/2020	.375	✓	Change Plate From 375 to 250
4-9-20	.250	✓	calibrate
3-15-21	.250	ix	Change Plate From .250 to .325
5/25/21	.325	✓	Cal
3-28-21	.325		

Colorado Oil and Gas Conservation Commission
40.06741, -102.51203, 3887.8ft, 274°
04/18/2022 03:04:25 PM

Well Operator: _____ Own Resources Operating: _____
Lease Name: MCCALL 43-09 API 05125121060000
Fed_Lease_No Fed_CA_No
(if applicable) _____ (if applicable) _____
Meter _____ 4077
Meter Run Size: _____ 2.067
Route SCHRAMM WP Code MCC4309

Last Calibration Date	Orifice Plate Size	Check Plate	Meter Tech Signature & Comm
3/12/2020			
3-15-21	.375	✓	Calibrate
4-5-21	.250	✓	Remove .375 in .250 Plat
3-28-22	.250	✓	Cal

Colorado Oil and Gas Conservation Commission
40.06741, -102.51203, 3887.8ft, 269°
04/18/2022 03:04:49 PM

Colorado Oil and Gas Conservation Commission
40.06741, -102.51203, 3887.8ft, 269°
04/18/2022 03:04:49 PM