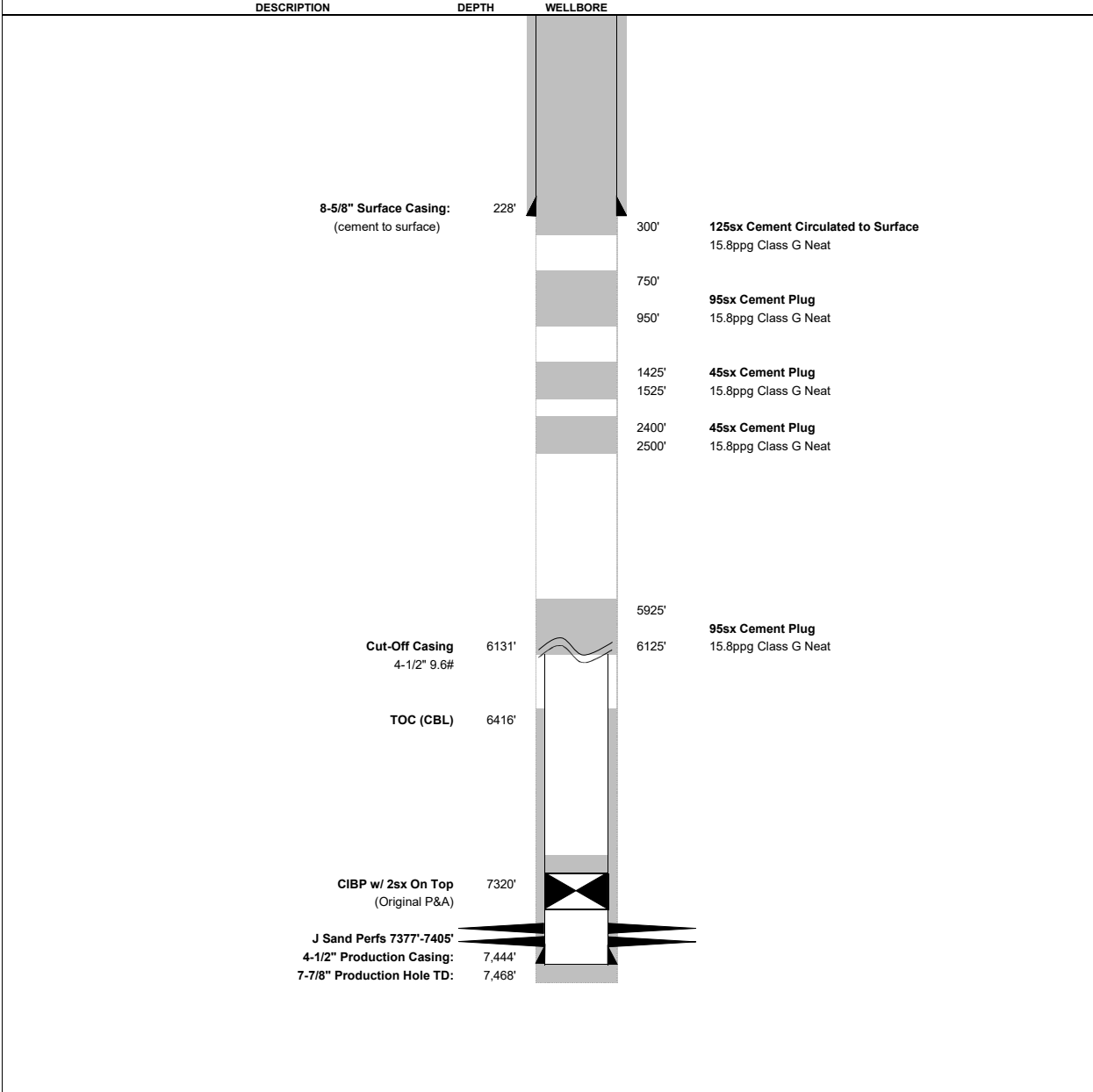


State C 41-36 Proposed WBD



WELL:	State C 41-36			
LOCATION:	NENE	36	2N	64W
	990FNL	990FEL	(Planned)	
	40.099329°N, -104.493490°E			
FORMATION:	JSND	8/28/1982		
API #:	05-123-10541			
Field:	WATTENBERG			
CURRENT STATUS:	12/29/1995 PA			
Spud:	1/11/1982			

Casing and Tubular Data					
Type	Size	Weight	Top	Bottom	Hole Size
Surface	8 5/8"	24.0 ppf	0	228'	12-1/4"
Open Hole			228'	6131'	7-7/8"
Production Casing	4 1/2"	10.5 ppf	6131'	7,444'	7-7/8"

Elevation Data		
GL	4872	feet
KB	4880	feet
Difference	8	feet

Formation	Depth	
Base of Fox Hills	835'	MD
Base of Upper Pierre	1472'	MD
Niobrara	6598'	MD
D Sand	7311'	MD
J Sand	7372'	MD