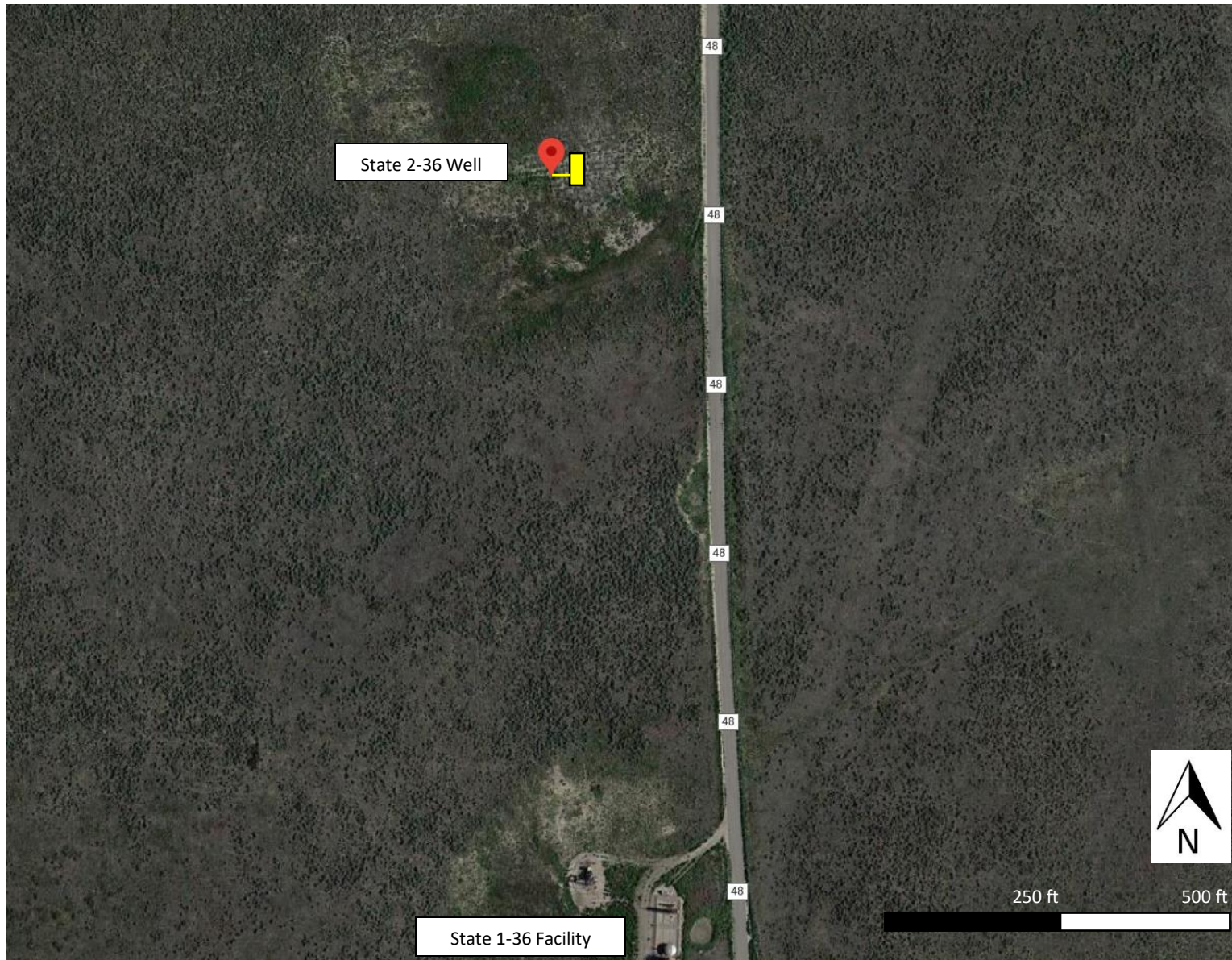



Surface Facility Diagram

State of Colorado 2-36 | 05-009-06674 | 37.03913/-102.218335



 Proposed Surface Pump*

**Not to exceed surface
injection pressure of 775 psi*

*Note: Phoenix Resources
will first utilize water truck
to transport produced
water from the State 1-36
to this well. Injection lines
will be run in the future
once economics improve*